

# Review of Divisional Boundaries

---

**2019 PROPOSED DETERMINATION**  
GYMPIE REGIONAL COUNCIL

## Contents

INTRODUCTION .....	3
Endorsement of proposal .....	3
THE REVIEW PROCESS .....	4
Determining the quota .....	4
EXISTING BOUNDARIES & ENROLMENT .....	5
Table 1 – Current and Projected Council Quota .....	5
Table 2 – Current and Projected Enrolment for the Existing Electoral Divisions .....	5
PUBLIC SUGGESTIONS .....	6
THE PROPOSED BOUNDARIES .....	7
Table 3 – Current and Projected Enrolment for the Proposed Electoral Divisions .....	7
Division 1 .....	7
Division 2 .....	8
Division 3 .....	8
Division 4 .....	8
Division 5 .....	9
Division 6 .....	9
Division 7 .....	9
Division 8 .....	10
COMMENTS ON THE PROPOSAL INVITED .....	10
FINALISING THE REVIEW .....	10
IMPLEMENTATION .....	11

<b>APPENDIX A</b>	Minister’s Referral
<b>APPENDIX B</b>	Public Suggestions
<b>APPENDIX C</b>	Maps

## INTRODUCTION

The *Local Government Act 2009 (Qld)* (the Act) provides for a Local Government Change Commission (Change Commission). The Change Commission is responsible for periodically reviewing the internal boundaries of divided councils so that each division has relatively the same number of enrolled voters. This upholds the key democratic principle of 'one vote, one value', by ensuring each person's vote carries the same weight.

On 15 February 2019, the Minister for Local Government, Minister for Racing and Minister for Multicultural Affairs, The Honourable Stirling Hinchliffe MP referred a divisional boundary review of the Gympie Regional Council (see Appendix A).

The Change Commission for this review consists of:

- Mr Pat Vidgen, Electoral Commissioner;
- Mr Wade Lewis, Casual Commissioner; and
- Mr Peter McGraw, Casual Commissioner.

The casual commissioners were appointed by the Governor in Council on 1 November 2018.

## Endorsement of proposal


This report outlines the Change Commission's proposed boundaries for the electoral divisions of the Gympie Regional Council.



**Pat Vidgen PSM**  
**Electoral Commissioner**



**Wade Lewis**  
**Casual Commissioner**



**Peter McGraw**  
**Casual Commissioner**

## THE REVIEW PROCESS

The Change Commission must ensure each division of the Council has a reasonable proportion of enrolled voters, herein referred to as 'quota'. Where possible, community interests, public submissions and easy-to-identify boundaries are also considered.

Assessments are conducted in any way the Change Commission deems appropriate, unless the Minister has provided specific directions.

The process for the divisional boundary review of Gympie is as follows:

1. Invite suggestions
2. Publish the Change Commission's proposal
3. Invite comments on the proposal
4. Publish the Change Commission's final determination report
5. Final determination report provided to the Minister for Local Government, for implementation by the Governor in Council
6. New boundaries come into effect at the 2020 Local Government Quadrennial Election

### Determining the quota

A quota is determined by dividing the total number of enrolled voters by the number of councillors (other than the mayor), plus or minus 10%. The Change Commission also considers projected enrolment, so the divisions remain in quota for as long as possible.

Current enrolment data has been sourced from Queensland's electoral roll and projected enrolment data from the Queensland Government Statistician's Office of Queensland Treasury. Projections are based on the timing of future local government quadrennial elections.

Enrolment information is organised around 'Statistical Areas Level 1 (SA1)'. SA1s are geographical units used by the Australian Bureau of Statistics (ABS) for the release of census data. According to the ABS most SA1s have a population of between 200 to 800 persons with an average population of approximately 400 people.

Current and projected enrolment data are available for download on the Gympie local government review webpage on the Electoral Commission of Queensland's (ECQ) website.

## EXISTING BOUNDARIES & ENROLMENT

The Gympie Regional Council has 36,736 voters and is divided into eight single-member electoral divisions plus a mayor. Table 1 shows the Council's current enrolment quota as at 31 January 2019 and the quota projected for 31 March 2024.

Table 2 shows the current and projected enrolment for the Council's existing divisional boundaries. As at 31 January 2019, Division 4 was out of quota and Division 7 was close to exceeding the quota, and in 2024, Divisions 3, 4 and 7 are projected to be out of quota.

<b>Table 1 – Current and Projected Council Quota</b>		
	<b>31 January 2019</b>	<b>31 March 2024</b>
<b>Number of divisions</b>	8	8
<b>Enrolment</b>	36,736	38,783
<b>Quota per division</b>	4,592	4,848
<b>Quota (+10%) per division</b>	5,051	5,333
<b>Quota (-10%) per division</b>	4,133	4,363

<b>Table 2 – Current and Projected Enrolment for the Existing Electoral Divisions</b>				
<b>Division</b>	<b>Enrolment as at 31/01/2019</b>	<b>(%) Deviation from Quota</b>	<b>Projected Enrolment as at 31/03/2024</b>	<b>(%) Deviation from Quota</b>
Division 1	4,969	8.21	5,313	<b>9.59</b>
Division 2	4,471*	-2.64	4,758	-1.85
Division 3	4,960*	8.01	5,405	<b>11.49</b>
Division 4	4,014	<b>-12.59</b>	4,107	<b>-15.28</b>
Division 5	4,442	-3.27	4,623	-4.64
Division 6	4,395	-4.29	4,544	-6.27
Division 7	5,045	<b>9.86</b>	5,443	<b>12.28</b>
Division 8	4,440	-3.31	4,590	-5.32
* Note: An anomaly was identified during the modelling process, and three voters have been reassigned from Division 2 to Division 3. This table displays the corrected data and the documentation on the ECQ website has been updated.				

## PUBLIC SUGGESTIONS

The Change Commission sought public suggestions to assist in developing its proposal. Advertisements were placed in The Courier-Mail, a local newspaper and on the ECQ's social media platforms.

Suggestions were invited from 27 April 2019 to 5pm 13 May 2019. Three submissions were received and are available to view at Appendix B.

One submission requested adjustments to a number of boundaries including:

- transferring some of the Southside suburb nearest Kidd Bridge from Division 7 to Division 4;
- transferring the areas west of the Mary River (The Palms, Glastonbury and Widgee Crossing South) from Division 3 into Division 6;
- including the western portion of Division 1 in Division 2; and
- moving the areas of Kybong, Tandur and Traverston from Division 8 to Division 5.

The Change Commission adopted most of this suggestion, however chose not to have the boundary between Division 4 and 7 cross the Mary River, as this would have divided the suburb of Southside. Regarding the second point, the Change Commission transferred both The Palms and Glastonbury localities to Division 6, but instead transferred its portion of Widgee Crossing South so that it was able to be united in Division 7.

It was also noted that if growth in Division 1 continues as projected, the third point to expand Division 2 east to take in parts of Division 1 may need to be taken further for future reviews.

The other submissions were out of the scope of this divisional boundary review and were unable to be considered by the Change Commission. The submitters requested:

- the Gympie Regional Council become undivided; and
- the Council become smaller by adding an additional council near the Kilkivan and Goomeri areas.

## THE PROPOSED BOUNDARIES

The proposed boundaries for the Gympie Regional Council are detailed below. They bring enrolment in each division into quota and the Change Commission has made a concerted effort to unite suburbs so that they are wholly contained within individual divisions.

Table 3 shows the current and projected enrolment for the proposed electoral divisions. Maps of the proposed divisions are in Appendix C and interactive maps are on the ECQ website.

<b>Division</b>	<b>Enrolment as at 31/01/2019</b>	<b>(%) Deviation from Quota</b>	<b>Projected Enrolment as at 31/03/2024</b>	<b>(%) Deviation from Quota</b>
Division 1	4,905	6.82	5,247	8.23
Division 2	4,462	-2.83	4,745	-2.12
Division 3	4,356	-5.14	4,740	-2.23
Division 4	4,610	0.39	4,735	-2.33
Division 5	4,514	-1.7	4,695	-3.15
Division 6	4,669	1.68	4,881	0.68
Division 7	4,540	-1.13	4,884	0.75
Division 8	4,680	1.92	4,856	0.17

### Division 1

Division 1 is close to the upper limits of the quota and contains areas with strong projected growth. The Change Commission deliberated how to bring enrolment into quota and contracted the western boundary to follow the Cooloola and Cooloola Cove localities, Bayside Road, Tin Can Bay Road, then from Riflefish Road the boundary heads to Schnapper Creek and continues northwards.

The proposed boundaries leave enrolment higher than typically preferred. However, to reduce enrolment any further would have required substantial reconfiguration of the boundaries and given the unique seaside relationships in this area, the Change Commission decided against such a course of action at this time.

It is important to note that if growth in the Rainbow Beach, Cooloola Cove, Tin Can Bay and surrounding areas continues as projected, and the Council and community wish to retain divisions, it is highly likely these communities will have to be split between divisions in the future. Therefore, the Change Commission recommends the community consider how the divisional boundaries will be able to best accommodate the legislated enrolment requirements of the Act and community interests in the future.

The Change Commission proposes the following changes. The Division:

- a. Transfers the Wallu locality and part of Toolara Forest and Tin Can Bay to Division 2.

The proposed Division has 4,905 voters which is 6.82% above quota and is predicted to have 5,247 voters by 2024 which would be 8.23% above quota.

## **Division 2**

The boundaries of Division 2 have been adjusted to unite suburbs within individual divisions.

The Change Commission proposes the following changes. The Division:

- a. Gains the balance of the Wallu locality and parts of the Tin Can Bay and Toolara Forest suburbs from Division 1;
- b. Gains the remainder of the Canina and Toolara Forest localities and most of the Victory Heights suburb from Division 5; and
- c. Transfers the balance of the Banks Pocket and Araluen localities and its portion of the suburb of Gympie to Division 3.

The proposed Division has 4,462 voters which is -2.83% below quota and is predicted to have 4,745 voters by 2024 which would be -2.12% below quota.

## **Division 3**

A number of changes are proposed to reduce the high levels of enrolment that is projected to push this Division out of quota by 2024.

The Change Commission proposes the following changes. The Division:

- a. Gains the balance of the Banks Pocket and Araluen localities and a portion of the suburb of Gympie from Division 2;
- b. Gains the Bells Bridge suburb from Division 6;
- c. Transfers the entirety of The Palms and Glastonbury suburbs to Division 6; and
- d. Transfers its portion of Widgee Crossing South, so that it is united in Division 7.

The proposed Division has 4,356 voters which is -5.14% below quota and is predicted to have 4,740 voters by 2024 which would be -2.23% below quota.

## **Division 4**

Division 4 has expanded in the north-east and contracted in the south-east, with the proposed boundary following Old Maryborough Road, Bath Terrace, Barton Road, Spring Road, the Gympie locality boundary, Griffin Road, Lillis Road, Cootharaba Road, Station Road, Crescent Road, Red Hill Road, Mount Pleasant Road, Hilton Road, Perseverance Street, Centro Way, before reconnecting with the Bruce Highway/River Road and the Mary River.

The Change Commission proposes the following changes. The Division:

- a. Gains a portion of the Gympie and Victory Heights suburbs from Division 5; and
- b. Transfers a portion of the Gympie suburb to Division 5.

The proposed Division has 4,610 voters which is 0.39% above quota and is predicted to have 4,735 voters by 2024 which would be -2.33% below quota.



**Division 5**

Changes have been made to unite suburbs within this Division by following locality boundaries.

The Change Commission proposes the following changes. The Division:

- a. Gains the Woondum, Kybong, Coles Creek, Traveston and the balance of the Tandur and Mothar Mountain suburbs from Division 8;
- b. Gains part of the Gympie suburb from Division 4;
- c. Transfers a portion of the Gympie and Victory Heights suburb to Division 4; and
- d. Transfers its remaining portion of Victory Heights suburb and the balance of the Canina and Toolara Forest localities to Division 2.

The proposed Division has 4,514 voters which is -1.7% below quota and is predicted to have 4,695 voters by 2024 which would be -3.15% below quota.

**Division 6**

Division 6 has been reconfigured to follow suburb boundaries and to increase enrolment in the Division.

The Change Commission proposes the following changes. The Division:

- a. Gains The Palms and Glastonbury suburbs from Division 3;
- b. Gains the remainder of the Pie Creek locality from Division 7;
- c. Transfers the Bells Bridge locality to Division 3;
- d. Transfers the balance of the Nahrunda suburb and its portion of the Widgee Crossing South locality to Division 7; and
- e. Transfers the balance of the Amamoor Creek, Langshaw, Macintosh Creek, Jones Hill, Long Flat, Calico Creek and Mooloo suburbs to Division 8.

The proposed Division has 4,669 voters which is 1.68% above quota and is predicted to have 4,881 voters by 2024 which would be 0.68% above quota.

**Division 7**

A number of changes are proposed to reduce the high levels of enrolment that is projected to push this Division out of quota by 2024.

The Change Commission proposes the following changes. The Division:

- a. Gains the balance of the Nahrunda suburb and its portion of the Widgee Crossing South locality from Division 6;
- b. Gains the remaining portion of Widgee Crossing South from Division 3;
- c. Transfers the remainder of the Pie Creek locality to Division 6; and
- d. Transfers the balance of the Jones Hill suburb to Division 8.

The proposed Division has 4,540 voters which is -1.13% below quota and is predicted to have 4,884 voters by 2024 which would be 0.75% above quota.

## Division 8

Division 8 has been modified to increase its enrolment and unite suburbs by following locality boundaries.

The Change Commission proposes the following changes. The Division:

- a. Gains the balance of the Amamoor Creek, Langshaw, Macintosh Creek, Long Flat, Calico Creek and Mooloo suburbs from Division 6;
- b. Gains the balance of the Jones Hill locality from Divisions 6 and 7; and
- c. Transfers the Woondum, Kybong, Coles Creek, Traveston, Tandur and Mothar Mountain suburbs to Division 5.

The proposed Division has 4,680 voters which is 1.92% above quota and is predicted to have 4,856 voters by 2024 which would be 0.17% above quota.

## COMMENTS ON THE PROPOSAL INVITED

Comments on this proposal are invited until 5pm, 12 August 2019 and can be lodged through:

### Online Form

<https://ecq.qld.gov.au/lgr/gympie>

### Email

[LGCCsubmissions@ecq.qld.gov.au](mailto:LGCCsubmissions@ecq.qld.gov.au)

### Personal Delivery

Electoral Commission of Queensland  
Level 20, 1 Eagle Street  
BRISBANE QLD 4000

### Post

Local Government Change Commission  
GPO Box 1393  
BRISBANE QLD 4001

It is recommended that those submitting comments:

- consider the enrolment requirements outlined in the Act and in this report;
- clearly state which division/s your comment relates to;
- provide supporting information for why you support or oppose a proposed boundary change or public submission; and
- if you oppose a change, provide alternative boundary suggestions and reasoning.

## FINALISING THE REVIEW

After reviewing the public comments on the proposal, the Change Commission will make a final determination on the Council's divisional boundaries.

The results of a Change Commission review must be provided to the Minister for Local Government. A notice of results is published in a local newspaper, the Queensland Government Gazette and on the ECQ website.

A decision of the Change Commission is not subject to appeal.

## **IMPLEMENTATION**

A local government change can only be implemented by the Governor in Council under a regulation.

The regulation may provide for anything that is necessary or convenient to facilitate the change.

# **APPENDIX A**

## **Minister's Referral**



Minister for Local Government,  
Minister for Racing and  
Minister for Multicultural Affairs

Our ref: MC18/8047

15 FEB 2019

Mr Pat Vidgen PSM  
Electoral Commissioner  
Electoral Commission Queensland  
GPO Box 1393  
BRISBANE QLD 4001

1 William Street  
Brisbane Queensland 4000  
PO Box 15009  
City East Queensland 4002  
Telephone +61 7 3719 7560  
Email [lgrma@ministerial.qld.gov.au](mailto:lgrma@ministerial.qld.gov.au)  
Website [www.dlgrma.qld.gov.au](http://www.dlgrma.qld.gov.au)

ABN 65 959 415 158

Dear Pat

I am writing to you in relation to a Local Government electoral review that was undertaken by the Gympie Regional Council in preparation for the 2020 Local Government quadrennial elections.

I have received correspondence from Mr Dimitri Scordalides, Acting Chief Executive Officer of the Council, dated 12 December 2018, advising of the results of the review. The review concluded that the projected number of electors in 2020 would be out of the quota of a reasonable number of electors as required by the *Local Government Act 2009* (the Act) in at least one out of the Council's eight divisions (Division 4), with the possibility of another division (Division 7) being out of quota.

Section 18 of the Act provides that only I may apply to the Local Government Change Commission (Change Commission) for an assessment of a proposed Local Government change. Further, under section 19 of the Act, the Change Commission must consider whether the Local Government change is consistent with the Act and must consider my views on any proposed changes.

I consider it appropriate to refer the matter to you for independent assessment and determination by the Change Commission. I have no directions on how the Change Commission conducts its assessment. A copy of the Council's review is enclosed.

I have asked for Mr Daniel Westall, Manager, Governance, Local Government Division in the Department of Local Government, Racing and Multicultural Affairs to assist you with any further queries. You may wish to contact Mr Westall on [REDACTED] or by email at [REDACTED].

Yours sincerely

STIRLING HINCHLIFFE MP  
Minister for Local Government,  
Minister for Racing and  
Minister for Multicultural Affairs

Enc



12 December 2018

Stirling Hinchliffe MP  
Minister for Local Government, Racing  
and Multicultural Affairs  
PO Box 15009  
CITY EAST QLD 4002

Sent via email: [REDACTED]

Dear Minister,

Re:- Review of Divisions of Local Government Area

Further to the requirements of section 16 of the *Local Government Act 2009* (Act), based on available data as provided by the Electoral Commission of Queensland, Council has reviewed the proportion of electors per each of its eight divisions.

The elector numbers per division as at 31 October 2018 are as shown below:-

DIVISION 1	4924
DIVISION 2	4466
DIVISION 3	4929
DIVISION 4	4000
DIVISION 5	4405
DIVISION 6	4404
DIVISION 7	5022
DIVISION 8	4417

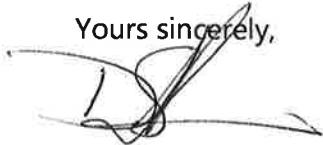
Section 15 of the Act requires that each division must have a reasonable proportion of electors which is defined as being the total number of electors divided by the number of Councillors (other than the Mayor), plus or minus in our case 10%.

With a total of 36,567 electors, this requires each division to have a minimum of 4114 electors and a maximum of 5028 electors. Currently this sees Division 4 being 114 electors short of the threshold and Division 7 being within 6 electors of the maximum allowed.

A copy of this advice is being forwarded to the Electoral Commissioner of Queensland as required under the Act.

In consultation with the Electoral Commissioner, the Change Commission and where appropriate Council, can you please undertake any necessary review of Council's divisional boundaries to address the proportion of elector numbers per division in line with the requirements of the Act.

Yours sincerely,

A handwritten signature in black ink, appearing to be 'Dimitri Scordalides', written over a horizontal line.

**Dimitri Scordalides**  
**Acting Chief Executive Officer**

cc: Electoral Commissioner of Queensland, GPO Box 1393, Brisbane Q 4000

# **APPENDIX B**

## **Public Suggestions**



**Divisional Boundary Review of Gympie Regional Council**  
**List of Public Suggestions**

<b>Suggestion</b>	<b>Name / Organisation</b>
<b>1</b>	Daniel Stewart
<b>2</b>	Michelle
<b>3</b>	Ash

**Sent:** Tuesday, 30 April 2019 7:43 AM  
**To:** LG CC Submissions  
**Subject:** (78654) Gympie Regional Local Government Area - Daniel Stewart

Online submission for **Gympie Regional Local Government Area** from **Daniel Stewart**

---

### **Submission Details**

**Name:** Daniel Stewart

**Submission Text:** Gympie Regional Council Divisional boundary changes. Since Division 4 is significantly under quota and Div 7 is over quota, it may be opportune to adjust other divisions as well. These are possible changes in order of need: 1. In regard to divisions 4 and 7 which abut, the simplest solution is to transfer some of the Southside nearest Kidd Bridge from Div 7 to Div 4. 2. Div 3 which has almost 8% more than the average number of voters crosses the river where there is no bridge. By transferring its area on the western side of the river (Widgee Crossing South, The Palms, Glastonbury etc) to Div 6, that will bring both divisions closer to the average. 3. Div 1 which has more the 8% of average is also relatively isolated, separated from the rest of the region by extensive plantation forest. However, consideration could be given to Div 2 to include the western portion of Div 1. 4. The boundary between Div 5 and Div 8 could be moved south such that Div 5 could include Kybong and Tandur and possibly Traveston, bringing both divisions closer to the average.

**File Upload:** No file uploaded ()

---

**Sent:** Tuesday, 30 April 2019 8:30 PM  
**To:** LG CC Submissions  
**Subject:** (78666) Gympie Regional Local Government Area - Michelle

Online submission for **Gympie Regional Local Government Area** from **Michelle**

---

#### **Submission Details**

**Name:** Michelle

**Submission Text:** I believe that the gympie regional council does not require divisions at all. When the amalgamation first happened we didn't have divisions and i believe it worked well. We could vote for 8 councillors and not just one for your particular division Ratepayers could contact anyone of the councillors with their problem and not just be confined to one particular councillor that was voted for their division.

**File Upload:** No file uploaded ()

---

**Sent:** Tuesday, 30 April 2019 10:16 PM  
**To:** LG CC Submissions  
**Subject:** (78667) Gympie Regional Local Government Area - Ash

Online submission for **Gympie Regional Local Government Area** from **Ash**

---

#### **Submission Details**

**Name:** Ash

**Submission Text:** Make gympie council area smaller it is to big for one council to manage. The roads are terrible because they do not have enough crews to cover the large area, also mowing is never done. Need another council near kilkivan to service the area out around kilkivan and goomeri area

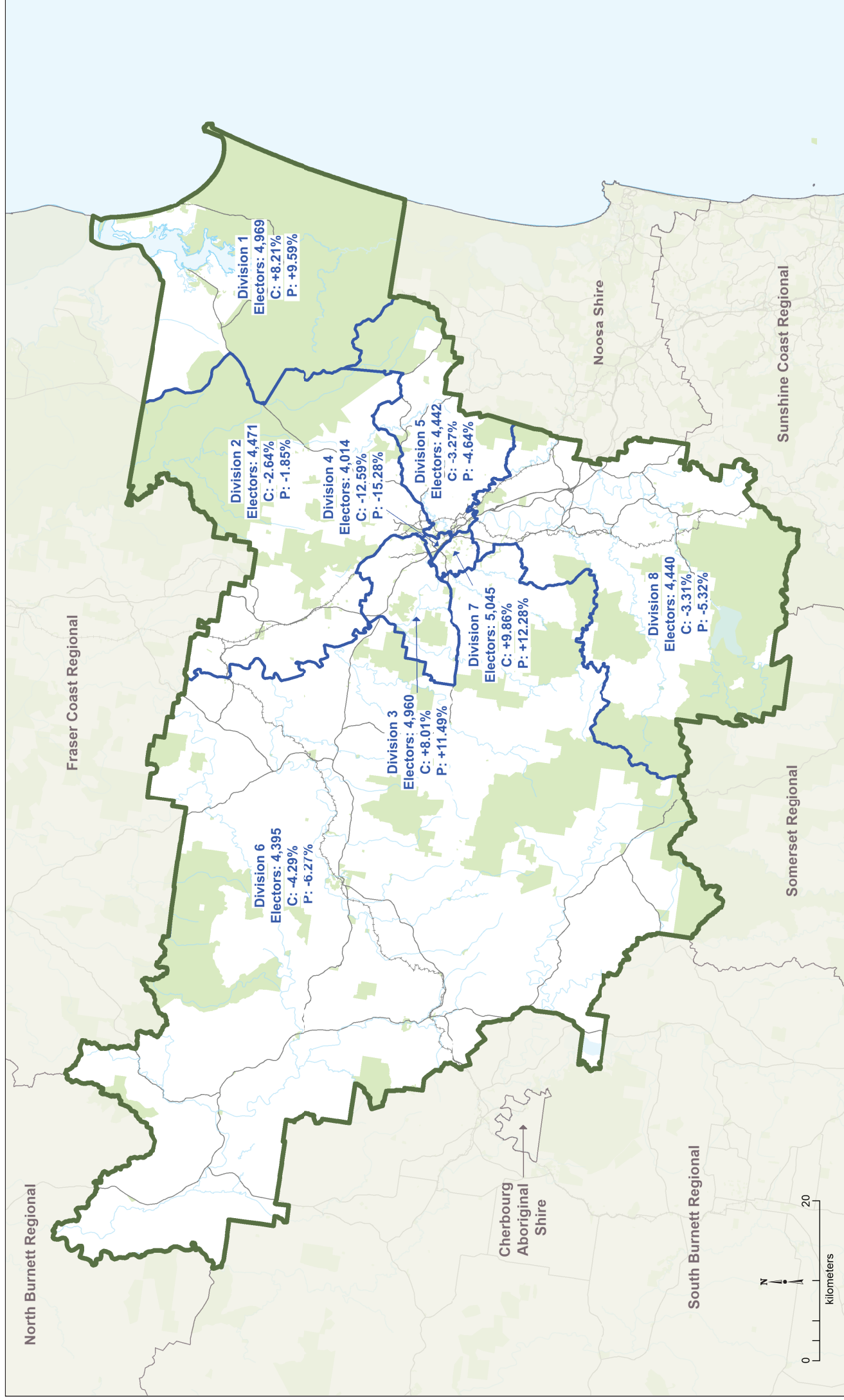
**File Upload:** No file uploaded ()

---

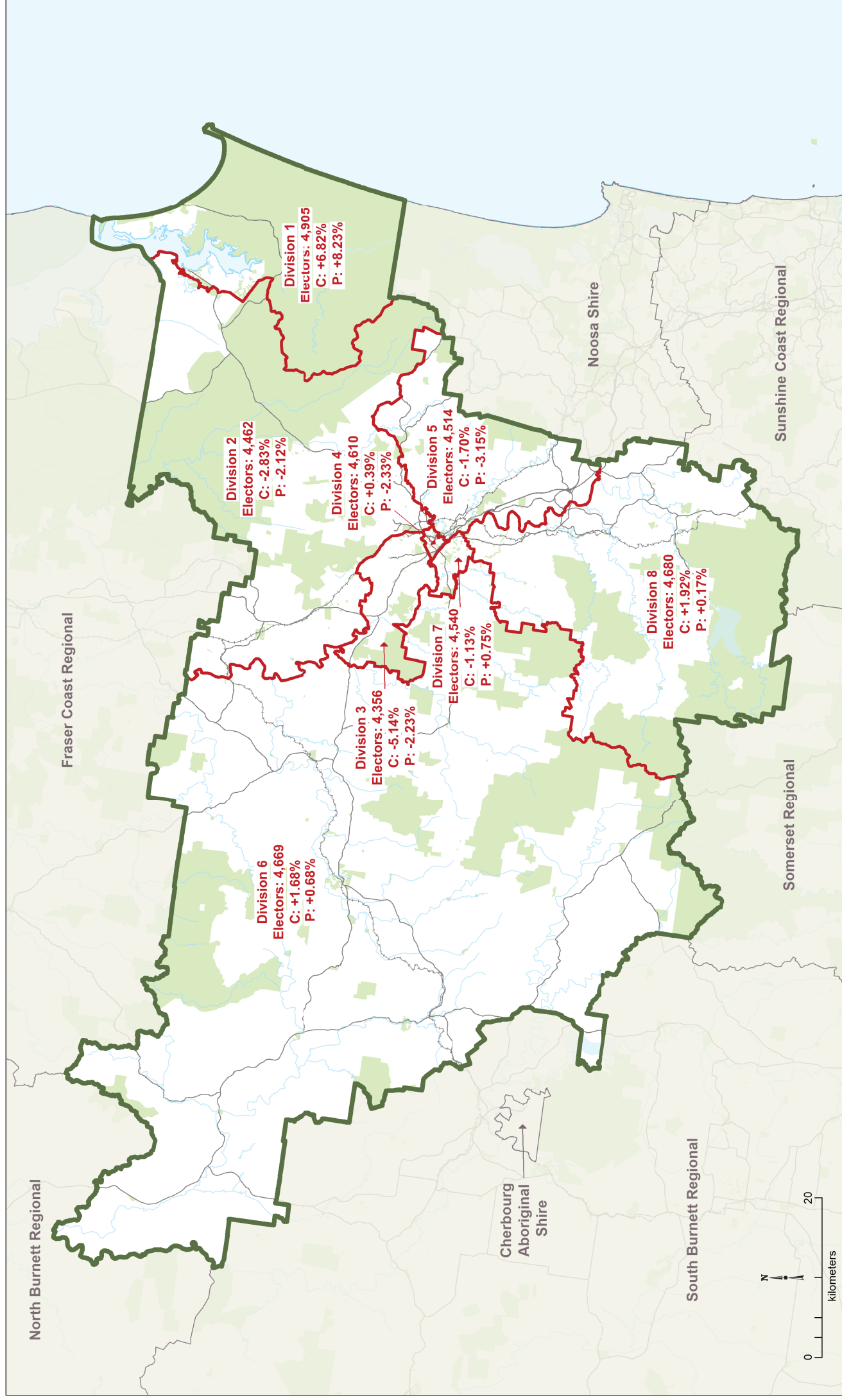
# **APPENDIX C**

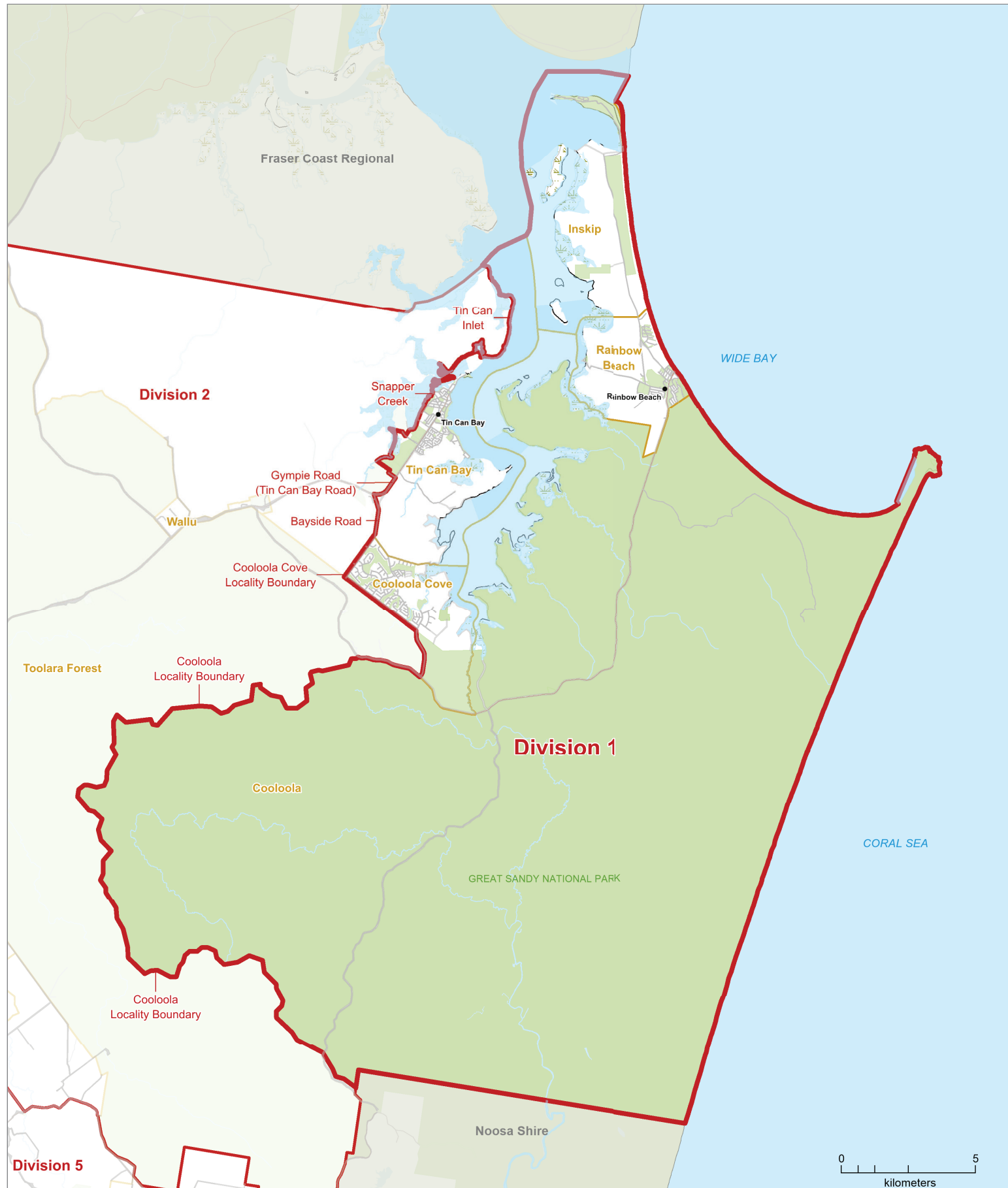
## **Maps**

# GYMPIE REGIONAL Existing Electoral Divisions



# GYMPIE REGIONAL Proposed Electoral Divisions

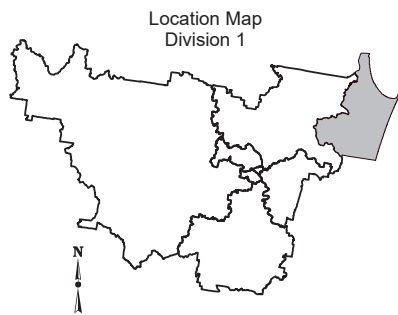




**2019**  
**Local Government Area**  
**Divisional Boundary Review**

**PROPOSED DIVISIONAL BOUNDARIES**

**GYMPIE REGIONAL**  
**Division 1**



**LEGEND**

- |  |                            |  |                   |
|--|----------------------------|--|-------------------|
|  | Proposed Division Boundary |  | Reserve, Parkland |
|  | Proposed Adjacent Division |  | Waterbody         |
|  | Locality Boundary          |  | Railway           |
|  | Adjacent Council           |  | Main Road         |
|  |                            |  | Wetland           |

This product was created using datasets from various authoritative sources, and is intended as a guide only to display proposed divisional boundaries.

The digital GIS data is available FREE to download from Queensland Spatial Catalogue, or Qspatial, at <http://qldspatial.information.qld.gov.au>

© The State of Queensland - 2019 (Department of Natural Resources, Mines and Energy)  
 © Electoral Commission of Queensland 2019 Creative Commons (CC BY)



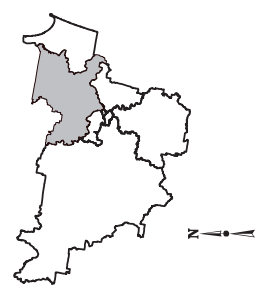
## ED DIVISIONAL UNDARIES

**PIE REGIONAL**  
**Division 2**

## LEGEND

- Proposed Division Boundary  
Proposed Adjacent Division  
Locality Boundary  
Adjacent Council  
Reserve, Parkland  
Waterbody  
Railway  
Main Road  
Wetland

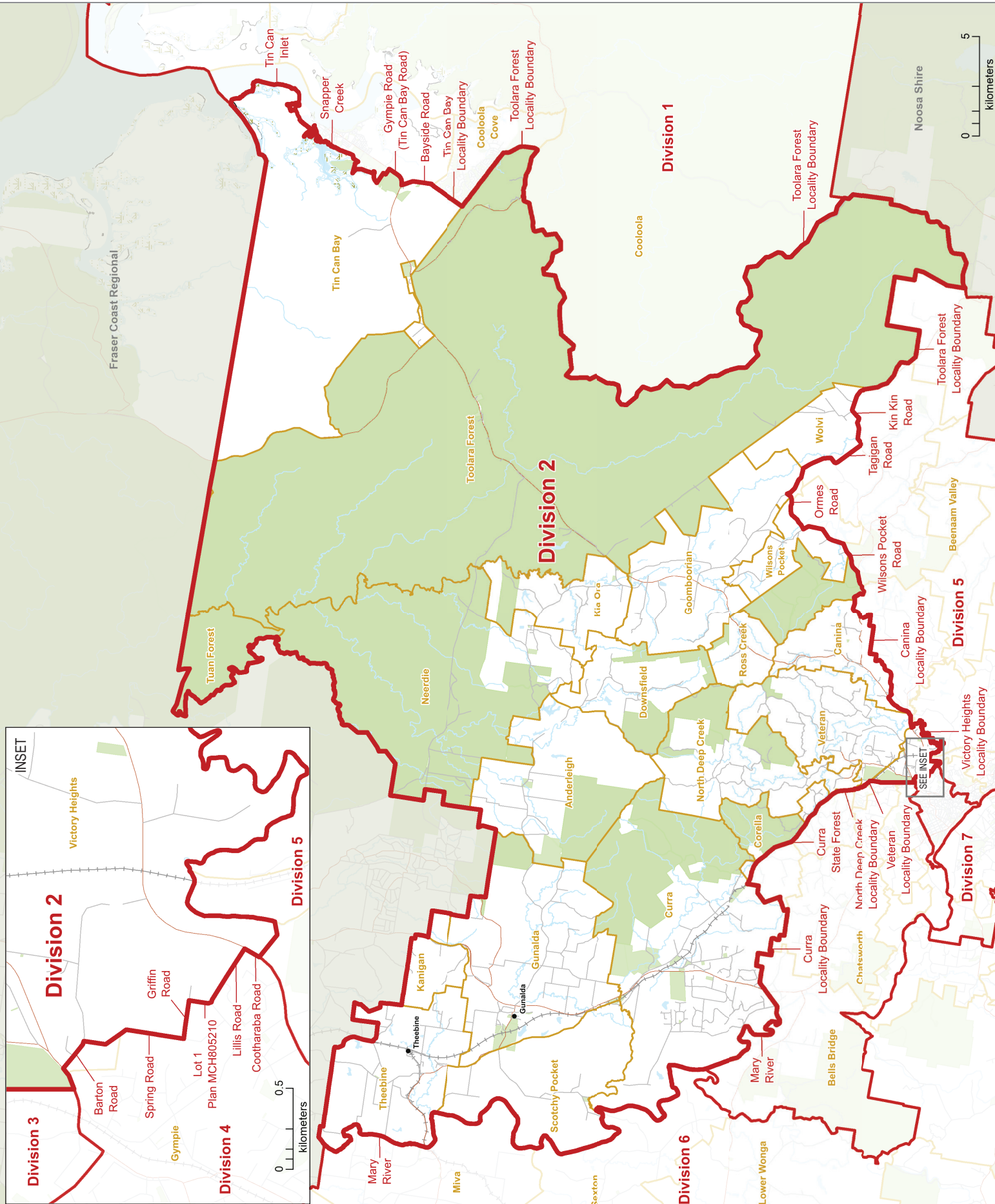
Location Map  
Division 2



This product was created using datasets from various authoritative sources, and is intended as a guide only to display proposed divisional boundaries.

The digital GIS data is available FREE to download from Queensland Spatial Catalogue, or Qspatial, at <http://qldspatial.information.qld.gov.au>

© The State of Queensland - 2019 (Department of Natural Resources, Mines and Energy)  
© Electoral Commission of Queensland 2019  
Creative Commons (CC BY)








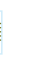



**PROPOSED DIVISIONAL  
BOUNDARIES**

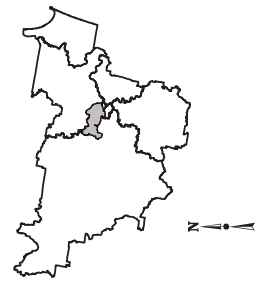
**GYMPIE REGIONAL**

**Division 3**

**LEGEND**

-  Proposed Division Boundary
-  Proposed Adjacent Division
-  Locality Boundary
-  Adjacent Council
-  Reserve, Parkland
-  Waterbody
-  Railway
-  Main Road
-  Welland

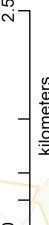
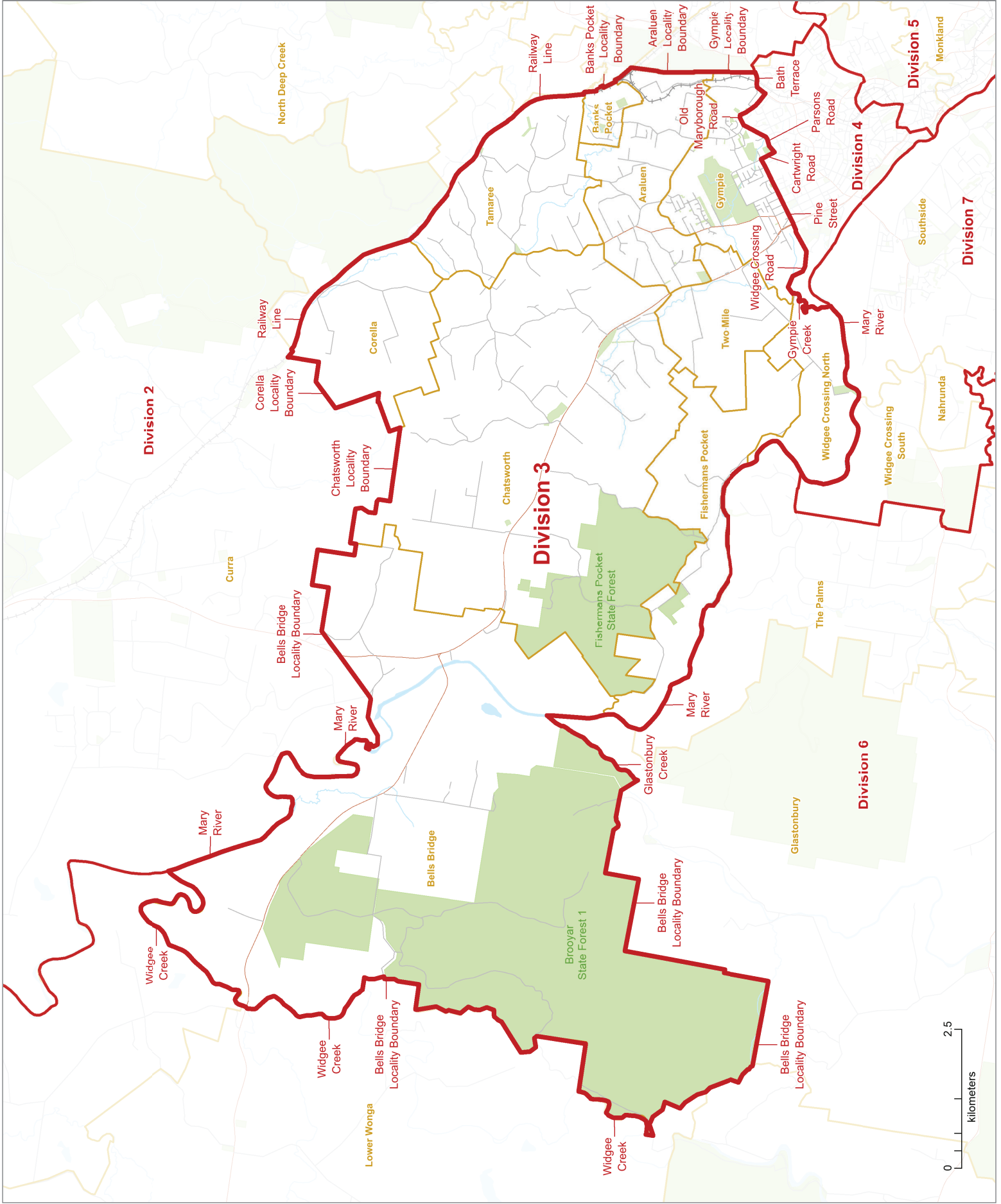
Location Map  
Division 3



This product was created using datasets from various authoritative sources, and is intended as a guide only to display proposed divisional boundaries.

The digital GIS data is available FREE to download from Queensland Spatial Catalogue or Qspatial, at <http://qdsportal.information.qld.gov.au>

© The State of Queensland - 2019 (Department of Natural Resources, Mines and Energy)  
© Electoral Commission of Queensland 2019  
Creative Commons (CC BY)



**PROPOSED DIVISIONAL  
BOUNDARIES**

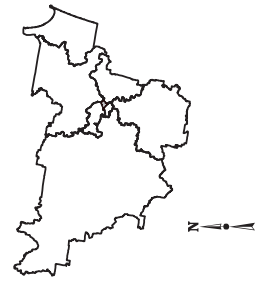
**GYMPIE REGIONAL**

**Division 4**

**LEGEND**

- Proposed Division Boundary
- Proposed Adjacent Division
- Locality Boundary
- Adjacent Council
- Reserve, Parkland
- Waterbody
- Railway
- Main Road
- Wetland

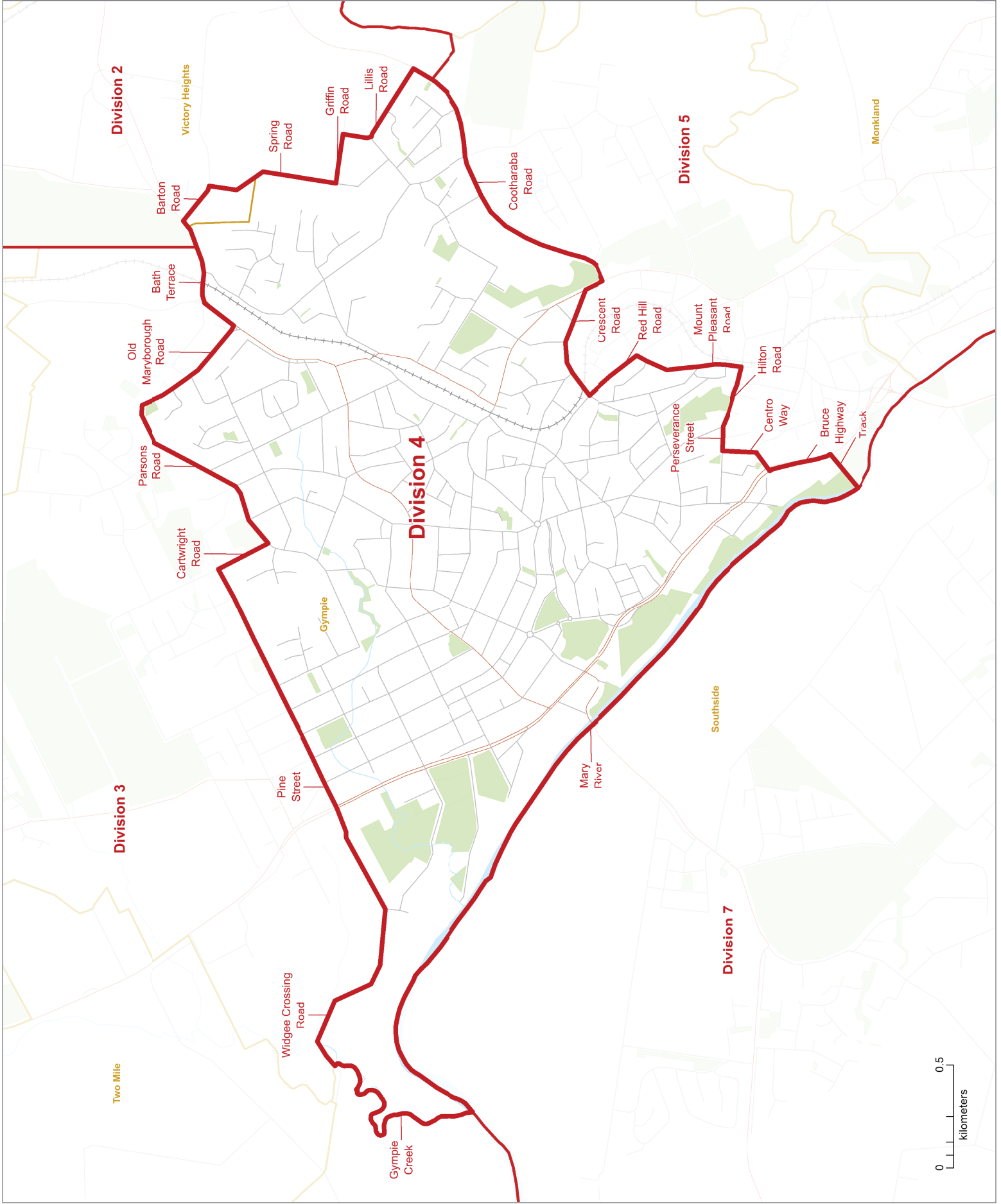
Location Map  
Division 4



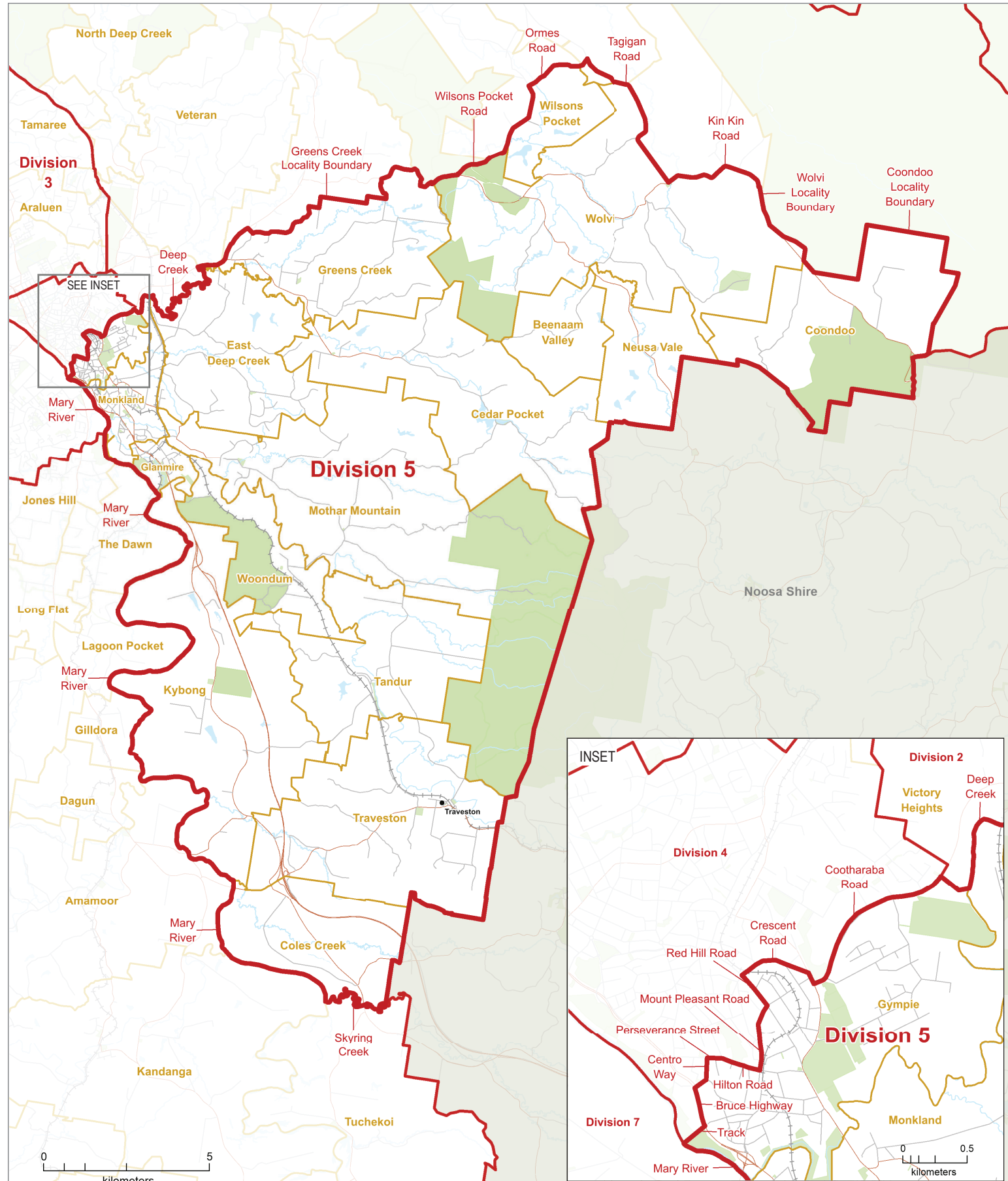
This product was created using datasets from various authoritative sources, and is intended as a guide only to display proposed divisional boundaries.

The digital GIS data is available FREE to download from Queensland Spatial Catalogue or Qspatial, at <http://qdsportal.information.qld.gov.au>

© The State of Queensland - 2019 (Department of Natural Resources, Mines and Energy)  
© Electoral Commission of Queensland 2019  
Creative Commons (CC BY)







**2019**  
**Local Government Area**  
**Divisional Boundary Review**  
**PROPOSED DIVISIONAL BOUNDARIES**  
**GYMPIE REGIONAL**  
**Division 5**



**LEGEND**

	Proposed Division Boundary		Reserve, Parkland
	Proposed Adjacent Division		Waterbody
	Locality Boundary		Railway
	Adjacent Council		Main Road
			Wetland

This product was created using datasets from various authoritative sources, and is intended as a guide only to display proposed divisional boundaries.

The digital GIS data is available FREE to download from Queensland Spatial Catalogue, or Qspatial, at <http://qldspatial.information.qld.gov.au>








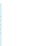

© The State of Queensland - 2019 (Department of Natural Resources, Mines and Energy)  
 © Electoral Commission of Queensland 2019 Creative Commons (CC BY)

**PROPOSED DIVISIONAL  
BOUNDARIES**

**GYMPIE REGIONAL**

**Division 6**

**LEGEND**

-  Proposed Division Boundary
-  Proposed Adjacent Division
-  Locality Boundary
-  Adjacent Council
-  Reserve, Parkland
-  Waterbody
-  Railway
-  Main Road
-  Welland

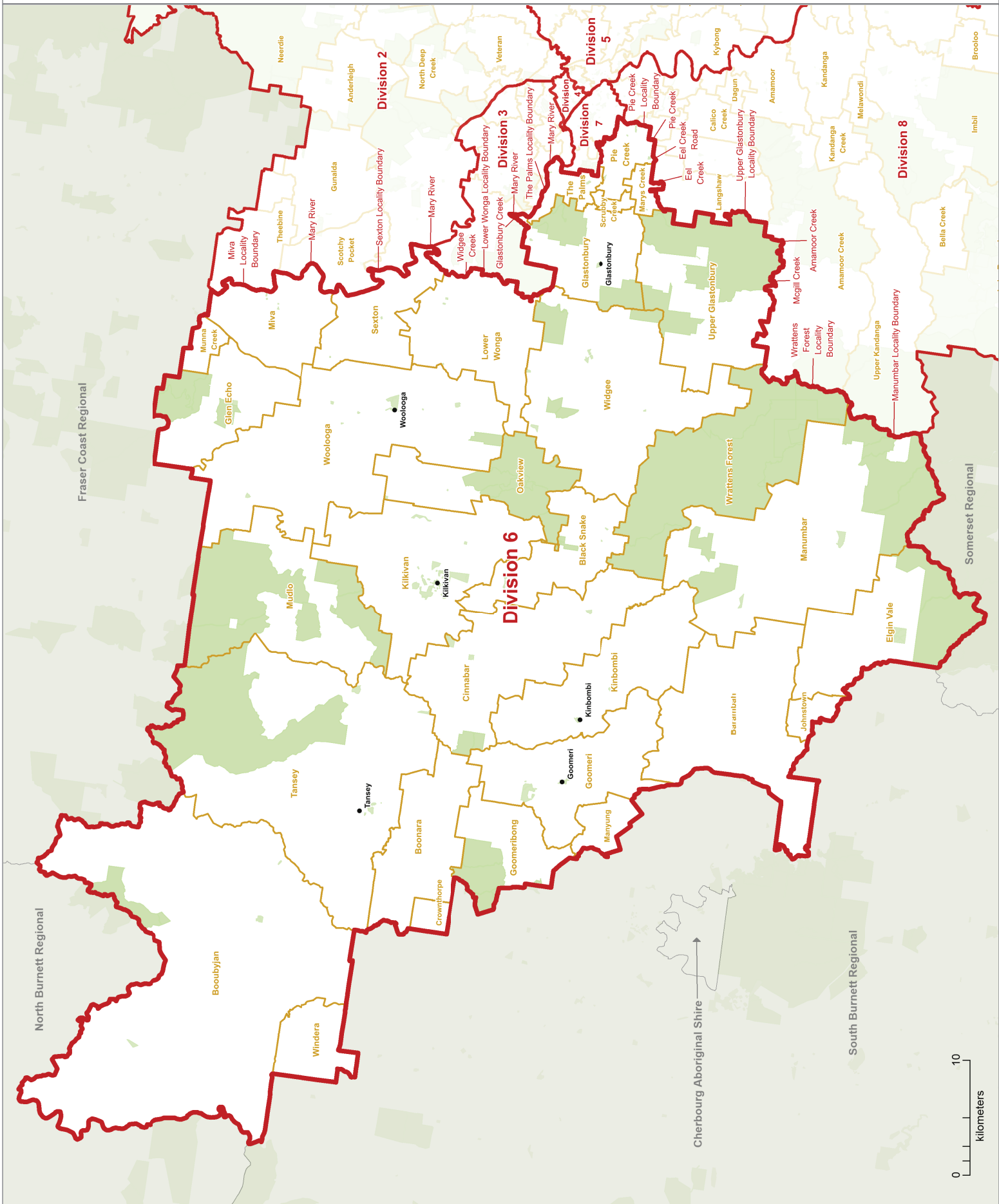
Location Map  
Division 6



This product was created using datasets from various authoritative sources, and is intended as a guide only to display proposed divisional boundaries.

The digital GIS data is available FREE to download from Queensland Spatial Catalogue or Qspatial, at <http://qdsportal.information.qld.gov.au>

© The State of Queensland - 2019 (Department of Natural Resources, Mines and Energy)  
© Electoral Commission of Queensland 2019  
Creative Commons (CC BY)



**PROPOSED DIVISIONAL**  
**BOUNDARIES**

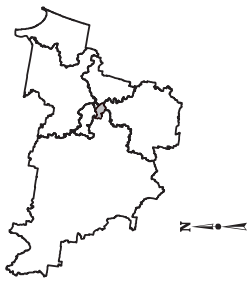
**GYMPIE REGIONAL**

**Division 7**

**LEGEND**

- Proposed Division Boundary
- Proposed Adjacent Division
- Locality Boundary
- Adjacent Council
- Reserve, Parkland
- Waterbody
- Railway
- Main Road
- Welland

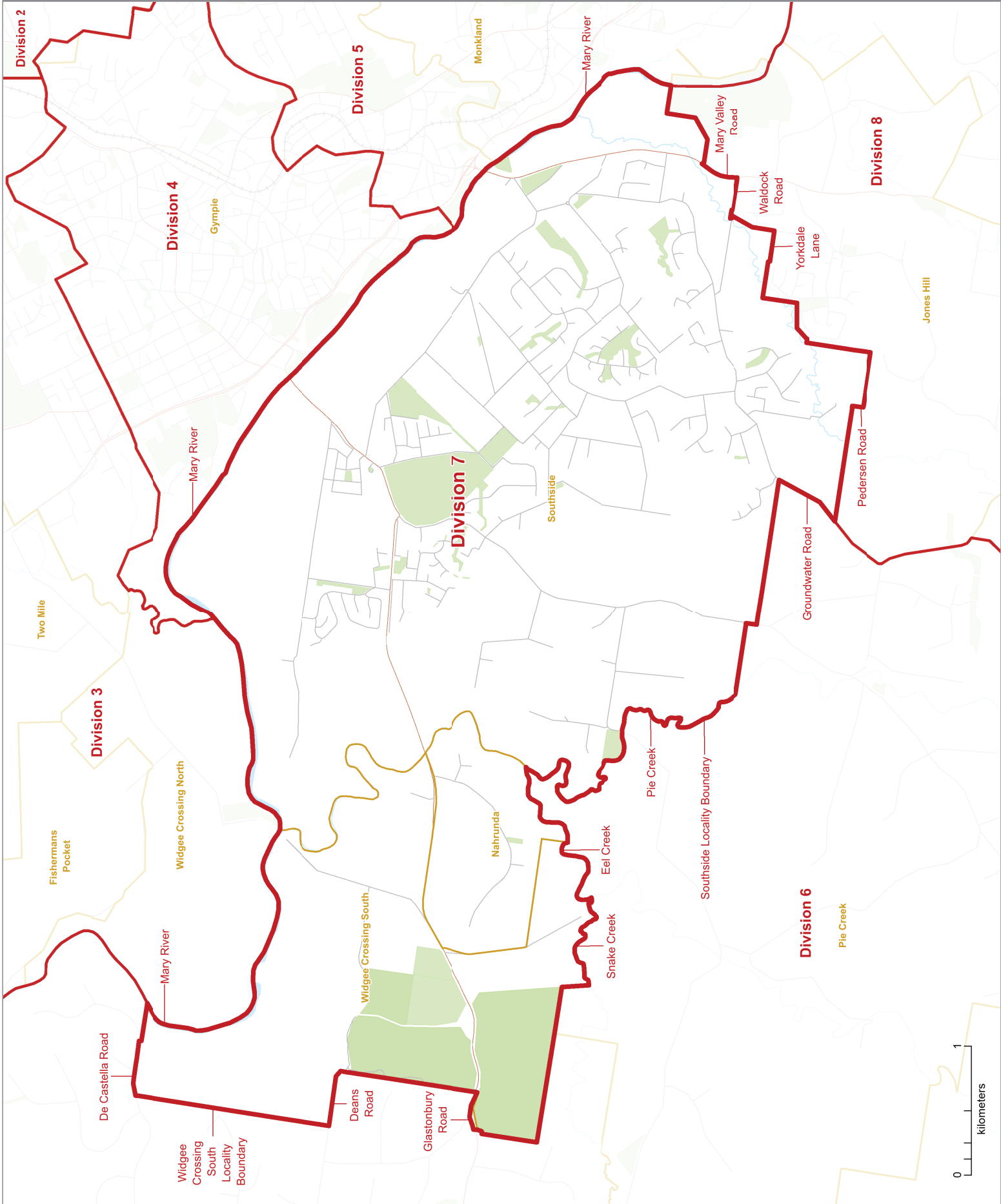
Location Map  
Division 7



This product was created using datasets from various authoritative sources, and is intended as a guide only to display proposed divisional boundaries.

The digital GIS data is available FREE to download from Queensland Spatial Catalogue or Qspatial, at <http://qdsportal.information.qld.gov.au>

© The State of Queensland - 2019 (Department of Natural Resources, Mines and Energy)  
© Electoral Commission of Queensland 2019  
Creative Commons (CC BY)





**PROPOSED DIVISIONAL  
BOUNDARIES**

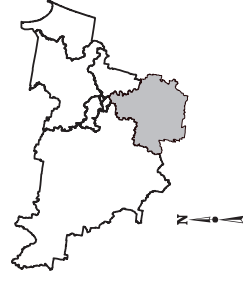
**GYMPIE REGIONAL**

**Division 8**

**LEGEND**

- Proposed Division Boundary
- Proposed Adjacent Division
- Locality Boundary
- Adjacent Council
- Reserve, Parkland
- Waterbody
- Railway
- Main Road
- Wellland

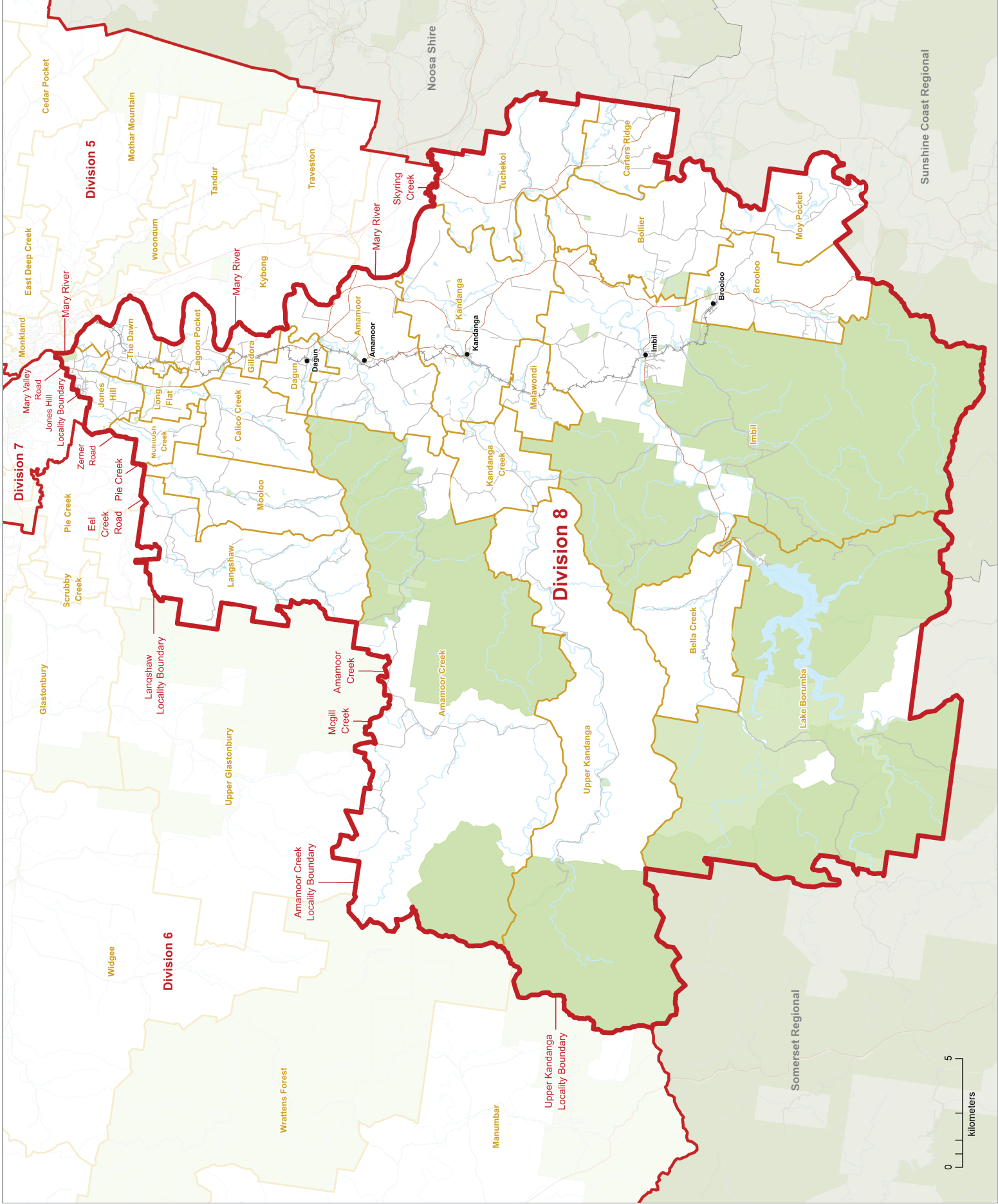
Location Map  
Division 8



This product was created using datasets from various authoritative sources, and is intended as a guide only to display proposed divisional boundaries.

The digital GIS data is available FREE to download from Queensland Spatial Catalogue or Qspatial, at <http://qdsportal.information.qld.gov.au>

© The State of Queensland - 2019 (Department of Natural Resources, Mines and Energy)  
© Electoral Commission of Queensland 2019  
Creative Commons (CC BY)



# LOCAL GOVERNMENT CHANGE COMMISSION

---

W: [www.ecq.qld.gov.au](http://www.ecq.qld.gov.au)

E: [LGCCsubmissions@ecq.qld.gov.au](mailto:LGCCsubmissions@ecq.qld.gov.au)

T: 1300 881 665

P: Local Government Change Commission  
GPO Box 1393  
BRISBANE QLD 4001