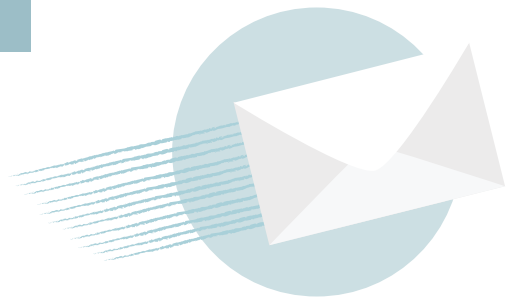


Journey of your

postal vote

information sheet



Who can postal vote?

Anyone can apply for a postal vote by going to the Electoral Commission of Queensland (ECQ) website at ecq.qld.gov.au when postal voting applications open before each election.

Once your postal vote arrives in the mail, there are 5 easy steps to cast your vote. Remember you MUST vote before 6pm on election day.

- 1** Open and complete your ballot paper. Don't wait. You can do it as soon as you receive it. Follow the instructions on the ballot paper/s so you vote correctly.
- 2** After voting, fold your ballot paper/s in half and put your ballot paper/s in the declaration envelope and seal it. It is very important that you put your ballot paper/s inside the declaration envelope.
- 3** Sign the declaration envelope where it says **You sign here**. Have a witness sign where it says **Your witness signs here**.
- 4** Put your sealed and signed declaration envelope into the Reply Paid envelope.
- 5** Post the Reply Paid envelope right away.

Votes must be received by the ECQ within 10 days after election day to be included in the count. If a vote is received **AFTER** the deadline, it can't be included. These votes are recorded and stored.

The counting of all votes begins after 6pm on election day.

Follow these links to find out more about how to vote at ecq.qld.gov.au/how-to-vote/voting-systems or assisted voting services at ecq.qld.gov.au/how-to-vote/voter-assistance.

Journey of your postal vote

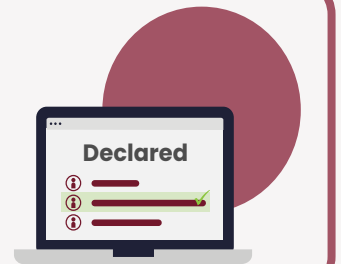
What happens after your postal vote is mailed to the ECQ?



This is the journey for every postal vote. After they arrive at the ECQ, they are checked for formality, counted, recounted, and the result verified.

This process is repeated until all votes are received or until 10 days after election day. When all possible votes are in, a distribution of preferences may commence.

When the outcome is certain, the successful candidate is declared.



Electoral Commission
QUEENSLAND