



**Electoral
Commission**
QUEENSLAND

2022 CALLIDE
STATE BY-ELECTION

Election Report

Interpreter statement

If you have difficulty in understanding the election report, you can contact us by telephone 1300 881 665 and we will arrange an interpreter to effectively communicate the document to you.

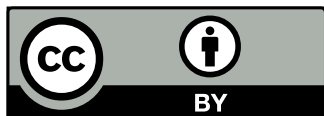


Acknowledgement of Country

The Electoral Commission of Queensland acknowledges the Traditional Owners of country throughout Australia, and their connection to land and community. We pay our respects to all Traditional Owners, and Elders past, present and emerging.

Copyright

© Electoral Commission of Queensland 2022



Licence

This election report is licensed by the Electoral Commission of Queensland under a Creative Commons Attribution (CC BY) 4.0 International licence.

In essence, you are free to copy, communicate and adapt this election report, as long as you attribute the work to the Electoral Commission of Queensland.

To view a copy of this licence, visit <http://creativecommons.org/licenses/by/4.0/>

Attribution

Content from this election report should be attributed as the Electoral Commission of Queensland 2022 Callide by-election - Election Report.

This report is available for downloading from the ECQ's website www.ecq.qld.gov.au and in paper form. Enquiries and requests for a paper copy of this report may be directed to:

Electoral Commission of Queensland

Website: www.ecq.qld.gov.au
Telephone: 1300 881 665
Email: ecq@ecq.qld.gov.au

Contents

Introduction	1
By-election snapshot.....	2
By-election timetable.....	3
Voter services.....	4
Enrolment.....	4
Nominations.....	4
Election day voting	4
Early voting.....	7
Postal voting.....	7
Electronically assisted voting.....	7
Election staff.....	8
Accessibility services.....	8
Communication and awareness	9
Analysis of voter behaviour	9
Election results.....	11
Compliance services.....	12
Electoral participant compliance.....	12
Voter compliance	12
Review of informal voting.....	13
Overview	13
Methodology.....	13
Review results	14
Interpretation.....	15
Conclusion.....	16
Appendices.....	18



5 December 2022



The Honourable Shannon Fentiman MP
Attorney-General and Minister for Justice
Minister for Women and Minister for the Prevention of Domestic and Family Violence
1 William Street
BRISBANE QLD 4000
Email: attorney@ministerial.qld.gov.au

Dear Attorney-General

On behalf of the Electoral Commission of Queensland, I am pleased to submit for presentation to the Queensland Parliament, the 2022 Callide State by-election report.

In accordance with section 18(2) of the *Electoral Act 1992*, the report details the operation of part 7 of the *Electoral Act* in relation to the by-election held on Saturday, 18 June 2022.

Yours sincerely,

A handwritten signature in black ink, appearing to read "Pat Vidgen".

Pat Vidgen PSM
Electoral Commissioner

Introduction

On Saturday, 18 June 2022, the Electoral Commission of Queensland (ECQ) conducted a by-election for the State electoral district of Callide.

On 29 March 2022, a vacancy arose in the Legislative Assembly following the resignation of the sitting member for Callide, Mr Colin Boyce, to run as a candidate in the 2022 federal election.

The Honourable Curtis Pitt MP, Speaker of the Legislative Assembly, issued a writ for a by-election to fill the vacancy on Monday, 23 May 2022. The writ directed the ECQ to conduct the by-election on Saturday, 18 June 2022 and included the dates for the cut-off of the electoral roll, the close of candidate nominations and the date by which the writ must be returned.

The writ was issued by the Speaker under section 83(1)(b) of the *Electoral Act 1992*, as the vacancy arose when the Legislative Assembly was sitting.

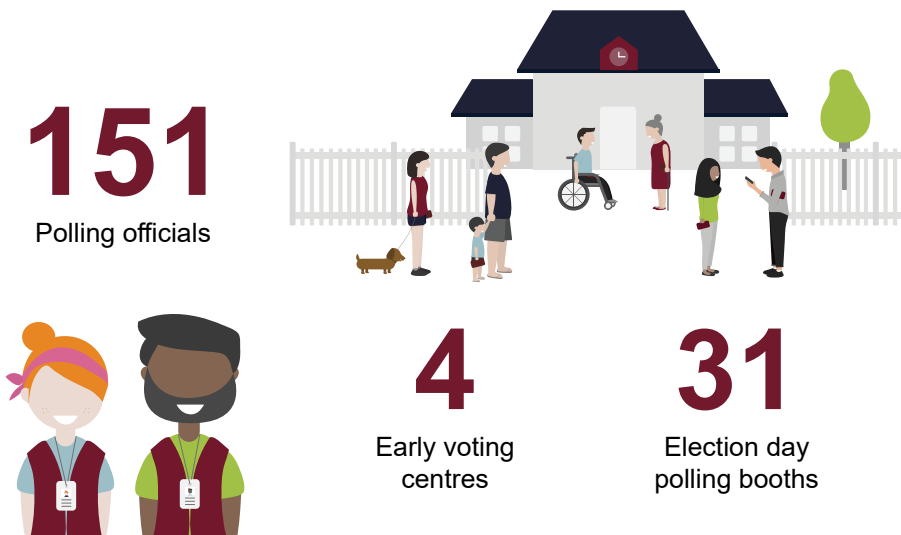
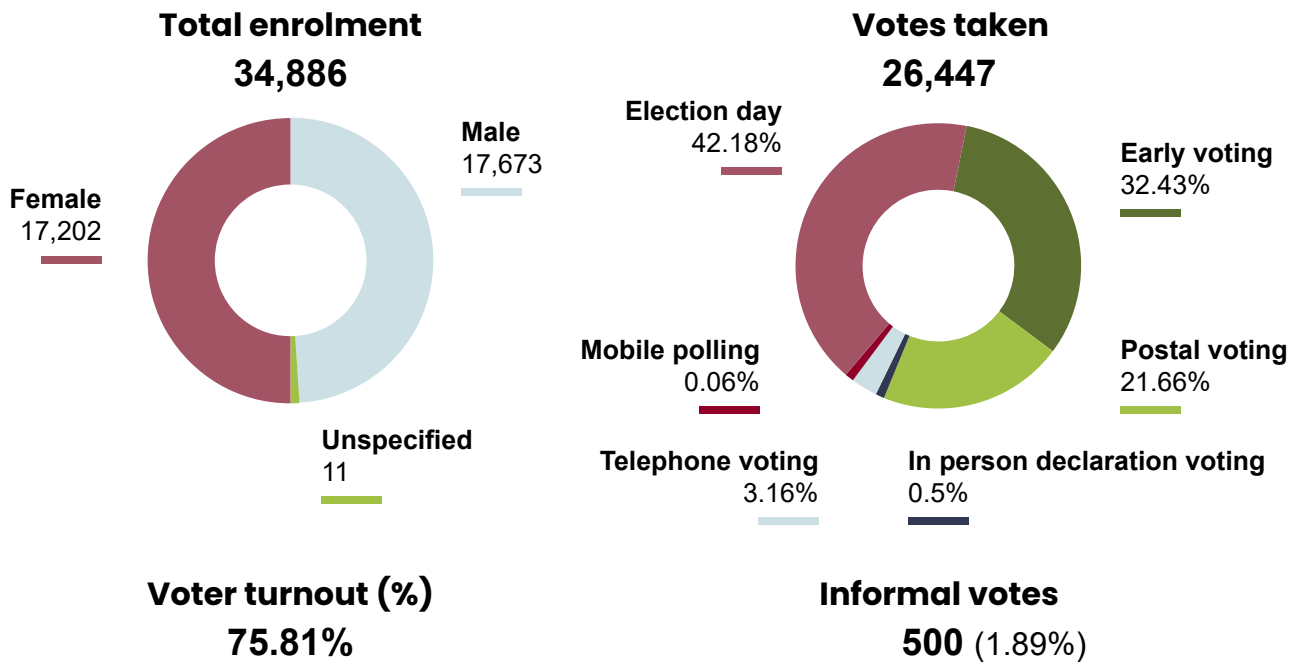
This was the second State by-election held during the term of the 57th Parliament of Queensland. Based on experience delivering COVID-safe elections, the ECQ planned for and implemented a range of measures to protect the health and safety of voters, staff, candidates and volunteers.

Overall, 26,447 votes were cast over the election period, which represents a turnout of 75.81 per cent. Declines in by-election turnout compared to a general election are common, and this was the case in Callide where turnout at the 2020 State general election was 88.24 per cent.

On Thursday, 23 June 2022, the ECQ declared Mr Bryson Warwick Head of the Liberal National Party of Queensland as the successful candidate based on first preference votes and returned the writ to the Speaker of the Legislative Assembly of Queensland.

The name of the elected candidate was published in the Queensland Government Gazette on 23 June 2022. A copy of the writ and gazetted results notice is available in **Appendix A**.

By-election snapshot



- Candidates in ballot paper order**
- JARRY, Fabrice
LEGALISE CANNABIS QLD (PARTY)
 - GILBARD, Paula
ANIMAL JUSTICE PARTY
 - BURLING, Adam
KAP
 - LOHSE, Sharon
PAULINE HANSON'S ONE NATION
 - HEAD, Bryson
LNP
 - DENDLE, Bronwyn
AUSTRALIAN LABOR PARTY

Returning Officer (RO): Robert McInnes

RO Office: 60 Kariboe Street
Biloela QLD 4715

Voting system: Full preferential voting

Elected candidate: Mr Bryson Warwick Head
(Liberal National Party of Queensland)

By-election timetable

Writ issued	Monday, 23 May 2022
Electoral roll closed	Friday, 27 May 2022, 5.00pm
Candidate nominations closed	Tuesday, 31 May 2022, 12.00pm
Ballot paper order draw	Tuesday, 31 May 2022, 2.30pm
Postal voting application period	Monday, 23 May 2022 to Monday, 6 June 2022, 7.00pm
Early voting period	Monday, 6 June 2022, 9.00am to Friday, 17 June 2022, 6.00pm
Electronically assisted (telephone) voting period	Monday, 6 June 2022, 9.00am to Saturday, 18 June 2022, 6.00pm
How-to-vote card lodgement deadline	Friday, 10 June 2022, 5.00pm
Election day voting	Saturday, 18 June 2022, 8.00am to 6.00pm
Deadline for completing postal votes	Saturday, 18 June 2022, 6.00pm
Writ returned	Thursday, 23 June 2022
Cut-off for the return of postal votes	Tuesday, 28 June 2022, 6.00pm
Cut-off for filing a challenge to the result	Thursday, 30 June 2022
Last date for return of writ	Wednesday, 20 July 2022
Cut-off for the return of election summary returns	Tuesday, 4 October 2022

Voter services

The ECQ offered a variety of voting services to encourage and enable eligible Callide voters to enrol to vote and safely cast a formal ballot. While the by-election was primarily an attendance-based election, the services delivered were adjusted in response to the COVID-19 environment. Initiatives implemented by the ECQ at previous elections were again in place for this by-election, ensuring the safety and security of voters, election staff and the wider Queensland community. These include:

- ▶ maintaining physical distancing in polling places
- ▶ regularly cleaning surfaces
- ▶ providing resources for regular handwashing and hand sanitation, and
- ▶ requiring temporary election staff to be fully vaccinated for COVID-19.

Enrolment

At the close of the electoral roll on Friday, 27 May 2022, the electorate of Callide had 34,886 enrolled voters.


New enrolments and change of detail updates were accepted until 6.00pm on Friday, 17 June 2022. Voters who updated their details during this period may have had to complete a declaration vote to enable staff to verify their enrolment or updated information.

Nominations

Nominations for candidates opened the day after the issue of the writ, on Tuesday, 24 May 2022 and closed at noon on Tuesday, 31 May 2022. At the close of nominations, six candidates, all endorsed by registered political parties, were nominated.

Once nominations closed, a ballot paper order draw was conducted at 2.30pm on Tuesday, 31 May 2022. The Returning Officer, in the presence of witnesses, drew the names of each of the nominated candidates to determine the order in which the candidates' names were to appear on the ballot paper.

Callide



ELECTORAL ACT 1992

BALLOT PAPER

Election of a Member of the Legislative Assembly of
Queensland for the Electoral District of
Callide, 18 June 2022

Instructions

You must number every square in the order of your preference

<input type="checkbox"/>	JARRY, Fabrice <small>LEGALISE CANNABIS QLD (PARTY)</small>
<input type="checkbox"/>	GILBARD, Paula <small>ANIMAL JUSTICE PARTY</small>
<input type="checkbox"/>	BURLING, Adam <small>KAP</small>
<input type="checkbox"/>	LOHSE, Sharon <small>PAULINE HANSON'S ONE NATION</small>
<input type="checkbox"/>	HEAD, Bryson <small>LNP</small>
<input type="checkbox"/>	DENDLE, Bronwyn <small>AUSTRALIAN LABOR PARTY</small>

Remember to number every box to ensure your vote counts
Authorised by the Electoral Commission of Queensland

Election day voting

On election day, Saturday, 18 June 2022, 31 polling booths operated from 8.00am to 6.00pm in the Callide electorate. Polling booth details are listed below.

Election day polling booths

Venue name	Building name	Address	Disability access
Banana	Banana State School	32 Bramston Street Banana QLD 4702	Assisted
Baralaba	Baralaba State School	1 Power Street Baralaba QLD 4702	Full
Bell	Bell State School	90 Dennis Street Bell QLD 4408	Full
Biggenden	Biggenden State School	9 Frederick Street Biggenden QLD 4621	Assisted
Biloela	Biloela State School	48 Rainbow Street Biloela QLD 4715	Full
Brigalow	Brigalow State School	24409 Warrego Highway Brigalow QLD 4412	Assisted
Bullyard	Bullyard State School	2359 Bucca Road Bullyard QLD 4671	Full
Calliope	Calliope State School	Dawson Highway Calliope QLD 4680	Full
Chinchilla	Our Lady Help of Christians Church Hall	74 Middle Street Chinchilla QLD 4413	Assisted
Chinchilla North	Chinchilla Burstows Lodge	Cnr Boyd and Wambo Streets Chinchilla QLD 4413	Full
Drillham	Drillham State School	13 Jardine Street Drillham QLD 4424	Assisted
Eidsvold	Eidsvold Community Hall	54 Moreton Street Eidsvold QLD 4627	Assisted
Gayndah	Gayndah QCWA Hall	5 Pineapple Street Gayndah QLD 4625	Assisted
Gin Gin	Gin Gin RSL Hall	37 Mildren Street Gin Gin QLD 4671	Full
Jambin	Jambin State School	Cnr Burnett Highway and Threeways Road Jambin QLD 4702	Assisted
Jandowae	Jandowae Memorial Hall	38 George Street Jandowae QLD 4410	Full
Jimbour	Jimbour State School	2421 Dalby-Jandowae Road Jimbour QLD 4352	Full

Venue name	Building name	Address	Disability access
Miles	Leichhardt Centre	29 Dawson Avenue Miles QLD 4415	Full
Monto	Monto State High School	1 Mouatt Street Monto QLD 4718	Assisted
Mount Perry	Mount Perry Community Hall	62 Heusman Street Mount Perry QLD 4671	Full
Moura	Moura Tennis Club	12 Nott Street Moura QLD 4718	Assisted
Mulgildie	Mulgildie State School	2 Brigalow Street Mulgildie QLD 4630	Full
Mundubbera	Mundubbera CWA Hall	79 Lyons Street Mundubbera QLD 4626	Full
Taroom	Taroom State School	Wolsey Street Taroom QLD 4626	Full
Thangool	Thangool State School	2 Aerodrome Road Thangool QLD 4716	Full
Theodore	Theodore Memorial RSL Hall	30 The Boulevard Theodore QLD 4719	Full
Ubobo	Ubobo Memorial Hall	Cnr Railway Terrace and Cedarvale Road Ubobo QLD 4680	Full
Wallaville	Wallaville State School	7 Grey Street Wallaville QLD 4671	Full
Wandoan	Wandoan State School	49 North Street Wandoan QLD 4419	Full
Warra	Warra State School	Robinson Street Warra QLD 4411	Assisted
Wowan	Wowan State School	Don Street Wowan QLD 4702	Assisted

Typically, election day voting has accounted for the majority of votes cast at Queensland elections, however during recent State and local government elections, the number of postal votes and votes cast at early voting centres has increased significantly.

Despite this decline in election day voting, approximately 42 per cent of voters in the Callide by-election cast their ballot on election day, still making it the single largest day of voting for the by-election.

Early voting

Early voting centres operated for a two-week period between Monday, 6 June 2022 and Friday, 17 June 2022 at four early voting centres.

Early voting was available from 9.00am to 5.00pm every weekday of the two-week period except Friday, 17 June 2020, when early voting centres operated from 9.00am to 6.00pm.

Approximately 32 per cent of votes in the by-election were cast at an early voting centre during this period.

Early voting centre details are listed in the table below.

Early voting centres			
Venue name	Building name	Address	Disability access
Chinchilla early voting centre	Our Lady Help of Christians Church Hall	74 Middle Street Chinchilla QLD 4413	Assisted
Gayndah early voting centre	Gayndah QCWA Hall	5 Pineapple Street Gayndah QLD 4625	Assisted
Gin Gin early voting centre	Gin Gin RSL Hall	37 Mildren Street Gin Gin QLD 4671	Full
Returning Officer, Callide	Returning Office	60 Kariboe Street Biloela QLD 4715	Assisted

Postal voting

Voters were able to apply for a postal vote from the issue of the writ on Monday, 23 May 2022 until 7.00pm on Monday, 6 June 2022. Printing and despatch of postal vote materials commenced following the ballot paper order draw on Tuesday, 31 May 2022.

There were 6656 postal votes issued during this by-election, with 5729 returned and accepted into the count. This represents almost 22 per cent of votes cast for the by-election.

Electronically assisted voting

Electronically assisted voting, commonly known as telephone voting, is a limited service primarily designed for voters who have an impairment, live a long distance from polling places or have a low level of literacy, and enables them to cast their vote anonymously via telephone.

For the Callide by-election, the Electoral Commissioner issued a notice under section 121A of the *Electoral Act 1992* and 4AA of the *Electoral Regulation 2013* to clarify classes of voters eligible to cast a telephone vote. The classes of voters were those:

- ▶ who could not vote without assistance due to an impairment or insufficient level of literacy
- ▶ who could not vote at a polling booth because of an impairment
 - ▷ this included voters who, during the by-election period, were diagnosed with COVID-19 and required to isolate under a direction issued under section 362B of the *Public Health Act 2005*
- ▶ distance voters whose enrolled address was more than 20km from a polling booth, and

- ▶ voters who could not vote at a polling booth during the voting period for the by-election, including those who were located interstate or overseas.

A copy of the notice is available in **Appendix B**.

Eligible voters are required to make two phone calls to separate call centres. In the first call, they must apply to use the service and, if eligible, receive a registration number and PIN to be used during the second phone call to mark their name off the electoral roll. This process ensures the voter's identity remains secret.

During the second phone call, an ECQ officer completes the ballot paper as dictated by the voter, with a second ECQ officer listening and observing to ensure the vote is recorded as per the elector's direction. The ECQ engages an independent auditor to perform a compliance review of the systems used for telephone voting and provide assurance the process complies in all material respects with the *Electoral Act 1992*.

As both a staff and time-intensive system of taking votes, telephone voting is designed to enfranchise the community's more vulnerable members or cater for those with a specific need such as distance voters with limited polling place access or voters with disability.

During the 2022 Callide by-election, 836 telephone votes were taken. This is a significant increase when compared with the 2020 State general election, where 135 telephone votes were cast by Callide voters.

Election staff

The ECQ relied on a large number of temporary election staff to deliver the Callide by-election. In the electorate, a Returning Officer was engaged to manage most aspects of election service delivery, including administering and resourcing venues, processing candidate nominations, conducting the ballot paper order draw and overseeing the conduct of the count.

The Returning Officer for the Callide by-election had previously been recruited through a merit-based process for the 2020 State general election and was re-employed for the Callide by-election.

Temporary election staff are also employed to undertake various functions to deliver the by-election. Applications for temporary election roles opened to the public at the issue of the writ on 23 May 2022. The ECQ contacted people who had previously worked at the 2020 State general election to advise that applications had opened. In total, the ECQ received 173 applications to work at the by-election.

A total of 150 temporary election staff (excluding the Returning Officer) were engaged, including:

- ▶ 35 supervisors to manage each polling place and ensure compliance with ECQ procedures (four during the early voting period and 31 for election day)
- ▶ three senior issuing officers to assist supervisors and issue declaration and ordinary votes on election day
- ▶ 88 issuing officers to issue ordinary votes and assist with other tasks in the polling place (18 during the early voting period and 70 for election day)
- ▶ seven count assistants to assist with counting votes and dismantling polling booths, and
- ▶ 17 election assistants to undertake general administrative duties and support the Returning Officer.

Accessibility services

The ECQ provided a variety of services to ensure accessibility at the by-election. This included:

- ▶ publishing disability access information for polling places on the ECQ website
- ▶ making available translation and interpreter services for people who speak English as a second language, and
- ▶ providing a Multilingual Guide to Voting which included voting information in twenty languages other than English.

Additionally, voters were entitled to request a person join them in the polling booth to assist them to cast their ballot. This person could act as an interpreter, read or explain the ballot paper instructions, or complete the ballot paper according to the voter's instructions and place the ballot paper in the ballot box.

'Declared institution' voting is a form of mobile polling where polling officials visit patients and residents of registered declared institutions, such as hospitals or aged care facilities, to allow them to cast a ballot. Contact was made with the registered declared institutions within the Callide district to offer a mobile polling service to residents, especially those in high care who could not otherwise attend a polling booth.

Due to the ongoing pandemic, the majority of declared institutions preferred to support their residents by assisting them through the postal voting process. In accordance with section 99(4) of the *Electoral Act 1992*, the ECQ declared one institution to be a mobile polling booth for the 2022 Callide by-election. However, very few votes were taken on-site, with most residents choosing to postal or telephone vote.

Communication and awareness

The ECQ directed significant resources to ensure there was public awareness of the election. The communication and awareness strategy for the Callide by-election was delivered through multiple channels designed to inform and educate voters and raise awareness of voting options and how to cast a formal vote. This encompassed:

- ▶ directly mailing and emailing a voter information card to all enrolled voters
- ▶ delivering a social media information campaign
- ▶ placing advertisements in local print media, and
- ▶ distributing media releases and participating in radio interviews.

The personalised voter information cards sent to Callide voters had information about voting and included a QR code that when brought to a polling place, could be scanned to mark voters off the roll more quickly.

Around 13,100 voters had included their email address on the electoral roll, so a voter information card was also sent to them electronically. This contact was followed up with a reminder email sent on Thursday, 16 June 2022 to people who had not yet voted.

The ECQ's social media information campaign comprised of 13 Facebook posts and nine Twitter posts at various stages of the election period.

Election information advertising was published in local newspapers *Burnett Today*, *Gladstone Today*, *Toowoomba Chronicle* and *CQ Today*. This advertisement provided election dates and times, polling booth opening hours, COVID-safe voting initiatives, postal voting information and receipt deadline, and reminders that voting is compulsory.

ECQ representatives, including the Electoral Commissioner, gave four interviews to 4RO and ABC Radio. They provided the public updates about election dates, times, and polling booth information.

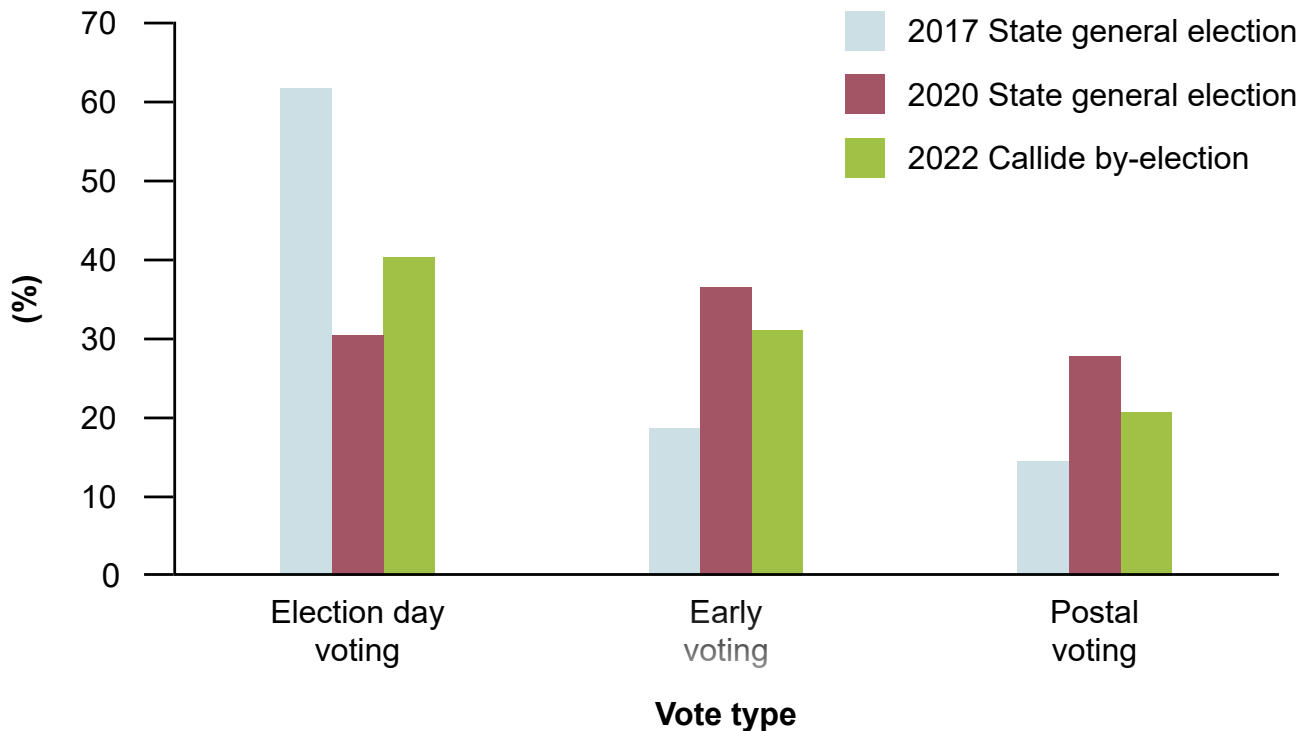
Seven media releases were disseminated to journalists across Queensland from Thursday, 26 May 2022 through to Thursday, 23 June 2022, when the ECQ declared the successful candidate. Key information about the election delivery process, relevant facts and data, and a map of the electorate, were also sent to journalists before the start of early voting.

Analysis of voter behaviour

The COVID-19 pandemic continues to have impacts on the delivery of elections. The ECQ has implemented various strategies to protect public health and safety, and there have been significant shifts in the voting channels used by voters, compared to elections prior to the pandemic. Recent trends towards early voting have consolidated longer-term trends changing how voters choose to cast their ballots, away from election day to the early voting period.

The graph below highlights the changes that have occurred in the main voting channels within the Callide electorate over the last three State elections.

Callide voter behaviour over time



During the most recent State election in Callide prior to the pandemic, the 2017 State general election, election day voting was the primary method of voting (around 60 per cent). This was followed by early voting (around 20 per cent) and postal voting (15 per cent). The remainder was made up of telephone voting, electoral visitor voting, declared institution voting and in-person declaration voting.

At the 2020 State general election, in response to the COVID-19 pandemic, the ECQ expanded early voting and postal voting services to reduce the number of people at a polling place at any one time.

As a result, the largest proportion of votes cast in Callide was via early voting at 38 per cent and the proportion of postal votes almost doubled from 2017 to 29 per cent. The rate of election day voting in Callide during the 2020 State general election declined by almost half to 32 per cent.

A key question for election management bodies will be whether these changes will endure in future elections or are limited to the duration of the pandemic. While still operating in a COVID-19 context, the Callide by-election suggests that election day voting may increase in the future, albeit at lower levels than at previous elections, with the proportion of votes cast on election day rising to 42 per cent.

At the by-election, there were small declines in early voting (down to 35 per cent) and postal voting (down to 22 per cent) from 2020, however rates were still higher compared to 2017. It should be noted that telephone voting has increased (from negligible levels in 2017 to over three per cent in the by-election) but this is potentially driven by voters being required to isolate after testing positive for COVID-19 during the election period.

As the impacts of the pandemic decline, the ECQ will continue monitoring voter behaviour at other elections to determine the legacy COVID-19 will have on future election delivery.

Election results

Following the close of polling at 6.00pm on election day, Saturday, 18 June 2022, the preliminary count was undertaken. This count provides voters, candidates, parties and other election participants an early indication of the final results.

The official first preference count commenced on Sunday, 19 June 2022. Following completion of the count of all available ballots, Mr Bryson Head of the Liberal National Party received enough first preference votes to be declared the successful candidate before the deadline for the return of postal ballots on Tuesday, 28 June 2022.

On Thursday, 23 June 2022, the Electoral Commissioner returned the completed writ to the Speaker of the Legislative Assembly of Queensland and published the name of the elected candidate in the Queensland Government Gazette. Mr Head was sworn in as the Member for Callide in the Queensland Parliament on 24 June 2022.

Although the result had been declared, the ECQ completed an official distribution of preferences count following the deadline for the return of postal votes, to finalise the results. Mr Head ultimately received 50.33 per cent of first preference votes and, after the distribution of preferences, received 71.73 per cent of the total vote.

The first preference count and distribution of preferences for the Callide State by-election is in **Appendix C**.

Compliance services

The ECQ carried out compliance and enforcement actions for the by-election, including ensuring electoral participants were adhering to funding and disclosure obligations.

The ECQ also undertakes enforcement action against those enrolled who have failed to vote. These actions promote transparency in the electoral system and incentivise greater electoral participation.

Electoral participant compliance

The ECQ works closely with candidates and registered political parties, as well as their staff and volunteers, to promote awareness and support compliance with legislative obligations. The ECQ produces a range of resources for these electoral participants including handbooks, fact sheets and guides to explain endorsement, nomination and disclosure requirements.

During the by-election, the ECQ dealt with one notification of potential non-compliance relating to signage issues. The subject of the notification rectified the issue once contacted by the ECQ and no further action was required to be taken.

All registered political parties, candidates and relevant associated entities submitted their election summary returns by the due date of 4 October 2022.

Voter compliance

Voting is compulsory in Queensland, and it is an offence for an elector to fail to cast a vote without a valid and sufficient reason. Following the by-election, the ECQ commenced a non-voter compliance program to identify and communicate with individuals who appeared to have failed to vote, aimed at reinforcing the need to vote and encouraging future compliance.

Notices have been sent to the around 7,100 individuals who appear to have failed to vote at the by-election. The notice provides several opportunities for recipients to contact the ECQ and provide an explanation for not voting, or to advise the ECQ they did vote, prompting ECQ to investigate further. The ECQ can close the matter and take no further action if the elector provides a valid and sufficient excuse or advice of their vote. However, if the elector fails to respond to the ECQ's correspondence, or if the excuse is not deemed to be valid and sufficient, further action may be taken, including issuing a penalty infringement notice.

The number of times an elector has failed to vote in previous elections may also be a factor in determining the compliance response.

Review of informal voting

At State elections in Queensland, voters must elect their representatives using the full preferential voting system. Therefore, to cast a formal vote, voters must number every box on the ballot paper in their order of preference. In accordance with section 123 of the *Electoral Act 1992*, if 'a ballot paper does not have effect to indicate a vote, it is an informal ballot paper' and will not contribute towards the election result. At most elections a portion of the votes cast will be informal.

The ECQ conducted an analysis of informal ballot papers for the by-election to identify whether voters intentionally or unintentionally voted informally. This was achieved through a process of categorisation of each informal ballot paper. While this exercise is unable to determine voters' intentions, this review provides insight into informal voting patterns and informs future strategies aimed at increasing formal voting.

To provide a point of comparison, the ECQ also categorised the informal ballot papers from the Callide electorate in the 2020 State general election.

Overview

The rate of informal voting decreased from the 2.96 per cent rate achieved during the October 2020 State general election, to a 1.89 per cent informality rate at the Callide by-election, equating to 500 informal ballots.

The rates of assumed intentional and assumed unintentional informality in the Callide electorate also remained stable over the two elections. Previous research undertaken by the ECQ¹, suggests the majority of informal votes are assumed to be intentional, with this trend continuing in the Callide by-election.

Methodology

Informal ballot papers for each electorate were reviewed at the polling booth level and organised into categories that were classed as either 'assumed unintentional' or 'assumed intentional'. The categories and their definitions are listed in the table below.

Categories and definitions of informality	
Assumed intentional	
Blank	Ballot papers that have been left blank
COVID-19 commentary	Ballot papers with comments, questions or other marks that specifically reference the pandemic
Writing, marks, scribbles, or pictures	Ballot papers with writing, markings, scribbles or pictures
Other - intentional	Any other ballot papers deemed to be intentionally informal

¹ See informal ballot paper review in [2020 State general election: Report on the Election](#).

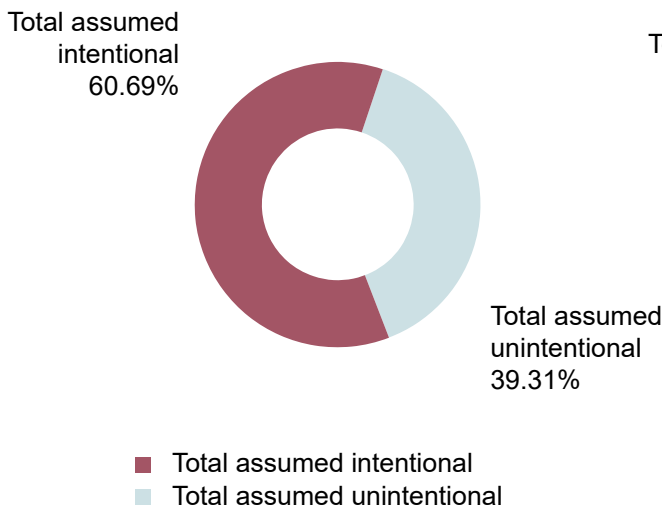
Assumed unintentional	
Optional preferential voting	Incomplete ballot papers where the elector allocated preferences for one or some of the candidates, but not all as required for full preferential voting elections
Non-sequential numbering	Ballot papers with repeated or skipped numbers
Ticks and crosses	Ballot papers marked with a cross or tick next to the candidates' names instead of numbering
Voter identifiable	Ballot papers that identify the elector
Other - unintentional	Any other ballots deemed to be unintentionally informal

Review results

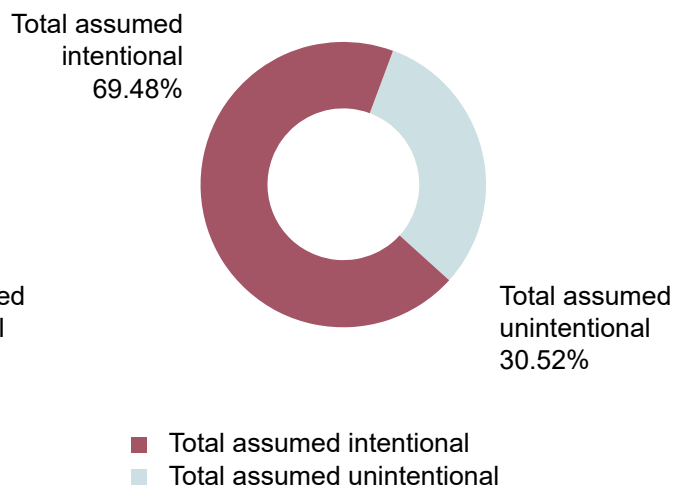
The results of the review found that, for the Callide State by-election, assumed intentional informal voting accounted for 60.69 per cent of informal ballot papers, while 39.31 per cent were assumed to be unintentionally informal.

The figures for the Callide electorate changed from the 2020 State general election where intentional informal voting accounted for 69.48 per cent of informal ballot papers and unintentional informal voting accounted for 30.52 per cent.

2022 Callide State by-election



2020 State general election - Callide electorate



The categorisation of informal ballot papers from both elections revealed the following information:

- ▶ The 'writing, marks, scribbles or pictures' category, captured the most assumed intentional informal votes, making up approximately 39 per cent of all informal votes cast in the Callide by-election declining from 50 per cent at the 2020 election. 'Blank' also captured a large proportion of assumed intentional informal votes, representing around 21 per cent at the by-election compared to 18 per cent at the 2020 general election.
- ▶ Of the assumed unintentional informal categories, the non-sequential numbering category accounted for approximately 16 per cent of informal ballots almost doubling from the approximately 9 per cent observed at the 2020 State general election.

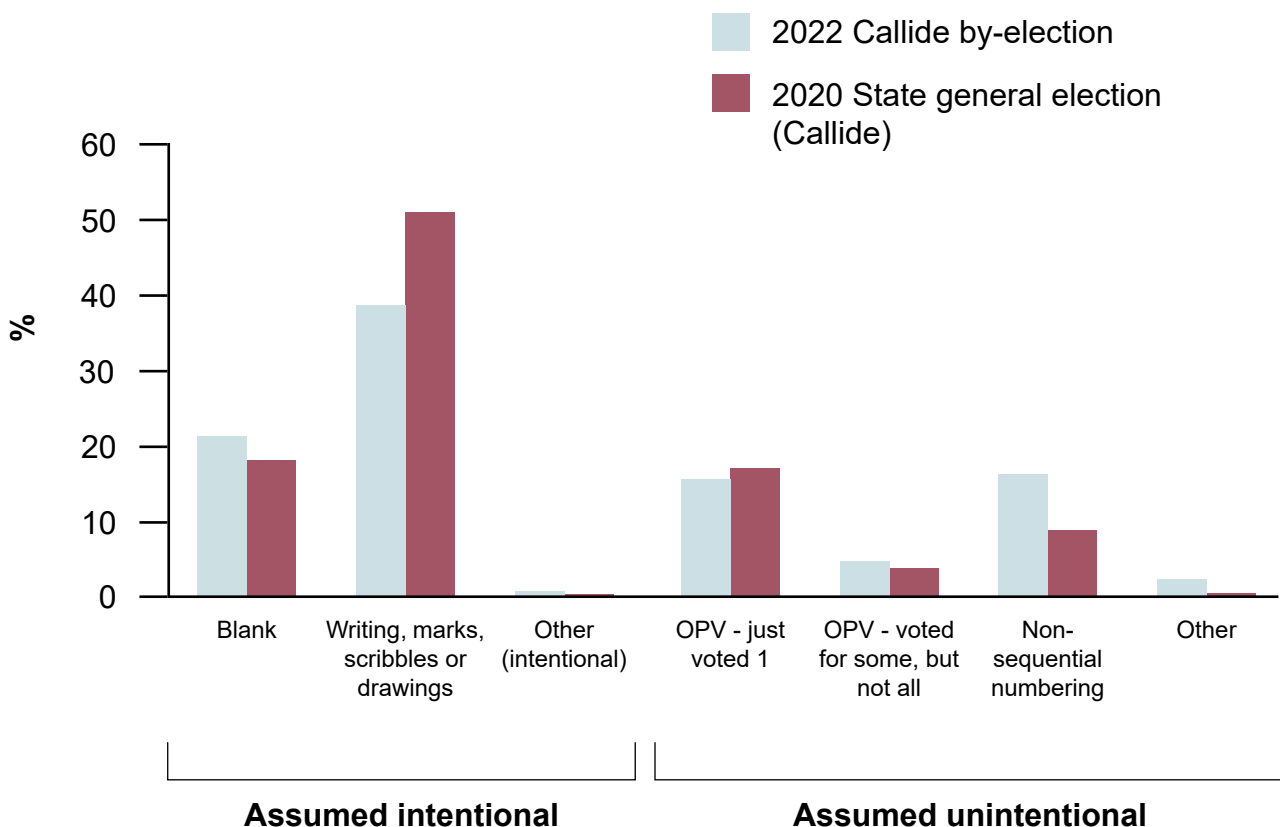
Interpretation

Callide is an electorate categorised as being within a 'low' informality range (between zero per cent and three per cent) and the reductions in the rate of informality between elections is a positive outcome.

The composition of informality in Callide is similar other Queensland electorates with low informality rates. The data from the informal ballot paper review for the 2020 State general election suggested that approximately two thirds (65 per cent) of informal ballots from electorates in the low informality range were assumed to be intentional.

In the Callide electorate, the data was consistent with this trend, with the majority of the informal ballots assumed to be intentional. However, the rate of assumed intentional informal ballots has declined between the 2020 State general election and the 2022 Callide by-election (approximately 61 per cent at the by-election and 69 per cent at the general election).

Callide electorate - Comparison of informal voting results



This shift was driven by declines in the proportion of ballots with writing, marks, scribbles or drawings. In the 2022 Callide by-election, ballot papers with writing, marks, scribbles or pictures made up 38.71 per cent of the total informal ballots. However, this has declined significantly from the 2020 State general election where this category made up over 50 per cent of all informal ballot papers in the Callide electorate.

The corresponding increase in unintentional informal voting was driven by increases in the non-sequential numbering category. Other categories of unintentional informal voting, such as voting using the optional preferential voting system (either just voted one or some but not all) remained at similar proportions.

At the 2022 Callide by-election, approximately 16 per cent of informal ballot papers were incorrectly numbered, compared to almost 9 per cent at the 2020 State general election. This is consistent with a trend identified in the 2020 State general election, where 'non-sequential numbering' increased when there were six or more candidates contesting an election. Six candidates contested the 2022 Callide by-election, whereas five candidates contested the 2020 state general election in the Callide electorate. More research is required to determine why a threshold of six candidates exists for increasing rates of non-sequential numbering.

It should be noted that the changes in the composition of informal ballot papers in Callide between 2020 and 2022 may also be driven by the decline in voter turnout. It is a possibility that less engaged voters who are unlikely to participate in a by-election will cast intentionally informal ballots at a general election, leading to higher informality rates as general elections. However more research would be required to confirm such a hypothesis.

Conclusion

Informality in the Callide electorate declined substantially between the 2020 State general election and the 2022 Callide by-election, from 2.96 per cent to 1.89 per cent.

While increases have been observed in unintentional informality compared to the 2020 State general election, the results of the review indicate that most informality still appears to be intentional. The assumed intentional informality rate at the by-election accounted for 60.69 per cent of informal ballot papers, compared to 69.48 per cent at the 2020 State general election.

The increase in unintentional informality to 39.31 per cent at the by-election, from 30.52 per cent at the 2020 State general election, appears to be attributable to a significant increase in non-sequential numbering, which may correlate to the number of candidates on the ballot paper.

The ECQ will consider the findings of this and other informality reviews to identify opportunities to improve voter understanding of formal voting at future elections with a focus on reducing unintentional informality.



Appendices

Appendix A – By-election writs and results notices.....	19
Writ.....	19
Gazette notice.....	21
Appendix B – Notices	22
Electronically assisted (telephone) voting notice.....	22
Declared mobile polling list.....	23
Appendix C – First preference count and distribution of preferences.....	24
First preference count by booth.....	24
Full distribution of preferences by booth.....	25
Summary of distribution of preferences.....	26

Appendix A – By-election writs and results notices

Writ

STATE OF QUEENSLAND

Electoral Act 1992

Writ for Election

*Elizabeth the Second, by the Grace of God, Queen of Australia and
Her other Realms and Territories, Head of the Commonwealth*

To the Electoral Commission of Queensland

Pursuant to s 83(2) of the *Electoral Act 1992* I, the Honourable Curtis Pitt MP, Speaker of the Legislative Assembly

- (i) direct that you proceed according to the law to an election of a Member of the Legislative Assembly of Queensland for the Electoral District of Callide;
- (ii) appoint –

Monday, 23 May 2022 to be the day of issue of this Writ;

Friday, 27 May 2022 to be the cut-off day for electoral rolls for the election;

Tuesday, 31 May 2022 to be the cut-off day for the nomination of candidates for the election;

Saturday, 18 June 2022 to be the polling day; and

Wednesday, 20 July 2022 for the return of this Writ.

Signed by the Honourable Curtis Pitt MP, Speaker of the Legislative Assembly of Queensland at Brisbane
23 May 2022.



Speaker of the Legislative Assembly



IT IS HEREBY CERTIFIED THAT:

Bryson Warwick HEAD..... was duly elected a Member of the Legislative Assembly of Queensland for the Electoral District of Callide by virtue of the within Writ.



Electoral Commission of Queensland

[193]



Queensland Government Gazette

EXTRAORDINARY

PUBLISHED BY AUTHORITY

ISSN 0155-9370

VOL. 390]

THURSDAY 23 JUNE 2022

[No. 40

Elected Candidate Notice **CALLIDE STATE BY-ELECTION** **SATURDAY, 18 JUNE 2022**



A by-election for the Queensland electorate of Callide was held on Saturday, 18 June 2022.

In accordance with section 132(2)(c) of the *Electoral Act 1992*, this notice advises that the following candidate has been duly elected as a Member of the Legislative Assembly:

Electoral district	Elected candidate
Callide	Bryson Warwick HEAD

In accordance with section 132(2)(a) of the *Electoral Act*, the successful candidate's name has been written on the writ, which in accordance with section 132(2)(b) of the *Electoral Act*, was returned to the Speaker of the Legislative Assembly of Queensland on 23 June 2022.

Pat Vidgen PSM
Electoral Commissioner of Queensland

© The State of Queensland 2022
Copyright protects this publication. Except for purposes permitted by the Copyright Act, reproduction by whatever means is prohibited without prior written permission. Inquiries should be addressed to:
Gazette Advertising, GPO Box 2457, Brisbane QLD 4001.

BRISBANE
23 June 2022

Appendix B – Notices

Electronically assisted (telephone) voting notice

Electronically Assisted (Telephone) Voting Notice CALLIDE STATE BY-ELECTION SATURDAY, 18 JUNE 2022



The Callide State by-election will be held on Saturday, 18 June 2022. **Voting is compulsory.**

This notice identifies the classes of electors who, under section 121A of the *Electoral Act 1992* and 4AA of the *Electoral Regulation 2013*, may make an electronically assisted vote (telephone vote) at the 2022 Callide State by-election.

Electors who are eligible to use telephone voting for this by-election include:

- electors who cannot vote without assistance due to an impairment or an insufficient level of literacy
- electors who cannot vote at a polling booth because of an impairment
 - this includes electors who, during the by-election period, cannot attend a polling place as they have been diagnosed with COVID-19 and must isolate under a direction issued under section 362B of the *Public Health Act 2005*
- special postal voters who are not detained in lawful custody
- distance voters whose enrolled address is more than 20km from a polling booth, and
- electors who cannot vote at a polling booth during the voting period for the by-election
 - this includes electors located interstate or overseas.

For information about registering to use the telephone voting service, please see the ECQ website or phone 1300 881 665.

Electoral Commission of Queensland

T: 1300 881 665

E: ecq@ecq.qld.gov.au

W: www.ecq.qld.gov.au/

Declared mobile polling list

Callide State by-election declared mobile polling lists

In accordance with section 99(4) of the Electoral Act 1992, the Electoral Commission of Queensland notifies and declares the following institutions to be mobile polling booths for the 2022 Callide State by-election at the appointed date and time specified below.

ONLY RESIDENTS AND PATIENTS OF THE INSTITUTIONS LISTED BELOW ARE PERMITTED TO VOTE AT THE INSTITUTIONS DURING THE APPOINTED DATE AND TIME.

Institution name	Institution address	Date of mobile polling	Start time	End time	Electorate
Biloela Hospital	2 Hospital Road, Biloela, QLD Australia 4715	Friday, 17 June 2022	9:30:00 AM	11:30:00 AM	Callide

Appendix C – First preference count and distribution of preferences

All results from the Callide by-election can be viewed and downloaded from the ECQ website.

First preference count by booth

Polling Booth	JARRY, Fabrice		GILBARD, Paula		BURLING, Adam		LOHSE, Sharon		HEAD, Bryson		DENDLE, Bronwyn		Formal Votes		Informal Votes		Total Votes
	Votes	%	Votes	%	Votes	%	Votes	%	Votes	%	Votes	%	Votes	%	Votes	%	
Banana	3	2.88%	0	0.00%	8	7.69%	26	25.00%	50	48.08%	17	16.35%	104	99.05%	1	0.95%	105
Baralaba	1	0.85%	1	0.85%	10	8.55%	13	11.11%	78	66.7%	14	11.97%	117	98.32%	2	1.68%	119
Bell	2	0.80%	6	2.40%	8	3.20%	36	14.40%	171	68.40%	27	10.80%	250	99.21%	2	0.79%	252
Biggenden	21	4.34%	4	0.83%	35	7.23%	89	18.39%	236	48.76%	99	20.45%	484	94.90%	26	5.10%	510
Biloela	56	7.24%	10	1.29%	203	26.23%	99	12.79%	215	27.78%	191	24.68%	774	98.35%	13	1.65%	787
Brigalow	0	0.00%	0	0.00%	1	1.69%	10	16.95%	45	76.27%	3	5.08%	59	98.33%	1	1.67%	60
Bullward	12	7.14%	1	0.60%	9	5.36%	20	11.90%	69	41.07%	57	33.93%	168	99.41%	1	0.59%	169
Calloope	108	5.67%	35	1.84%	116	6.09%	300	15.75%	760	39.90%	586	30.76%	1905	96.12%	77	3.88%	1982
Chinchilla	51	6.51%	21	2.68%	56	7.15%	150	19.18%	392	50.06%	113	14.43%	783	97.39%	21	2.61%	804
Chinchilla Early Voting Centre	119	4.82%	30	1.21%	145	5.87%	435	17.60%	1416	57.30%	326	13.19%	2471	98.06%	49	1.94%	2520
Chinchilla North	11	3.61%	3	0.95%	18	5.90%	65	21.31%	156	51.15%	52	17.05%	305	99.03%	3	0.97%	308
Drillham	1	3.03%	0	0.00%	2	6.06%	7	21.21%	22	66.67%	1	3.03%	33	100.00%	0	0.00%	33
Eidsvold	8	4.19%	4	2.09%	8	4.19%	16	8.38%	82	42.93%	73	38.22%	191	96.95%	6	3.05%	197
Gayndah	12	4.92%	4	1.64%	8	3.28%	43	17.62%	126	51.64%	51	20.90%	244	96.83%	8	3.17%	252
Gayndah Early Voting Centre	61	4.93%	25	2.02%	81	6.55%	164	13.26%	721	58.29%	185	14.96%	1237	97.71%	29	2.29%	1266
Gin Gin	60	12.47%	18	3.74%	33	6.86%	112	23.28%	150	31.19%	108	22.45%	481	97.37%	13	2.63%	494
Gin Gin Early Voting Centre	90	5.71%	37	2.35%	133	8.44%	298	18.92%	618	39.24%	399	25.33%	1575	97.28%	44	2.72%	1619
In Person Declaration Votes	8	6.25%	3	2.34%	16	12.50%	33	25.78%	40	31.25%	28	21.88%	128	96.97%	4	3.03%	132
Jambin	1	0.79%	1	0.79%	35	27.56%	11	8.66%	70	55.12%	9	7.09%	127	98.45%	2	1.55%	129
Jandowae	20	4.58%	8	1.83%	19	4.35%	67	15.33%	263	60.18%	60	13.73%	437	98.20%	8	1.80%	445
Jimbour	1	1.28%	2	2.56%	9	11.54%	11	14.10%	53	67.95%	2	2.56%	78	100.00%	0	0.00%	78
Miles	40	6.00%	20	3.00%	47	7.05%	96	14.39%	357	53.52%	107	16.04%	667	97.80%	15	2.20%	682
Mobile Polling	0	0.00%	1	6.25%	0	0.00%	0	0.00%	11	68.75%	4	25.00%	16	94.12%	1	5.88%	17
Monto	14	2.43%	6	1.04%	48	8.33%	85	14.76%	299	51.91%	124	21.53%	576	97.46%	15	2.54%	591
Mount Perry	8	4.73%	2	1.18%	10	5.92%	33	19.53%	85	50.30%	31	18.34%	169	98.83%	2	1.17%	171
Moura	29	4.94%	11	1.87%	50	8.52%	101	17.21%	181	30.83%	215	36.63%	587	97.83%	13	2.17%	600
Mulgildie	1	0.56%	0	0.00%	11	6.21%	12	6.78%	132	74.58%	21	11.86%	177	100.00%	0	0.00%	177
Mundubbera	34	6.39%	5	0.94%	35	6.58%	76	14.29%	294	55.26%	88	16.54%	532	98.70%	7	1.30%	539
Postal Declaration Votes	202	3.56%	89	1.57%	461	8.12%	624	10.99%	3380	59.51%	924	16.27%	5680	99.14%	49	0.86%	5729
Returning Officer Callide	117	3.74%	35	1.12%	722	23.10%	275	8.80%	1268	40.56%	709	22.68%	3126	98.52%	47	1.48%	3173
Taroom	18	4.75%	3	0.79%	16	4.22%	69	18.21%	249	65.70%	24	6.33%	379	97.68%	9	2.32%	388
Telephone Voting	8	3.57%	3	1.34%	20	8.93%	43	19.20%	108	48.21%	42	18.75%	224	100.00%	0	0.00%	224
Telephone Voting - Early Voting	33	5.39%	19	3.10%	47	7.68%	80	13.07%	283	46.24%	150	24.51%	612	100.00%	0	0.00%	612
Thangool	10	5.85%	2	1.17%	49	28.65%	15	8.77%	77	45.03%	18	10.53%	171	96.07%	7	3.93%	178
Theodore	17	5.18%	3	0.91%	13	3.96%	62	18.90%	187	57.01%	46	14.02%	328	97.33%	9	2.67%	337
Uboob	3	2.44%	1	0.81%	2	1.63%	20	16.26%	70	56.91%	27	21.95%	123	94.62%	7	5.38%	130
Wallaville	26	14.94%	9	5.17%	4	2.30%	39	22.41%	64	36.78%	32	18.39%	174	98.31%	3	1.69%	177
Wandoan	12	5.61%	1	0.47%	14	6.54%	31	14.49%	136	63.55%	20	9.35%	214	97.72%	5	2.28%	219
Warra	2	3.13%	0	0.00%	2	3.13%	12	18.75%	43	67.19%	5	7.81%	64	100.00%	0	0.00%	64
Wowan	3	1.69%	1	0.56%	13	7.34%	26	14.68%	102	57.63%	32	18.08%	177	99.44%	1	0.56%	178
Totals:	1223	4.71%	424	1.63%	2517	9.70%	3704	14.28%	13059	50.33%	5020	19.35%	25947	98.11%	500	1.89%	26447

Full distribution of preferences by booth

Polling Booth	HEAD, Bryson		DENDLE, Bronwyn		Total Votes
	Votes	%	Votes	%	
Banana	79	75.96%	25	24.04%	104
Baralaba	96	82.05%	21	17.95%	117
Bell	208	83.20%	42	16.80%	250
Biggenden	349	72.11%	135	27.89%	484
Biloela	452	58.40%	322	41.60%	774
Brigalow	55	93.22%	4	6.78%	59
Bullyard	94	55.95%	74	44.05%	168
Calliope	1138	59.74%	767	40.26%	1905
Chinchilla	580	74.07%	203	25.93%	783
Chinchilla Early Voting Centre	1978	80.05%	493	19.95%	2471
Chinchilla North	234	76.72%	71	23.28%	305
Drillham	30	90.91%	3	9.09%	33
Eidsvold	111	58.12%	80	41.88%	191
Gayndah	174	71.31%	70	28.69%	244
Gayndah Early Voting Centre	958	77.45%	279	22.55%	1237
Gin Gin	290	60.29%	191	39.71%	481
Gin Gin Early Voting Centre	974	61.84%	601	38.16%	1575
In Person Declaration Votes	75	58.59%	53	41.41%	128
Jambin	109	85.83%	18	14.17%	127
Jandowae	355	81.24%	82	18.76%	437
Jimbour	71	91.03%	7	8.97%	78
Miles	503	75.41%	164	24.59%	667
Mobile Polling	12	75.00%	4	25.00%	16
Monto	422	73.26%	154	26.74%	576
Mount Perry	123	72.78%	46	27.22%	169
Moura	309	52.64%	278	47.36%	587
Mulgildie	153	86.44%	24	13.56%	177
Mundubbera	403	75.75%	129	24.25%	532
Postal Declaration Votes	4390	77.29%	1290	22.71%	5680
Returning Officer Callide	2041	65.29%	1085	34.71%	3126
Taroom	334	88.13%	45	11.87%	379
Telephone Voting	160	71.43%	64	28.57%	224
Telephone Voting - Early Voting	393	64.22%	219	35.78%	612
Thangool	131	76.61%	40	23.39%	171
Theodore	253	77.13%	75	22.87%	328
Ubobo	86	69.92%	37	30.08%	123
Wallaville	121	69.54%	53	30.46%	174
Wandoan	180	84.11%	34	15.89%	214
Warra	51	79.69%	13	20.31%	64
Wowan	136	76.84%	41	23.16%	177
Totals:	18611	71.73%	7336	28.27%	25947

Summary of distribution of preferences

Preference Distribution	JARRY, Fabrice		BURLING, Adam		HEAD, Bryson		Total Formal Votes
First Preference	1223	424	2517	3704	13059	5020	25947
GILBARD, Paula excluded	163		57	91	48	65	424
Total	1386		2574	3795	13107	5085	25947
JARRY, Fabrice excluded			449	387	168	382	1386
Total			3023	4182	13275	5467	25947
BURLING, Adam excluded				1734	792	497	3023
Total				5916	14067	5964	25947
LOHSE, Sharon excluded					4544	1372	5916
Total					18611	7336	25947



**Electoral
Commission**
QUEENSLAND

Post: GPO Box 1393
BRISBANE QLD 4001

Telephone: 1300 881 665

Email: ecq@ecq.qld.gov.au