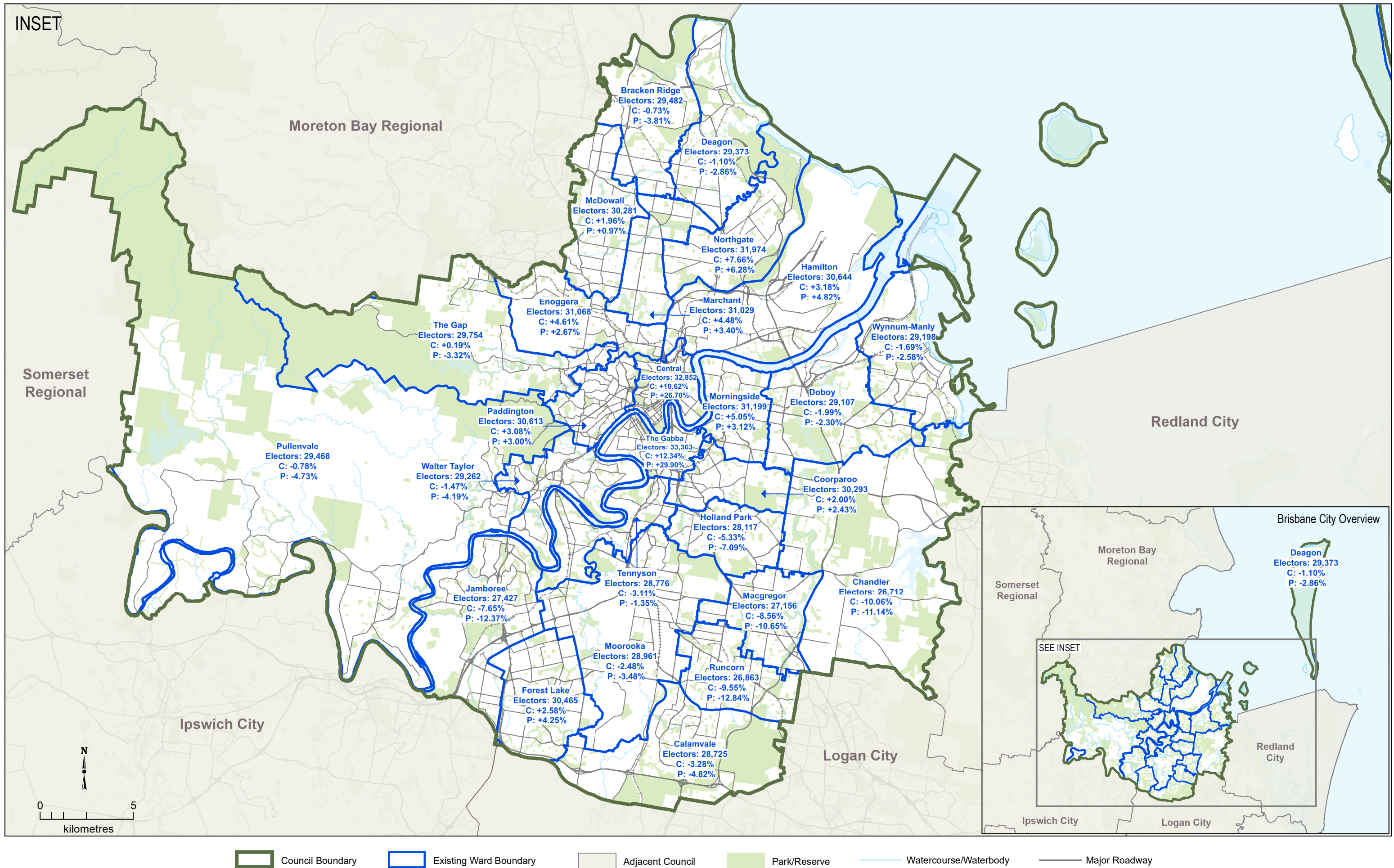


BRISBANE CITY

Existing Electoral Wards



This product was created using datasets from various authoritative sources and is intended as a guide only to display current ward boundaries. The digital GIS data is available FREE to download from Queensland Spatial Catalogue, or Qspatial, at <http://qldspatial.information.qld.gov.au>. Elector deviation is referenced as C (Current) and P (Projected). © The State of Queensland - 2019 (Department of Natural Resources, Mines and Energy), © Electoral Commission of Queensland 2019, Creative Commons (CC BY)