

# **APPENDIX E**

## **Comments on the Proposal Notice & Public Submissions**

## LOCAL GOVERNMENT CHANGE COMMISSION

### Divisional Boundary Review of Scenic Rim Regional Council

The Scenic Rim Regional Council advised its electoral divisions no longer meet the voter enrolment requirements set down in the *Local Government Act 2009*. As a result, the Minister for Local Government has referred the matter to the Change Commission for independent assessment.

The Change Commission has proposed changes to the Council's internal boundaries (divisions) following a period of public suggestions.

#### **INVITATION FOR COMMENTS ON THE PROPOSAL**

Comments on the Change Commission's proposal will be accepted until 5pm on 8 July 2019. Late submissions cannot be considered.

To view the proposal and make a submission, please see the Electoral Commission of Queensland's website: <https://ecq.qld.gov.au/lgr/scenicrim> or phone 1300 881 665.

When making a comment, please remember each division must have relatively the same number of voters (quota) to ensure each person's vote has the same value. The quota for the Scenic Rim Regional Council is 4,887 with a lower limit of 4,398 (-10%) and an upper limit of 5,376 (+10%).

#### **Comments can be lodged through:**

**- Online Form (*preferred*)**

<https://ecq.qld.gov.au/lgr/scenicrim>

**- Email**

[LGCCsubmissions@ecq.qld.gov.au](mailto:LGCCsubmissions@ecq.qld.gov.au)

**- Personal Delivery** (Mon - Fri 9.00am - 5.00pm)

Electoral Commission of Queensland  
Level 20, 1 Eagle Street, BRISBANE QLD 4000

**- Post**

Local Government Change Commission  
GPO Box 1393, BRISBANE QLD 4001

**Submissions will be made available for public inspection.** To discuss any privacy concerns, please phone 1300 881 665.

Pat Vidgen PSM

**Electoral Commissioner**

**List of Public Comments on the Proposal**  
**Divisional Boundary Review of Scenic Rim Regional Council**

<b>Suggestion</b>	<b>Name / Organisation</b>
<b>1</b>	Cheryl
<b>2</b>	Margaret MacDonald
<b>3</b>	Jon Gibbons, Scenic Rim Regional Council
<b>4</b>	Amanda Hay, Tamborine Mountain Progress Association Inc

**Sent:** Saturday, 22 June 2019 1:49 PM  
**To:** LG CC Submissions  
**Subject:** (79144) Scenic Rim Regional Local Government Area - Cheryl

Online submission for **Scenic Rim Regional Local Government Area** from **Cheryl**

---

#### **Submission Details**

**Name:** Cheryl

**Submission Text:** I don't understand the logic of excluding Bateke Rd, Wilson Rd, Benowa Rd Tamborine Mountain from Division 1 and putting them in Division 3. All other roads on Tamborine Mountain are included in Division 1. Division 3 issues are different from Division 1 issues. The boundary between Divisions 1 and 3 should be moved so that all roads on Tamborine Mountain are included within the same division.

**File Upload:** No file uploaded ()

---

**Sent:** Monday, 8 July 2019 5:59 AM  
**To:** LG CC Submissions  
**Subject:** (4442) Scenic Rim Regional Local Government Area - Margaret MacDonald

Online submission for **Scenic Rim Regional Local Government Area** from **Margaret MacDonald**

---

#### **Submission Details**

**Name:** Margaret MacDonald

**Submission Text :** Tamborine Mountain is now losing its second councillor. As it is we are outvoted on a lot of Mountain issues. This new division will make it even more difficult for us. Also, the southern end of Mount Tamborine is now lumped in with Canungra, etc - they will be completely forgotten. Why can't they remain with the rest of Tamborine Mountain

**File Upload:** No file uploaded ()

---

Phone: [REDACTED]  
File Ref: [REDACTED]



8 July 2019

Mr Pat Vidgen PSM  
Electoral Commissioner of Queensland  
GPO Box 1393  
Brisbane QLD 4001

Sent by email only [LGCCsubmissions@ecq.qld.gov.au](mailto:LGCCsubmissions@ecq.qld.gov.au)

Dear Commissioner

## **REVIEW OF DIVISIONS OF SCENIC RIM REGIONAL COUNCIL**

I refer to the Electoral Commission of Queensland's invitation for comments on the 2019 Proposed Determination for Scenic Rim Regional Council. Firstly, I would like to point out the relatively short timeframe allocated to review and make recommendations accordingly.

That said, Council notes that the recommendations are significantly different to those contained in Council's submission. Council has a number of substantial concerns in relation to the proposed determination, including:

1. Community connectivity, e.g. Aratula being split between Divisions 5 and 6;
2. The number and size of amendments having the potential to cause community confusion; and
3. The need for the ECQ to clearly communicate all changes to affected communities.

Council again puts forward its proposal as detailed below. I advise that Council recommends:

- a. The movement of the boundary between divisions 2 & 4, so that SA1 3130519 is fully within Division 4 (transfer of 246 electors). See Attachment 1. Currently SA1 3130519 is partially in both divisions, with the separation being along the Mount Lindsay Highway.
- b. The movement of the boundary between divisions 3 & 5, so that:
  - I. SA1 3130529 is fully within Division 5 (transfer of 61 electors) See Attachment 2. Currently SA1 3130529 is partially in both divisions, with the separation being along the Mount Lindsay Highway; and
  - II. SA1 3130525 is within Division 5 (transfer of 134 electors). See Attachment 2.

Division	Adjacent Divisions	Electors Reasonable proportion 4,383 - 5,357	Current % Variance from Mean 4870	Options Movement	Outcome % Variance from Mean 4870	Revised Electors Reasonable proportion 4,383 - 5,357
1	2 & 3	4,791	- 1.6%		-1.6%	4,791
2	1, 3 & 4	5,500	+ 12.9%		+7.9%	5,254
3	1, 2 & 4	5,031	+ 3.3%		-0.7%	4,836
4	2, 3, 5 & 6	4,659	- 4.3%		+7.1%	4,905
5	4, 3 & 6	4,448	- 8.7%		-4.7%	4,643
6	4 & 5	4,788	- 1.7%		-1.7%	4,788

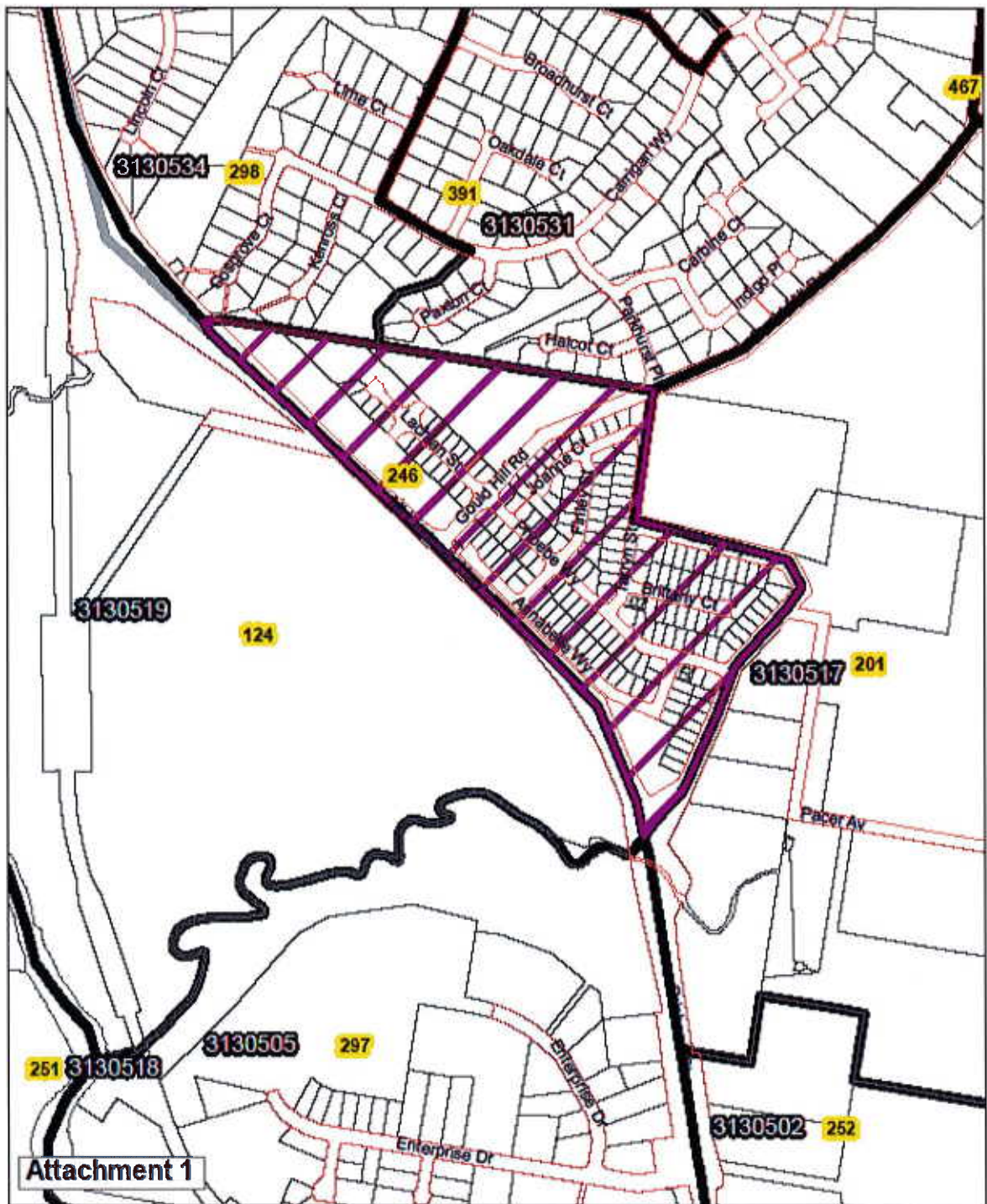
Should the Commission bring forward changes that do not reflect the Council's recommended position, Council has an expectation that the commission will conduct a thorough community consultation process to ensure that the community are fully informed of the outcomes of the boundary review.

Should you require further clarification or wish to discuss, please contact me on [REDACTED].

Yours faithfully

[REDACTED]

Jon Gibbons  
CHIEF EXECUTIVE OFFICER



**Scenic Rim Regional Council**

**Recommendation for Alterations  
to Electoral Divisional Boundaries  
Division 2 and Division 4**

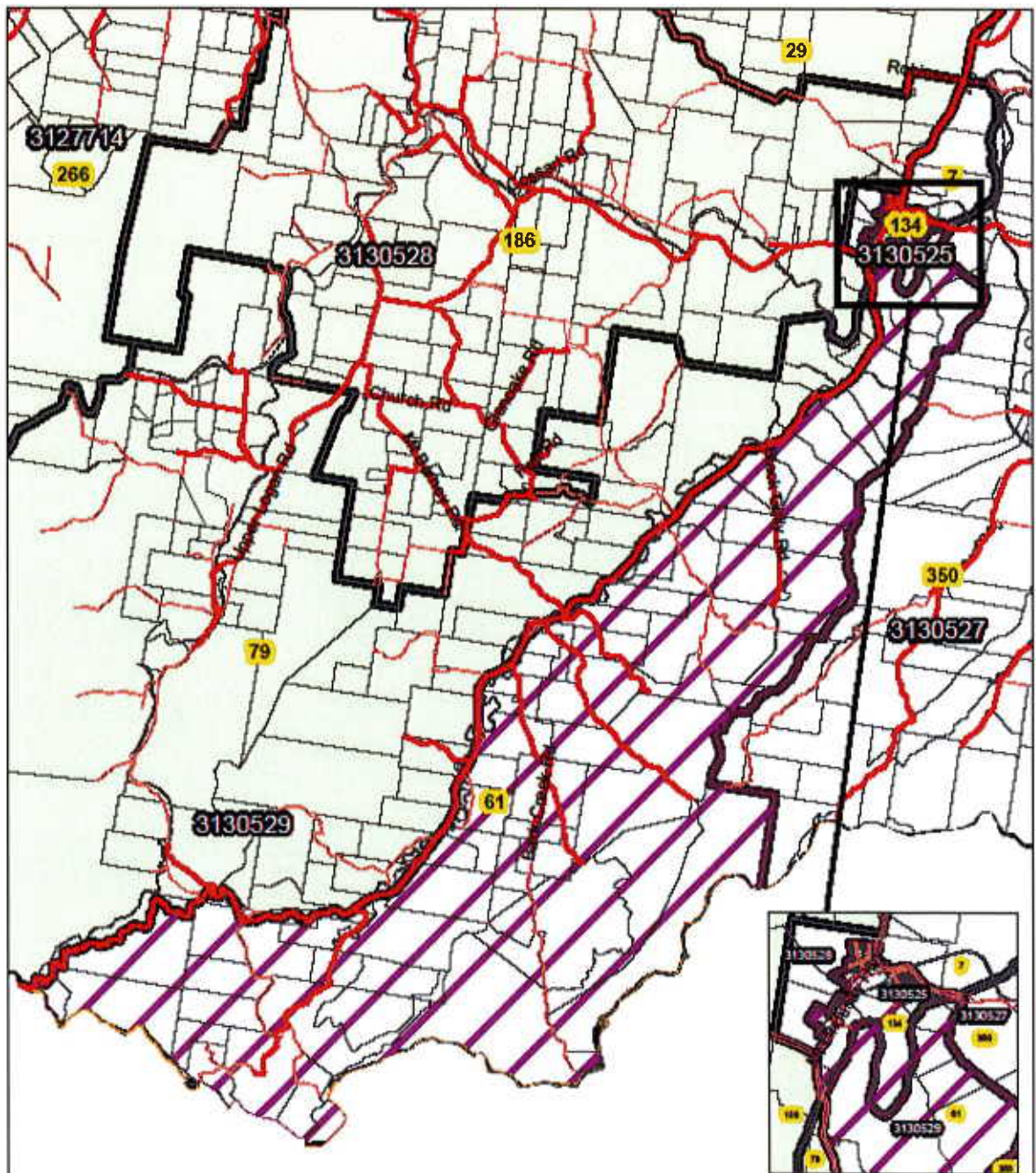
**LEGEND**

- Division 4
- Division 2
- Proposed transfer to Div 4
- SA1 Boundaries
- SA1 Elector Numbers
- SA1 Number

This map is a representation of the current boundaries of the Scenic Rim Regional Council. It is not a legal document. The boundaries shown on this map are for informational purposes only. The boundaries shown on this map are not to be used for any other purpose. The boundaries shown on this map are not to be used for any other purpose. The boundaries shown on this map are not to be used for any other purpose.

Scenic Rim Regional Council





Insert

## Attachment 2

### Scenic Rim Regional Council Recommendation for Alterations to Electoral Divisional Boundaries Division 3 and Division 5

LEGEND	
	Division 5
	Division 3
	Proposed transfer to Div 5
	SA1 Boundaries
	SA1 Elector Numbers
	SA1 Number

When creating maps at scales of 1:50,000 or smaller, the Department of Infrastructure and Planning (DIP) uses a standard map projection. This projection is based on the Australian National Map Grid (ANMG) and is used for all maps produced by the Department. The map projection used for this map is the Australian National Map Grid (ANMG) projection. The map projection used for this map is the Australian National Map Grid (ANMG) projection. The map projection used for this map is the Australian National Map Grid (ANMG) projection.

When a map is produced at a scale of 1:50,000 or smaller, the map projection used for the map is the Australian National Map Grid (ANMG) projection. The map projection used for this map is the Australian National Map Grid (ANMG) projection. The map projection used for this map is the Australian National Map Grid (ANMG) projection.

Map data and population numbers supplied by Statistical Classification Queensland. Data from census year 2016. Population figures of 2016 State.



---

**From:** Trevor Green  
**Sent:** Tuesday, 30 July 2019 4:15 PM  
**To:** LG Boundaries  
**Cc:** Elise Arklay  
**Subject:** FW: Scenic Rim Regional Council Divisional Boundary Review

Katherine Bail  
Assistant Secretary  
Local Government Change Commission

Good afternoon Katherine

I refer to your email below and advise that Council appreciates the opportunity to provide further clarification. Council met to discuss the contents of your email on the 23 July 2019 and I have been asked to provide the below advice.

Council's response of 8 July 2019 centred on only making the three SA1 changes as detailed in Council's original submission. This original response is Council's preferred position on the boundary review and was based on the principles of simplicity and clarity, to deliver a suitable and understandable outcome for the Scenic Rim community. In light of the ECQ's intent to make a number of further changes, Council made comment in the context of these changes, which related to community connectivity, etc. These potential changes were identified as future outcomes as our region develops. Council accepts that any further changes at this time, (as per below) would add more complexity to an already complicated matter. As such, at this time Council does not recommend any further changes above the ECQ's proposal.

For future reviews Council provides the following advice:

1. As Division 4 contains a large amount of proposed development areas, this Division is expected to have considerable future population growth. To complicate this, SA1 3130519's close proximity to the Beaudesert township means that this community mostly associates with Division 4.
2. The Aratula situation was provided as an example of issues of loss of connectivity. This could be part of a future review.

With the amount of proposed changes for 2020, Council again reminds the ECQ of the importance of discharging their responsibility by providing appropriate advice to those communities affected by the changes.

Kind Regards,

**Trevor Green**  
Senior Governance Officer  
Governance  
Scenic Rim Regional Council



Follow Council on social media



---

**From:** LG Boundaries <[LGBoundaries@ecq.qld.gov.au](mailto:LGBoundaries@ecq.qld.gov.au)>  
**Sent:** Wednesday, 17 July 2019 1:47 PM  
**To:** Trevor Green  
**Cc:** Elise Arklay  
**Subject:** Scenic Rim Regional Council Divisional Boundary Review

Good afternoon Trevor,

The Change Commission met on Monday, 15 July to discuss the Scenic Rim divisional boundary review. After reviewing the comments on the proposal, the Change Commission would like to clarify some of the suggestions included in the Council's submission.

Can you please expand upon the Council's suggestion to include SA1 3130519 in Division 4. The Change Commission's proposal maintained the status quo of using the Mount Lindesay Highway as a strong and discernible boundary between these divisions. However, if Council has any information (i.e. about developments / community interests) and can justify why an alternative boundary should be used in this area, the Change Commission will take this into consideration.

It was also noted that Council raised an additional concern that was not flagged during the suggestions period, regarding the locality of Aratula being split between Divisions 5 and 6. It's important to note that the existing boundary already splits the Aratula suburb and the proposed boundary simply maintained the status quo. The Change Commission was not aware of this community concern, but will consider amending the boundary to unite Aratula within a single division. If there is any supporting information regarding a change in this area, we would ask that Council please provide it for the Change Commission's consideration.

Please do not hesitate to contact me if you wish to discuss these matters further.

Kind regards,  
Katherine

**Katherine Bail**

Assistant Secretary  
Local Government Change Commission



## TAMBORINE MOUNTAIN PROGRESS ASSOCIATION INC.

*"Protecting the quality of living on Tamborine Mountain"*

**On behalf of the Tamborine Mountain Progress Association Inc (TMPA), I make the following response to the 2019 Proposed Determination re the Scenic Rim Regional Council area divisional boundary review.**

Some confusion has arisen as the proposed determination re Division 1 states (on page 7) under Division 1 that *'Changes to unite as much of the Tamborine Mountain suburb in Division 1 have been made, addressing the community interest issues raised in some of the public suggestions:*

*The Change Commission proposes the following changes. The Division:*

- a. Gains two portions of the Tamborine Mountain suburb from Division 2.'*

The document then states that one of the portions to be transferred is SA1 3124215, however the second portion is not identified. This omission makes it difficult to make a meaningful response to the proposal.

I refer to the TMPA submission originally made. The Change Commission has agreed with the TMPA suggestions made therein re SA1 3124215 ie that that SA1 should be incorporated within Division 1.

In the TMPA submission, it was noted that, ideally, SA1 3124229 (current enrolled voters: 473) should also be incorporated into Division 1, however the current and projected number of enrolled voters in that SA1 would put the quota for Division 1 over the allowable +10% once SA1 3124215 was incorporated into Division 1. SA1 3124229 is the last remaining SA1 physically located mostly on the Mountain plateau which is **not** in Division 1 (under the proposed determination). This creates a physical anomaly which should be rectified.

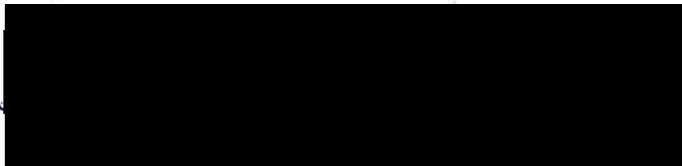
The demographics re SA1 3124229 (as per the 2016 Census results) clearly indicate that the persons resident in SA1 3124229 are far more aligned (re age, family composition, home ownership, and income) with the remainder of the residents/enrolled voters in Division 1 than with those of Division 3, which is the division now proposed in the 2019 proposed determination. The primary landuse/s within Division 3 are not aligned to those within SA1 3124229. 'Connectivity by road' should not be the primary consideration in realigning that SA1 within Division 3.

All residents canvassed who reside within SA1 3124229 are against that SA1 being incorporated into Division 3, a division which has very little in common with Division 1. It is felt that splitting the mountain plateau between Division 1 and Division 3 will exacerbate the representational issues experienced by residents who are not part of Division 1, as a very insignificant percentage of the land area of the proposed Division 3 will be located on Tamborine Mountain.

Residents have suggested that the boundary of SA1 3124229 could be **redrawn** to include only those areas actually on the mountain ie not those on the southern escarpment. It is felt that this realignment would result in a better outcome for the residents of Tamborine Mountain. The proliferation of subdivisions in the immediate area of Canungra, including 'Canungra Rise' (to the immediate south of SA1 3124229) will result in a significant increase in the number of residents in Division 3.

In summary, consensus is that the adult Tamborine Mountain population does not want to be split between Division 1 and Division 3. If there is any way to achieve realignment which ensures that the wishes of the residents of Tamborine Mountain are met, please explore this possibility.

Amanda Hay



For and on behalf of the Management Committee  
Tamborine Mountain Progress Association Inc