

Review of Divisional Boundaries

2019 PROPOSED DETERMINATION
MORETON BAY REGIONAL COUNCIL

Contents

INTRODUCTION	3
Endorsement of proposal	3
THE REVIEW PROCESS	4
Determining the quota	4
EXISTING BOUNDARIES & ENROLMENT	5
Table 1 – Current and Projected Council Quota	5
Table 2 – Current and Projected Enrolment for the Existing Electoral Divisions	5
PUBLIC SUGGESTIONS	6
THE PROPOSED BOUNDARIES	7
Table 3 – Current and Projected Enrolment for the Proposed Electoral Divisions	7
Division 1	7
Division 2	8
Division 3	8
Division 4	9
Division 5	9
Division 6	9
Division 7	9
Division 8	10
Division 9	10
Division 10	11
Division 11	11
Division 12	11
COMMENTS ON THE PROPOSAL INVITED	12
FINALISING THE REVIEW	12
IMPLEMENTATION	12

APPENDIX A Minister’s Referral

APPENDIX B Public Suggestions

APPENDIX C Maps

INTRODUCTION

The *Local Government Act 2009 (Qld)* (the Act) provides for a Local Government Change Commission (Change Commission). The Change Commission is responsible for periodically reviewing the internal boundaries of divided councils so that each division has relatively the same number of enrolled voters. This upholds the key democratic principle of 'one vote, one value', by ensuring each person's vote carries the same weight.

On 1 March 2019, the Minister for Local Government, Minister for Racing and Minister for Multicultural Affairs, The Honourable Stirling Hinchliffe MP referred a divisional boundary review of the Moreton Bay Regional Council (see Appendix A).

The Change Commission for this review consists of:

- Mr Pat Vidgen, Electoral Commissioner;
- Mr Wade Lewis, Casual Commissioner; and
- Mr Peter McGraw, Casual Commissioner.

The casual commissioners were appointed by the Governor in Council on 1 November 2018.

Endorsement of proposal

This report outlines the Change Commission's proposed boundaries for the electoral divisions of the Moreton Bay Regional Council.



Pat Vidgen PSM
Electoral Commissioner



Wade Lewis
Casual Commissioner



Peter McGraw
Casual Commissioner

THE REVIEW PROCESS

The Change Commission must ensure each division of the Council has a reasonable proportion of enrolled voters, herein referred to as 'quota'. Where possible, community interests, public submissions and easy-to-identify boundaries are also considered.

Assessments are conducted in any way the Change Commission deems appropriate, unless the Minister has provided specific directions.

The process for the divisional boundary review of Moreton Bay is as follows:

1. Invite suggestions
2. Publish the Change Commission's proposal
3. Invite comments on the proposal
4. Publish the Change Commission's final determination report
5. Final determination report provided to the Minister for Local Government, for implementation by the Governor in Council
6. New boundaries come into effect at the 2020 Local Government Quadrennial Election

Determining the quota

A quota is determined by dividing the total number of enrolled voters by the number of councillors (other than the mayor), plus or minus 10%. The Change Commission also considers projected enrolment, so the divisions remain in quota for as long as possible.

Current enrolment data has been sourced from Queensland's electoral roll and projected enrolment data from the Queensland Government Statistician's Office of Queensland Treasury. Projections are based on the timing of future local government quadrennial elections.

Enrolment information is organised around 'Statistical Areas Level 1 (SA1)'. SA1s are geographical units used by the Australian Bureau of Statistics (ABS) for the release of census data. According to the ABS most SA1s have a population of between 200 to 800 persons with an average population of approximately 400 people.

Current and projected enrolment data are available for download on the Moreton Bay local government review webpage on the Electoral Commission of Queensland's (ECQ) website.

EXISTING BOUNDARIES & ENROLMENT

The Moreton Bay Regional Council has 298,823 voters and is divided into 12 single-member electoral divisions plus a mayor. Table 1 shows the Council's current enrolment quota as at 31 January 2019 and the quota projected for 31 March 2024.

Table 2 shows the current and projected enrolment for the Council's existing divisional boundaries. As at 31 January 2019, Divisions 4, 9 and 10 were out of quota and in 2024, Divisions 3, 4, 6, 9 and 10 are projected to be out of quota.

Table 1 – Current and Projected Council Quota		
	31 January 2019	31 March 2024
Number of divisions	12	12
Enrolment	298,823	330,025
Quota per division	24,902	27,502
Quota (+10%) per division	27,392	30,252
Quota (-10%) per division	22,412	24,752

Table 2 – Current and Projected Enrolment for the Existing Electoral Divisions				
Division	Enrolment as at 31/01/2019	(%) Deviation from Quota	Projected Enrolment as at 31/03/2024	(%) Deviation from Quota
Division 1	24,228	-2.71	26,241	-4.59
Division 2	25,720	3.29	29,956	8.92
Division 3	27,264	9.49	30,781	11.92
Division 4	31,465	26.36	37,773	37.35
Division 5	24,266	-2.55	26,055	-5.26
Division 6	22,672	-8.95	24,118	-12.3
Division 7	25,820	3.69	27,895	1.43
Division 8	23,952	-3.81	26,318	-4.31
Division 9	21,714	-12.8	22,640	-17.68
Division 10	21,217	-14.8	21,663	-21.23
Division 11	25,258	1.43	27,339	-0.59
Division 12	25,247*	1.39	29,246	6.34
<i>* Note: An anomaly was identified during the modelling process, with three voters reassigned to Division 12. This table has been updated to reflect the additional three electors in Division 12 and the documentation on the ECQ website has been updated.</i>				

PUBLIC SUGGESTIONS

The Change Commission sought public suggestions to assist in developing its proposal. Advertisements were placed in The Courier Mail, a local newspaper and on the ECQ's social media platforms.

Suggestions were invited from 27 April 2019 to 5pm 20 May 2019. Twelve submissions were received and are available to view at Appendix B.

In its review of divisional enrolment on 29 November 2018, the Moreton Bay Regional Council provided recommendations to bring the estimated number of electors in each division within quota for 2020. The Council enclosed maps and several tables identifying the SA1s to be transferred between divisions. The Change Commission agreed with many of the Council's proposed realignments and determined some alternative boundaries in some instances. Maps of the Change Commission's proposed boundaries can be viewed at Appendix C.

The majority of the submissions requested the boundary between Divisions 4 and 7 follow the Bruce Highway in its entirety, transferring Division 4's portion of Kallangur to Division 7. The Change Commission supported this change, as it results in the unification of Kallangur within Division 7, whilst also maintaining the communities of North Lakes, Mango Hill and most of Griffin in Division 4.

A number of submissions requested the northern boundary of Division 8 expand further north to follow the railway line. The Change Commission supported this change as it unites all of Petrie and part of Kurwongbah in Division 8. The southern boundary of Division 8 was also expanded to unite Strathpine within the Division.

One suggestion requested the suburb of Deception Bay be unified so that it is no longer split across multiple divisions. Due to the large number of electors in Deception Bay, it was not possible to place all of Deception Bay within a single division. The proposed boundaries largely contain Deception Bay in Divisions 2 and 5, using Deception Bay Road, Park Road and Old Bay Road as the common boundary. A small portion of Deception Bay that lies south of Saltwater Creek remains in Division 4, as the creek acts as a natural barrier separating these electors from the rest of Deception Bay.

Other suggestions requested minor boundary changes to Divisions 2, 3, 4, 7, 8, 9 and 10. The Change Commission agreed with many of the submissions and has proposed boundaries with these community interests in mind.

THE PROPOSED BOUNDARIES

The proposed boundaries for the Moreton Bay Regional Council are detailed below. They bring each division into quota, and the Change Commission has made a concerted effort to unite suburbs and use clearly discernible boundaries. Projected enrolment information also factored strongly into the Change Commission's deliberations, with the intent being to create boundaries that endure for more than one electoral event.

Table 3 shows the current and projected enrolment for the proposed electoral divisions. Maps of the proposed divisions are in Appendix C and interactive maps are on the ECQ website.

Table 3 – Current and Projected Enrolment for the Proposed Electoral Divisions				
Division	Enrolment as at 31/01/2019	(%) Deviation from Quota	Projected Enrolment as at 31/03/2024	(%) Deviation from Quota
Division 1	24,543	-1.44	26,600	-3.28
Division 2	24,500	-1.61	28,990	5.41
Division 3	24,986	0.34	28,344	3.06
Division 4	23,414	-5.98	29,316	6.6
Division 5	26,598	6.81	28,387	3.22
Division 6	26,657	7.05	28,287	2.85
Division 7	24,551	-1.41	26,157	-4.89
Division 8	24,237	-2.67	26,021	-5.39
Division 9	24,299	-2.42	26,390	-4.04
Division 10	25,452	2.21	25,948	-5.65
Division 11	24,454	-1.8	26,457	-3.8
Division 12	25,132	0.92	29,128	5.91

Division 1

A single change has been proposed to increase enrolment in Division 1 by gaining a portion of the Beachmere and Ningi localities and the remainder of the Godwin Beach suburb from Division 2.

The proposed Division has 24,543 voters which is -1.44% below quota and is predicted to have 26,600 voters by 2024 which would be -3.28% below quota.

Division 2

The proposal reduces enrolment in Division 2 by contracting the boundaries in the north-east and south-east. In doing so, the Change Commission has been able to unite a large portion of Deception Bay in Division 5, while creating strong boundaries with a more sustainable projected enrolment outlook for Division 2.

One public suggestion requested the western boundary of Division 2 extend along Glenwood Drive to take in more of Morayfield. The Change Commission agreed with this submission however determined that Morayfield Road, Station Road, the railway line and Buchanan Road would be a more cohesive boundary.

The Change Commission also adopted a suggestion for the southern boundary on Mackie Road, Old Gympie Road and Frawley Avenue to move further south to Boundary Road. This proposed change unites an additional portion of Narangba in Division 2.

The Change Commission proposes the following changes. The Division:

- a. Gains a portion of the Morayfield suburb from Divisions 3 and 12;
- b. Gains part of Narangba that is bounded by Narangba Road, Boundary Road and the Bruce Highway from Division 7;
- c. Transfers part of Beachmere, Ningi and the balance of Godwin Beach to Division 1; and
- d. Transfers a large portion of the Deception Bay suburb to Division 5.

The proposed Division has 24,500 voters which is -1.61% below quota and is predicted to have 28,990 voters by 2024 which would be 5.41% above quota.

Division 3

To reduce enrolment in Division 3, the Change Commission adopted the Moreton Bay Regional Council's suggestion to transfer part of Caboolture to Division 12, using Old Gympie Road and the railway line as the boundary. It also transferred a portion of Morayfield to Division 2 as discussed above.

The Change Commission proposes the following changes. The Division:

- a. Gains part of the Caboolture suburb from Division 12, so that the western boundary of Division 3 follows the Caboolture locality boundary / Wararba Creek;
- b. Transfers a portion of the Morayfield suburb to Division 2; and
- c. Transfers a portion of Caboolture to Division 12.

The proposed Division has 24,986 voters which is 0.34% above quota and is predicted to have 28,344 voters by 2024 which would be 3.06% above quota.

Division 4

Division 4 is currently 26.36% above the quota and is projected to reach 37.35% by 2024. Therefore, substantial boundary changes are required to balance enrolment in this Division.

The Change Commission agreed with the suggestions to realign Division 4's western boundary to follow the Bruce Highway so that the suburb of Kallangur is united in Division 7. This change also enables the communities of North Lakes, Mango Hill and Griffin to remain largely within Division 4, with only the lower portion of Griffin that lies south of Dohles Rocks Road being transferred to Division 7. The northern boundary of Division 4 has also been contracted, transferring parts of Narangba and Deception Bay to Division 5.

The Change Commission proposes the following. The Division:

- a. Transfers its portion of Narangba and most of Deception Bay to Division 5;
- b. Transfers its portion of Kallangur so that it is united in Division 7; and
- c. Transfers part of Griffin south of Dohles Rocks Road to Division 7.

The proposed Division has 23,414 voters which is -5.98% below quota and is predicted to have 29,316 voters by 2024 which would be 6.6% above quota.

Division 5

Division 5 and its neighbouring Division 6 both needed to increase their enrolment. As Division 6 must expand northwards to gain electors from Division 5, it was logical that Division 5 move in a westerly direction and in doing so, unite a large portion of the Deception Bay area.

The Change Commission proposes the following changes. The Division:

- a. Gains parts of the Deception Bay suburb from Divisions 2 and 4;
- b. Gains part of Narangba locality from Division 4; and
- c. Transfers most of Redcliffe and parts of the Kippa-Ring and Scarborough suburbs to Division 6.

The proposed Division has 26,598 voters which is 6.81% above quota and is predicted to have 28,387 voters by 2024 which would be 3.22% above quota.

Division 6

Division 6's enrolment is projected to fall below the acceptable minimum quota by 2024. The boundaries of Division 6 have therefore been extended northwards to gain electors from Division 5 in the Redcliffe, Kippa-Ring and Scarborough suburbs, using Eversleigh Road, Walsh Street, Bryce Court, Ashmole Road and Klingner Road as the boundary.

The proposed Division has 26,657 voters which is 7.05% above quota and is predicted to have 28,287 voters by 2024 which would be 2.85% above quota.

Division 7

The Change Commission agreed with the suggestions and modified the eastern boundary of Division 7 to follow the Bruce Highway, uniting the suburb of Kallangur within this Division.

The northern boundary has been contracted south to follow Boundary Road, uniting a greater portion of Narangba in Division 2.

To accommodate the above changes, a portion of Griffin that lies south of Dohles Rocks Road has been transferred into Division 7, where it has connectivity with the Murrumba Downs area.

The Change Commission proposes the following changes. The Division:

- a. Gains a portion of Griffin and the balance of Kallangur from Division 4;
- b. Transfers its portion of Narangba to Division 2; and
- c. Transfers its portions of Kurwongbah and Petrie to Division 8.

The proposed Division has 24,551 voters which is -1.41% below quota and is predicted to have 26,157 voters by 2024 which would be -4.89% below quota.

Division 8

Division 8 has expanded in both a north and south direction, increasing its enrolment while also addressing the public suggestions. The proposed boundaries unite the Petrie, Lawnton, Strathpine and Bray Park suburbs, as well as portions of Kurwongbah and Joyner.

The northern boundary follows Cooper Road as requested within public suggestions, while the southern boundary also expanded to follow the Strathpine suburb boundary.

The Change Commission proposes the following changes. The Division:

- a. Gains a portion of Kurwongbah and Petrie from Division 7;
- b. Gains the balance of Strathpine from Division 9; and
- c. Transfers its portions of Warner and Cashmere and part of Joyner to Division 9.

The proposed Division has 24,237 voters which is -2.67% below quota and is predicted to have 26,021 voters by 2024 which would be -5.39% below quota.

Division 9

Division 9 is currently -12.8% below quota. As neighbouring Division 10 also needs to gain electors, Division 9 had to expand both north and west to gain electors from Divisions 8 and 11 respectively.

The proposed boundaries follow suburb boundaries where practicable and unite Cashmere, Clear Mountain, Eatons Hill, Warner and Brendale, the majority of Joyner and part of Albany Creek.

The Change Commission proposes the following changes. The Division:

- a. Gains the balance of Clear Mountain and part of Cashmere from Division 11;
- b. Gains a portion of Joyner, Warner and the remainder of Cashmere from Division 8;
- c. Transfers its portion of Strathpine, uniting the suburb in Division 8; and
- d. Transfers the part of Albany Creek that is bounded by the South Pine River, South Pine Road, Sandy Creek, Sussex Drive and the Dawn Road Reserve to Division 10.

The proposed Division has 24,299 voters which is -2.42% below quota and is predicted to have 26,390 voters by 2024 which would be -4.04% below quota.

Division 10

Division 10 is currently -14.8% below quota and is projected to be -21.23% below quota by 2024. To gain electors, Division 10 needed to expand north to include more of the Albany Creek suburb from Division 9.

While the Change Commission agreed with the suggestions and has followed the South Pine River in the north, the Division still needed more electors to balance its enrolment. An additional portion of Albany Creek was transferred from Division 9, with the boundary following South Pine / Old Northern Road, Sandy Creek, Sussex Drive, Rafter Avenue, Dawn Road Reserve and the locality boundary of Albany Creek.

A slight modification has also been made to Division 10's western boundary near Samford Road, so that it follows the Ferny Hills locality boundary.

The proposed Division has 25,452 voters which is 2.21% above quota and is predicted to have 25,948 voters by 2024 which would be -5.65% below quota.

Division 11

Minimal change has been made to Division 11, thereby maintaining the existing communities of interest within this Division.

The Change Commission proposes the following changes. The Division:

- a. Gains the balance of Camp Mountain from Division 10 and transfers its portion of Ferny Hills to Division 10; and
- b. Transfers the balance of the Clear Mountain and Cashmere suburbs to Division 9.

The proposed Division has 24,454 voters which is -1.8% below quota and is predicted to have 26,457 voters by 2024 which would be -3.8% below quota.

Division 12

The proposed modifications to Division 12 have created more easily identifiable boundaries and have helped reduce enrolment in neighbouring Division 3.

The Change Commission proposes the following changes. The Division:

- a. Gains part of the Caboolture suburb bounded by Old Gympie Road and the railway line from Division 3;
- b. Transfers a portion of Morayfield, north-east of Morayfield Road, to Division 2; and
- c. Transfers a portion of Caboolture to the north-east of Wararba Creek to Division 3.

The proposed Division has 25,132 voters which is 0.92% above quota and is predicted to have 29,128 voters by 2024 which would be 5.91% above quota.

COMMENTS ON THE PROPOSAL INVITED

Comments on this proposal are invited until 5pm, 8 August 2019. Comments can be lodged through:

Online Form

<https://ecq.qld.gov.au/lgr/moretonbay>

Email

LGCCsubmissions@ecq.qld.gov.au

Personal Delivery

Electoral Commission of Queensland
Level 20, 1 Eagle Street
BRISBANE QLD 4000

Post

Local Government Change Commission
GPO Box 1393
BRISBANE QLD 4001

It is recommended that those submitting comments:

- consider the enrolment requirements outlined in the Act and in this report;
- clearly state which division/s your comment relates to;
- provide supporting information for why you support or oppose a proposed boundary change or public submission; and
- if you oppose a change, provide alternative boundary suggestions and reasoning.

FINALISING THE REVIEW

After reviewing the public comments on the proposal, the Change Commission will make a final determination on the Council's divisional boundaries.

The results of a Change Commission review must be provided to the Minister for Local Government. A notice of results is published in a local newspaper, the Queensland Government Gazette and on the ECQ website.

A decision of the Change Commission is not subject to appeal.

IMPLEMENTATION

A local government change can only be implemented by the Governor in Council under a regulation.

The regulation may provide for anything that is necessary or convenient to facilitate the change.

APPENDIX A

Minister's Referral



Minister for Local Government,
Minister for Racing and
Minister for Multicultural Affairs

Our ref: MC18/7557

01 MAR 2019

Mr Pat Vidgen PSM
Electoral Commissioner
Electoral Commission Queensland
GPO Box 1393
BRISBANE QLD 4001

1 William Street
Brisbane Queensland 4000
PO Box 15009
City East Queensland 4002
Telephone +61 7 3719 7560
Email lgma@ministerial.qld.gov.au
Website www.dlgrma.qld.gov.au

ABN 65 959 415 158

Dear Pat

I am writing to you in relation to a Local Government electoral review that was undertaken by the Moreton Bay Regional Council in preparation for the 2020 Local Government quadrennial elections.

I have received a copy of correspondence from Mr Daryl Hitzman, Chief Executive Officer of the Council to you dated 29 November 2018 advising of the results of the review, including that the projected number of electors in 2020 would be out of the quota of a reasonable proportion of electors as required by the *Local Government Act 2009* (the Act) in 4 of the Council's 10 divisions. Mr Hitzman also submitted proposed adjustments to the divisional boundaries designed to bring the proportion of electors in all 10 divisions within quota.

Section 18 of the Act provides that only I may apply to the Local Government Change Commission (Change Commission) for an assessment of a proposed Local Government change. Further, under section 19 of the Act, the Change Commission must consider whether the Local Government change is consistent with the Act and must consider my views on any proposed changes.

Having examined the Council's submission, I consider it appropriate to refer the matter to you for independent assessment and determination by the Change Commission. I recommend that in assessing the proposed changes to divisional boundaries, the Change Commission considers the potential impacts on the proportion of electors in Division 2 arising from the current Newport and North Harbour developments in Burpengary East.

I have asked for Mr Daniel Westall, Manager, Governance, Local Government and Regional Services in the Department of Local Government, Racing and Multicultural Affairs to assist you with any further queries. You may wish to contact Mr Westall on [REDACTED] or by email at [REDACTED].

Yours sincerely

STIRLING HINCHLIFFE MP
Minister for Local Government,
Minister for Racing and
Minister for Multicultural Affairs



Minister for Local Government,
Minister for Racing and
Minister for Multicultural Affairs

Our ref: OUT19/2074

15 APR 2019

1 William Street
Brisbane Queensland 4000
PO Box 15009
City East Queensland 4002
Telephone +61 7 3719 7560
Email lgrma@ministerial.qld.gov.au
Website www.dlgrma.qld.gov.au

ABN 65 959 415 158

Mr Pat Vidgen PSM
Electoral Commissioner
Electoral Commission Queensland
GPO Box 1393
BRISBANE QLD 4001

Dear Pat

I refer to my letter of 1 March 2019 about the Local Government electoral review that was undertaken by the Moreton Bay Regional Council in preparation for the 2020 Local Government quadrennial elections.

I am writing to amend my previous correspondence, noting the total number of divisions in the Moreton Bay Regional Council is 12, instead of 10 and that the Newport development is located in Division 5, instead of Division 2.

I have asked Mr Daniel Westall, Manager Governance, Local Government Division in the Department of Local Government, Racing and Multicultural Affairs to assist you with any enquiries. You may wish to contact Mr Westall on [REDACTED] or by email at [REDACTED].

Yours sincerely


STIRLING HINCHLIFFE MP
Minister for Local Government,
Minister for Racing and
Minister for Multicultural Affairs

cc: Mr Daryl Hitzman
Chief Executive Officer
Moreton Bay Regional Council
PO Box 159
CABOOLTURE QLD 4510

APPENDIX B

Public Suggestions

Divisional Boundary Review of Moreton Bay Regional Council

List of Public Suggestions

Suggestion	Name / Organisation
1	Moreton Bay Regional Council
2	Gemma Gale
3	Emmily
4	Matthew Jefgs
5	Lisa Ness
6	Joshua Allan
7	Jarod Morrissey
8	John Tetley, Chief Executive Officer, Queensland Raceways
9	Gary McNair
10	Belinda Norrie
11	Bob Macintosh
12	Denise Sims

Office of the CEO

Contact	Darren Dallinger
Phone	[REDACTED]
Our Ref	A17880310 (A17611978) DD:kc
Your Ref	CCA/000013
Date	29 November 2018

Mr Pat Vidgen PSM
Electoral Commissioner
Electoral Commission of Queensland
GPO Box 1393
BRISBANE QLD 4001

Dear Electoral Commissioner

DIVISIONAL BOUNDARY REVIEW

I refer to your correspondence dated 19 September 2018 informing Council that the Local Government Change Commission (LGCC) was planning to finalise its assessments of suggested boundary adjustments for the March 2020 local government quadrennial elections by end of 2019.

Using the number of electors data for 2018, and projected number of electors data for 2023 from the Electoral Commission of Queensland, officers estimated the number of electors in each Council division for 2020. This data has been utilised in Council's review of divisional boundaries in preparation for the 2020 quadrennial local government elections.

The data identified four divisions which may be out of quota in 2020 as outlined below. For Moreton Bay Regional Council, the quota refers to the 'reasonable proportion of electors' plus or minus 10 per cent as defined in the *Local Government Act 2009*.

- Division 3 - plus 10.46 per cent
- Division 4 - plus 24.59 per cent
- Division 9 - minus 13.09 per cent
- Division 10 - minus 15.78 per cent

In order to bring the estimated number of electors in each division for 2020 within quota, boundary adjustments would be required between:

- Division 3 and Division 12;
- Division 4 and Division 7;
- Division 7 and Division 8;
- Division 8 and Division 9; and
- Division 9 and Division 10.

Council's suggested boundary adjustments have been identified using pragmatic boundaries such as roads, natural boundaries, existing divisional boundaries and communities of interest. Enclosed is a table that identifies the Statistical Area Level 1s (SA1s) to be transferred as a result of the abovementioned suggested boundary adjustments. Maps of these boundary adjustments are also enclosed.


A copy of this suggestion has been provided to the Minister for Local Government, Racing & Multicultural Affairs.

Your consideration of Council's submission in relation to this matter is appreciated.

Yours sincerely



Daryl Hitzman
Chief Executive Officer

cc *Hon Stirling Hinchliffe*
Minister for Local Government, Racing & Multicultural Affairs

CITYEAST QLD 4002

Encl *Table: Suggested Boundary Adjustments - Statistical Area Level 1s (SA1s) to be transferred*
Map 1 Proposed Divisional Boundary Change Div 3 and Div 12
Map 2 Proposed Divisional Boundary Change Div 4 and Div 7
Map 3 Proposed Divisional Boundary Change Div 7 and Div 8
Map 4 Proposed Divisional Boundary Change Div 8 and Div 9
Map 5 Proposed Divisional Boundary Change Div 9 and Div 10

Local Government Internal Boundary Review

Moreton Bay Regional Council: Suggested Boundary Adjustments - Statistical Area Level 1s (SA1s) to be transferred

MBRC Division	Projected enrolments March 2020	Projected Variation (%)	Quota Status		Proposed enrolments with suggested boundary	Projected Variation (%)	Quota Status
1	24,175	-4.36	In		24,175	-4.36	In
2	27,089	7.16	In		27,089	7.16	In
3	27,923	10.46	Out		27,525	8.89	In
4	31,494	24.59	Out		26,695	5.61	In
5	24,062	-4.81	In		24,062	-4.81	In
6	22,877	-9.50	In		22,877	-9.50	In
7	26,591	5.19	In		23,798	-5.85	In
8	24,320	-3.79	In		24,027	-4.95	In
9	21,968	-13.09	Out		27,060	7.05	In
10	21,290	-15.78	Out		24,083	-4.73	In
11	25,302	0.09	In		25,302	0.09	In
12	26,247	3.83	In		26,645	5.41	In

Low: 22,750
Average: 25,278
High: 27,806

Local Government Internal Boundary Review

Moreton Bay Regional Council: Data - Statistical Area Level 1s (SA1s) to be transferred

Proposed Divisional Boundary Change Div 3 and Div 12 - reflected in Map 1						
SA1KEY	Enrolment 2018	Projected Enrolment_2020	Projected Enrolment 2023	Current Division	Proposed Division	Comment
3136544	178	184	196	Division 3	Division 12	
3136619	205	214	230	Division 3	Division 12	
3136510	0	0	0	Division 3	Division 12	
3136604	28	28	28	Division 3	Division 12	
Proposed Divisional Boundary Change Div 4 and Div 7 - reflected in Map 2						
SA1KEY	Enrolment 2018	Projected Enrolment_2020	Projected Enrolment 2023	Current Division	Proposed Division	Comment
3138803	318	320	323	Division 4	Division 7	
3138807	256	254	251	Division 4	Division 7	
3138808	355	353	348	Division 4	Division 7	
3138809	548	545	539	Division 4	Division 7	
3138811	198	196	191	Division 4	Division 7	
3138814	276	291	319	Division 4	Division 7	
3138818	198	198	197	Division 4	Division 7	
3138828	209	207	204	Division 4	Division 7	
3138829	507	506	503	Division 4	Division 7	
3138830	265	268	274	Division 4	Division 7	
3138831	468	490	531	Division 4	Division 7	
3138832	408	406	403	Division 4	Division 7	
3138833	225	237	260	Division 4	Division 7	
3138810	354	381	429	Division 4	Division 7	
3138801	146	147	150	Division 4	Division 7	Split at School Road
3138918	0	0	0	Division 4	Division 7	

Table: Suggested Boundary Adjustments - Statistical Area Level 1s (SA1s) to be transferred

Local Government Internal Boundary Review

Moreton Bay Regional Council: Data - Statistical Area Level 1s (SA1s) to be transferred

Proposed Divisional Boundary Change Div 7 and Div 8 - reflected in Map 3						
SA1KEY	Enrolment 2018	Projected Enrolment_2020	Projected Enrolment 2023	Current Division	Proposed Division	Comment
3138815	6	117	320	Division 7	Division 8	Split at Dohles Rock Road
3138834	202	202	201	Division 7	Division 8	
3138835	328	330	334	Division 7	Division 8	
3138836	290	288	284	Division 7	Division 8	
3138837	238	218	182	Division 7	Division 8	
3139314	233	238	248	Division 7	Division 8	
3139315	153	175	214	Division 7	Division 8	
3139316	314	314	313	Division 7	Division 8	
3139317	261	258	253	Division 7	Division 8	
3139318	402	476	610	Division 7	Division 8	
3139319	143	143	144	Division 7	Division 8	
3139320	398	400	403	Division 7	Division 8	
3139321	0	16	45	Division 7	Division 8	
3139322	267	283	311	Division 7	Division 8	
3139323	245	278	337	Division 7	Division 8	
3139324	257	277	313	Division 7	Division 8	
3139325	225	230	238	Division 7	Division 8	
3139301	149	149	149	Division 7	Division 8	
3139302	248	253	262	Division 7	Division 8	
3139303	167	182	210	Division 7	Division 8	
3139304	201	203	207	Division 7	Division 8	
3139305	172	196	239	Division 7	Division 8	
3139306	274	314	387	Division 7	Division 8	
3139307	284	297	322	Division 7	Division 8	
3139308	312	468	752	Division 7	Division 8	
3139309	286	346	455	Division 7	Division 8	
3139310	203	203	202	Division 7	Division 8	
3139311	275	276	279	Division 7	Division 8	
3139312	259	288	340	Division 7	Division 8	
3139313	176	174	170	Division 7	Division 8	

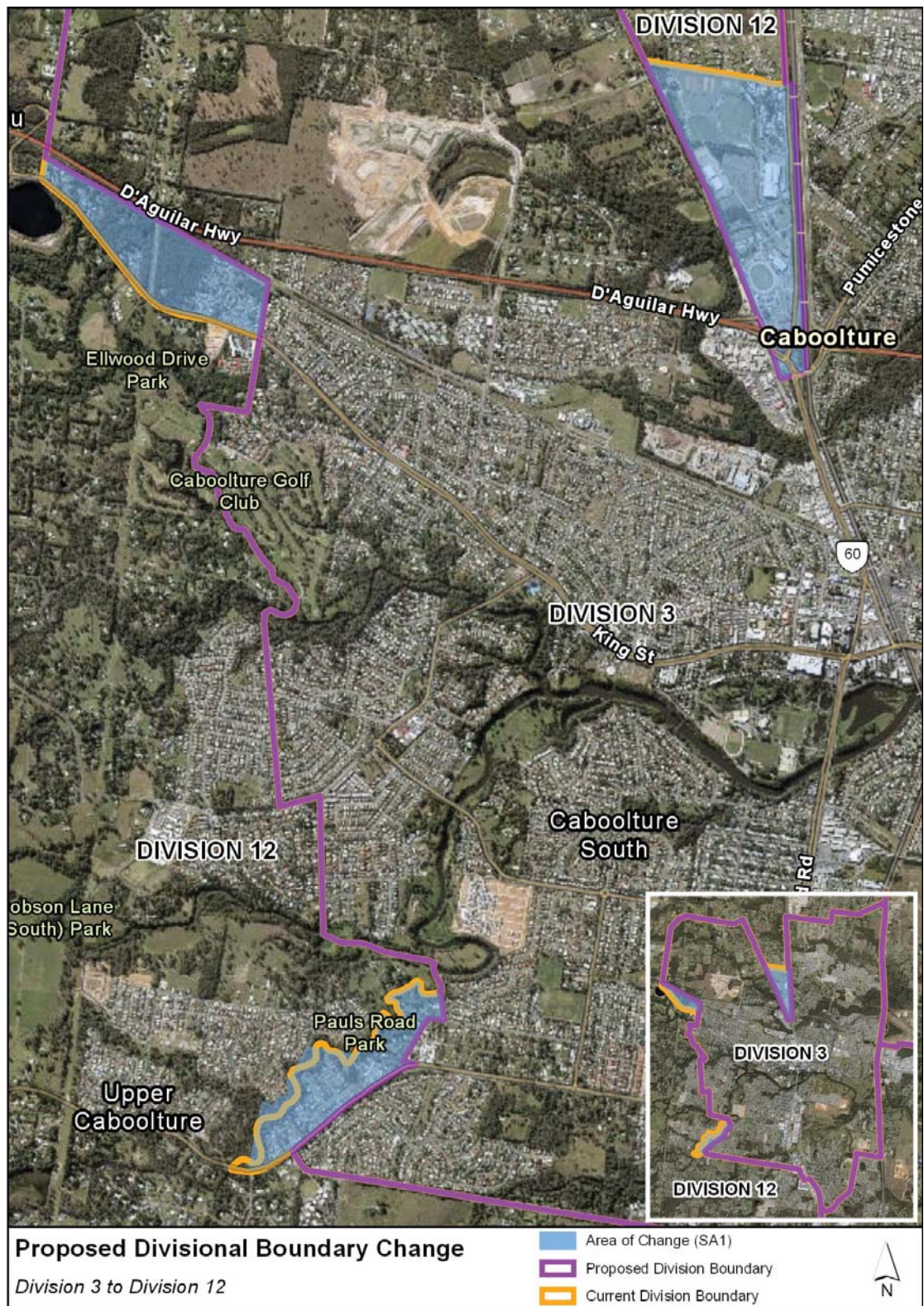
Table: Suggested Boundary Adjustments - Statistical Area Level 1s (SA1s) to be transferred

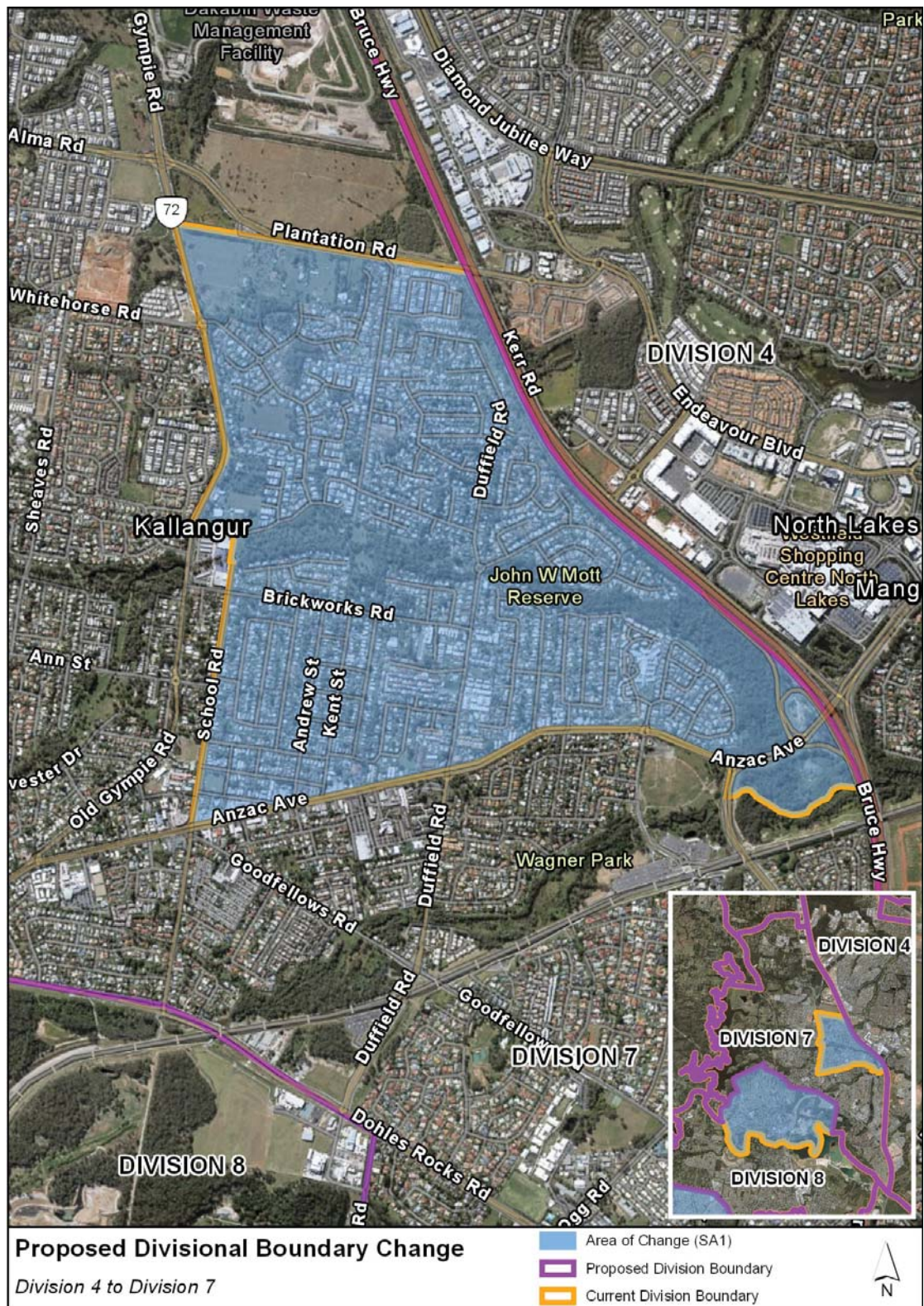
Local Government Internal Boundary Review

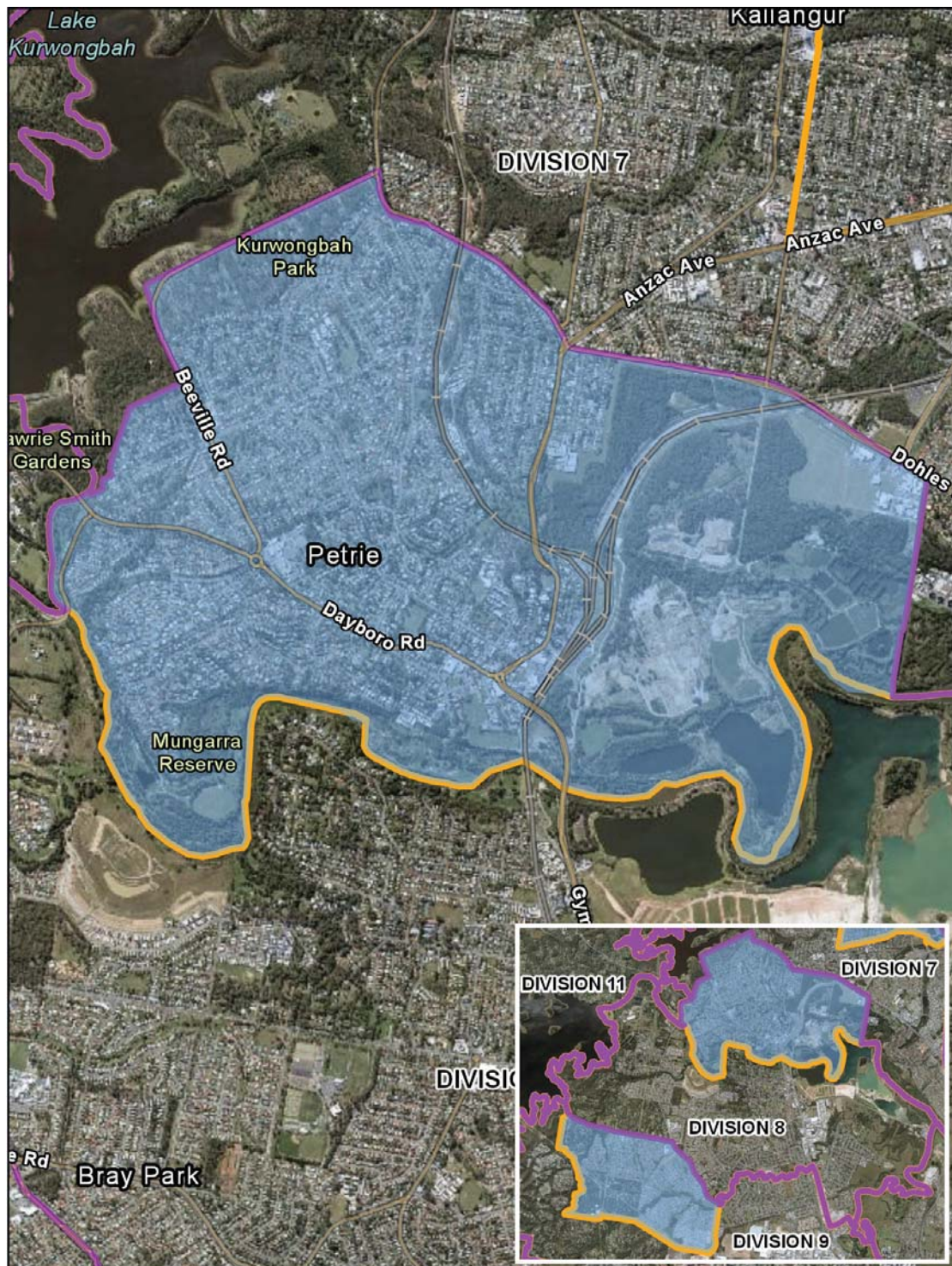
Moreton Bay Regional Council: Data - Statistical Area Level 1s (SA1s) to be transferred

Proposed Divisional Boundary Change Div 8 and Div 9 - reflected in Map 4						
SA1KEY	Enrolment 2018	Projected Enrolment_2020	Projected Enrolment 2023	Current Division	Proposed Division	Comment
3138310	159	164	173	Division 8	Division 9	
3138313	1403	1356	1271	Division 8	Division 9	
3138314	1029	1075	1160	Division 8	Division 9	
3138315	206	204	201	Division 8	Division 9	
3138316	433	443	461	Division 8	Division 9	
3138317	212	214	218	Division 8	Division 9	
3138318	232	227	218	Division 8	Division 9	
3138319	505	499	488	Division 8	Division 9	
3138320	316	315	312	Division 8	Division 9	
3138323	326	336	355	Division 8	Division 9	
3138324	225	219	207	Division 8	Division 9	
3138328	419	418	415	Division 8	Division 9	
3138329	1096	1136	1210	Division 8	Division 9	
3138330	307	310	316	Division 8	Division 9	
3138331	164	170	181	Division 8	Division 9	
3138332	431	429	425	Division 8	Division 9	
3138333	378	370	355	Division 8	Division 9	
Proposed Divisional Boundary Change Div 9 and Div 10 - reflected in Map 5						
SA1KEY	Enrolment 2018	Projected Enrolment_2020	Projected Enrolment 2023	Current Division	Proposed Division	Comment
3138215	275	281	293	Division 9	Division 10	
3138216	212	212	211	Division 9	Division 10	
3138217	271	267	259	Division 9	Division 10	
3138218	495	512	542	Division 9	Division 10	
3138219	421	422	423	Division 9	Division 10	
3138225	484	491	503	Division 9	Division 10	
3138226	168	184	212	Division 9	Division 10	
3138229	257	262	272	Division 9	Division 10	
3138241	159	162	167	Division 9	Division 10	

Table: Suggested Boundary Adjustments - Statistical Area Level 1s (SA1s) to be transferred





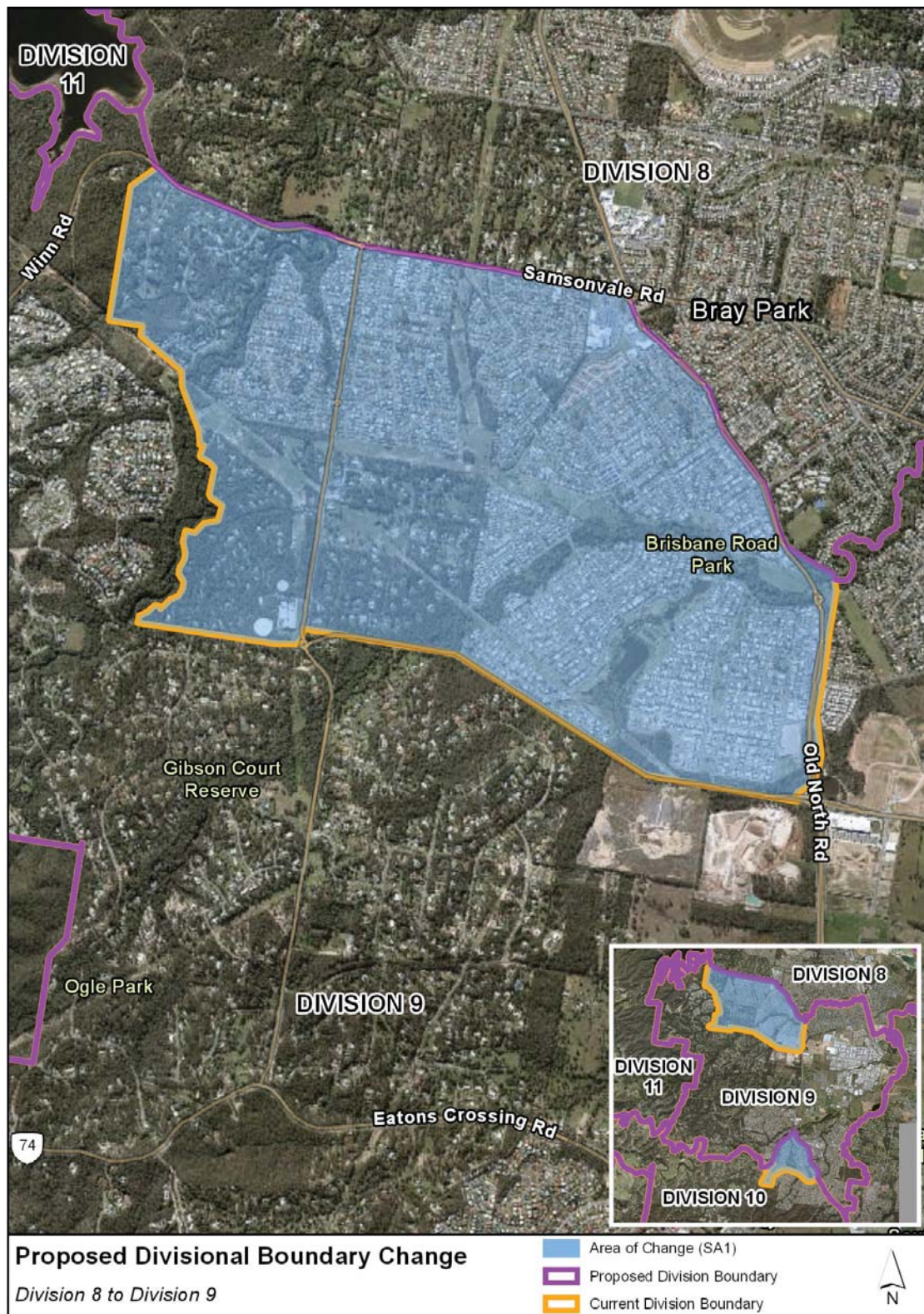


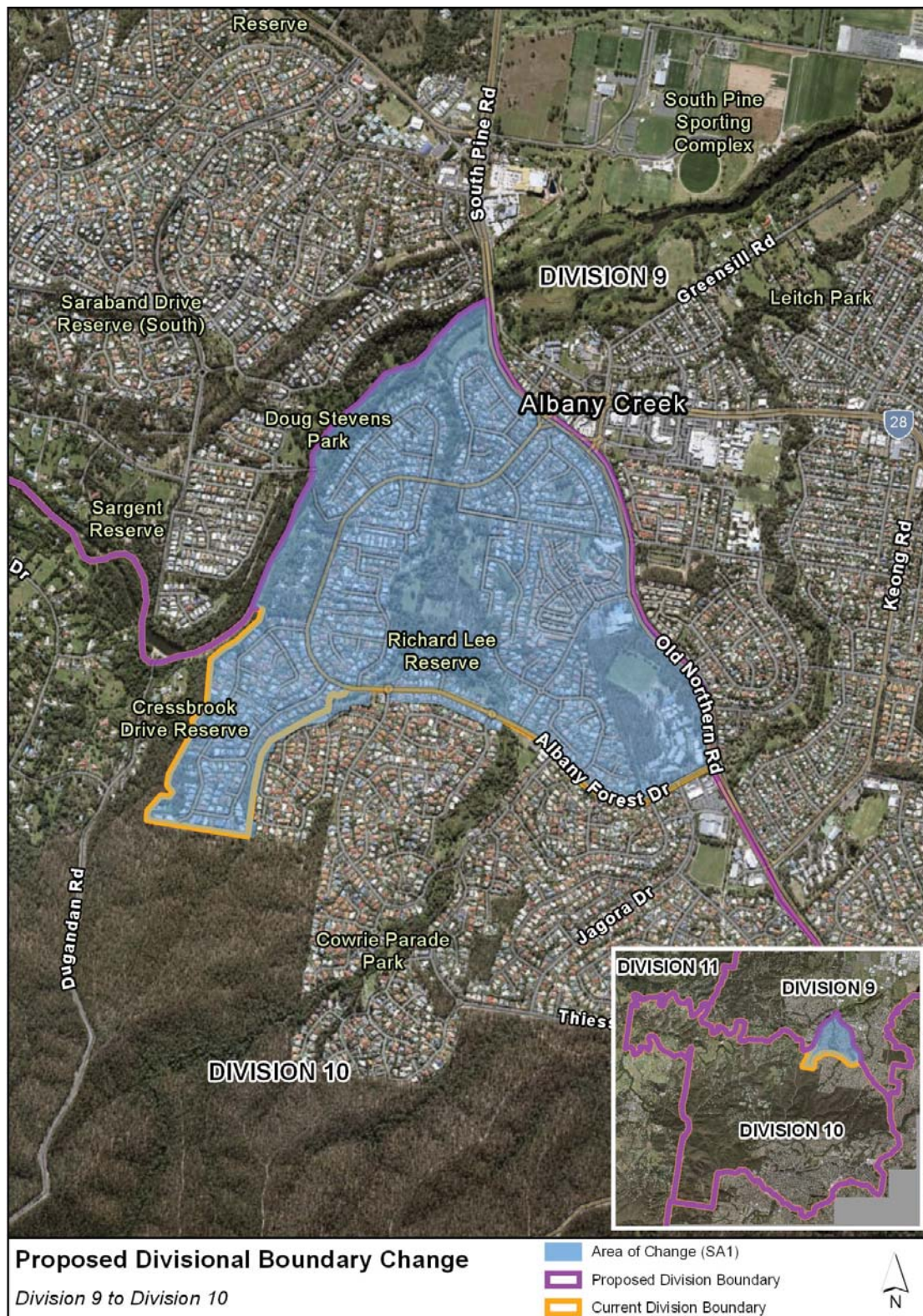
Proposed Divisional Boundary Change

Division 7 to Division 8

- Area of Change (SA1)
- Proposed Division Boundary
- Current Division Boundary







Sent: Saturday, 27 April 2019 1:47 PM
To: Subject: LG CC Submissions
Attachments: (78637) Moreton Bay Regional Local Government Area - Gemma Gale
Submission-to-ECQ-RE-MBRC-Boundaries.pdf

Online submission for **Moreton Bay Regional Local Government Area** from **Gemma Gale**

Submission Details

Name: Gemma Gale

Submission Text:

File Upload: Submission to ECQ RE MBRC Boundaries.pdf (313.5 KB)

Submission to Local Government Change Commission

RE: Moreton Bay Regional Council divisional boundary review

Introduction

My submission focusses on a specific boundary between Division 4 and Division 7. There is a very clear and necessary adjustment needed to the joint boundary of these two divisions. It is my recommendation and suggestion that the boundary be realigned (refer Figure 2) to follow the natural division of the Bruce Highway. This way the entire Kallangur suburb and CBD are under the one Councillor and not competing with another CBD (in this case North Lakes).

If necessary there is a section of Division 7 that could be spilt appropriately into Division 2 without much impact. I've detailed my findings in the [Specific enrolment requirements for Divisional Boundary Reviews](#) section.

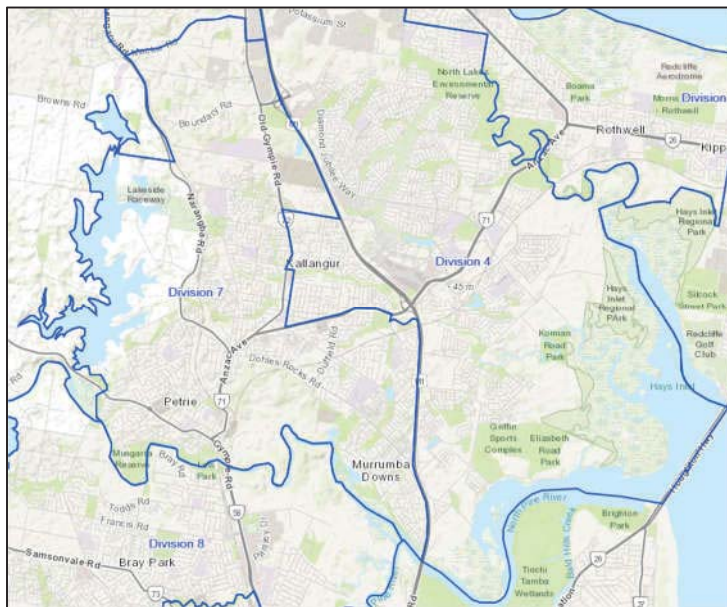


Figure 1: Current boundary between Division 7 and 4

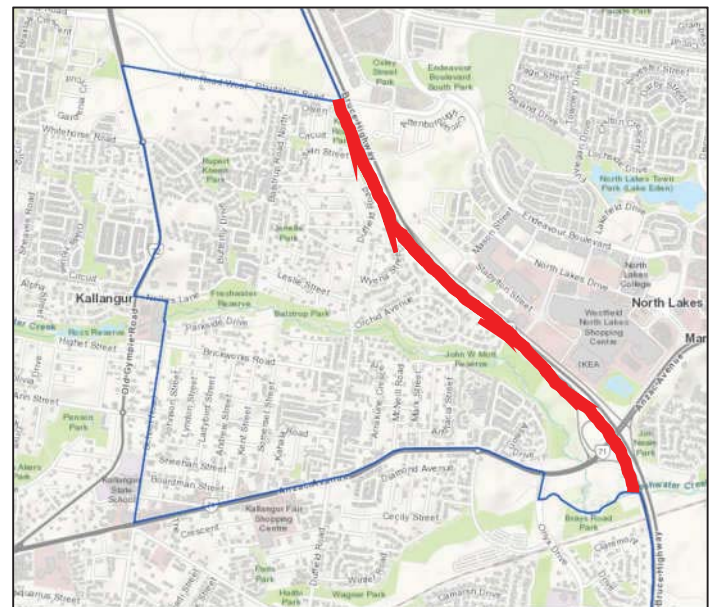


Figure 2: Proposed boundary realignment

Communities of interest

As shown in the figures above the Kallangur CBD is split in half by the current division boundary. Due to this unnatural split there is no proper representation of that area causing businesses to suffer and the area to stagnate. Kallangur needs one Councillor so that its people and businesses can be given a fair chance. With proper representation the area might have a chance to survive. Currently two Councillors are required to agree on funding for that area which rarely happens as the Division 4 Councillors is more focussed on the larger/newer CBD of North Lakes. In my opinion it is better if a division doesn't contain two CBD areas; it makes the sharing of funding unnecessarily complicated and often sees one area thrive over another (as evident when you compare Kallangur and North Lakes).

Means of communication and serviceability

Funding and fair representation have been made inequitable due to this division split and it is evident in the lack of prosperity in the Kallangur CBD area. The Division 4 Councillor has focused her attention on the new area of North Lakes but fails to represent the Kallangur voters. The Division 7 Councillor is currently unable to represent Kallangur properly due to the unnatural boundary that divides the suburb she is largely responsible for. Shifting the boundary will allow both Councillors to do a better job for the majority of their voters and CBD areas.

Creating sensible and definable boundaries

The Bruce Highway is a strong, natural boundary that won't be altered in the future so that particular boundary between Division 4 and 7 will remain certain.

Specific enrolment requirements for Divisional Boundary Reviews

The ECQ 2015 Final Determination Report shows the projected voter numbers for both divisions in the then final electoral divisions and the Summary of Current Enrolments shows the actual number of enrolments. Comparing the two you can see that Division 4 has exceeded the quota significantly whilst Division 7 only just went over the projection.

Division Name	Projected Enrolment at 28 Feb 2019	Current Enrolment at 31 Jan 2019	Difference
Division 4	27,037	31465	+4428
Division 7	25,022	25820	+798

SA1's that I propose be moved into Division 7 from Division 4 are outlined below and would increase Division 7 current enrolments by 4539 and projected enrolments by 4723.

Current Division Name	Proposed Division Name	SA1	Enrolment at 31 Jan 2019	Enrolment at 31 Mar 2024
Division 4	Division 7	3138801	150	161
Division 4	Division 7	3138803	327	323
Division 4	Division 7	3138807	250	248
Division 4	Division 7	3138808	354	355
Division 4	Division 7	3138809	537	572
Division 4	Division 7	3138810	343	405
Division 4	Division 7	3138811	192	192
Division 4	Division 7	3138814	277	295
Division 4	Division 7	3138818	201	199
Division 4	Division 7	3138828	217	215
Division 4	Division 7	3138829	539	558
Division 4	Division 7	3138830	277	285
Division 4	Division 7	3138831	462	501
Division 4	Division 7	3138832	413	414
Total			4539	4723

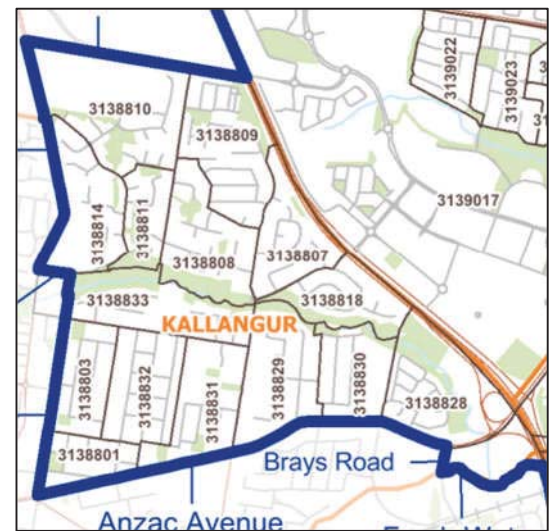


Figure 3: SA1's to be moved into Division 7

If the boundary was realigned as I've outlined above and without shifting any other SA1's the projected enrolments for both Divisions would be as follows.

Division Name	Current Enrolment at 31 Jan 2019	After Realignment	Projected Enrolment at 31 Mar 2024
Division 4	31465	26926	33050
Division 7	26001	30540	29768

Shifting the boundary of Division 4 doesn't increase the enrolments of Division 7 significantly so I don't believe any further adjustments are necessary. That said; if a decrease of Division 7 was necessary after the increase from Division 4 there is a section that could easily be spilt into Division 2 with minimal disruption. Making this adjustment would decrease Division 7 current enrolments by 2264 and projected enrolments by 3037 almost completely mitigating the initial increase from Division 4.

Current Division Name	Proposed Division Name	SA1	Enrolment at 31 Jan 2019	Enrolment at 31 Mar 2024
Division 7	Division 2	3137505	349	429
Division 7	Division 2	3137509	345	369
Division 7	Division 2	3137511	48	258
Division 7	Division 2	3137532	0	0
Division 7	Division 2	3138810	0	0
Division 7	Division 2	3138850	954	1040
Division 7	Division 2	3138852	568	941
Total			2264	3037

The new boundary would follow the existing boundary line of the North Coast Rail line until Alma Road, then follow Alma Road to connect with the existing division boundary line at Plantation Road. There is not a significant population or CBD area that would be affected by this shift – therefore the impact to voters would be minimal.

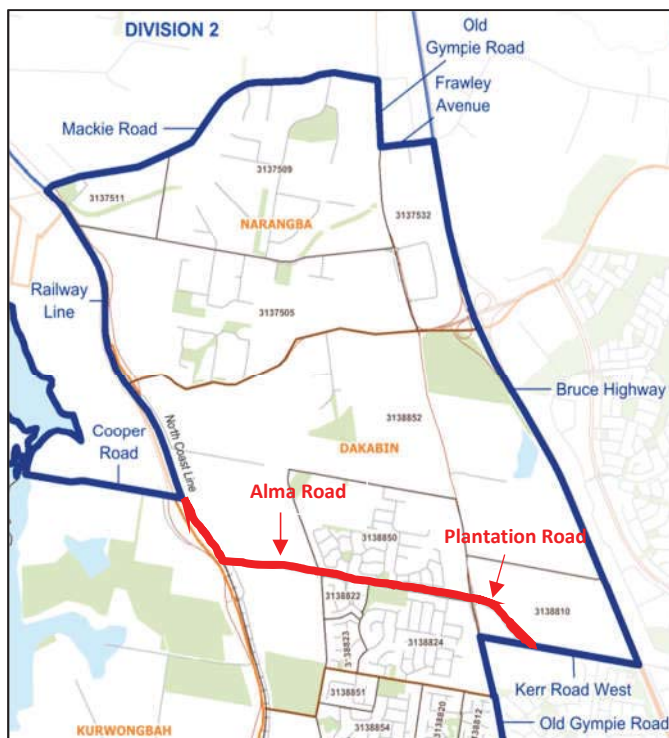


Figure 4: SA1's to be potentially moved to Division 2

If the boundary was realigned as mentioned above, the enrolment changes to the three affected Divisions would be as follows. As you can see this would keep the enrolments even for all of the Divisions.

Division Name	Current Enrolment at 31 Jan 2019	After Realignment	Difference	Projected Enrolments at 31 Mar 2024
Division 2	25720	27984	+2264	32993
Division 4	31465	26926	-4539	33050
Division 7	26001	28276	+2275	29768

Summary

In conclusion, altering the Division 7 boundary to include the whole of Kallangur is long overdue and is necessary to the survival and success of the suburb. The area has lacked consistent and attentive representation and the proposed realignment does not pose any serious risk to maintaining quota. This is not simply just a matter of numbers, it's the people that represent those numbers whose lives and livelihoods are disadvantaged because of a line on a map. This Divisional Boundary Review is the chance to right that wrong and to give those people the representation and fair go they deserve.

Sources

2015 Final Determination MBRC Report

https://www.ecq.qld.gov.au/_data/assets/pdf_file/0017/32921/2015-FINAL-DETERMINATION-Moreton-Bay-Regional-Council.pdf

MBRC Summary of Current Enrolments

https://www.ecq.qld.gov.au/_data/assets/pdf_file/0003/78177/MBRC-Summary-of-Current-Enrolment-per-Division-31.1.19.pdf

MBRC Division 4 Map

https://www.ecq.qld.gov.au/_data/assets/pdf_file/0010/77914/MORETON-BAY-REGIONAL-DIVISION-7.pdf

MBRC Division 7 Map

https://www.ecq.qld.gov.au/_data/assets/pdf_file/0007/77911/MORETON-BAY-REGIONAL-DIVISION-4.pdf

MBRC Division 2 Map

https://www.ecq.qld.gov.au/_data/assets/pdf_file/0005/77909/MORETON-BAY-REGIONAL-DIVISION-2.pdf

Current MBRC Regional Divisions Interactive Map

<https://qportal.information.qld.gov.au/arcgis/apps/webappviewer/index.html?id=d1b0a32fdcb0401285b0114d16226c75>

SA1 Excel Spreadsheet

<https://www.ecq.qld.gov.au/electoral-boundaries/lg-reviews/DBRs/2019-DBRs/moreton-bay>

Sent: Saturday, 27 April 2019 4:00 PM
To: LG CC Submissions
Subject: (78640) Moreton Bay Regional Local Government Area - Emmily

Online submission for **Moreton Bay Regional Local Government Area** from **Emmily**

Submission Details

Name: Emmily

Submission Text: I support the adjustment to the boundary between Division 4 and Division 7 so that it runs along the Bruce Highway instead of cutting Kallangur and the CBD in half. * Kallangur needs one Councillor so that its people and businesses can be given a fair chance. * The Bruce Highway is a strong, natural boundary that won't be altered in the future so that particular boundary between Division 4 and 7 will remain certain. * Currently funding and fair representation are inequitable due to the split and it is evident in the lack of prosperity in the Kallangur CBD area. * Shifting the boundary will not significantly impact the enrolment quota for either Division

File Upload: No file uploaded ()

Sent: Saturday, 27 April 2019 7:55 PM
To: LG CC Submissions
Subject: (78641) Moreton Bay Regional Local Government Area - Matthew Jefgs

Online submission for **Moreton Bay Regional Local Government Area** from **Matthew Jefgs**

Submission Details

Name: Matthew Jefgs

Submission Text: Dear ECQ, I wish to make this submission concerning the changes currently planned for Moreton Bay Division 7. The Eastern division boundary must remain as the Bruce Highway. Any other configuration will significantly reduce the representation which has always been focused on NorthLakes. This proposed boundary also dissects the Kallangur CBD and would like harm local businesses with divided representation.

File Upload: No file uploaded ()

Sent: Sunday, 28 April 2019 8:13 AM
To: LG CC Submissions
Subject: (78643) Moreton Bay Regional Local Government Area - Lisa Ness

Online submission for **Moreton Bay Regional Local Government Area** from **Lisa Ness**

Submission Details

Name: Lisa Ness

Submission Text: I support the adjustment to the boundary between Division 4 and Division 7 so that it runs along the Bruce Highway instead of cutting Kallangur and the CBD in half. *Kallangur needs one Councillor so that its people and businesses can be given a fair chance. *The Bruce Highway is a strong, natural boundary that won't be altered in the future so that particular boundary between Division 4 and 7 will remain certain. * Currently funding and fair representation are inequitable due to the split and it is evident in the lack of prosperity in the Kallangur CBD area. * Shifting the boundary will not significantly impact the enrolment quota for either Division

File Upload: No file uploaded ()

Sent: Sunday, 28 April 2019 9:49 AM
To: LG CC Submissions
Subject: (78644) Moreton Bay Regional Local Government Area - Joshua Allan

Online submission for **Moreton Bay Regional Local Government Area** from **Joshua Allan**

Submission Details

Name: Joshua Allan

Submission Text: To ECQ, RE: Moreton Bay Electoral Boundaries. Please do your best to try make areas like deception bay not have 3 councillors. Places like esplanade and esplanade south deception bay are treated horrendously due to councillors Not working together and it has an impact on the quality of investment on the waterfront in particular. Please try have just one councillor for the deception bay waterfront, and in particular try have just one or two councillors sharing a suburb, not 3 or more. Eg Julie Greer, james Houghton and Peter (forgot last name as I'm writing this) All share deception bay. Kind regards, Joshua Allan Ps. I'd also like to see reform of ECQ laws. Senior Public officials of council [REDACTED] shouldn't be allowed to campaign while in a public office when working so close with the mayor and unelected officials should not be allowed to represent at state schools and other closed venues that they are getting an unfair advantage over other candidates when they are already given incentives by being a registered party (paid for votes over a %, no tax on donations ect). (Qld labor candidates of federal election have heavily used schools by representing elected officials at schools and other major events without the elected official.

File Upload: No file uploaded ()

From: Jarod Morrissey
Sent: Friday, 3 May 2019 1:22 PM
To: LG CC Submissions
Subject: Moreton Bay Electorate Boundary Realignment Submission
Attachments: Moreton Bay Electorate realignment.docx

To ECQ,

Please find a submission for realignment of boundaries in the Moreton Bay Region.
Word document contains submission of screen shot images with editing lines and description about boundaries.
Hope this is adequate and unsure how exact voters residents in each electorate division.

Any questions and clarifications you may need please reply contacts and Ill try to answer or resolve.

Thank you from Voter in Division 12- Jarod M.

Sent from [Mail](#) for Windows 10

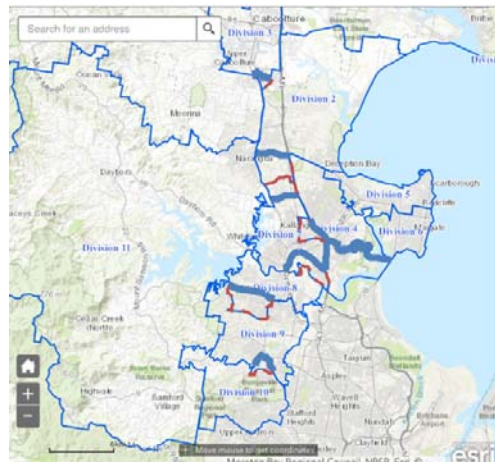
Dear Electorate Commission,

Submission for Moreton bay electorate boundary realignment:

- Blue solid line is new boundary
- Red dot line is removal of existing boundary

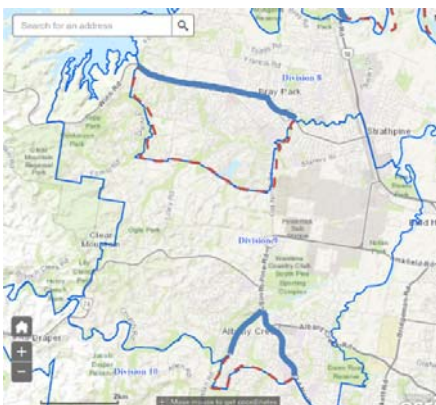
Moreton bay council

Closer View



Realignment of Division 10

New boundary following Old Northern Road and Doug Stevens Park/Reserve river/waterway.



Realignment of Division 9 (north)

New Boundary following Samsonvale Road

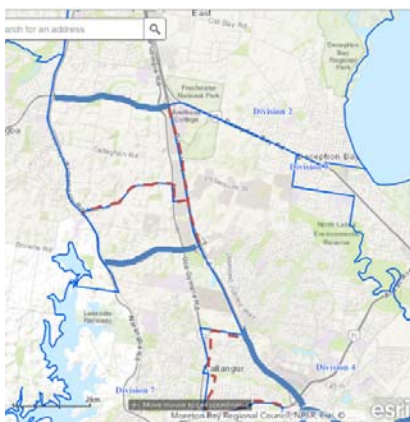


Division 8

New Boundary Expansion west to east

Gympie Road follow Redcliffe Peninsula line to Dohles Rock Road.

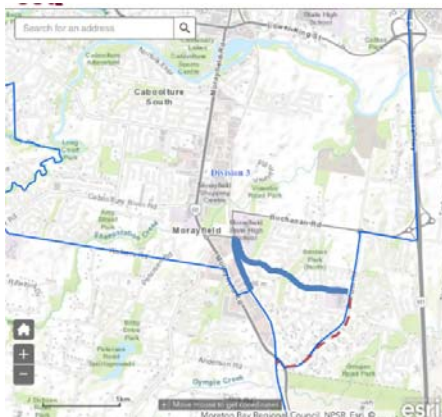
Follow Dohles Rocks Road south to Bruce Highway heading north to Freshwater creek, east direction following water way to Houghton Highway Bridge.



Division 7 expand Inc. Kallangur

Division 4 from south to north- follow Bruce highway until boundary Road heading west.

New boundary between division 4 and 2 across New Settlement Road.



Shrink division 3 south side.

Expanding division 2 by following Glenwood Drive from existing boundary to Station Road and following rail tracks south to existing boundary on North Coast Railway.



S-8

www.qldraceways.com.au

Email: [REDACTED]

[REDACTED] Nth Ipswich QLD 4305

ABN 41 133 848405

Tel: 61 7 [REDACTED]

Fax: 61 7 [REDACTED]

The Change Commissioner
Local Government Change Commission
GPO Box 1393
BRISBANE QLD 4001

8th May 2019

By Email: LGCCsubmissions@ecq.qld.gov.au

Dear Commissioner

Subj: Review of Boundaries for Moreton Bay Regional Council

Thank you for the opportunity to respond to make a submission for your consideration in relation to the divisional boundaries of the Moreton Bay Regional Council (**MBRC**).

We run a significant business in MBRC and have a passion for the continued growth in Tourism in the area through the provision of community and tourism related activities at Lakeside Park.

Since the last review there has been a significant change in demographic and community identity which I attribute to the growth of residential housing and its supporting infrastructure occurring across MBRC; which I feel could be addressed through the revision of the boundaries.

We believe will be in the best interests of the community, Lakeside; the services it provides and its interaction with the MBRC to modify the boundaries as follows:

Division 8:

If Division 8's boundaries could be amended to include all of the suburb of Petrie and be extended North to include Cooper Road in Narangba so that it takes in Lakeside Raceway and all of the rural properties adjacent to Lake Kurwongbah, SA1 31401138407 along with the small residential area of Kurwongbah to the East of Narangba Road but West of the Railway line, SA1 31401138417.

This will keep the communities of Petrie and Kurwongbah together as one community of interest for a Councillor. It could also be a benefit if Division 8 included the University precinct to Dohles Rocks Road as this is a common community of interest for the Petrie area and we expect to be working with that precinct for the conduct of advanced engineering courses.

This way the rail line then becomes a solid council division boundary for the Division as it is in the Narangba area which aligns the council and state electoral boundaries better.

Division 7:

To support those changes in Division 8 we suggest that Division 7 be amended to include all of Dakabin and Kallangur to the North of Dohles Rocks Road, including the section of Kallangur which is currently in Division 4 (SA1's 314021388801, 8802, 8807, 8809, 8810, 8811, 8828, 8829, 8830, 8831 and 8833 as this lets the highway be a council boundary between Divisions 4 and 7 and helps align with state electoral boundaries.

Should you have any questions of the writer please contact me via the phone number below or return email and I would be happy to clarify our thoughts further.

Yours sincerely,

[REDACTED]
John Jetley
CEO ~ Qld Raceways
[REDACTED]

11th May 2019

The Change Commissioner
Local Government Change Commission
GPO Box 1393
BRISBANE QLD 4001

Dear Commissioner

RE: Review of Boundaries for Moreton Bay Regional Council

Thank you for the opportunity to respond to make a submission for your consideration in relation to the divisional boundaries of the Moreton Bay Regional Council (**MBRC**).

I am a resident of MBRC and reside [REDACTED]

Since the last review there has been a significant change in demographic and community identity which I attribute to the growth and infrastructure occurring across MBRC and which I feel could be addressed through the revision of the boundaries.

The boundaries I would like to see and the reasons for are as follows:

Division 8:

I would like to see Division 8 be amended such that it would include all of the suburb of Petrie and be extended north to include Cooper Road in Narangba so that it takes in Lakeside Raceway, the rural properties adjacent to Lake Kurwongbah, and the small residential area of Kurwongbah to the east of Narangba Road but west of the railway line.

This will keep the communities of Petrie and Kurwongbah together as one community of interest. I also propose that Division 8 take in the University precinct to Dohles Rocks Road as this is a common community of interest for the Petrie area.

The Rail line then becomes a solid council division boundary in this area as it is in the Narangba area which aligns the council and state electoral boundaries.

Division 7:

I propose that Division 7 be amended to include all of Dakabin and Kallangur to the north of Dohles Rocks Road, including the section of Kallangur which is currently in Division 4 as this makes the highway a boundary between Divisions 4 and 7 and helps align with state electoral boundaries.

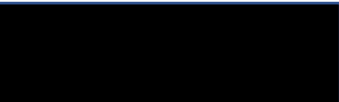
Should you have any questions please contact me via return email and I would be happy to assist.

Yours sincerely

Gary McNair

[REDACTED]

Belinda Norrie



19th May 2019

The Change Commissioner
Local Government Change Commission
GPO Box 1393 BRISBANE QLD 4001
LGCCsubmissions@ecq.qld.gov.au

Dear Commissioner

RE: Moreton Bay Regional Council Boundary Review

I would like to make a submission in relation to the divisional boundaries of the Moreton Bay Regional Council (MBRC). I am a resident of MBRC and [REDACTED]. Since the last election and last Census, Kallangur and surrounding areas have changed significantly. Dakabin, for example, has grown exponentially, mostly due to townhouse development.

I propose that Division 7 be amended to include all of Kallangur. Currently, a small section of Kallangur is chopped out and located in Division 4. It would be logical, as per the Federal boundary, for the divisional boundary to be the Bruce Highway. Therefore, all of Kallangur would be located in Division 7.

Due to explosive population growth in Dakabin, the northern boundary for Division 7 should be lowered from Mackie Road in Narangba down to Boundary Road. As such, Narangba would no longer be part of Division 7.

If numbers are still excessive for Division 7, the trainline should continue to be the boundary from Boundary Road in the north, down past Dakabin, removing Kurwongbah from Division 7.

The North Pine River should continue to be the boundary between Division 7 and 8. Thank you for this opportunity and please feel free to contact me, if you have questions regarding my submission.

Kind regards
Belinda Norrie



Robert A Macintosh JP (Qual)

Ph

[REDACTED]

Ph

[REDACTED]

Kallangur Q 4503

[REDACTED]

Mobile

[REDACTED]

S-11

Local Government Change Commission

GPO Box 1393

BRISBANE QLD 4001

By Email: LGCCsubmissions@ecq.qld.gov.au

Dear Commissioner

RE: Review of Boundaries for Moreton Bay Regional Council

Thank you for the opportunity to respond to make a submission for your consideration in relation to the divisional boundaries of the Moreton Bay Regional Council (MBRC).

I am a resident of MBRC and [REDACTED] My contact with council is through the Councillor in Division 4 who services most of our community.

Since the last review there has been a significant change in demographic and community identity which I attribute to the growth and infrastructure occurring across MBRC and which I feel could be addressed through the revision of the boundaries.

The boundaries I would like to see and the reasons for are as follows:

Division 4:

That the area in division 4, bordered by Plantation Road, Old Gympie Road from Plantation Road to Freshwater Creek, School Road from Freshwater Creek to Anzac Avenue, Anzac Avenue to The Bruce Highway, be transferred to division 7.

This would unite the community of interest for the Kallangur, Dakabin and Murrumba Downs.

Division 7:

That all of the suburb of Petrie including the University precinct and be extended north to include Cooper Road in Narangba so that it takes in Lakeside Raceway, the rural properties adjacent to Lake Kurwongbah, and the small residential area to the east of Narangba Road but west of the railway line.

This will keep the communities of Petrie and Kurwongbah together as one community of

Division 8:

The Rail line then becomes a solid council division boundary in this area as it is in the Narangba area which aligns the council and state electoral boundaries.

Yours sincerely

Robert Macintosh

19th May 2019

[REDACTED]

Electoral Commission of Queensland

GPO Box 1393

BRISBANE QLD 4001

Please see attached map.

Communities of Interest

Main business district on Anzac Avenue, Kallangur is currently spread between two Divisions, Division 4 which is over quota and Division 7 which is in quota. Combine Division 4 into Division 7. This keeps **CBD of Kallangur** together. Division 7 stays within quota.

New boundary follows the Bruce Highway. My aim for this would to try and attract some economic social cohesion.

Include all Kallangur together into Division 7 following Main North Train line until the border of Kurwongbah at Torrens and Narangba Road. and follows natural boundary of Lake Kurwongbah. This also keeps **Lakeside Raceway** within Division 7.

Social and economic

Using North Coast Train Line as a boundary to the West and the North Pine River to the south **keeps The Mill and University in Division 7**. This would be the catalyst for growth socially and economically for the Division and help with the sense of identity within an area where for example we are the only Division without a bank.

Thank you for having the opportunity to make recommendations. Kallangur has a long history and with North Lakes being the drawcard, from a community perspective both socially and economically The Mill and University need to remain in Division 7.

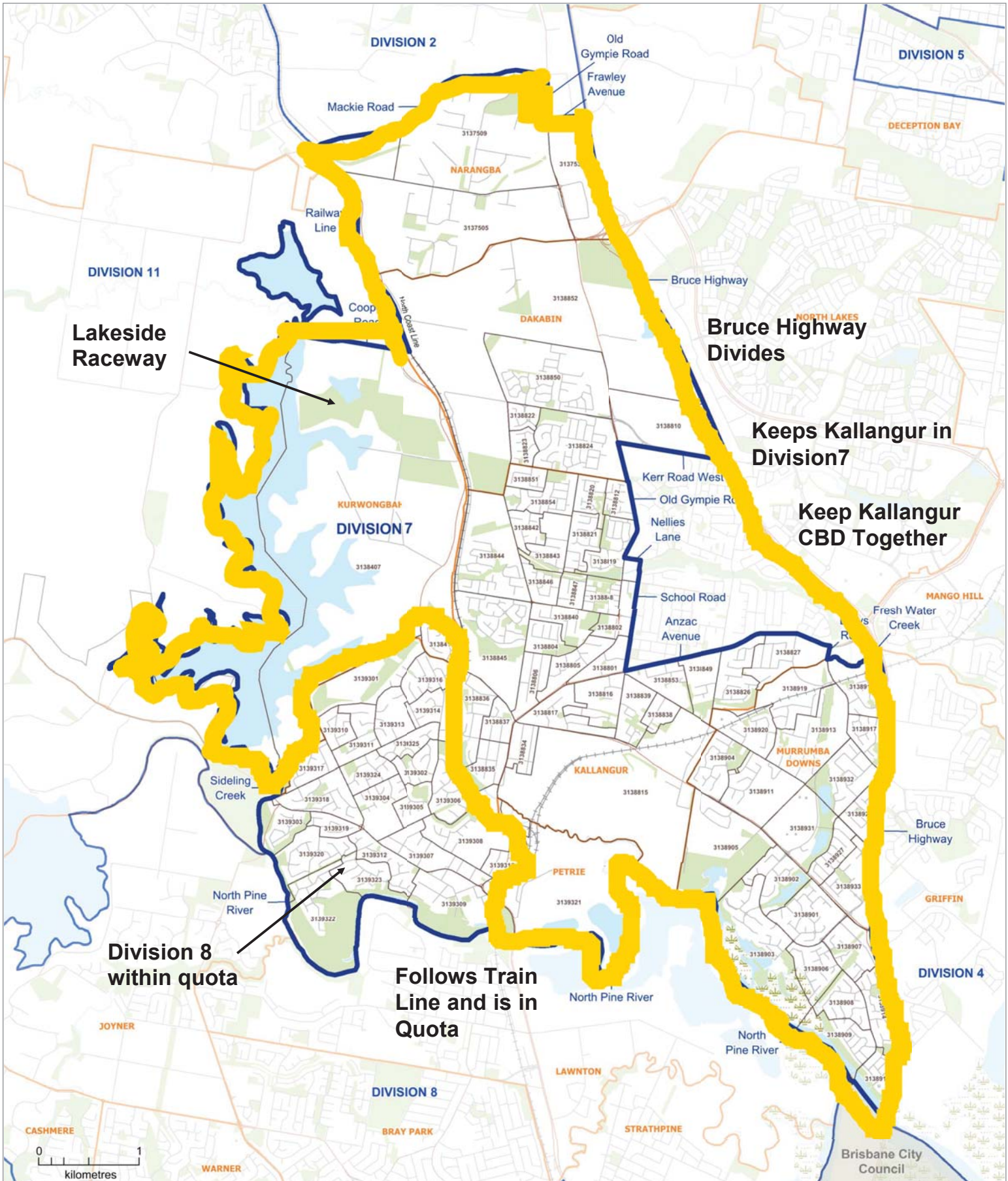
All the recommendations keep Division 7 within quota. Remainder of Petrie Division 8. This keeps Division 8 within quota.

Regards

Denise

Sims

Councillor for Division 7 but speaking as a Resident of Division 7



Lakeside Raceway

Bruce Highway Divides

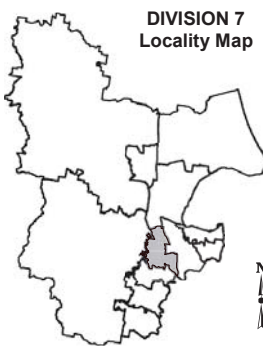
Keeps Kallangur in Division 7

Keep Kallangur CBD Together

Division 8 within quota

Follows Train Line and is in Quota

2019 Local Government Area Review
 MORETON BAY REGIONAL
 DIVISION 7
 Current Division and SA1 Boundaries



LEGEND

Division Boundary	Reserve, Parkland
Suburb Boundary	Waterbody
SA1 Boundary	Railway
Adjacent Division	Main Road
Adjacent Council	Wetland

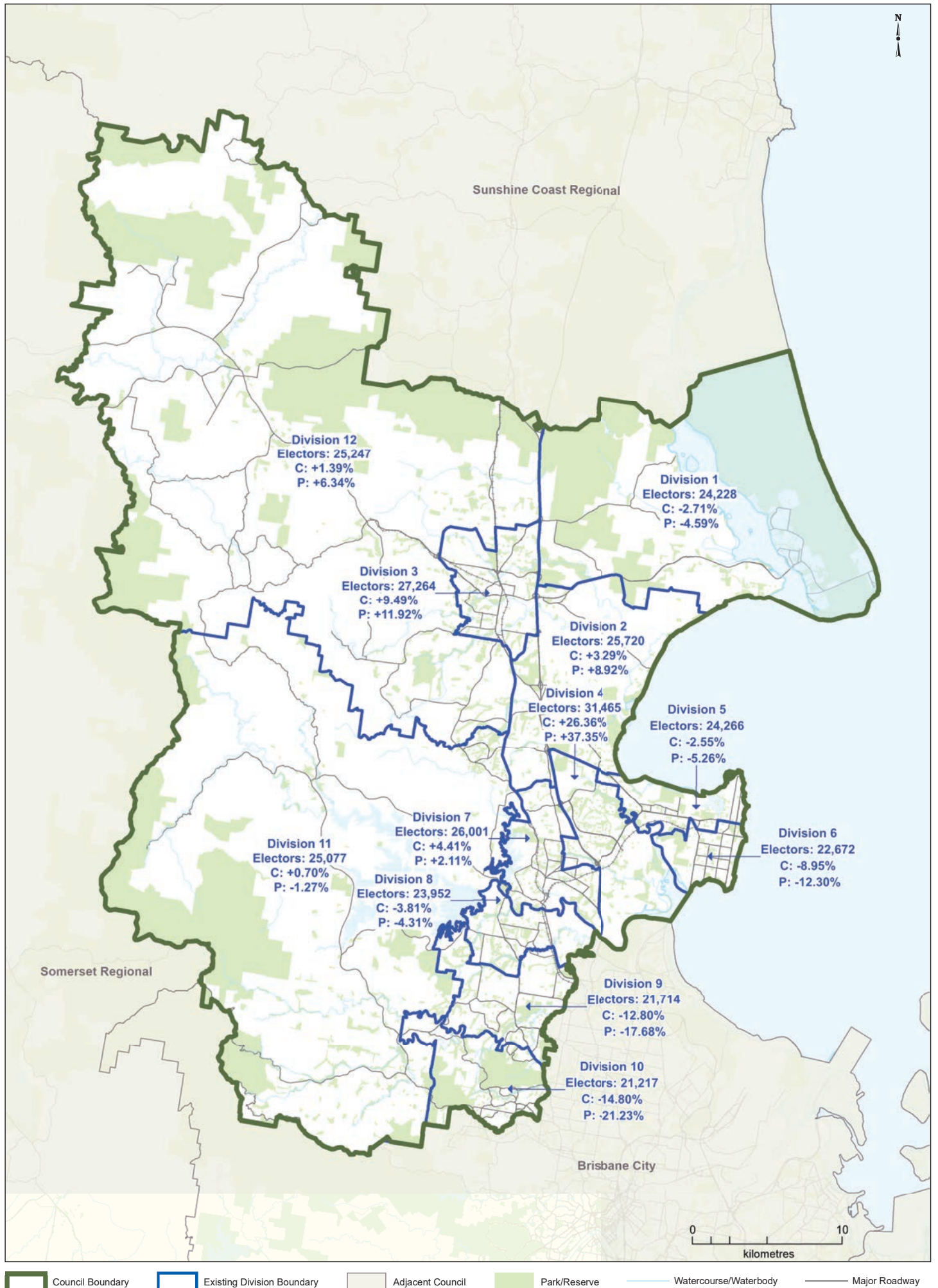
DISCLAIMER
 Statistical Area Level 1 (SA1) data used during compilation sourced from the Australian Bureau of Statistics. SA1s are spatial units defined in the 2016 Australian Statistical Geography Standard (ASGS).
 © The State of Queensland – 2019 (Department of Natural Resources, Mines and Energy)
 © Electoral Commission of Queensland 2019

APPENDIX C

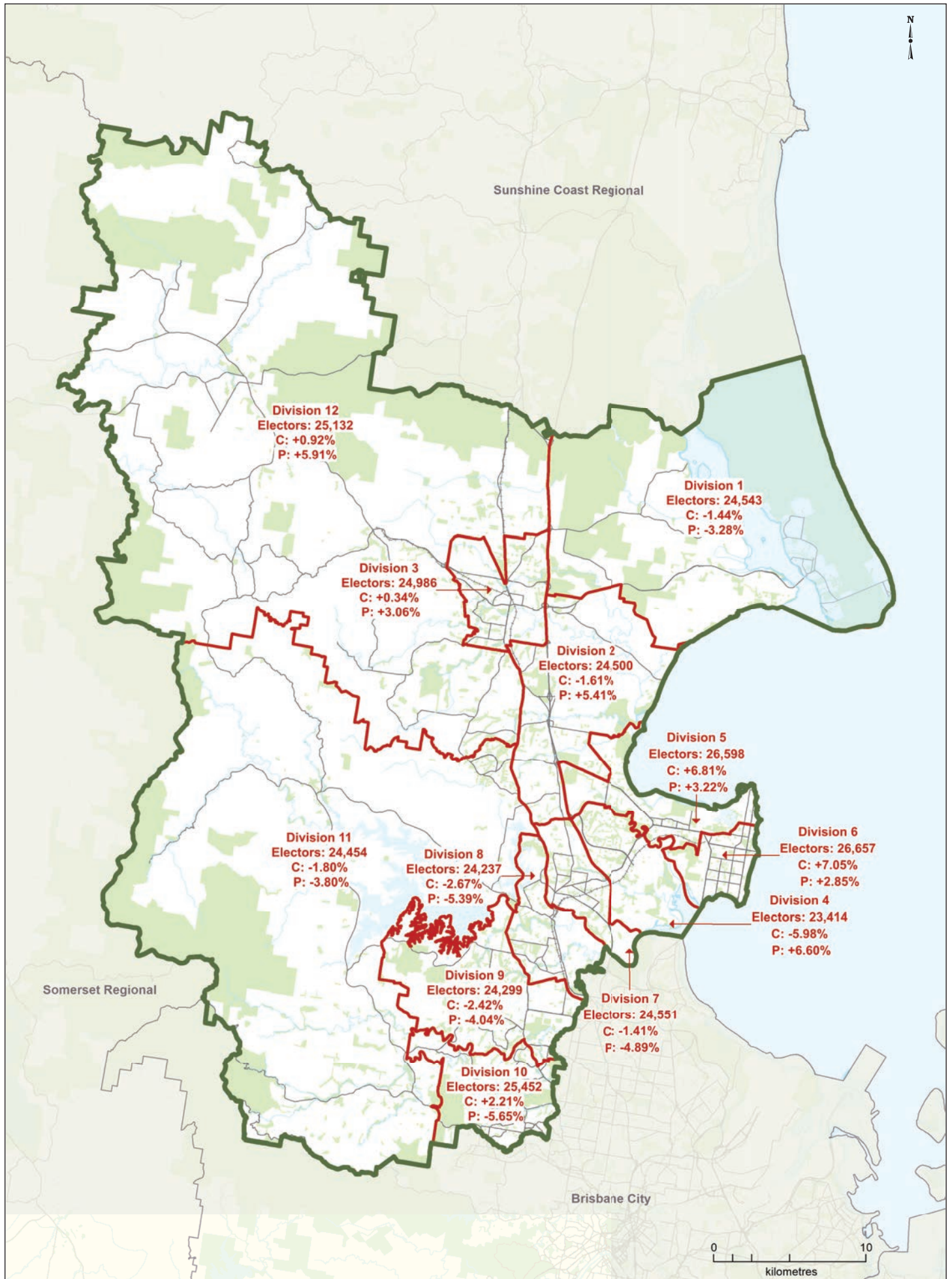
Maps

MORETON BAY REGIONAL

Existing Electoral Divisions



MORETON BAY REGIONAL Proposed Electoral Divisions



 Council Boundary
 Proposed Division Boundary
 Adjacent Council
 Park/Reserve
 Watercourse/Waterbody
 Major Roadway










This product was created using datasets from various authoritative sources and is intended as a guide only to display proposed divisional boundaries. Elector deviation is referenced as C(Current) and P(Projected). The digital GIS data is available FREE to download from Queensland Spatial Catalogue, or Qspatial, at <http://qldspatial.information.qld.gov.au>

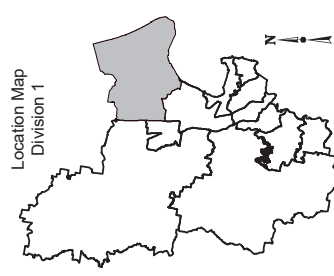
© The State of Queensland - 2019 (Department of Natural Resources, Mines and Energy), © Electoral Commission of Queensland 2019, Creative Commons (CC BY)

**PROPOSED DIVISIONAL
BOUNDARIES**

MORETON BAY REGIONAL
Division 1

LEGEND

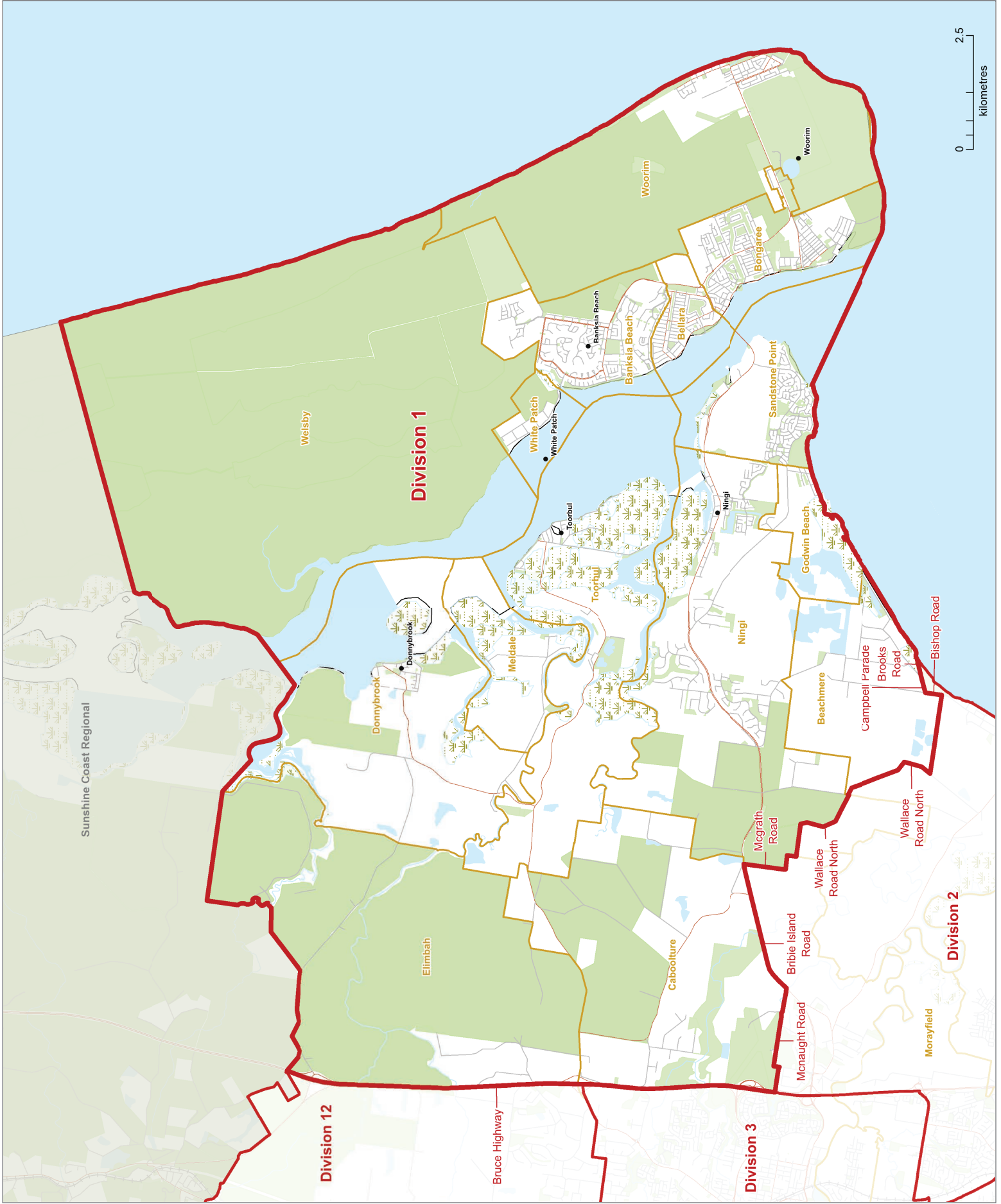
-  Proposed Division Boundary
-  Proposed Adjacent Division
-  Locality Boundary
-  Adjacent Council
-  Reserve, Parkland
-  Waterbody
-  Railway
-  Main Road
-  Welland

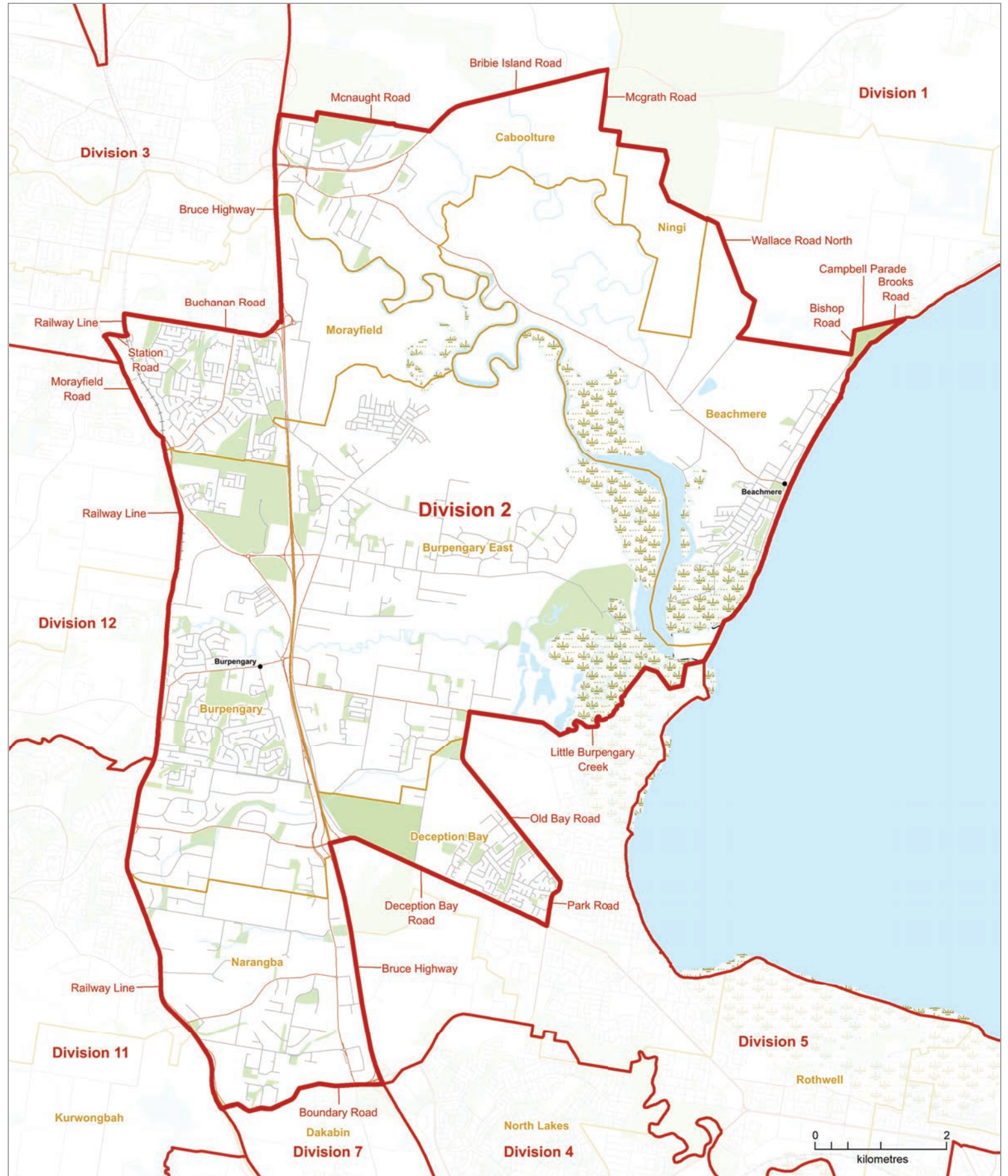


This product was created using datasets from various authoritative sources, and is intended as a guide only to display proposed divisional boundaries.

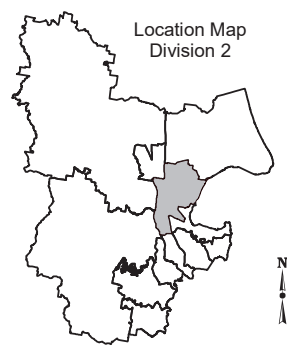
The digital GIS data is available FREE to download from Queensland Spatial Catalogue or Qspatial, at <http://qdsportal.information.qld.gov.au>

© The State of Queensland - 2019 (Department of Natural Resources, Mines and Energy)
© Electoral Commission of Queensland 2019
Creative Commons (CC BY)





2019
Local Government Area
Divisional Boundary Review
PROPOSED DIVISIONAL BOUNDARIES
MORETON BAY REGIONAL
Division 2



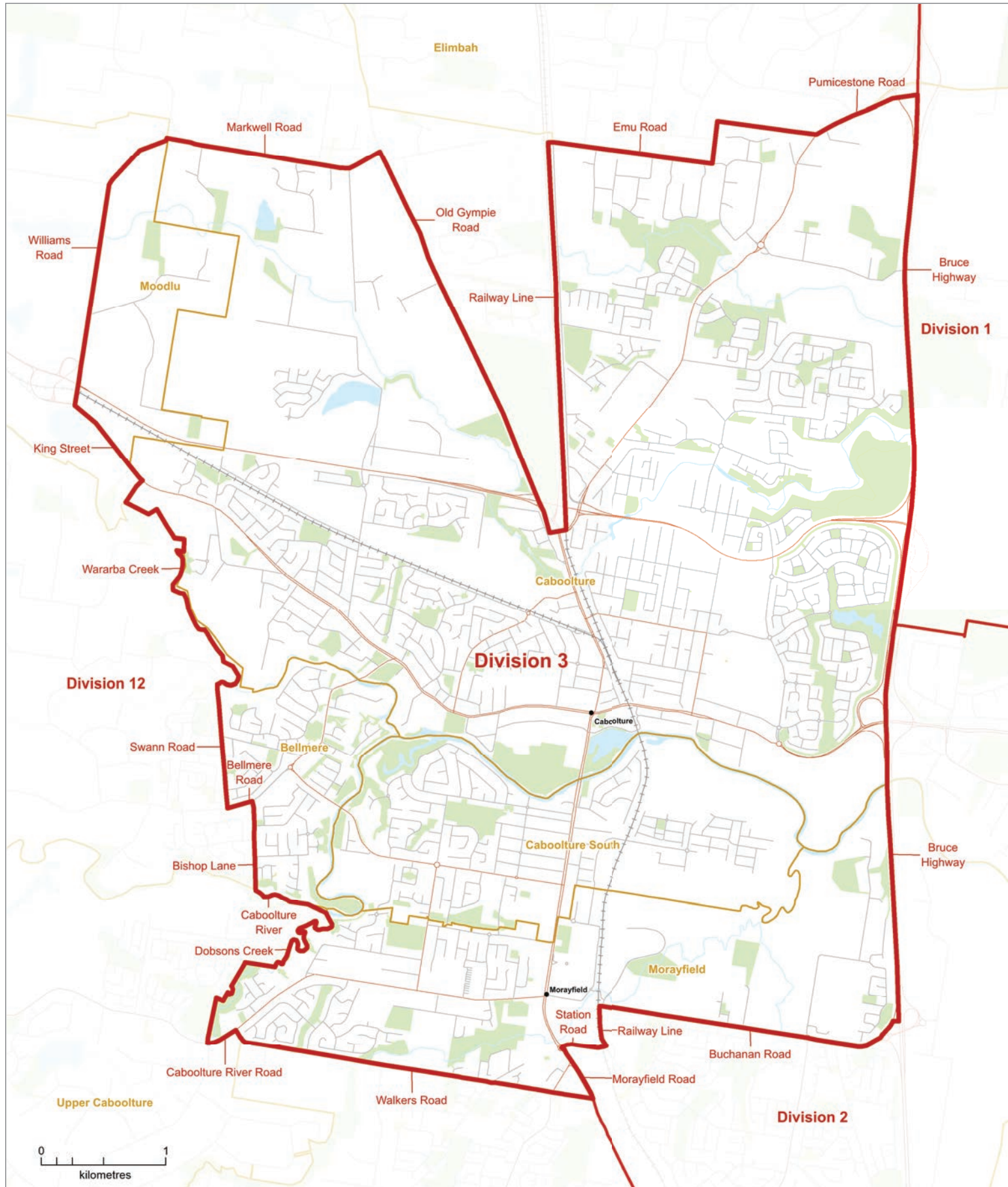
LEGEND

	Proposed Division Boundary		Reserve, Parkland
	Proposed Adjacent Division		Waterbody
	Locality Boundary		Railway
	Adjacent Council		Main Road
			Wetland

This product was created using datasets from various authoritative sources, and is intended as a guide only to display proposed divisional boundaries.

The digital GIS data is available FREE to download from Queensland Spatial Catalogue, or Qspatial, at <http://qldspatial.information.qld.gov.au>

© The State of Queensland - 2019 (Department of Natural Resources, Mines and Energy)
 © Electoral Commission of Queensland 2019 Creative Commons (CC BY)



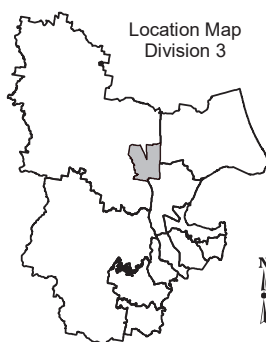
**2019
Local Government Area
Divisional Boundary Review**

PROPOSED DIVISIONAL BOUNDARIES

**MORETON BAY REGIONAL
Division 3**



**Electoral
Commission
QUEENSLAND**



LEGEND

	Proposed Division Boundary		Reserve, Parkland
	Proposed Adjacent Division		Waterbody
	Locality Boundary		Railway
	Adjacent Council		Main Road
			Wetland

This product was created using datasets from various authoritative sources, and is intended as a guide only to display proposed divisional boundaries.

The digital GIS data is available FREE to download from Queensland Spatial Catalogue, or Qspatial, at <http://qldspatial.information.qld.gov.au>

© The State of Queensland - 2019 (Department of Natural Resources, Mines and Energy)
© Electoral Commission of Queensland 2019 Creative Commons (CC BY)



2019
Local Government Area
Divisional Boundary Review

PROPOSED DIVISIONAL BOUNDARIES

MORETON BAY REGIONAL
Division 4



LEGEND

- | | | | |
|--|----------------------------|--|-------------------|
| | Proposed Division Boundary | | Reserve, Parkland |
| | Proposed Adjacent Division | | Waterbody |
| | Locality Boundary | | Railway |
| | Adjacent Council | | Main Road |
| | | | Wetland |

This product was created using datasets from various authoritative sources, and is intended as a guide only to display proposed divisional boundaries.








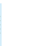

The digital GIS data is available FREE to download from Queensland Spatial Catalogue, or Qspatial, at <http://qldspatial.information.qld.gov.au>

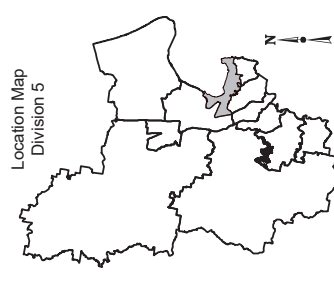
© The State of Queensland - 2019 (Department of Natural Resources, Mines and Energy)
 © Electoral Commission of Queensland 2019 Creative Commons (CC BY)

**PROPOSED DIVISIONAL
BOUNDARIES**

**MORETON BAY REGIONAL
Division 5**

LEGEND

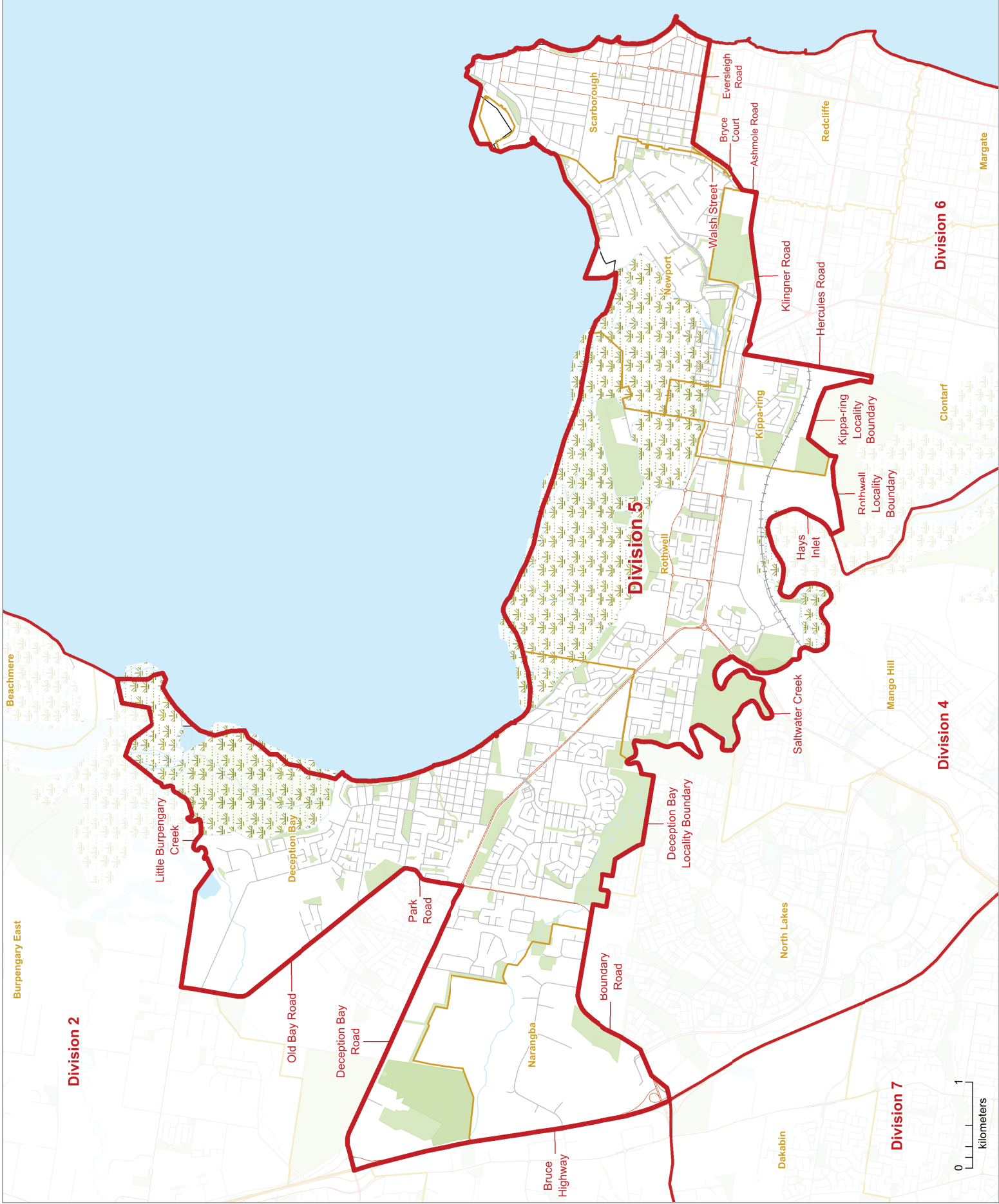
-  Proposed Division Boundary
-  Proposed Adjacent Division
-  Locality Boundary
-  Adjacent Council
-  Reserve, Parkland
-  Waterbody
-  Railway
-  Main Road
-  Welland



This product was created using datasets from various authoritative sources, and is intended as a guide only to display proposed divisional boundaries.

The digital GIS data is available FREE to download from Queensland Spatial Catalogue or Qspatial, at <http://qdsportal.information.qld.gov.au>

© The State of Queensland - 2019 (Department of Natural Resources, Mines and Energy)
© Electoral Commission of Queensland 2019
Creative Commons (CC BY)

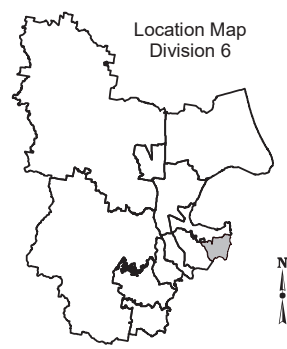




2019
Local Government Area
Divisional Boundary Review

PROPOSED DIVISIONAL BOUNDARIES

MORETON BAY REGIONAL
Division 6



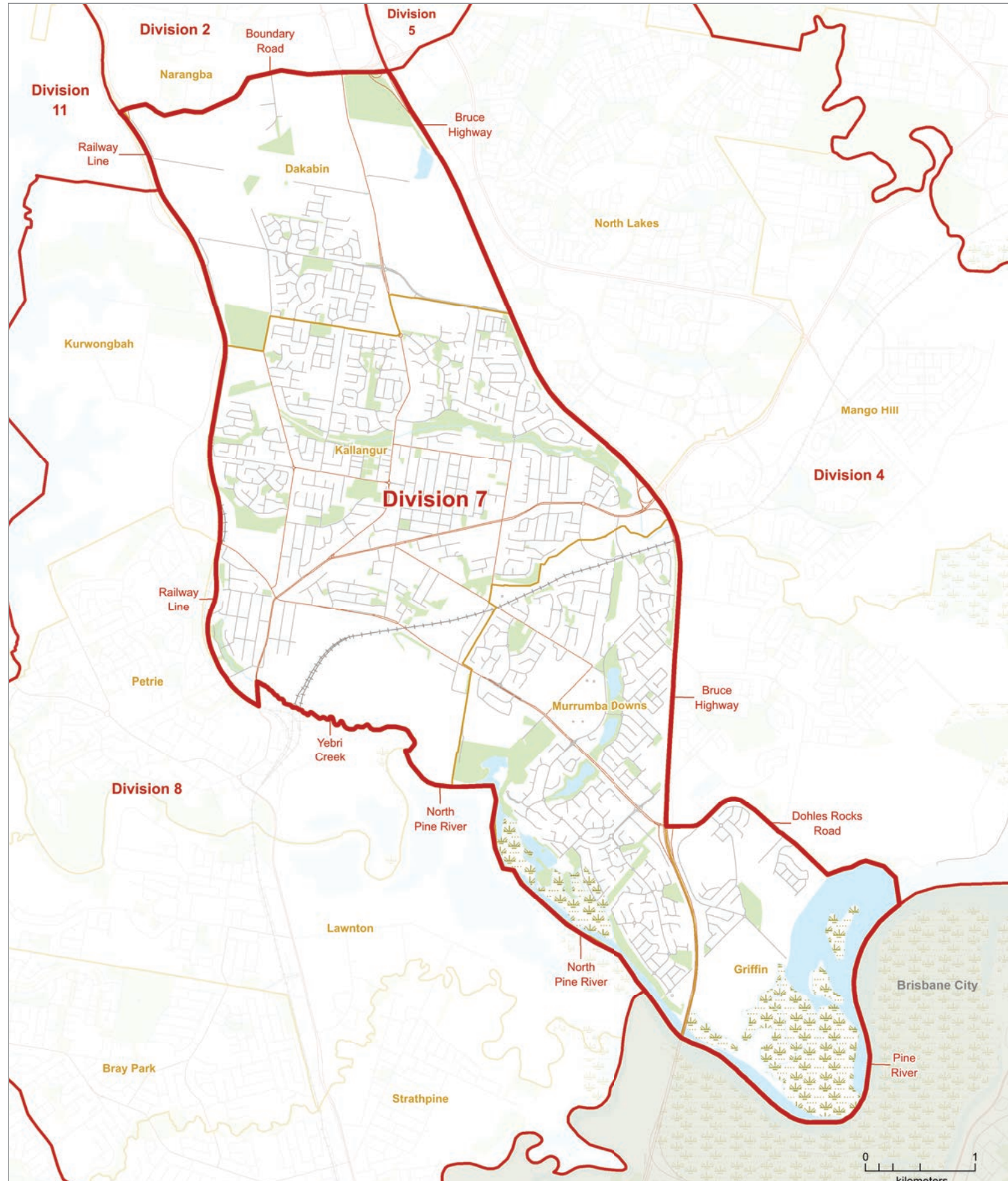
LEGEND

	Proposed Division Boundary		Reserve, Parkland
	Proposed Adjacent Division		Waterbody
	Locality Boundary		Railway
	Adjacent Council		Main Road
			Wetland

This product was created using datasets from various authoritative sources, and is intended as a guide only to display proposed divisional boundaries.

The digital GIS data is available FREE to download from Queensland Spatial Catalogue, or Qspatial, at <http://qldspatial.information.qld.gov.au>

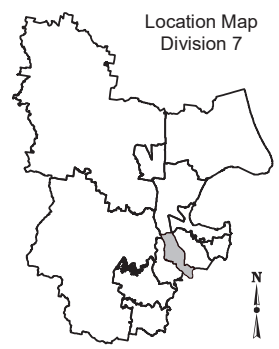
© The State of Queensland - 2019 (Department of Natural Resources, Mines and Energy)
 © Electoral Commission of Queensland 2019 Creative Commons (CC BY)



2019
Local Government Area
Divisional Boundary Review

PROPOSED DIVISIONAL BOUNDARIES

MORETON BAY REGIONAL
Division 7



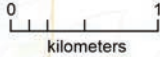
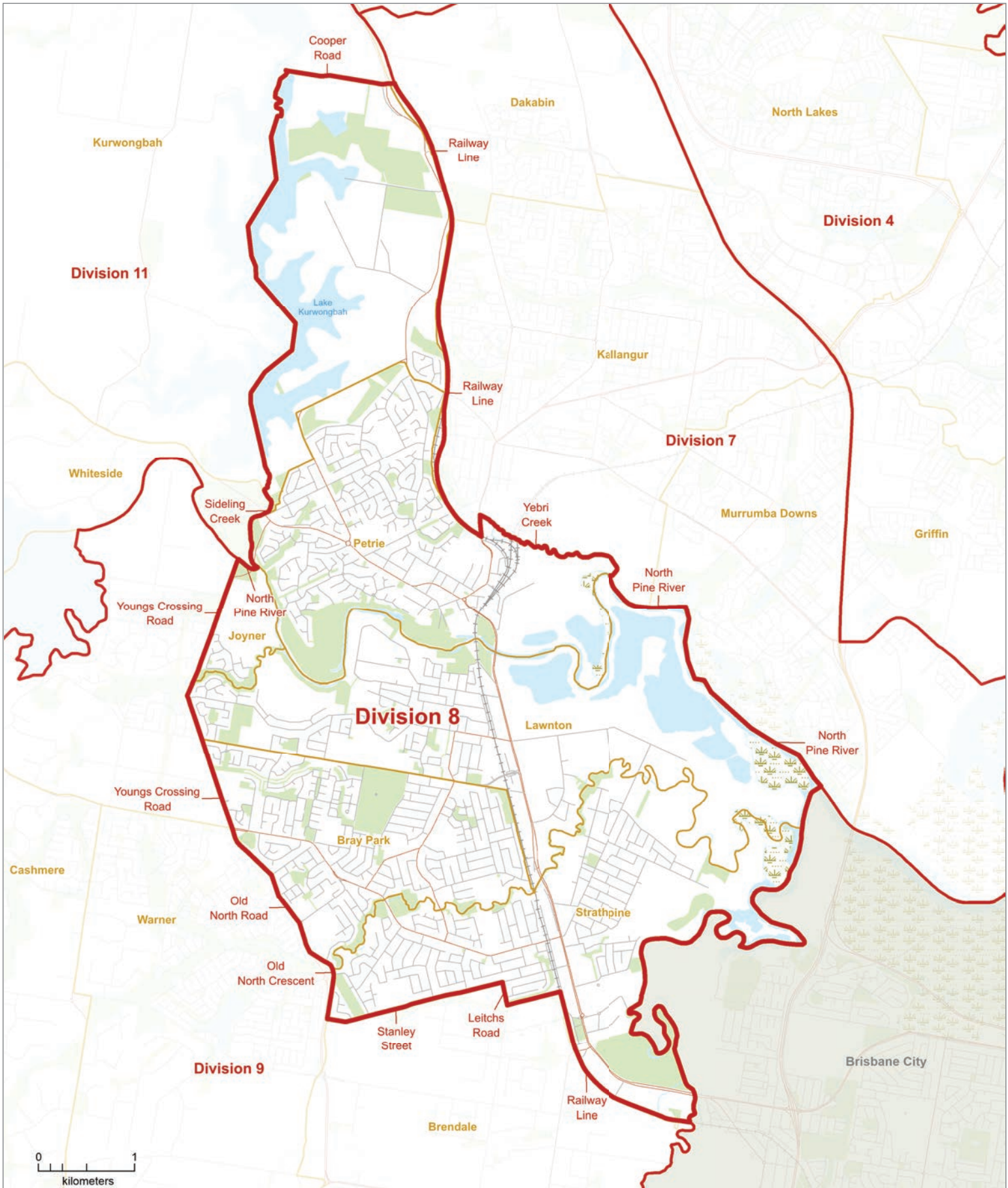
LEGEND

	Proposed Division Boundary		Reserve, Parkland
	Proposed Adjacent Division		Waterbody
	Locality Boundary		Railway
	Adjacent Council		Main Road
			Wetland

This product was created using datasets from various authoritative sources, and is intended as a guide only to display proposed divisional boundaries.

The digital GIS data is available FREE to download from Queensland Spatial Catalogue, or Qspatial, at <http://qldspatial.information.qld.gov.au>

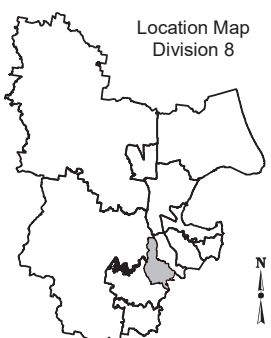
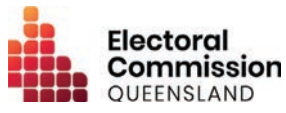
© The State of Queensland - 2019 (Department of Natural Resources, Mines and Energy)
 © Electoral Commission of Queensland 2019 Creative Commons (CC BY)



2019
Local Government Area
Divisional Boundary Review

PROPOSED DIVISIONAL BOUNDARIES

MORETON BAY REGIONAL
Division 8



LEGEND

	Proposed Division Boundary		Reserve, Parkland
	Proposed Adjacent Division		Waterbody
	Locality Boundary		Railway
	Adjacent Council		Main Road
			Wetland

This product was created using datasets from various authoritative sources, and is intended as a guide only to display proposed divisional boundaries.

The digital GIS data is available FREE to download from Queensland Spatial Catalogue, or Qspatial, at <http://qldspatial.information.qld.gov.au>

© The State of Queensland - 2019 (Department of Natural Resources, Mines and Energy)
 © Electoral Commission of Queensland 2019 Creative Commons (CC BY)

**PROPOSED DIVISIONAL
BOUNDARIES**

MORETON BAY REGIONAL

Division 9

LEGEND

- Proposed Division Boundary
- Proposed Adjacent Division
- Locality Boundary
- Adjacent Council
- Reserve, Parkland
- Waterbody
- Railway
- Main Road
- Welland

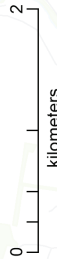
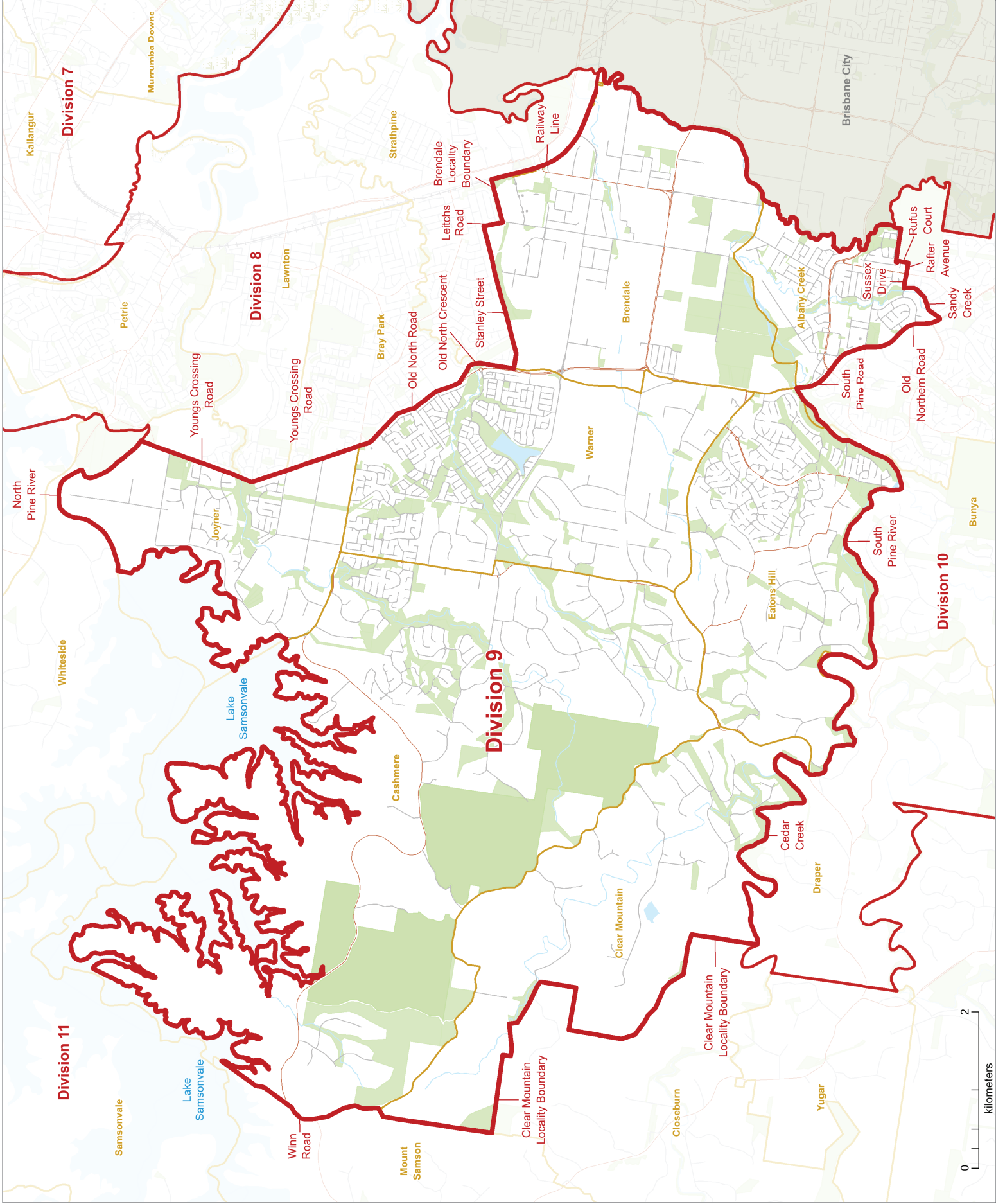
**Location Map
Division 9**



This product was created using datasets from various authoritative sources, and is intended as a guide only to display proposed divisional boundaries.

The digital GIS data is available FREE to download from Queensland Spatial Catalogue or Qspatial, at <http://qdsportal.information.qld.gov.au>

© The State of Queensland - 2019 (Department of Natural Resources, Mines and Energy)
© Electoral Commission of Queensland 2019
Creative Commons (CC BY)



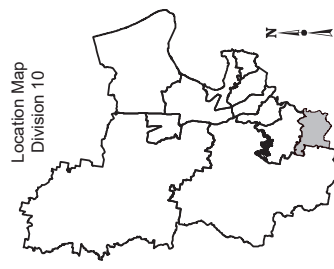
**PROPOSED DIVISIONAL
BOUNDARIES**

MORETON BAY REGIONAL

Division 10

LEGEND

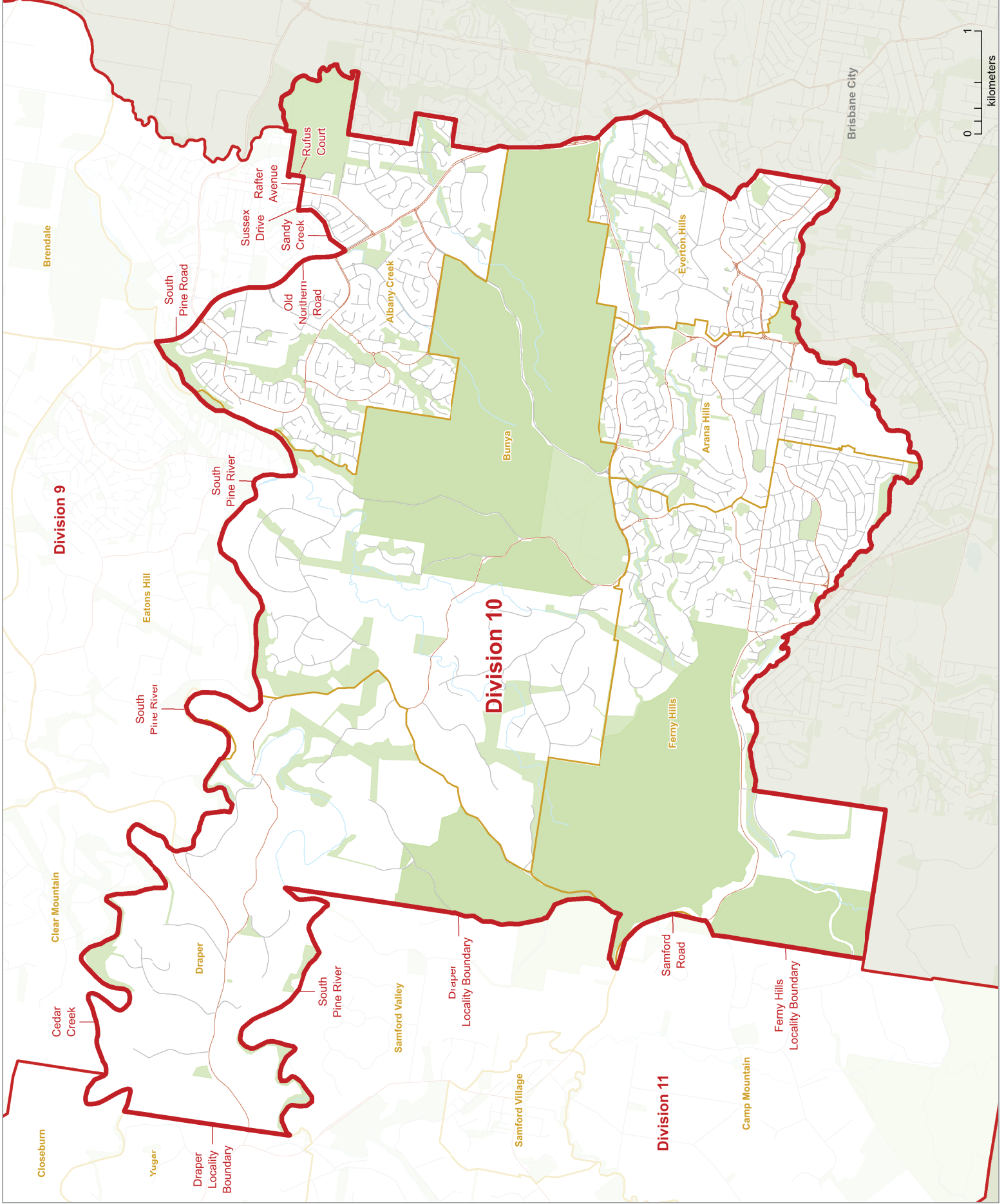
- Proposed Division Boundary
- Proposed Adjacent Division
- Locality Boundary
- Adjacent Council
- Reserve, Parkland
- Waterbody
- Railway
- Main Road
- Welland

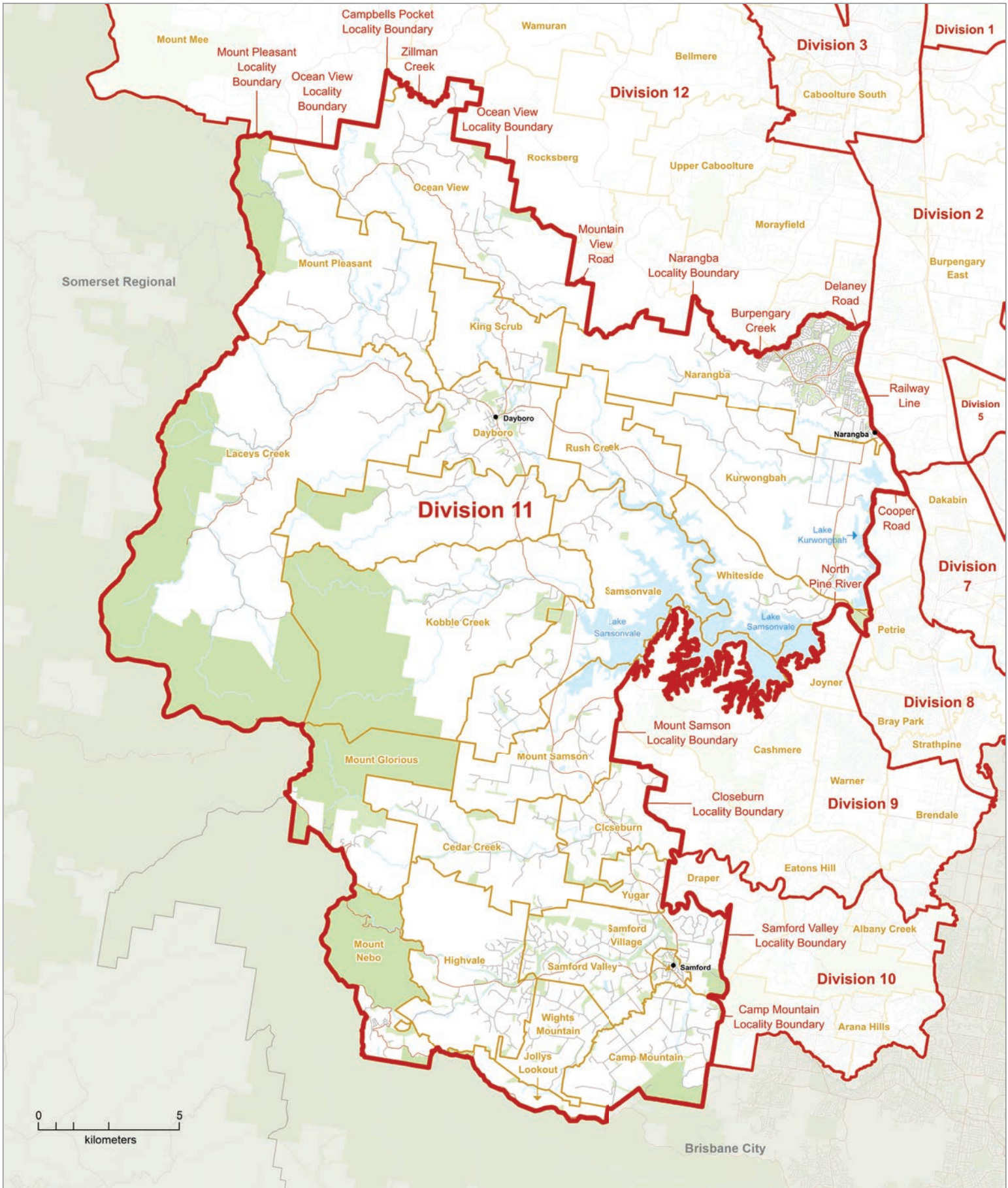


This product was created using datasets from various authoritative sources, and is intended as a guide only to display proposed divisional boundaries.

The digital GIS data is available FREE to download from Queensland Spatial Catalogue or Qspatial, at <http://qdsportal.information.qld.gov.au>

© The State of Queensland - 2019 (Department of Natural Resources, Mines and Energy)
© Electoral Commission of Queensland 2019
Creative Commons (CC BY)





2019
Local Government Area
Divisional Boundary Review

PROPOSED DIVISIONAL BOUNDARIES

MORETON BAY REGIONAL
Division 11



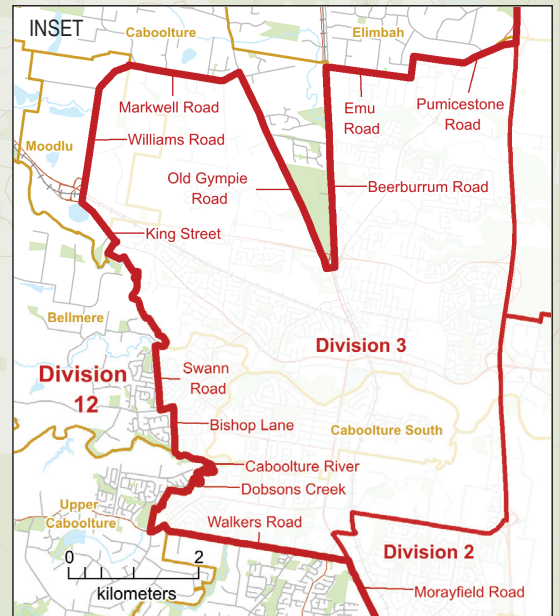
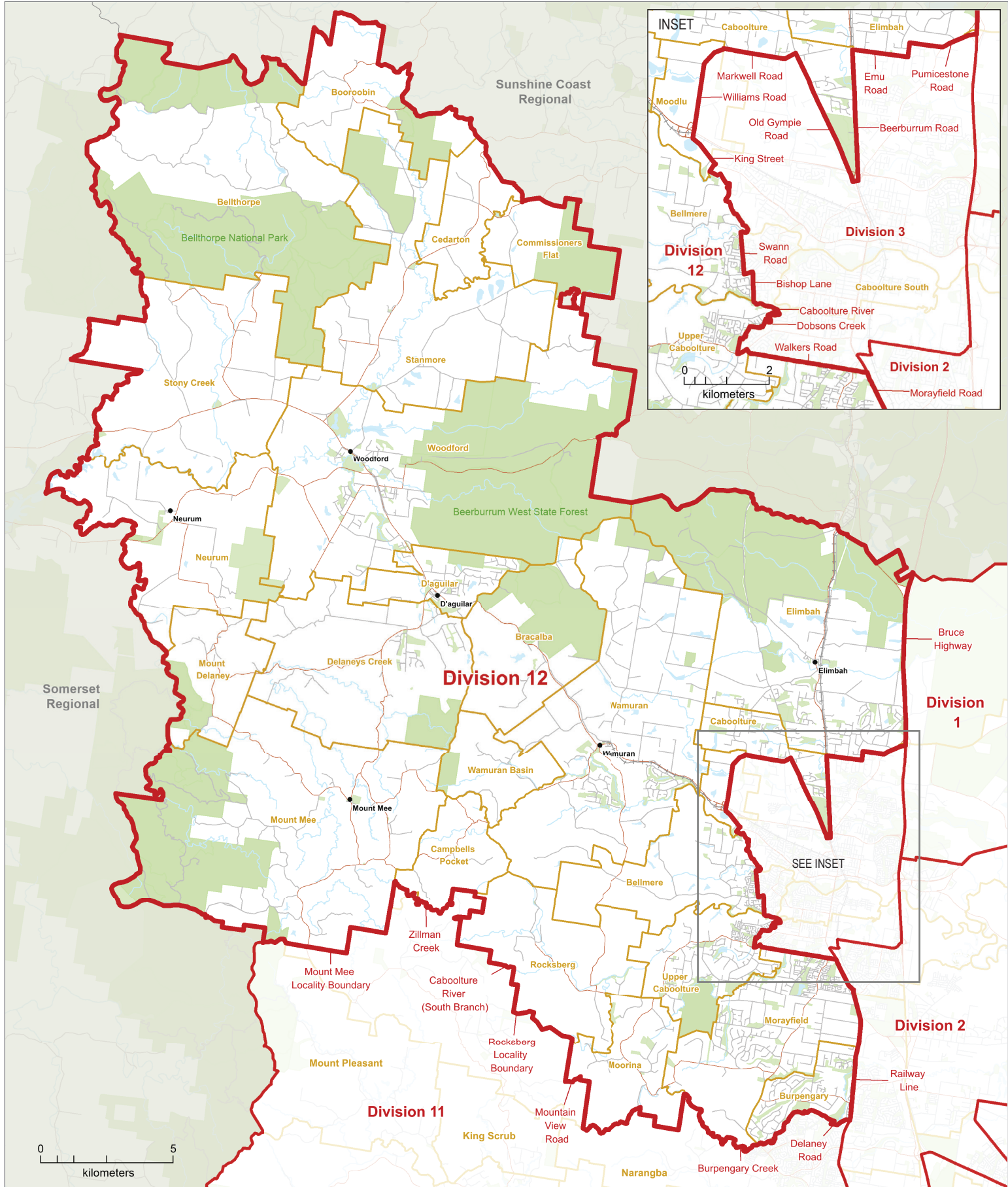
LEGEND

	Proposed Division Boundary		Reserve, Parkland
	Proposed Adjacent Division		Waterbody
	Locality Boundary		Railway
	Adjacent Council		Main Road
			Wetland

This product was created using datasets from various authoritative sources, and is intended as a guide only to display proposed divisional boundaries.

The digital GIS data is available FREE to download from Queensland Spatial Catalogue, or Qspatial, at <http://qldspatial.information.qld.gov.au>

© The State of Queensland - 2019 (Department of Natural Resources, Mines and Energy)
 © Electoral Commission of Queensland 2019 Creative Commons (CC BY)



2019
Local Government Area
Divisional Boundary Review

PROPOSED DIVISIONAL BOUNDARIES

MORETON BAY REGIONAL
Division 12



LEGEND

- | | | | |
|--|----------------------------|--|-------------------|
| | Proposed Division Boundary | | Reserve, Parkland |
| | Proposed Adjacent Division | | Waterbody |
| | Locality Boundary | | Railway |
| | Adjacent Council | | Main Road |
| | | | Wetland |

This product was created using datasets from various authoritative sources, and is intended as a guide only to display proposed divisional boundaries.

The digital GIS data is available FREE to download from Queensland Spatial Catalogue, or Qspatial, at <http://qldspatial.information.qld.gov.au>

© The State of Queensland - 2019 (Department of Natural Resources, Mines and Energy)
 © Electoral Commission of Queensland 2019 Creative Commons (CC BY)

LOCAL GOVERNMENT CHANGE COMMISSION

W: www.ecq.qld.gov.au

E: LGCCsubmissions@ecq.qld.gov.au

T: 1300 881 665

P: Local Government Change Commission
GPO Box 1393
BRISBANE QLD 4001



**Electoral
Commission**
QUEENSLAND