

# Review of Divisional Boundaries

---

**2019 PROPOSED DETERMINATION**  
WHITSUNDAY REGIONAL COUNCIL

## Contents

INTRODUCTION .....	2
Endorsement of proposal .....	2
THE REVIEW PROCESS .....	3
Determining the quota .....	3
EXISTING BOUNDARIES & ENROLMENT .....	4
Table 1 – Current and Projected Enrolment Quota .....	4
Table 2 – Summary of Enrolment for the Existing Divisions .....	4
PUBLIC SUGGESTIONS .....	5
THE PROPOSED BOUNDARIES .....	7
Table 3 – Summary of Enrolment for the Proposed Divisions .....	7
Division 1 .....	7
Division 2 .....	8
Division 3 .....	8
Division 4 .....	8
Division 5 .....	9
Division 6 .....	9
COMMENTS ON THE PROPOSAL INVITED .....	10
FINALISING THE REVIEW .....	10
IMPLEMENTATION .....	10

<b>APPENDIX A</b>	Minister’s Referral
<b>APPENDIX B</b>	Suggestions Notice & Public Submissions
<b>APPENDIX C</b>	Maps of Proposed Divisions

## INTRODUCTION

The *Local Government Act 2009 (Qld)* (the Act) provides for a Local Government Change Commission (Change Commission). The Change Commission is responsible for periodically reviewing the internal boundaries of divided councils so that each division has relatively the same number of enrolled voters. This upholds the key democratic principle of 'one vote, one value', by ensuring each person's vote carries the same weight.

On 2 April 2019, the Minister for Local Government, Minister for Racing and Minister for Multicultural Affairs, The Honourable Stirling Hinchliffe MP referred a divisional boundary review of the Whitsunday Regional Council (see Appendix A).

The Change Commission for this review consists of:

- Mr Pat Vidgen, Electoral Commissioner;
- Mr Wade Lewis, Casual Commissioner; and
- Mr Peter McGraw, Casual Commissioner.

The casual commissioners were appointed by the Governor in Council on 1 November 2018.

## Endorsement of proposal

This report outlines the Change Commission's proposed boundaries for the electoral divisions of the Whitsunday Regional Council.



**Pat Vidgen PSM**  
Electoral Commissioner



**Wade Lewis**  
Casual Commissioner



**Peter McGraw**  
Casual Commissioner

## THE REVIEW PROCESS

The Change Commission must ensure each division of the Council has a reasonable proportion of enrolled voters, herein referred to as 'quota'. Where possible, community interests, public submissions and easy-to-identify boundaries are also considered.

Assessments are conducted in any way the Change Commission deems appropriate, unless the Minister has provided specific directions.

The process for the divisional boundary review of Whitsunday is as follows:

1. Invite suggestions
2. Publish the Change Commission's proposal
3. Invite comments on the proposal
4. Publish the Change Commission's final determination report
5. Final determination report provided to the Minister for Local Government, for implementation by the Governor in Council
6. New boundaries come into effect at the 2020 Local Government Quadrennial Election

### Determining the quota

A quota is determined by dividing the total number of enrolled voters by the number of councillors (other than the mayor), plus or minus 10%. The Change Commission also considers projected enrolment, so the divisions remain in quota for as long as possible.

Current enrolment data has been sourced from Queensland's electoral roll and projected enrolment data from the Queensland Government Statistician's Office of Queensland Treasury. Projections are based on the timing of future local government quadrennial elections.

Enrolment information is organised around 'Statistical Areas Level 1 (SA1)'. SA1s are geographical units used by the Australian Bureau of Statistics (ABS) for the release of census data. According to the ABS most SA1s have a population of between 200 to 800 persons with an average population of approximately 400 people.

Current and projected enrolment data are available for download on the Whitsunday Regional Council webpage on the Electoral Commission of Queensland's (ECQ) website.

## EXISTING BOUNDARIES & ENROLMENT

The Whitsunday Regional Council has 22,161 voters and is divided into six single-member electoral divisions plus a mayor. Table 1 shows the Council's current enrolment quota as at 31 January 2019 and the quota projected for 31 March 2024.

Table 2 shows the current and projected enrolment for the Council's existing divisional boundaries. As at 31 January 2019, Division 2 has exceeded the enrolment quota and in 2024, Division 2 is projected to be further out of quota.

Table 1 – Current and Projected Enrolment Quota		
	31 January 2019	31 March 2024
Number of divisions	6	6
Enrolment	22,161	23,062
Average enrolment per division	3,694	3,844
Average enrolment (+10%) per division	4,063	4,228
Average Enrolment (-10%) per division	3,324	3,460

Table 2 – Summary of Enrolment for the Existing Divisions				
Division	Enrolment as at 31/01/2019	(%) Deviation from Average Enrolment	Projected Enrolment as at 31/03/2024	(%) Deviation from Average Enrolment
Division 1	3,673	-0.56	4,047	5.29
Division 2	4,229	<b>14.5</b>	4,484	<b>16.66</b>
Division 3	3,468	-6.11	3,652	-4.99
Division 4	3,716	0.61	3,691	-3.97
Division 5	3,464	-6.21	3,518	-8.47
Division 6	3,611	-2.23	3,670	-4.52

## PUBLIC SUGGESTIONS

The Change Commission sought public suggestions to assist in developing its proposal. Advertisements were placed in The Courier-Mail, the Whitsunday Times and on the ECQ's website and social media.

Suggestions were invited from 27 April to 5pm 13 May 2019. Eight submissions were received and are available to view at Appendix B.

The Whitsunday Regional Council recommended the Change Commission resolve the enrolment imbalance in Division 2 by reviewing the boundary between Divisions 2 and 3. It was suggested that the SA1 3136105 (Brandy Creek area) be removed from Division 2 and united within Division 3 and the Whitsunday Acres estate section of SA1 3135907 (Cannon Valley area) also be relocated into Division 3. The Council suggested the boundary follow Orchid Road and Shute Harbour Road.

The Change Commission supported the need to reduce enrolment growth in this area, however instead of moving the suggested SA1s to Division 3, it is proposed that Brandy Creek and the majority of Cannon Valley be transferred into Division 5. In doing so, this reduces enrolment pressure in Division 2 and enables Division 3 to expand south-west to incorporate several localities from the east of Division 4 as requested in a number of public suggestions.

Seven submissions raised concerns regarding the boundaries of Division 4, noting that three of these submitters did so by endorsing the contents contained in Suggestion 4. The key themes from these submissions is that Division 4 is too large, contains a variety of different communities with diverse needs, that there are accessibility and transport link issues and that this has culminated in representation problems. The Change Commission has sought to address these submissions by proposing to transfer the eastern portion of Division 4 into Divisions 2, 3 and 5, so that Division 4's eastern boundary follows the Bogie locality boundary.

Having transferred several localities in the east of Division 4, the Change Commission has proposed expanding the northern boundary to take in electors in the Gumlu, Guthalungra and part of the Bowen locality. As a result, the Change Commission was unable to accommodate one submitter's request to align the Collinsville area with Divisions 5 or 6.

Suggestion 4, which was endorsed by three other submitters, suggested several other changes to the Council's divisions. The Change Commission has implemented many of the suggested boundaries, proposing some additional or alternative modifications in some places. The Change Commission's response to the suggested changes are discussed below:

- That no change be made to Division 1. As enrolment is stable in Division 1, the Change Commission supported this recommendation, however has proposed a single change that does not impact any electors but does unite similar geographic areas. It is proposed that the Cape Conway locality (Conway National Park and State Forest) be transferred from Division 2 into Division 1.

- Transfer several SA1s from Division 4 into Division 3 where the residents have better connectivity and add Brandy Creek into Division 3. The Change Commission has partially adopted this suggestion, transferring several localities from Division 4 to Division 3. The Brandy Creek locality has however been placed in the proposed Division 5.
- Expand Division 5 to follow the Bruce Highway, gaining parts of Bowen Bay, Cape Gloucester, Hideaway Bay, Dingo Beach and growth areas at Woodwark, Riordonvale, Strathdickie and Myrtlevalle. The Change Commission has again implemented a number of these suggested changes, with some modifications to take in additional localities in the south-east and placing Woodwark in Division 2. In doing so, this has enabled Division 4 to contract in the east and has also helped to take some of the projected growth areas out of Division 2.
- Remove the northern reach and make Division 6 a solely Bowen based division. The Change Commission supported this idea in principle, however has proposed different boundaries to the submitter by contracting Division 6 to the urban centre of Bowen.

## THE PROPOSED BOUNDARIES

The proposed boundaries for the Whitsunday Regional Council are detailed below. They bring enrolment in each division into quota, whilst also catering for the significant growth projected in certain parts of the region. The Change Commission has made a concerted effort to accommodate public feedback and to unite entire suburbs within individual divisions where possible.

Table 3 shows the current and projected enrolment for the proposed electoral divisions. Maps of the proposed divisions are in Appendix C and interactive maps are on the ECQ website.

Table 3 – Summary of Enrolment for the Proposed Divisions				
Division	Enrolment as at 31/01/2019	(%) Deviation from Average Enrolment	Projected Enrolment as at 31/03/2024	(%) Deviation from Average Enrolment
Division 1	3,673	-0.56	4,047	5.29
Division 2	3,654	-1.07	3,796	-1.24
Division 3	3,482	-5.73	3,656	-4.88
Division 4	3,848	4.18	3,697	-3.82
Division 5	3,691	-0.07	3,925	2.12
Division 6	3,813	3.24	3,941	2.53

### Division 1

As enrolment is projected to be stable within Division 1, the Change Commission has retained the existing boundaries with one exception. It is proposed that the Cape Conway locality (Conway State Forest and National Park) be transferred from Division 2 into Division 1.

As Division 1 encompasses most of the Council's ocean and island areas, it seemed appropriate that the Cape Conway area, which also borders the coastline, be united in Division 1. This change does not impact any voters.

The proposed Division has 3,673 voters which is -0.56% below average and is predicted to have 4,047 voters by 2024 which would be 5.29% above average.

## Division 2

Division 2 is currently out of quota at 14.5% and is projected to be further out of quota by 2024. To reduce enrolment and projected growth in this Division, the southern and south-eastern boundary has been contracted. An additional change that does not impact electors has also been proposed, with the Cape Conway locality being transferred into Division 1. The proposed Division contains the entire Woodward locality, its existing portion of Cannonvale, and a smaller portion of the Cannon Valley suburb.

The Change Commission proposes the following changes. The Division:

- a. Gains the remainder of Woodward from Division 4;
- b. Transfers the Cape Conway locality (State Forest and National Park) to Division 1; and
- c. Transfers Brandy Creek and a portion of Cannon Valley to Division 5.

The proposed Division has 3,654 voters which is -1.07% below average and is predicted to have 3,796 voters by 2024 which would be -1.24% below average.

## Division 3

Division 3 has expanded south and also west to include a number of localities from Division 4. The Change Commission received several suggestions regarding Division 4, with a couple recommending the eastern areas move into Division 3 where they have more connectivity.

- a. Gains the remainder of Proserpine and the entire Crystal Brook, Lake Proserpine, Dittmer, Kelsey Creek, Silver Creek, Pauls Pocket, Andromache, Goorganga Creek, Thoopara, Gunyarra, Goorganga Plains and Lethebrook suburbs from Division 4; and
- b. Transfers Mount Julian, Mount Marlow and its portion of Cannon Valley to Division 5.

The proposed Division has 3,482 voters which is -5.73% below average and is predicted to have 3,656 voters by 2024 which would be -4.88% below average.

## Division 4

Several suggestions discussed issues with the size, geography and accessibility within Division 4. The Change Commission has sought to address these submissions and has contracted the eastern boundary to follow the Bogie locality boundary. In doing so, it was necessary to increase enrolment by expanding north to gain suburbs from Division 6.

The Change Commission proposes the following changes. The Division:

- a. Gains the remainder of Bogie, part of Bowen and the entire Gumlu and Guthalungra localities from Division 6;
- b. Transfer the remainder of Woodward to Division 2;
- c. Transfers the remainder of Proserpine and the entire Crystal Brook, Lake Proserpine, Dittmer, Kelsey Creek, Silver Creek, Pauls Pocket, Andromache, Goorganga Creek, Thoopara, Gunyarra, Goorganga Plains and Lethebrook suburbs to Division 3; and
- d. Transfers Hideaway Bay, Dingo Beach, Cape Gloucester, Gregory River, Riordanvale, Sugarloaf, Strathdickie, Myrtlevalle, Mount Pluto and Foxdale to Division 5.

The proposed Division has 3,848 voters which is 4.18% above average and is predicted to have 3,697 voters by 2024 which would be -3.82% below average.

## Division 5

Several boundary changes have been proposed for Division 5, to increase its enrolment and to accommodate changes to its neighbouring divisions, most notably Divisions 4 and 6. The boundaries adopt most of the changes proposed within Suggestion 4, 5, 6 and 7, by extending the Division east to take in parts of the existing Division 2, 3 and 4.

The Change Commission proposes the following changes. The Division:

- a. Gains Brandy Creek and part of Cannon Valley from Division 2;
- b. Gains Mount Julian, Mount Marlow and part of Cannon Valley from Division 3;
- c. Gains Hideaway Bay, Dingo Beach, Cape Gloucester, Gregory River, Riordanvale, Sugarloaf, Strathdickie, Myrtlevale, Mount Pluto and Foxdale from Division 4; and
- d. Transfers a portion of the Bowen locality to Divisions 4 and 6.

The proposed Division has 3,691 voters which is -0.07% below average and is predicted to have 3,925 voters by 2024 which would be 2.12% above average.

## Division 6

It is proposed that this Division contract to contain the majority of Bowen's urban centre. It was not possible from an enrolment perspective to unite the entire Bowen locality, or urban areas within one division.

In doing so, Division 6's enrolment has increased, and it has also enabled the Change Commission to address public suggestions to contract Division 4 in the east and instead expand it north to gain electors from Division 6.

The Change Commission proposes the following changes. The Division:

- a. Gains a portion of the Bowen locality from Division 5; and
- b. Transfers part of Bowen, the remainder of Bogie and the entire Guthalungra and Gumlu localities to Division 4.

The proposed Division has 3,813 voters which is 3.24% above average and is predicted to have 3,941 voters by 2024 which would be 2.53% above average.

## COMMENTS ON THE PROPOSAL INVITED

Comments on this proposal are invited until 5pm, 30 September 2019 and can be lodged through:

**Online Form**

<https://ecq.qld.gov.au/lgr/whitsunday>

**Email**

[LGCCsubmissions@ecq.qld.gov.au](mailto:LGCCsubmissions@ecq.qld.gov.au)

**Personal Delivery**

Electoral Commission of Queensland  
Level 20, 1 Eagle Street  
BRISBANE QLD 4000

**Post**

Local Government Change Commission  
GPO Box 1393  
BRISBANE QLD 4001

It is recommended that those submitting comments:

- consider the enrolment requirements outlined in the Act and in this report;
- clearly state which division/s your comment relates to;
- provide supporting information for why you support or oppose a proposed boundary change or public submission; and
- if you oppose a change, provide alternative boundary suggestions and reasoning.

## FINALISING THE REVIEW

After reviewing the public comments on the proposal, the Change Commission will make a final determination on the Council's divisional boundaries.

The results of a Change Commission review must be provided to the Minister for Local Government. A notice of results is published in a local newspaper, the Queensland Government Gazette and on the ECQ website.

A decision of the Change Commission is not subject to appeal.

## IMPLEMENTATION

A local government change can only be implemented by the Governor in Council under a regulation.

The regulation may provide for anything that is necessary or convenient to facilitate the change.

# **APPENDIX A**

## **Minister's Referral**



Minister for Local Government,  
Minister for Racing and  
Minister for Multicultural Affairs

Our ref: MC19/1176

1 William Street  
Brisbane Queensland 4000  
PO Box 15009  
City East Queensland 4002  
**Telephone +61 7 3719 7560**  
**Email** [lgrma@ministerial.qld.gov.au](mailto:lgrma@ministerial.qld.gov.au)  
**Website** [www.dlgrma.qld.gov.au](http://www.dlgrma.qld.gov.au)

ABN 65 959 415 158

02 APR 2019

Mr Pat Vidgen PSM  
Electoral Commissioner  
Electoral Commission Queensland  
GPO Box 1393  
BRISBANE QLD 4001

Dear Pat

I am writing to you in relation to a Local Government electoral review that was undertaken by the Whitsunday Regional Council in preparation for the 2020 Local Government quadrennial elections.

I have received correspondence from Mr Bruce Davidson, Acting Chief Executive Officer of the Council dated 1 March 2019 advising of the results of the review, including that the proportion of electors in Division 2 is out of the quota of a reasonable proportion of electors as required by the *Local Government Act 2009* (the Act).

Mr Davidson also advised that as part of any divisional boundary review, the Local Government Change Commission (the Change Commission) consider resolving the imbalance of electors by reviewing the boundary between Division 2 and Division 3.

I am advised there are several planned developments in the Whitsunday Shores (Bowen – Division 6) and Whitsunday Green/Sanctuary Living (Cannonvale – Division 2) areas. However, based on the current growth rate of the area it is highly unlikely that planned developments will be completed in full by 2024.

As you are aware, section 18 of the Act provides that only I may apply to the Change Commission for an assessment of a proposed Local Government change. Further, under section 19 of the Act, the Change Commission must consider whether the Local Government change is consistent with the Act and must consider my views on any proposed changes.

Having examined the Council's submission, I consider it appropriate to refer the matter to you for independent assessment and determination by the Change Commission. I recommend that in assessing any changes to divisional boundaries, the Change Commission consider the need to balance the proportions of electors in Division 2 and Division 3, and the potential impacts on the proportions of electors in Division 2 and Division 6 arising from the planned developments described above.

I have asked Mr Daniel Westall, Manager Governance, Local Government Division in the Department of Local Government, Racing and Multicultural Affairs to assist you with any further queries. You may wish to contact Mr Westall on [REDACTED] or by email at [REDACTED].

Yours sincerely

A handwritten signature in blue ink, appearing to read 'Stirling', with a long horizontal flourish extending to the right.

**STIRLING HINCHLIFFE MP**  
**Minister for Local Government,**  
**Minister for Racing and**  
**Minister for Multicultural Affairs**

Enc

# **APPENDIX B**

## **Suggestions Notice & Public Submissions**

# LOCAL GOVERNMENT CHANGE COMMISSION

## Divisional Boundary Review of Whitsunday Regional Council

The Whitsunday Regional Council has advised its electoral divisions no longer meet the voter enrolment requirements set down in the *Local Government Act 2009*. As a result, the Minister for Local Government has referred the matter to the Change Commission for independent assessment.

### Enrolment Requirements

Each division of the Council is required to have relatively the same number of voters (quota) to ensure each person's vote has the same value. The quota for each division of the Whitsunday Regional local government area is 3,694 with a lower limit of 3,324 (-10%) and an upper limit of 4,063 (+10%).

For more information and enrolment statistics please see the Electoral Commission of Queensland's website: [www.ecq.qld.gov.au/electoral-boundaries/lg-reviews/DBRs](http://www.ecq.qld.gov.au/electoral-boundaries/lg-reviews/DBRs) or phone 1300 881 665.

### INVITATION FOR WRITTEN SUGGESTIONS

The Change Commission now invites suggestions regarding the divisional boundaries for the Whitsunday Regional Council. Submissions will be accepted until 5pm on 13 May 2019. Late submissions cannot be considered.

### Submissions can be lodged through:

- **Online Form (*preferred*)**

[www.ecq.qld.gov.au/electoral-boundaries/lg-reviews/DBRs](http://www.ecq.qld.gov.au/electoral-boundaries/lg-reviews/DBRs)

- **Email**

[LGCCsubmissions@ecq.qld.gov.au](mailto:LGCCsubmissions@ecq.qld.gov.au)

- **Personal Delivery** (Mon - Fri 9.00am - 5.00pm)

Electoral Commission of Queensland  
Level 20, 1 Eagle Street  
BRISBANE QLD 4000

- **Post**

Local Government Change Commission  
GPO Box 1393  
BRISBANE QLD 4001

**Submissions will be made available for public inspection.** To discuss any privacy concerns, please phone 1300 881 665.

Pat Vidgen PSM

**Electoral Commissioner**

# **Divisional Boundary Review of Whitsunday Regional Council**

## **List of Public Suggestions**

<b>Suggestion</b>	<b>Name / Organisation</b>
<b>1</b>	Whitsunday Regional Council
<b>1a</b>	Whitsunday Regional Council
<b>2</b>	D Wilkins
<b>3</b>	Gary Simpson
<b>4</b>	Mark Yore
<b>5</b>	John Collins
<b>6</b>	Jill Collins
<b>7</b>	Tracey Cameron
<b>8</b>	Cliff Hill

**Correspondence:**

Chief Executive Officer,  
Whitsunday Regional Council,  
PO Box 104, Proserpine QLD 4800  
P: 1300 WRC QLD (1300 972 753)  
F: (07) 4945 0222  
E: [info@whitsundayrc.qld.gov.au](mailto:info@whitsundayrc.qld.gov.au)  
[www.whitsundayrc.qld.gov.au](http://www.whitsundayrc.qld.gov.au)

For further information please contact: Paul Fendley, Chief Staff Officer  
Direct dial no.: [REDACTED]

1 March 2019

Electoral Commissioner Pat Vidgen PSM  
Electoral Commission of Queensland  
GPO Box 1393  
BRISBANE QLD 4001

By email: [ecq@ecq.qld.gov.au](mailto:ecq@ecq.qld.gov.au)

Dear Electoral Commissioner

**RE: Review of Divisions of Local Government Area**

In accordance with Section 16 of the Local Government Act 2009, I wish to advise that Council has reviewed whether each of its divisions has a reasonable proportion of electors.

The results of this review are presented in the following table and are accurate as at 31 January 2019:

Division	Electors	Average Enrolment	Lower Limit	Upper Limit	Variation from Average Enrolment	Variation %	Excess	Quota In/Out
1	3673	3693.5	3324	4063	-20.5	-0.56%		In
2	4229	3693.5	3324	4063	+535.5	14.5%	166	Out
3	3468	3693.5	3324	4063	-225.5	-6.11%		In
4	3716	3693.5	3324	4063	+22.5	0.61%		In
5	3464	3693.5	3324	4063	-229.5	-6.21%		In
6	3611	3693.5	3324	4063	-82.5	-2.23%		In

Council considered these results at its 27 February 2019 Ordinary Meeting and resolved as follows:

*'...to authorise the Acting Chief Executive Officer or their delegate to write to the Electoral Commissioner of Queensland and the Minister for Local Government as follows:*

- 1. Providing the results of Council's review of its divisions, in accordance with Section 16 of the Local Government Act 2009;*
- 2. Requesting that as part of any divisional boundary review, the Local Government Change Commission maintain communities of interest throughout the region; and,*

Bowen  
Cnr Herbert & Powell Streets  
Bowen QLD 4805

Proserpine  
83-85 Main Street  
Proserpine QLD 4800

Collinsville  
Cnr Stanley & Conway Streets  
Collinsville QLD 4804

Cannonvale  
Shop 23, Whitsunday Plaza  
Shute Harbour Road, Cannonvale QLD 4802



**Correspondence:**

Chief Executive Officer,  
Whitsunday Regional Council,  
PO Box 104, Proserpine QLD 4800  
P: 1300 WRC QLD (1300 972 753)  
F: (07) 4945 0222  
E: [info@whitsundayrc.qld.gov.au](mailto:info@whitsundayrc.qld.gov.au)  
[www.whitsundayrc.qld.gov.au](http://www.whitsundayrc.qld.gov.au)

3. *Advising that as part of any divisional boundary review, the Local Government Change Commission consider resolving the imbalance of electors by reviewing the boundary between Division 2 and Division 3 at ABS Statistical Areas 3135907 and 3136105, as highlighted in attachment 3 of this report.*

With regards to point 3 of the resolution, please find enclosed a map which highlights the boundary between Council's Division 2 and Division 3.

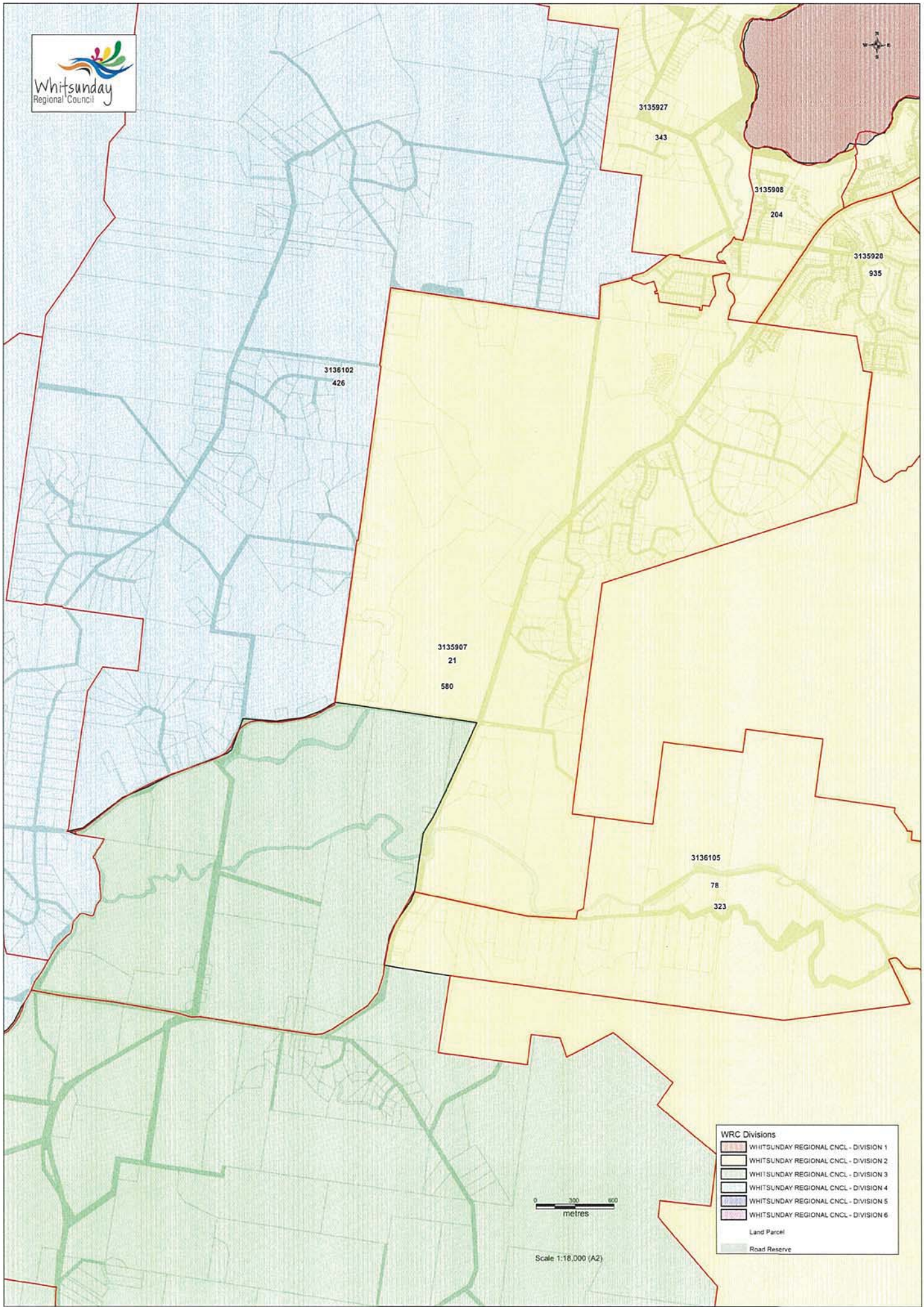
Please do not hesitate to contact Paul Fendley, Chief Staff Officer on (07) [REDACTED] or [REDACTED] if you have any further questions regarding the above.

Yours faithfully,

[REDACTED]

Bruce Davidson  
Acting Chief Executive Officer

*Enc. Map highlighting boundary between Whitsunday Regional Council Division 2 and Division 3*



3136102  
426

3135927

343

3135908

204

3135928

935

3135907  
21  
580

3136105

78

323

**WRC Divisions**

- WHITSUNDAY REGIONAL CNCL - DIVISION 1
- WHITSUNDAY REGIONAL CNCL - DIVISION 2
- WHITSUNDAY REGIONAL CNCL - DIVISION 3
- WHITSUNDAY REGIONAL CNCL - DIVISION 4
- WHITSUNDAY REGIONAL CNCL - DIVISION 5
- WHITSUNDAY REGIONAL CNCL - DIVISION 6

**Land Parcel**

**Road Reserve**

0 300 600  
metres

Scale 1:16,000 (A2)



For further information, please contact: Paul Fendley, Chief Staff Officer  
Direct dial no.: (07) 4945 0644

**Correspondence:**

Chief Executive Officer,  
Whitsunday Regional Council,  
PO Box 104, Proserpine QLD 4800  
P: 1300 WRC QLD (1300 972 753)  
F: (07) 4945 0222  
E: [info@whitsundayrc.qld.gov.au](mailto:info@whitsundayrc.qld.gov.au)  
[www.whitsundayrc.qld.gov.au](http://www.whitsundayrc.qld.gov.au)  
ABN 63 291 580 128

13 May 2019

Local Government Change Commission  
GPO Box 1393  
BRISBANE QLD 4001

**By email: [LGCCsubmissions@ecq.qld.gov.au](mailto:LGCCsubmissions@ecq.qld.gov.au)**

Dear Local Government Change Commission,

**RE: Submission to the Local Government Change Commission on Electoral Divisions**

Further to our correspondence of 1 March 2019, regarding Council's resolution of 27 February 2019

*'... the Acting Chief Executive Officer or their delegate to write to the Electoral Commissioner of Queensland and the Minister for Local Government as follows:*

- 1. Providing the results of Council's review of its divisions, in accordance with Section 16 of the Local Government Act 2009;*
- 2. Requesting that as part of any divisional boundary review, the Local Government Change Commission maintain communities of interest throughout the region; and,*
- 3. Advising that as part of any divisional boundary review, the Local Government Change Commission consider resolving the imbalance of electors by reviewing the boundary between Division 2 and Division 3 at ABS Statistical Areas 3135907 and 3136105, as highlighted in attachment 3 of this report'*

Please find attached a submission from Council, expanding on the advice contained at point 3 of the resolution.

Yours faithfully

  
Jason Raiteri  
Acting Chief Executive Officer



**Submission to the Local  
Government Change Commission  
on Electoral Divisions**

**May 2019**

## Background

Section 16 of the Local Government Act 2009 (LGA) required Council to, no later than 1 March 2019 (the year before the year of the next quadrennial elections), review whether each of its divisions had a reasonable proportion of electors and give the Electoral Commissioner and the Minister notice of the results of this review.

Council conducted this review and reported the following figures, accurate as at 31 January 2019, to Council at their 27 February 2019 Ordinary Meeting:

Division	Electors	Average Enrolment	Quota	Lower Limit	Upper Limit	Variation from Average Enrolment	Variation%	Excess	Quota In/Out
1	3673	3693.5	10%	3324	4063	-20.5	-0.56%		In
2	4229	3693.5	10%	3324	4063	+535.5	14.5%	166	Out
3	3468	3693.5	10%	3324	4063	-225.5	-6.11%		In
4	3716	3693.5	10%	3324	4063	+22.5	0.61%		In
5	3464	3693.5	10%	3324	4063	-229.5	-6.21%		In
6	3611	3693.5	10%	3324	4063	-82.5	-2.23%		In

Council subsequently resolved as follows:

### **Council Resolution 2019/02/27.07**

***That Council resolves to authorise the Acting Chief Executive Officer or their delegate to write to the Electoral Commissioner of Queensland and the Minister for Local Government as follows:***

- 1. Providing the results of Council's review of its divisions, in accordance with Section 16 of the Local Government Act 2009;***
- 2. Requesting that as part of any divisional boundary review, the Local Government Change Commission maintain communities of interest throughout the region; and,***
- 3. Advising that as part of any divisional boundary review, the Local Government Change Commission consider resolving the imbalance of electors by reviewing the boundary between Division 2 and Division 3 at ABS Statistical Areas 3135907 and 3136105, as highlighted in attachment 3 of this report.***

In compliance with Council resolution 2019/02/27.07 and Section 16 of the Local Government Act, Council informed the Minister for Local Government and the Electoral Commissioner of Queensland of the results of the review on 1 March 2019.

The Electoral Commissioner of Queensland Pat Vidgen PSM acknowledged Council's correspondence on 5 March 2019, noting that Division 2 does not meet the 'reasonable proportion of electors' (quota) required by the Act. The Electoral Commissioner further noted that Council had highlighted the boundary between Division 2 and Division 3.

The Minister for Local Government the Honourable Stirling Hinchcliffe MP informed Council on 2 April 2019 that in accordance with Section 18 of the Local Government Act 2009, he had referred the matter to the Local Government Change Commission for independent assessment and determination.

Council were advised by the Electoral Commission of Queensland on 15 April 2019 that the Change Commission would commence the divisional boundary review for the Whitsunday region local government area. This correspondence included the proposed timeframe for receipt of public submissions and the overall process.

In accordance with the consultation commenced by the Change Commission, Whitsunday Regional Council makes this submission to address the issue of the out of tolerance number of electors in Division 2 of the Whitsunday Regional Council Local Government Area.

## Whitsunday Regional Council Overview

Renowned for its relaxed lifestyle, the region boasts beaches, rainforests and large tracts of national parkland, encompassing a total land area of 23,682 square kilometres.

Airlie Beach, Bowen, Cannonvale, Collinsville and Proserpine are the main townships with numerous rural and coastal communities and residential areas scattered throughout the region.

While the region is rural and coastal in its nature, residents and visitors alike enjoy access to good community infrastructure such as transportation, hospitals, educational facilities, telecommunications, power, water and sewer utilities as well as contemporary facilities including museums, art galleries, cafes, hotels and restaurants, and other entertainment facilities.

### Population

The Whitsunday Region is home to approximately 35,000 permanent residents and attracts 786,000 visitors each year. Due to the strength of the local economy, the Queensland Government Statistician's Office projected in 2018 that the Whitsunday Local Government Area will have a population between 39,483 and 52,987 by 2041.

### Regional Growth

As the gateway to the Great Barrier Reef and the magnificent 74 Whitsunday Islands, the Whitsunday region has one of the fastest growing populations in Queensland. Boasting a strong and diverse economy driven by the agriculture, construction, mining and tourism industries; the Whitsunday region has the potential to become the economic powerhouse of North Queensland.

### Local Economy

The region is economically resilient with the Gross Regional Product of the Whitsunday LGA estimated at approximately \$2.489 billion. With over \$4.7 billion in major projects planned or under construction, the region is expecting rapid growth over the next 10 years.

### Vision

Natural beauty, global attraction. We have it all.

### Mission

We are committed to providing the Whitsunday region with strong and responsive local government and achieving an innovative, efficient and sustainable organisation.

### Values

Whitsunday Regional Council's culture is driven through the following values:

**Accountability** - being open, diligent and ethical in our decisions and actions.

**Unity** - Working together to get things done.

**Trust** - in our team mates, our service partners and our customers.

**Community** - building pride, strength and confidence amongst our region, residents and ratepayers.

**Continuous Improvement** - always looking for solutions and ways to do things better.

## Submission

Division 2 of the Whitsunday Regional Council Local Government Area is currently out of quota by approximately 4.5% and Division 3 is close to the lower limit of the 10 per cent variance range.

It is noted that Division 2 was also identified as being above quota during the 2015 divisional boundary review. The Final Determination on this review prepared by the Change Commission in October 2015 states that of the 1712 responses to its call for suggestions in May and June 2015, more than 1500 of those submissions were signed form letters recommending an alternative boundary change between Divisions 2 and 3. As such, the divisional boundary between Divisions 2 and 3 was realigned for the 2016 quadrennial local government elections.

In order to ensure divisional boundaries are based on residents' common interest and continuous population growth in this part of the region is considered, Council submits that the boundary between Divisions 2 and 3 be realigned again.

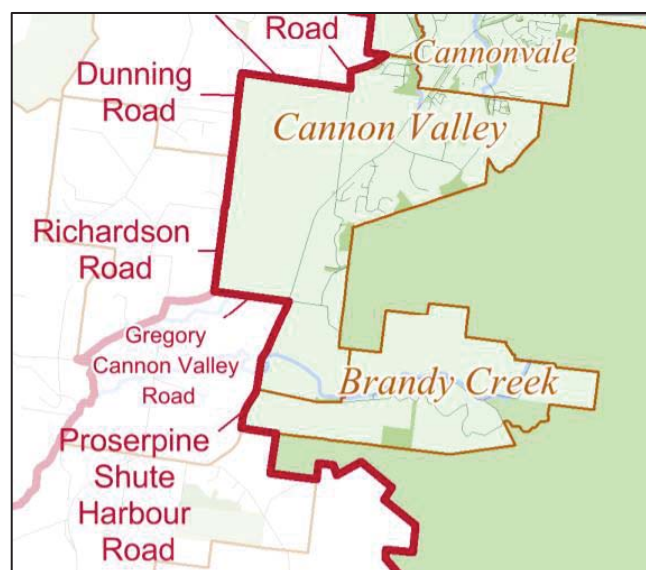
Enrolment by Statistical Area 1 for the Whitsunday Regional Council Local Government Area at 31 January 2019 notes that SA1 3135907 and 3136105 are split across Division 2 and 3. Of the 399 electors in SA1 3136105, only 76 of these individuals reside in Division 2. Additionally, of the 609 electors in SA1 3135907, only 21 of these individuals reside Division 3.

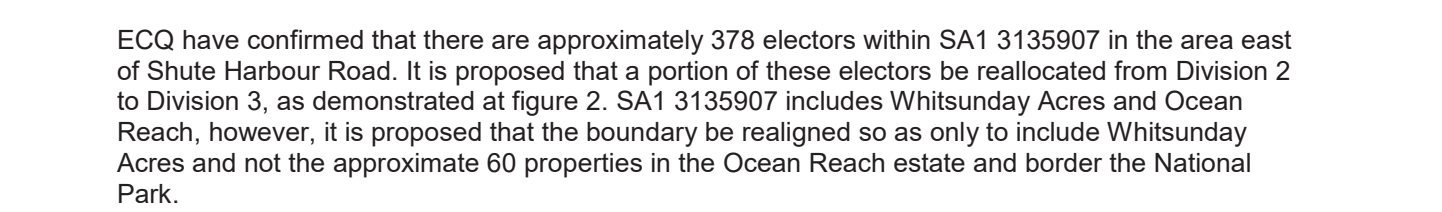
Although Division 2 is only in excess of 166 electors above the upper limit, it is 535.5 from the average enrolment figure. In Division 3, the variation is 225.5 below the average enrolment figure. Therefore, Council submits that a swing of approximately 375 electors from Division 2 to Division 3 would result in both Divisions being roughly 4% above the average enrolment figure (approximately +147 electors in Division 2 and +174 electors in Division 3), bringing both Divisions closer to the average amount.

Council notes that the total number of electors in SA1 3135907 and 3136105 is considerably higher than the required amount to address the imbalance. As such, Council submits that the Change Commission consider realigning the boundary so that the entirety of SA1 3136105 is within Division 3 (meaning a shift of 76 electors to the Division) and only part of SA1 3135907 is reallocated.

As stated above, there are a total of 609 electors in SA1 3135907 and 588 of these individuals are currently in Division 2. If the boundary was to be realigned so that the remaining 76 electors in SA1 3136105 were included in Division 3, the boundary would only require further realignment so that an additional approximate amount of 299 of the 588 electors in SA1 3135907 would also be required to shift.

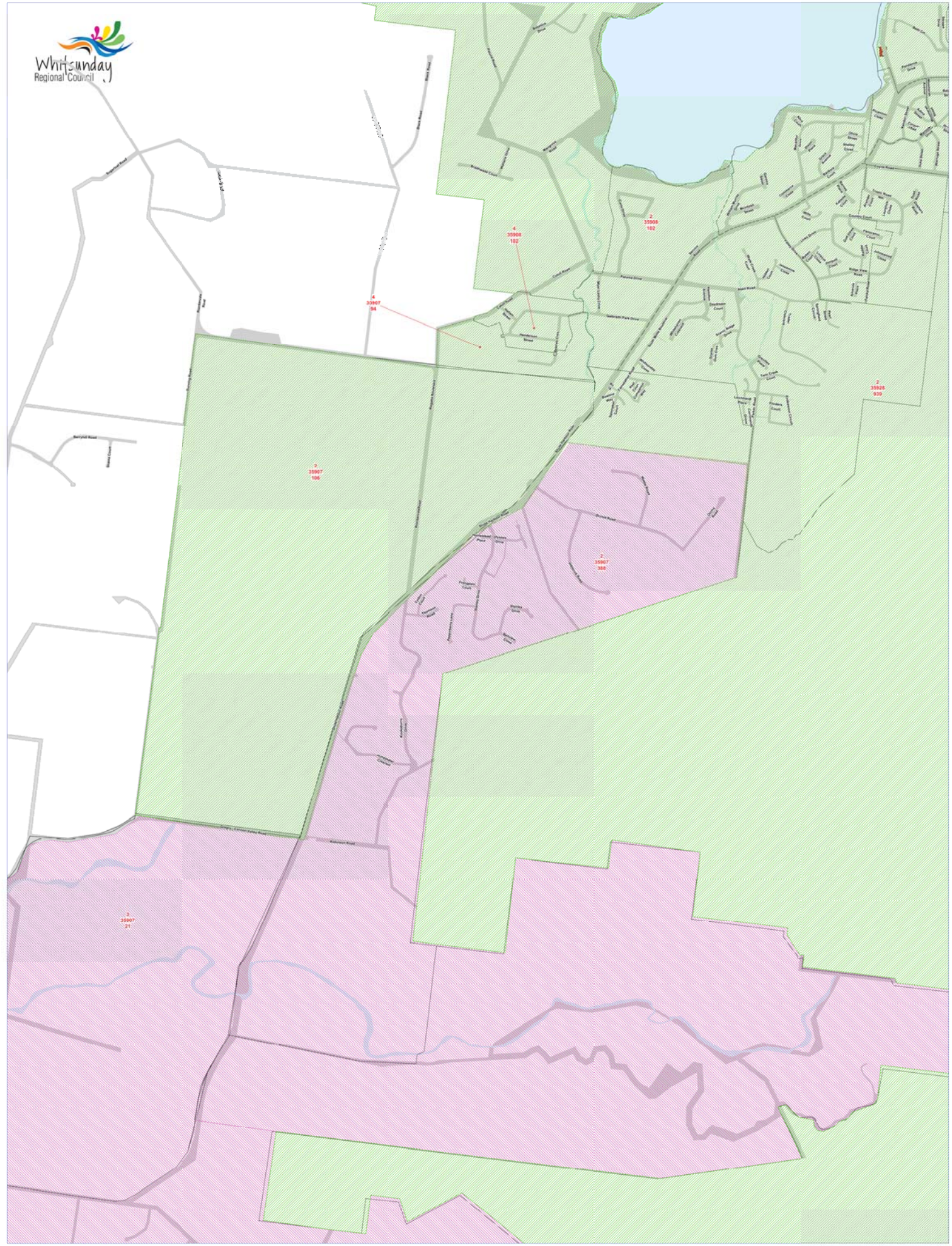
The current divisional boundary is at Gregory Cannon Valley Road, Cannon Valley as demonstrated at figure 1 below:





	<b>Division 2</b>
--	-------------------

This would place both divisions within the permitted range of 3324 to 4063 electors per division.



**Legend**

- Whitbourne SA1
- WMC Proposed Divisions
- Division 1
- Division 2
- Division 3
- Division 4
- Division 5
- Division 6

Created By

1992-1993

Scale 1: 10,000 (40%)

2018-01-01

09/10/2014 10:25

• **André Malraux**

◎/2016年上映

9404

### Proposed Whitewater Divisions

This data set is an extract from Queensland's Digital Mineral Database. Use of this data set may be subject to copyright law without the permission of the Mineral Resources Department of Natural Resources and Mines.  
© The State of Queensland (Department of Natural Resources and Mines).  
No liability is accepted for any loss or damage that may arise from the use of or reliance on this data.

**From:** DESNI WILKINS <[REDACTED]>  
**Sent:** Monday, 6 May 2019 2:01 PM  
**To:** LG CC Submissions  
**Subject:** Whitsunday REgional Council boundaries submission

TO WHOM IT MAY CONCERN

I believe our DIVISION 4 IS WAY TOO LARGE and should be divided into two divisions making it far easier for the elected councillor to oversee his/her area and its needs.

I feel our Mayor and councillors as well as the input of our CEO would be far better suited to make the decisions needed for the breaking up of this very large division.

Regards

Mrs D Wilkins  
[REDACTED]  
[REDACTED]

**Sent:** Sunday, 12 May 2019 10:21 AM  
**To:** LG CC Submissions  
**Subject:** (78703) Whitsunday Regional Local Government Area - Gary Simpson

Online submission for **Whitsunday Regional Local Government Area** from **Gary Simpson**

---

#### **Submission Details**

**Name:** Gary Simpson

**Submission Text:** With the current population growth of the Cannonvale/Airlie Beach, the neighbouring Hinterland area and forecast continuing growth of Divisions 1, 2 & 4 it makes more sense that the western area not be aligned with the continual growth of the coastal community as their needs and focuses are very different. As Divisions 5 & 6 are growing at a slower pace, it would make more sense for the Collinsville area to be aligned with these divisions. Since amalgamation, Division 4 has been poorly represented due to the fact that the area is so large and needs so diverse, that it is difficult for any one person to manage. The community's needs and services are vastly different in the coastal tourism communities of Dingo Beach, Hideaway Bay, Sugarloaf, Strathdickie & Riordanvale areas compared to Collinsville, Scottville & Mt Coolan that it makes more sense to align these western areas with our northern Divisions of 5 & 6 which are generally declining in population. If this proposal isn't workable I would then propose an undivided Council with no divisions. This would then overcome the issues arising from amalgamation.

**File Upload:** No file uploaded ()

---

# Queensland 2019 Local Government Redistribution Whitsunday Regional Council

Prepared by Mark Yore



## Introduction

The current need for redistribution has arisen due to the number of electors in Division 2 being outside the 10 percent tolerance for seats before automatically triggering a reference to the Local Government Change Commission.

While this is the principal reason, the Change Commission is not limited to this area only.

*The Change Commission assesses proposals in any way it deems appropriate, unless the Minister provides specific directions. Reviews can consider a range of factors such as:*

- *voter enrolment numbers*
- *community interests; and*
- *geographical features that make easy-to identify boundaries.*

There is also an factual error in the referral from the Minister – “*I am advised that there are several planned developments in the Whitsunday Shores (Bowen – Division 6)...*”.

Whitsunday Shores is located to the south of Bowen and is in Division 5 – and will continue to be in Division 5.

While the Change Commission may consider the views of the Minister, that does not preclude them from taking a wider approach to boundary changes. The Minister may have the final say but it is incumbent upon the Change Commission to provide fact-based, independent advice in accordance with the Local Government Act.

## General principles

At the start of this redistribution I wish to lay out the guidelines behind my approach to the redistribution. This provides a touchstone for my constructions as well as making it easier, hopefully, to understand my reasoning.

1. Boundaries must respect physical limits to borders, namely:
  - a. Natural geographic boundaries – coastlines, rivers, mountain ranges, national parks
  - b. Existing physical boundaries – main roads, railway lines
  - c. Boundaries must not break SA1 boundaries, unless there is no other choice.
  - d. Boundaries must also follow road or sea transportation links, and where possible should provide the shortest possible distance between the most distant points of any individual division. This ensures the best possible access to their elected member for each elector.
2. If historical inequitable boundaries can be corrected in a redistribution, they should be. The notion of keeping an unfair division because it has always been unfair is not a valid reason.
3. Boundaries must demarcate “community of interest”, and not unduly place areas together that do not share common interests.

4. Boundary changes should minimise adverse effects on the greatest numbers of people.
5. If two (or more) existing seats can be realigned on a common boundary then this should be the preferred method.
6. Divisions belong to electors, not to Councillors, and arguments that depend on maintaining changes for the sake of elected officials should be disregarded.

## Methodology and comments

At the bare minimum there could be a simple exchange between Division 2 and Division 3. However this ignores the significant issues with the construction of Division 4.

1. Division 4 has been devised to provide the most benefit for electors in Divisions 5 and 6, while creating significant access problems for Divisions 3 and 4.
2. The Collinsville-based Division 4 contains both Lake Proserpine (Peter Faust Dam) and the Proserpine (Whitsunday Coast) Airport.
3. To travel within the existing Division 4 from Collinsville to Lethebrooke requires either passing through areas of Mackay Regional Council or through Divisions 6, 5 and 3 to reach the other side of the electorate. Essentially the previous boundary changes have produced an insular division.
4. Electors in the eastern part of Division 4 frequently engage with the Councillor for Division 3 and the majority of their business interaction is within Proserpine.

## Transport analysis

I've provided the distance and time calculations to reach the most distant points of each division with the current and proposed boundaries, calculated by Google Maps. I've also specifically calculated a starting point of Collinsville due to the lower population density in the western part of Division 4. I have not included travel to the islands.

With sufficient time available it would have been more accurate to complete population density distance calculations.

Division	Current distance	Current time	Proposed distance	Proposed time
Division 1	15.3 km	20 min	15.3 km	20 min
Division 2	16.3 km	21 min	16.3 km	21 min
Division 3	58.2 km	56 min	58.2 km	56 min
Division 4	328 km	219 min	306 km	204 min
Division 4 (Collinsville)	169 km	108 min	146 km	92 min
Division 5	85.6 km	58 min	7.2 km	10 min
Division 6	41.9 km	38 min	75.7 km	57 min

## Electoralates

The net change to all electoralates as detailed in the changes below will result in the following counts. The proposed changes will affect 5,130 electors, less than the average population turnover in the region, but will provide greater certainty in the long run. All of the divisions are well within the plus or minus 10 percent range. As noted, the potential for growth in Division 5 has resulted in a bias towards the lower end of the scale. If the Commission believes that the external growth forecast is unlikely, then it is a simple matter to transfer an SA1 from Division 6 to Division 5. Complete SA1 allocations are contained in Appendix 1.

<b>Current Division</b>	<b>Enrolment at 31 January 2019</b>	<b>Average enrolment at 31 January 2019</b>	<b>Enrolment at 31 March 2024</b>	<b>Average enrolment at 31 March 2024</b>
Division 1	3,673	99.44%	4,047	105.29%
Division 2	3,809	103.13%	4,035	104.98%
Division 3	3,543	95.93%	3,722	96.83%
Division 4	3,916	106.02%	3,749	97.54%
Division 5	3,427	92.78%	3,556	92.52%
Division 6	3,793	102.69%	3,953	102.84%

### Division 1

This division requires no change and is anticipated to grow at a faster rate than any other in the Whitsunday Regional Council. As this division has historically undergone rapid decline and growth due to market and weather events, it is likely to be the most volatile division in terms of elector numbers.

### Division 4

At the moment Division 4 consists of two areas unconnected by any contiguous transport links. I believe that this electorate breaches the community interest and geographic features requirements for the construction of divisions and therefore I am more concerned that any approach to this redistribution should start with long-overdue boundary repairs.

In essence my submission uses the natural boundary of the Proserpine Forest and the ridgelines to remove the eastern part of Division 4. This enable the division to flow along the Bowen Development Road and Peter Delemothe Road to reach the northern boundary of Whitsunday Regional Council past Gumlu. A previously split SA1 (3134012) has been realigned to follow the Don River instead of the western side of the Bowen Development Road. An existing split SA1 (3133702) has been left in its current state.

To ensure sufficient population it also absorbs some of the farmland and low residential areas in Bowen north. Not only does this build on the historic links between Collinsville and

Bowen, it also follows the winter growing combined agricultural market of the Bowen-Gumlu Growers Association.

This provides a much stronger community of interest than a split seat covering Collinsville and Lethebrooke.

### **Division 6**

The changes in Division 4 removes the extended northern reach making Division 6 a solely Bowen seat. In order to minimise the impact of change I've simply transferred enough SA1s from the northern part of Division 5 to reach the population requirements. It has become a more urban seat and loses much of the former farming area, creating a cohesive community of interest.

### **Division 3**

In the southernmost part of the Council I have transferred a number of SA1s to Division 3 that were in Division 4. This has provided much easier access for residents and largely formalised the existing interactions with the Councillor for Division 3. A small SA1 at Brandy Creek has also been added to relieve the quota from Division 2. The Proserpine division now contains the Proserpine Airport and Lake Proserpine, previously both held within Division 4.

### **Division 2 and Division 5**

Division 2 is currently 166 voters over quota. While 76 electors have been transferred to Division 3, there is an opportunity to better enhance communities of interest.

Division 5 has lost some of the northern parts of Bowen but it continues down the Bruce Highway to gain the southern parts of the Bowen bay, including Cape Gloucester, Hydeaway Bay and Dingo Beach; and the growth areas at Woodwark, Riordonvale, Strathdickie and Myrtlevale.

With respect to Whitsunday Shores future developments I believe it may be a triumph of hope over experience. (May 29, 2018 <https://www.afr.com/real-estate/building-bowen-greater-rewards-group-revives-whitsunday-shores-estate-plan-20180529-h10ou1> and April 26, 2010 <https://www.dailymercury.com.au/news/whitsunday-shores-is-on-the-go-ahead/517763/>.)

These two divisions allow further fine tuning for anticipated growth along a relatively homogenous border. While elector numbers in Division 5 are purposefully kept low for future development, there is also the opportunity for small adjustments to balance out unexpected growth in Division 2.

## **Endnote**

I would like to express my concern at the short time permitted to produce a submission, especially given that it is currently conducted during a Federal election. The request from Whitsunday Regional Council went to the Minister's office on March 1, then from the Minister's office to the Change Commission on April 2, was advertised on April 27 with

submissions to close on May 13. While I do not believe it was done purposefully to reduce the level of public participation, this will certainly be the outcome.

The map files were provided in Mapinfo and ESRI formats only. In future the goal of also providing them as Google Earth KML and KMZ files would be appreciated.

The other issue I wish to bring to your attention is that much of the material is not disability-accessible. In particular scanning a document to create a PDF is widely recognised as bad practice, not just for those with a disability but also those who are unable to 'copy and paste' the text.

Thank you for the opportunity to contribute.

Kind regards,

Mark Yore

## Appendix 1 – SA1 Allocations sorted by proposed divisions

	No change
	Change proposed

Current Division	Proposed Division	SA1	Enrolment at 31 January 2019	Average enrolment at 31 January 2019	Enrolment at 31 March 2024	Average enrolment at 31 March 2024
Division 1	Division 1	3135901	238		251	
Division 1	Division 1	3135902	4		4	
Division 1	Division 1	3135903	238		315	
Division 1	Division 1	3135904	231		228	
Division 1	Division 1	3135905	551		551	
Division 1	Division 1	3135906	29		29	
Division 1	Division 1	3135910	394		408	
Division 1	Division 1	3135911	366		395	
Division 1	Division 1	3135912	297		353	
Division 1	Division 1	3135913	227		222	
Division 1	Division 1	3135914	304		300	
Division 1	Division 1	3135915	94		92	
Division 1	Division 1	3135916	86		141	
Division 1	Division 1	3135917	0		0	
Division 1	Division 1	3135918	90		151	
Division 1	Division 1	3135921	308		355	
Division 1	Division 1	3135926	216		252	
Division 2	Division 2	3135907	588		741	
Division 2	Division 2	3135908	204		211	
Division 2	Division 2	3135909	314		356	
Division 2	Division 2	3135919	191		207	
Division 2	Division 2	3135920	282		277	
Division 2	Division 2	3135922	319		315	
Division 2	Division 2	3135923	128		126	
Division 2	Division 2	3135924	188		205	
Division 2	Division 2	3135925	267		265	
Division 2	Division 2	3135928	939		948	
Division 2	Division 2	3135929	389		384	
Division 2	Division 2	3136001	0		0	
Division 4	Division 3	3136104	274		299	
Division 2	Division 3	3136105	76		82	
Division 3	Division 3	3136107	242		246	
Division 4	Division 3	3136108	189		193	
Division 3	Division 3	3136109	256		269	

Division 3	Division 3	3136110	328
Division 3	Division 3	3136111	59
Division 3	Division 3	3136114	334
Division 3	Division 3	3136115	149
Division 3	Division 3	3136116	275
Division 3	Division 3	3136117	192
Division 3	Division 3	3136118	257
Division 3	Division 3	3136119	245
Division 3	Division 3	3136120	244
Division 3	Division 3	3136121	3
Division 3	Division 3	3136122	4
Division 4	Division 3	3136122	234
Division 3	Division 3	3136123	134
Division 4	Division 3	3136123	48
Division 6	Division 4	3133701	190
Division 6	Division 4	3133702	122
Division 4	Division 4	3134001	109
Division 4	Division 4	3134002	131
Division 4	Division 4	3134003	147
Division 4	Division 4	3134004	187
Division 4	Division 4	3134005	151
Division 4	Division 4	3134006	106
Division 4	Division 4	3134007	148
Division 4	Division 4	3134008	365
Division 6	Division 4	3134008	16
Division 6	Division 4	3134009	136
Division 6	Division 4	3134010	164
Division 5	Division 4	3134012	206
Division 6	Division 4	3134012	79
Division 6	Division 4	3134013	165
Division 6	Division 4	3134015	184
Division 4	Division 4	3136101	378
Division 4	Division 4	3136102	428
Division 4	Division 4	3136103	198
Division 4	Division 4	3136113	306
Division 5	Division 5	3133702	241
Division 5	Division 5	3133704	437
Division 5	Division 5	3133706	232
Division 5	Division 5	3133707	229
Division 5	Division 5	3133708	267
Division 5	Division 5	3133719	288
Division 5	Division 5	3133720	211
Division 5	Division 5	3134011	115
Division 5	Division 5	3134014	0
Division 3	Division 5	3135907	21
Division 4	Division 5	3135927	0

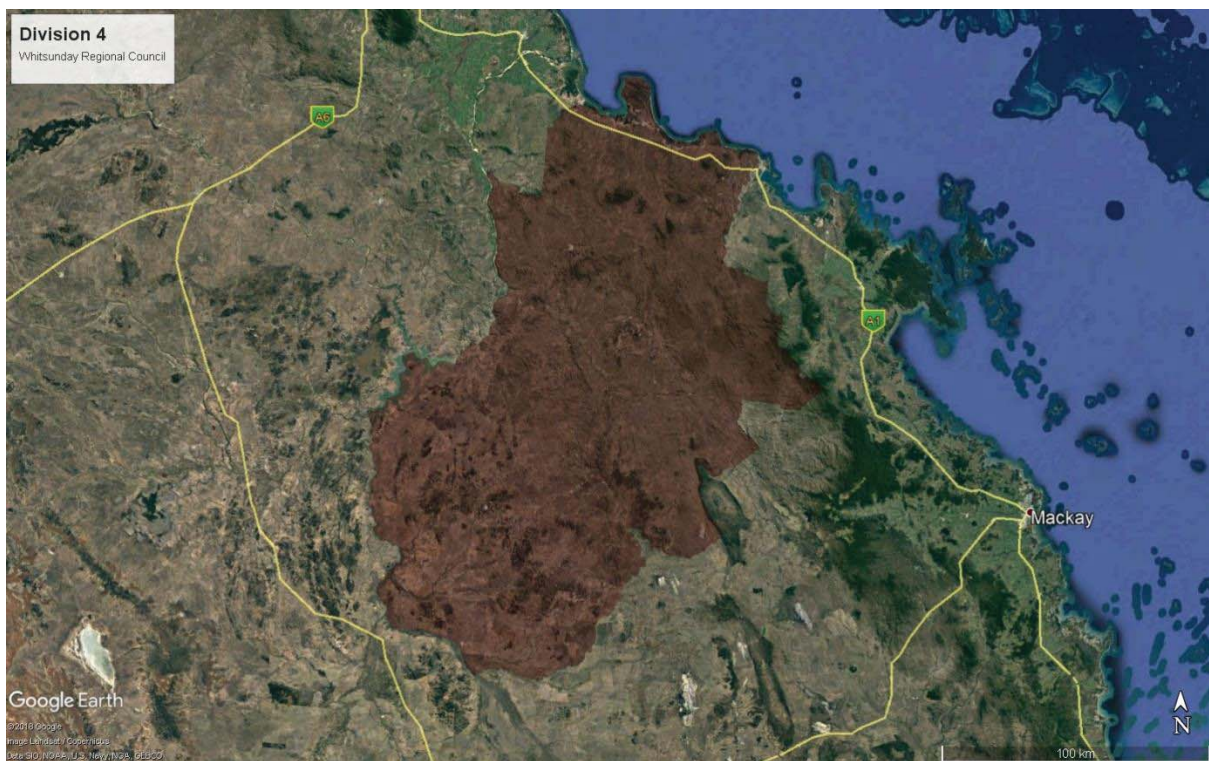
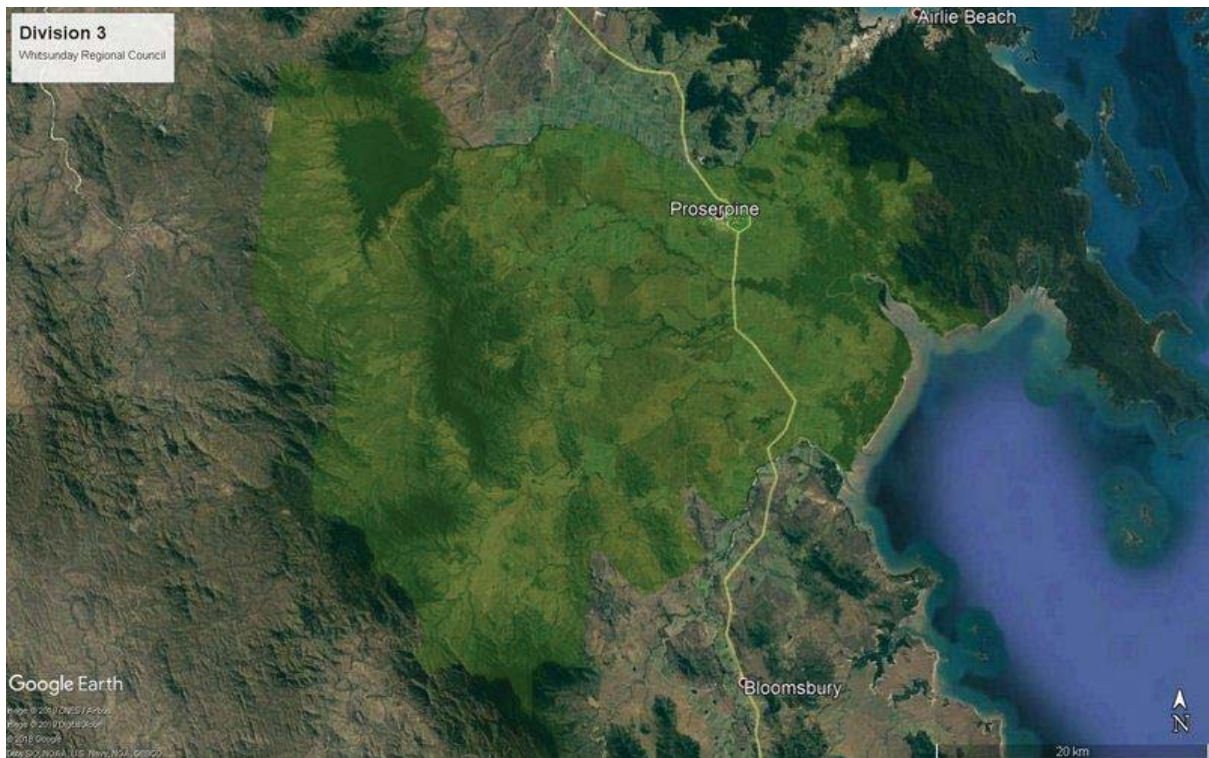
336
60
374
152
287
194
274
268
250
3
4
245
137
49
197
137
94
113
131
163
130
91
128
324
14
121
142
182
70
142
159
404
460
218
329
270
444
243
231
271
303
211
98
0
26
0

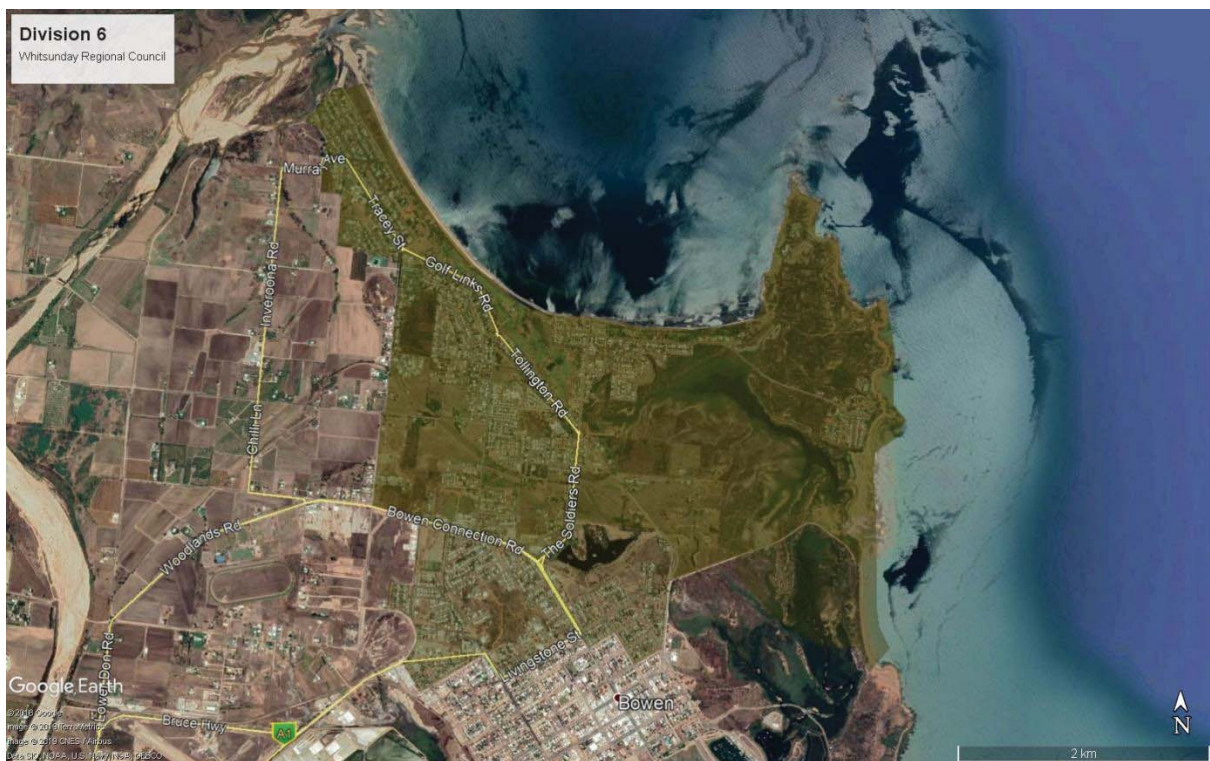
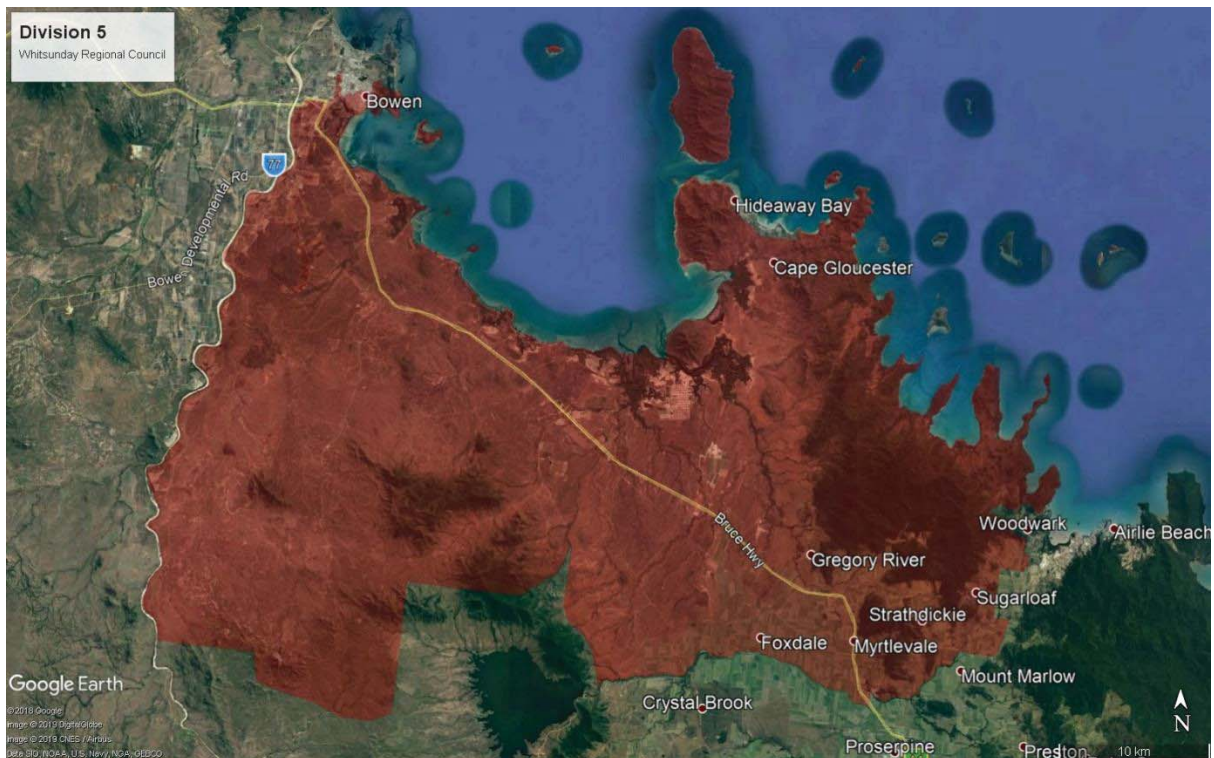
Division 2	Division 5	3135927	344
Division 3	Division 5	3136103	58
Division 3	Division 5	3136105	323
Division 3	Division 5	3136106	344
Division 4	Division 5	3136112	317
Division 6	Division 6	3133703	189
Division 5	Division 6	3133705	357
Division 6	Division 6	3133709	203
Division 6	Division 6	3133710	279
Division 6	Division 6	3133711	390
Division 6	Division 6	3133712	201
Division 6	Division 6	3133713	310
Division 6	Division 6	3133714	258
Division 6	Division 6	3133715	440
Division 5	Division 6	3133716	173
Division 5	Division 6	3133717	376
Division 5	Division 6	3133718	332
Division 6	Division 6	3133718	78
Division 6	Division 6	3133721	207

Total22,1613,69423,0623,844

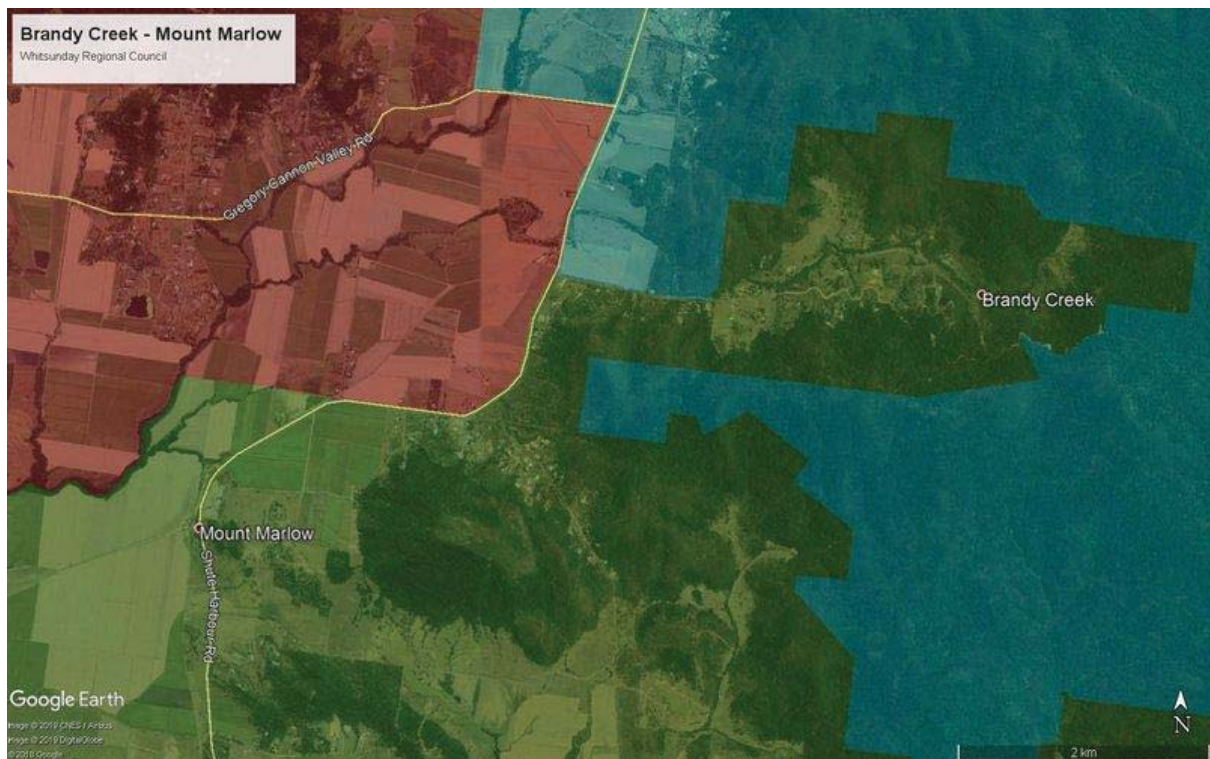
## Appendix 2 – Proposed division maps

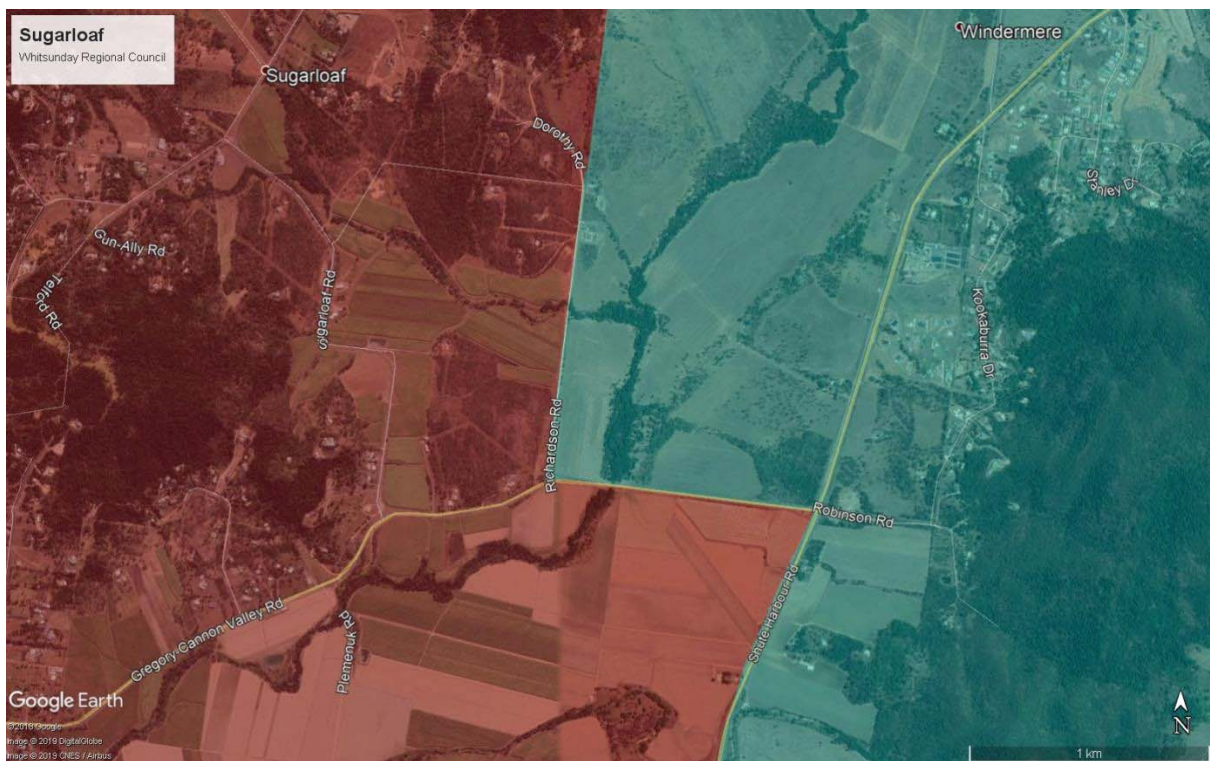
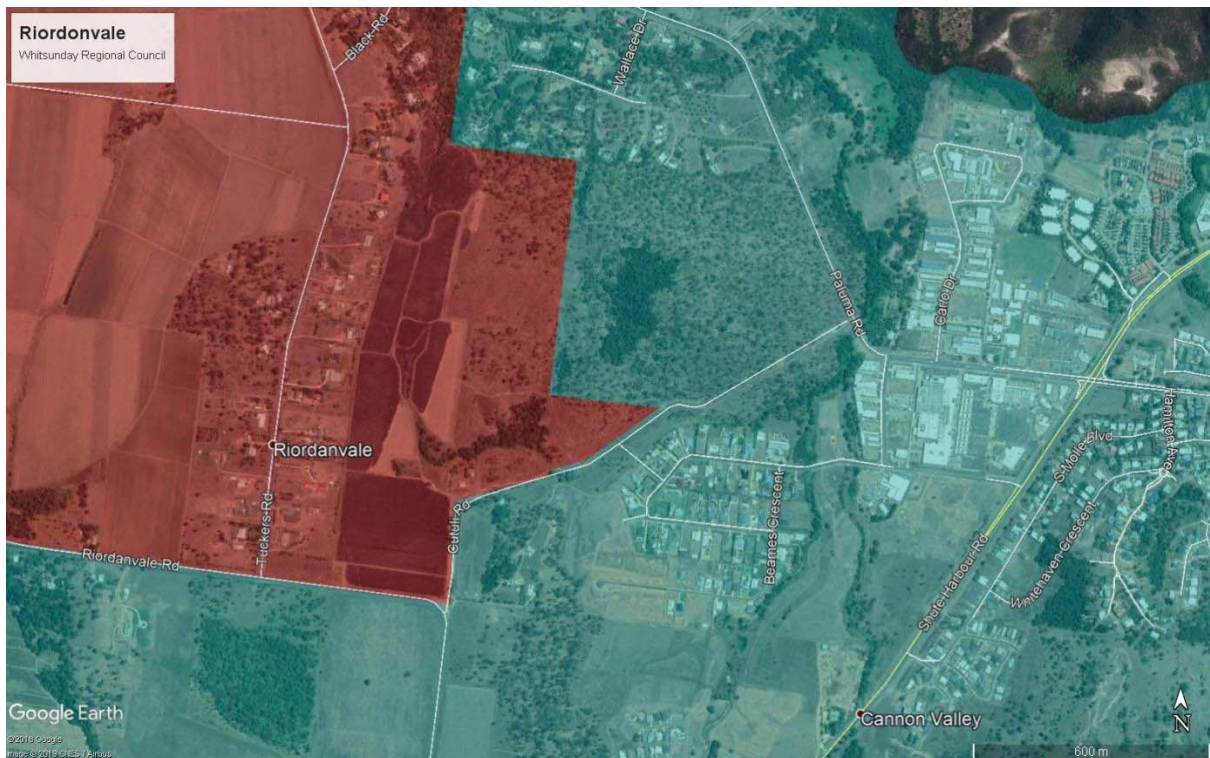




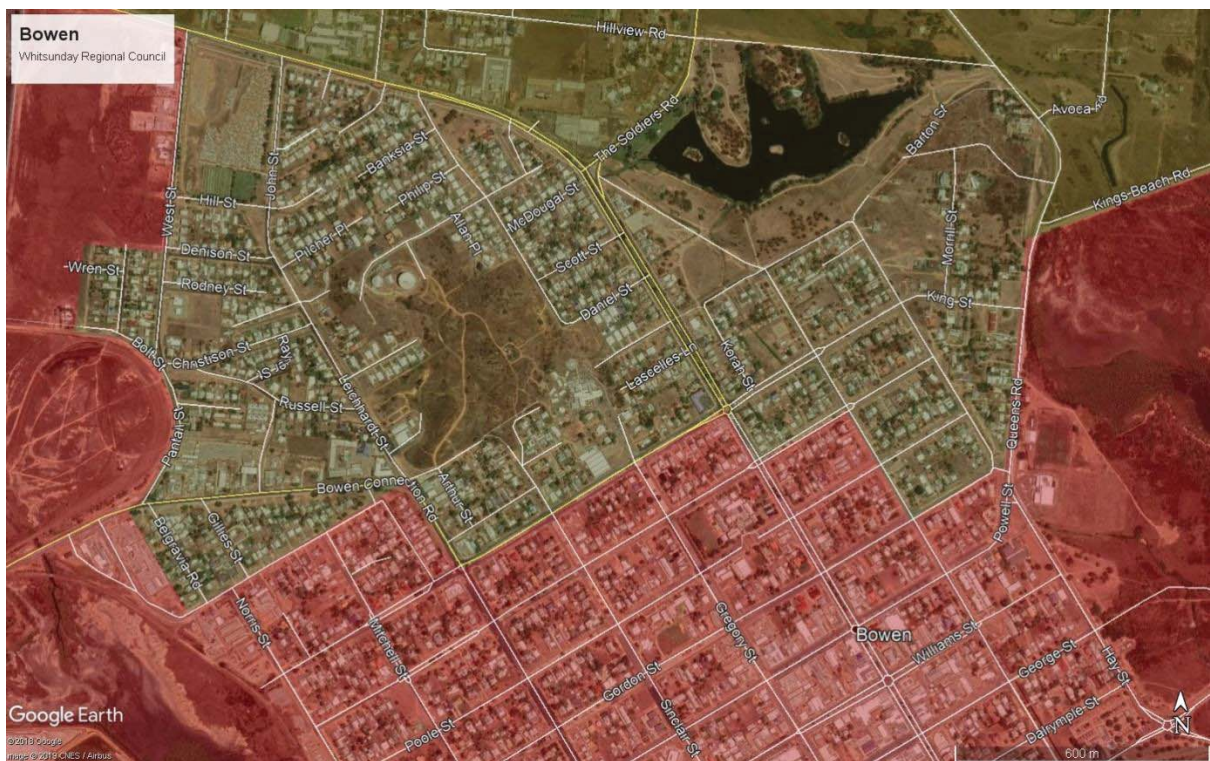
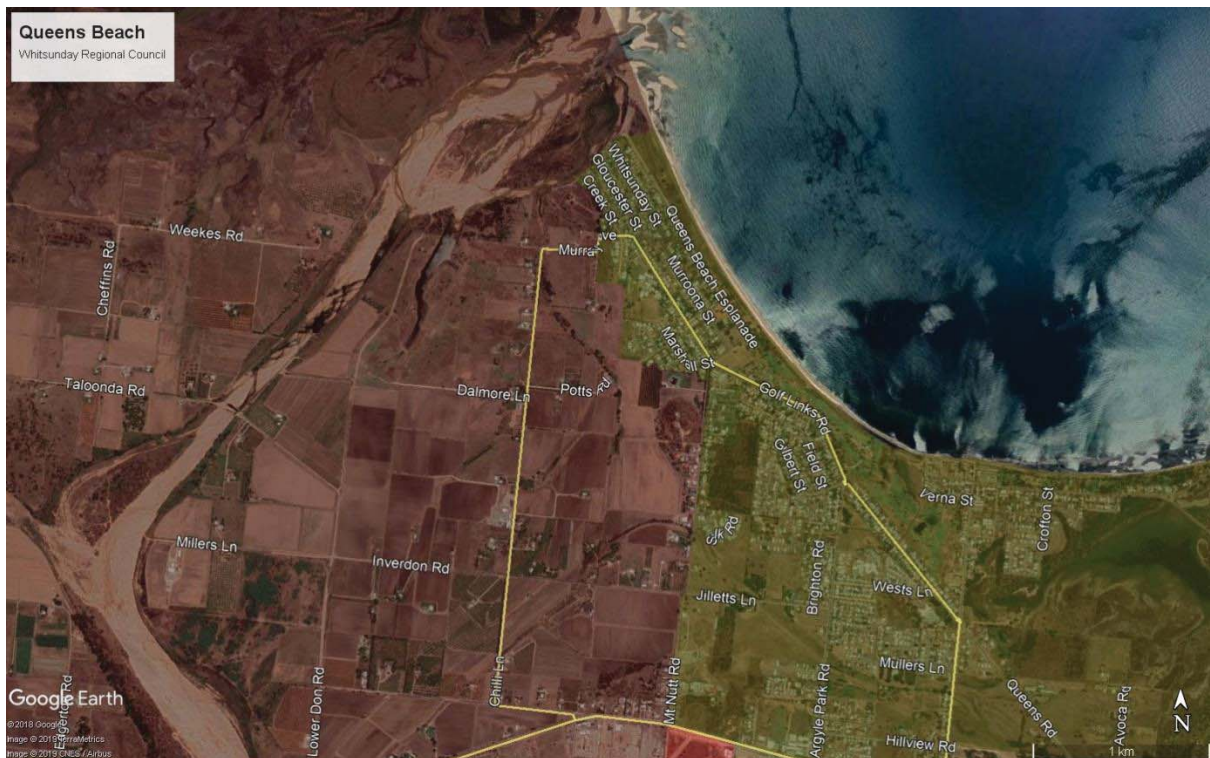


## Appendix 3 – Proposed division maps border









**From:** Jill Collins  
**Sent:** Monday, 13 May 2019 12:26 PM  
**To:** LG CC Submissions  
**Subject:** WRC redistribution data  
**Attachments:** Proposed Divisions.kmz; Queensland Local Government Redistribution 2019 - Whitsunday submission Mark Yore.pdf

Dear Sir/Madam

I am writing in support of a proposed Boundary Redistribution for Whitsunday Regional Council.

This proposal has been sent to me by Mr Mark Yore.

I believe that it is the most sensible, even and fair proposal that could possibly be produced.

It has taken into account future growth in the region... with proposed population numbers for 2024 still fitting into this proposal.

I strongly urge you to seriously consider this proposal.

Regards

John Collins

[Redacted signature block]

---

**From:** John Collins [REDACTED]  
**Sent:** Monday, 13 May 2019 2:50 PM  
**To:** LG CC Submissions  
**Subject:** WRC redistribution data  
**Attachments:** Proposed Divisions.kmz; Queensland Local Government Redistribution 2019 - Whitsunday submission Mark Yore.pdf

Dear Sir/Madam

I am writing in support of a proposed Boundary Redistribution for Whitsunday Regional Council.

This proposal has been sent to me by Mr Mark Yore.

I believe that it is the most sensible, even and fair proposal that could possibly be produced.

It has taken into account future growth in the region... with proposed population numbers for 2024 still fitting into this proposal.

I strongly urge you to seriously consider this proposal.

Regards

Jill Collins  
[REDACTED]  
[REDACTED]  
[REDACTED]

13<sup>th</sup> May 2019

Local Government Change Commission

Level 20, 1 Eagle Street,

BRISBANE QLD 4000

To Whom It May Concern,

I would like to express my support for the Boundary Redistribution Proposal for Whitsunday Regional Council, prepared by Mark Yore.

An incredible amount of work and detail has gone into the preparation of this proposal, as well as, particular attention, given to the future growth of the Whitsunday Region.

All practical aspects of a fair and equitable modification to the existing boundaries has been considered, and, in my view, is the best suggestion for realigned boundaries within the Whitsunday region that I, as a very actively involved community member, have personally seen.

It's an accurate and practical proposal on all levels, especially in terms of a more evenly distributed alignment of the Divisional boundaries, creating equality and assisting in the growth of a more unified region.

As well as, maintaining the population numbers required in each Division to remain within the threshold of allowable figures.

The proposition being put forward by Mr Yore is well worth your attention and I ask that you please give it some serious consideration.

Thank you for your time and I look forward to the implementation of these Boundary Redistributions for the Whitsunday Region.

Sincerely,

Tracey Cameron

[REDACTED]

[REDACTED]

Ph: [REDACTED]

**Sent:** Monday, 13 May 2019 4:20 PM  
**To:** LG CC Submissions  
**Subject:** (78712) Whitsunday Regional Local Government Area - Cliff Hill  
**Attachments:** Signed-submission.pdf

Online submission for **Whitsunday Regional Local Government Area** from **Cliff Hill**

---

### Submission Details

**Name:** Cliff Hill

**Submission Text:** Mr CE Hill & Mr AJ Telford [REDACTED] CANNONVALE QLD 4802 Electoral Commissioner Electoral Commission Queensland GPO Box 1393 BRISBANE QLD 4001 13 May 2019 Dear Sir, We have taken some interest in the Local Government electoral review that was recently undertaken by the Whitsunday Regional Council for next years Local Government elections. We would like to propose that the following be considered:-

- The population in Divisions 5 & 6 is decreasing, while the population in Divisions 1 & 2 are forecast to grown by up to 16.66% for Division 2 by 2024;
- With no forecast for numbers to rise before the 2024 elections Divisions 5 and 6 could become larger in size, particularly Division 5 which has shrunk by 6.21% with a forecast deviation of 8.47% by 2024;
- Division 4 is very large in area with a steady population which has been forecast to decrease by 3.97% by 2024; Our proposal is as follows:-
- At the 2016 Local Government elections 312 people voted at the Collinsville booth. It could safely be assumed that this number wouldn't fluctuate greatly, so therefore the Division 4 boundary could be changed to the eastern side of the Clarke Ranges with the coastal boundary taking up more of Division 2 to allow for future growth here;
- The western portion of Division 4 be merged into Divisions 5 &/or 6;
- Division 3 also to expand to take in more of Division 2's growth/forecast growth. We urge you to consider all of the above. Yours faithfully Cliff Hill Andrew Telford

**File Upload:** Signed submission.pdf (50.7 KB)

---

Mr CE Hill & Mr AJ Telford  
[REDACTED]  
CANNONVALE QLD 4802

Electoral Commissioner  
Electoral Commission Queensland  
GPO Box 1393  
BRISBANE QLD 4001

13 May 2019

Dear Sir,

We have taken some interest in the Local Government electoral review that was recently undertaken by the Whitsunday Regional Council for next years Local Government elections.

We would like to propose that the following be considered:-

- The population in Divisions 5 & 6 is decreasing, while the population in Divisions 1 & 2 are forecast to grown by up to 16.66% for Division 2 by 2024;
- With no forecast for numbers to rise before the 2024 elections Divisions 5 and 6 could become larger in size, particularly Division 5 which has shrunk by 6.21% with a forecast deviation of 8.47% by 2024;
- Division 4 is very large in area with a steady population which has been forecast to decrease by 3.97% by 2024;

Our proposal is as follows:-

- At the 2016 Local Government elections 312 people voted at the Collinsville booth. It could safely be assumed that this number wouldn't fluctuate greatly, so therefore the Division 4 boundary could be changed to the eastern side of the Clarke Ranges with the coastal boundary taking up more of Division 2 to allow for future growth here;
- The western portion of Division 4 be merged into Divisions 5 &/or 6;
- Division 3 also to expand to take in more of Division 2's growth/forecast growth.

We urge you to consider all of the above.

Yours faithfully

[REDACTED]

Cliff Hill

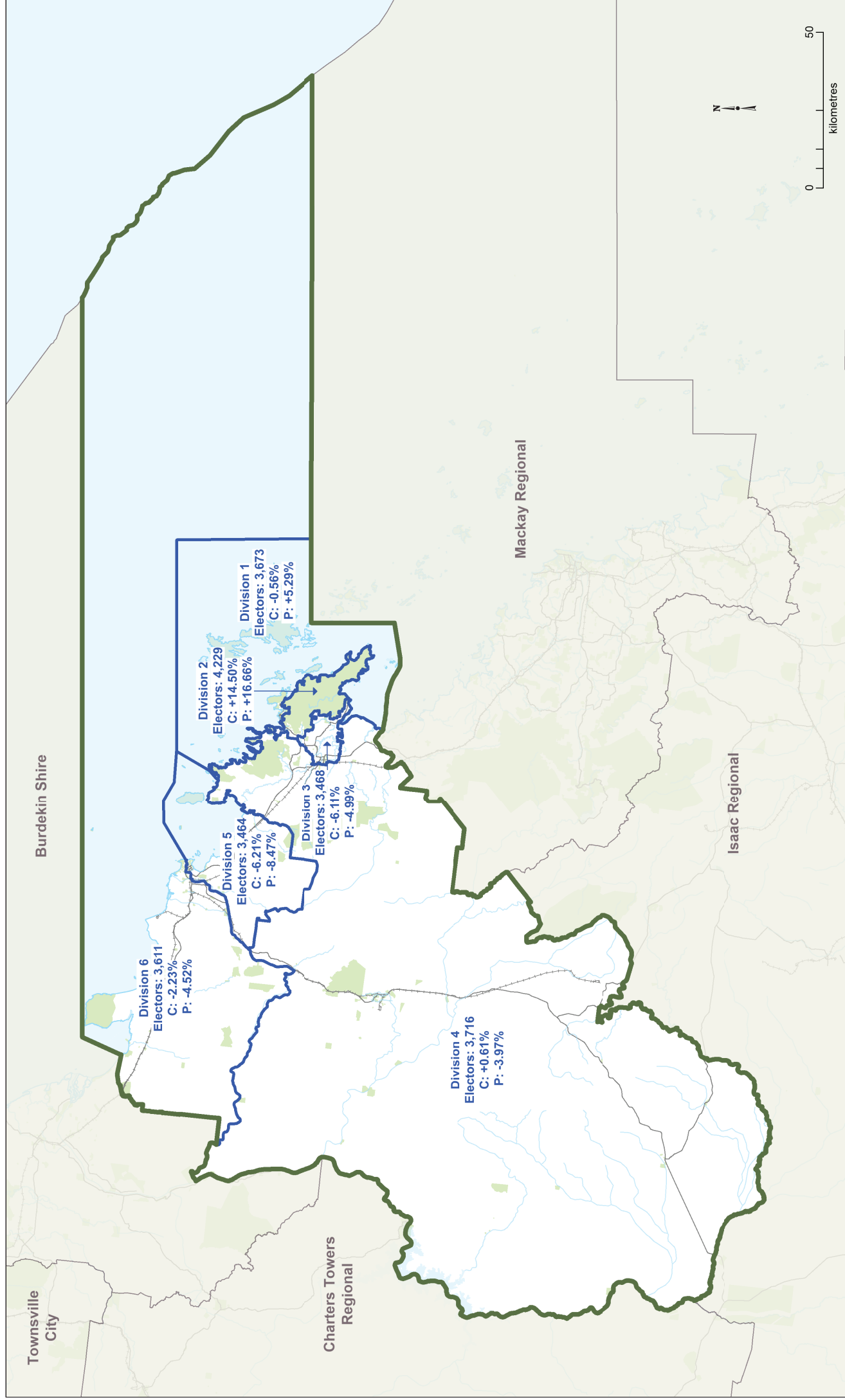
[REDACTED]

Andrew Telford

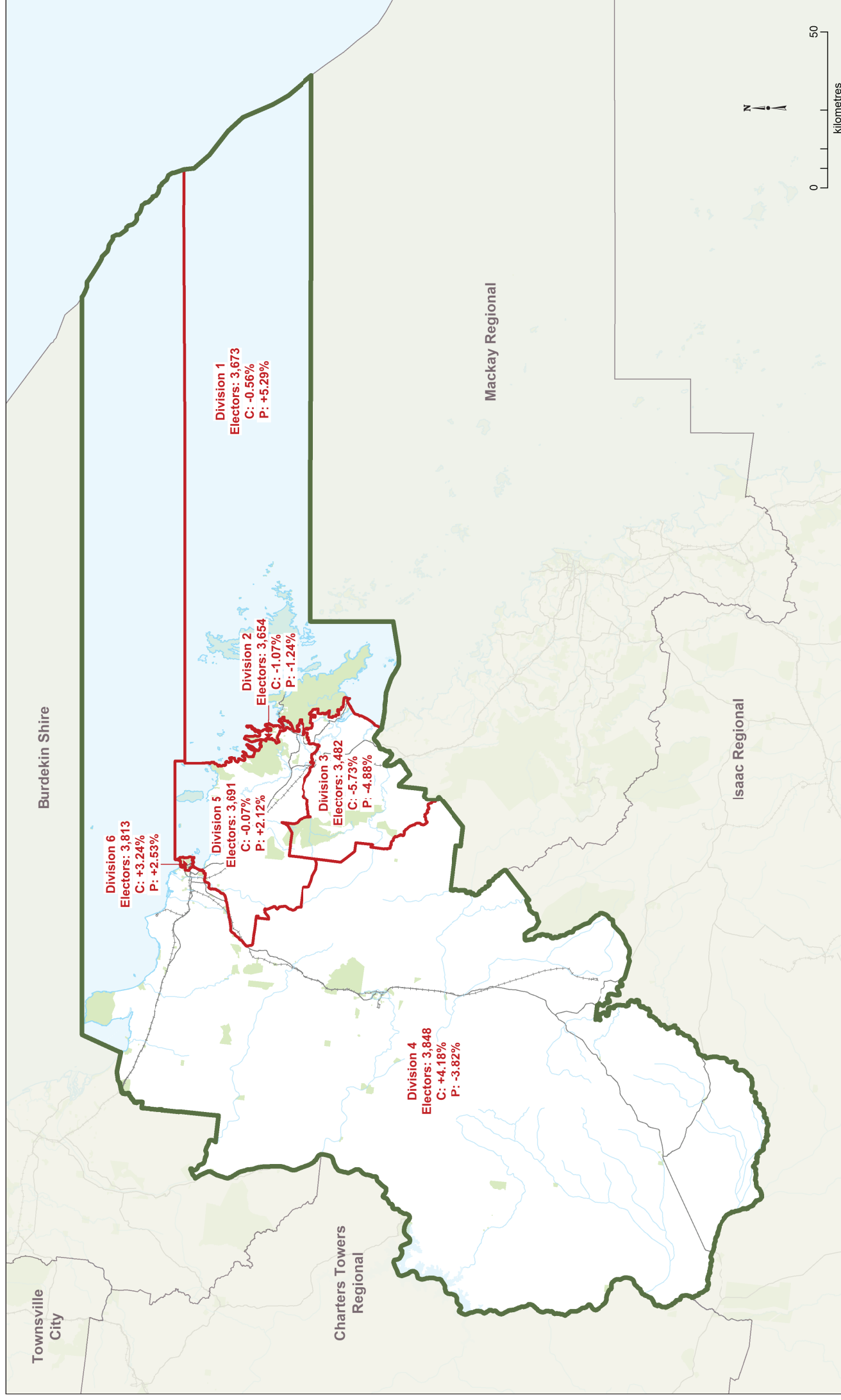
# **APPENDIX C**

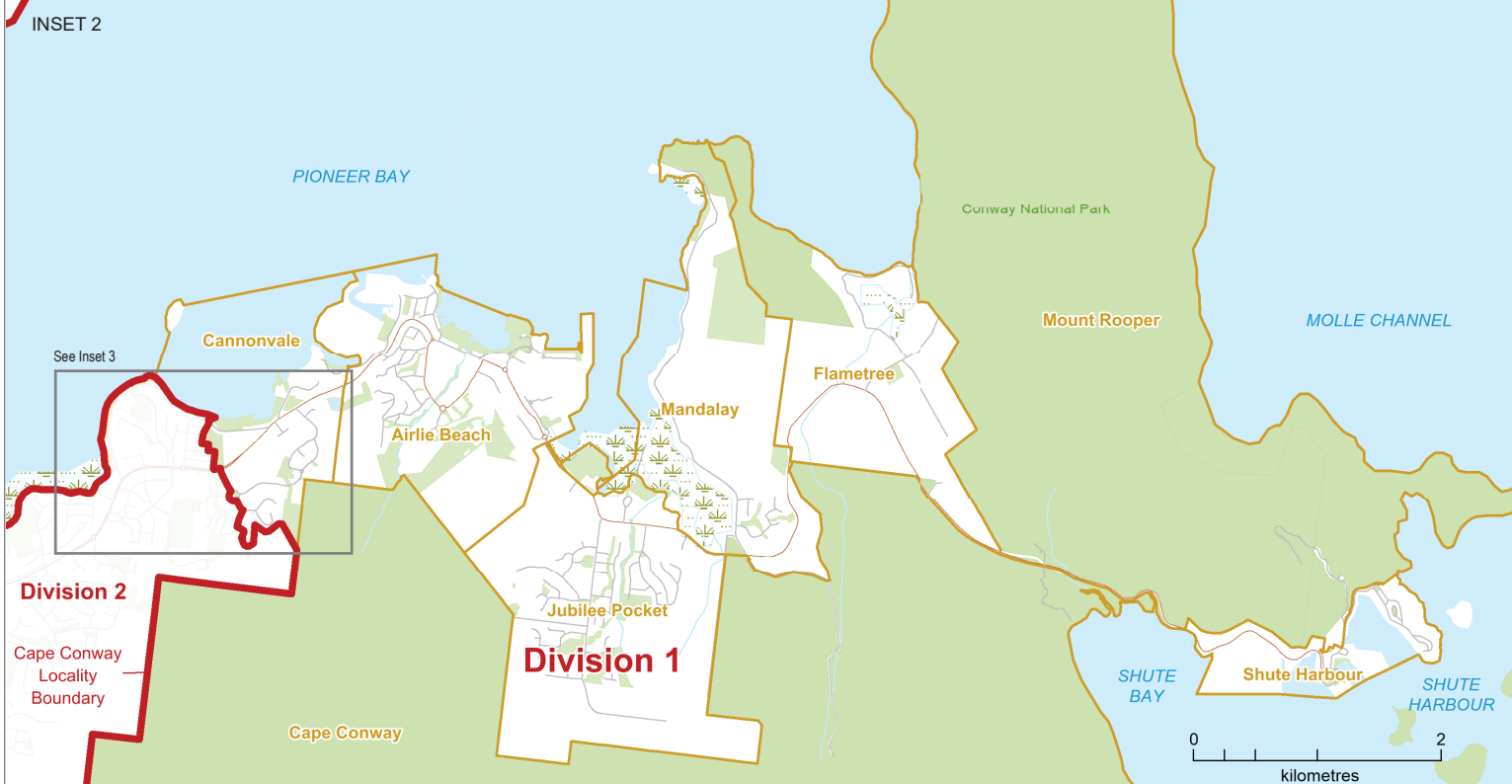
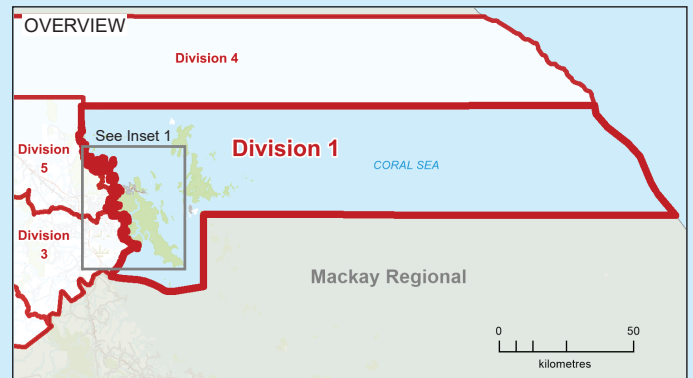
## **Maps of Proposed Divisions**

# WHITSUNDAY REGIONAL Existing Electoral Divisions



# WHITSUNDAY REGIONAL Proposed Electoral Divisions



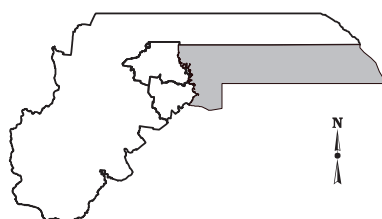


**2019**  
**Local Government Area**  
**Divisional Boundary Review**

**PROPOSED DIVISIONAL BOUNDARIES**

**WHITSUNDAY REGIONAL**  
**Division 1**

Location Map  
**DIVISION 1**



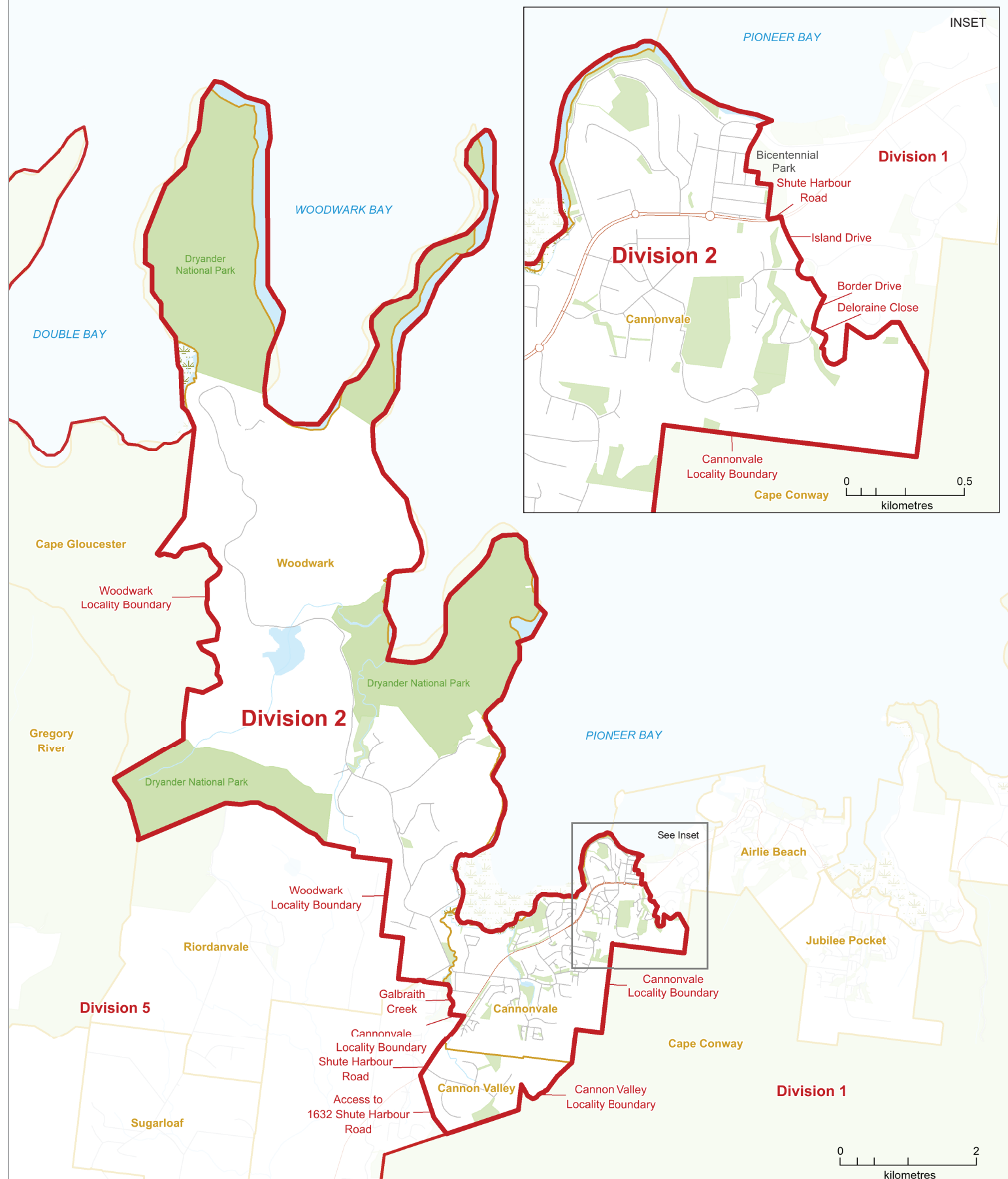
**LEGEND**

- Proposed Division Boundary
- Proposed Adjacent Division
- Locality Boundary
- Adjacent Council
- Reserve, Parkland
- Waterbody
- Railway
- Main Road
- Wetland

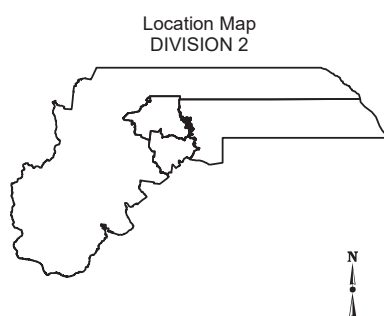
This product was created using datasets from various authoritative sources, and is intended as a guide only to display proposed divisional boundaries.

The digital GIS data is available FREE to download from Queensland Spatial Catalogue, or Qspatial, at <http://qldspatial.information.qld.gov.au>

© The State of Queensland - 2019 (Department of Natural Resources, Mines and Energy)  
 © Electoral Commission of Queensland 2019 Creative Commons (CC BY)



**2019**  
**Local Government Area**  
**Divisional Boundary Review**  
**PROPOSED DIVISIONAL BOUNDARIES**  
**WHITSUNDAY REGIONAL**  
**Division 2**



**LEGEND**

	Proposed Division Boundary		Reserve, Parkland
	Proposed Adjacent Division		Waterbody
	Locality Boundary		Railway
	Adjacent Council		Main Road
			Wetland

This product was created using datasets from various authoritative sources, and is intended as a guide only to display proposed divisional boundaries.

The digital GIS data is available FREE to download from Queensland Spatial Catalogue, or Qspatial, at <http://qldspatial.information.qld.gov.au>










© The State of Queensland - 2019 (Department of Natural Resources, Mines and Energy)  
 © Electoral Commission of Queensland 2019 Creative Commons (CC BY)

**PROPOSED DIVISIONAL  
BOUNDARIES**

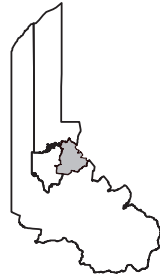
**WHITSUNDAY REGIONAL**

**Division 3**

**LEGEND**

-  Proposed Division Boundary
-  Proposed Adjacent Division
-  Locality Boundary
-  Adjacent Council
-  Reserve, Parkland
-  Waterbody
-  Railway
-  Main Road
-  Welland

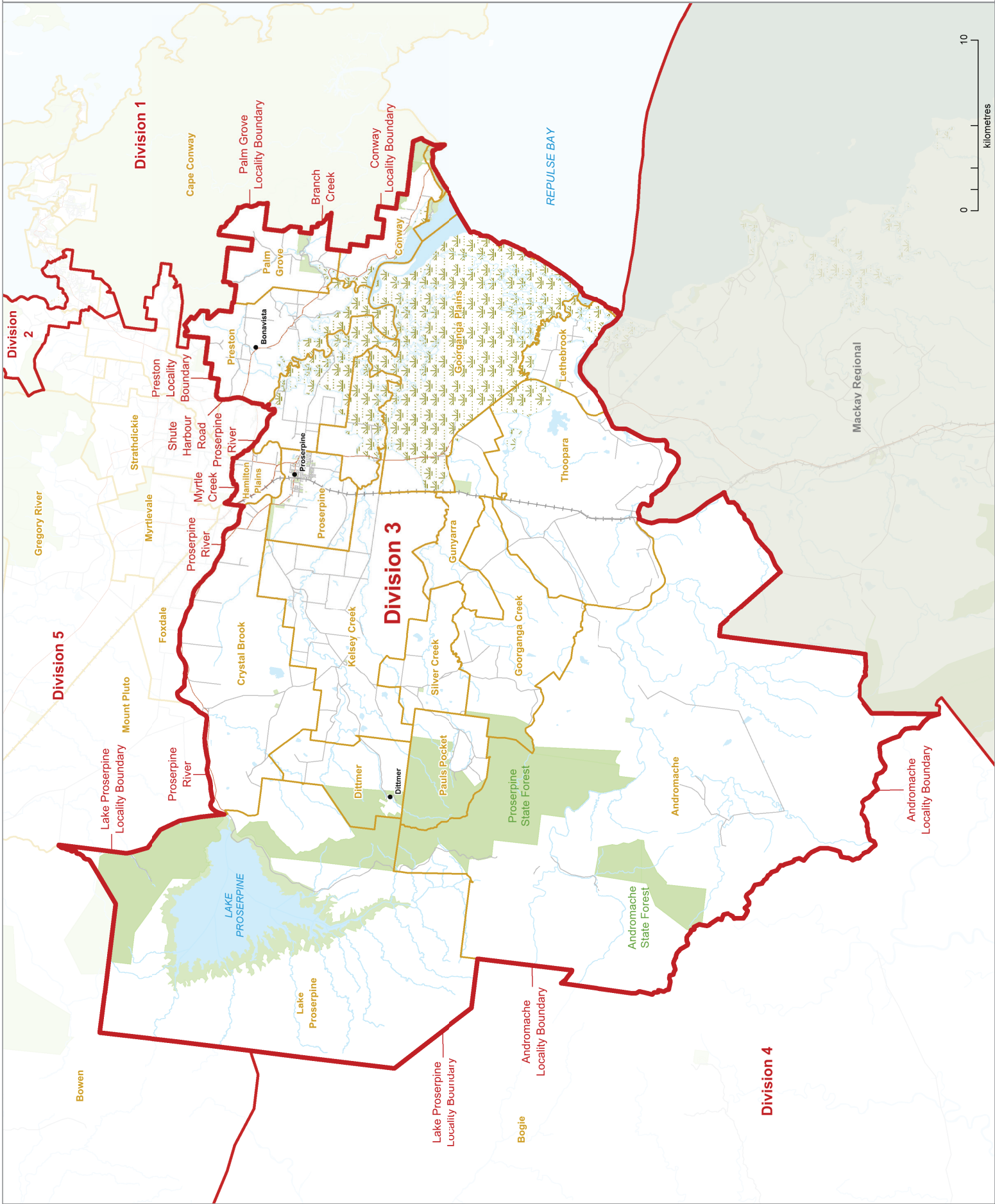
Location Map  
DIVISION 3

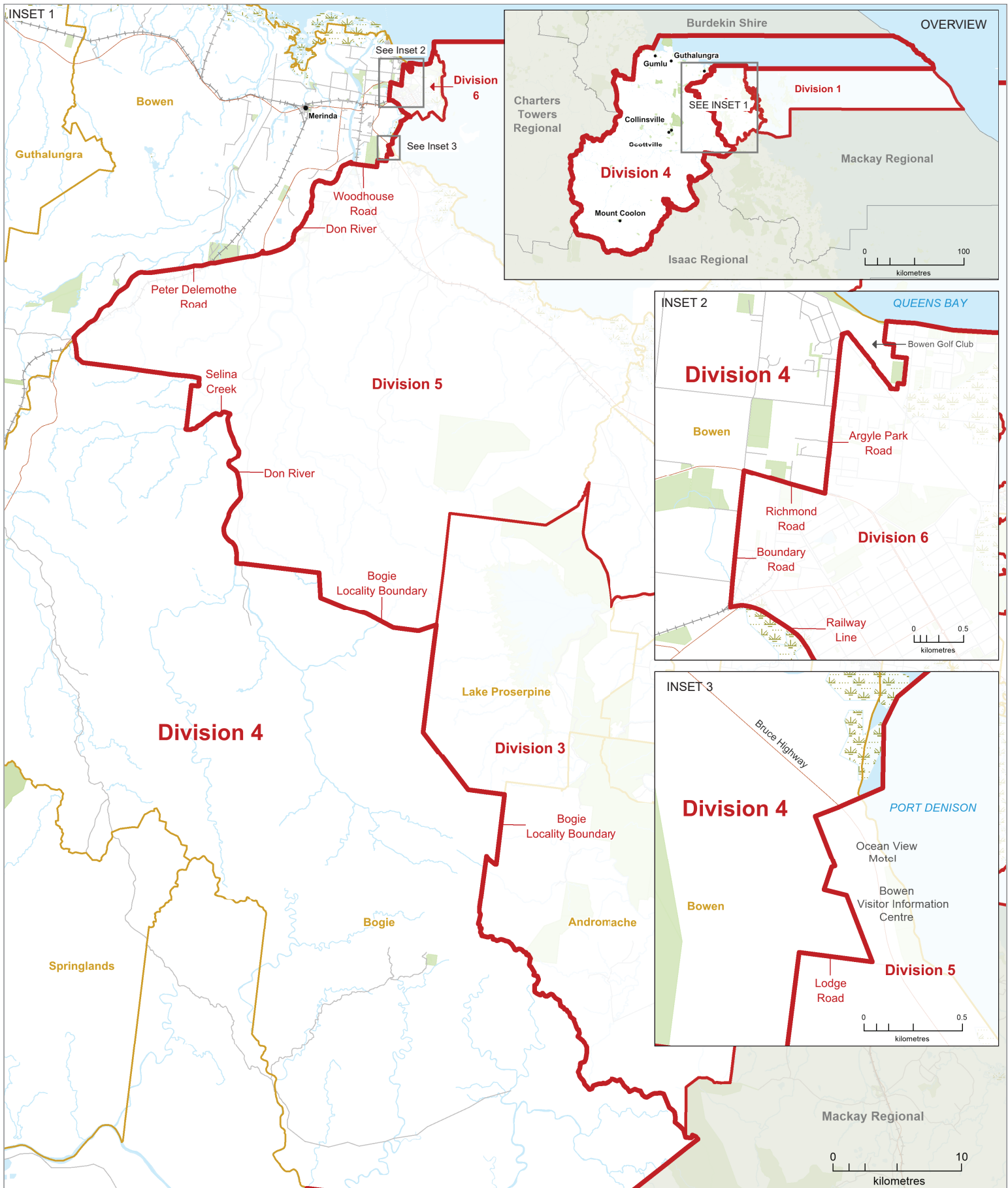


This product was created using datasets from various authoritative sources, and is intended as a guide only to display proposed divisional boundaries.

The digital GIS data is available FREE to download from Queensland Spatial Catalogue or Qspatial, at <http://qdsportal.information.qld.gov.au>

© The State of Queensland - 2019 (Department of Natural Resources, Mines and Energy)  
© Electoral Commission of Queensland 2019  
Creative Commons (CC BY)






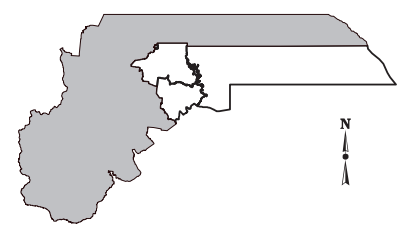
**2019**  
**Local Government Area**  
**Divisional Boundary Review**

**PROPOSED DIVISIONAL BOUNDARIES**

**WHITSUNDAY REGIONAL**  
**Division 4**



Location Map  
DIVISION 4



**LEGEND**

<span style="border: 2px solid red; padding: 2px;"> </span> Proposed Division Boundary	<span style="background-color: #d4edda; border: 1px solid #c3e6cb; padding: 2px;"> </span> Reserve, Parkland
<span style="border: 1px solid red; padding: 2px;"> </span> Proposed Adjacent Division	<span style="background-color: #d1ecf1; border: 1px solid #bee5eb; padding: 2px;"> </span> Waterbody
<span style="border-bottom: 2px solid orange; display: inline-block; width: 20px;"> </span> Locality Boundary	<span style="border-bottom: 2px dashed gray; display: inline-block; width: 20px;"> </span> Railway
<span style="background-color: #e2e3e5; border: 1px solid #d6d8db; padding: 2px;"> </span> Adjacent Council	<span style="border-bottom: 2px solid red; display: inline-block; width: 20px;"> </span> Main Road
	<span style="background-color: #d1ecf1; border: 1px solid #bee5eb; padding: 2px; display: inline-block; width: 10px; height: 10px;"> </span> Wetland

This product was created using datasets from various authoritative sources, and is intended as a guide only to display proposed divisional boundaries.

The digital GIS data is available FREE to download from Queensland Spatial Catalogue, or Qspatial, at <http://qldspatial.information.qld.gov.au>

© The State of Queensland - 2019 (Department of Natural Resources, Mines and Energy)  
© Electoral Commission of Queensland 2019 Creative Commons (CC BY)

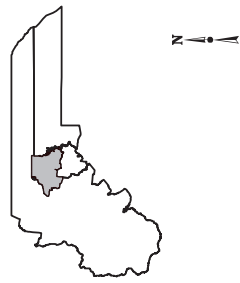
**PROPOSED DIVISIONAL  
BOUNDARIES**

**WHITSUNDAY REGIONAL  
Division 5**

**LEGEND**

- Proposed Division Boundary
- Proposed Adjacent Division
- Locality Boundary
- Adjacent Council
- Reserve, Parkland
- Waterbody
- Railway
- Main Road
- Welland

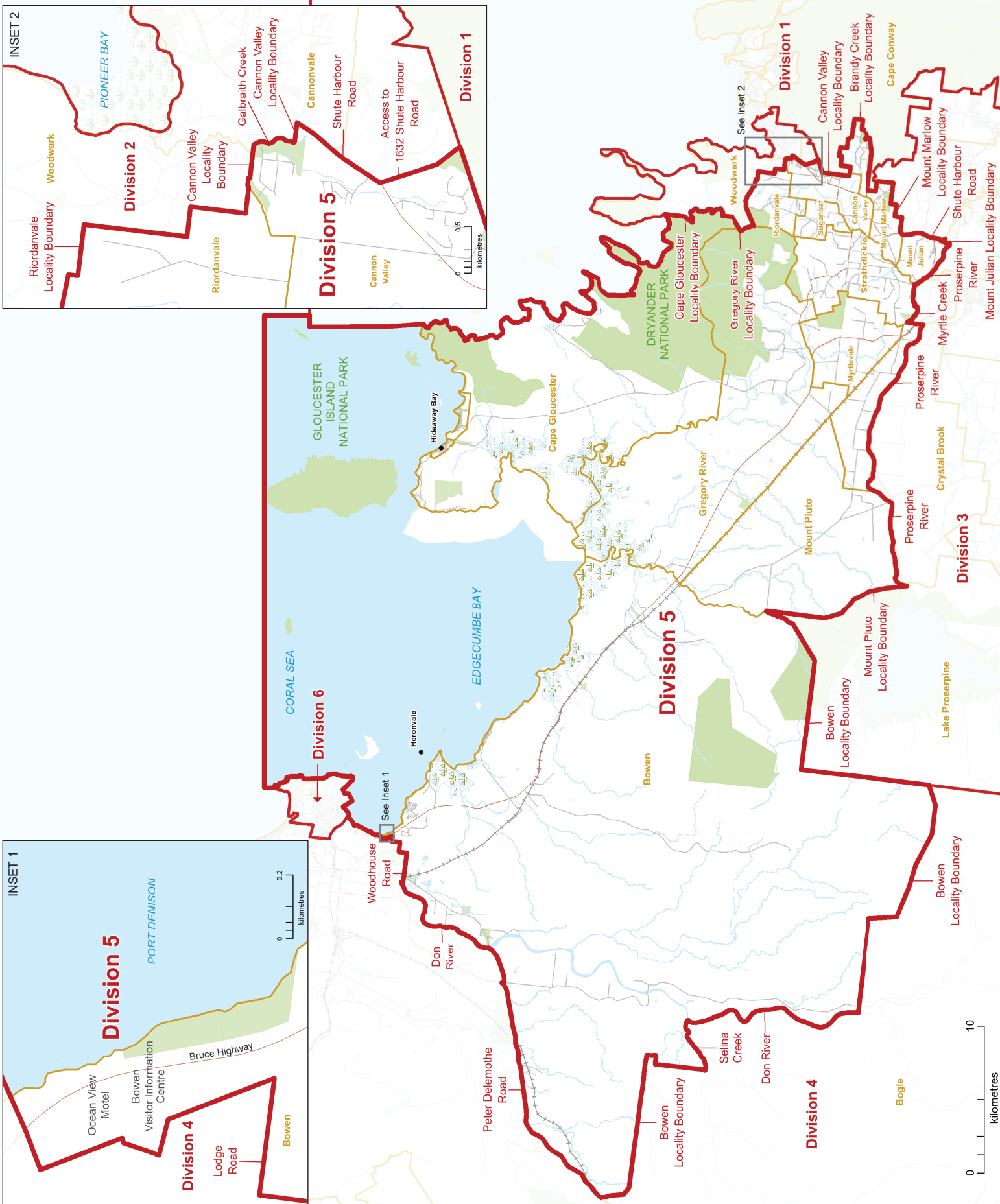
Location Map  
DIVISION 5

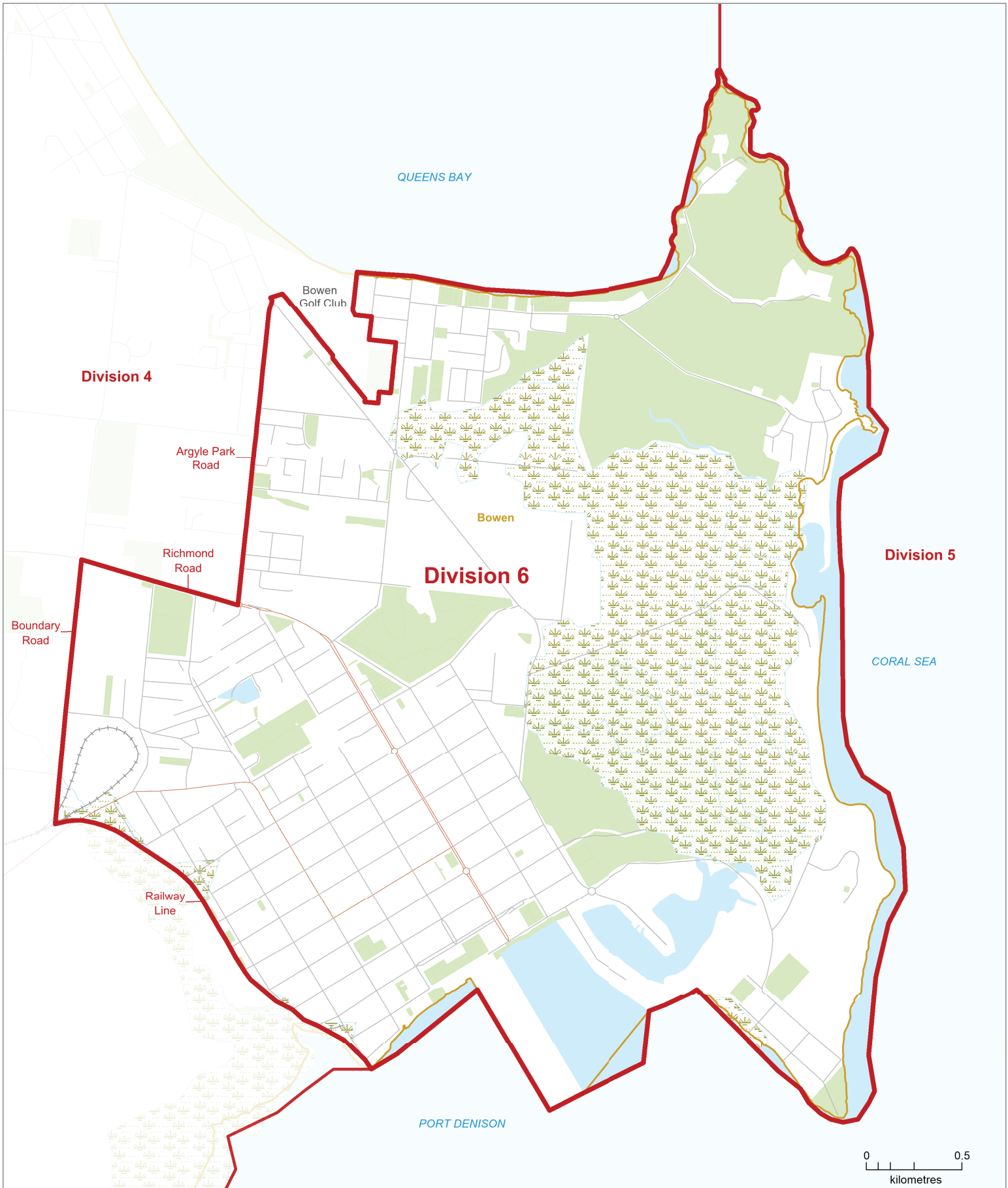


This product was created using datasets from various authoritative sources, and is intended as a guide only to display proposed divisional boundaries.

The digital GIS data is available FREE to download from Queensland Spatial Catalogue or QSpatial, at <http://qdsportal.information.qld.gov.au>

© The State of Queensland - 2019 (Department of Natural Resources, Mines and Energy)  
© Electoral Commission of Queensland 2019  
Creative Commons (CC BY)





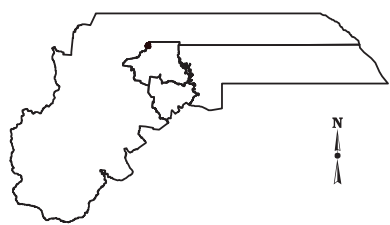
**2019**  
**Local Government Area**  
**Divisional Boundary Review**

**PROPOSED DIVISIONAL BOUNDARIES**

**WHITSUNDAY REGIONAL**  
**Division 6**



Location Map  
 DIVISION 6



**LEGEND**

	Proposed Division Boundary		Reserve, Parkland
	Proposed Adjacent Division		Waterbody
	Locality Boundary		Railway
	Adjacent Council		Main Road
			Wetland

This product was created using datasets from various authoritative sources, and is intended as a guide only to display proposed divisional boundaries.

The digital GIS data is available FREE to download from Queensland Spatial Catalogue, or Qspatial, at <http://qldspatial.information.qld.gov.au>

© The State of Queensland - 2019 (Department of Natural Resources, Mines and Energy)  
 © Electoral Commission of Queensland 2019 Creative Commons (CC BY)

# LOCAL GOVERNMENT CHANGE COMMISSION

---

W: [www.ecq.qld.gov.au](http://www.ecq.qld.gov.au)

E: [LGCCsubmissions@ecq.qld.gov.au](mailto:LGCCsubmissions@ecq.qld.gov.au)

T: 1300 881 665

P: Local Government Change Commission  
GPO Box 1393  
BRISBANE QLD 4001