

Review of Divisional Boundaries

2019 PROPOSED DETERMINATION
CASSOWARY COAST REGIONAL COUNCIL

Contents

INTRODUCTION	3
Endorsement of proposal	3
THE REVIEW PROCESS	4
Determining the quota	4
CURRENT BOUNDARIES & ENROLMENT	5
Table 1 – Current and Projected Council Quota	5
Table 2 – Current and Projected Enrolment for the Existing Electoral Divisions	5
PUBLIC SUGGESTIONS.....	6
THE PROPOSED BOUNDARIES	6
Table 3 – Current and Projected Enrolment for the Proposed Electoral Divisions	6
Division 1	7
Division 2	7
Division 3	7
Division 4	7
Division 5	7
Division 6	8
COMMENTS ON THE PROPOSAL INVITED	8
FINALISING THE REVIEW	8
IMPLEMENTATION	9

APPENDIX A	Minister’s Referral
APPENDIX B	Public Suggestions
APPENDIX C	Maps

INTRODUCTION

The *Local Government Act 2009 (Qld)* (the Act) provides for a Local Government Change Commission (Change Commission). The Change Commission is responsible for periodically reviewing the internal boundaries of divided councils so that each division has relatively the same number of enrolled voters. This upholds the key democratic principle of 'one vote, one value', by ensuring each person's vote carries the same weight.

On 26 March 2019, the Minister for Local Government, Minister for Racing and Minister for Multicultural Affairs, The Honourable Stirling Hinchliffe MP referred a divisional boundary review of the Cassowary Coast Regional Council (see Appendix A).

The Change Commission for this review consists of:

- Mr Pat Vidgen, Electoral Commissioner;
- Ms Jennifer Lang, Casual Commissioner; and
- Mr Wade Lewis, Casual Commissioner.

The casual commissioners were appointed by the Governor in Council on 1 November 2018.

Endorsement of proposal

This report outlines the Change Commission's proposed boundaries for the electoral divisions of the Cassowary Coast Regional Council.



Pat Vidgen PSM
Electoral Commissioner



Jennifer Lang
Casual Commissioner



Wade Lewis
Casual Commissioner

THE REVIEW PROCESS

The Change Commission must ensure each division of the Council has a reasonable proportion of enrolled voters, herein referred to as 'quota'. Where possible, community interests, public submissions and easy-to-identify boundaries are also considered.

Assessments are conducted in any way the Change Commission deems appropriate, unless the Minister has provided specific directions.

The process for the divisional boundary review of Cassowary Coast is as follows:

1. Invite suggestions
2. Publish the Change Commission's proposal
3. Invite comments on the proposal
4. Publish the Change Commission's final determination report
5. Final determination report provided to the Minister for Local Government, for implementation by the Governor in Council
6. New boundaries come into effect at the 2020 Local Government Quadrennial Election

Determining the quota

A quota is determined by dividing the total number of enrolled voters by the number of councillors (other than the mayor), plus or minus 10%. The Change Commission also considers projected enrolment, so the divisions remain in quota for as long as possible.

Current enrolment data has been sourced from Queensland's electoral roll and projected enrolment data from the Queensland Government Statistician's Office of Queensland Treasury. Projections are based on the timing of future local government quadrennial elections.

Enrolment information is organised around 'Statistical Areas Level 1 (SA1)'. SA1s are geographical units used by the Australian Bureau of Statistics (ABS) for the release of census data. According to the ABS most SA1s have a population of between 200 to 800 persons with an average population of approximately 400 people.

Current and projected enrolment data are available for download on the Electoral Commission of Queensland's (ECQ) website.

CURRENT BOUNDARIES & ENROLMENT

The Cassowary Coast Regional Council has 19,155 voters and is divided into six single-member electoral divisions plus a mayor. Table 1 shows the Council's current enrolment quota as at 31 January 2019 and the quota projected for 31 March 2024.

Table 2 shows the current and projected enrolment for the Council's existing divisional boundaries. As at 31 January 2019, Division 3 was out of quota and it is projected to be further out of quota by 2024.

Table 1 – Current and Projected Council Quota		
	31 January 2019	31 March 2024
Number of divisions	6	6
Enrolment	19,155	19,618
Quota per division	3,193	3,270
Quota (+10%) per division	3,512	3,597
Quota (-10%) per division	2,873	2,943

Table 2 – Current and Projected Enrolment for the Existing Electoral Divisions				
Division	Enrolment as at 31/01/2019	(%) Deviation from Quota	Projected Enrolment as at 31/03/2024	(%) Deviation from Quota
Division 1	3,234	1.3	3,330	1.85
Division 2	3,016*	-5.53	3,086	-5.62
Division 3	3,731*	16.87	3,893	19.06
Division 4	3,087	-3.3	3,125	-4.42
Division 5	3,124	-2.15	3,179	-2.77
Division 6	2,963	-7.19	3,005	-8.09
<p>* Note: An anomaly was identified during the modelling process, where five voters had been allocated to Division 2, when they are in Division 3. This table has assigned these five voters to their correct division and the documentation on the ECQ website has been updated.</p>				

PUBLIC SUGGESTIONS

The Change Commission sought public suggestions to assist in developing its proposal. Advertisements were placed in The Courier-Mail, a local newspaper and on the ECQ's social media platforms.

Suggestions were invited from 27 April 2019 to 5pm 13 May 2019. Eight submissions were received and are available to view on the ECQ website or at Appendix B.

One submission requested the abolition of divisions and discussed the voting systems at local government elections. This is out of the scope of this review and was unable to be considered.

A key theme identified in most of the submissions was the importance of uniting the Mission Beach (postcode 4852) area in Division 3. The suburb of Carmoo was mentioned specifically in numerous suggestions as an area with significant linkages to the beach community. Four submissions also recommended transferring El Arish and the surrounding suburbs outside postcode 4852 out of Division 3 to reduce its enrolment.

The Change Commission agreed with the suggestions and has proposed boundaries with those community interests in mind.

THE PROPOSED BOUNDARIES

The proposed boundaries for the Cassowary Coast Regional Council are detailed below. They bring enrolment in each division into quota and the Change Commission has made a concerted effort to unite suburbs and their communities of interest within individual divisions.

Table 3 shows the current and projected enrolment for the proposed electoral divisions. Maps of the proposed divisions are in Appendix C and interactive maps are available to view on the ECQ website.

Table 3 – Current and Projected Enrolment for the Proposed Electoral Divisions				
Division	Enrolment as at 31/01/2019	(%) Deviation from Quota	Projected Enrolment as at 31/03/2024	(%) Deviation from Quota
Division 1	3,103	-2.8	3,178	-2.8
Division 2	3,316	3.87	3,390	3.68
Division 3	3,278	2.68	3,455	5.67
Division 4	3,087	-3.3	3,125	-4.42
Division 5	3,124	-2.15	3,179	-2.77
Division 6	3,247	1.71	3,291	0.65

Division 1

In consideration of the public suggestions, a few changes are proposed to Division 1 so that the boundaries unite suburbs and reflect communities of interest.

The Change Commission proposes the following changes. The Division:

- a. Transfers the balance of the South Mission Beach, Tam O'Shanter and Carmoo suburbs so they are entirely contained in Division 3; and
- b. Transfers the remainder of the Djarawong suburb to Division 2.

The proposed Division has 3,103 voters which is -2.8% below quota and is predicted to have 3,178 voters by 2024 which would be -2.8% below quota.

Division 2

Changes for Division 2 follow suburb boundaries and are based on feedback from the public suggestions.

The Change Commission proposes the following changes. The Division:

- a. Gains the remaining portion of the Djarawong suburb from Division 1;
- b. Gains the remainder of the El Arish suburb and the entirety of the Friday Pocket, Granadilla and Maria Creeks suburbs from Division 3; and
- c. Transfers its portions of the Warrubullen, Moresby and Boogan suburbs to Division 6.

The proposed Division has 3,316 voters which is 3.87% above quota and is predicted to have 3,390 voters by 2024 which would be 3.68% above quota.

Division 3

Several changes are proposed to reduce the number of voters in Division 3, while improving enrolment in neighbouring Division 6. The changes considered public suggestions regarding the Mission Beach / postcode 4852 (Carmoo) community interests.

The Change Commission proposes the following changes. The Division:

- a. Gains the balance of South Mission Beach suburb and the entirety of Tam O'Shanter and Carmoo suburbs from Division 1;
- b. Transfers the remainder of the El Arish suburb and the entirety of the Friday Pocket, Granadilla and Maria Creeks suburbs to Division 2; and
- c. Transfers the entire Sandy Pocket, Cowley Creek, Cowley, Lower Cowley and Cowley Beach suburbs and its portions of the Moresby and Warrubullen suburbs to Division 6.

The proposed Division has 3,278 voters which is 2.68% above quota and is predicted to have 3,455 voters by 2024 which would be 5.67% above quota.

Division 4

Between Divisions 2 and 4, the boundary has been slightly realigned to continuously follow the South Johnstone River.

Division 5

No change is proposed for Division 5.

Division 6

Division 6 has expanded both south and west to improve its enrolment figures and that of the neighbouring Division 3.

The Change Commission proposes the following changes. The division:

- a. Gains the entirety of the Moresby and Warrubullen suburbs from Divisions 2 and 3, and the remainder of the Boogan suburb from Division 2; and
- b. Gains the Sandy Pocket, Cowley Creek, Cowley, Lower Cowley and Cowley Beach suburbs from Division 3.

The proposed division has 3,247 voters which is 1.71% above quota and is predicted to have 3,291 voters by 2024 which would be 0.65% above quota.

COMMENTS ON THE PROPOSAL INVITED

Comments on this proposal are invited until 5pm, 8 July 2019 and can be lodged through:

Online Form

<https://ecq.qld.gov.au/lgr/cassowarycoast>

Email

LGCCsubmissions@ecq.qld.gov.au

Personal Delivery

Electoral Commission of Queensland
Level 20, 1 Eagle Street
BRISBANE QLD 4000

Post

Local Government Change Commission
GPO Box 1393
BRISBANE QLD 4001

It is recommended that those submitting comments:

- consider the enrolment requirements outlined in the Act and in this report;
- clearly state which division/s your comment relates to;
- provide supporting information for why you support or oppose a proposed boundary change or public submission; and
- if you oppose a change, provide alternative boundary suggestions and reasoning.

FINALISING THE REVIEW

After reviewing the public comments on the proposal, the Change Commission will make a final determination on the Council's divisional boundaries.

The results of a Change Commission review must be provided to the Minister for Local Government. A notice of results is published in a local newspaper, the Queensland Government Gazette and on the ECQ website.

A decision of the Change Commission is not subject to appeal.

IMPLEMENTATION

A local government change can only be implemented by the Governor in Council under a regulation.

The regulation may provide for anything that is necessary or convenient to facilitate the change.

APPENDIX A

Minister's Referral



Minister for Local Government,
Minister for Racing and
Minister for Multicultural Affairs

Our ref: MC19/1141

26 MAR 2019

1 William Street
Brisbane Queensland 4000
PO Box 15009
City East Queensland 4002
Telephone +61 7 3719 7560
Email lgrma@ministerial.qld.gov.au
Website www.dlgrma.qld.gov.au

ABN 65 959 415 158

Mr Pat Vidgen PSM
Electoral Commissioner
Electoral Commission Queensland
GPO Box 1393
BRISBANE QLD 4001

Dear Pat

I am writing to you in relation to a Local Government divisional review that was undertaken by the Cassowary Coast Regional Council in preparation for the 2020 Local Government quadrennial elections.

I have received correspondence from Mr James Gott, Chief Executive Officer of the Council dated 7 February 2019 advising of the results of the review, including that the projected number of electors in 2020 would be out of the quota of a reasonable proportion of electors as required by the *Local Government Act 2009* (the Act) in Division 3, with 16.7 per cent of the total number of electors more than the divisional average.

Division 3 of the Council includes the communities of South Mission Beach, Wongaling Beach, El Arish, Mission Beach, Bingle Bay, Cowley Beach and Silkwood East, all of which were severely impacted by Tropical Cyclone Yasi in 2011. The population of these centres declined after this event but appear to now be recovering.

There are no significant developments planned or underway for the Cassowary Coast Regional Council Division 3 at present. However, areas within the Division have been identified for future development and vacant land is available for building at attractive prices.

The proposed Ella Bay integrated resort development in Division 5, at a 470 hectare site, 10 kilometres northeast of Innisfail, is a \$1.4 billion project and has received preliminary material change of use approval from the Council, with multiple further approvals necessary for the project to proceed. If the project does proceed, it is planned for completion over 15 years. This may result in population increases in that division in the future.

On 27 February 2019, I received further correspondence from Mr Gott, informing me that at a Special Council Meeting on 26 February 2019, the Council passed a resolution that it would remain with the current arrangement of six divisions. In view of this resolution, a review of divisional boundaries within the Cassowary Coast Region is required to bring all divisions in line with the reasonable proportion of electors, in accordance with section 15 of the Act.

Section 18 of the Act provides that I may apply to the Local Government Change Commission (Change Commission) for an assessment of a proposed Local Government change. Further, under section 19 of the Act, the Change Commission must consider whether the Local Government change is consistent with the Act and must consider my views on any proposed changes.

I consider it appropriate to refer the matter to you for independent assessment and determination by the Change Commission. I recommend the Change Commission consider the potential future population increases in Divisions 3 and 5 as described above when undertaking its assessment review.

I have asked for Mr Daniel Westall, Manager Governance, Local Government Division in the Department of Local Government, Racing and Multicultural Affairs to assist you with any further queries. You may wish to contact Mr Westall on [REDACTED] or by email at [REDACTED].

Yours sincerely



STIRLING HINCHLIFFE MP
Minister for Local Government,
Minister for Racing and
Minister for Multicultural Affairs

APPENDIX B

Public Suggestions

List of Public Suggestions
Divisional Boundary Review of Cassowary Coast Regional Council

Suggestion	Name / Organisation
1	Kim Badcock
2	Pete Faulkner, President, Mission Bay Community Association (MBCA)
3	Truus Biddlecombe
4	Les Cavanagh
5	Rhonda Murdoch
6	Ken Gray, Mission Beach Aquatic & Recreation Club (MBARC) Management Committee
7	David Leotta
8	Amelia

From: noreply@ecq.qld.gov.au
Sent: Saturday, 27 April 2019 2:23 PM
To: LG CC Submissions
Subject: (78639) Cassowary Coast Regional Local Government Area - Mr Kim Badcock

Online submission for **Cassowary Coast Regional Local Government Area** from **Mr Kim Badcock**

Submission Details

Name: Mr Kim Badcock

Submission Text: I suggest that the new boundary for Division 3 should be South of Maria Creek and East of the Bruce Highway and North of East Feluga Road and then North from the Hull River.

File Upload: No file uploaded ()



Mission Beach Community Association

Representing Residents & Ratepayers of the villages of Mission Beach

*Garners Beach • Bingil Bay • Narragon Beach • Mission Beach • Wongaling Beach
Carmoo • South Mission Beach • Tam O'Shanter Point*

Mission Beach Community Association Incorporated

Submission to the Change Commission with regard to Cassowary Coast Regional Council

Mission Beach Community Assn. (MBCA) is the largest community group within the Mission Beach region with a membership base of almost 800. The 'Mission Beach' area falls within Division 3 of the Cassowary Coast Regional Council. Significant population growth in the area, far in excess of that seen elsewhere within the Region, means that Division 3 is now outside of the quota limit.

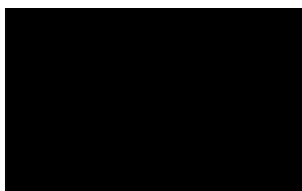
Whilst we understand that the redrawing of divisional boundaries will be a complex exercise and may impact divisions beyond Division 3 there are two matters that we wish to draw to the Commission's attention as they make their deliberations.

- 1. MBCA's members strongly support the continuation of divisional representation in the Local Council.**
This was demonstrated by the recent Council run survey.
- 2. MBCA's members strongly support maintaining all of the 'Mission Beach' area within a single Division.**

The 'Mission Beach' area is generally understood to include South Mission Beach, Wongaling Beach, Mission Beach, Narragon Beach, Bingil Bay, Garners Beach and Maria Creeks areas. Carmoo, which currently sits within Division 1, is also generally seen as 'Mission Beach' and we would support its inclusion into any new Division. For many years, prior to the amalgamation of the old Cardwell and Johnstone Shire Councils, Mission Beach was disadvantaged by not having a single unified voice in either Council and that is certainly not a situation that we would wish to see repeated. These areas, unlike many which surround them, are largely tourism-based destinations and tend to have similar concerns and issues which benefit from a single voice within Council.

Thank you.

Yours faithfully,



Pete Faulkner
President

Mission Beach 4852
Email: [Redacted]
Website: <http://4852mbca.com>

From: noreply@ecq.qld.gov.au
Sent: Monday, 29 April 2019 2:03 PM
To: LG CC Submissions
Subject: (78650) Cassowary Coast Regional Local Government Area - Truus Biddlecombe

Online submission for **Cassowary Coast Regional Local Government Area** from **Truus Biddlecombe**

Submission Details

Name: Truus Biddlecombe

Submission Text: I believe Mission Beach, all of postcode 4852, should be one Division i.e. Division 3. El Arish could go to Division 2 and Kurrimine and Cowley Beach to Division 6 to make up for the lower numbers there.

File Upload: No file uploaded ()

From:
Les Cavanagh
[REDACTED]
Germantown QLD 4871

To:
Electoral Commission of Queensland

Re:
Cassowary Coast Regional Council (CCRC) Divisional Boundary Review (DBR)

Please consider the following changes for the current CCRC DBR:

1. Include the area between the South Johnstone River and Silkwood into Division 4.
This includes the following suburbs:
Camp Creek
No 6 Branch
Germantown
Mena Creek
Utchee Creek
Moresby
Boogan
Warrubullen
Bombeeta
Japoonvale
Walter Lever Estate
No 5 Branch
Silkwood
No 4 Branch
2. Include Division 3 areas close to the Bruce Highway into Division 2
This includes the following suburbs:
El Arish
Maria Creeks
Friday Pocket
Granadilla

The above suggestions take into consideration the way these communities live with the northern part of Division 2 mostly working/shopping etc in the Innisfail area and the southern part mostly working/shopping in Tully.

This would also improve access to Division councillor and likely representation for the area currently in the north of Division 2.

Thank You for considering this suggestion.

Kind Regards,
Les Cavanagh

e. [REDACTED]
p. [REDACTED]

From: noreply@ecq.qld.gov.au
Sent: Tuesday, 30 April 2019 1:02 PM
To: LG CC Submissions
Subject: (78660) Cassowary Coast Regional Local Government Area - Rhonda Murdoch

Online submission for **Cassowary Coast Regional Local Government Area** from **Rhonda Murdoch**

Submission Details

Name: Rhonda Murdoch

Submission Text: The natural boundary as determined by access from the Bruce Highway for Division 3 is the triangle formed from El Arish turn-off (exit from north) and Tully (exit from south) and encompassing the communities in postcode 4852. Postcode 4852 takes in Bingil Bay, Narragon Beach, Mission Beach, Wongaling Beach, South Mission Beach and Carmoo). Redistributing communities in the current Division 3 such as Cowley Beach, Kurrimine Beach and El Arish (those that do not have postcode 4852) would hopefully re balance the enrolled voters to comply within the maximum of just over 3,800 for the next 2 electoral cycles. This community (postcode 4852) lobbied very strongly to resolve the split caused by the division between the former Cardwell & Johnstone shires which was effectively resolved with the amalgamation of the 2 shires into Cassowary Coast Regional Council. It would be a devastating and retrograde step to divide the electoral representation again. The community voted strongly to retain Divisional representation -vs- undivided representation to expressly ensure that it has a Councillor who is dedicated to understanding the specific interests of a community bound by common interests.

File Upload: No file uploaded ()

Electoral Commission of Queensland
 Local Government Change Commission
 Division Boundary Review Cassowary Coast Regional Council

Change Commission Panel,

Thanks for the opportunity for input.

We seek to have "greater Mission Beach" residents remain in one division please.

I submit this on behalf of the Mission Beach Aquatic & Recreation Club which is the local community organization that worked for its community to achieve funding for our recently built Aquatic Centre. We are followed by over 2,100 people on Facebook and have around 750 members.

We believe the Cassowary Coast Regional Council should maintain electoral divisions because the region essentially has four main population nodes with quite different economies: Cardwell (1,600 residents at 2016 census), Tully (3,000), Innisfail (11,200) and Mission Beach (4,000).

As is evident in the Division data, Mission Beach is growing faster than other towns in this region.

I was researcher for 15 years for this community group and conducted many studies of the residents and their needs and aspirations. We found that people who identify as living in "Mission Beach area" live in the following SA1 catchment areas:

311 6004 Bingil Bay; 311 6009 Maria Creeks; 311 6104 Family Islands Group (including Bedarra Island); 311 6110 and 311 6111 Mission Beach; 311 6112, 311 6113, and 311 6114 Wongaling Beach; 311 6115 back of Hull River; 311 6120 and 311 6124 South Mission Beach and 311 6125 Carmoo.

These areas are largely driven by the tourism economy whereas areas beyond this town are more reliant on agriculture.

If we add up all your enrolment projections for these areas (March 2024 from your Excel spread sheet) we get 3,139 people. That means that it is possible to have Mission Beach as it's own Division (Division 3) and the Division would be close to 100% of the target count.

Mission Beach was disadvantaged severely before 2008 because it was split between two LGA's (Cardwell and Johnston Shires). That left us with no effective voice to advocate for our people. As a consequence, Mission Beach has struggled to catch up with the other three towns in the region in terms of infrastructure equality. There is still a large gap between the infrastructure available in each town, especially sports and recreation facilities, and it would return us to a state of considerable disadvantage if we could not maintain a voice for Mission Beach and its tourist economy.

As it stands there is one Division for Cardwell (1), one for Tully (2), one for Mission Beach (3) and three for Innisfail and surrounding areas. That arrangement should be retained if possible.

It makes sense to keep Mission Beach all in one electoral division to help us bridge the infrastructure gap over time. Please retain the region's second biggest town in one division.

Ken Gray

MBARC Management Committee [REDACTED], 07 [REDACTED]

28 April 2019

From: noreply@ecq.qld.gov.au
Sent: Tuesday, 30 April 2019 8:14 PM
To: LG CC Submissions
Subject: (78665) Cassowary Coast Regional Local Government Area - David Leotta

Online submission for **Cassowary Coast Regional Local Government Area** from **David Leotta**

Submission Details

Name: David Leotta

Submission Text: I would like to see divisions abolished. Also I would like to see no voting for a Mayor as that automatically disqualifies some of the better class of candidates if they are unsuccessful. I would prefer to vote for the Councillors and them to vote for Mayor etc.

File Upload: No file uploaded ()

From: noreply@ecq.qld.gov.au
Sent: Saturday, 4 May 2019 8:03 PM
To: LG CC Submissions
Subject: (78686) Cassowary Coast Regional Local Government Area - Amelia

Online submission for **Cassowary Coast Regional Local Government Area** from **Amelia**

Submission Details

Name: Amelia

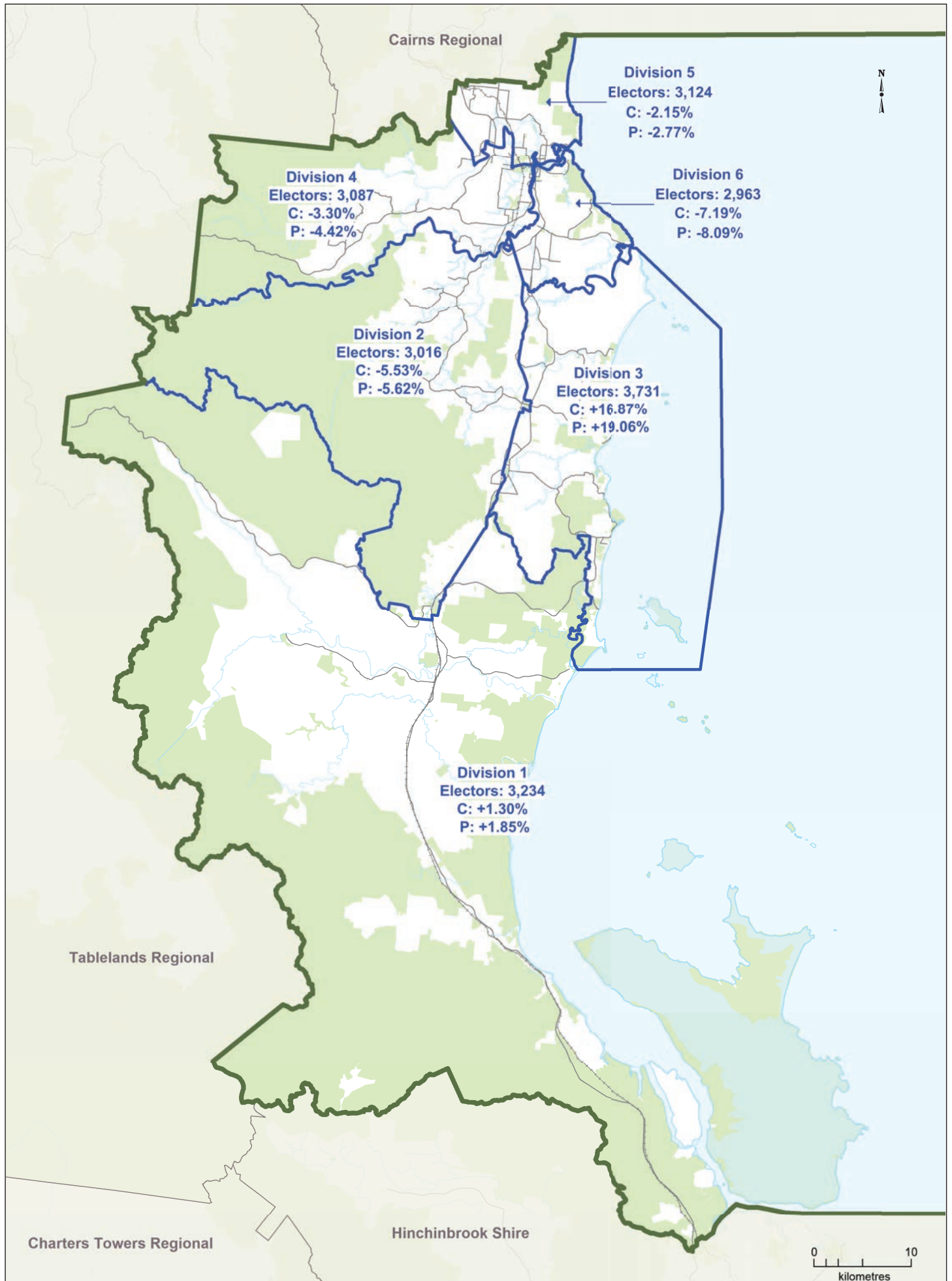
Submission Text: Division 3 should be shrunk to cover only 'Mission Beach'. The area covering Bingil Bay, Mission Beach, Wongaling, South Mission and Carmoo is a discrete community and should form the boundary for this division. The community has limited connection to Kurramine Beach which is connected to Silkwood. El Arish is more connected to Tully.

File Upload: No file uploaded ()

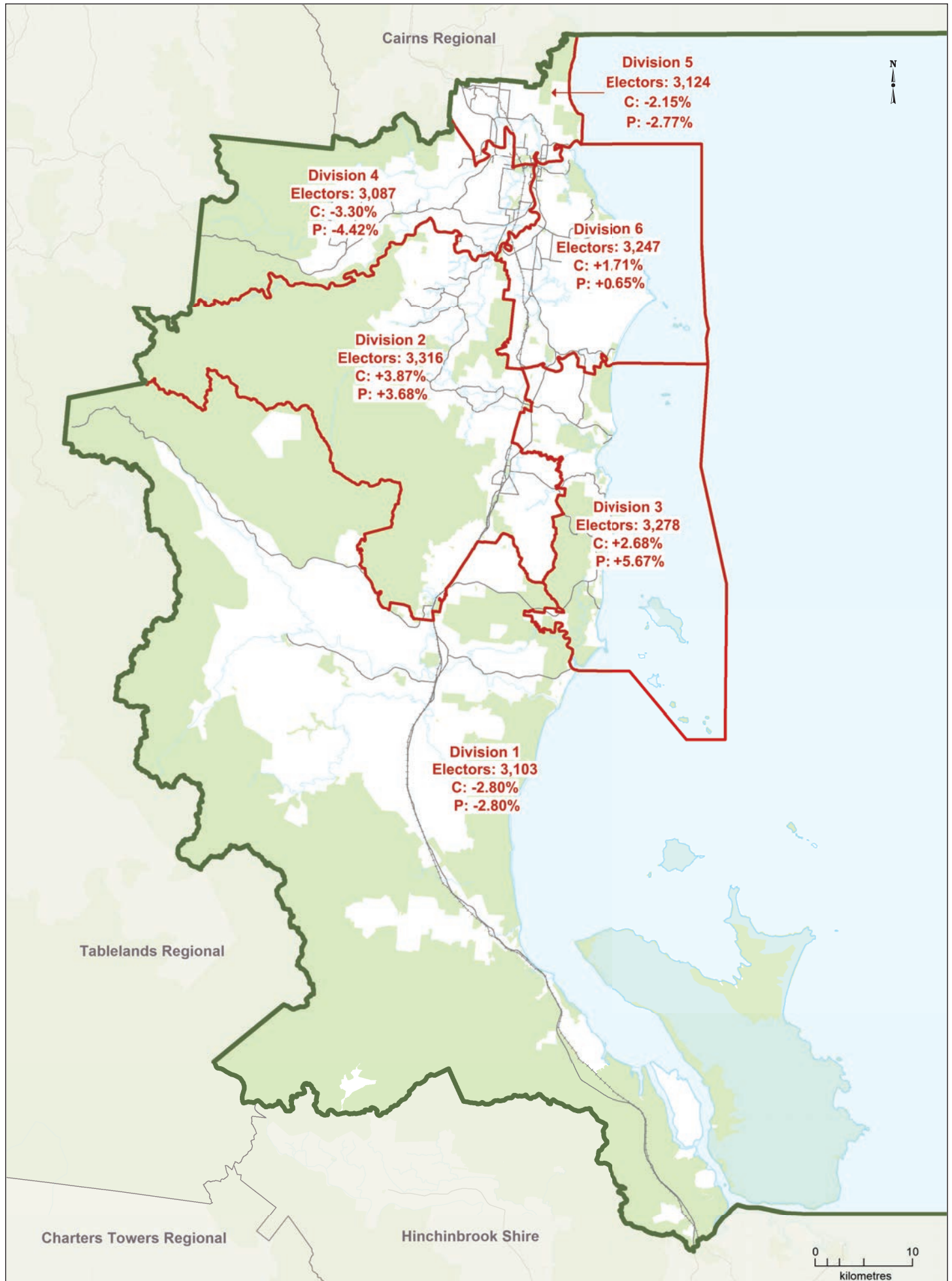
APPENDIX C

Maps

CASSOWARY COAST REGIONAL Existing Electoral Divisions

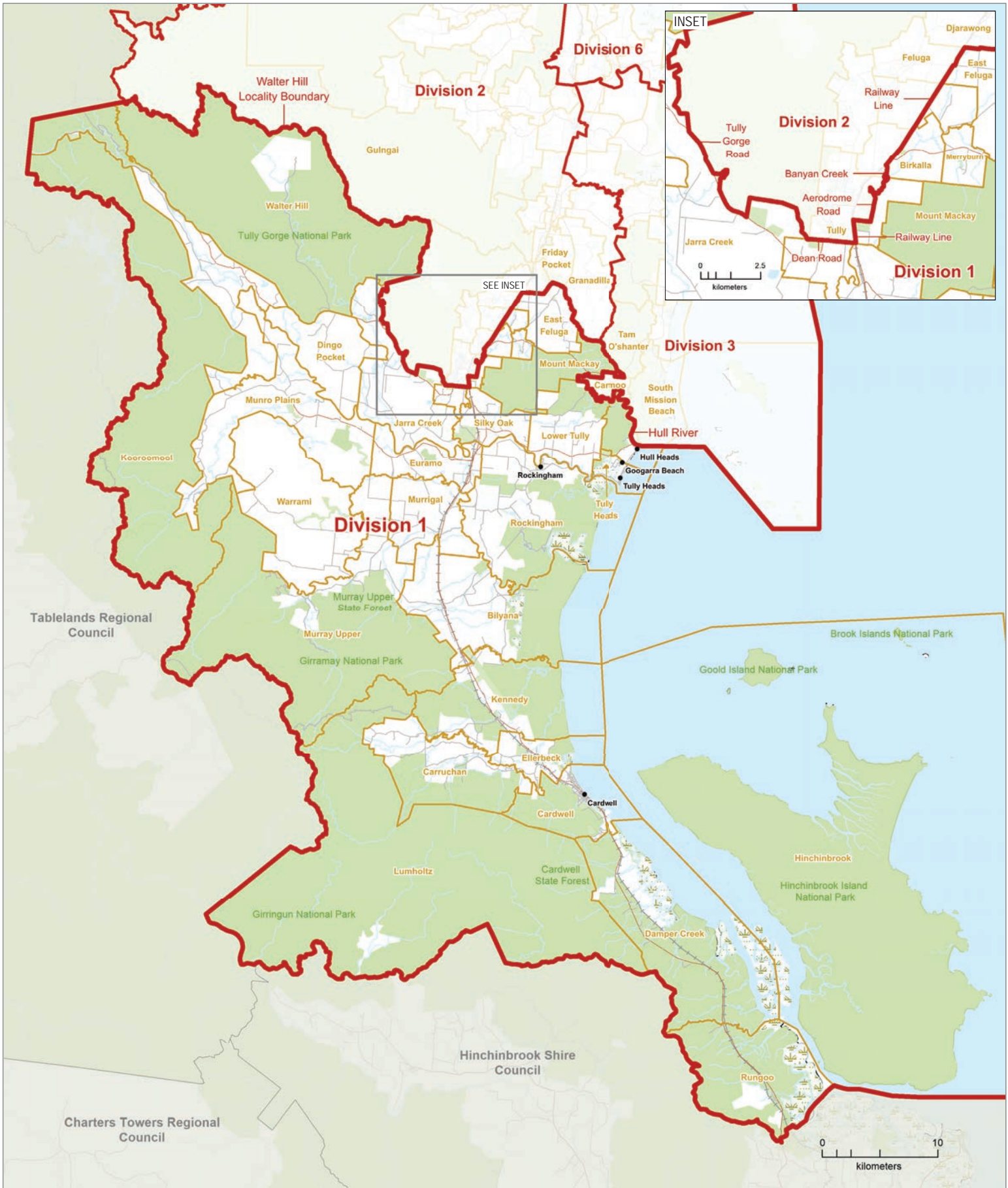


CASSOWARY COAST REGIONAL Proposed Electoral Divisions



 Council Boundary
 Proposed Division Boundary
 Adjacent Council
 Park/Reserve
 — Watercourse/Waterbody
 — Major Roadway

This product was created using datasets from various authoritative sources, and is intended as a guide only to display current divisional boundaries.
 The digital GIS data is available FREE to download from Queensland Spatial Catalogue, or Qspatial, at <http://qldspatial.information.qld.gov.au>
 © The State of Queensland - 2019 (Department of Natural Resources, Mines and Energy), © Electoral Commission of Queensland 2019, Creative Commons (CC BY)



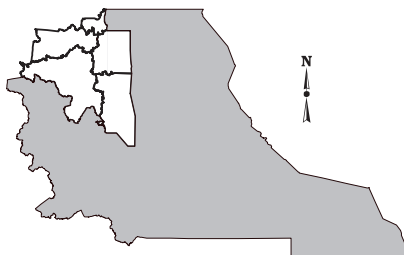
**2019
Local Government Area
Divisional Boundary Review**

PROPOSED DIVISIONAL BOUNDARIES

**CASSOWARY COAST REGIONAL
DIVISION 1**



Location Map
DIVISION 1



LEGEND

	Proposed Division Boundary		Reserve, Parkland
	Proposed Adjacent Division		Waterbody
	Locality Boundary		Railway
	Adjacent Council		Main Road
			Wetland

This product was created using datasets from various authoritative sources, and is intended as a guide only to display proposed divisional boundaries.

The digital GIS data is available FREE to download from Queensland Spatial Catalogue, or Qspatial, at <http://qldspatial.information.qld.gov.au>

© The State of Queensland - 2019 (Department of Natural Resources, Mines and Energy)
© Electoral Commission of Queensland 2019 Creative Commons (CC BY)



2019
Local Government Area
Divisional Boundary
Review

PROPOSED DIVISIONAL
BOUNDARIES

CASSOWARY COAST REGIONAL

Division 2

LEGEND

- Proposed Division Boundary
- Proposed Adjacent Division
- Locality Boundary
- Adjacent Council
- Reserve, Parkland
- Waterbody
- Railway
- Main Road
- Welland

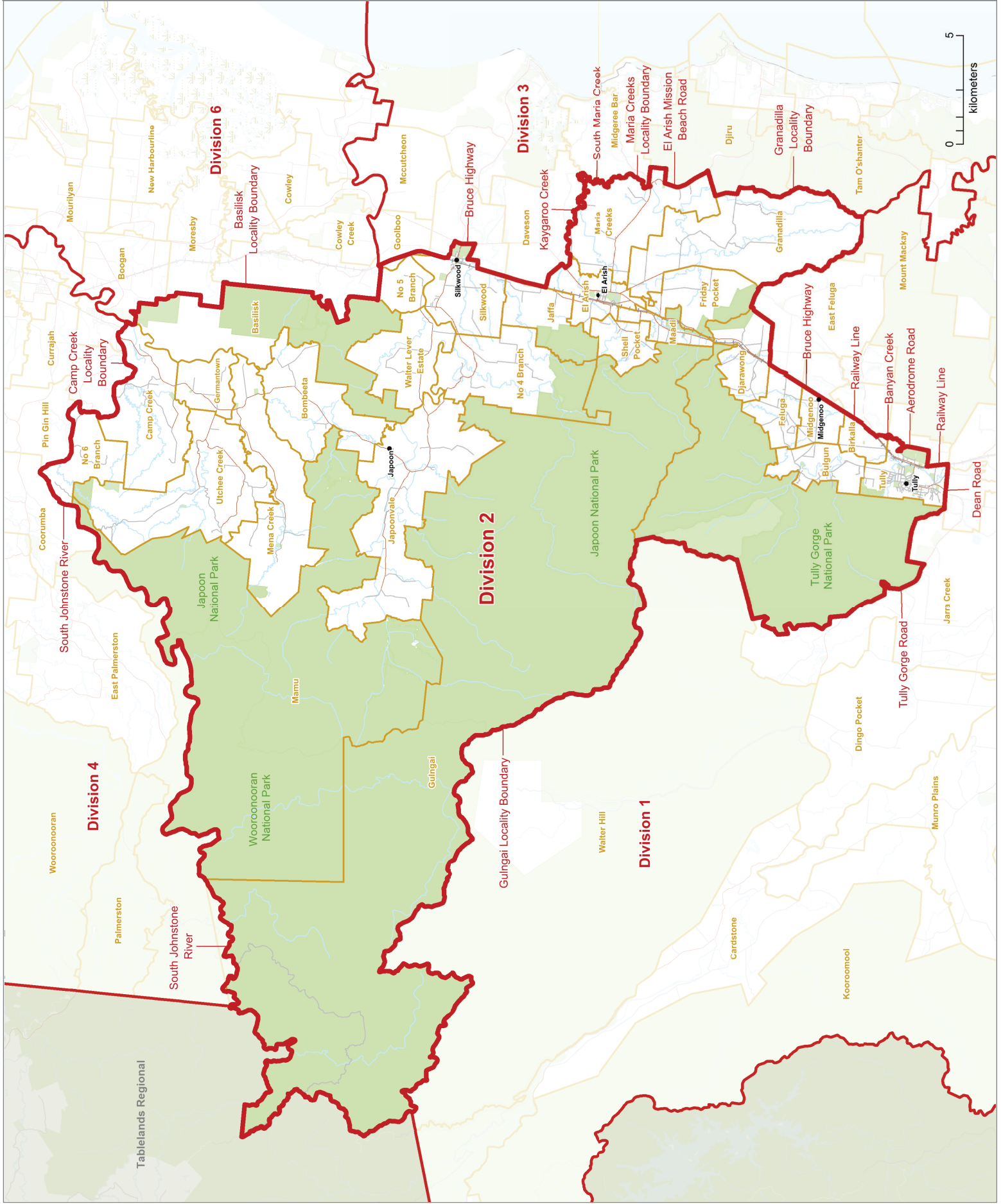
Location Map
Division 2



This product was created using datasets from various authoritative sources, and is intended as a guide only to display proposed divisional boundaries.

The digital GIS data is available FREE to download from the Queensland Spatial Catalogue or Spatial, at <http://qds.spatialinformation.qld.gov.au>

© The State of Queensland - 2019 (Department of Natural Resources, Mines and Energy)
© Electoral Commission of Queensland
Creative Commons (CC BY)





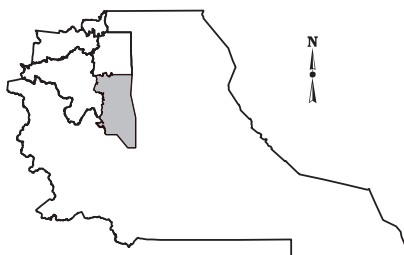
**2019
Local Government Area
Divisional Boundary Review**

PROPOSED DIVISIONAL BOUNDARIES

**CASSOWARY COAST REGIONAL
DIVISION 3**



Location Map
DIVISION 3



LEGEND

	Proposed Division Boundary		Reserve, Parkland
	Proposed Adjacent Division		Waterbody
	Locality Boundary		Railway
	Adjacent Council		Main Road
			Wetland

This product was created using datasets from various authoritative sources, and is intended as a guide only to display proposed divisional boundaries.

The digital GIS data is available FREE to download from Queensland Spatial Catalogue, or Qspatial, at <http://qldspatial.information.qld.gov.au>

© The State of Queensland - 2019 (Department of Natural Resources, Mines and Energy)
© Electoral Commission of Queensland 2019 Creative Commons (CC BY)

PROPOSED DIVISIONAL
BOUNDARIES

CASSOWARY COAST REGIONAL

Division 4

LEGEND



Proposed Division Boundary



Proposed Adjacent Division



Locality Boundary



Adjacent Council



Reserve, Parkland



Waterbody



Railway



Main Road



Wellend

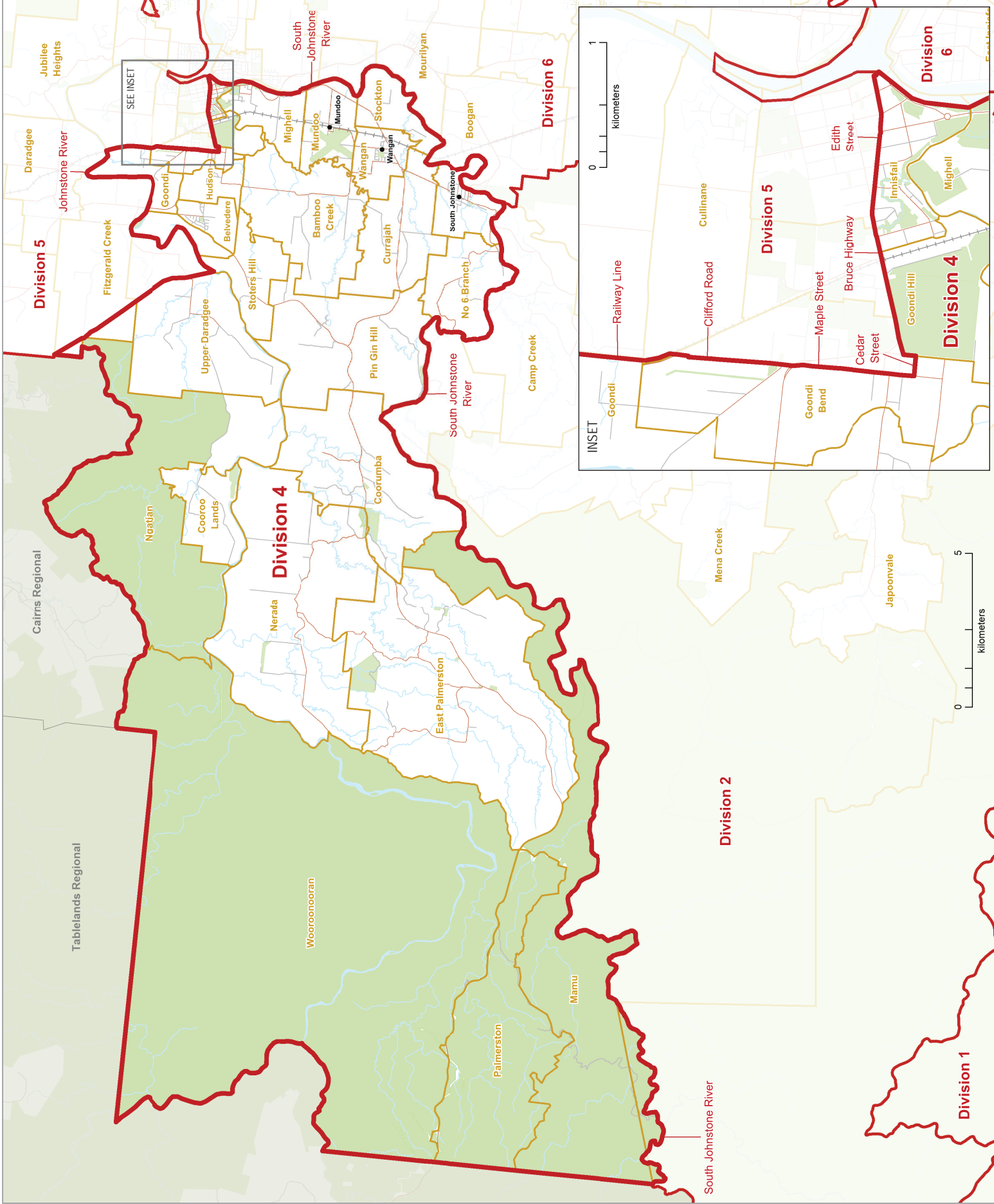
Location Map
Division 4

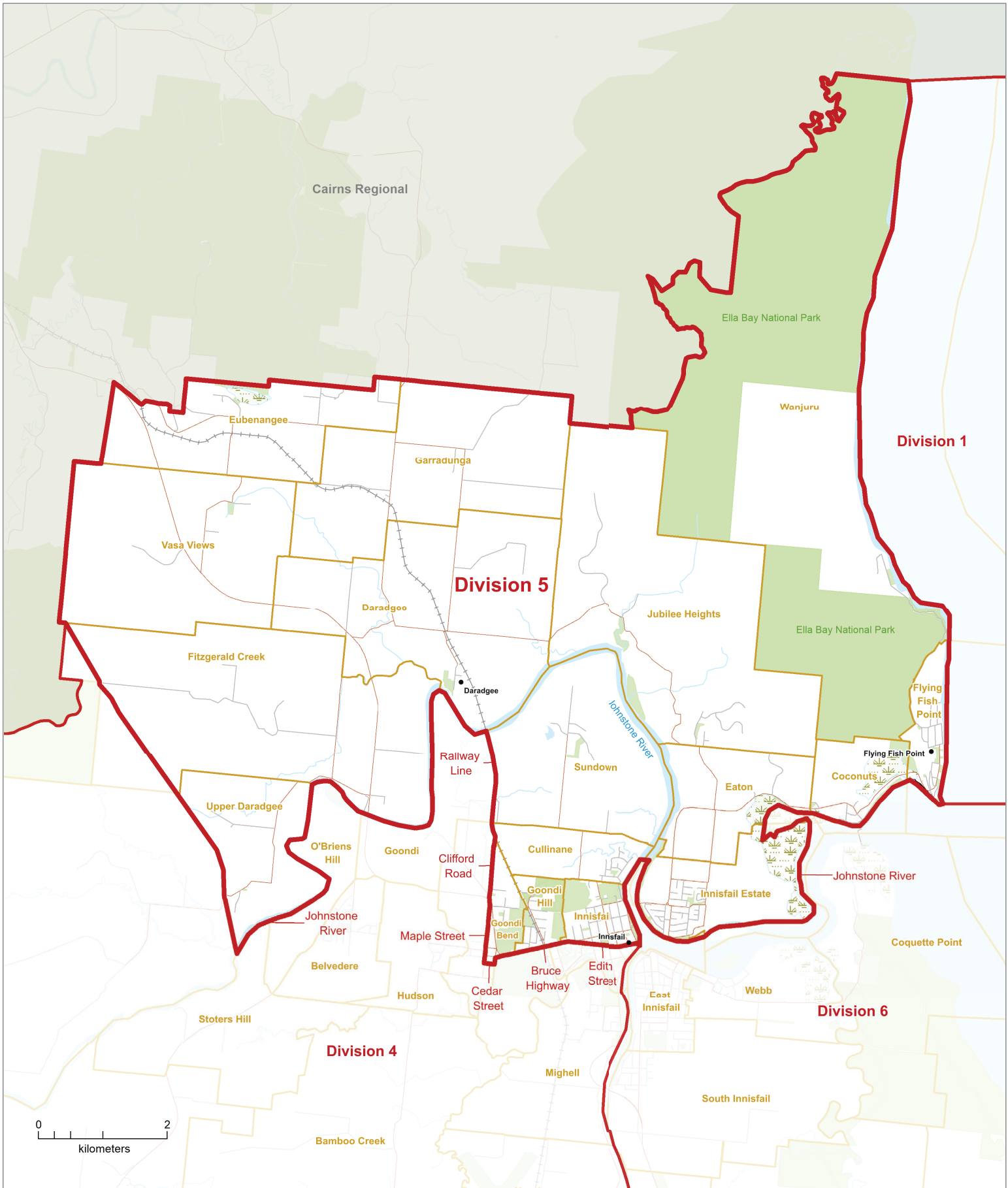


This product was created using datasets from various authoritative sources, and is intended as a guide only to display proposed divisional boundaries.

The digital GIS data is available FREE to download from Queensland Spatial Catalogue or Qspatial, at <http://qdsportal.information.qld.gov.au>

© The State of Queensland - 2019 (Department of Natural Resources, Mines and Energy)
© Electoral Commission of Queensland 2019
Creative Commons (CC BY)

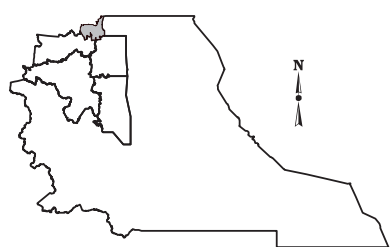




2019
Local Government Area
Divisional Boundary Review
PROPOSED DIVISIONAL BOUNDARIES
CASSOWARY COAST REGIONAL
Division 5



Location Map
 Division 5



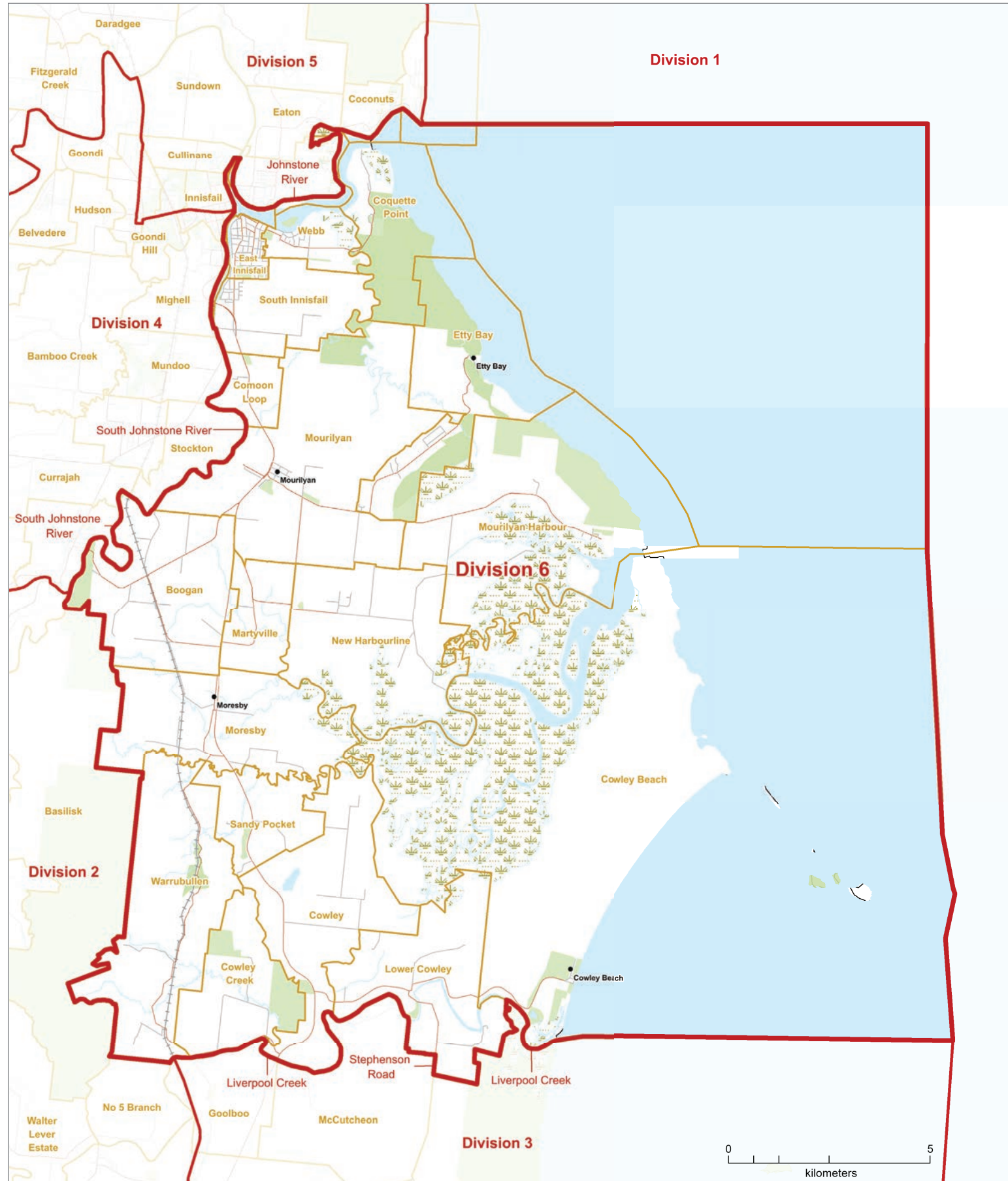
LEGEND

- | | | | |
|--|----------------------------|--|-------------------|
| | Proposed Division Boundary | | Reserve, Parkland |
| | Proposed Adjacent Division | | Waterbody |
| | Locality Boundary | | Railway |
| | Adjacent Council | | Main Road |
| | | | Wetland |

This product was created using datasets from various authoritative sources, and is intended as a guide only to display proposed divisional boundaries.

The digital GIS data is available FREE to download from Queensland Spatial Catalogue, or Qspatial, at <http://qldspatial.information.qld.gov.au>

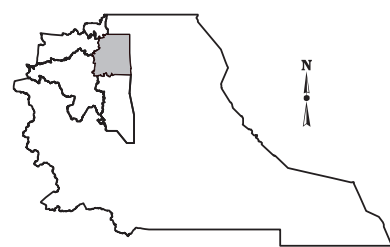
© The State of Queensland - 2019 (Department of Natural Resources, Mines and Energy)
 © Electoral Commission of Queensland 2019 Creative Commons (CC BY)



2019
Local Government Area
Divisional Boundary Review
PROPOSED DIVISIONAL BOUNDARIES
CASSOWARY COAST REGIONAL
Division 6



Location Map
 Division 6



LEGEND

- | | | | |
|--|----------------------------|--|-------------------|
| | Proposed Division Boundary | | Reserve, Parkland |
| | Proposed Adjacent Division | | Waterbody |
| | Locality Boundary | | Railway |
| | Adjacent Council | | Main Road |
| | | | Wetland |

This product was created using datasets from various authoritative sources, and is intended as a guide only to display proposed divisional boundaries.

The digital GIS data is available FREE to download from Queensland Spatial Catalogue, or Qspatial, at <http://qldspatial.information.qld.gov.au>

© The State of Queensland - 2019 (Department of Natural Resources, Mines and Energy)
 © Electoral Commission of Queensland 2019 Creative Commons (CC BY)

LOCAL GOVERNMENT CHANGE COMMISSION

W: www.ecq.qld.gov.au

E: LGCCsubmissions@ecq.qld.gov.au

T: 1300 881 665

P: Local Government Change Commission
GPO Box 1393
BRISBANE QLD 4001