

Review of Divisional Boundaries

2019 PROPOSED DETERMINATION
ROCKHAMPTON REGIONAL COUNCIL

Contents

INTRODUCTION	2
Endorsement of proposal	2
THE REVIEW PROCESS	3
Determining the quota	3
EXISTING BOUNDARIES & ENROLMENT	4
Table 1 – Current and Projected Enrolment Quota	4
Table 2 – Summary of Enrolment for the Existing Divisions	4
PUBLIC SUGGESTIONS	5
THE PROPOSED BOUNDARIES	6
Table 3 – Summary of Enrolment for the Proposed Divisions	6
Division 1	6
Division 2	6
Division 3	7
Division 4	7
Division 5	7
Division 6	8
Division 7	8
COMMENTS ON THE PROPOSAL INVITED	9
FINALISING THE REVIEW	9
IMPLEMENTATION	9

APPENDIX A	Minister’s Referral
APPENDIX B	Suggestions Notice & Public Submissions
APPENDIX C	Maps of the Proposed Divisions

INTRODUCTION

The *Local Government Act 2009 (Qld)* (the Act) provides for a Local Government Change Commission (Change Commission). The Change Commission is responsible for periodically reviewing the internal boundaries of divided councils so that each division has relatively the same number of enrolled voters. This upholds the key democratic principle of 'one vote, one value', by ensuring each person's vote carries the same weight.

On 26 March 2019, the Minister for Local Government, Minister for Racing and Minister for Multicultural Affairs, The Honourable Stirling Hinchliffe MP referred a divisional boundary review of the Rockhampton Regional Council (see Appendix A).

The Change Commission for this review consists of:

- Mr Pat Vidgen, Electoral Commissioner;
- Mr Wade Lewis, Casual Commissioner; and
- Mr Peter McGraw, Casual Commissioner.

The casual commissioners were appointed by the Governor in Council on 1 November 2018.

Endorsement of proposal

This report outlines the Change Commission's proposed boundaries for the electoral divisions of the Rockhampton Regional Council.



Pat Vidgen PSM
Electoral Commissioner



Wade Lewis
Casual Commissioner



Peter McGraw
Casual Commissioner

THE REVIEW PROCESS

The Change Commission must ensure each division of the Council has a reasonable proportion of enrolled voters, herein referred to as 'quota'. Where possible, community interests, public submissions and easy-to-identify boundaries are also considered.

Assessments are conducted in any way the Change Commission deems appropriate, unless the Minister has provided specific directions.

The process for the divisional boundary review of Rockhampton is as follows:

1. Invite suggestions
2. Publish the Change Commission's proposal
3. Invite comments on the proposal
4. Publish the Change Commission's final determination report
5. Final determination report provided to the Minister for Local Government, for implementation by the Governor in Council
6. New boundaries come into effect at the 2020 Local Government Quadrennial Election

Determining the quota

A quota is determined by dividing the total number of enrolled voters by the number of councillors (other than the mayor), plus or minus 10%. The Change Commission also considers projected enrolment, so the divisions remain in quota for as long as possible.

Current enrolment data has been sourced from Queensland's electoral roll and projected enrolment data from the Queensland Government Statistician's Office of Queensland Treasury. Projections are based on the timing of future local government quadrennial elections.

Enrolment information is based on 'Statistical Areas Level 1 (SA1)'. SA1s are geographical units used by the Australian Bureau of Statistics (ABS) for the release of census data. According to the ABS most SA1s have a population of between 200 to 800 persons with an average population of approximately 400 people.

Current and projected enrolment data are available for download on the Rockhampton Regional Council webpage on the Electoral Commission of Queensland's (ECQ) website.

EXISTING BOUNDARIES & ENROLMENT

The Rockhampton Regional Council has 54,140 voters and is divided into seven single-member electoral divisions plus a mayor. Table 1 shows the Council's current enrolment quota as at 31 January 2019 and the quota projected for 31 March 2024.

Table 2 shows the current and projected enrolment for the Council's existing divisional boundaries. As at 31 January 2019, Divisions 2 and 4 were out of quota and in 2024, Divisions 2 and 4 are projected to be further out of quota.

Table 1 – Current and Projected Enrolment Quota		
	31 January 2019	31 March 2024
Number of divisions	7	7
Enrolment*	54,140	56,880
Average enrolment per division*	7,734	8,126
Average enrolment (+10%) per division*	8,507	8,939
Average Enrolment (-10%) per division*	6,961	7,313
* Note: An anomaly was identified during the modelling process, with sixteen voters misallocated. The data in this table has added these voters to the enrolment total and the documentation on the ECQ website has been updated.		

Table 2 – Summary of Enrolment for the Existing Divisions				
Division	Enrolment as at 31/01/2019	(%) Deviation from Average Enrolment	Projected Enrolment as at 31/03/2024	(%) Deviation from Average Enrolment
Division 1	7,878	1.86	8,620	6.08
Division 2	6,868	-11.2	6,771	-16.67
Division 3	7,385	-4.52	7,637	-6.01
Division 4	8,741	13.02	9,881	21.6
Division 5	8,015	3.63	8,152	0.32
Division 6	8,145	5.31	8,168	0.52
Division 7	7,108	-8.1	7,651	-5.84
* Note: An anomaly was identified during the modelling process, with sixteen voters misallocated. This table has assigned these voters to Division 1 and the documentation on the ECQ website has been updated.				

PUBLIC SUGGESTIONS

The Change Commission sought public suggestions to assist in developing its proposal. Advertisements were placed in The Courier-Mail, the Rockhampton Morning Bulletin and on the ECQ's website and social media.

Suggestions were invited from 27 April to 5pm 13 May 2019. Five submissions were received and are available to view at Appendix B.

While noting a need for major internal boundary realignments, the Rockhampton Regional Council recommended minor changes until the completion of the referred external boundary review between the Rockhampton Regional and Livingstone Shire Councils. Six SA1 transfers were recommended and the Change Commission has implemented four of these in the West Rockhampton and Stanwell areas. However, to further balance enrolment the Change Commission has proposed some additional realignments in these areas. Minimal changes have been proposed to Divisions 1, 2, 3 and 7 with more significant changes made to the remaining Divisions 4, 5 and 6 to bring Division 4 into quota and manage its projected growth.

The Council's suggested changes in the Gracemere and Limestone Creek areas were considered but not implemented, noting the proposed boundaries have instead created a Gracemere based Division 4 and that the Limestone Creek area appears more connected by the road networks to Division 1 than Division 2.

One submitter stated that Mount Morgan should not be in the same division as Parkhurst. It should be noted that these localities are currently separated, with Mount Morgan in Division 5 and Parkhurst in Division 1. However, the Change Commission acknowledged the possibility that this request was more generally commenting on the large distances between Mount Morgan and other localities within Division 5. The proposed changes maintain the separation of Mount Morgan and Parkhurst and have transferred Mount Morgan and the surrounding localities into Division 6, where they have connectivity via the Burnett Highway. To accommodate this change, an additional portion of urban Rockhampton is proposed to move into Division 5.

The remaining submissions raised issues that were unable to be considered in this internal boundary review. Two related to the external boundary review and requested suburbs be transferred from the Livingstone Shire Council to the Rockhampton Regional Council. The other submitter appeared to be requesting a change to the electoral arrangements of Council to become undivided (no divisions). This was also outside the scope of this review.

THE PROPOSED BOUNDARIES

The proposed boundaries for the Rockhampton Regional Council are detailed below. They bring enrolment in each division into quota, whilst also catering for the significant growth projected in certain parts of the region. The Change Commission has made a concerted effort to unite suburbs within individual divisions and follow natural or geographic features such as roads and waterways where possible.

Table 3 shows the current and projected enrolment for the proposed electoral divisions. Maps of the proposed divisions are in Appendix C and interactive maps are on the ECQ website.

Table 3 – Summary of Enrolment for the Proposed Divisions				
Division	Enrolment as at 31/01/2019	(%) Deviation from Average Enrolment	Projected Enrolment as at 31/03/2024	(%) Deviation from Average Enrolment
Division 1	7,080	-8.46	7,811	-3.87
Division 2	7,666	-0.88	7,580	-6.72
Division 3	7,384	-4.53	7,636	-6.03
Division 4	7,517	-2.81	8,594	5.76
Division 5	8,438	9.1	8,459	4.1
Division 6	8,315	7.51	8,517	4.82
Division 7	7,740	0.07	8,283	1.94

Division 1

One change is proposed for Division 1, with a portion of Norman Gardens bounded by Moores Creek Road and German Street, being transferred into Division 2. In doing so, this has helped to increase enrolment in Division 2 and has brought this Division into quota.

The proposed Division has 7,080 voters which is -8.46% below average and is predicted to have 7,811 voters by 2024 which would be -3.87% below average.

Division 2

Division 2 is currently out of quota at -11.2% and needs to gain electors. It is proposed that a portion of Norman Gardens be added from Division 1 to address its enrolment deficit.

The proposed Division has 7,666 voters which is -0.88% below average and is predicted to have 7,580 voters by 2024 which would be -6.72% below average.

Division 3

Minimal change is proposed with a couple boundary reconfigurations suggested for Division 3. In the north-west, the boundary is proposed to follow Musgrave Street and High Street, thereby uniting the Stockland Rockhampton shopping complex within Division 7. At present this shopping centre is split between Divisions 3 and 7.

Two other minor changes are proposed so that the boundaries of this Division follow the Berserker locality. These changes do not impact electors.

The proposed Division has 7,384 voters which is -4.53% below average and is predicted to have 7,636 voters by 2024 which would be -6.03% below average.

Division 4

Division 4 is currently out of quota at 13.02% and is projected to be 21.6% above the average enrolment by 2024. To reduce voter numbers within this Division, the boundaries are proposed to contract to the Gracemere locality boundary.

The Change Commission proposes the following changes. The Division:

- a. Transfers Kabra and its portion of Stanwell to Division 5; and
- b. Transfers its portion of the Bouldercombe locality to Division 6.

The proposed Division has 7,517 voters which is -2.81% below average and is predicted to have 8,594 voters by 2024 which would be 5.76% above average.

Division 5

Both Divisions 5 and 6 have expanded towards Division 4 to help alleviate enrolment growth pressures in the area. In doing so, the Change Commission recognises that Division 5 is close to the upper limit of the quota. However, it is noted that enrolment in this Division is projected to move closer toward the average enrolment by 2024.

The Change Commission proposes the following changes. The Division:

- a. Gains the Kabra locality and the remainder of Stanwell from Division 4;
- b. Gains Fairy Bower and a portion of West Rockhampton, The Range and Allentown from Division 6;
- c. Transfers a portion of West Rockhampton and Wandal bounded by the Lion Creek, Lion Creek Road and the rail line to Division 7; and
- d. Transfers Moongan, Leydens Hill, Struck Oil, Limestone, Johnsons Hill, Baree, Walterhall, The Mine, Mount Morgan, Horse Creek, Hamilton Creek, Boulder Creek, Trotter Creek, Nine Mile Creek, Walmul, Oakey Creek, Wura, Fletcher Creek and its portion of the Bouldercombe locality to Division 6.

The proposed Division has 8,438 voters which is 9.1% above average and is predicted to have 8,459 voters by 2024 which would be 4.1% above average.

Division 6

Both Division 6 and neighbouring Division 5 have expanded towards Division 4 to help alleviate enrolment and growth pressures in the area. Division 6 has united the Mount Morgan and surrounding areas within this Division and in doing so, follows the direction of the Burnett Highway road network in this area.

The Change Commission proposes the following changes. The Division:

- a. Gains part of Bouldercombe from Division 4;
- b. Gains the remainder of Bouldercombe and the Moongan, Leydens Hill, Struck Oil, Limestone, Johnsons Hill, Baree, Walterhall, The Mine, Mount Morgan, Horse Creek, Hamilton Creek, Boulder Creek, Trotter Creek, Nine Mile Creek, Walmul, Oakey Creek, Wura and Fletcher Creek localities from Division 5; and
- c. Transfers Fairy Bower and a portion of West Rockhampton, The Range and Allenstown to Division 5.

The proposed Division has 8,315 voters which is 7.51% above average and is predicted to have 8,517 voters by 2024 which would be 4.82% above average.

Division 7

To increase enrolment within Division 7 and reduce some of the growth pressure on Divisions 4, 5 and 6, the proposed western boundary of Division 7 has expanded across the Fitzroy River to take in part of West Rockhampton and Wandal, bounded by the Lion Creek, Lion Creek Road and the rail line, from Division 5.

Another small change is suggested, uniting the Stockland Rockhampton shopping complex within Division 7 by following Musgrave Street and High Street.

The proposed Division has 7,740 voters which is 0.07% above average and is predicted to have 8,283 voters by 2024 which would be 1.94% above average.

COMMENTS ON THE PROPOSAL INVITED

Comments on this proposal are invited until 5pm, 30 September 2019 and can be lodged through:

Online Form

<https://ecq.qld.gov.au/lgr/rockhampton>

Email

LGCCsubmissions@ecq.qld.gov.au

Personal Delivery

Electoral Commission of Queensland
Level 20, 1 Eagle Street
BRISBANE QLD 4000

Post

Local Government Change Commission
GPO Box 1393
BRISBANE QLD 4001

It is recommended that those submitting comments:

- consider the enrolment requirements outlined in the Act and in this report;
- clearly state which division/s your comment relates to;
- provide supporting information for why you support or oppose a proposed boundary change or public submission; and
- if you oppose a change, provide alternative boundary suggestions and reasoning.

FINALISING THE REVIEW

After reviewing the public comments on the proposal, the Change Commission will make a final determination on the Council's divisional boundaries.

The results of a Change Commission review must be provided to the Minister for Local Government. A notice of results is published in a local newspaper, the Queensland Government Gazette and on the ECQ website.

A decision of the Change Commission is not subject to appeal.

IMPLEMENTATION

A local government change can only be implemented by the Governor in Council under a regulation.

The regulation may provide for anything that is necessary or convenient to facilitate the change.

APPENDIX A

Minister's Referral



Minister for Local Government,
Minister for Racing and
Minister for Multicultural Affairs

Our ref: MC19/803

26 MAR 2019

Mr Pat Vidgen PSM
Electoral Commissioner
Electoral Commission Queensland
GPO Box 1393
BRISBANE QLD 4001

1 William Street
Brisbane Queensland 4000
PO Box 15009
City East Queensland 4002
Telephone +61 7 3719 7560
Email lgrma@ministerial.qld.gov.au
Website www.dlgrma.qld.gov.au

ABN 65 959 415 158

Dear Pat

I am writing to you in relation to a Local Government electoral review that was undertaken by the Rockhampton Regional Council in preparation for the 2020 Local Government quadrennial elections.

I have received correspondence from Mr Evan Pardon, Chief Executive Officer of the Council dated 7 February 2019 advising that the review concluded that the number of electors in Divisions 2 and 4 of the Council is out of the quota of a reasonable proportion of electors as required by the *Local Government Act 2009* (the Act).

Section 18 of the Act provides that only I may apply to the Local Government Change Commission (Change Commission) for an assessment of a proposed Local Government change. Further, under section 19 of the Act, the Change Commission must consider whether the Local Government change is consistent with the Act and must consider my views on any proposed changes.

Having examined the Council's submission, I consider it appropriate to refer the matter to you for independent assessment and determination by the Change Commission. I recommend that in assessing the out of quota divisions, the Change Commission also considers the potential impacts of the proposed Local Government boundary change that I referred to it for assessment on 31 January 2019, thereby seeking to minimise the impact of possible successive divisional boundary changes on residents.

I have asked for Mr Daniel Westall, Manager, Governance, Local Government Division in the Department of Local Government, Racing and Multicultural Affairs to assist you with any further queries. You may wish to contact Mr Westall on [REDACTED] or by email at [REDACTED].

Yours sincerely

STIRLING HINCHLIFFE MP
Minister for Local Government,
Minister for Racing and
Minister for Multicultural Affairs

APPENDIX B

Suggestions Notice & Public Submissions

LOCAL GOVERNMENT CHANGE COMMISSION

Divisional Boundary Review of Rockhampton Regional Council

The Rockhampton Regional Council has advised its electoral divisions no longer meet the voter enrolment requirements set down in the *Local Government Act 2009*. As a result, the Minister for Local Government has referred the matter to the Change Commission for independent assessment.

Enrolment Requirements

Each division of the Council is required to have relatively the same number of voters (quota) to ensure each person's vote has the same value. The quota for each division of the Rockhampton Regional local government area is 7,734* with a lower limit of 6,961* (-10%) and an upper limit of 8,507* (+10%).

For more information and enrolment statistics please see the Electoral Commission of Queensland's website: www.ecq.qld.gov.au/electoral-boundaries/lg-reviews/DBRs or phone 1300 881 665.

INVITATION FOR WRITTEN SUGGESTIONS

The Change Commission now invites suggestions regarding the divisional boundaries for the Rockhampton Regional Council. Submissions will be accepted until 5pm on 13 May 2019. Late submissions cannot be considered.

Submissions can be lodged through:

- Online Form (*preferred*)

www.ecq.qld.gov.au/electoral-boundaries/lg-reviews/DBRs

- Email

LGCCsubmissions@ecq.qld.gov.au

- Personal Delivery (Mon - Fri 9.00am - 5.00pm)

Electoral Commission of Queensland
Level 20, 1 Eagle Street
BRISBANE QLD 4000

- Post

Local Government Change Commission
GPO Box 1393
BRISBANE QLD 4001

Submissions will be made available for public inspection. To discuss any privacy concerns, please phone 1300 881 665.

Pat Vidgen PSM

Electoral Commissioner

** Please note: The enrolment figures in this notice have been amended after spatial modelling, resulting in a slight modification to the average, upper and lower limits of the quota.*

Divisional Boundary Review of Rockhampton Regional Council

List of Public Suggestions

Suggestion	Name / Organisation
1	Michelle
2	Melanie Dansie
3	Tony Cullen
4	Steve Ensby
5	Rockhampton Regional Council

Sent: Monday, 29 April 2019 10:07 AM
To: LG CC Submissions
Subject: (78645) Rockhampton Regional Local Government Area - Michelle

Online submission for **Rockhampton Regional Local Government Area** from **Michelle**

Submission Details

Name: Michelle

Submission Text: I live on [REDACTED] Rockyview and believe our estate should be part of the Rockhampton Regional Council because we are closer to Rockhampton than Yeppoon and use it's amenities, parks, shops, businesses and restaurants. It makes no sense for our estate to be park of Livingstone as I barely travel down there. Have never once been to their library, parks, or dump. We get no perks or consideration during planning or infrastructure improvements.

File Upload: No file uploaded ()

Sent: Monday, 29 April 2019 12:44 PM
To: LG CC Submissions
Subject: (78648) Rockhampton Regional Local Government Area - Melanie Dansie

Online submission for **Rockhampton Regional Local Government Area** from **Melanie Dansie**

Submission Details

Name: Melanie Dansie

Submission Text: Nil boundaries

File Upload: No file uploaded ()

Sent: Monday, 29 April 2019 6:19 PM
To: LG CC Submissions
Subject: (78653) Rockhampton Regional Local Government Area - Tony cullen

Online submission for **Rockhampton Regional Local Government Area** from **Tony cullen**

Submission Details

Name: Tony cullen

Submission Text: Makes sense that we have changed boundaries as Rockhampton is the city of the region and residents from Glenlee and Caves want to be part of Rockhampton

File Upload: No file uploaded ()

Sent: Monday, 6 May 2019 7:08 AM
To: LG CC Submissions
Subject: (78690) Rockhampton Regional Local Government Area - Steve Ensby

Online submission for **Rockhampton Regional Local Government Area** from **Steve Ensby**

Submission Details

Name: Steve Ensby

Submission Text: Mt Morgan should not be lumped with Parkhurst. Its crazy our rep is so far away!

File Upload: No file uploaded ()

09 May 2019

Mr Pat Vidgen PSM
Local Government Change Commission
Electoral Commission Queensland
GPO Box 1393
BRISBANE QLD 4001

Dear Mr Vidgen

Re: Internal Boundary Review

I write with reference to the above matter. It is important to note that Councillors from Rockhampton Regional Council have delegated this review to myself so as to maintain an arm's length position from any perception their submission could influence yourself to their benefit.

That being said Council also resolved that my submission should be based on the premise that while there is a need for some major realignment of the internal boundaries this should wait until the completion of the external boundary review. Subsequently my submission should be based on minimum disruption for the electorate until such time the external review is complete.

On this basis and acknowledging that there will still be some disparity between divisions potentially until the 2024 local government elections I recommend the following:

- SA1 3122004 transfer from division 4 to division 5
- SA1 3121018 transfer from division 4 to division 6
- SA1 3121611 transfer from division 6 to division 5
- SA1 3121605 transfer from division 6 to division 5
- SA1 3121606 transfer from division 6 to division 5
- SA1 3121308 transfer from division 1 to division 2

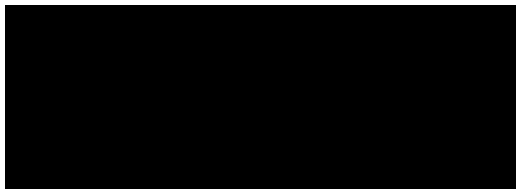
I would like to thank you for the opportunity to contribute to this review. Should you wish to discuss this submission please contact Deputy CEO, Ross Cheesman.

Pursuant to Part 2 of the Local Government Act 2009, Council has reviewed each of its electoral divisions to assess the reasonable proportion of electors in each division. This review has concluded that divisions 2 and 4 are both out of quota.

Whilst not a requirement of this review, Council resolved that it will retain divisional boundaries.

Should you require any further information please feel free to contact Deputy CEO, Ross Cheesman on [REDACTED].

Yours sincerely

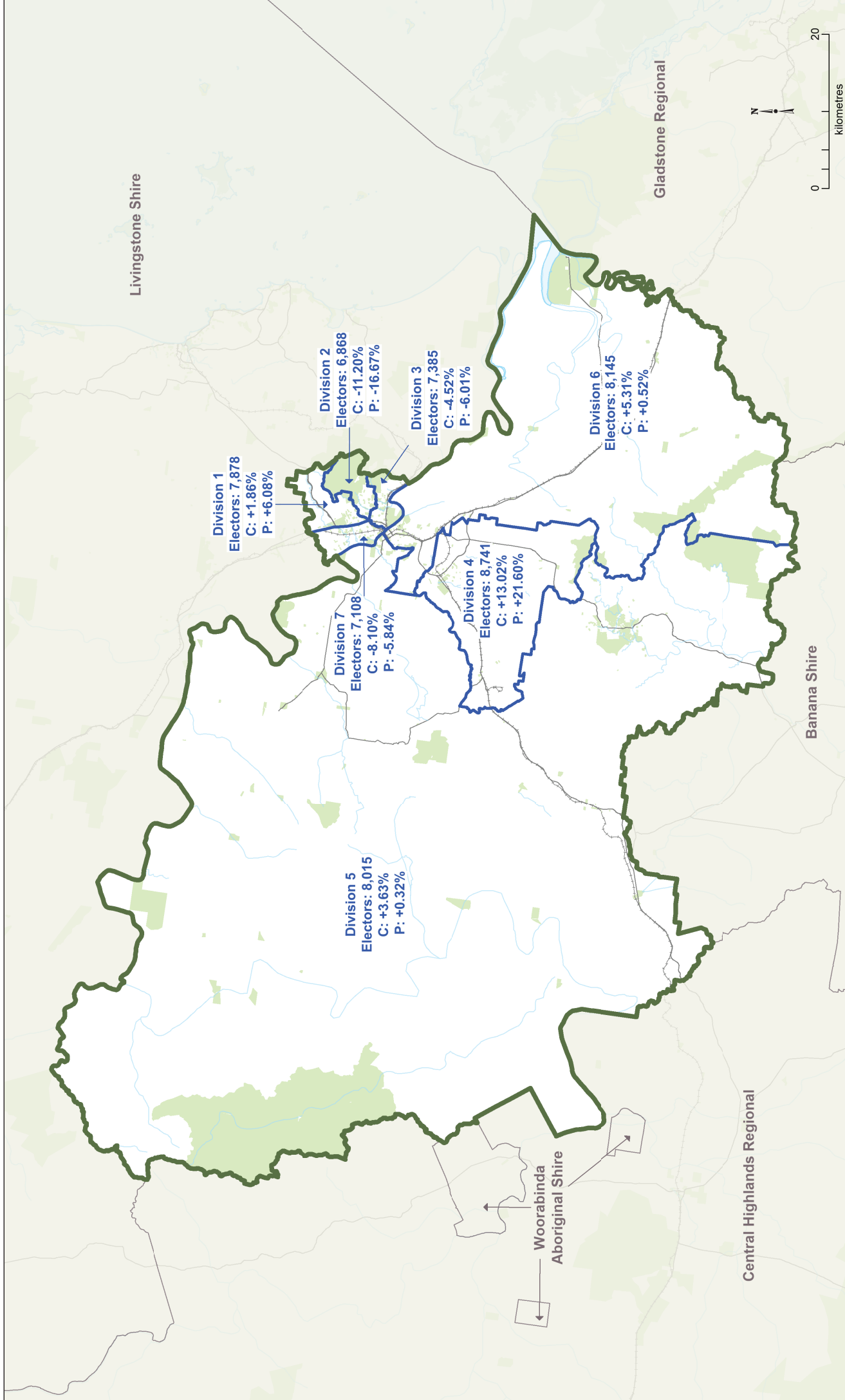
A large black rectangular redaction box covering the signature of Evan Pardon.

Evan Pardon
Chief Executive Officer
Rockhampton Region Council

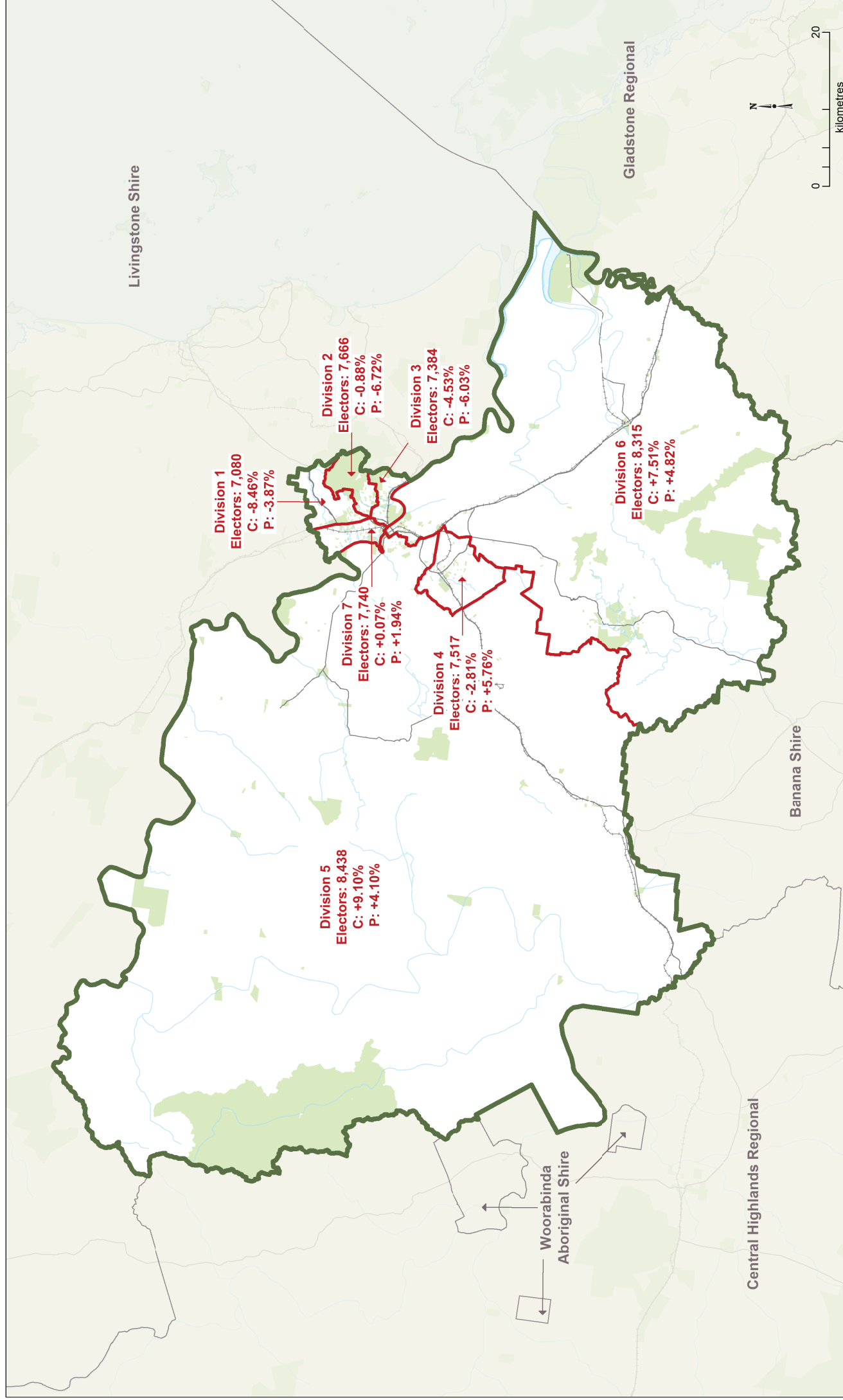
APPENDIX C

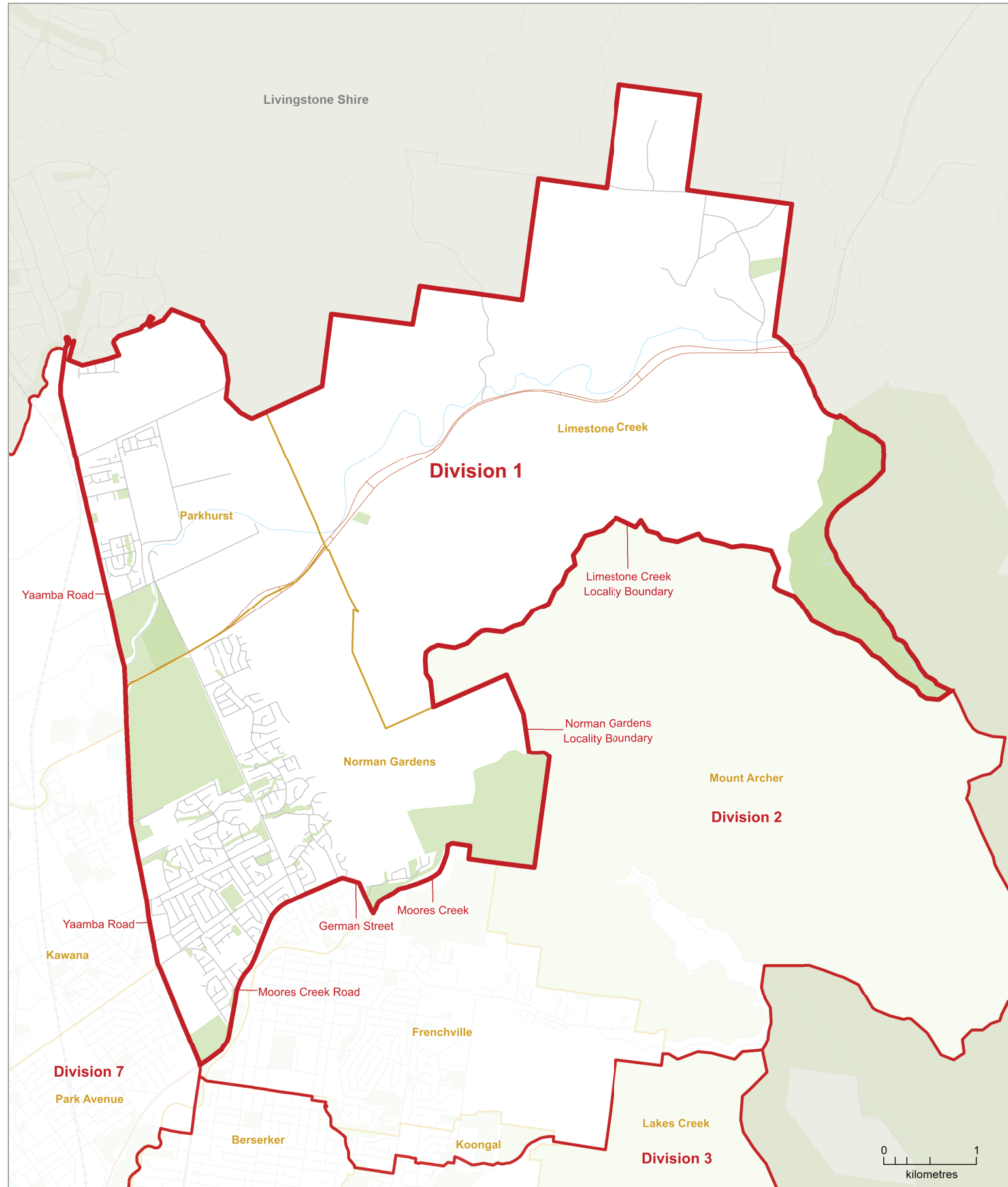
Maps of Proposed Divisions

ROCKHAMPTON REGIONAL Existing Electoral Divisions



ROCKHAMPTON REGIONAL Proposed Electoral Divisions





2019
Local Government Area
Divisional Boundary Review
PROPOSED DIVISIONAL BOUNDARIES
ROCKHAMPTON REGIONAL
Division 1



LEGEND

	Proposed Division Boundary		Reserve, Parkland
	Proposed Adjacent Division		Waterbody
	Locality Boundary		Railway
	Adjacent Council		Main Road
			Wetland

This product was created using datasets from various authoritative sources, and is intended as a guide only to display proposed divisional boundaries.

The digital GIS data is available FREE to download from Queensland Spatial Catalogue, or Qspatial, at <http://qldspatial.information.qld.gov.au>

© The State of Queensland - 2019 (Department of Natural Resources, Mines and Energy)
 © Electoral Commission of Queensland 2019 Creative Commons (CC BY)

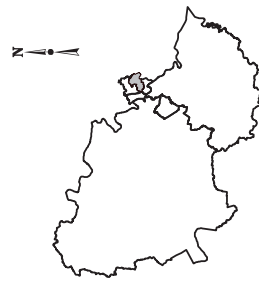
**PROPOSED DIVISIONAL
BOUNDARIES**

**ROCKHAMPTON REGIONAL
Division 2**

LEGEND

- Proposed Division Boundary
- Proposed Adjacent Division
- Locality Boundary
- Adjacent Council
- Reserve, Parkland
- Waterbody
- Railway
- Main Road
- Welland

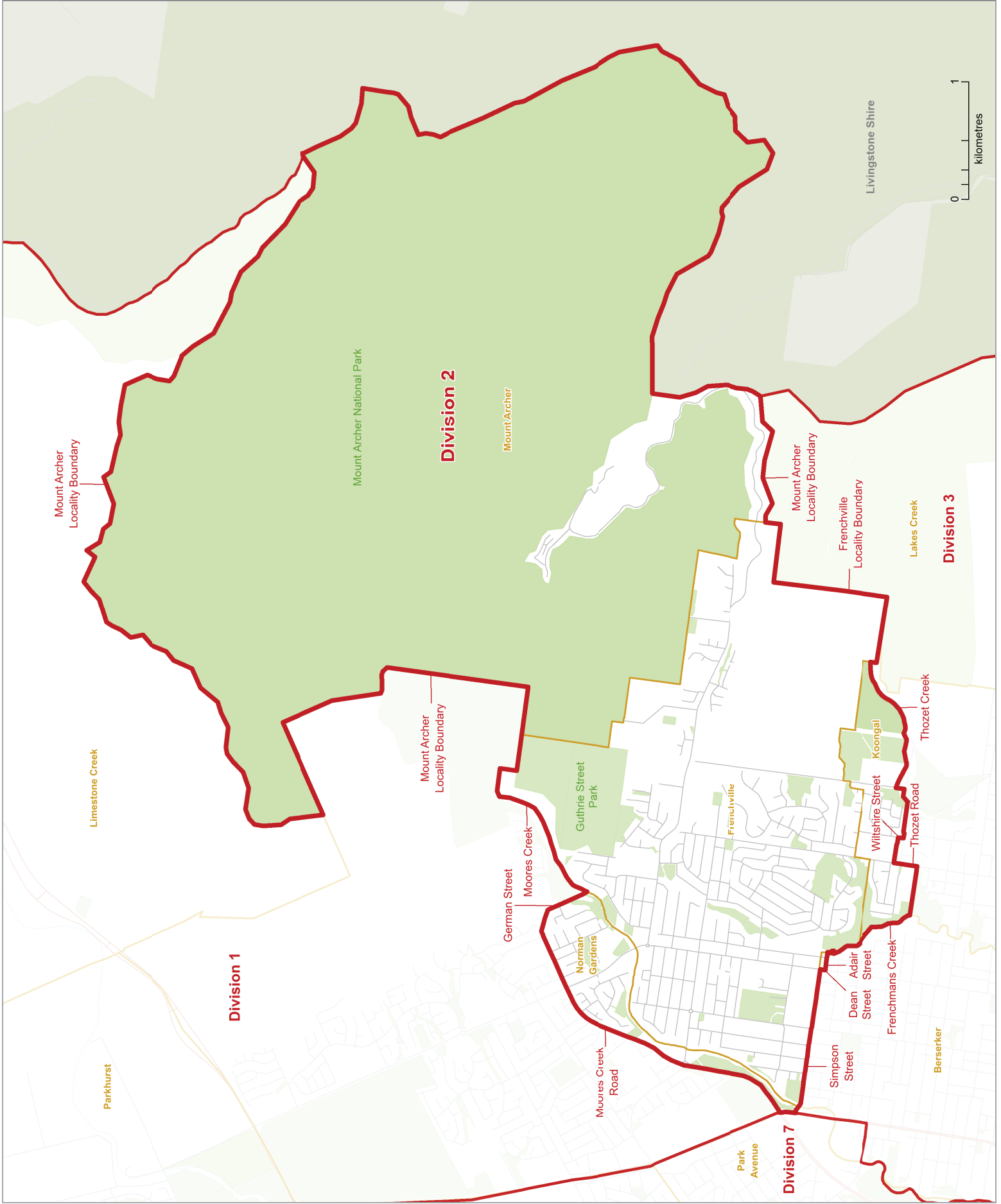
Location Map
DIVISION 2



This product was created using datasets from various authoritative sources, and is intended as a guide only to display proposed divisional boundaries.

The digital GIS data is available FREE to download from Queensland Spatial Catalogue or Qspatial, at <http://qdsportal.information.qld.gov.au>

© The State of Queensland - 2019 (Department of Natural Resources, Mines and Energy)
© Electoral Commission of Queensland 2019
Creative Commons (CC BY)









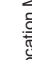


0 1
kilometres

**PROPOSED DIVISIONAL
BOUNDARIES**

**ROCKHAMPTON REGIONAL
Division 3**

LEGEND

-  Proposed Division Boundary
-  Proposed Adjacent Division
-  Locality Boundary
-  Adjacent Council
-  Reserve, Parkland
-  Waterbody
-  Railway
-  Main Road
-  Welland

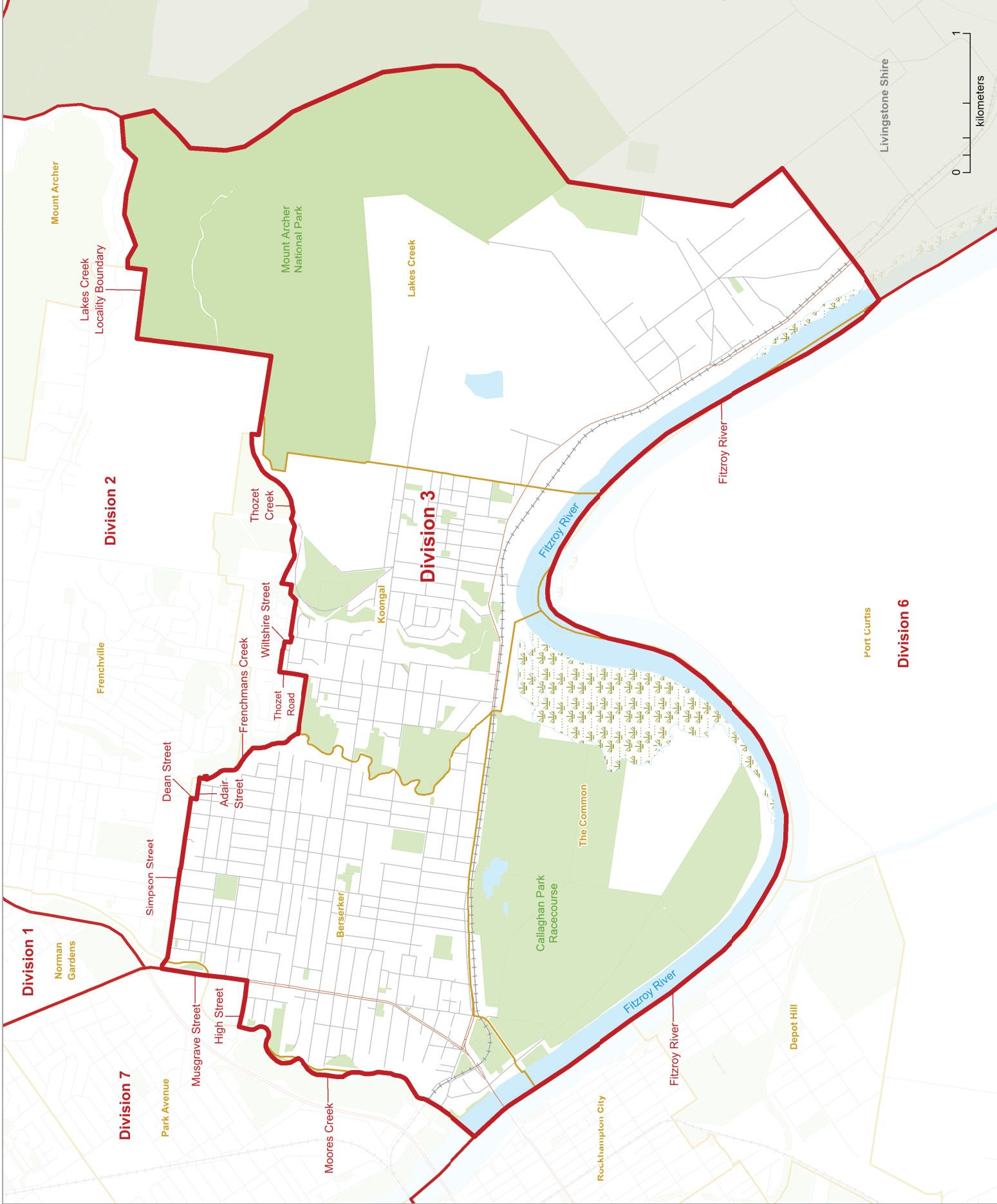
Location Map
DIVISION 3



This product was created using datasets from various authoritative sources, and is intended as a guide only to display proposed divisional boundaries.

The digital GIS data is available FREE to download from Queensland Spatial Catalogue or Qspatial, at <http://qdsportal.information.qld.gov.au>

© The State of Queensland - 2019 (Department of Natural Resources, Mines and Energy)
© Electoral Commission of Queensland 2019
Creative Commons (CC BY)



**PROPOSED DIVISIONAL
BOUNDARIES**

ROCKHAMPTON REGIONAL
Division 4

LEGEND

- Proposed Division Boundary
- Proposed Adjacent Division
- Locality Boundary
- Adjacent Council
- Reserve, Parkland
- Waterbody
- Railway
- Main Road
- Welland

Location Map
DIVISION 4



This product was created using datasets from various authoritative sources, and is intended as a guide only to display proposed divisional boundaries.

The digital GIS data is available FREE to download from Queensland Spatial Catalogue or Qspatial, at <http://qdsportal.information.qld.gov.au>

© The State of Queensland - 2019 (Department of Natural Resources, Mines and Energy)
© Electoral Commission of Queensland 2019
Creative Commons (CC BY)

Division 5

Nine Mile

Scrubby Creek

Gracemere
Locality Boundary

Scrubby Creek

Bruce Highway

Division 4

Gracemere

Gracemere
Locality Boundary

Burnett Highway

Gavial Gracemere
Road

Gracemere
Locality Boundary

Gracemere
Locality Boundary

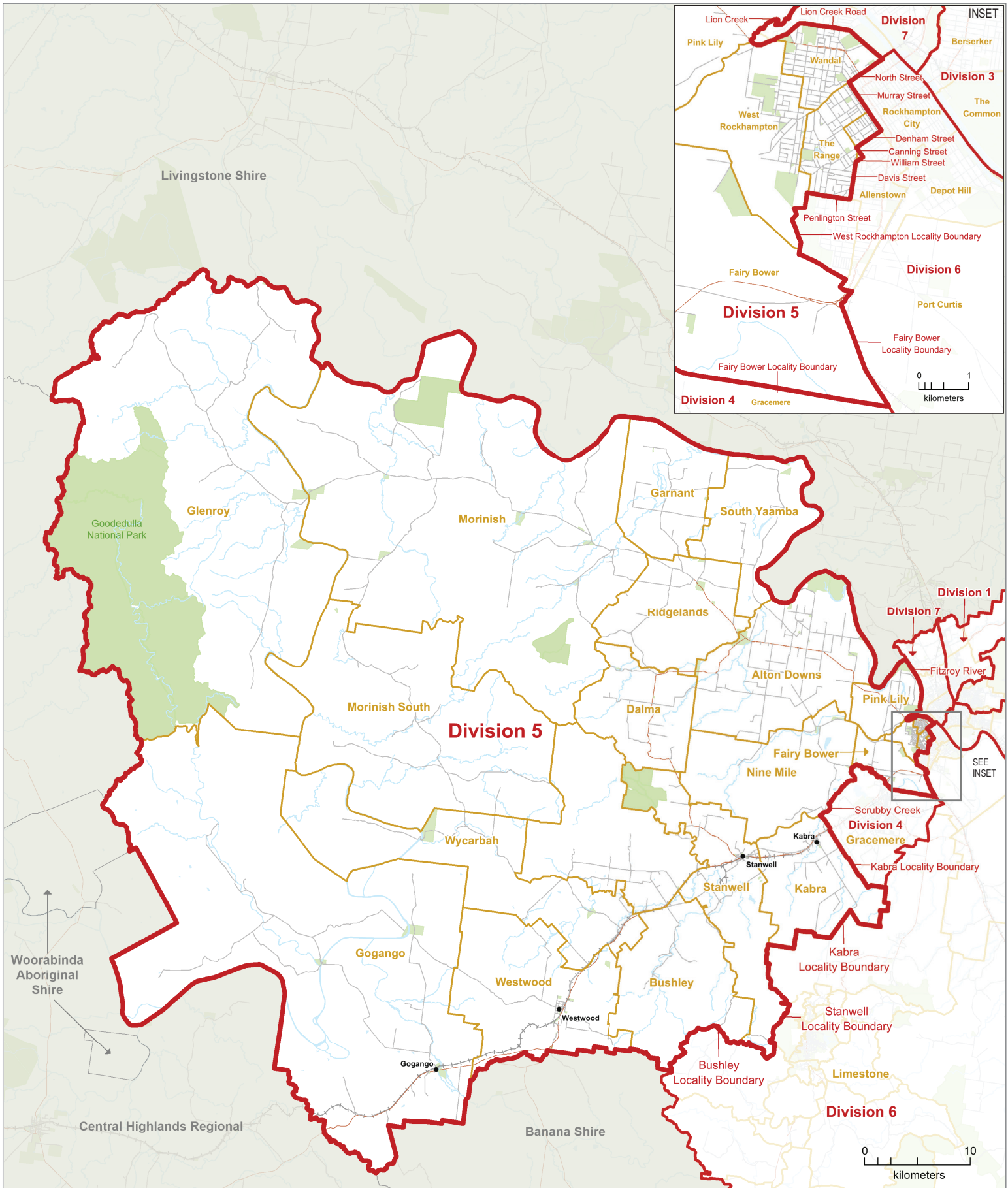
Kabra

Bouldercombe

Division 6

Gracemere
Locality Boundary

0 2
kilometres



2019
Local Government Area
Divisional Boundary Review

PROPOSED DIVISIONAL BOUNDARIES
ROCKHAMPTON REGIONAL
Division 5



LEGEND

	Proposed Division Boundary		Reserve, Parkland
	Proposed Adjacent Division		Waterbody
	Locality Boundary		Railway
	Adjacent Council		Main Road
			Wetland

This product was created using datasets from various authoritative sources, and is intended as a guide only to display proposed divisional boundaries.

The digital GIS data is available FREE to download from Queensland Spatial Catalogue, or Qspatial, at <http://qldspatial.information.qld.gov.au>

© The State of Queensland - 2019 (Department of Natural Resources, Mines and Energy)
 © Electoral Commission of Queensland 2019 Creative Commons (CC BY)

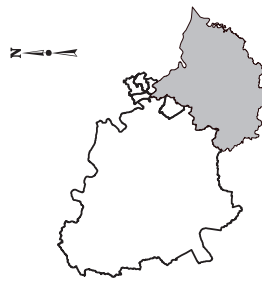
**PROPOSED DIVISIONAL
BOUNDARIES**

ROCKHAMPTON REGIONAL
Division 6

LEGEND

- Proposed Division Boundary
- Proposed Adjacent Division
- Locality Boundary
- Adjacent Council
- Reserve, Parkland
- Waterbody
- Railway
- Main Road
- Welland

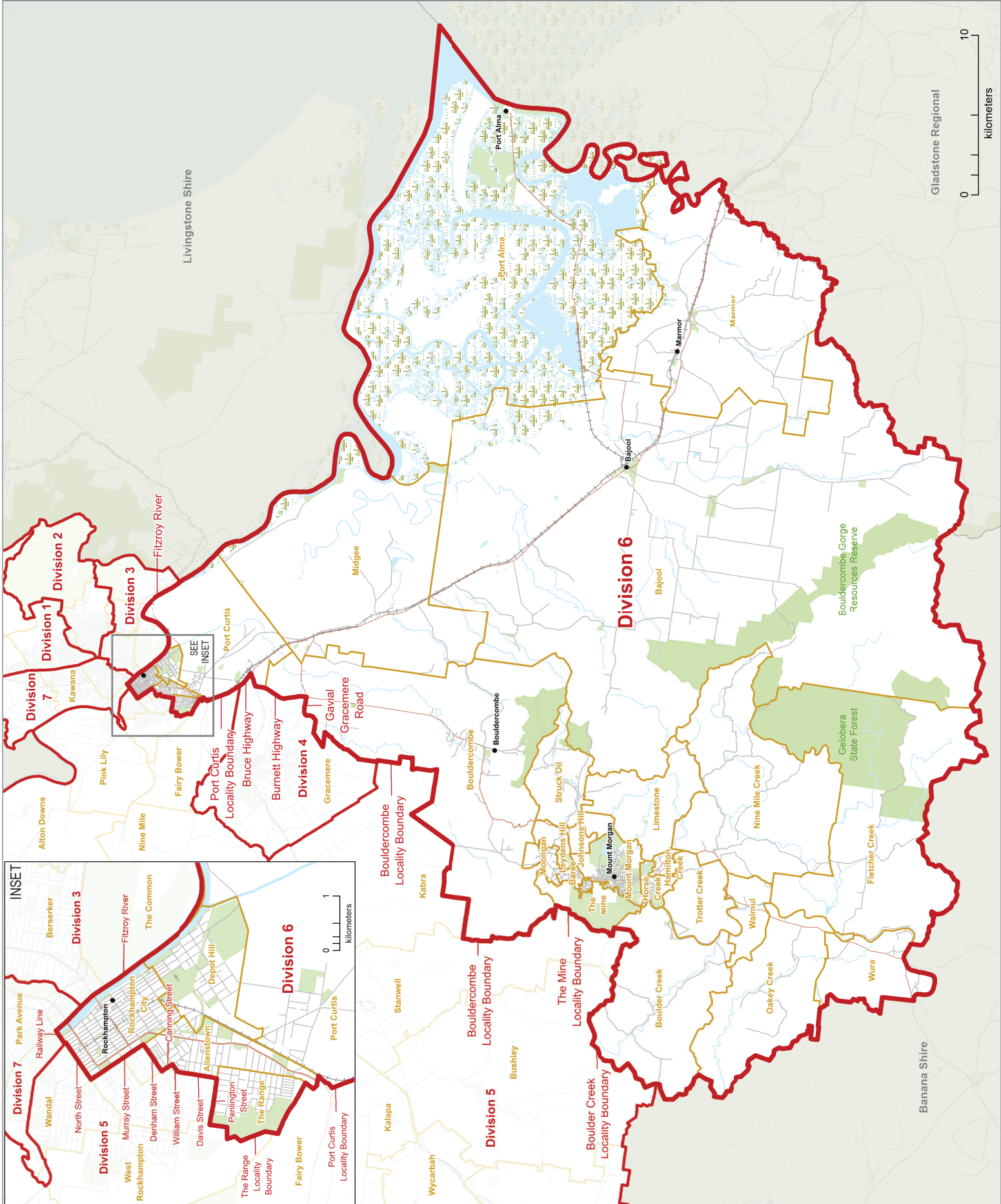
Location Map
DIVISION 6

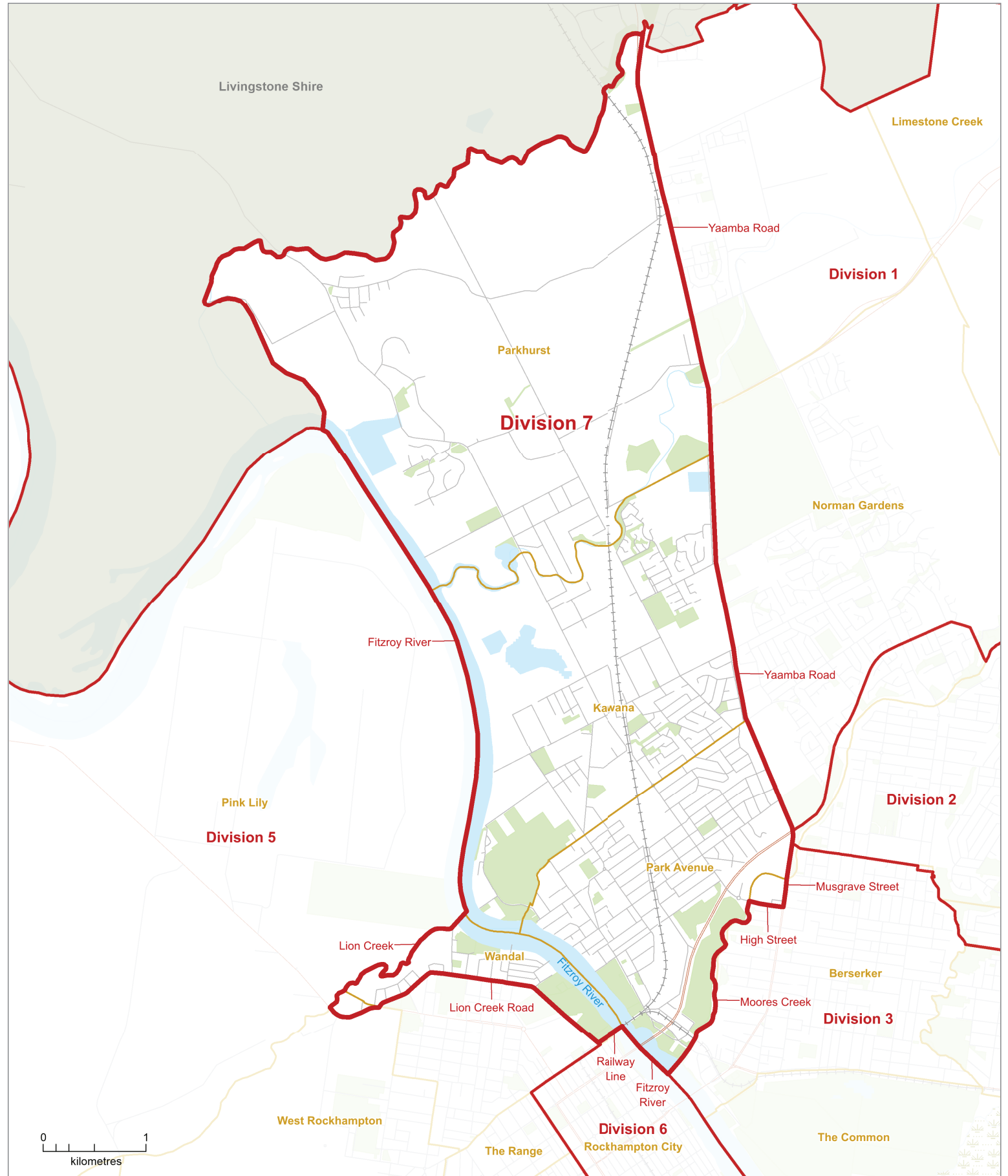


This product was created using datasets from various authoritative sources, and is intended as a guide only to display proposed divisional boundaries.

The digital GIS data is available FREE to download from Queensland Spatial Catalogue or Qspatial, at <http://qds.spatialinformation.qld.gov.au>

© The State of Queensland - 2019 (Department of Natural Resources, Mines and Energy)
© Electoral Commission of Queensland 2019
Creative Commons (CC BY)





2019
Local Government Area
Divisional Boundary Review

PROPOSED DIVISIONAL BOUNDARIES

ROCKHAMPTON REGIONAL
Division 7



LEGEND

	Proposed Division Boundary		Reserve, Parkland
	Proposed Adjacent Division		Waterbody
	Locality Boundary		Railway
	Adjacent Council		Main Road
			Wetland

This product was created using datasets from various authoritative sources, and is intended as a guide only to display proposed divisional boundaries.

The digital GIS data is available FREE to download from Queensland Spatial Catalogue, or Qspatial, at <http://qldspatial.information.qld.gov.au>

© The State of Queensland - 2019 (Department of Natural Resources, Mines and Energy)
 © Electoral Commission of Queensland 2019 Creative Commons (CC BY)

LOCAL GOVERNMENT CHANGE COMMISSION

W: www.ecq.qld.gov.au

E: LGCCsubmissions@ecq.qld.gov.au

T: 1300 881 665

P: Local Government Change Commission
GPO Box 1393
BRISBANE QLD 4001



**Electoral
Commission**
QUEENSLAND