



LOCAL GOVERNMENT CHANGE COMMISSION

2015 REDIVISION OF ELECTORAL DIVISIONS WITHIN TABLELANDS REGIONAL COUNCIL

FINAL DETERMINATION

SEPTEMBER 2015



LOCAL GOVERNMENT CHANGE COMMISSION

2015 REDIVISION OF ELECTORAL DIVISIONS WITHIN TABLELANDS REGIONAL COUNCIL

FINAL DETERMINATION

SEPTEMBER 2015

Electoral Commission of Queensland
Level 6, 160 Mary Street, Brisbane QLD 4000
GPO Box 1393, Brisbane QLD 4001

Telephone: 1300 881 665
Facsimile: (07) 3036 5776
Website: www.ecq.qld.gov.au

TABLE OF CONTENTS

FOREWORD	3
CHAPTER 1 – INTRODUCTION	4
TERMS OF REFERENCE	4
LEGISLATIVE PROVISIONS	4
DETERMINING THE QUOTA.....	5
<i>Technical Process</i>	5
Table 1 – Enrolment, Projections and Averages.....	5
CHAPTER 2 – THE REVIEW PROCESS	6
CHAPTER 3 – FINAL DETERMINATION.....	7
CURRENT ENROLMENT.....	7
Table 2 – Enrolment for the Current Electoral Divisions	7
PROPOSED DETERMINATION.....	7
OBJECTION TO THE PROPOSED DETERMINATION.....	8
FINAL DETERMINATION.....	8
Table 3 – Summary of Enrolments for the Final Electoral Divisions	8
APPENDIX A Previous Electoral Divisions	
APPENDIX B Minister's Referral and Council's Submission	
APPENDIX C Change Commission's Proposed Determination	
APPENDIX D Invitation for Objections to the Proposal	
Comments to the Proposed Determination	
APPENDIX E Maps of Council's Electoral Divisions for 2016 Elections	

FOREWORD

This report outlines the Final Determination for the redivision of electoral divisions within Tablelands Regional Council.

The *Local Government Act 2009 (Qld)* (the Act) provides for a Local Government Change Commission (the Change Commission) to conduct the assessment phase of the boundary change process. The Act also provides for the Change Commission to be the appointed independent assessment body for boundary changes within Tablelands Regional Council.

The Change Commission is made up of the Electoral Commissioner or a combination of the Electoral Commissioner, the Deputy Electoral Commissioner and a casual Commissioner. The Change Commission for this review is made up of:

- Mr Walter van der Merwe, Electoral Commissioner; and
- Mr Gregory Rowe, casual Commissioner (appointed on 13 November 2015 for three years by the Governor in Council).

On 2 April 2015 a reference was made to the Change Commission by the Minister responsible for Local Government (see Appendix B).

For electoral purposes Tablelands Regional Council is now divided into six electoral divisions following a review of electoral arrangements by the Change Commission in June 2015. This report outlines the Change Commission's Final Determination for the boundaries of the divisions. It also sets out the reasons for the Change Commission's determination. The Change Commission's proposals were adopted unanimously at a meeting held on Friday 11 August 2015, both Commissioners were present.

Chapter 1 of this report provides an introduction to the Change Commission's requirements for undertaking an assessment of the internal boundaries. Chapter 2 presents a summary of the review process that was undertaken. A more detailed outline of the Final Determination appears in Chapter 3. Maps of the final boundary changes are in Appendix E.

In accordance with the Act the Change Commission may conduct the review in any way that it considers appropriate. To this end, the Change Commission provided data on the current boundaries and enrolment statistics as sourced from the Australian Electoral Commission (AEC) as at 23 February 2015. The Change Commission then called for objections to its Proposed Determination Report. Two objections were received.

The Tablelands Regional Council provided a written submission and maps prior to the call for objections (see Appendix B). The Change Commission is appreciative of the Council for its submission and correspondence throughout this process.

The Commissioners would also like to acknowledge the valuable assistance and expertise provided by the executive, mapping and support staff of the Electoral Commission Queensland including Dermot Tiernan, Zonka Petrusevska, Kurt Bonair, Moira McNeil, Yan Liu, Lesley Trost and Elise Arklay, and extend their thanks to the Queensland Treasury for the population projection figures.

Walter van der Merwe and Gregory Rowe

Change Commission

CHAPTER 1 – INTRODUCTION

TERMS OF REFERENCE

On 2 April 2015 the Change Commission received a reference to review the electoral arrangements of the Tablelands Regional Council from the Honourable Jackie Trad MP, Minister responsible for Local Government (see Appendix B).

LEGISLATIVE PROVISIONS

The Tablelands Regional Council has 16,399 electors (as at 23 February 2015). In finalising the review of the Council's electoral arrangements, the Change Commission determined that the Tablelands Regional Council is to be divided into six electoral divisions. Each division elects one Councillor while the Mayor is elected by all voters in the local government area. Elections are set by date to be held every four years as prescribed by the *Local Government Electoral Act 2011*. The next Tablelands Regional Council election is scheduled for 19 March 2016.

The *Local Government Act 2009 (Qld)* (the Act) allows for changes to divisions in local government areas to ensure that each division has a reasonable proportion of electors. Pursuant to Section 22 of the Act, the Change Commission for this review was constituted by the Electoral Commissioner and the casual Commissioner.

Section 15 of the Act requires the Tablelands Regional Council to review whether each of the divisions has a reasonable proportion of electors and give the Electoral Commissioner and the Minister a written notice of the results of the review no later than 1 March in the year that is one year before the year of the quadrennial elections. The date referred to in this report is known as the information date. The Council reported that three divisions (Divisions 4, 5 and 6) did not meet the reasonable proportion of elector's requirements on 24 February 2015.

Under the provisions of the Section 19 of the Act, in reviewing the division of a local government area the Change Commission is required to consider:

- 1) The Change Commission is responsible for assessing whether a proposed local government change is in the public interest;
- 2) In doing so, the Change Commission must consider:
 - a. whether the proposed local government change is consistent with a Local Government Act; and
 - b. the views of the Minister about the proposed local government change; and
 - c. any other matters prescribed under a regulation.

The Change Commission is required to release the outcomes of its assessment to the public and the reasoning behind the results, by publishing its findings in a newspaper circulating generally in the local government area, in the Government Gazette and on the Electoral Commission's website. The Change Commission must also give the results of its assessment to the Minister for Local Government for implementation. The method of implementation is by way of regulation by the Governor in Council.

A decision of the Change Commission is not subject to appeal.

DETERMINING THE QUOTA

The Act specifies binding quota requirements. A quota is determined by dividing the total number of electors in the local government area by the number of councillors (other than the mayor), plus or minus:

- for a council with more than 10,000 electors – 10%; or
- for any other council – 20%.

Section 15 of the Act allows for a margin of 10 per cent for Tablelands Regional Council to be adopted in relation to determining a reasonable proportion of electors. For ease of understanding the proportion of electors and the margin will be referred to in this document as “quota”.

The Change Commission, when formulating its proposals must ensure that each division complies with the quota as near as practicable to the election date. There is no latitude allowed for the Change Commission to determine electoral boundaries that do not comply with these requirements.

Technical Process

Key to the redivision is elector count information sourced from the electoral roll organised around the smallest unit for the release of Census data known as a Statistical Area (SA1) utilised by the Australian Bureau of Statistics.

The AEC, which maintains the electoral roll for Queensland pursuant to a joint roll agreement, provided statistics from the roll on numbers of electors in each SA1 in the area of the Tablelands Regional Council on 23 February 2015. Projections of population movement were then applied to the SA1s using data provided by Queensland Treasury. Future dates for projections were set at 31 March 2016 (just after the next quadrennial election) and 28 February 2019 (the last opportunity before the information date preceding the March 2020 election).

Table 1 – Enrolment, Projections and Averages

	23 February 2015	31 March 2016	28 February 2019
Number of divisions	6	6	6
Enrolment	16,399	16,613	17,277
Average electors per division	2,733	2,769	2,880
Permitted Maximum Number (+10%) per division	3,006	3,046	3,167
Permitted Minimum Number (-10%) per division	2,460	2,492	2,592

CHAPTER 2 – THE REVIEW PROCESS

In June 2015 the Change Commission determined that the Council would be divided into six single-member divisions, instead of the current five. By letter dated 24 February 2015, the Council advised the Minister that three divisions (Divisions 4, 5 and 6) were out of tolerance.

Based on the Council being newly divided into six divisions and utilising the 23 February 2015 enrolment data, the Change Commission calculated a quota (average enrolment) of 2,733, with a minimum of 2,460 (-10%) and an upper limit of 3,006 (+10%) electors permissible in each district.

After the completion of the electoral arrangements review on the 22 June 2015, the Tablelands Regional Council forwarded a proposal and maps to the Change Commission that involved changes to all six divisions. Relevant correspondence is attached at Appendix B.

On the 18 July 2015 advertisements were placed calling for objections to the Change Commission's Proposed Determination (see Appendix D). Objections closed on the 7 August 2015. Two objections were received.

In reaching its Final Determination the Change Commission took into account the public objections to the Proposed Determination, as well as the projected future changes in electoral numbers provided by Queensland Treasury.

Wherever possible, the Change Commission endeavours to devise boundaries that not only meet current quota requirements but are sustainable for at least two quadrennial elections and are in the public interest. The nature and extent of population growth or decline may render this impossible in some cases and the Change Commission recognises the possibility that boundaries may need to be reviewed again in readiness for the 2020 quadrennial elections.

CHAPTER 3 – FINAL DETERMINATION

CURRENT ENROLMENT

The Tablelands Regional Council has a total of 16,399 enrolled electors spread across six divisions, with an average number of 2,733 electors per division. Applying the plus or minus tolerance of 10 per cent allowed by the Act, the minimum number of electors required for each division is 2,460, with a maximum of 3,006.

As can be observed in Table 2, Divisions 4, 5 and 6 are currently out of quota. Division 5 has exceeded the maximum allowable number of electors, while Divisions 4 and 6 have fallen below the quota tolerance. To address this imbalance, both the Council and the Change Commission needed to alter the divisional boundaries to balance elector numbers across all six divisions. As part of its decision making process, the Change Commission has attempted to cater for future demographic trends, to keep all of the divisions within the Tablelands Regional Council in quota in the lead up to the 2020 quadrennial election.

Table 2 – Enrolment for the Current Electoral Divisions

Division Name	Enrolment as at 23/02/2015	(%) Deviation from Quota	Projected Enrolment as at 31/03/2016	(%) Deviation from Quota	Projected Enrolment as at 28/02/2019	(%) Deviation from Quota
Division 1	Division 1 was created under the electoral arrangements review					
Division 2	3,417	+4.18	3,462	+4.19	3,564	+3.13
Division 3	3,542	+7.99	3,592	+8.1	3,749	+8.48
Division 4	2,861	-12.77	2,891	-13	2,969	-14.09
Division 5	3,811	+16.2	3,840	+15.57	3,970	+14.91
Division 6	2,768	-15.6	2,828	-14.86	3,025	-12.44

PROPOSED DETERMINATION

As a result of the electoral arrangement review, the Change Commission determined it was appropriate to increase the number of divisions within the Tablelands Regional Council from five to six divisions. The Change Commission formulated its Proposed Determination based on its own modelling and a proposal put forward by the Tablelands Regional Council (see Appendix C).

OBJECTION TO THE PROPOSED DETERMINATION

Two objections were received during the consultation period. Neither suggestion discussed the proposed divisional boundaries, instead focusing on issues outside the purview of this review. One submitter expressed his opposition to the consultation process used for boundary reviews, while the other objected to the creation of a sixth division for the Council by suggesting four divisions (see Appendix D).

FINAL DETERMINATION

The Change Commission was satisfied that its proposal was well-reasoned and satisfied the need to bring the divisions of the Tablelands Regional Council into quota, while maintaining communities of interest.

The Change Commission recommends that its Proposed Determination is to be the new divisional boundaries. Projected growth figures suggest these changes are likely to keep all divisions within quota and are expected to prevent the need for future boundary changes prior to the 2020 local government elections.

The Change Commission's final recommendation to the Governor in Council is as follows:

- ***That for the purposes of the 2016 local government elections, the Tablelands Regional Council be divided into six divisions as shown on the maps contained in Appendix F of this report.***

The Change Commission notes that implementation of this recommendation will give rise to the following divisional elector numbers:

Table 3 – Summary of Enrolments for the Final Electoral Divisions

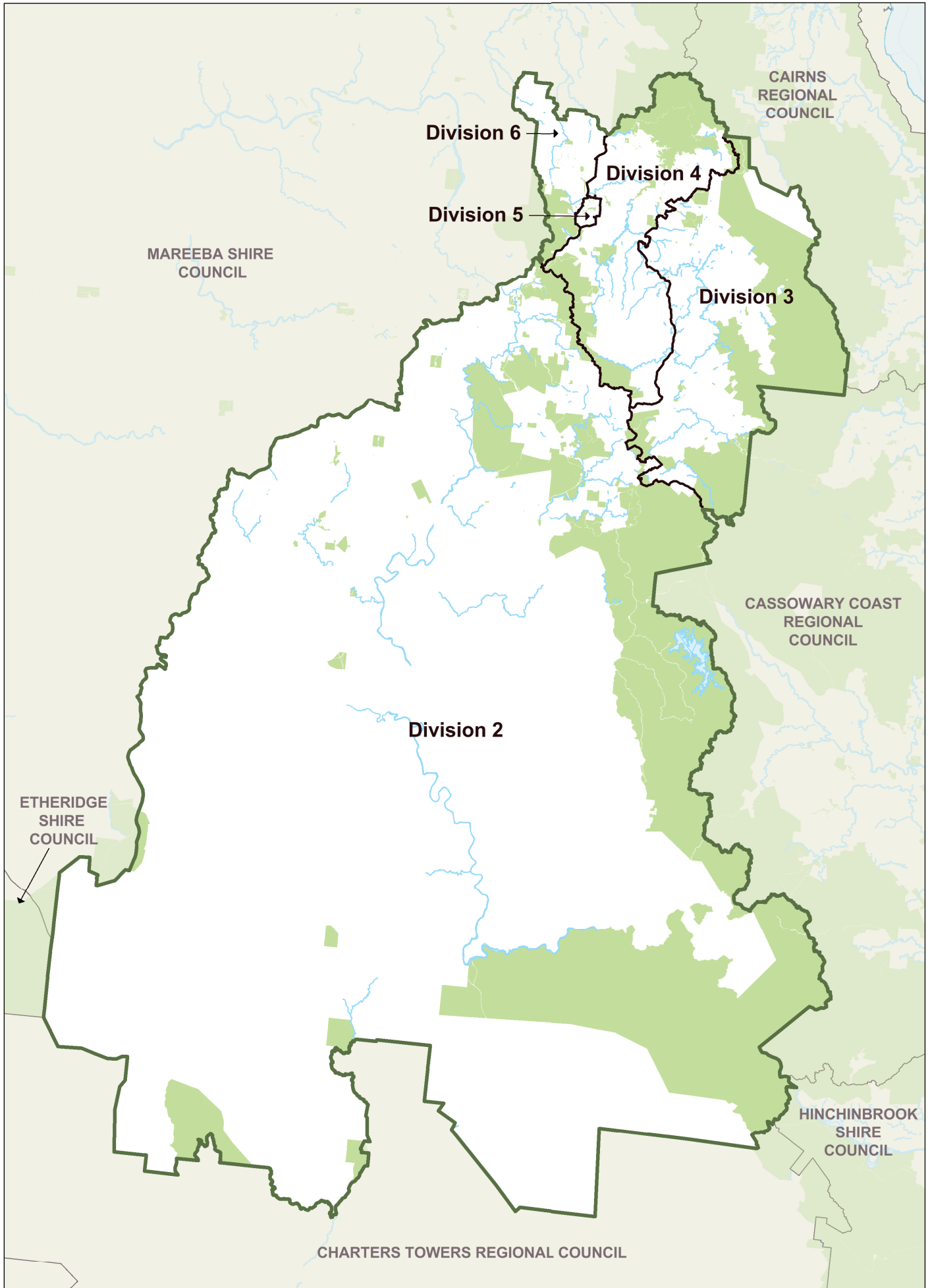
Division Name	Enrolment as at 23/02/2015	(%) Deviation from Quota	Projected Enrolment as at 31/03/2016	(%) Deviation from Quota	Projected Enrolment as at 28/02/2019	(%) Deviation from Quota
Division 1	2,680	-1.95	2,706	-2.27	2,792	-3.04
Division 2	2,667	-2.42	2,703	-2.38	2,783	-3.35
Division 3	2,799	+2.41	2,828	+2.14	2,912	+1.13
Division 4	2,711	-0.81	2,755	-0.5	2,892	+0.43
Division 5	2,896	+5.96	2,932	+5.89	3,053	+6.03
Division 6	2,646	-3.19	2,689	-2.88	2,845	-1.2

APPENDIX A

Previous Electoral Divisions

TABLELANDS REGIONAL COUNCIL

EXISTING ELECTORAL DIVISIONS



APPENDIX B

**Minister's Referral
Council's Submission**



Hon Jackie Trad MP

Deputy Premier

Minister for Transport, Minister for Infrastructure,
Local Government and Planning and Minister for Trade

Our ref: MBN15/49

- 2 APR 2015

Mr Walter van der Merwe
Electoral Commissioner
Electoral Commission Queensland
GPO Box 1393
BRISBANE QLD 4001

Dear Mr van der Merwe

I am writing to you in relation to local government electoral reviews which have been undertaken in preparation for the 2016 local government elections.

I have recently received proposals from 14 local governments seeking a review of their existing electoral arrangements.

The proposals include submissions in relation to the internal divisional boundary distributions where it has been determined that the divisional boundaries are out-of-quota. In addition, four of those local governments have submitted additional proposals for voluntary changes to their existing arrangements.

I note that, under section 19 of *the Local Government Act 2009* (the Act), the Commission must consider whether the local government change is consistent with the Act and must consider my views on any proposed changes.

Having examined each of their proposals, I consider it appropriate to refer each matter to you for independent assessment and determination by the Local Government Change Commission.

For your reference, I have enclosed a summary of each divided local government's quota review, a copy of each proposal referred to you for review and additional supporting information to assist with your review.

Level 12 Executive Building
100 George Street Brisbane
PO Box 15009 City East
Queensland 4002 Australia
Telephone +61 7 3719 7100
Email deputy.premier@ministerial.qld.gov.au

If you require any further information, please contact Mr Max Barrie, Director, Program Implementation and Review on (07) 3452 6704 or max.barrie@dlgcr.qld.gov.au, who will be pleased to assist.

Yours sincerely



JACKIE TRAD MP
DEPUTY PREMIER

**Minister for Transport, Minister for Infrastructure,
Local Government and Planning and Minister for Trade**

Enc (15)

DIVIDED LOCAL GOVERNMENTS – QUOTAS AND PROPOSED VOLUNTARY CHANGES

<u>Local Government</u>	<u>Results of Review</u>	<u>No. of Divisions Out of Quota</u>	<u>Referral to Local Government Change Commission</u>
Banana Shire Council	Out-of-quota	2	Refer quota review
Bundaberg Regional Council	Out-of-quota	2	Refer: <ul style="list-style-type: none"> • quota review • proposal to abolish divisions • proposal to incorporate unallocated area into local government area
Cairns Regional Council	Out-of-quota	1	Refer quota review
Cassowary Coast Regional Council	In quota	0	No referral required
Fraser Coast Regional Council	Out-of-quota	2	Refer quota review
Gold Coast City Council	In quota	0	No referral required
Gympie Regional Council	In quota	0	No referral required
Ipswich City Council	Out-of-quota	5	Refer quota review
Isaac Regional Council	Out-of-quota	2	Refer quota review
Logan City Council	Out-of-quota	1	Refer quota review
Moreton Bay Regional Council	Out-of-quota	2	Refer quota review
North Burnett Regional Council	In quota	0	No referral required
Redland City Council	Out-of-quota	1 (out) and 1 (predicted)	Refer both quota reviews
Rockhampton Regional Council	Out-of-quota	2	Refer: <ul style="list-style-type: none"> • quota review • proposal to renumber divisions
Scenic Rim Regional Council	Out-of-quota	1 (out) and 1 (predicted)	Refer both quota reviews
South Burnett Regional Council	In quota	0	No referral required
Sunshine Coast Regional Council	Out-of-quota	2	Refer quota review
Tablelands Regional Council	Out-of-quota	3	Internal boundary review plus additional voluntary change proposal to increase councillor numbers already referred to Change Commission on 16 December 2014.
Townsville City Council	Out-of-quota	2	Refer quota review
Whitsunday Regional Council	Out-of-quota	1	Refer quota review

Tablelands Regional Council

Atherton Service Centre
PO Box 573, Atherton QLD 4883
Telephone: 1300 362 242

Office of the Chief Executive Officer
Ian Church
Chief Executive Officer
Telephone: (07) 4089 2394
Facsimile: (07) 4091 4300
Email: info@trc.qld.gov.au

24 February 2015

File Ref: GOV-ELE IMC:jmh

Mr Stephen Johnston
Acting Director General
Department of Local Government, Community Recovery & Resilience
P O Box 15009
CITY EAST QLD 4002

Dear Sir

ELECTORAL DIVISIONS QUOTAS

I refer to your correspondence of 6 February 2015 in which you request I advise whether any of Tablelands Regional Council divisions are out of quota.

I advise that a number of existing divisions are out of quota and that divisional boundaries need to be redrawn as a result of the de-amalgamation of the Mareeba Shire from the Tablelands Regional Council.

I refer to my correspondence to Minister Crisafulli of 10 November 2014 and the Minister's response of 19 December 2014, regarding this matter. (Copies attached for your information).

In the meantime Council will consider the establishment of future divisional boundaries and forward any suggestions to you.

Yours faithfully

IAN CHURCH
CHIEF EXECUTIVE OFFICER

Enclosure (2)



Tablelands Regional Council

Atherton Service Centre
PO Box 573, Atherton QLD 4883
Telephone: 1300 362 242

Department of Organisational Services
Matthew Hyde
Deputy Chief Executive Officer
Telephone: (07) 4089 2302
Facsimile: (07) 4091 4300
Email: info@trc.qld.gov.au

File Ref: GOV-BOU / GOV-ELE MEH:MN
Your Ref:

22 June 2015

Commissioner Walter van de Merwe
Electoral Commission of Queensland
Level 6, Forestry House
160 Mary Street
BRISBANE QLD 4000

Dear Commissioner

TABLELANDS REGIONAL COUNCIL BOUNDARIES REVIEW

I refer to the Change Commissioner's visit to the region to consult with the Tablelands community on the number of Councillors for the Tablelands Regional Council and possible divisional boundary locations.

At Council's ordinary meeting held on 18 June 2015 Council resolved as follows:

"That Council:

- 1. Write to the Change Commissioner and advise that Council's preference is for 6 divisions;*
- 2. Request the Change Commissioner consider the divisional boundaries proposed by Council as noted on Map B attached to these Minutes as Appendix 4, in order to meet the quotas and other requirements; and*
- 3. Advise the Change Commissioner that Council would be pleased if this map could be used as a basis for public consultation to assist the Commissioner in forming a decision."*

Accordingly, attached is Map B showing the divisional boundaries proposed by Council for consideration by the Change Commissioner to be used as a basis for public consultation to assist the Commissioner in forming a decision.

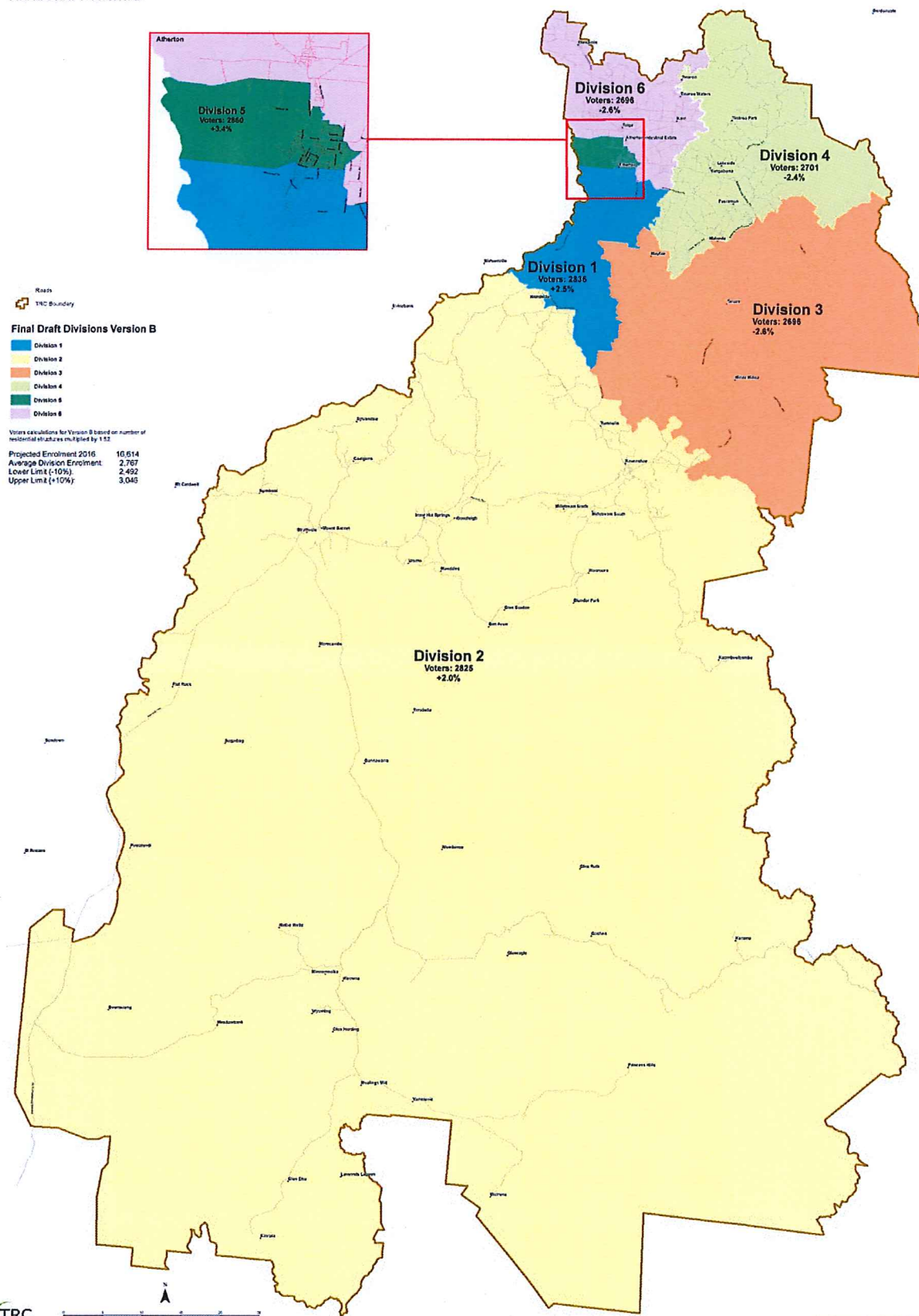
Should you require any further information please do not hesitate to contact the writer on 4089 2303.

Yours faithfully


MATTHEW HYDE
ACTING CHIEF EXECUTIVE OFFICER

Enclosure (1)

Tablelands Regional Council Electoral Divisions
FINAL DRAFT Version B



APPENDIX C

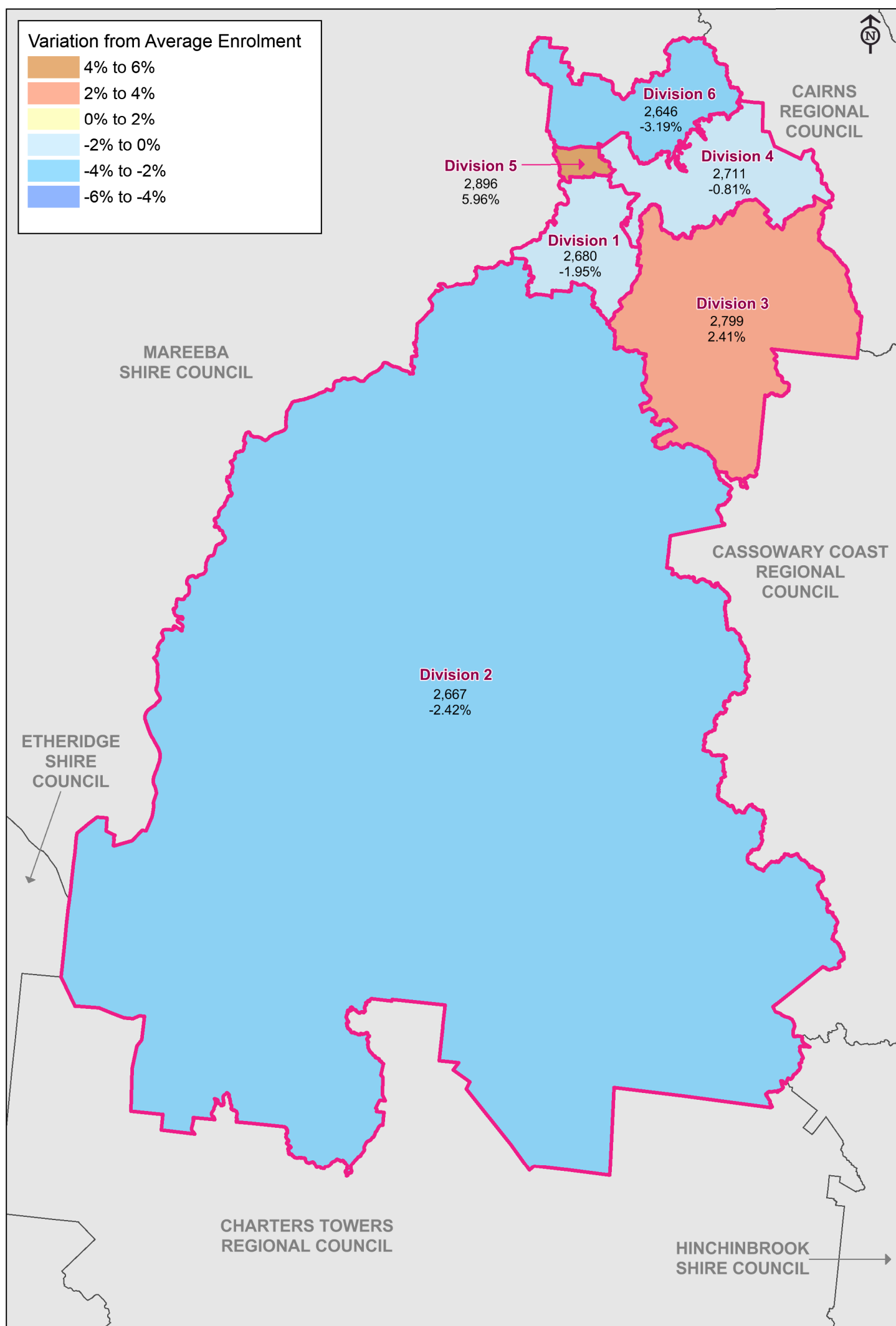
Change Commission's Proposed Determination

Summary Report of Proposed Division's Enrolment Figures

TABLELANDS REGIONAL COUNCIL

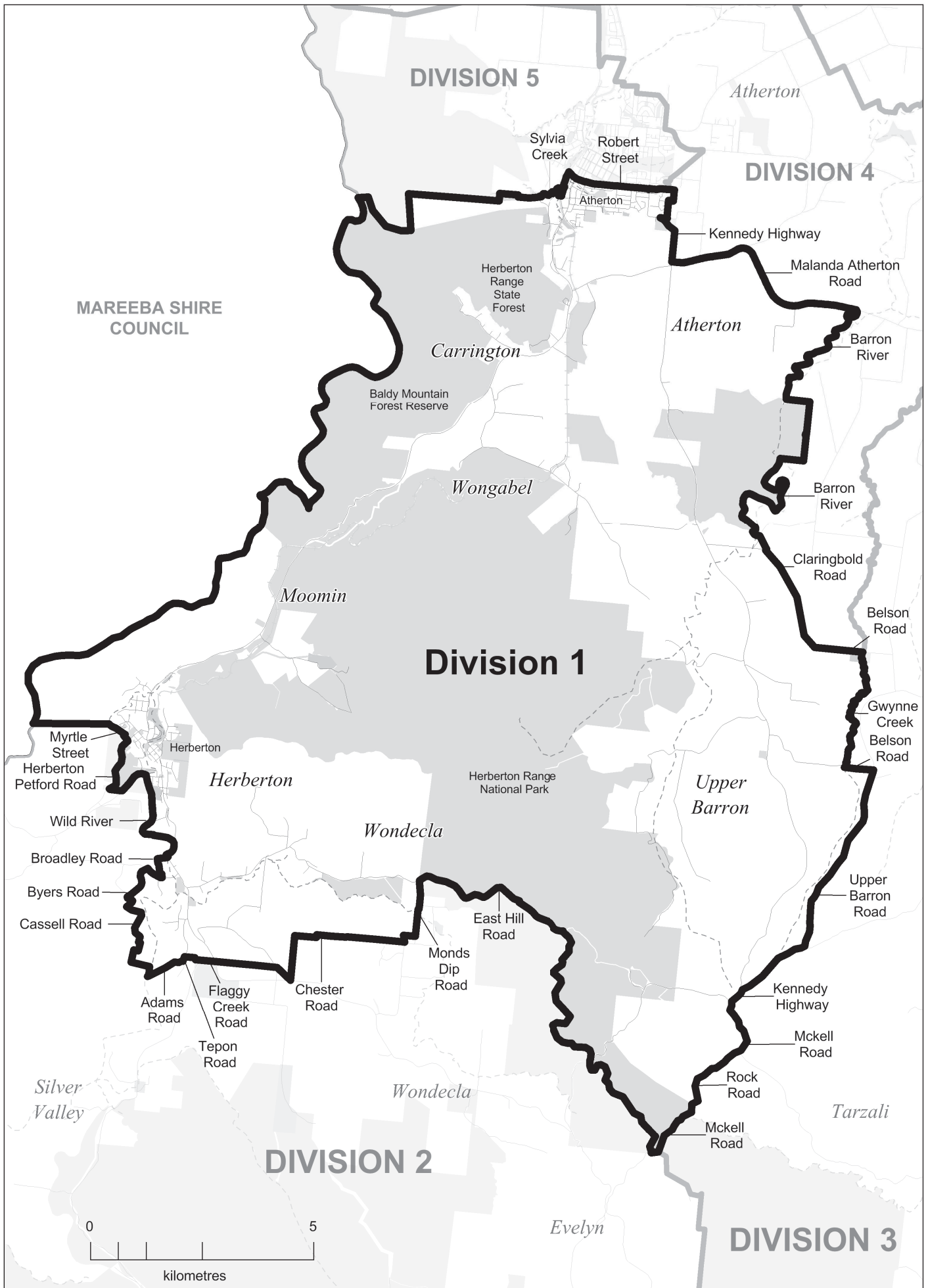
Proposed Division	Actual		Projected - 2016		Projected - 2019	
	Enrolment (23 February 2015)	Quota Variation (%)	Enrolment (31 March 2016)	Quota Variation (%)	Enrolment (28 February 2019)	Quota Variation (%)
DIVISION 1	2,680	-1.945	2,706	-2.269	2,792	-3.039
DIVISION 2	2,667	-2.421	2,703	-2.378	2,783	-3.351
DIVISION 3	2,799	2.409	2,828	2.137	2,912	1.129
DIVISION 4	2,711	-0.811	2,755	-0.5	2,892	0.434
DIVISION 5	2,896	5.958	2,932	5.893	3,053	6.025
DIVISION 6	2,646	-3.189	2,689	-2.883	2,845	-1.198
Actual Total	16399		16613		17277	
Actual Average	2733		2769		2880	
Actual Lower Limit	2,460		2,492		2,592	
Actual Upper Limit	3,006		3,046		3,167	
			Projected Total	Projected Total		
			Projected Average	Projected Average		
			Projected Lower Limit	Projected Lower Limit		
			Projected Upper Limit	Projected Upper Limit		

TABLELANDS REGIONAL COUNCIL PROPOSED DIVISION BOUNDARIES



2015 PROPOSED DIVISIONAL BOUNDARIES

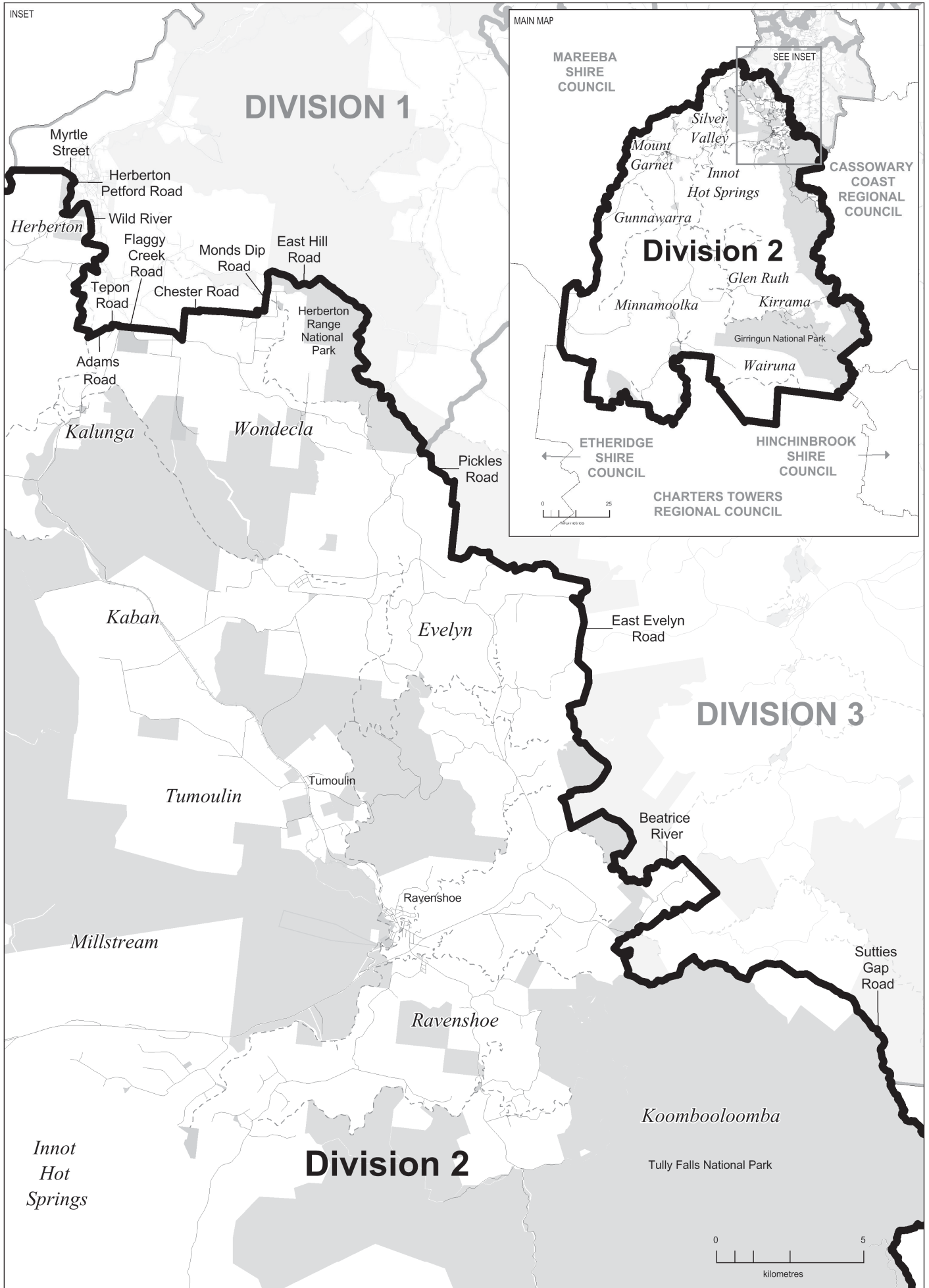
DIVISION 1



Proposed Division Boundary
 Proposed Adjacent Division Boundary
 Road
 Railway
 Watercourse
 Waterbody
 Park / Reserve

2015 PROPOSED DIVISIONAL BOUNDARIES

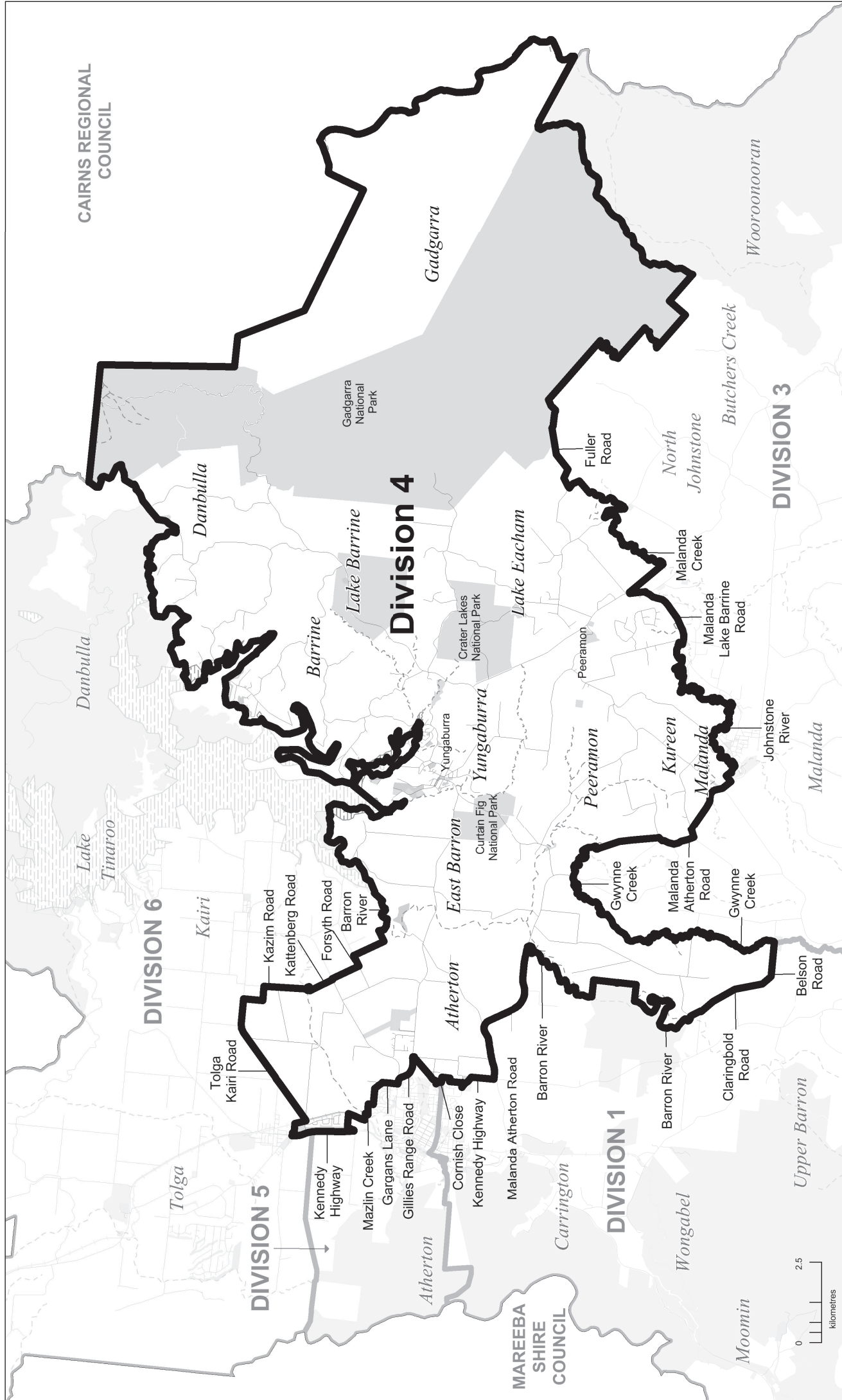
DIVISION 2



DIVISION 3

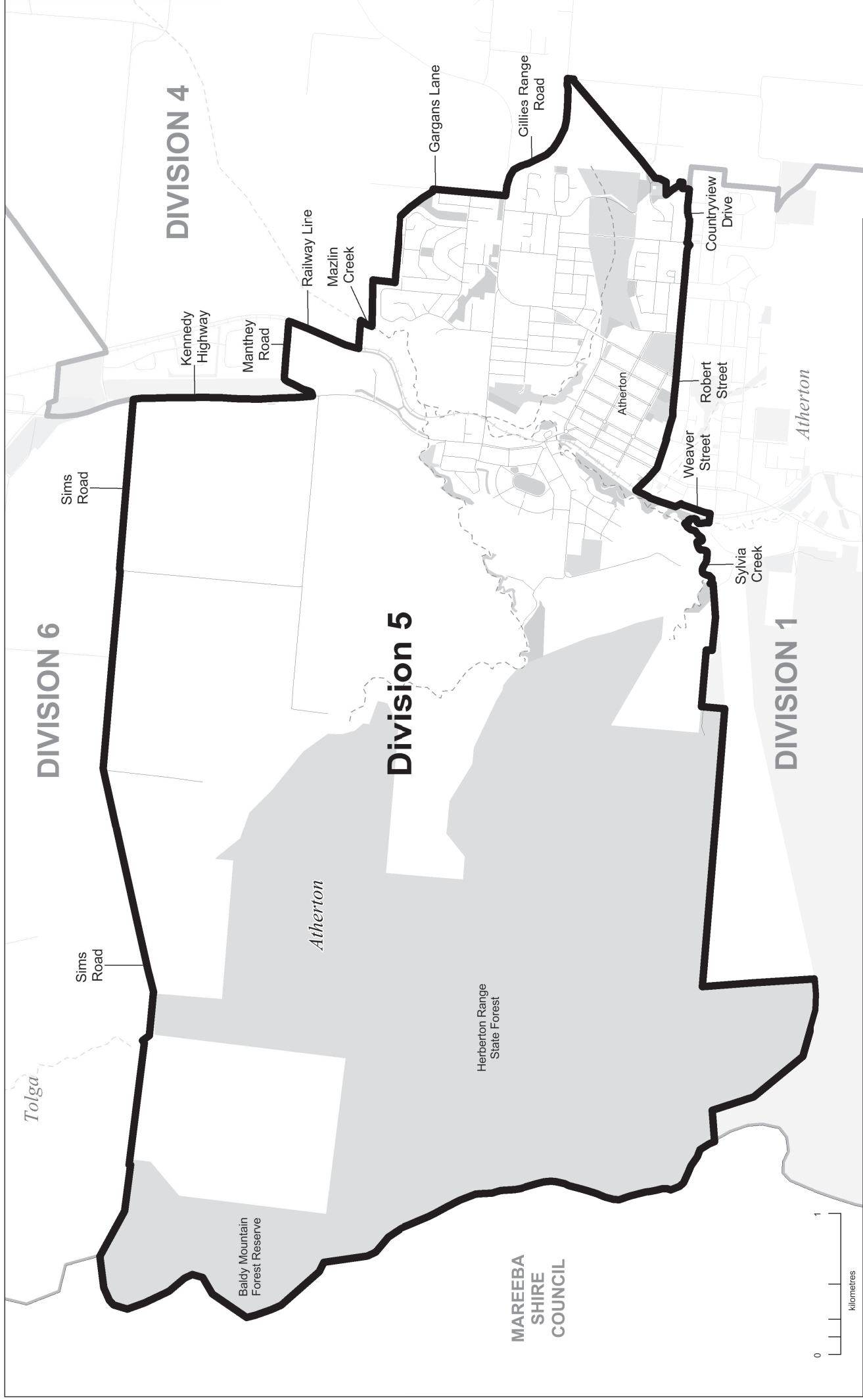


DIVISION 4

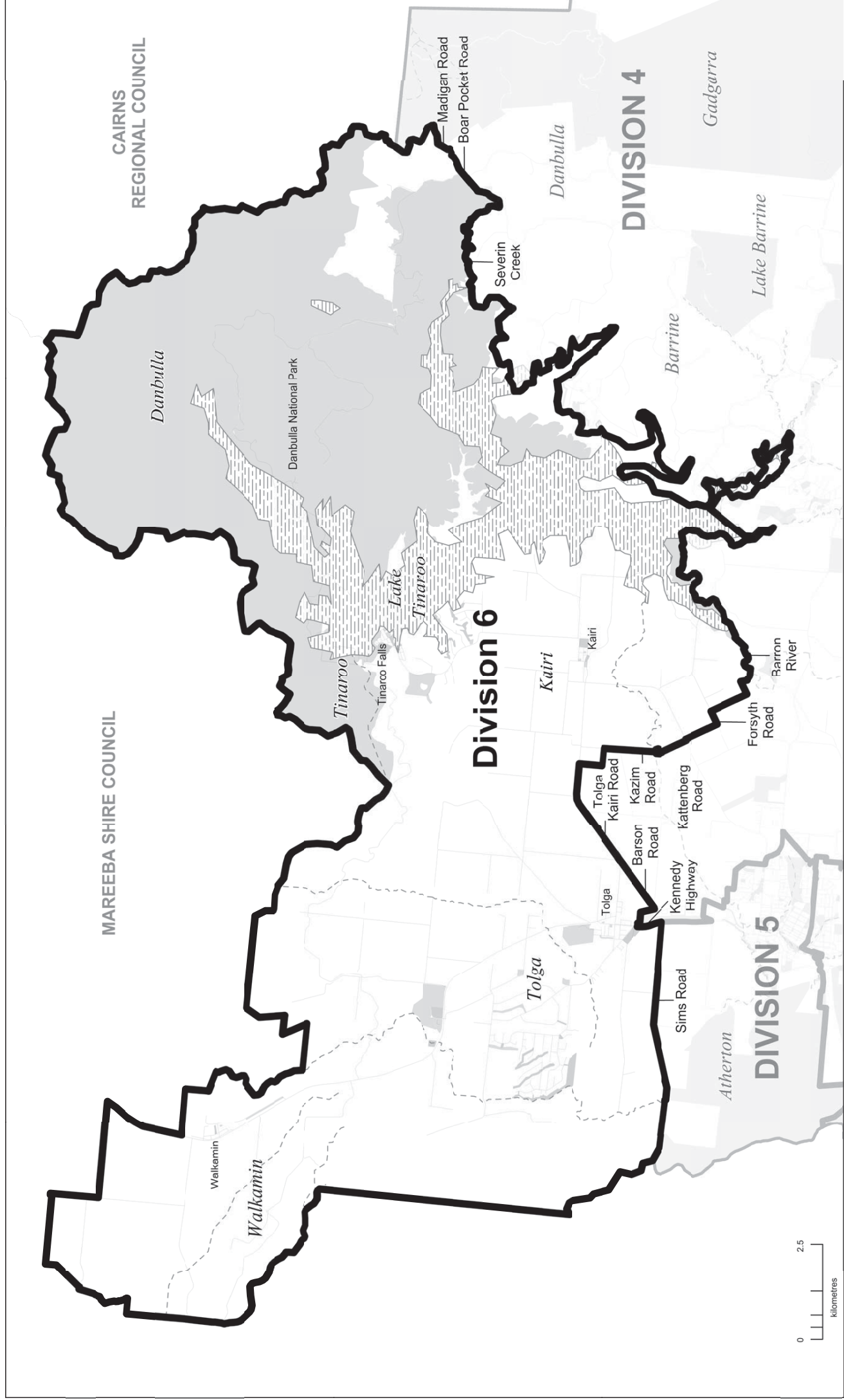


2015 PROPOSED DIVISIONAL BOUNDARIES

DIVISION 5



DIVISION 6



APPENDIX D

**Invitation for Objections to the Proposal
Comments to the Proposed Determination**

LOCAL GOVERNMENT CHANGE COMMISSION TABLELANDS REGIONAL COUNCIL

INVITATION FOR OBJECTIONS TO THE PROPOSAL

The Tablelands Regional Council has advised that its electoral divisions no longer meet the quota requirements set down in the *Local Government Act 2009 (Act)*. The Minister responsible for Local Government has in turn referred the matter to the Local Government Change Commission for an independent assessment.

The Commission now invites written objections from interested persons and bodies' relating to the council's proposed **six electoral divisions**, to be lodged **on or before 5.00pm Friday 7 August 2015**.

For this phase of the review, the enrolment for Tablelands Regional Council as at 23 February 2015 is being used. The total enrolment was 16,399. The Commission has determined that 2,733 is the reasonable proportion of electors for an electoral division. Section 17 of the Act requires the Commission to ensure that the number of enrolled electors in all divisions does not differ from this reasonable proportion by $\pm 10\%$. In order to meet the enrolment criteria set out in the Act, the number of electors in each division must be within the minimum of 2,460 and the maximum of 3,006. Furthermore, the Act requires that the reasonable proportion of electors must be worked out as near as practicable to the time when the change is to happen to ensure demographic representation for each division of Tablelands Regional Council. Projected enrolment for March 2016 and February 2019 has been used to assist with this requirement.

Further information about the review process, reference material, maps, guidelines and advice on preparing objections to the proposal may be found on the Electoral Commission Queensland (ECQ) website (www.ecq.qld.gov.au); under ELECTORAL DISTRICTS then LOCAL GOVERNMENT AREAS then LOCAL GOVERNMENT REVIEWS then click Tablelands Regional.

Anyone interested in lodging an objection should note that all objections will be published on the Commission's website in their entirety and in a publication.

Objections should be marked TABLELANDS and may be:

- posted to:
Local Government Change Commission, GPO Box 1393, BRISBANE, QLD 4001 or
- personally delivered to:
Electoral Commission Queensland, Level 6, Forestry House,
160 Mary Street, Brisbane, between the hours of 9.00 am and 5.00 pm or
- lodged by email to: tablelandsregionalcouncilreview@ecq.qld.gov.au or
- lodged via online form:
Which can be found on the ECQ website (www.ecq.qld.gov.au) under ELECTORAL DISTRICTS then LOCAL GOVERNMENT AREAS then LOCAL GOVERNMENT REVIEWS then click on Tablelands Regional and scroll to the bottom of the Proposed Determination Section.

It would assist the Commission if anyone intending to submit objections accompanies them with the electronic mapping data if this has been prepared, preferably in MapInfo and/or KML format in projection GDA94 – Longitude/Latitude (Australia GDA94).

For any assistance related to the review matter please refer to the Commission's website, or contact the Commission on 1300 881 665 for assistance.

Walter van der Merwe

Change Commissioner
Electoral Commission Queensland

Blaze071728

071728
M6x3_188hx129w
Cairns Post
Atherton Tablelander
Mareeba Express
Tableland Advertiser

Bob Richardson
45 Riverstone Road
GORDONVALE 4865

Phone 07 40 56 1389
Mobile 0427 561459

Tuesday, 4th August, 2015

Mr. Walter van der Merwe
Change Commissioner
Electoral Commission of Queensland
GPO Box 1393
BRISBANE QLD 4001.



Tablelands Regional Council

Objection to proposed internal divisional boundaries

Advertisement: - Cairns Post

Saturday, 18th July, 2015

Dear Sir

My objection is not about the proposed boundaries as shown on the Electoral Commission, Queensland website.

It is the process used by the Change Commission, that is, asking the Tablelands Regional Council to make a submission on what they believe the boundaries should be, and then calling for objections to their submission.

I accept that this process is allowed under the Local Government Act 2009, however I believe that this process may give the group in power at a particular council an unfair advantage over other Councillors and the general public by they nominating the boundaries that suit them, and the rest having to try and have them changed by the way of an 'objection'.

I believe that the process that exist for the State electoral redistributions should apply for Local Government internal boundary redistributions.

If that means commencing the process earlier than March of the year preceding the Local Government elections, and/or extra resources are needed to carry out this process, so be it.

Electoral boundaries are an integral part of representation in a democracy, no matter, at what level of Government, and the process of obtaining those boundaries, must be seen to be transparent and fair, as well as being; otherwise the State could be perceived as drifting back to the 1980's when it was referred to as the '*Moonlight State*'.

Yours sincerely

A handwritten signature in black ink, appearing to read 'R. J. Richardson', written in a cursive style.

R. J. Richardson

4 AUG 2015.

ELECTORAL COMMISSIONER — TRC. (LOCAL GOVERNMENT).
BRISBANE.

I OBJECT to this UNDEMOCRATIC INCREASE to 6 COUNCILLORS
to the above council which YOU CONDUCTED (wasted money)
RECENTLY.

THERE IS NO REASON WHY 6 COUNCILLORS WITH LITTLE INCREASE
in population, BE APPOINTED TO "SOLVE" THE MAYOR HAVING A
CASTING VOTE.

REDUCING THE COUNCILLORS NUMBER TO 4 WITH THE MAYORS VOTE
WILL EVEN (ODD NUMBER) A "JUST" + FAIR VOTE ON TOPICS.

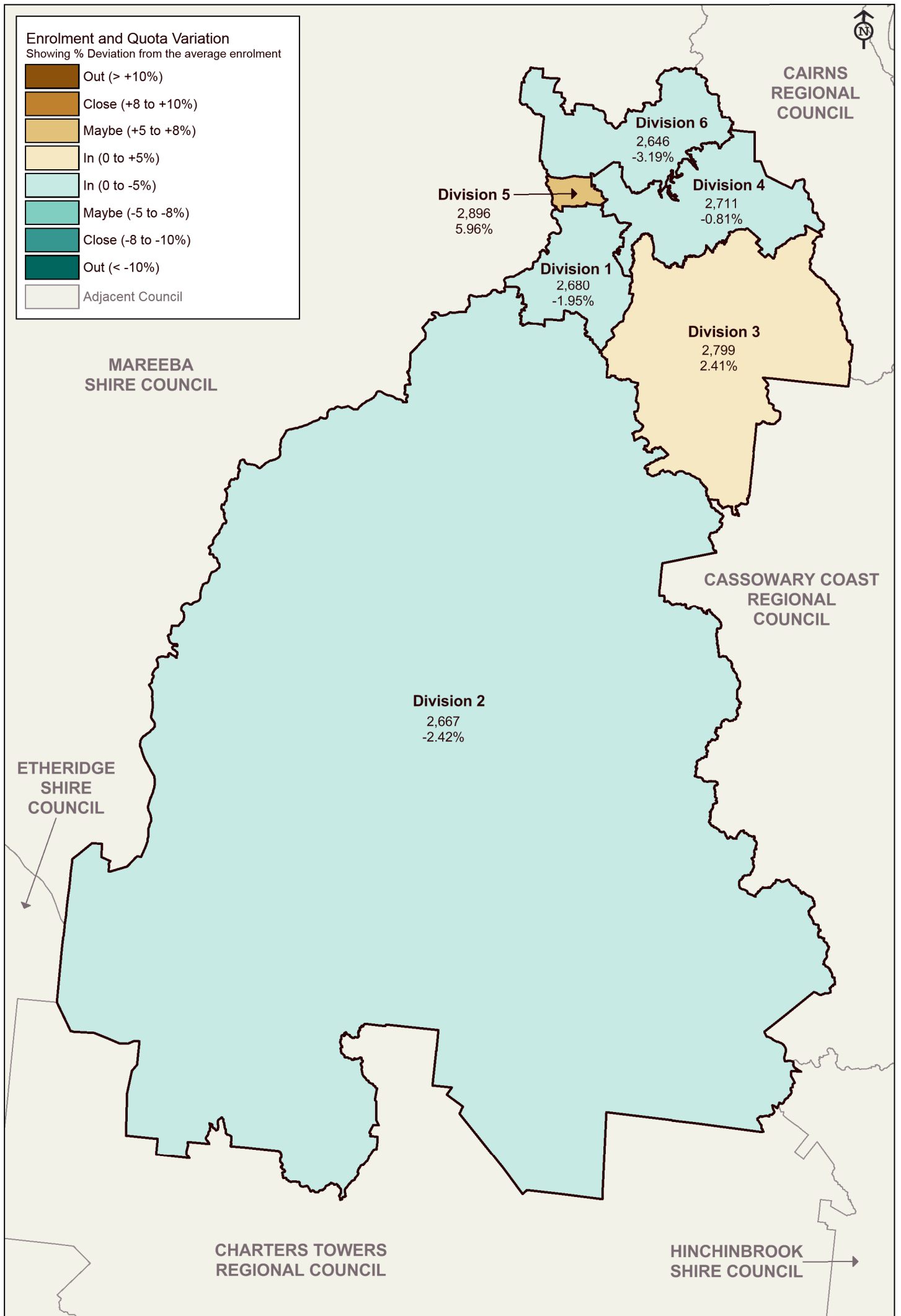
Yours
✓ PAUL KNEUBAUER. (MAYORAL CANDIDATE)
P.O. Box 557 - RAVENSHOE.

cc. LOCAL GOV. MINISTER.

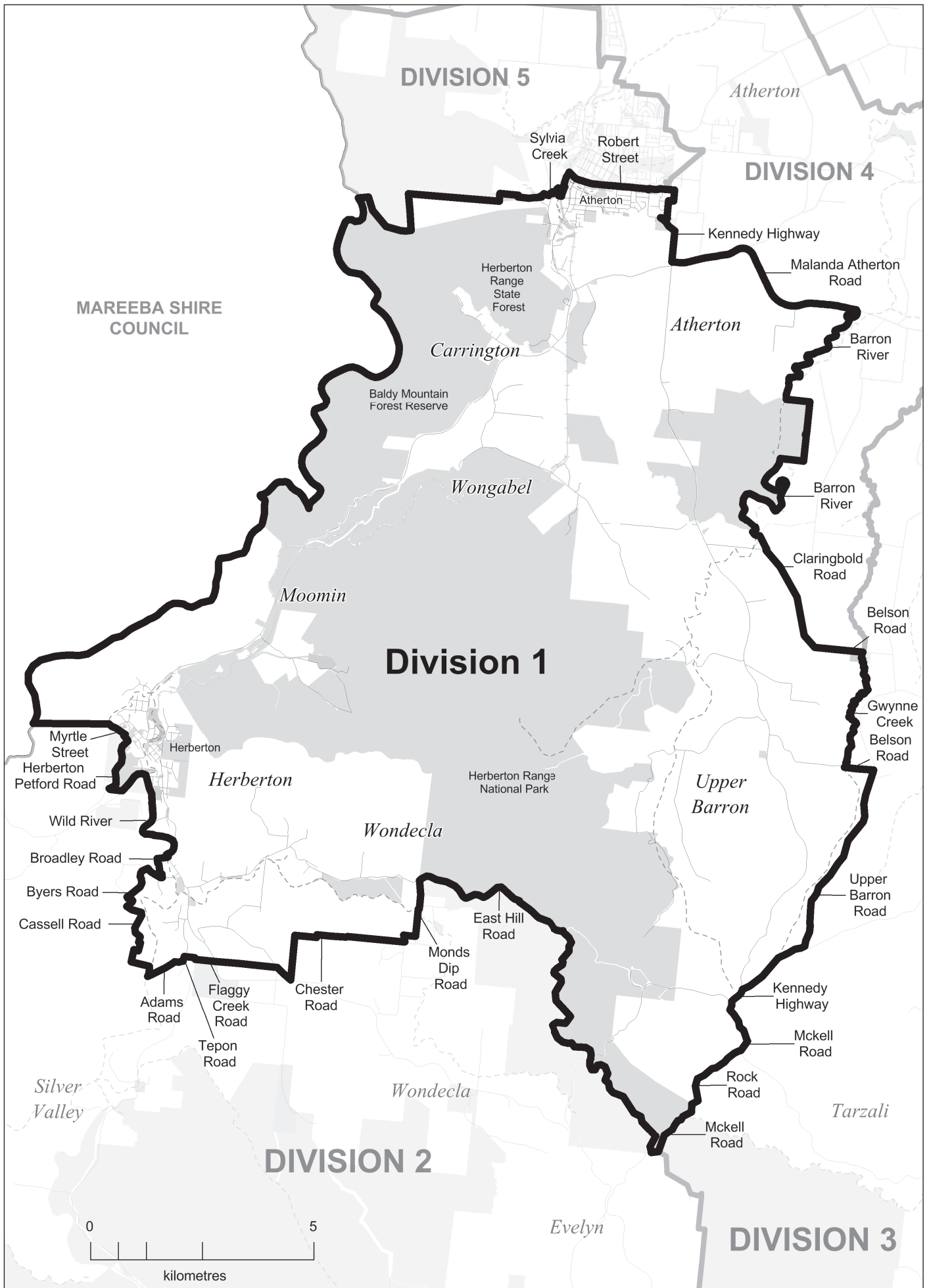
APPENDIX E

**Maps of Council's Electoral
Divisions for 2016 Elections**

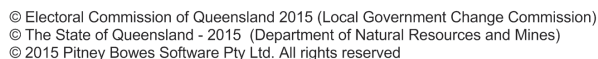
TABLELANDS REGIONAL COUNCIL FINAL DIVISION BOUNDARIES



DIVISION 1



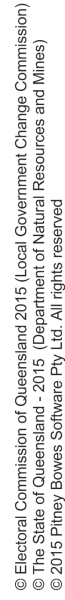
DIVISION 2



DIVISION 3

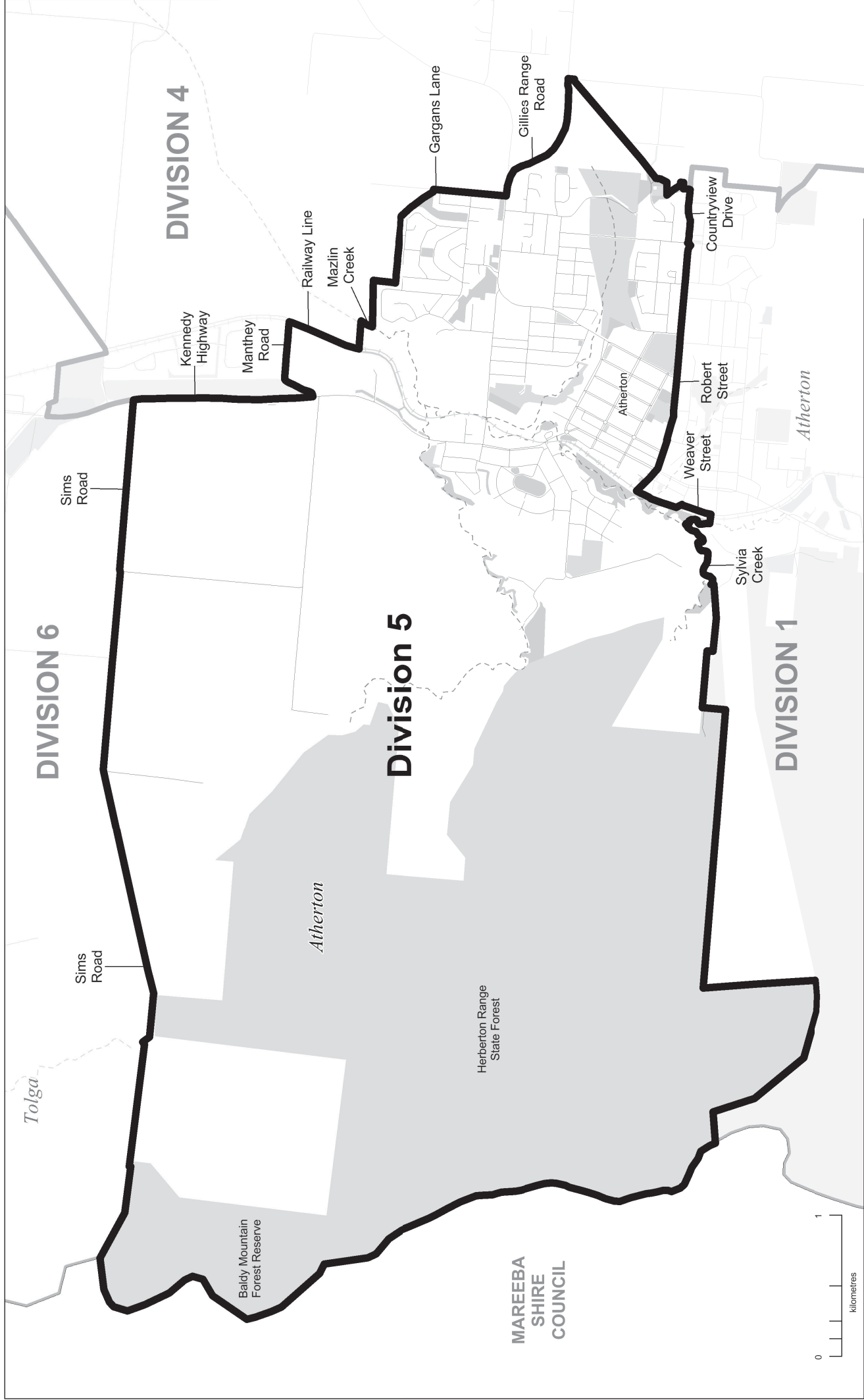


DIVISION 4



2015 FINAL DIVISIONAL BOUNDARIES

DIVISION 5



2015 FINAL DIVISIONAL BOUNDARIES

DIVISION 6



Final Division Boundary
Final Adjacent Division Boundary

Road
Railway

Watercourse
Waterbody

Park / Reserve

