



LOCAL GOVERNMENT CHANGE COMMISSION

2015

REDIVISION OF ELECTORAL DIVISIONS WITHIN BANANA SHIRE COUNCIL

FINAL DETERMINATION

AUGUST 2015



LOCAL GOVERNMENT CHANGE COMMISSION

2015 REDIVISION OF ELECTORAL DIVISIONS WITHIN BANANA SHIRE COUNCIL

FINAL DETERMINATION

AUGUST 2015

Electoral Commission of Queensland
Level 6, 160 Mary Street, Brisbane Qld 4000
GPO Box 1393, Brisbane Qld 4001

Telephone: 1300 881 665
Facsimile: (07) 3036 5776
Website: www.ecq.qld.gov.au

TABLE OF CONTENTS

FOREWORD	3
CHAPTER 1 – INTRODUCTION	4
TERMS OF REFERENCE	4
LEGISLATIVE PROVISIONS	4
DETERMINING THE QUOTA.....	4
<i>Technical Process</i>	5
Table 1 – Enrolment, Projections and Averages.....	5
CHAPTER 2 – THE REVIEW PROCESS	6
CHAPTER 3 – FINAL DETERMINATION.....	7
CURRENT ENROLMENT	7
Table 2 – Summary of Enrolments for the Current Electoral Divisions	7
PROPOSED DETERMINATION	7
OBJECTION TO THE PROPOSED DETERMINATION.....	8
FINAL DETERMINATION.....	8
Table 3 – Summary of Enrolments for the Final Electoral Divisions	8
APPENDIX A Previous Electoral Divisions	
APPENDIX B Minister's Referral and Council's Submission	
APPENDIX C Invitation for Suggestions	
APPENDIX D Commission's Proposed Determination	
APPENDIX E Invitation for Objections to the Proposal Comments to the Proposed Determination	
APPENDIX F Maps of Council's Electoral Division for 2016 Elections	

FOREWORD

This report outlines the Final Determination for the redivision of electoral divisions within Banana Shire.

The *Local Government Act 2009 (Qld)* (the Act) provides for a Local Government Change Commission (the Change Commission) to conduct the assessment phase of the boundary change process. The Act also provides for the Change Commission to be the appointed independent assessment body for boundary changes within Banana Shire.

The Change Commission is made up of the Electoral Commissioner or a combination of the Electoral Commissioner, the Deputy Electoral Commissioner and a casual Commissioner. The Change Commission for this review is made up of:

- Mr Walter van der Merwe, Electoral Commissioner; and
- Mr Gregory Rowe, casual Commissioner (appointed on 13 November 2015 for three years by the Governor in Council).

On 2 April 2015 a reference was made to the Change Commission by the Minister responsible for Local Government (see Appendix B).

For electoral purposes Banana Shire is divided into six electoral divisions. This booklet outlines the Change Commission's Final Determination for the boundaries of the divisions. It also sets out the reasons for the Change Commission's determination. The Change Commission's proposals were adopted unanimously at a meeting held on Thursday 6 August 2015, both Commissioners were present.

Chapter 1 of this booklet provides an introduction to the Change Commission's requirements for undertaking an assessment of the internal boundaries. Chapter 2 presents a summary of the review process that was undertaken. A more detailed outline of the Final Determination appears in Chapter 3. Maps of the final boundary changes are in Appendix F.

In accordance with the Act the Change Commission may conduct the review in any way that it considers appropriate. To this end, the Change Commission provided data on the current boundaries and enrolment statistics as sourced from the Australian Electoral Commission (AEC) as at 23 February 2015. The Change Commission called for both suggestions and objections to the proposed boundary changes. No public submissions or objections were received.

The Banana Shire Council had provided an initial written submission and maps prior to calling for suggestions. Council then expressed their support for the changes detailed in the Proposed Determination with one exception. The Commission is appreciative of the Council for its submission and correspondence throughout this process.

The Commissioners would also like to acknowledge the valuable assistance, expertise and work effort provided by the mapping and support staff of the Electoral Commission Queensland including Zonka Petruskevsa, Kurt Bonair, Moira McNeil, Yan Liu, Lesley Trost and Elise Arklay and extend their thanks to the Queensland Treasury for the population projection figures.

Walter van der Merwe and Gregory Rowe

Change Commission

CHAPTER 1 – INTRODUCTION

TERMS OF REFERENCE

On 2 April 2015 the Change Commission received a reference to review the electoral arrangements of the Banana Shire Council from the Honourable Jackie Trad MP, Minister responsible for Local Government (see Appendix B).

LEGISLATIVE PROVISIONS

The Banana Shire Council has 9,274 electors (as at 23 February 2015). The Council is divided into six electoral divisions. Each division elects one Councillor while the Mayor is elected by all voters in the local government area. Elections are set by date to be held every four years as prescribed by the *Local Government Electoral Act 2011*. The next Banana Shire Council election is scheduled for 19 March 2016.

The *Local Government Act 2009 (Qld)* (the Act) allows for changes to divisions in local government areas to ensure that each division has a reasonable proportion of electors. Pursuant to Section 22 of the Act, the Change Commission for this review was constituted by the Electoral Commissioner and the casual Commissioner.

Section 15 of the Act requires the Banana Shire Council to review whether each of the divisions has a reasonable proportion of electors and give the Electoral Commissioner and the Minister a written notice of the results of the review no later than 1 March in the year that is one year before the year of the quadrennial elections. The date referred to in this report is known as the information date. The Council reported that two divisions (Divisions 2 and 5) did not meet the reasonable proportion of elector's requirements on 10 March 2015.

Under the provisions of the Section 19 of the Act, in reviewing the division of a local government area the Change Commission is required to consider:

- 1) The Change Commission is responsible for assessing whether a proposed local government change is in the public interest.
- 2) In doing so, the Change Commission must consider:
 - a. whether the proposed local government change is consistent with a Local Government Act; and
 - b. the views of the Minister about the proposed local government change; and
 - c. any other matters prescribed under a regulation.

The Change Commission is required to release the outcomes of its assessment to the public and the reasoning behind the results, by publishing its findings in a newspaper circulating generally in the local government area, in the Government Gazette and on the Electoral Commission's website. The Commission must also give the results of its assessment to the Minister for Local Government for implementation. The method of implementation is by way of regulation by the Governor in Council.

A decision of the Change Commission is not subject to appeal.

DETERMINING THE QUOTA

The Act specifies binding quota requirements. A quota is determined by dividing the total number of electors in the local government area by the number of councillors (other than the mayor), plus or minus:

- for a council with more than 10,000 electors – 10%; or
- for any other council – 20%.

Section 15 of the Act allows for a margin of 20 per cent for Banana Shire to be adopted in relation to determining a reasonable proportion of electors. For ease of understanding the proportion of electors and the margin will be referred to in this document as “quota”.

The Change Commission, when formulating its proposals must ensure that each division complies with the quota as near as practicable to the election date. There is no latitude allowed for the Change Commission to determine electoral boundaries that do not comply with these requirements.

Technical Process

Key to the redivision is elector count information sourced from the electoral roll organised around the smallest unit for the release of Census data known as a Statistical Area (SA1) utilised by the Australian Bureau of Statistics.

The Australian Electoral Commission, which maintains the electoral roll for Queensland pursuant to a joint roll agreement, provided statistics from the roll on numbers of electors in each SA1 in the area of the Banana Shire on 23 February 2015. Projections of population movement were then applied to the SA1s using data provided by Queensland Treasury. Future dates for projections were set at 31 March 2016 (just after the next quadrennial election) and 28 February 2019 (the last opportunity before the information date preceding the March 2020 election).

Table 1 – Enrolment, Projections and Averages

	23 February 2015	31 March 2016	28 February 2019
Number of divisions	6	6	6
Enrolment	9,274	9,313	9,354
Average electors per division	1,546	1,552	1,559
Permitted Maximum Number (+20%) per division	1,855	1,863	1,871
Permitted Minimum Number (-20%) per division	1,237	1,242	1,247

CHAPTER 2 – THE REVIEW PROCESS

The Banana Shire Council is divided into six single-member divisions. By letter dated 10 March 2015, the Council advised the Minister that Divisions 2 and 5 were out of tolerance.

Based on 23 February 2015 enrolment data, the Change Commission calculated a quota (average enrolment) of 1,546, with a minimum of 1,237 (-20%) and an upper limit of 1,855 (+20%) electors permissible in each district.

Accompanying its notice to the Minister, the Banana Shire Council lodged a proposed solution that involved changes to Divisions 1, 2, 4, 5 and 6. Relevant correspondence is attached at Appendix B.

In accordance with Section 19 (4) of the Act, a public notice was published on 1 May 2015 inviting suggestions from interested persons. The advertisement (see Appendix C) noted that received submissions would be made available for public inspection. Suggestions closed on 22 May 2015. No suggestions were received.

A second phase of consultation began on the 10 July 2015 following an advertised call for objections to the Commission's Proposed Determination (see Appendix E). Objections closed on the 31 July 2015. One objection was received from the Banana Shire Council.

In reaching its Final Determination the Change Commission took into account Council's submissions, as well as the projected future changes in electoral numbers provided by the Queensland Treasury.

Wherever possible, the Commission endeavours to devise boundaries that not only meet current quota requirements but are sustainable for at least two quadrennial elections and are in the public interest. The nature and extent of population growth or decline may render this impossible in some cases, and the Change Commission recognises the possibility that boundaries may need to be reviewed again in readiness for the 2020 quadrennial elections.

CHAPTER 3 – FINAL DETERMINATION

CURRENT ENROLMENT

The Banana Shire Council has a total of 9,274 enrolled electors spread across six divisions, with an average number of 1,546 electors per division. Applying the plus or minus tolerance of 20 per cent allowed by the Act, the minimum number of electors required for each division is 1,237, with a maximum of 1,855.

As can be observed in Table 2, Divisions 2 and 5 are currently out of quota. Division 2 is over the maximum allowable number of electors, while Division 5 is under the minimum. To address this imbalance in elector numbers, both Council and the Commission needed to alter the divisional boundaries to decrease the number of electors in Division 2 and increase the numbers of electors in Division 5. As part of its decision making process, the Change Commission has attempted to cater for future demographic trends, to keep all of the divisions within the Banana Shire Council in quota in the lead up to the 2020 quadrennial election.

Table 2 – Summary of Enrolments for the Current Electoral Divisions

Division Name	Enrolment as at 23/02/2015	(%) Deviation from Quota	Projected Enrolment as at 31/03/2016	(%) Deviation from Quota	Projected Enrolment as at 28/02/2019	(%) Deviation from Quota
Division 1	1,454	-5.93	1,462	-5.81	1,483	-4.87
Division 2	1,885	+21.95	1,911	+23.12	1,966	+26.11
Division 3	1,597	+3.32	1,598	+2.95	1,588	+1.86
Division 4	1,527	-1.21	1,521	-2.01	1,503	-3.59
Division 5	1,210	-21.72	1,216	-21.66	1,219	-21.81
Division 6	1,601	+3.58	1,605	+3.4	1,595	+2.31

PROPOSED DETERMINATION

The Change Commission received no response from the public in response to calling for suggestions in early May 2015. Therefore the Change Commission formulated its Proposed Determination based off its own modelling and the proposal put forward by the Banana Shire Council.

The Commission recommended minor alterations to the Council's proposal, shifting an additional 44 electors from Division 2 into Division 1 (146 electors in total). Council's proposed move of the Moura area from Division 4 into Division 5 was accepted; however the Commission rejected Council's proposal to move the boundary and subsequently nine electors from Division 6 into Division 5 (see Appendix D).

OBJECTION TO THE PROPOSED DETERMINATION

The Council responded to the Commission's Proposed Determination by objecting to the removal of their suggested change between Divisions 5 and 6 (see Appendix E). Again, no other public comment was received.

Council provided sufficient justification to show the significant community of interest argument for shifting nine electors from Division 6 into Division 5. Based on the information they provided, the Commission determined this boundary change was in the public interest and accepted the change as part of the final report. Council indicated their support for the Commission's proposed additional changes to Divisions 2 and 1, and the movement of an extra 44 electors.

FINAL DETERMINATION

The Commission was satisfied that its proposal was well-reasoned and satisfied the need to bring the divisions of Banana Shire into quota, while maintaining communities of interest. The addition of nine electors from Division 6 into Division 5, as suggested by the Council continues this theme of maintaining community interest.

The Commission recommends that its Proposed Determination with Council's additional change between Divisions 5 and 6 are to be the new boundaries. Projected growth figures suggest these changes are likely to keep all divisions within quota and are expected to prevent the need for future boundary changes prior to the 2020 local government elections.

The Change Commission's final recommendation to the Governor in Council is as follows:

- ***That for the purposes of the 2016 local government elections, the Banana Shire Council be redivided into six divisions as shown on the maps contained in Appendix F of this report.***

The Commission notes that implementation of this recommendation will give rise to the following divisional elector numbers:

Table 3 – Summary of Enrolments for the Final Electoral Divisions

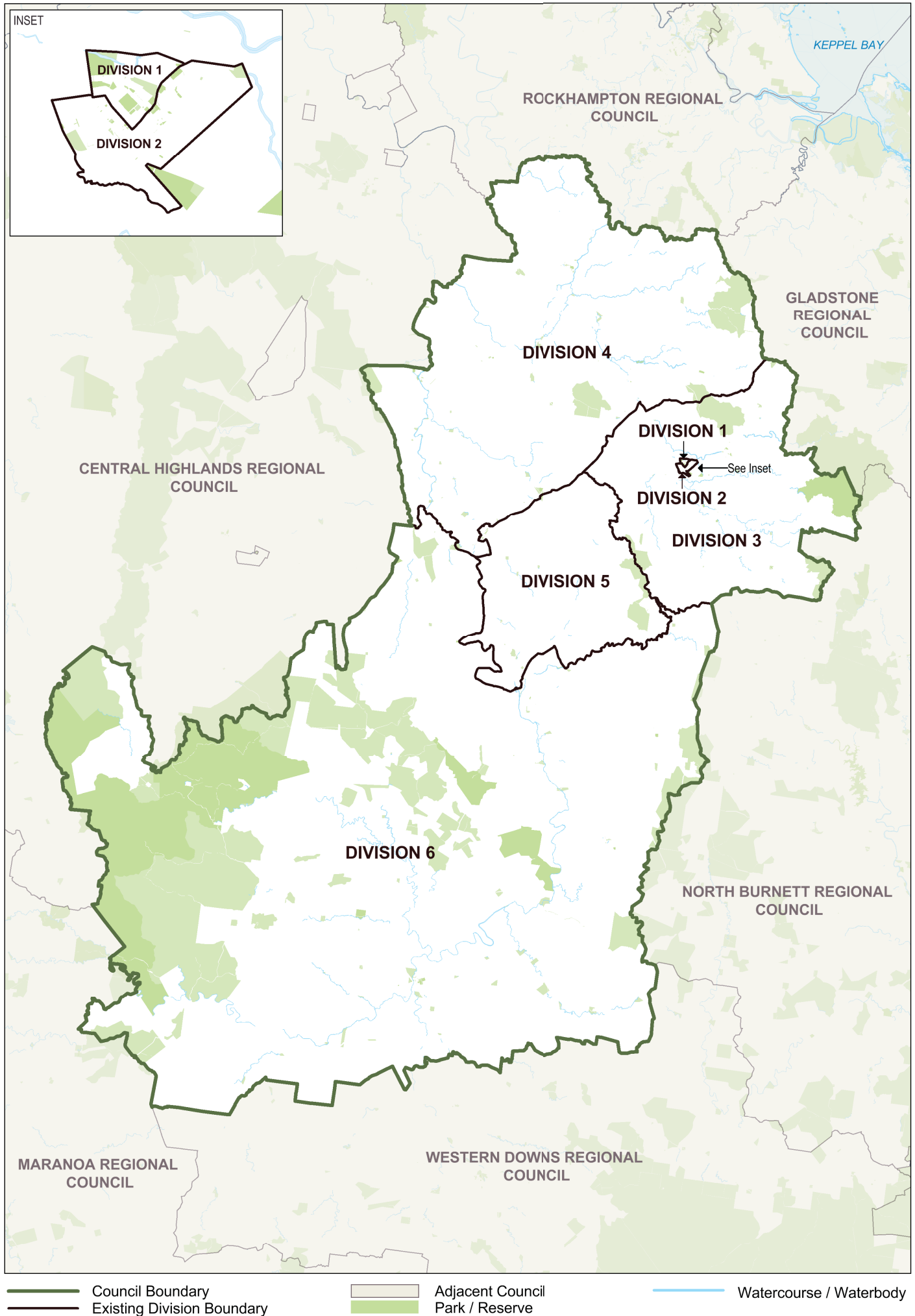
Division Name	Enrolment as at 23/02/2015	(%) Deviation from Quota	Projected Enrolment as at 31/03/2016	(%) Deviation from Quota	Projected Enrolment as at 28/02/2019	(%) Deviation from Quota
Division 1	1,600	+3.52	1,608	+3.61	1,630	+4.55
Division 2	1,739	+12.51	1,765	+13.72	1,819	+16.68
Division 3	1,597	+3.32	1,598	+2.96	1,588	+1.86
Division 4	1,430	-7.48	1,424	-8.25	1,406	-9.81
Division 5	1,316	-14.86	1,322	-14.82	1,325	-15.01
Division 6	1,592	+3.0	1,595	+2.77	1,586	+1.73

APPENDIX A

Previous Electoral Divisions

BANANA SHIRE COUNCIL

EXISTING ELECTORAL DIVISIONS



APPENDIX B

**Minister's Referral
Council's Submission**



Hon Jackie Trad MP

Deputy Premier

Minister for Transport, Minister for Infrastructure,
Local Government and Planning and Minister for Trade

Our ref: MBN15/49

- 2 APR 2015

Mr Walter van der Merwe
Electoral Commissioner
Electoral Commission Queensland
GPO Box 1393
BRISBANE QLD 4001

Dear Mr van der Merwe

I am writing to you in relation to local government electoral reviews which have been undertaken in preparation for the 2016 local government elections.

I have recently received proposals from 14 local governments seeking a review of their existing electoral arrangements.

The proposals include submissions in relation to the internal divisional boundary distributions where it has been determined that the divisional boundaries are out-of-quota. In addition, four of those local governments have submitted additional proposals for voluntary changes to their existing arrangements.

I note that, under section 19 of *the Local Government Act 2009* (the Act), the Commission must consider whether the local government change is consistent with the Act and must consider my views on any proposed changes.

Having examined each of their proposals, I consider it appropriate to refer each matter to you for independent assessment and determination by the Local Government Change Commission.

For your reference, I have enclosed a summary of each divided local government's quota review, a copy of each proposal referred to you for review and additional supporting information to assist with your review.

Level 12 Executive Building
100 George Street Brisbane
PO Box 15009 City East
Queensland 4002 Australia
Telephone +61 7 3719 7100
Email deputy.premier@ministerial.qld.gov.au

If you require any further information, please contact Mr Max Barrie, Director, Program Implementation and Review on (07) 3452 6704 or max.barrie@dlgcr.qld.gov.au, who will be pleased to assist.

Yours sincerely



JACKIE TRAD MP
DEPUTY PREMIER

**Minister for Transport, Minister for Infrastructure,
Local Government and Planning and Minister for Trade**

Enc (15)

DIVIDED LOCAL GOVERNMENTS – QUOTAS AND PROPOSED VOLUNTARY CHANGES

<u>Local Government</u>	<u>Results of Review</u>	<u>No. of Divisions Out of Quota</u>	<u>Referral to Local Government Change Commission</u>
Banana Shire Council	Out-of-quota	2	Refer quota review
Bundaberg Regional Council	Out-of-quota	2	Refer: <ul style="list-style-type: none"> • quota review • proposal to abolish divisions • proposal to incorporate unallocated area into local government area
Cairns Regional Council	Out-of-quota	1	Refer quota review
Cassowary Coast Regional Council	In quota	0	No referral required
Fraser Coast Regional Council	Out-of-quota	2	Refer quota review
Gold Coast City Council	In quota	0	No referral required
Gympie Regional Council	In quota	0	No referral required
Ipswich City Council	Out-of-quota	5	Refer quota review
Isaac Regional Council	Out-of-quota	2	Refer quota review
Logan City Council	Out-of-quota	1	Refer quota review
Moreton Bay Regional Council	Out-of-quota	2	Refer quota review
North Burnett Regional Council	In quota	0	No referral required
Redland City Council	Out-of-quota	1 (out) and 1 (predicted)	Refer both quota reviews
Rockhampton Regional Council	Out-of-quota	2	Refer: <ul style="list-style-type: none"> • quota review • proposal to renumber divisions
Scenic Rim Regional Council	Out-of-quota	1 (out) and 1 (predicted)	Refer both quota reviews
South Burnett Regional Council	In quota	0	No referral required
Sunshine Coast Regional Council	Out-of-quota	2	Refer quota review
Tablelands Regional Council	Out-of-quota	3	Internal boundary review plus additional voluntary change proposal to increase councillor numbers already referred to Change Commission on 16 December 2014.
Townsville City Council	Out-of-quota	2	Refer quota review
Whitsunday Regional Council	Out-of-quota	1	Refer quota review

Your Reference: DGBN15/69

Our Reference: RG:wn 15/02/OM003035-1676210 & 1778423 (CM10.1 & SM1.1)

Contact: Ray Geraghty

10 March 2015

Mr Max Barrie
Director
Program Implementation & Review
Department of Local Government, Community Recovery & Resilience
PO Box 15009
CITY EAST Q 4002

Dear Max

Re: Divisional Electoral Quotas

I refer to your recent letter regarding the above and I wish to advise that this matter was discussed by Council at its recent Ordinary Meeting.

Council acknowledges that both Division two and Division five **exceed** the allowable tolerances and are now out of quota.

After consulting with the relevant divisional Councillors, Council has endorsed the following proposals as its preferred options for resolving the issue.

This proposal is made after taking into account the communities of interest, potential future growth within the affected divisions and also practicalities with the suggested boundary changes.

Whilst Council is not privy to the population data that the Electoral Commission utilises, it is anticipated that these proposed boundary changes will bring all divisions within quota.

Division 2

Reassign the area within Kroombit Street, Tiamby Street, Kariboe Street and Orange Street from Division 2 to Division 1, as per Plan A attached.

Division 5

Reassign the area within Theodore-Moura Road, River Road, Dawson River, Dawson Highway and Nobbs Street, Moura from Division 6 to Division 5, as per Plan B attached (red hatch).

.../2

Division 5 continued

Reassign the area within the Dawson Highway, shire boundary and the Dawson River to the north from Division 4 to Division 5, as per Plan B attached (blue hatch).

Should you require any further information, please do not hesitate to contact me.

Yours sincerely



Ray Geraghty
CHIEF EXECUTIVE OFFICER

APPENDIX C

Invitation for Suggestions

QUEENSLAND CHANGE COMMISSION BANANA SHIRE COUNCIL

INVITATION FOR SUBMISSIONS

The Banana Shire Council has advised that its electoral divisions no longer meet the quota requirements set down in the Local Government Act. The Minister responsible for Local Government has in turn referred the matter to the Change Commission for independent assessment.

The Commission invites written suggestions from interested persons and bodies relating to the council's electoral divisions, to be lodged on or before **5.00 pm Friday 22 May 2015**.

For the purpose of this review, the Commission has determined that the average number of enrolled electors for electoral divisions is 1,546. Section 15 of the Act requires the Commission to ensure that the number of enrolled electors in all divisions does not differ from this average by more than 20%. Applying the specified level of tolerance means that the minimum number of electors in each division must be 1,237, with a maximum of 1,855. (These figures are as at 23 February 2015 and may need to be readjusted slightly depending upon population growth between now and the Local Government elections scheduled for March 2016.)

Further information about the review process and advice on formulating suggestions may be found on the Electoral Commission of Queensland website under Local Government Reviews.

Suggestions should be marked BANANA SHIRE and may be lodged:

- by posting to
Change Commissioner, Local Government Change Commission
GPO Box 1393, BRISBANE, QLD 4001
- by personal delivery, between the hours of 9.00 am and 5.00 pm to:
Electoral Commission of Queensland, Level 6, Forestry House, 160 Mary Street, Brisbane
- by email to bananashirecouncilreview@ecq.qld.gov.au or
- online form

It would assist the Commission if anyone intending to submit maps with written suggestions could do so by using maps of the present divisions which are available on the Commission's website, or by contacting the Commission on 1300 881 665 for assistance.

If you wish to lodge a submission, please note that all submissions will be published in their entirety (including name and address details) on the Commission's website.

Walter van der Merwe

**Change Commissioner
Electoral Commission of Queensland**

Blaze065812

APPENDIX D

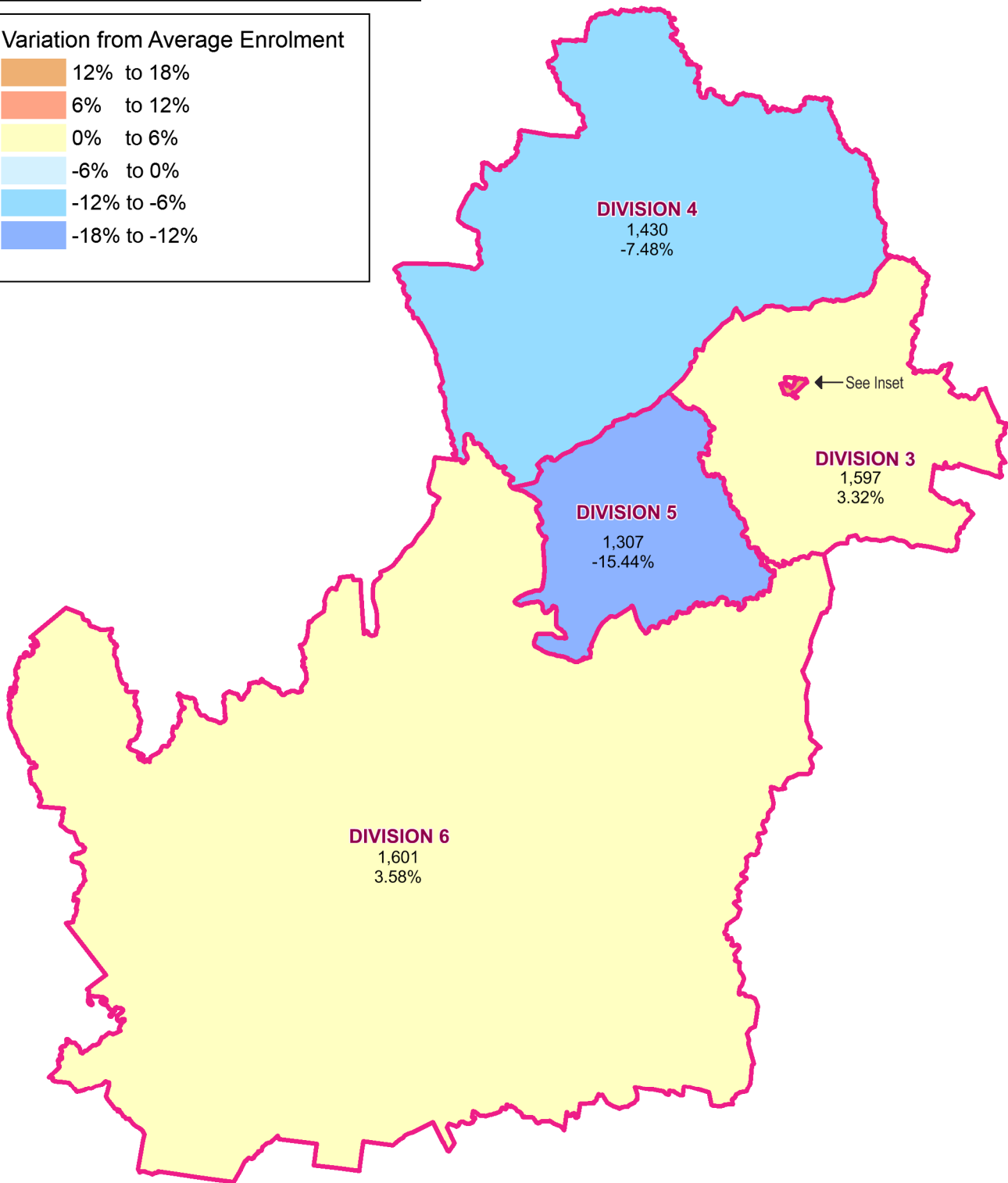
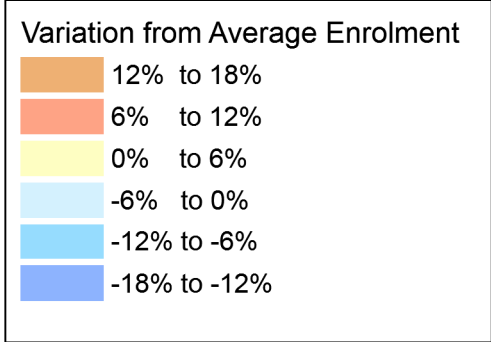
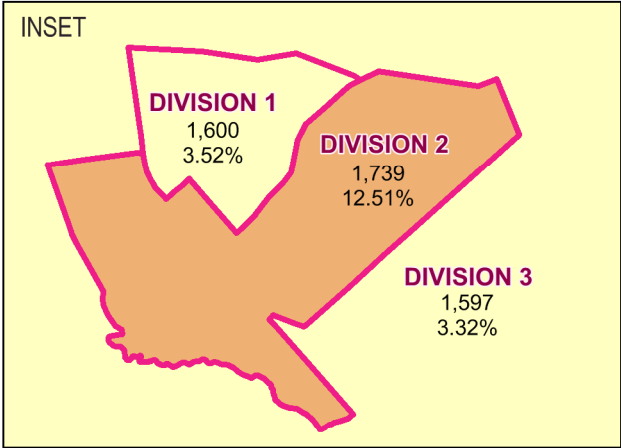
Commission's Proposed Determination

Summary Report of Proposed Division's Enrolment Figures

BANANA SHIRE COUNCIL

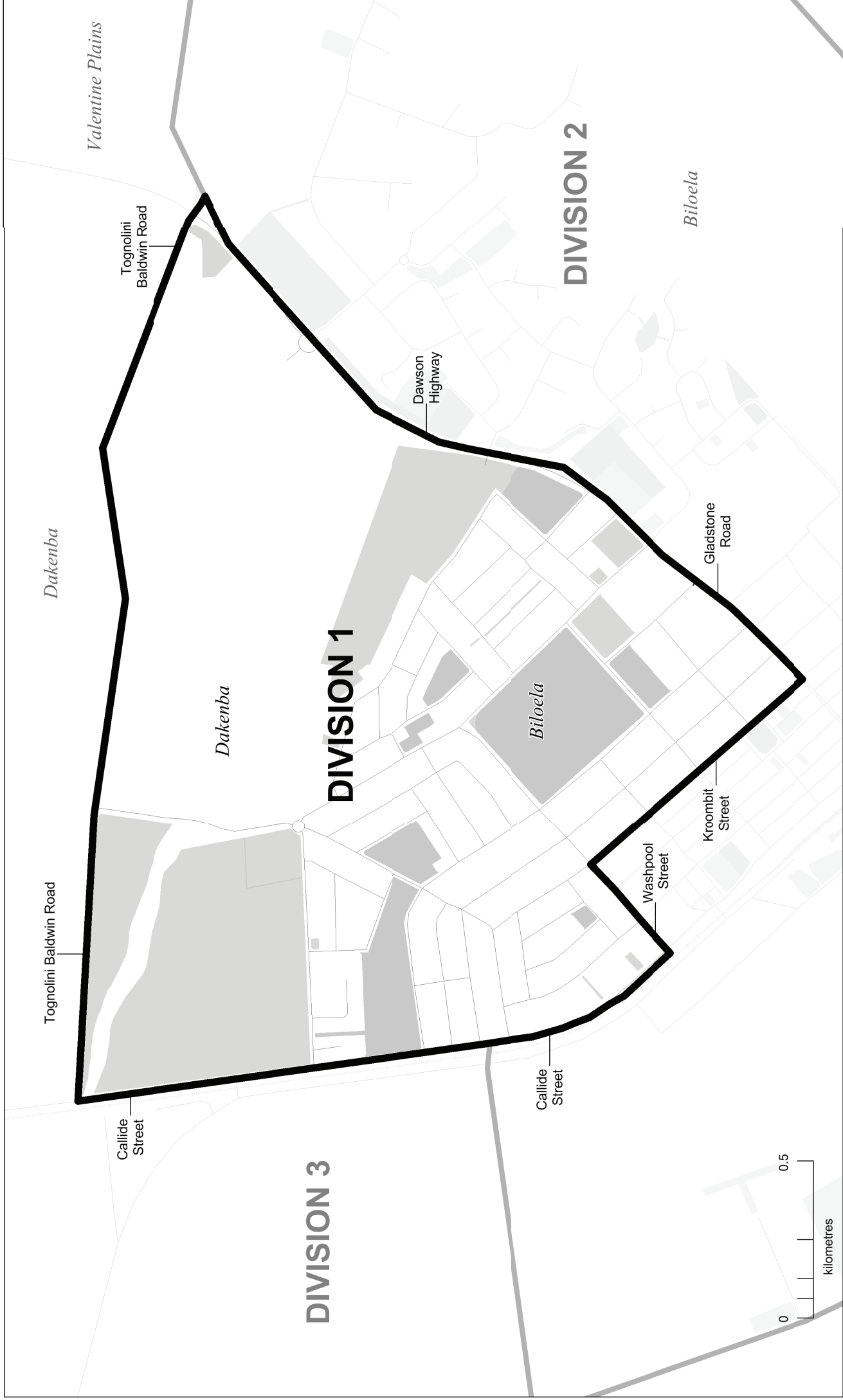
Proposed Division	Actual			Projected - 2016			Projected - 2019		
	Enrolment (23 February 2015)	Quota Variation (%)	Quota Status	Enrolment (31 March 2016)	Quota Variation (%)	Quota Status	Enrolment (28 February 2019)	Quota Variation (%)	Quota Status
DIVISION 1	1,600	3.52	In	1,608	3.61	In	1,630	4.55	In
DIVISION 2	1,739	12.51	In	1,765	13.72	In	1,819	16.68	In
DIVISION 3	1,597	3.32	In	1,598	2.96	In	1,588	1.86	In
DIVISION 4	1,430	-7.48	In	1,424	-8.25	In	1,406	-9.81	In
DIVISION 5	1,307	-15.44	In	1,313	-15.40	In	1,316	-15.59	In
DIVISION 6	1,601	3.58	In	1,604	3.35	In	1,595	2.31	In
Actual Total	9,274		Projected Total	9,312		Projected Total	9,354		
Actual Average	1,546		Projected Average	1,552		Projected Average	1,559		
Actual Lower Limit	1,237		Projected Lower Limit	1,242		Projected Lower Limit	1,247		
Actual Upper Limit	1,855		Projected Upper Limit	1,862		Projected Upper Limit	1,871		

BANANA SHIRE COUNCIL PROPOSED DIVISION BOUNDARIES



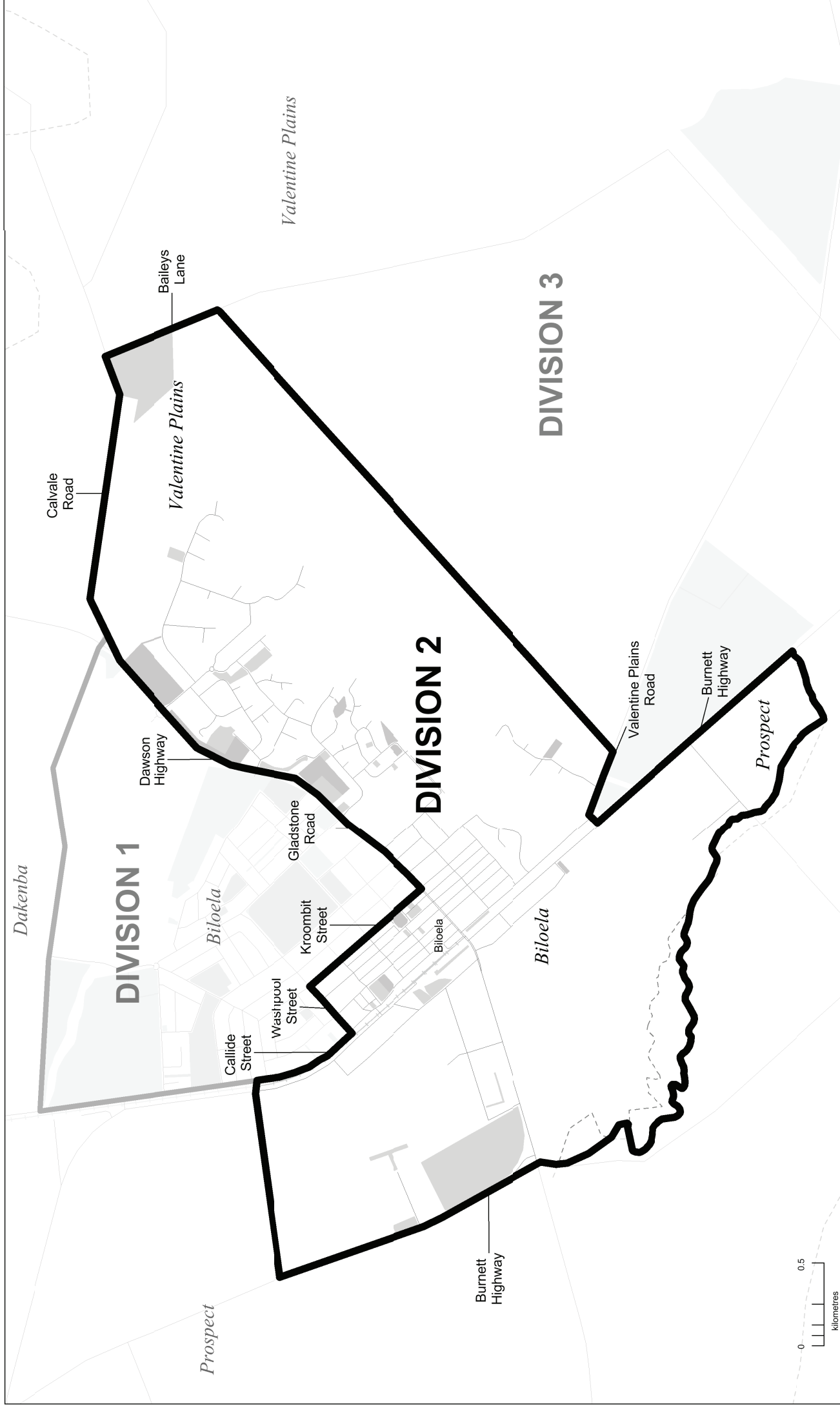
2015 PROPOSED DIVISIONAL BOUNDARIES

DIVISION 1



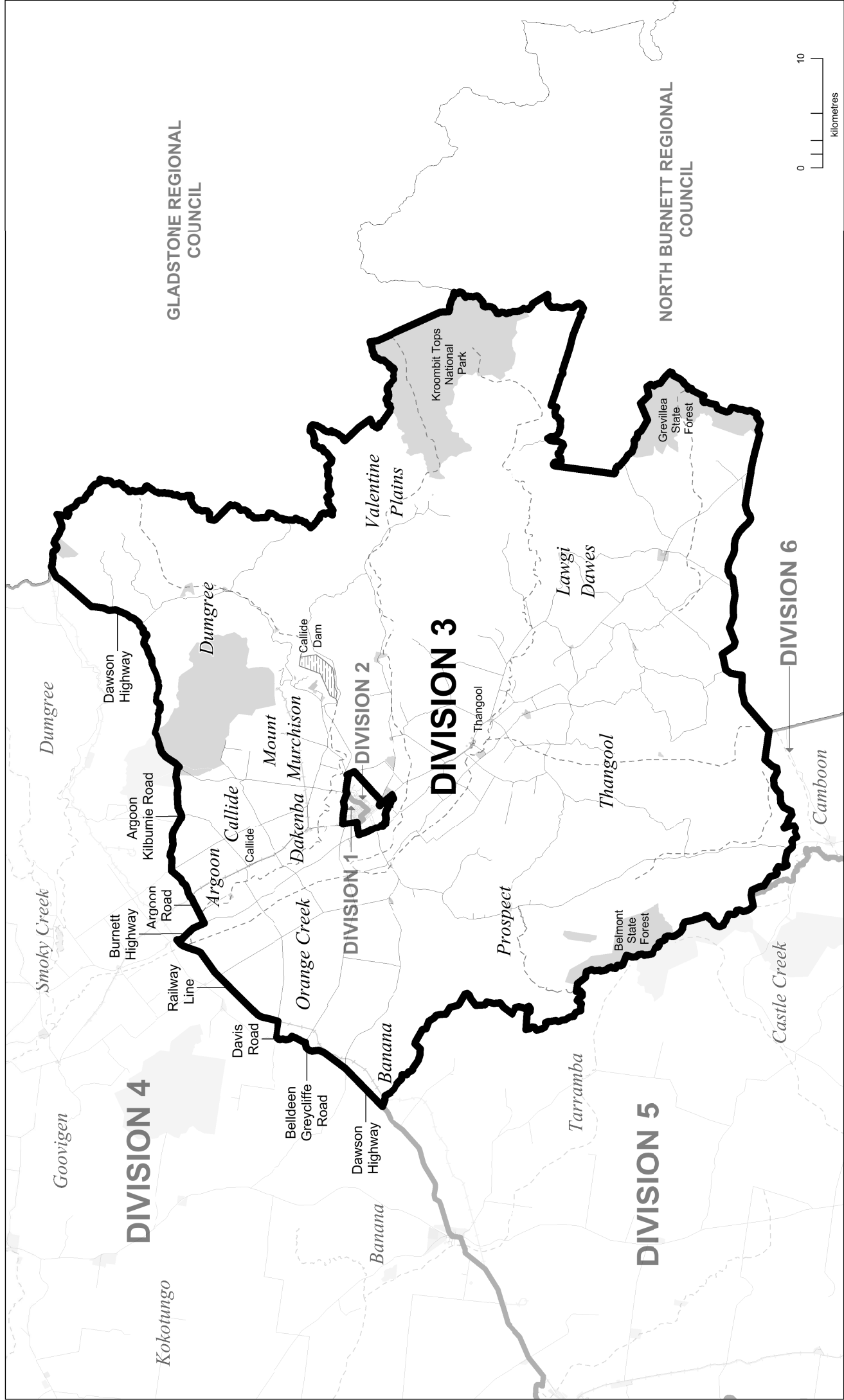
2015 PROPOSED DIVISIONAL BOUNDARIES

DIVISION 2



2015 PROPOSED DIVISIONAL BOUNDARIES

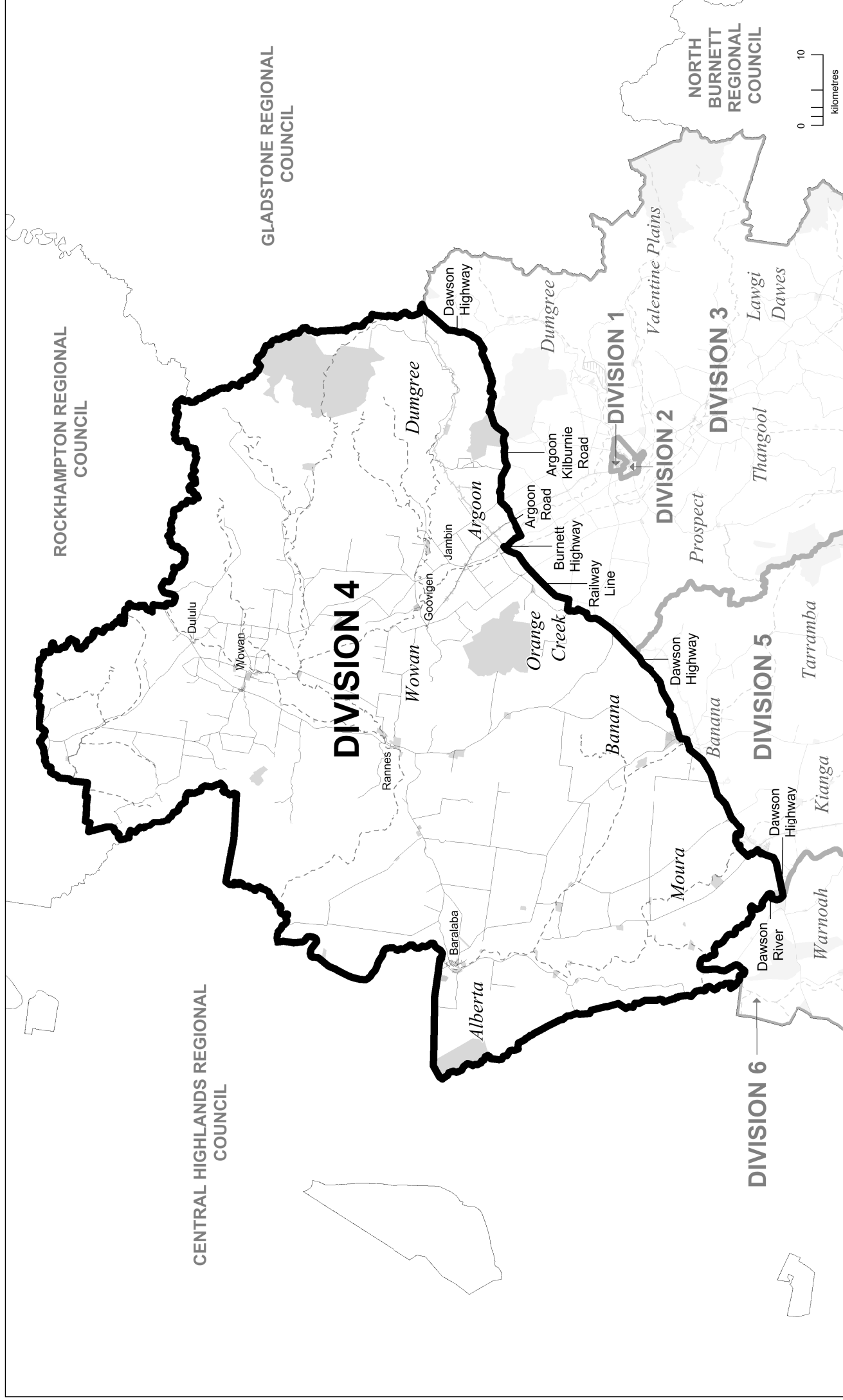
DIVISION 3



- Proposed Division Boundary
- Proposed Adjacent Division Boundary
- Road
- Railway
- Watercourse
- Waterbody
- Park / Reserve

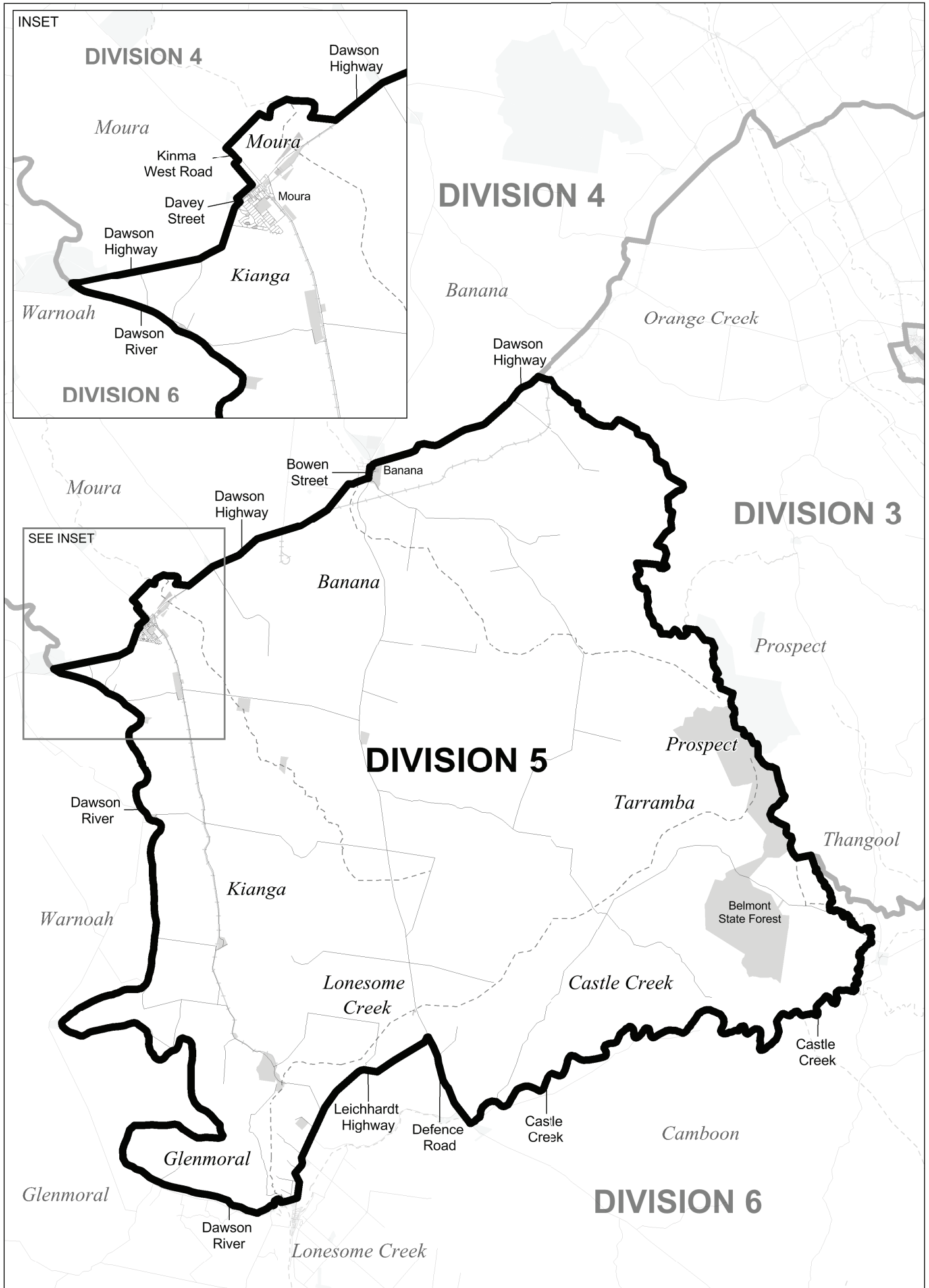
2015 PROPOSED DIVISIONAL BOUNDARIES

DIVISION 4



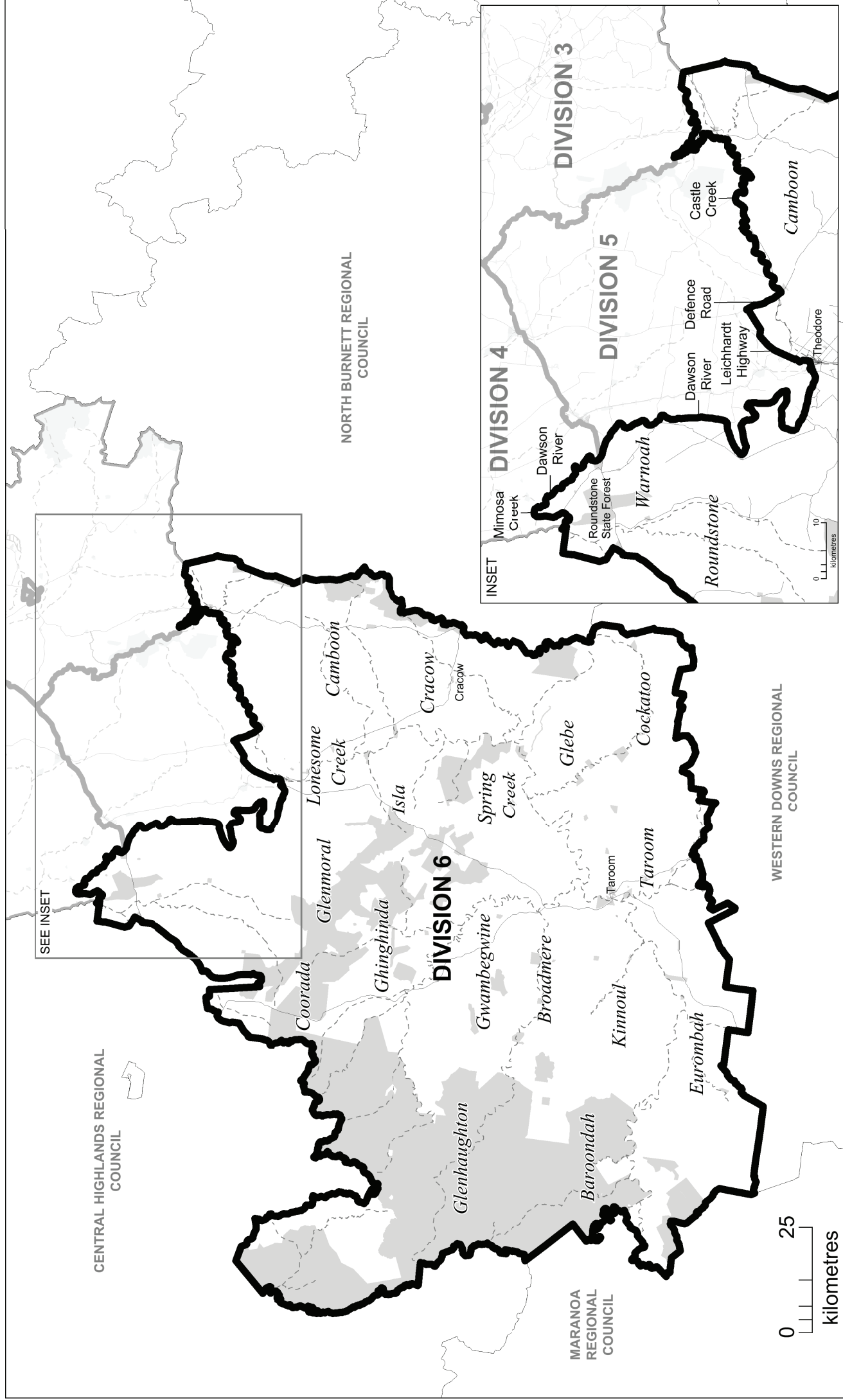
2015 PROPOSED DIVISIONAL BOUNDARIES

DIVISION 5



2015 PROPOSED DIVISIONAL BOUNDARIES

DIVISION 6



APPENDIX E

**Invitation for Objections to the Proposal
Comments to the Proposed Determination**

LOCAL GOVERNMENT CHANGE COMMISSION BANANA SHIRE COUNCIL

INVITATION FOR OBJECTIONS TO THE PROPOSAL

The Banana Shire Council has advised that its electoral divisions no longer meet the quota requirements set down in the *Local Government Act 2009*. The Minister responsible for Local Government has in turn referred the matter to the Local Government Change Commission for independent assessment.

The Commission now invites written objections from interested persons and bodies' relating to the council's proposed electoral divisions, to be lodged **on or before 5.00pm Friday 31 July 2015**.

For this phase of the review, the enrolment for Banana Shire Council as at 23 February 2015 is being used. The total enrolment was 9,724. The Commission has determined that 1,546 is the reasonable proportion of electors for an electoral division. Section 17 of the Act requires the Commission to ensure that the number of enrolled electors in all divisions does not differ from this reasonable proportion by $\pm 20\%$. In order to meet the enrolment criteria set out in the Act the number of electors in each division must be within the minimum of 1,237 and the maximum of 1,855. Furthermore, the Act requires that the reasonable proportion of electors must be worked out as near as practicable to the time when the change is to happen to ensure demographic representation for each division of Banana Shire. Projected data for March 2016 and February 2019 has been used to assist with this requirement.

Further information about the review process, reference material, maps, guidelines and advice on preparing objections to the proposal may be found on the Electoral Commission Queensland (ECQ) website – Under ELECTORAL DISTRICTS then LOCAL GOVERNMENT AREAS then LOCAL GOVERNMENT REVIEWS then click Banana Shire.

Anyone interested in lodging an objection should note that all objections will be published on the Commission's website in their entirety and in a publication.

Objections should be marked BANANA and may be:

- posted to:
Local Government Change Commission, GPO Box 1393, BRISBANE, QLD 4001
- personally delivered to:
Electoral Commission Queensland, Level 6, Forestry House,
160 Mary Street, Brisbane, between the hours of 9.00 am and 5.00 pm
- lodged by email to: bananashirecouncilreview@ecq.qld.gov.au or
- by online form:
Which can be found on the ECQ website (www.ecq.qld.gov.au)
Under ELECTORAL DISTRICTS then LOCAL GOVERNMENT AREAS then LOCAL GOVERNMENT REVIEWS then click Banana Shire and scroll to the bottom of the Proposed Determination Section.

It would assist the Commission if anyone intending to submit objections accompanies them with the electronic mapping data if this has been prepared, preferably in MapInfo and/or KML format in projection GDA94 – Longitude/Latitude (Australia GDA94).

For any assistance related to the review matter please refer to the Commission's website, or contact the Commission on 1300 881 665 for assistance.

Walter van der Merwe

Change Commissioner
Electoral Commission Queensland

Blaze071212

071212
M6x3_188hx129w
Central Telegraph

Your Reference: LG/000550
Our Reference: RG:wn 15/2344 & 4190
Contact: Ray Geraghty (CEO)

Received 28/7/15

23 July 2015

Mr Greg Rowe
Change Commissioner
Electoral Commission Queensland
GPO Box 1393
BRISBANE Q 4001

Dear Greg

Re: Local Government Change Review – Review of Internal Divisional Boundaries

I refer to your recent letter regarding the above and I wish to advise that the proposed changes were discussed by Council at its recent workshop and Council has expressed its support for these proposed changes.

With regards to Division 5, Council wishes to express its support for the realignment of the boundary to include the nine (9) electors from Division 6 in accordance with its submission dated 10 March 2015.

The reasons for this proposal are set out below –

- The revised boundary would reflect the community of interest with Moura/Banana (Division 5 some 10 kilometres and 30 kilometres away) as opposed to Theodore and Taroom (Division 6 some 70 kilometres and 170 kilometres in distance).
- The geographical patterns of human activities and linkages between local communities, is very strongly aligned with Moura (Division 5).
- Elected representation from Division 5 has historically been from the Moura area which is the larger population centre in the division.
- Council and community services for these residents are provided from Moura (Division 5).
- The proposed boundary realignment to use the Dawson Highway as the boundary between Divisions 5 and 6 provides a clear and easily discernable boundary.
- The existing boundary is more of a historical anomaly as opposed to a sensible and practical boundary.

Should you require any further information, please do not hesitate to contact me.

Yours sincerely

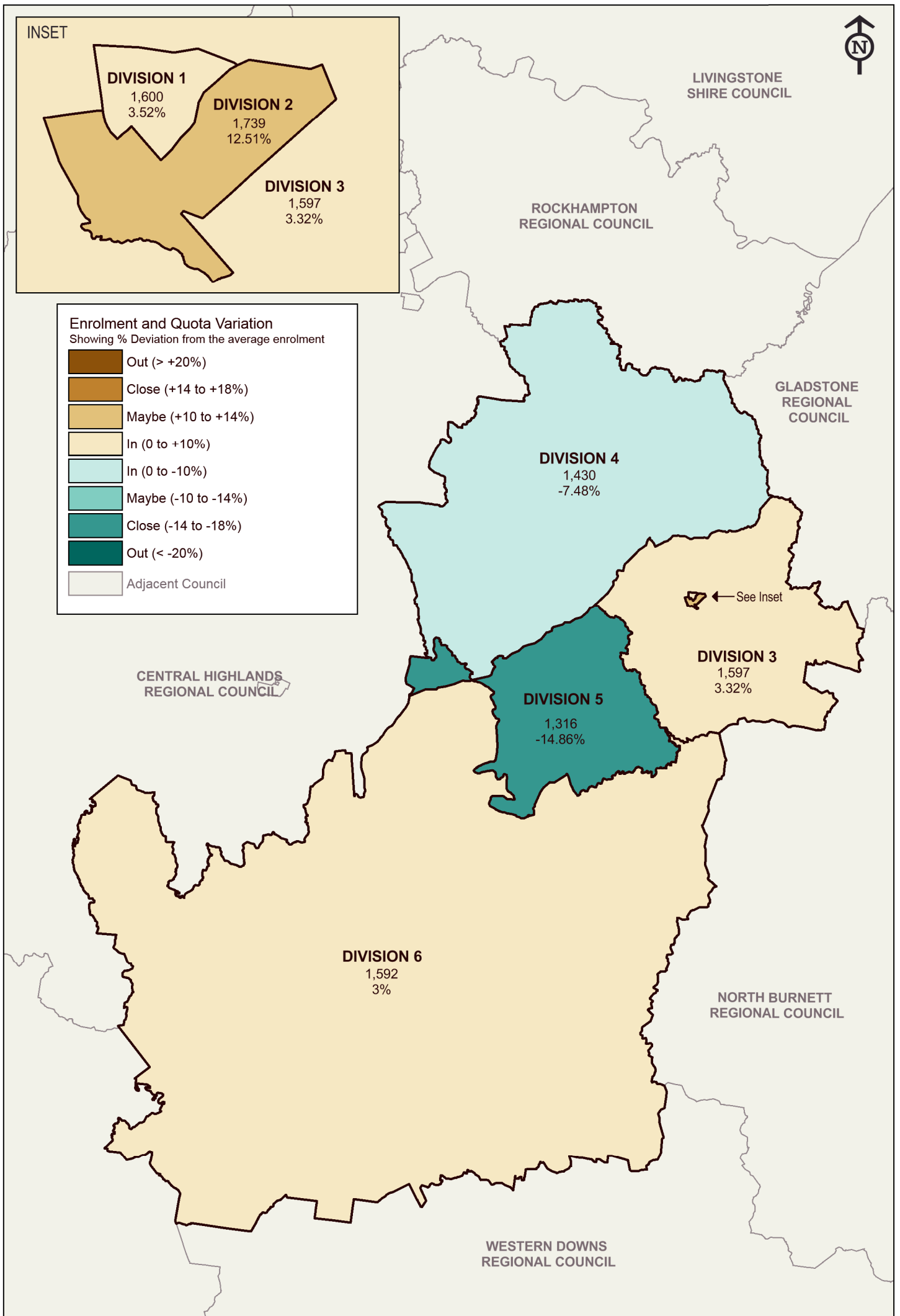


Ray Geraghty
CHIEF EXECUTIVE OFFICER

APPENDIX F

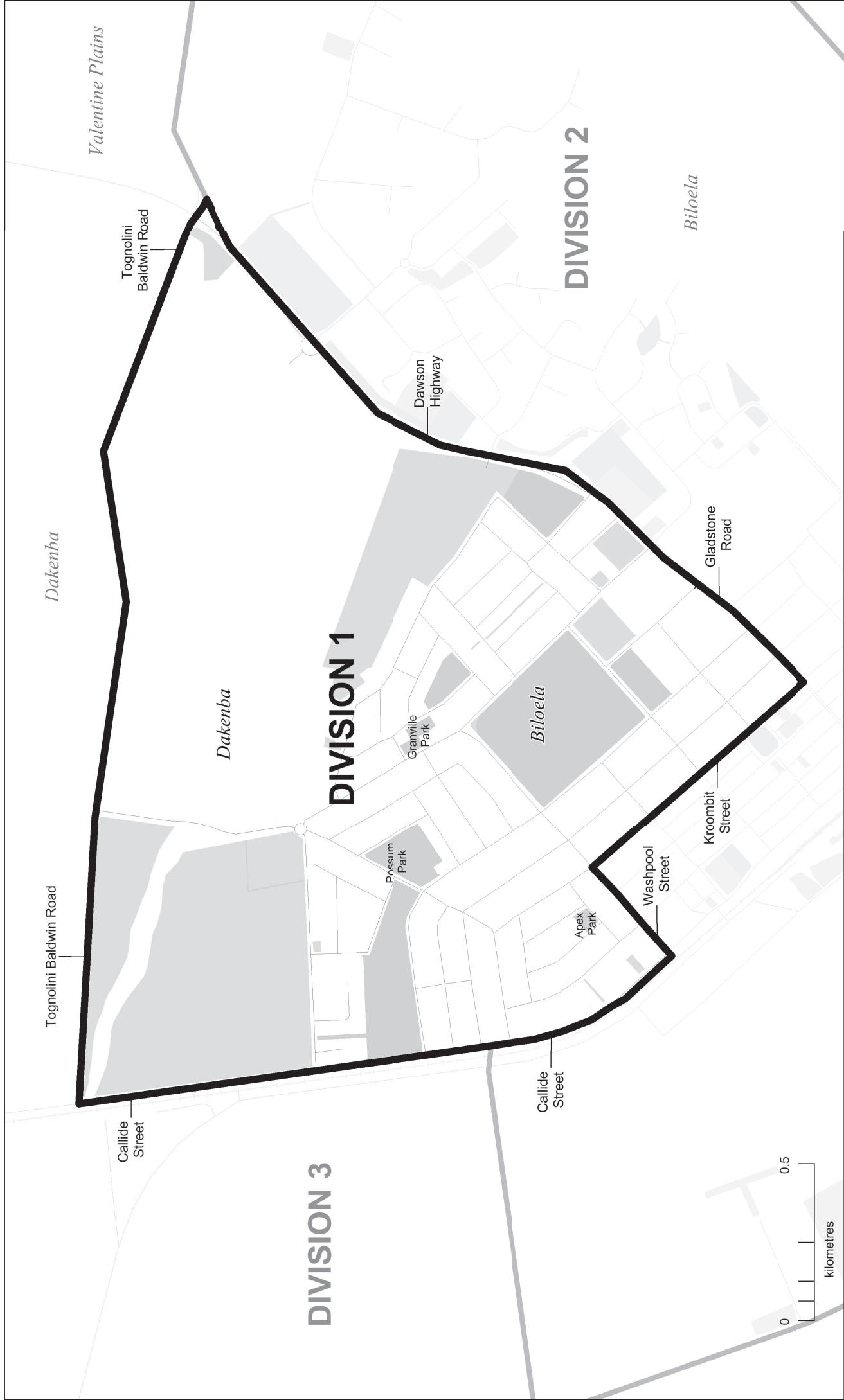
**Maps of Council's Electoral
Divisions for 2016 Elections**

BANANA SHIRE COUNCIL FINAL DIVISION BOUNDARIES



2015 FINAL DIVISIONAL BOUNDARIES

DIVISION 1



Final Division Boundary
Final Adjacent Division Boundary

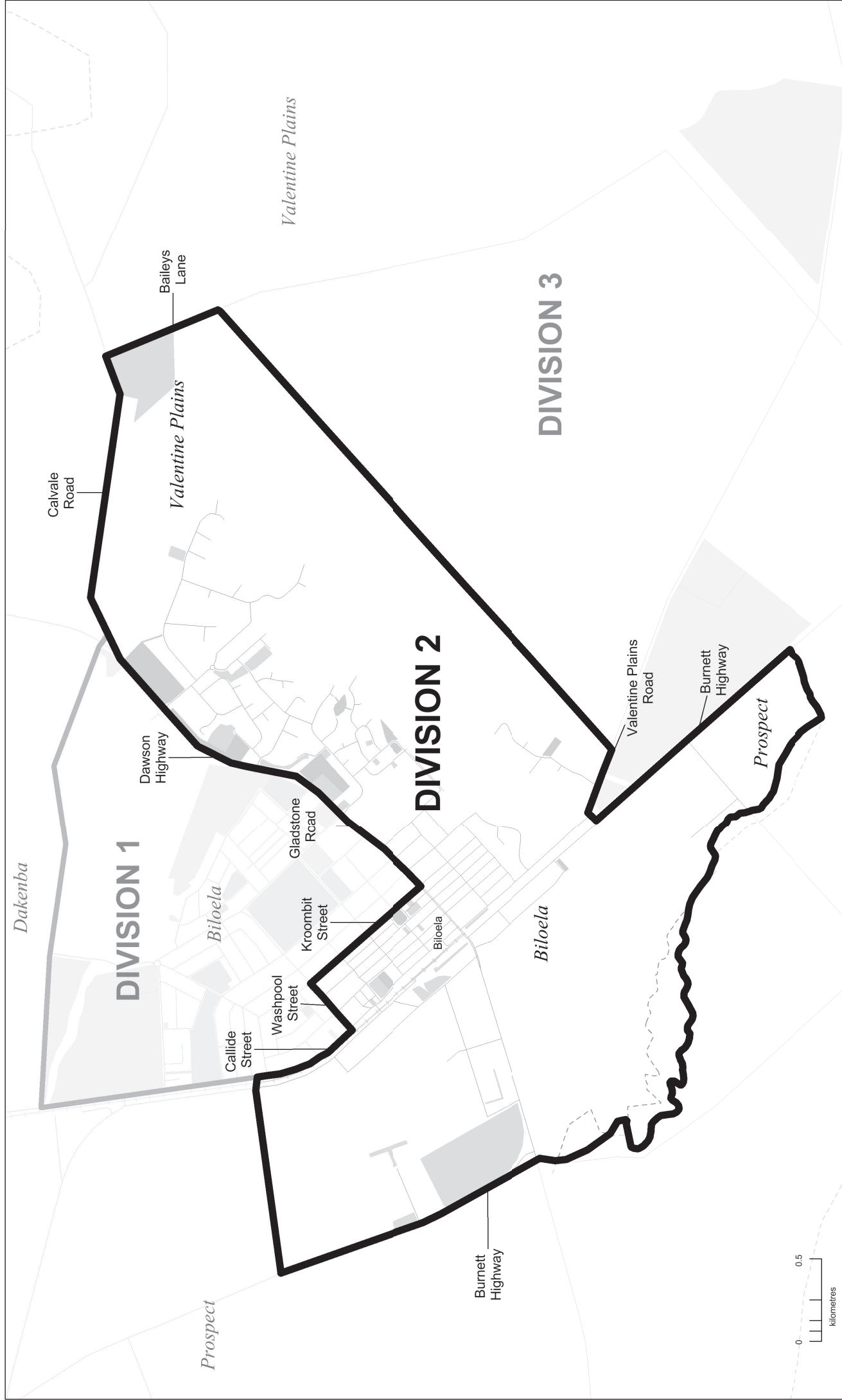
Road
Railway

Watercourse
Waterbody

Park / Reserve

2015 FINAL DIVISIONAL BOUNDARIES

DIVISION 2



Final Division Boundary
Final Adjacent Division Boundary

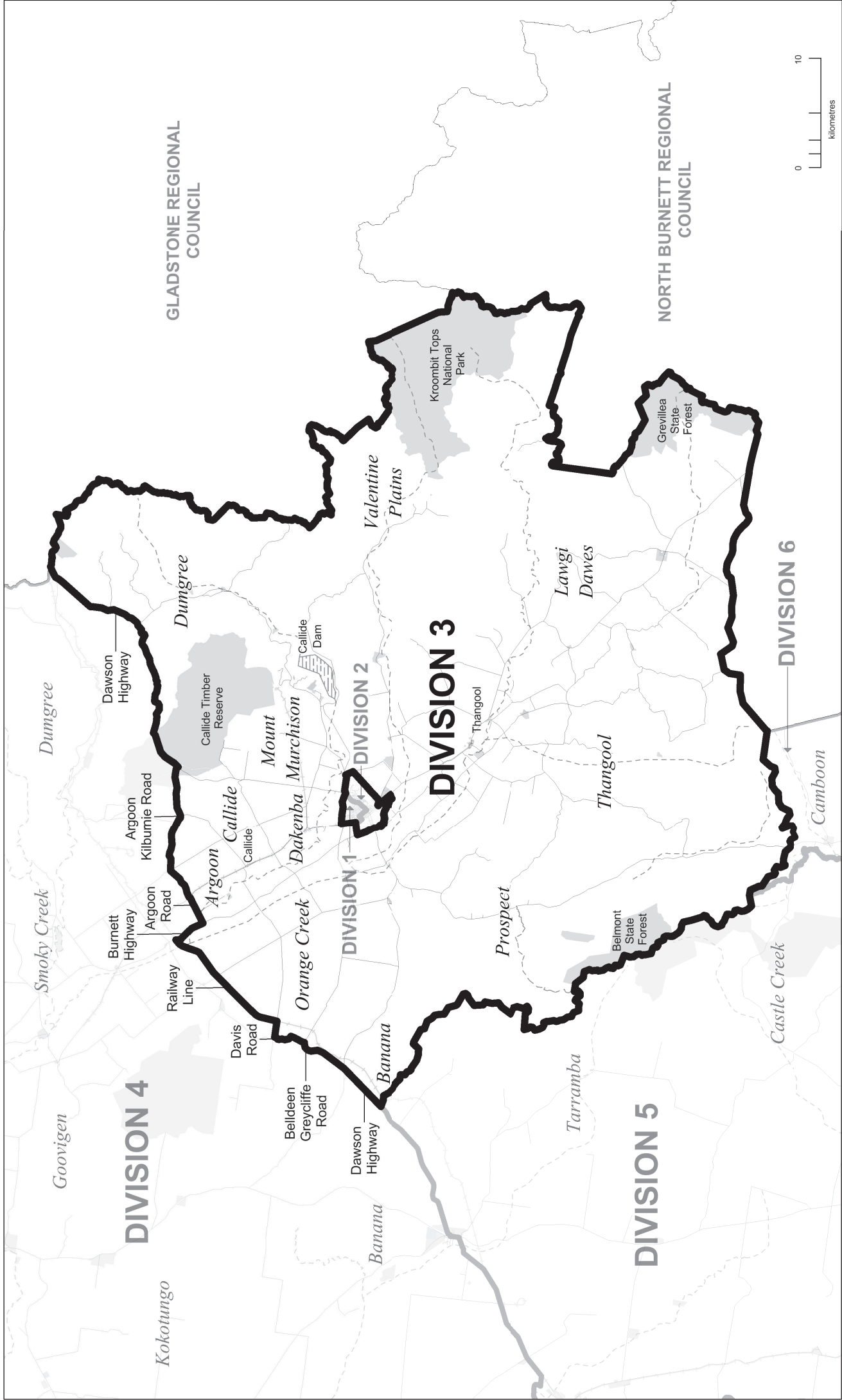
Road
Railway

Watercourse
Waterbody

Park / Reserve



DIVISION 3



DIVISION 4



Final Division Boundary
Final Adjacent Division Boundary

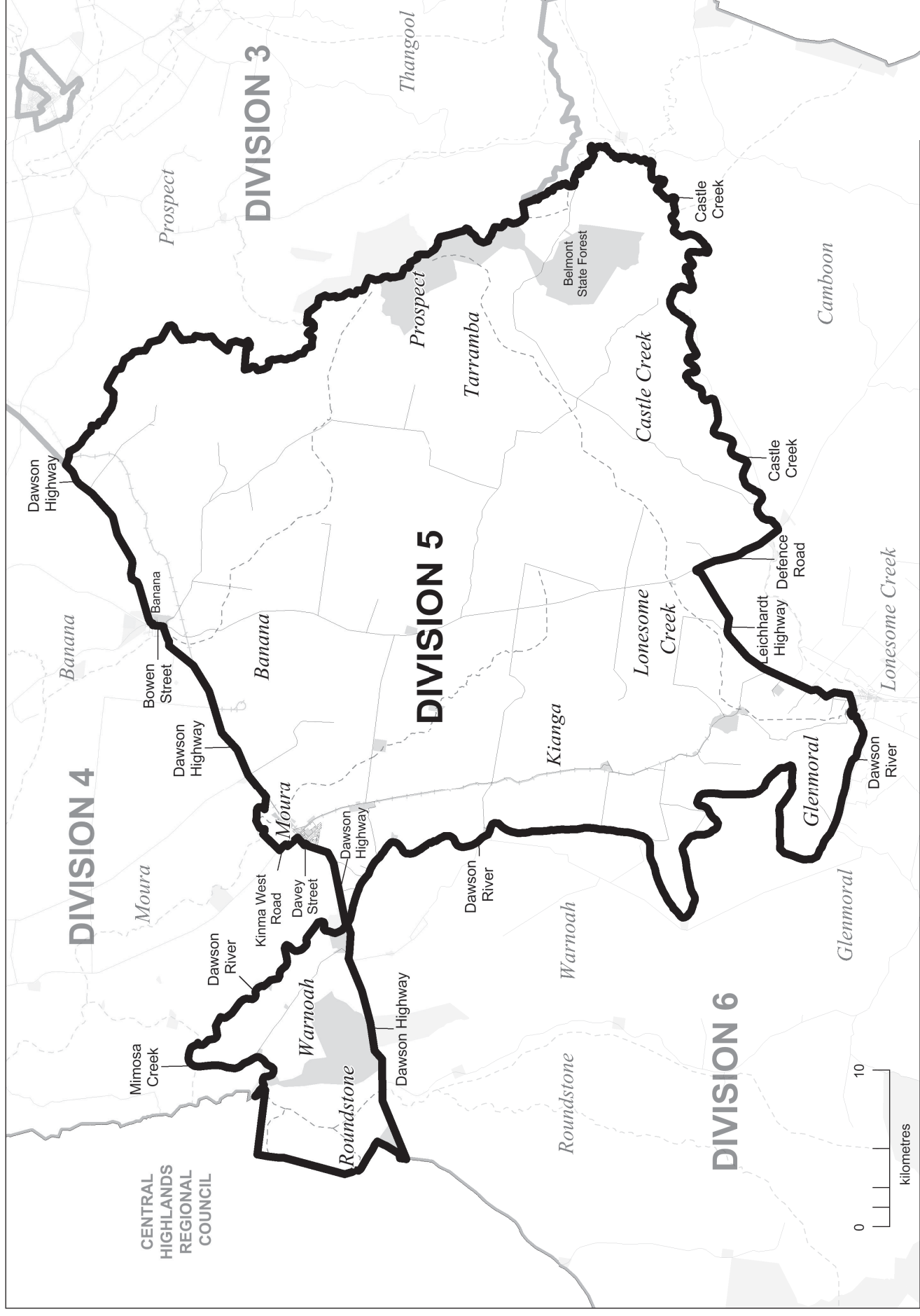
Road
Railway

Watercourse
Waterbody

Park / Reserve



DIVISION 5



DIVISION 6

