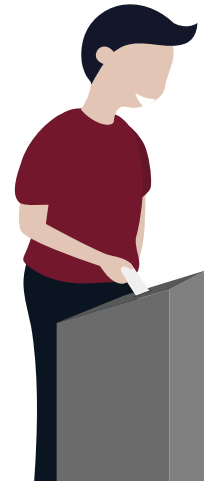


Voting options

Have your say

at Queensland elections

fact sheet



Is voting compulsory?

Yes, voting is compulsory. Voting is an opportunity to have your say and help shape Queensland. You must enrol and vote if you are aged 18 or over. If you do not vote, you may receive a fine. Voting at elections is both a right and a responsibility.

Make sure you're correctly enrolled

Enrolling to vote or updating your details is easy.

Go to aec.gov.au and follow the links.

Or you can fill out a paper form. You'll find these in the "Enrol to vote" section at ecq.qld.gov.au.

Failure to vote

The Electoral Commission of Queensland (ECQ) may send you an 'apparent failure to vote' notice if you appear not to have voted. If you receive this notice, you can:

- provide a valid reason for not voting
- tell us that you *did* vote and provide details
- pay a fine which equates to 1 penalty unit at the time of the offence (\$133.45 as of 1 July 2019).

If you don't respond to this notice, it will be referred to the State Penalties Enforcement Registry (SPER) for further action.

Special enrolment categories

There are enrolment categories available to electors with specific needs or circumstances.

If you believe you meet the criteria for one of these categories you will need to complete the applicable enrolment form - ecq.qld.gov.au/enrol-to-vote/enrol-or-update-your-enrolment.

No fixed address

If you do not have a fixed, permanent address you're still eligible to enrol and vote. To register under the no fixed address category you must be an Australian citizen, aged 18 years or older and be:

- living somewhere temporarily without a permanent home to return to; or
- experiencing homelessness, living in crisis or transitional accommodation.

This category is not available for people travelling (overseas, interstate, or for work) who have a permanent home to return to.

Silent elector

You can register as a silent elector if you feel that having your address shown on the electoral roll could endanger you or your family. Approval to register and vote as a silent elector is granted at the discretion of the Australian Electoral Commission. Go to aec.gov.au for more information.

Voting options – Have your say

Special postal voter

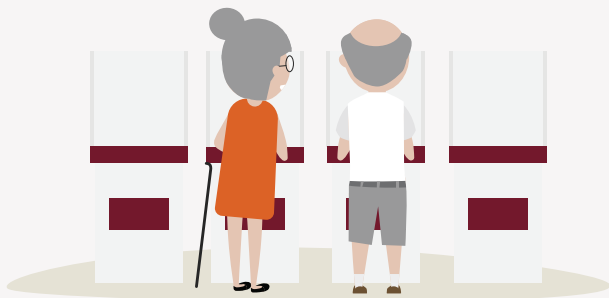
Registering as a special postal voter means that you'll receive ballot papers by post for each election applicable to you. To register as a special postal voter you must meet one of the following criteria:

- reside at an address more than 20km from a polling booth
- be unable to attend a polling booth due to religious beliefs
- be unable to sign due to a physical incapacity.

For more information contact the Australian Electoral Commission on 13 23 26 or online at aec.gov.au.

How to cast your vote

Voting is compulsory at all three levels of government: federal, state and local government. There are many ways you can vote, even if you can't go to a polling booth on election day.



Early voting (pre-poll)

Everyone is welcome to vote early.

When an election is being held, early voting locations will be listed on the ECQ's website at ecq.qld.gov.au.

Postal voting

Anyone can apply for a postal vote and have their voting materials mailed to them. If you're registered as a special postal voter or silent elector your voting materials will be mailed to you automatically.



Attend a polling place on election day

Many people vote at a polling booth on election day. Voting locations will be listed on the ECQ's website once an election has been called.

Telephone voting

A dedicated telephone voting system is available to eligible electors who cannot attend a polling booth or vote without assistance. To find out if you are eligible and to register for this service, contact ECQ on 1300 881 665.

Read more in the **telephone voting fact sheet**.