

# Review of Divisional Boundaries

---

**2019 FINAL DETERMINATION**  
CASSOWARY COAST REGIONAL COUNCIL

# Contents

<b>INTRODUCTION .....</b>	<b>2</b>
Background .....	2
Table 1 – Current and Projected Enrolment Quota .....	2
Determining the quota .....	3
<b>THE REVIEW PROCESS .....</b>	<b>3</b>
Existing Divisions .....	4
Table 2 – Summary of Enrolment for the Existing Divisions .....	4
Public Suggestions .....	4
Proposed Determination .....	5
Comments on the Proposal .....	5
<b>FINAL DETERMINATION .....</b>	<b>5</b>
Table 3 – Summary of Enrolment for the Final Divisions .....	5
<b>RECOMMENDATION .....</b>	<b>6</b>
<b>APPENDIX A</b>	Maps of Council's Electoral Divisions for 2020 Elections
<b>APPENDIX B</b>	Minister's Referral
<b>APPENDIX C</b>	Suggestions Notice & Public Submissions
<b>APPENDIX D</b>	Comments on the Proposal Notice & Public Submissions

## INTRODUCTION

The Local Government Change Commission (Change Commission) is an independent body established under the *Local Government Act 2009 (Qld)* (the Act). The Change Commission is responsible for periodically reviewing the internal boundaries of divided councils so that each division has relatively the same number of enrolled voters. This upholds the key democratic principle of 'one vote, one value', by ensuring each person's vote carries the same weight.

The Change Commission has finalised its assessment of the Cassowary Coast Regional Council's divisions. This report outlines the recommended divisional boundaries and sets out the reasons for the Change Commission's decisions. Maps of the final boundaries are attached at Appendix A.

The Change Commission for this review consists of:

- Mr Pat Vidgen, Electoral Commissioner;
- Ms Jennifer Lang, Casual Commissioner; and
- Mr Wade Lewis, Casual Commissioner.

The casual commissioners were appointed by the Governor in Council on 1 November 2018.

## Background

On 26 March 2019, the Minister for Local Government, Minister for Racing and Minister for Multicultural Affairs, The Honourable Stirling Hinchliffe MP referred a divisional boundary review of the Cassowary Coast Regional Council (see Appendix B).

In conducting its assessment, the Change Commission was legally required to ensure each division of the Council has a reasonable proportion of enrolled voters, herein referred to as 'quota'. Community interests, public submissions and easy-to-identify boundaries were also considered.

Table 1 shows the Council's enrolment quota as at 31 January 2019 and the projected quota for 31 March 2024.

Table 1 – Current and Projected Enrolment Quota		
	31 January 2019	31 March 2024
<b>Number of divisions</b>	6	6
<b>Enrolment</b>	19,155	19,618
<b>Average enrolment per division</b>	3,193	3,270
<b>Average enrolment (+10%) per division</b>	3,512	3,597
<b>Average enrolment (-10%) per division</b>	2,873	2,943

**Determining the quota**

A quota is determined by dividing the total number of enrolled voters by the number of councillors (other than the mayor), plus or minus 10%. The Change Commission also considers projected enrolment, so the divisions remain in quota for as long as possible.

Current enrolment data has been sourced from Queensland's electoral roll and projected enrolment data from the Queensland Government Statistician's Office of Queensland Treasury. Projections are based on the timing of future local government quadrennial elections.

Enrolment information is based on 'Statistical Areas Level 1 (SA1)'. SA1s are geographical units used by the Australian Bureau of Statistics (ABS) for the release of census data. According to the ABS most SA1s have a population of between 200 to 800 persons with an average population of approximately 400 people.

Current and projected enrolment data are available for download on the Cassowary Coast Regional local government review webpage on the Electoral Commission of Queensland's (ECQ) website.

**THE REVIEW PROCESS**

The Change Commission may conduct its assessments in any way it deems appropriate, unless the Minister has provided specific directions.

The process for this review was:

1. Inviting suggestions
2. Publication of the Change Commission's proposal
3. Inviting comments on the proposal
4. Publication of the Change Commission's final determination report
5. Final determination report provided to the Minister for Local Government, for implementation by the Governor in Council
6. New boundaries come into effect at the 2020 Local Government Quadrennial Election

## Existing Divisions

The Cassowary Coast Regional Council has 19,155 voters and is divided into six single-member electoral divisions plus a mayor.

Table 2 shows the current and projected enrolment for the Council's existing divisional boundaries. As at 31 January 2019, Division 3 was out of quota and it is projected to be further out of quota by 2024.

<b>Table 2 – Summary of Enrolment for the Existing Divisions</b>				
<b>Division</b>	<b>Enrolment as at 31/01/2019</b>	<b>(%) Deviation from Average Enrolment</b>	<b>Projected Enrolment as at 31/03/2024</b>	<b>(%) Deviation from Average Enrolment</b>
Division 1	3,234	1.3	3,330	1.85
Division 2	3,016	-5.53	3,086	-5.62
Division 3	3,731	<b>16.87</b>	3,893	<b>19.06</b>
Division 4	3,087	-3.3	3,125	-4.42
Division 5	3,124	-2.15	3,179	-2.77
Division 6	2,963	-7.19	3,005	-8.09

## Public Suggestions

The Change Commission sought public suggestions to assist in developing its proposal. Advertisements were placed in The Courier-Mail, the Innisfail Advocate and on the ECQ's website and social media.

Suggestions were invited from 27 April 2019 to 5pm 13 May 2019. Eight submissions were received and are available to view at Appendix C.

A key theme identified in most of the submissions was the importance of uniting the Mission Beach (postcode 4852) area and particularly the suburb of Carmoo within Division 3. The Change Commission agreed with the suggestions and proposed boundaries with these communities in mind. To reduce enrolment in Division 3 and allow for the beach community to be united, the proposal also adopted suggestions to transfer El Arish and the surrounding suburbs out of Division 3.

One submission raised issues that fell outside the scope of this review. The Change Commission cannot consider changing the Council to an undivided electoral arrangement (no divisions), unless a change proposal is referred by the Minister.

## Proposed Determination

The Change Commission published its proposal on 21 June 2019 and the following day public comments were invited. Advertisements were placed in The Courier-Mail, the Innisfail Advocate and on the ECQ's website and social media.

The Change Commission's proposal considered both current and projected enrolment data as well as the views expressed in the public submissions. A concerted effort was made to follow suburb boundaries, so that entire localities were united within individual divisions.

## Comments on the Proposal

Comments on the proposal were invited from 22 June 2019 to 5pm on 8 July 2019. One comment was received and can be viewed at Appendix D.

The comment expressed support for the proposal's placement of Carmoo in Division 3 and requested all residents in the 4852 postcode be united within the same division. The submitter also asked that the Kurrimine Beach and Mission Beach areas be placed in separate divisions. The Change Commission considered this submission and noted the postcode 4852 area is entirely contained within Division 3 as requested. Regarding the request to remove Kurrimine Beach, the Change Commission modelled this suggestion but found it would have required additional boundary realignments to balance enrolment and would have impacted other divisional boundaries as a result. Therefore, the proposed boundaries have been retained.

## FINAL DETERMINATION

After assessing the material submitted and having considered the requirements of the Act, it is recommended that the proposed boundaries become the final divisions for the Cassowary Coast Regional Council.

It is noted that the implementation of this recommendation is expected to result in the following divisional enrolment:

Table 3 – Summary of Enrolment for the Final Divisions				
Division	Enrolment as at 31/01/2019	(%) Deviation from Average Enrolment	Projected Enrolment as at 31/03/2024	(%) Deviation from Average Enrolment
Division 1	3,103	-2.8	3,178	-2.8
Division 2	3,316	3.87	3,390	3.68
Division 3	3,278	2.68	3,455	5.67
Division 4	3,087	-3.3	3,125	-4.42
Division 5	3,124	-2.15	3,179	-2.77
Division 6	3,247	1.71	3,291	0.65

## RECOMMENDATION

The Change Commission has provided its assessment to the Minister for Local Government and recommends the Governor in Council implement its final boundaries.

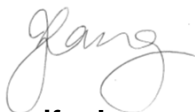
The Change Commission's final recommendation is as follows:

- for the purpose of the 2020 Local Government Quadrennial Election, the Cassowary Coast Regional Council be redivided into six divisions as shown in the maps contained in Appendix A.

In accordance with the Act, the Change Commission has published a notice of results in the Government Gazette, a newspaper circulating in the local government area and on the ECQ website.



**Pat Vidgen PSM**  
**Electoral Commissioner**



**Jennifer Lang**  
**Casual Commissioner**



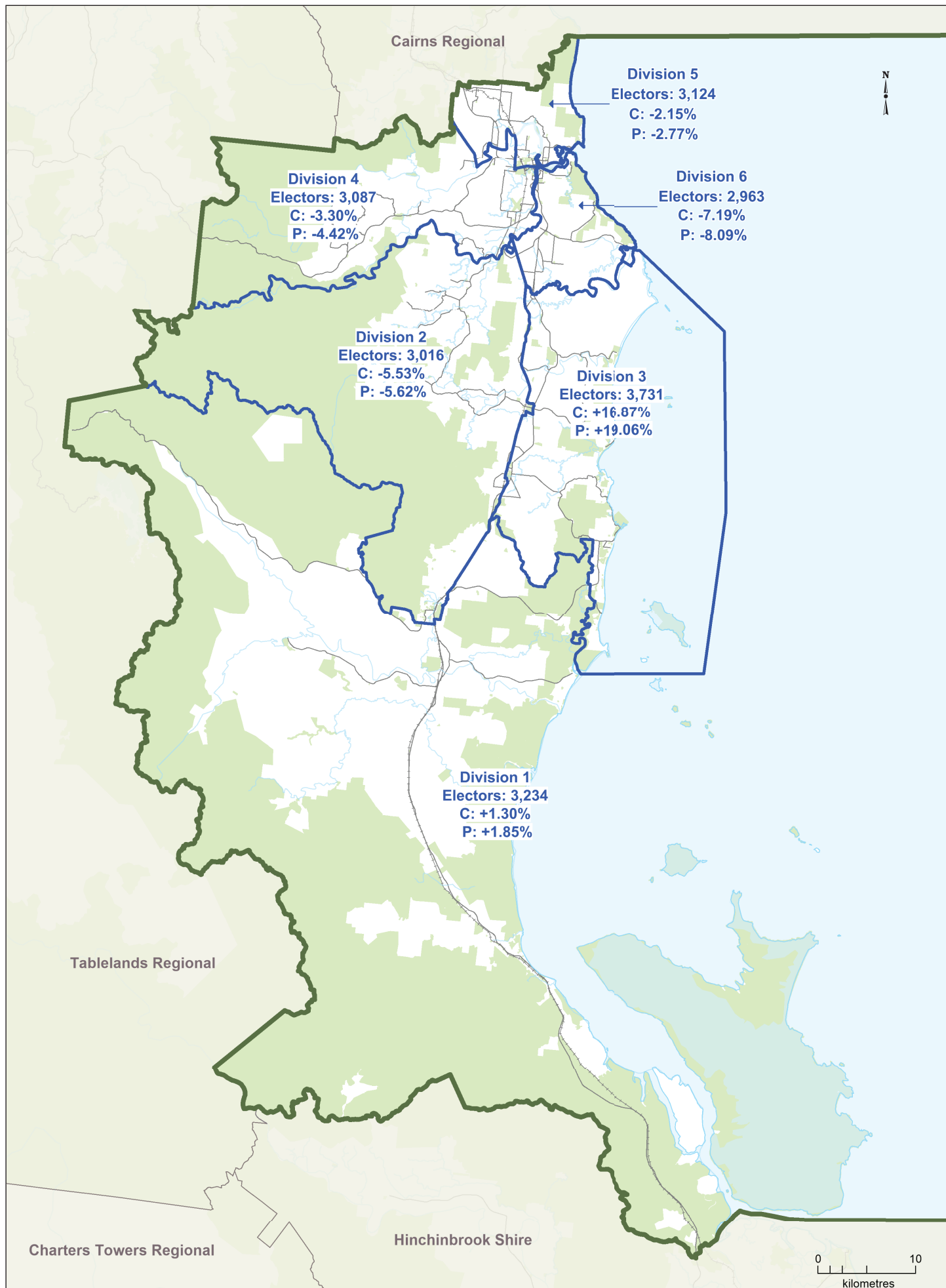
**Wade Lewis**  
**Casual Commissioner**

# **APPENDIX A**

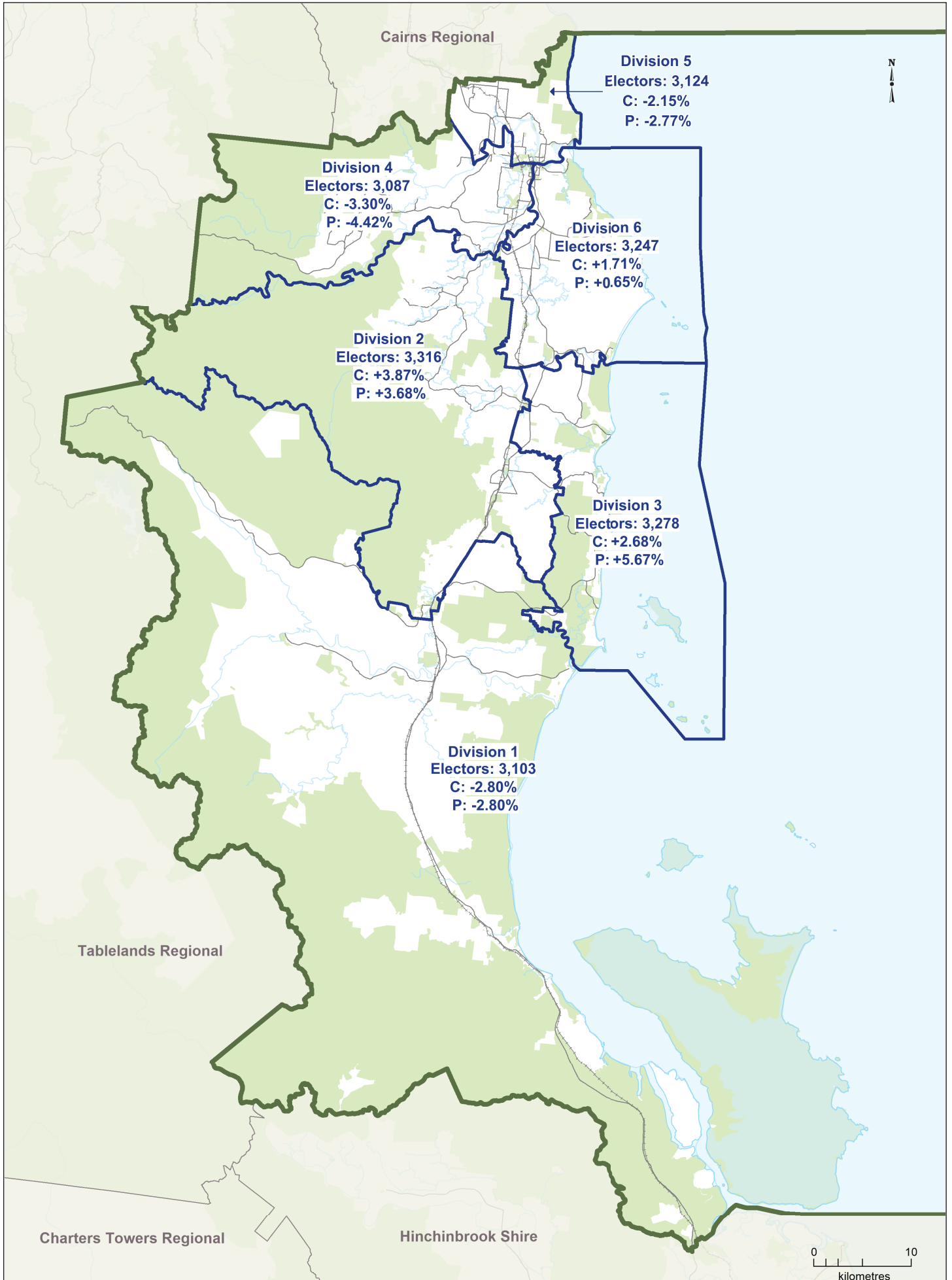
## **Maps of Council's Electoral Divisions for 2020 Elections**

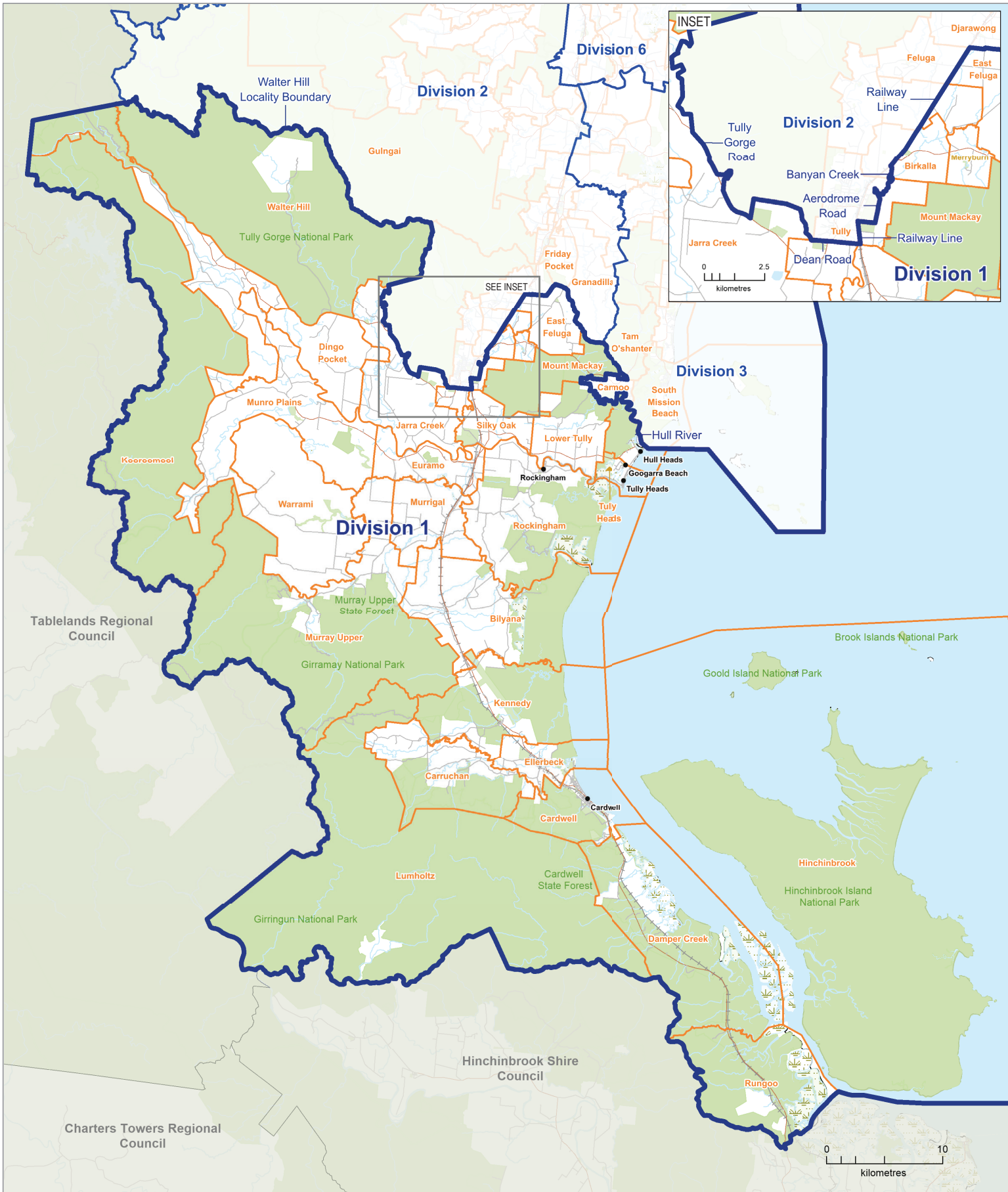


# CASSOWARY COAST REGIONAL Existing Electoral Divisions



# CASSOWARY COAST REGIONAL Final Electoral Divisions





**2019**  
**Local Government Area**  
**Divisional Boundary Review**

**FINAL DIVISIONAL BOUNDARIES**  
**CASSOWARY COAST REGIONAL**  
**DIVISION 1**



Location Map  
 DIVISION 1



**LEGEND**

	Final Division Boundary		Reserve, Parkland
	Final Adjacent Division		Waterbody
	Locality Boundary		Railway
	Adjacent Council		Main Road
			Wetland

This product was created using datasets from various authoritative sources, and is intended as a guide only to display final divisional boundaries.

The digital GIS data is available FREE to download from Queensland Spatial Catalogue, or Qspatial, at <http://qldspatial.information.qld.gov.au>









© The State of Queensland - 2019 (Department of Natural Resources, Mines and Energy)  
 © Electoral Commission of Queensland 2019 Creative Commons (CC BY)



## FINAL DIVISIONAL BOUNDARIES

**CASSOWARY COAST REGIONAL**  
**Division 2**

## LEGEND

- |   |                                    |
|---|------------------------------------|
|  | Final Division Boundary            |
|  | Final Adjacent Division            |
|  | Locality Boundary                  |
|  | Adjacent Council Reserve, Parkland |
|  | Waterbody                          |
|  | Railway                            |
|  | Main Road                          |
|  | Wetland                            |

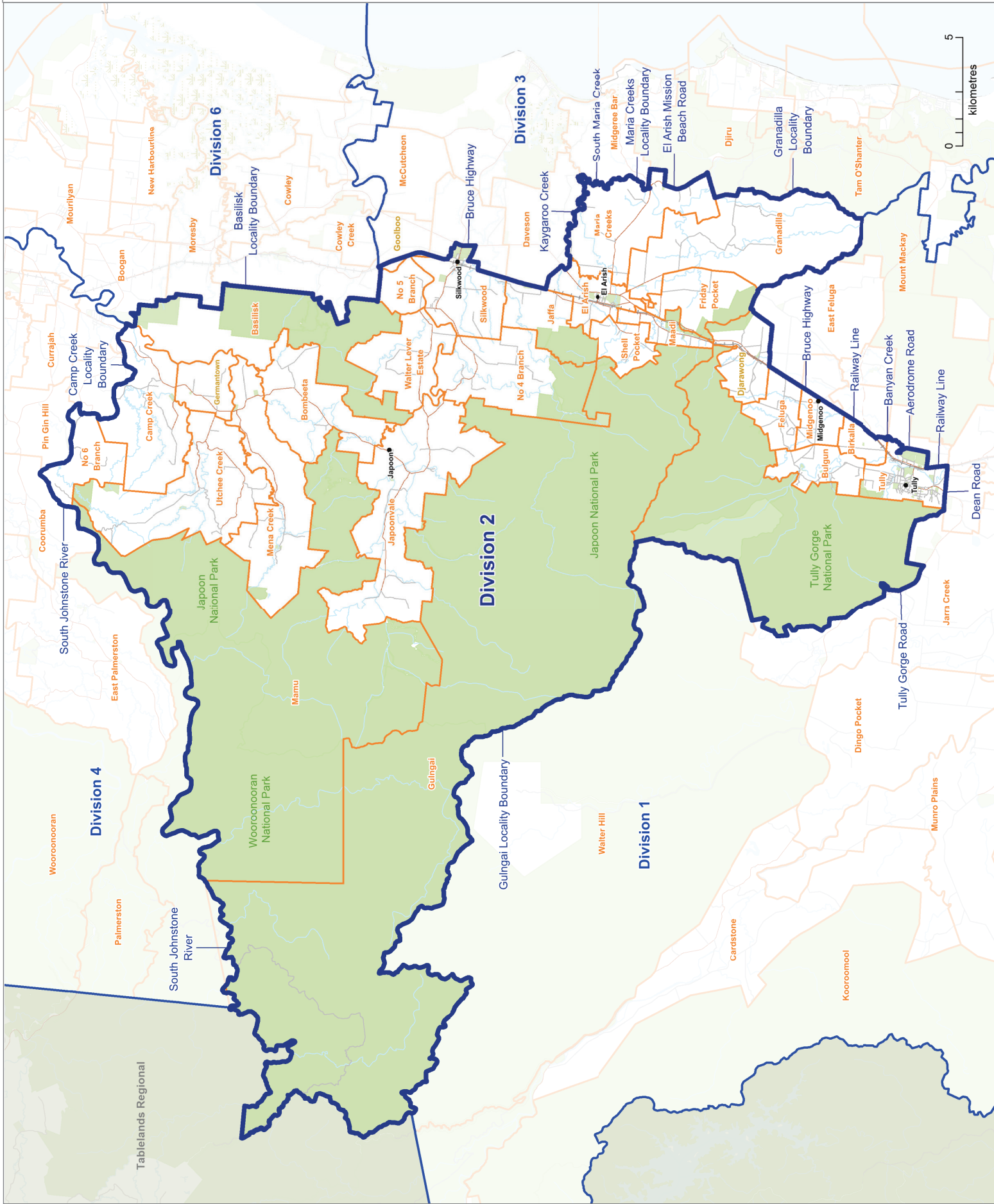
## Location Map Division 2

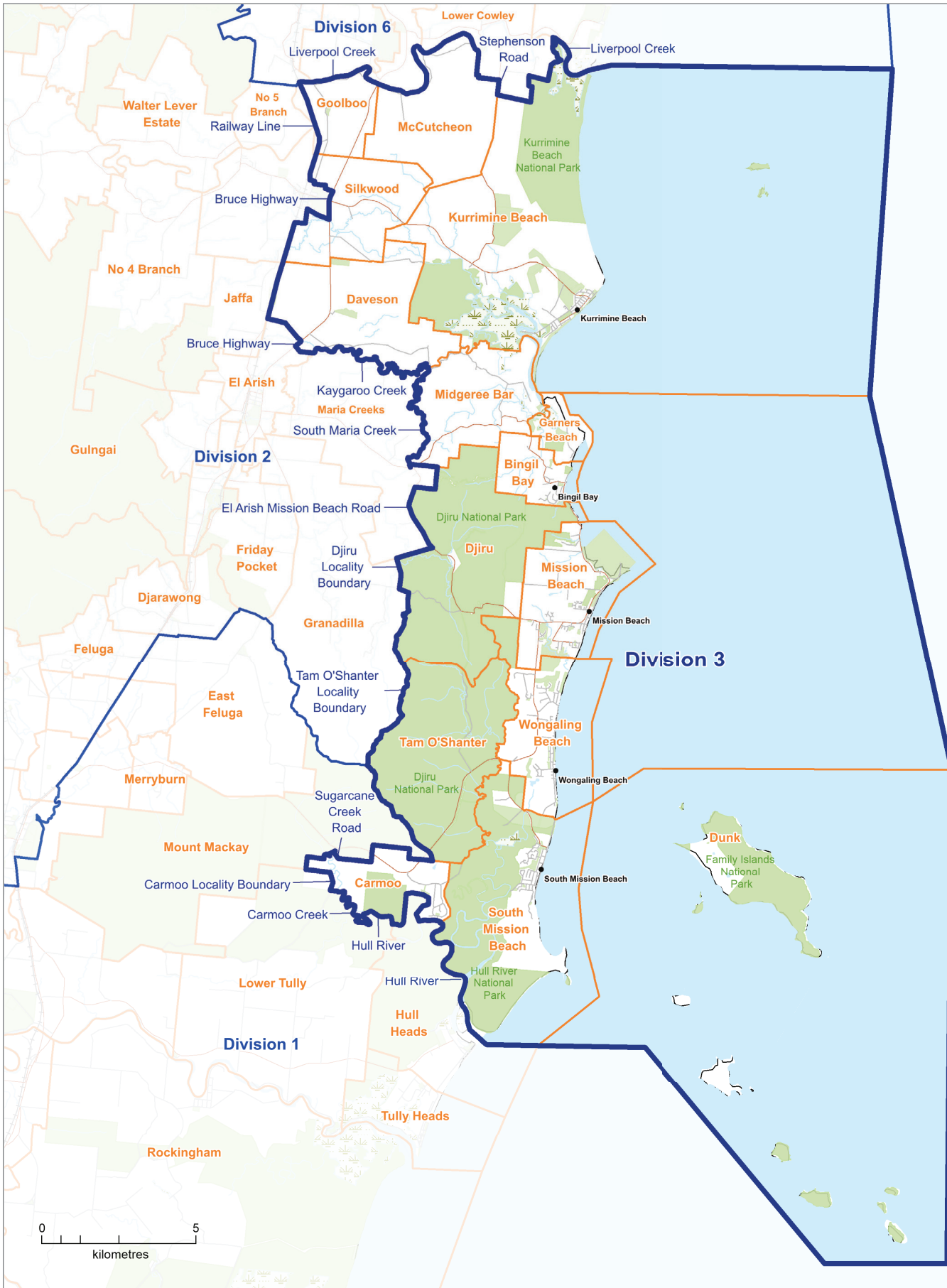


This product was created using datasets from various authoritative sources, and is intended as a guide only to display final divisional boundaries.

The digital GIS data is available FREE to download from Queensland Spatial Catalogue, or Qspatial, at <http://qldspatialinformation.qld.gov.au>

© The State of Queensland - 2019 (Department of Natural Resources, Mines and Energy)  
© Electoral Commission of Queensland 2019  
Creative Commons (CC BY)

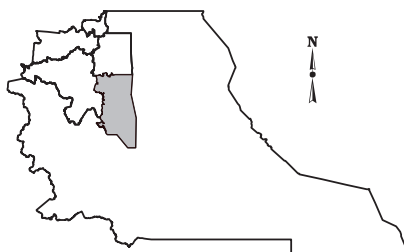




**2019**  
**Local Government Area**  
**Divisional Boundary Review**  
**FINAL DIVISIONAL BOUNDARIES**  
**CASSOWARY COAST REGIONAL**  
**DIVISION 3**



Location Map  
 DIVISION 3



**LEGEND**

	Final Division Boundary		Reserve, Parkland
	Final Adjacent Division		Waterbody
	Locality Boundary		Railway
	Adjacent Council		Main Road
			Wetland

This product was created using datasets from various authoritative sources, and is intended as a guide only to display final divisional boundaries.

The digital GIS data is available FREE to download from Queensland Spatial Catalogue, or Qspatial, at <http://qldspatial.information.qld.gov.au>

© The State of Queensland - 2019 (Department of Natural Resources, Mines and Energy)  
 © Electoral Commission of Queensland 2019 Creative Commons (CC BY)

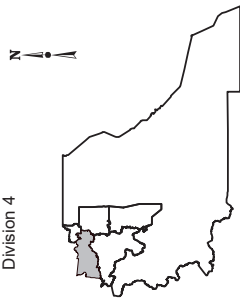
## FINAL DIVISIONAL BOUNDARIES

**CASSOWARY COAST REGIONAL**

## LEGEND

- Final Division Boundary  
Final Adjacent Division  
Locality Boundary  
Adjacent Council  
Reserve, Parkland  
Waterbody  
Railway  
Main Road  
Wetland

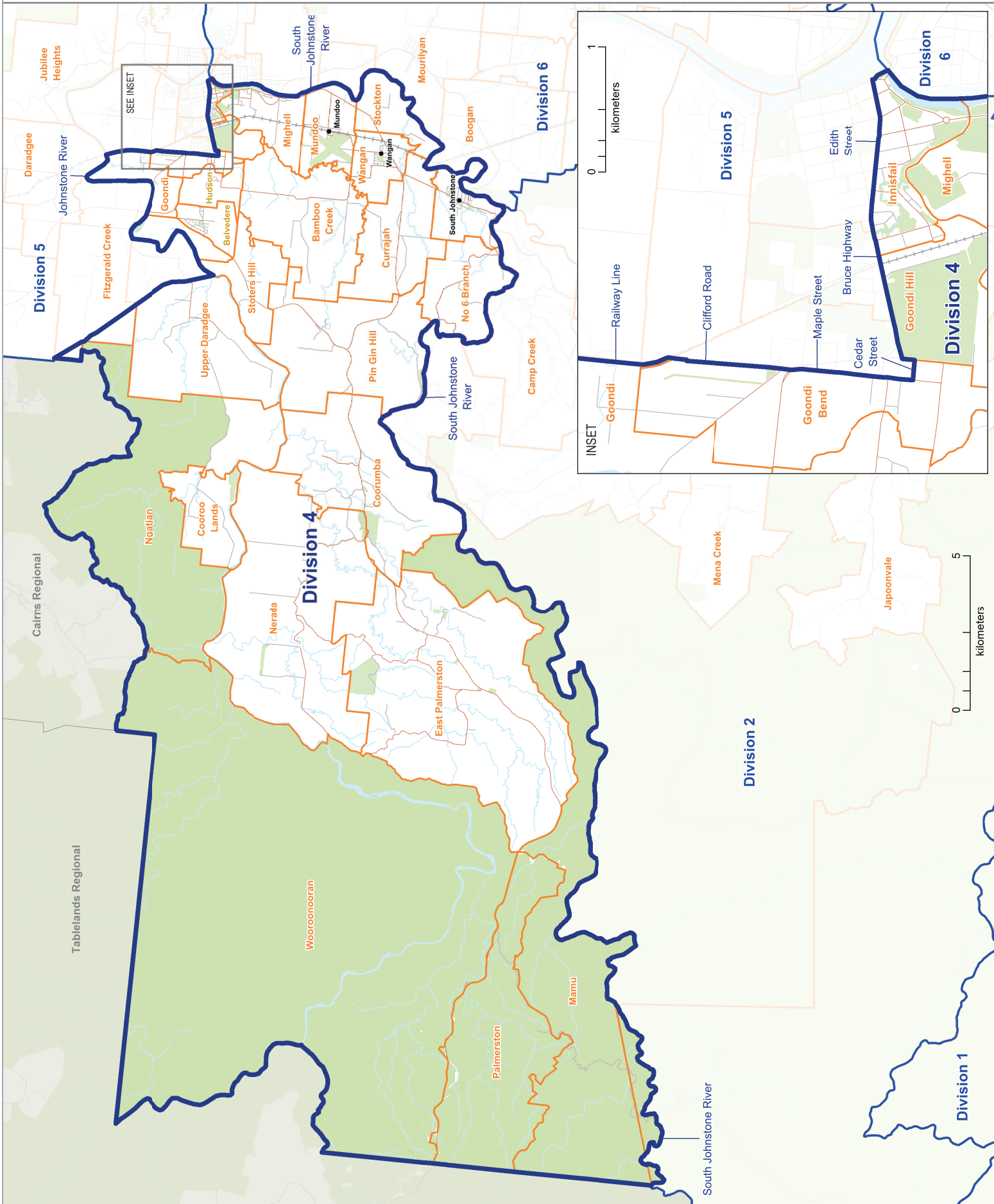
## Location Map Division 4



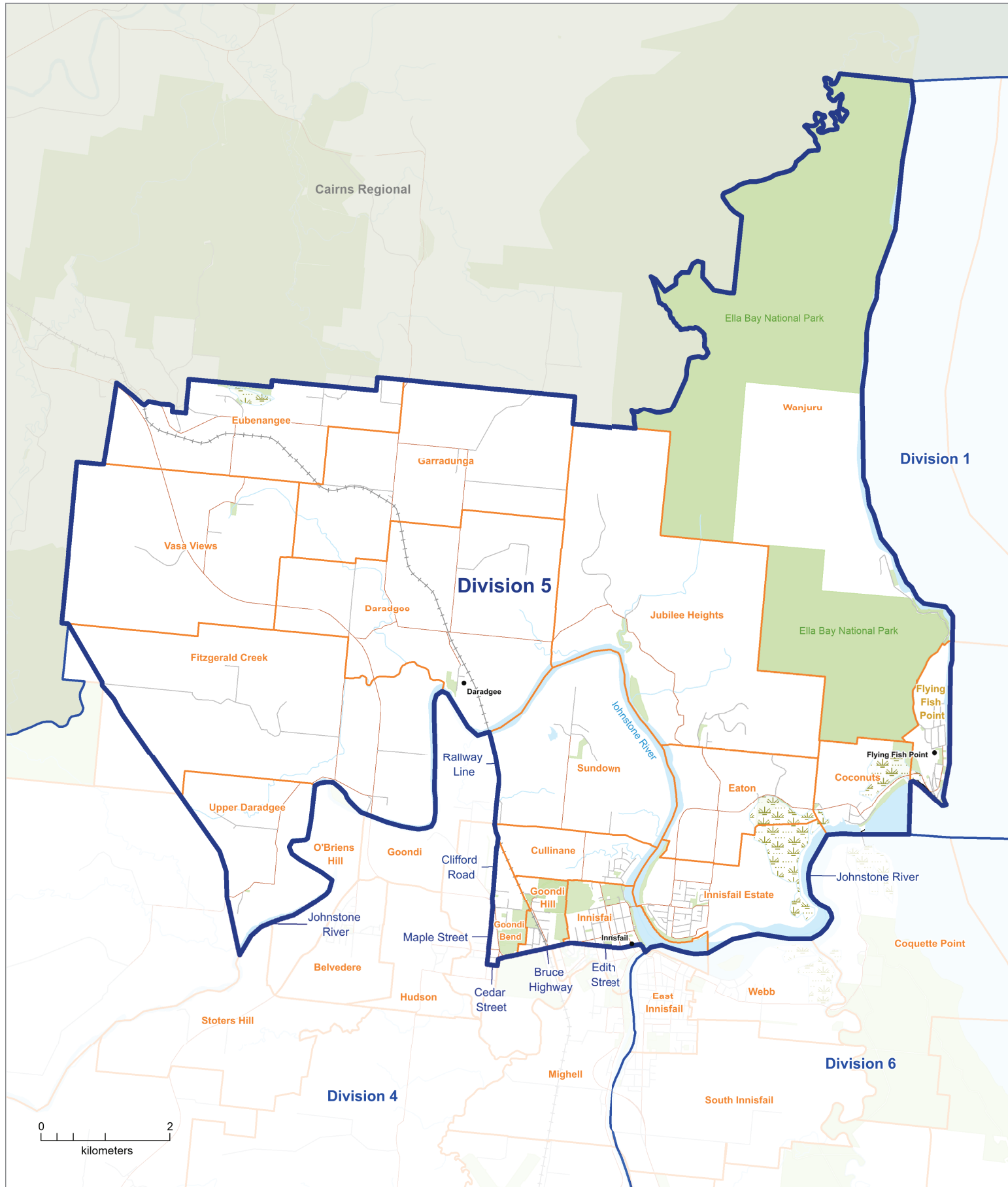
This product was created using datasets from various authoritative sources, and is intended as a guide only to display final divisional boundaries.

The digital GIS data is available FREE to download from Queensland Spatial Catalogue, or Qspatial, at <http://qldspatial.information.qld.gov.au>

© The State of Queensland - 2019 (Department of Natural Resources, Mines and Energy)  
© Electoral Commission of Queensland 2019  
Creative Commons (CC BY)







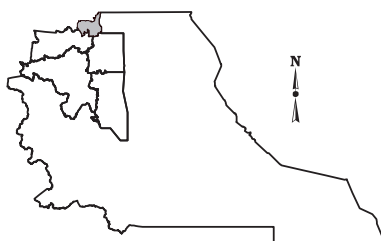
0 2  
kilometers

**2019**  
**Local Government Area**  
**Divisional Boundary Review**

**FINAL DIVISIONAL BOUNDARIES**  
**CASSOWARY COAST REGIONAL**  
**Division 5**



Location Map  
Division 5



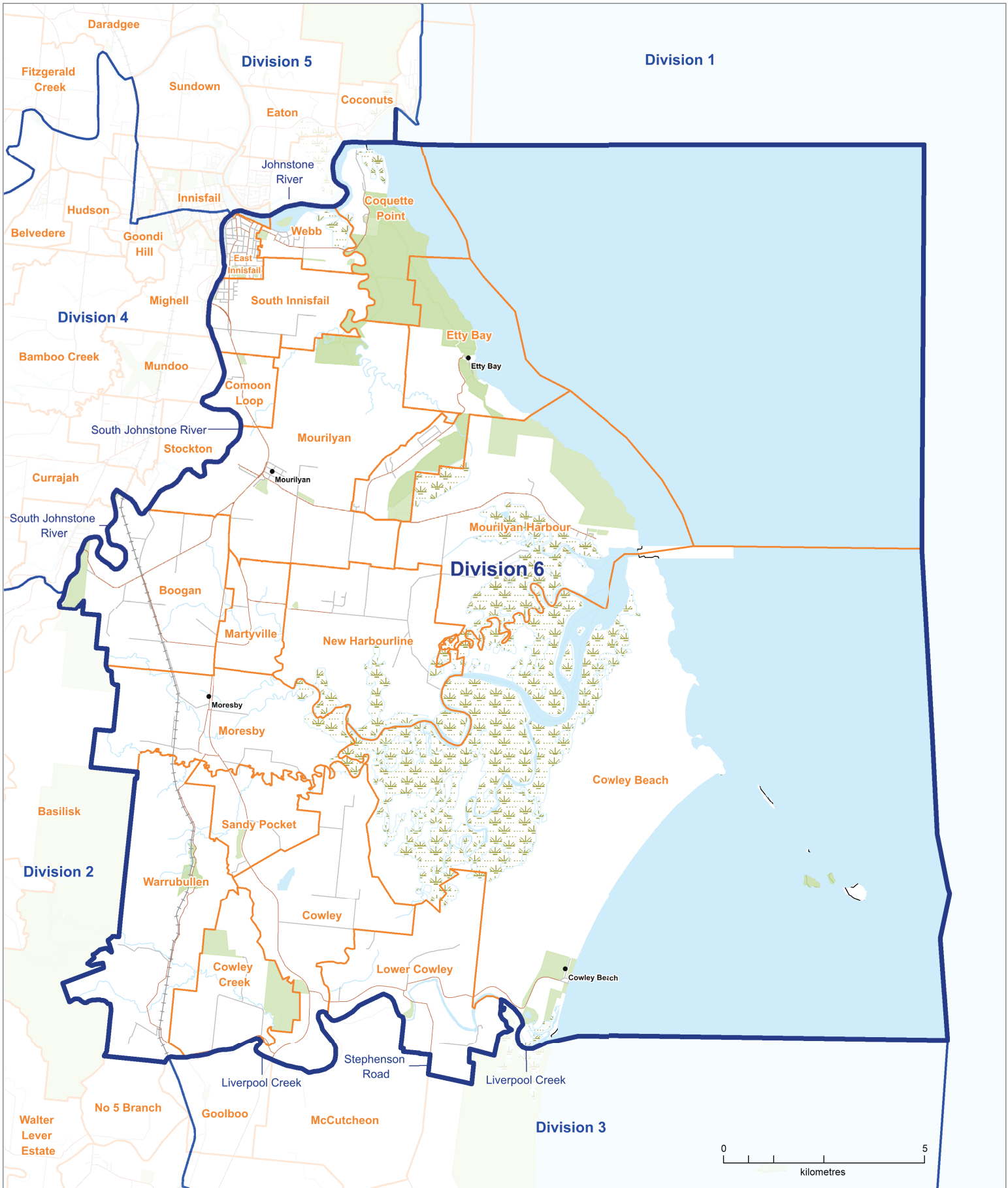
**LEGEND**

	Final Division Boundary		Reserve, Parkland
	Final Adjacent Division		Waterbody
	Locality Boundary		Railway
	Adjacent Council		Main Road
			Wetland

This product was created using datasets from various authoritative sources, and is intended as a guide only to display final divisional boundaries.

The digital GIS data is available FREE to download from Queensland Spatial Catalogue, or Qspatial, at <http://qldspatial.information.qld.gov.au>

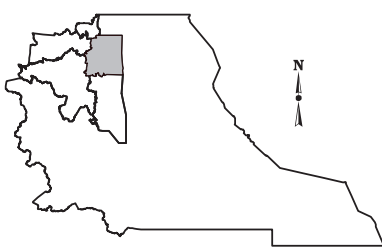
© The State of Queensland - 2019 (Department of Natural Resources, Mines and Energy)  
© Electoral Commission of Queensland 2019 Creative Commons (CC BY)



**2019**  
**Local Government Area**  
**Divisional Boundary Review**  
**FINAL DIVISIONAL BOUNDARIES**  
**CASSOWARY COAST REGIONAL**  
**Division 6**



Location Map  
 Division 6



**LEGEND**

- |                         |                   |
|-------------------------|-------------------|
| Final Division Boundary | Reserve, Parkland |
| Final Adjacent Division | Waterbody         |
| Locality Boundary       | Railway           |
| Adjacent Council        | Main Road         |
|                         | Wetland           |

This product was created using datasets from various authoritative sources, and is intended as a guide only to display final divisional boundaries.

The digital GIS data is available FREE to download from Queensland Spatial Catalogue, or Qspatial, at <http://qldspatial.information.qld.gov.au>

© The State of Queensland - 2019 (Department of Natural Resources, Mines and Energy)  
 © Electoral Commission of Queensland 2019 Creative Commons (CC BY)



# **APPENDIX B**

## **Minister's Referral**



Minister for Local Government,  
Minister for Racing and  
Minister for Multicultural Affairs

Our ref: MC19/1141

26 MAR 2019

1 William Street  
Brisbane Queensland 4000  
PO Box 15009  
City East Queensland 4002  
**Telephone +61 7 3719 7560**  
**Email** [lgrma@ministerial.qld.gov.au](mailto:lgrma@ministerial.qld.gov.au)  
**Website** [www.dlgrma.qld.gov.au](http://www.dlgrma.qld.gov.au)

ABN 65 959 415 158

Mr Pat Vidgen PSM  
Electoral Commissioner  
Electoral Commission Queensland  
GPO Box 1393  
BRISBANE QLD 4001

Dear Pat

I am writing to you in relation to a Local Government divisional review that was undertaken by the Cassowary Coast Regional Council in preparation for the 2020 Local Government quadrennial elections.

I have received correspondence from Mr James Gott, Chief Executive Officer of the Council dated 7 February 2019 advising of the results of the review, including that the projected number of electors in 2020 would be out of the quota of a reasonable proportion of electors as required by the *Local Government Act 2009* (the Act) in Division 3, with 16.7 per cent of the total number of electors more than the divisional average.

Division 3 of the Council includes the communities of South Mission Beach, Wongaling Beach, El Arish, Mission Beach, Bingle Bay, Cowley Beach and Silkwood East, all of which were severely impacted by Tropical Cyclone Yasi in 2011. The population of these centres declined after this event but appear to now be recovering.

There are no significant developments planned or underway for the Cassowary Coast Regional Council Division 3 at present. However, areas within the Division have been identified for future development and vacant land is available for building at attractive prices.

The proposed Ella Bay integrated resort development in Division 5, at a 470 hectare site, 10 kilometres northeast of Innisfail, is a \$1.4 billion project and has received preliminary material change of use approval from the Council, with multiple further approvals necessary for the project to proceed. If the project does proceed, it is planned for completion over 15 years. This may result in population increases in that division in the future.

On 27 February 2019, I received further correspondence from Mr Gott, informing me that at a Special Council Meeting on 26 February 2019, the Council passed a resolution that it would remain with the current arrangement of six divisions. In view of this resolution, a review of divisional boundaries within the Cassowary Coast Region is required to bring all divisions in line with the reasonable proportion of electors, in accordance with section 15 of the Act.

Section 18 of the Act provides that I may apply to the Local Government Change Commission (Change Commission) for an assessment of a proposed Local Government change. Further, under section 19 of the Act, the Change Commission must consider whether the Local Government change is consistent with the Act and must consider my views on any proposed changes.

I consider it appropriate to refer the matter to you for independent assessment and determination by the Change Commission. I recommend the Change Commission consider the potential future population increases in Divisions 3 and 5 as described above when undertaking its assessment review.

I have asked for Mr Daniel Westall, Manager Governance, Local Government Division in the Department of Local Government, Racing and Multicultural Affairs to assist you with any further queries. You may wish to contact Mr Westall on [REDACTED] or by email at [REDACTED].

Yours sincerely



**STIRLING HINCHLIFFE MP**  
**Minister for Local Government,**  
**Minister for Racing and**  
**Minister for Multicultural Affairs**

# **APPENDIX C**

## **Suggestions Notice & Public Submissions**

# LOCAL GOVERNMENT CHANGE COMMISSION

## Divisional Boundary Review of Cassowary Coast Regional Council

The Cassowary Coast Regional Council has advised its electoral divisions no longer meet the voter enrolment requirements set down in the *Local Government Act 2009*. As a result, the Minister for Local Government has referred the matter to the Change Commission for independent assessment.

### Enrolment Requirements

Each division of the Council is required to have relatively the same number of voters (quota) to ensure each person's vote has the same value. The quota for each division of the Cassowary Coast Regional local government area is 3,193 with a lower limit of 2,873 (-10%) and an upper limit of 3,512 (+10%).

For more information and enrolment statistics please see the Electoral Commission of Queensland's website: [www.ecq.qld.gov.au/electoral-boundaries/lg-reviews/DBRs](http://www.ecq.qld.gov.au/electoral-boundaries/lg-reviews/DBRs) or phone 1300 881 665.

### INVITATION FOR WRITTEN SUGGESTIONS

The Change Commission now invites suggestions regarding the divisional boundaries for the Cassowary Coast Regional Council. Submissions will be accepted until 5pm on 13 May 2019. Late submissions cannot be considered.

### Submissions can be lodged through:

#### - Online Form (*preferred*)

[www.ecq.qld.gov.au/electoral-boundaries/lg-reviews/DBRs](http://www.ecq.qld.gov.au/electoral-boundaries/lg-reviews/DBRs)

#### - Email

[LGCCsubmissions@ecq.qld.gov.au](mailto:LGCCsubmissions@ecq.qld.gov.au)

#### - Personal Delivery (Mon - Fri 9.00am - 5.00pm)

Electoral Commission of Queensland  
Level 20, 1 Eagle Street  
BRISBANE QLD 4000

#### - Post

Local Government Change Commission  
GPO Box 1393  
BRISBANE QLD 4001

**Submissions will be made available for public inspection.** To discuss any privacy concerns, please phone 1300 881 665.

Pat Vidgen PSM

**Electoral Commissioner**

# **Divisional Boundary Review of Cassowary Coast Regional Council**

## **List of Public Suggestions**

<b>Suggestion</b>	<b>Name / Organisation</b>
<b>1</b>	Kim Badcock
<b>2</b>	Pete Faulkner, President, Mission Bay Community Association (MBCA)
<b>3</b>	Truus Biddlecombe
<b>4</b>	Les Cavanagh
<b>5</b>	Rhonda Murdoch
<b>6</b>	Ken Gray, Mission Beach Aquatic & Recreation Club (MBARC) Management Committee
<b>7</b>	David Leotta
<b>8</b>	Amelia

**Sent:** Saturday, 27 April 2019 2:23 PM  
**To:** LG CC Submissions  
**Subject:** (78639) Cassowary Coast Regional Local Government Area - Mr Kim Badcock

Online submission for **Cassowary Coast Regional Local Government Area** from **Mr Kim Badcock**

---

#### **Submission Details**

**Name:** Mr Kim Badcock

**Submission Text:** I suggest that the new boundary for Division 3 should be South of Maria Creek and East of the Bruce Highway and North of East Feluga Road and then North from the Hull River.

**File Upload:** No file uploaded ()

---



## Mission Beach Community Association

*Representing Residents & Ratepayers of the villages of Mission Beach*

*Garners Beach • Bingil Bay • Narragon Beach • Mission Beach • Wongaling Beach  
Carmoo • South Mission Beach • Tam O'Shanter Point*

### Mission Beach Community Association Incorporated

#### Submission to the Change Commission with regard to Cassowary Coast Regional Council

Mission Beach Community Assn. (MBCA) is the largest community group within the Mission Beach region with a membership base of almost 800. The 'Mission Beach' area falls within Division 3 of the Cassowary Coast Regional Council. Significant population growth in the area, far in excess of that seen elsewhere within the Region, means that Division 3 is now outside of the quota limit.

Whilst we understand that the redrawing of divisional boundaries will be a complex exercise and may impact divisions beyond Division 3 there are two matters that we wish to draw to the Commission's attention as they make their deliberations.

- 1. MBCA's members strongly support the continuation of divisional representation in the Local Council.**  
This was demonstrated by the recent Council run survey.
- 2. MBCA's members strongly support maintaining all of the 'Mission Beach' area within a single Division.**

The 'Mission Beach' area is generally understood to include South Mission Beach, Wongaling Beach, Mission Beach, Narragon Beach, Bingil Bay, Garners Beach and Maria Creeks areas. Carmoo, which currently sits within Division 1, is also generally seen as 'Mission Beach' and we would support its inclusion into any new Division. For many years, prior to the amalgamation of the old Cardwell and Johnstone Shire Councils, Mission Beach was disadvantaged by not having a single unified voice in either Council and that is certainly not a situation that we would wish to see repeated. These areas, unlike many which surround them, are largely tourism-based destinations and tend to have similar concerns and issues which benefit from a single voice within Council.

Thank you.

Yours faithfully,



Pete Faulkner  
President

**Mission Beach 4852**  
Email: [Redacted]  
Website: <http://4852mbca.com>



**Sent:** Monday, 29 April 2019 2:03 PM  
**To:** LG CC Submissions  
**Subject:** (78650) Cassowary Coast Regional Local Government Area - Truus Biddlecombe

Online submission for **Cassowary Coast Regional Local Government Area** from **Truus Biddlecombe**

---

#### **Submission Details**

**Name:** Truus Biddlecombe

**Submission Text:** I believe Mission Beach, all of postcode 4852, should be one Division i.e. Division 3. El Arish could go to Division 2 and Kurrimine and Cowley Beach to Division 6 to make up for the lower numbers there.

**File Upload:** No file uploaded ()

---

From:  
Les Cavanagh

To:  
Electoral Commission of Queensland

Re:  
Cassowary Coast Regional Council (CCRC) Divisional Boundary Review (DBR)

Please consider the following changes for the current CCRC DBR:

1. Include the area between the South Johnstone River and Silkwood into Division 4.  
This includes the following suburbs:  
Camp Creek  
No 6 Branch  
Germantown  
Mena Creek  
Utchee Creek  
Moresby  
Boogan  
Warrubullen  
Bombeeta  
Japoonvale  
Walter Lever Estate  
No 5 Branch  
Silkwood  
No 4 Branch
2. Include Division 3 areas close to the Bruce Highway into Division 2  
This includes the following suburbs:  
El Arish  
Maria Creeks  
Friday Pocket  
Granadilla

The above suggestions take into consideration the way these communities live with the northern part of Division 2 mostly working/shopping etc in the Innisfail area and the southern part mostly working/shopping in Tully.

This would also improve access to Division councillor and likely representation for the area currently in the north of Division 2.

Thank You for considering this suggestion.

Kind Regards,  
Les Cavanagh

e.  
p.

**Sent:** Tuesday, 30 April 2019 1:02 PM  
**To:** LG CC Submissions  
**Subject:** (78660) Cassowary Coast Regional Local Government Area - Rhonda Murdoch

Online submission for **Cassowary Coast Regional Local Government Area** from **Rhonda Murdoch**

---

#### **Submission Details**

**Name:** Rhonda Murdoch

**Submission Text:** The natural boundary as determined by access from the Bruce Highway for Division 3 is the triangle formed from El Arish turn-off (exit from north) and Tully (exit from south) and encompassing the communities in postcode 4852. Postcode 4852 takes in Bingil Bay, Narragon Beach, Mission Beach, Wongaling Beach, South Mission Beach and Carmoo). Redistributing communities in the current Division 3 such as Cowley Beach, Kurrimine Beach and El Arish (those that do not have postcode 4852) would hopefully re balance the enrolled voters to comply within the maximum of just over 3,800 for the next 2 electoral cycles. This community (postcode 4852) lobbied very strongly to resolve the split caused by the division between the former Cardwell & Johnstone shires which was effectively resolved with the amalgamation of the 2 shires into Cassowary Coast Regional Council. It would be a devastating and retrograde step to divide the electoral representation again. The community voted strongly to retain Divisional representation -vs- undivided representation to expressly ensure that it has a Councillor who is dedicated to understanding the specific interests of a community bound by common interests.

**File Upload:** No file uploaded ()

---

Electoral Commission of Queensland  
 Local Government Change Commission  
 Division Boundary Review Cassowary Coast Regional Council

Change Commission Panel,

Thanks for the opportunity for input.

We seek to have “greater Mission Beach” residents remain in one division please.

I submit this on behalf of the Mission Beach Aquatic & Recreation Club which is the local community organization that worked for its community to achieve funding for our recently built Aquatic Centre. We are followed by over 2,100 people on Facebook and have around 750 members.

We believe the Cassowary Coast Regional Council should maintain electoral divisions because the region essentially has four main population nodes with quite different economies: Cardwell (1,600 residents at 2016 census), Tully (3,000), Innisfail (11,200) and Mission Beach (4,000).

As is evident in the Division data, Mission Beach is growing faster than other towns in this region.

I was researcher for 15 years for this community group and conducted many studies of the residents and their needs and aspirations. We found that people who identify as living in “Mission Beach area” live in the following SA1 catchment areas:

311 6004 Bingil Bay; 311 6009 Maria Creeks; 311 6104 Family Islands Group (including Bedarra Island); 311 6110 and 311 6111 Mission Beach; 311 6112, 311 6113, and 311 6114 Wongaling Beach; 311 6115 back of Hull River; 311 6120 and 311 6124 South Mission Beach and 311 6125 Carmoo.

These areas are largely driven by the tourism economy whereas areas beyond this town are more reliant on agriculture.

If we add up all your enrolment projections for these areas (March 2024 from your Excel spread sheet) we get 3,139 people. That means that it is possible to have Mission Beach as it’s own Division (Division 3) and the Division would be close to 100% of the target count.

Mission Beach was disadvantaged severely before 2008 because it was split between two LGA’s (Cardwell and Johnston Shires). That left us with no effective voice to advocate for our people. As a consequence, Mission Beach has struggled to catch up with the other three towns in the region in terms of infrastructure equality. There is still a large gap between the infrastructure available in each town, especially sports and recreation facilities, and it would return us to a state of considerable disadvantage if we could not maintain a voice for Mission Beach and its tourist economy.

As it stands there is one Division for Cardwell (1), one for Tully (2), one for Mission Beach (3) and three for Innisfail and surrounding areas. That arrangement should be retained if possible.

It makes sense to keep Mission Beach all in one electoral division to help us bridge the infrastructure gap over time. Please retain the region’s second biggest town in one division.

Ken Gray

MBARC Management Committee [REDACTED], 07 [REDACTED]

28 April 2019

**Sent:** Tuesday, 30 April 2019 8:14 PM  
**To:** LG CC Submissions  
**Subject:** (78665) Cassowary Coast Regional Local Government Area - David Leotta

Online submission for **Cassowary Coast Regional Local Government Area** from **David Leotta**

---

#### **Submission Details**

**Name:** David Leotta

**Submission Text:** I would like to see divisions abolished. Also I would like to see no voting for a Mayor as that automatically disqualifies some of the better class of candidates if they are unsuccessful. I would prefer to vote for the Councillors and them to vote for Mayor etc.

**File Upload:** No file uploaded ()

---

**Sent:** Saturday, 4 May 2019 8:03 PM  
**To:** LG CC Submissions  
**Subject:** (78686) Cassowary Coast Regional Local Government Area - Amelia

Online submission for **Cassowary Coast Regional Local Government Area** from **Amelia**

---

#### **Submission Details**

**Name:** Amelia

**Submission Text:** Division 3 should be shrunk to cover only 'Mission Beach'. The area covering Bingil Bay, Mission Beach, Wongaling, South Mission and Carmoo is a discrete community and should form the boundary for this division. The community has limited connection to Kurramine Beach which is connected to Silkwood. El Arish is more connected to Tully.

**File Upload:** No file uploaded ()

---

# **APPENDIX D**

## **Comments on Proposal Notice & Public Submissions**

# LOCAL GOVERNMENT CHANGE COMMISSION

## Divisional Boundary Review of Cassowary Coast Regional Council

The Cassowary Coast Regional Council advised its electoral divisions no longer meet the voter enrolment requirements set down in the *Local Government Act 2009* (the Act). As a result, the Minister for Local Government has referred the matter to the Change Commission for independent assessment.

The Change Commission has proposed changes to the Council's internal boundaries (divisions) following a period of public suggestions.

### **INVITATION FOR COMMENTS ON THE PROPOSAL**

Comments on the Change Commission's proposal will be accepted until 5pm on 8 July 2019. Late submissions cannot be considered.

To view the proposal and make a submission, please see the Electoral Commission of Queensland's website: <https://ecq.qld.gov.au/lgr/cassowarycoast> or phone 1300 881 665.

When making a comment, please remember each division must have relatively the same number of voters (quota) to ensure each person's vote has the same value. The quota for the Cassowary Coast Regional Council is 3,193 with a lower limit of 2,873 (-10%) and an upper limit of 3,512 (+10%).

#### **Comments can be lodged through:**

**- Online Form (*preferred*)**

<https://ecq.qld.gov.au/lgr/cassowarycoast>

**- Email**

[LGCCsubmissions@ecq.qld.gov.au](mailto:LGCCsubmissions@ecq.qld.gov.au)

**- Personal Delivery** (Mon - Fri 9.00am - 5.00pm)

Electoral Commission of Queensland  
Level 20, 1 Eagle Street, BRISBANE QLD 4000

**- Post**

Local Government Change Commission  
GPO Box 1393, BRISBANE QLD 4001

**Submissions will be made available for public inspection.** To discuss any privacy concerns, please phone 1300 881 665.

Pat Vidgen PSM

**Electoral Commissioner**



**Divisional Boundary Review of Cassowary Coast Regional Council**  
**List of Public Comments on the Proposal**

<b>Comment</b>	<b>Name / Organisation</b>
<b>1</b>	Lauren

**Sent:** Friday, 5 July 2019 9:29 PM  
**To:** LG CC Submissions  
**Subject:** (4438) Cassowary Coast Regional Local Government Area - Lauren

Online submission for **Cassowary Coast Regional Local Government Area** from **Lauren**

---

#### **Submission Details**

**Name:** Lauren

**Submission Text :** All residents under the 4852 post code should be in one division. Kurrimine & Mission Beach shouldn't be under the same division. This is great for residence of Carmoo to be under the division with towns that we reside next to.

**File Upload:** No file uploaded ()

---

# LOCAL GOVERNMENT CHANGE COMMISSION

---

W: [www.ecq.qld.gov.au](http://www.ecq.qld.gov.au)

E: [LGCCsubmissions@ecq.qld.gov.au](mailto:LGCCsubmissions@ecq.qld.gov.au)

T: 1300 881 665

P: Local Government Change Commission  
GPO Box 1393  
BRISBANE QLD 4001



**Electoral  
Commission**  
QUEENSLAND