

Review of Divisional Boundaries

2019 PROPOSED DETERMINATION
FRASER COAST REGIONAL COUNCIL

Contents

INTRODUCTION	3
Endorsement of proposal	3
THE REVIEW PROCESS	4
Determining the quota	4
CURRENT BOUNDARIES & ENROLMENT	5
Table 1 – Current and Projected Council Quota	5
Table 2 – Current and Projected Enrolment for the Existing Electoral Divisions	5
PUBLIC SUGGESTIONS	6
THE PROPOSED BOUNDARIES	6
Table 3 – Current and Projected Enrolment for the Proposed Electoral Divisions	6
Division 1	7
Division 2	7
Division 3	7
Division 4	8
Division 5	8
Division 8	8
Divisions 6, 7, 9 and 10	8
COMMENTS ON THE PROPOSAL INVITED	9
FINALISING THE REVIEW	9
IMPLEMENTATION	9

APPENDIX A Minister’s Referral

APPENDIX B Public Suggestions

APPENDIX C Maps

INTRODUCTION

The *Local Government Act 2009 (Qld)* (the Act) provides for a Local Government Change Commission (Change Commission). The Change Commission is responsible for periodically reviewing the internal boundaries of divided councils so that each division has relatively the same number of enrolled voters. This upholds the key democratic principle of 'one vote, one value', by ensuring each person's vote carries the same weight.

On 3 April 2019, the Minister for Local Government, Minister for Racing and Minister for Multicultural Affairs, The Honourable Stirling Hinchliffe MP referred a divisional boundary review of the Fraser Coast Regional Council (see Appendix A).

The Change Commission for this review consists of:

- Mr Pat Vidgen, Electoral Commissioner;
- Mr Wade Lewis, Casual Commissioner; and
- Mr Peter McGraw, Casual Commissioner.

The casual commissioners were appointed by the Governor in Council on 1 November 2018.

Endorsement of proposal

This report outlines the Change Commission's proposed boundaries for the electoral divisions of the Fraser Coast Regional Council.



Pat Vidgen PSM
Electoral Commissioner



Wade Lewis
Casual Commissioner



Peter McGraw
Casual Commissioner

THE REVIEW PROCESS

The Change Commission must ensure each division of the Council has a reasonable proportion of enrolled voters, herein referred to as 'quota'. Where possible, community interests, public submissions and easy-to-identify boundaries are also considered.

Assessments are conducted in any way the Change Commission deems appropriate, unless the Minister has provided specific directions.

The process for the divisional boundary review of the Fraser Coast is as follows:

1. Invite suggestions
2. Publish the Change Commission's proposal
3. Invite comments on the proposal
4. Publish the Change Commission's final determination report
5. Final determination report provided to the Minister for Local Government, for implementation by the Governor in Council
6. New boundaries come into effect at the 2020 Local Government Quadrennial Election

Determining the quota

A quota is determined by dividing the total number of enrolled voters by the number of councillors (other than the mayor), plus or minus 10%. The Change Commission also considers projected enrolment, so the divisions remain in quota for as long as possible.

Current enrolment data has been sourced from Queensland's electoral roll and projected enrolment data from the Queensland Government Statistician's Office of Queensland Treasury. Projections are based on the timing of future local government quadrennial elections.

Enrolment information is organised around 'Statistical Areas Level 1 (SA1)'. SA1s are geographical units used by the Australian Bureau of Statistics (ABS) for the release of census data. According to the ABS most SA1s have a population of between 200 to 800 persons with an average population of approximately 400 people.

Current and projected enrolment data are available for download on the Electoral Commission of Queensland's (ECQ) website.

CURRENT BOUNDARIES & ENROLMENT

The Fraser Coast Regional Council has 76,344 voters and is divided into 10 single-member electoral divisions plus a mayor. Table 1 shows the Council's current enrolment quota as at 31 January 2019 and the projected quota for 31 March 2024.

Table 2 shows the current and projected enrolment for the Council's existing divisional boundaries. As at 31 January 2019, Divisions 3, 5 and 8 were out of quota and Division 4 was close to the quota, and in 2024, Divisions 3, 4, 5 and 8 are projected to be out of quota.

Table 1 – Current and Projected Council Quota		
	31 January 2019	31 March 2024
Number of divisions	10	10
Enrolment	76,344	80,837
Quota per division	7,634	8,084
Quota (+10%) per division	8,398	8,892
Quota (-10%) per division	6,871	7,275

Table 2 – Current and Projected Enrolment for the Existing Electoral Divisions				
Division	Enrolment as at 31/01/2019	(%) Deviation from Quota	Projected Enrolment as at 31/03/2024	(%) Deviation from Quota
Division 1	7,076	-7.31	7,505	-7.16
Division 2	7,657	0.3	8,230	1.81
Division 3	6,764	-11.4	6,856	-15.19
Division 4	6,885	-9.82	7,019	-13.17
Division 5	8,425	10.36	9,236	14.25
Division 6	7,776	1.85	8,195	1.38
Division 7	8,038	5.29	8,610	6.51
Division 8	8,693	13.87	9,351	15.68
Division 9	7,639	0.06	8,103	0.24
Division 10	7,391	-3.19	7,732	-4.35

PUBLIC SUGGESTIONS

The Change Commission sought public suggestions to assist in developing its proposal. Advertisements were placed in The Courier-Mail, a local newspaper and on the ECQ's social media platforms.

Suggestions were invited from 27 April 2019 to 5pm 13 May 2019. Two submissions were received and are available to view on the ECQ's website or at Appendix B.

One submission requested Burrum Heads be included in the Hervey Bay electorate and not the Maryborough electorate. This submission appears to be discussing State electorates which is out of the scope of this review. From a local government perspective however, it is no longer possible to have Burrum Heads in the same division as Hervey Bay, as it has become unsustainable from an enrolment perspective.

The second suggestion requested the suburb of Aldershot be included in the Maryborough division. The Change Commission modelled this submission; however, a decision was made to include more of central Maryborough in Division 3 rather than Aldershot. The reason for this decision is that it better balances enrolment across Divisions 1, 3 and 4.

THE PROPOSED BOUNDARIES

The proposed boundaries for the Fraser Coast Regional Council are detailed below. They bring enrolment in each division into quota and the Change Commission has made a concerted effort to unite suburbs where possible.

Table 3 shows the current and projected enrolment for the proposed electoral divisions. Maps of the proposed divisions are in Appendix C and interactive maps are on the ECQ website.

Division	Enrolment as at 31/01/2019	(%) Deviation from Quota	Projected Enrolment as at 31/03/2024	(%) Deviation from Quota
Division 1	7,475	-2.09	8,059	-0.31
Division 2	7,737	1.34	8,368	3.52
Division 3	7,690	0.73	7,796	-3.56
Division 4	7,790	2.04	8,028	-0.69
Division 5	7,083	-7.22	7,595	-6.05
Division 6	7,776	1.85	8,195	1.38
Division 7	8,038	5.29	8,610	6.51
Division 8	7,725	1.19	8,351	3.31
Division 9	7,639	0.06	8,103	0.24
Division 10	7,391	-3.19	7,732	-4.35

Division 1

Division 1 has expanded both north and south to gain electors and improve its enrolment. In the south, a large amount of rural and forest area has been shared from Division 2. In the north, the boundary has expanded to the coast to gain more heavily populated areas that have connectivity with the Howard area.

The Change Commission proposes the following changes. The Division:

- a. Gains the remainder of the Boompa, Brooweena, Aramara, Thinoomba, Yerrra, Pilerwa, and Mungar suburbs, as well as the entirety of the, Teebar, Malarga, Gigoomgan, Calgoa, Marodian, Glenbar, Woocoo, Mount Urah, St Mary, Pioneers Rest and Antigua suburbs from Division 2;
- b. Gains the balance of the Burrum River, Burrum Heads, Beelbi Creek and Burgowan suburbs from Division 5; and
- c. Transfers its portion of the Tinana suburb to Division 2.

The proposed Division has 7,475 voters which is -2.09% below quota and is predicted to have 8,059 voters by 2024 which would be -0.31% below quota.

Division 2

Division 2 has been reoriented to follow the road systems in a north-south direction rather than the current east-west orientation. This is designed to improve connectivity and serviceability within the division, while sharing the rural and forest areas between a few councillors.

The Change Commission proposes the following changes. The Division:

- a. Gains the remainder of the Tinana suburb from Division 1;
- b. Transfers the balance of the Boompa, Brooweena, Aramara, Thinoomba, Yerrra, Pilerwa, and Mungar suburbs, as well as the entirety of the Teebar, Malarga, Gigoomgan, Calgoa, Marodian, Glenbar, Woocoo, Mount Urah, St Mary, Pioneers Rest and Antigua suburbs to Division 1; and
- c. Transfers the Bidwill, Magnolia, Tuan Forest, Tin Can Bay, Tinnanbar, Poona, Tuan, Boonooroo, Boonooroo Plains and Maaroom suburbs (or those portions it currently holds), as well as the small island areas adjacent to the Maroom and Boonooroo suburbs to Division 4.

The proposed Division has 7,737 voters which is 1.34% above quota and is predicted to have 8,368 voters by 2024 which would be 3.52% above quota.

Division 3

Division 3 has been expanded north and slightly south to gain electors and bring it into quota.

The Change Commission proposes the following changes. The Division:

- a. Gains an additional portion of the Maryborough suburb from Division 4, using Walker Street, Tooley Street, Churchill Street and John Street as the boundary;
- b. Gains a portion of the Aldershot suburb from Division 5;
- c. Gains most of the Susan River area and the remainder of the Dundathu and Walliebum suburbs from Divisions 5 and 8; and
- d. Gains the entirety of the Prawle and Tandora suburbs from Division 8.

The proposed Division has 7,690 voters which is 0.73% above quota and is predicted to have 7,796 voters by 2024 which would be -3.56% below quota.

Division 4

Division 4 has expanded south to gain a large amount of area from Division 2. As with Division 1 and 2, the decision to expand Division 4 south is due to the direction of the road systems and to share more of the rural and forest areas among a few councillors.

The Change Commission proposes the following changes. The Division:

- a. Gains the Bidwill, Magnolia, Tuan Forest, Tin Can Bay, Tinnanbar, Poona, Tuan, Boonooroo, Boonooroo Plains and Maaroom suburbs (or those portions held), as well as the small island areas adjacent to the Maaroom and Boonooroo suburbs from Division 2; and
- b. Transfers a portion of the Maryborough suburb to Division 3, using Walker Street, Tooley Street, Churchill Street and John Street as the boundary.

The proposed Division has 7,790 voters which is 2.04% above quota and is predicted to have 8,028 voters by 2024 which would be -0.69% below quota.

Division 5

Division 5 has contracted in the south and west, while gaining a few suburbs from Division 8 in the east. This exchange had a dual purpose, both lowering enrolment so Division 5 is in quota, while also creating a more urban based division with a clear community of interest.

The Change Commission proposes the following changes. The Division:

- a. Gains a portion of the Susan River area, most of the Nikenbah suburb and the entirety of the Sunshine Acres and Bunya Creek suburbs from Division 8;
- b. Transfers the balance of the Burrum River, Burrum Heads, Beelbi Creek and Burgowan suburbs to Division 1; and
- c. Transfers its portion of the Walliebum, Aldershot, Dundathu and Susan River suburbs to Division 3.

The proposed Division has 7,083 voters which is -7.22% below quota and is predicted to have 7,595 voters by 2024 which would be -6.05% below quota.

Division 8

The southern boundary of Division 8 has contracted north to follow the Urraween and Kawungan suburb boundaries, as well as lot boundaries in the Nikenbah locality. This created an urban based division that is within quota.

The Change Commission proposes the following changes. The Division:

- a. Transfers the balance of the Susan River area to Divisions 3 and 5;
- b. Transfers its portions of the Dandathu and Walliebum suburbs and the entirety of the Tandora and Prawle suburbs to Division 3; and
- c. Transfers most of the Nikenbah locality, as well as the entirety of the Sunshine Acres and Bunya Creek suburbs to Division 5.

The proposed Division has 7,725 voters which is 1.19% above quota and is predicted to have 8,351 voters by 2024 which would be 3.31% above quota.

Divisions 6, 7, 9 and 10

No changes are proposed for the boundaries of Divisions 6, 7, 9 or 10.

COMMENTS ON THE PROPOSAL INVITED

Comments on this proposal are invited until 5pm, 8 July 2019 and can be lodged through:

Online Form

<https://ecq.qld.gov.au/lgr/frasercoast>

Email

LGCCsubmissions@ecq.qld.gov.au

Personal Delivery

Electoral Commission of Queensland
Level 20, 1 Eagle Street
BRISBANE QLD 4000

Post

Local Government Change Commission
GPO Box 1393
BRISBANE QLD 4001

It is recommended that those submitting comments:

- consider the enrolment requirements outlined in the Act and in this report;
- clearly state which division/s your comment relates to;
- provide supporting information for why you support or oppose a proposed boundary change or public submission; and
- if you oppose a change, provide alternative boundary suggestions and reasoning.

FINALISING THE REVIEW

After reviewing the public comments on the proposal, the Change Commission will make a final determination on the Council's divisional boundaries.

The results of a Change Commission review must be provided to the Minister for Local Government. A notice of results is published in a local newspaper, the Queensland Government Gazette and on the ECQ website.

A decision of the Change Commission is not subject to appeal.

IMPLEMENTATION

A local government change can only be implemented by the Governor in Council under a regulation.

The regulation may provide for anything that is necessary or convenient to facilitate the change.

APPENDIX A

Minister's Referral



Minister for Local Government,
Minister for Racing and
Minister for Multicultural Affairs

Our ref: MC19/1182

03 APR 2019

1 William Street
Brisbane Queensland 4000
PO Box 15009
City East Queensland 4002
Telephone +61 7 3719 7560
Email lgma@ministerial.qld.gov.au
Website www.dlgrma.qld.gov.au

ABN 65 959 415 158

Mr Pat Vidgen PSM
Electoral Commissioner
Electoral Commission Queensland
GPO Box 1393
BRISBANE QLD 4001

Dear Pat

I am writing to you in relation to a Local Government electoral review that was undertaken by the Fraser Coast Regional Council in preparation for the 2020 Local Government quadrennial elections.

I have received correspondence from Mr Ken Diehm, Chief Executive Officer of the Council dated 28 February 2019 advising of the results of the review, including that the number of electors is out of the quota of a reasonable proportion of electors in a number of divisions, as required by the *Local Government Act 2009* (the Act).

The number of electors in Division 3, which stretches from the Bruce Highway in the west to the Mary River in the south and Saltwater Creek in the north, is 11 per cent fewer electors than the average and may be attributed to population migration from rural areas to the urbanised centres. This may also be the case in Division 4, which is still within the quota range but almost at the lower limit of population.

Division 5, which stretches from Nikenbah to Burrum Heads and incorporates the emerging coastal centres of Craginish, Dundowran Beach and Toogoom, has 10 per cent more electors than the average. The population increase may be attributed to additional land being available for residential subdivision on the fringes of Hervey Bay City.

The number of electors in Division 8, which stretches from Susan River to Eli Waters, is 14 per cent more electors than the average. Similarly, the population increase may be attributed to additional land being available for residential subdivision.

The Department of Local Government, Racing and Multicultural Affairs sought information from the Department of State Development, Manufacturing, Infrastructure and Planning about the development and population trends in the Fraser Coast Regional Council. I am advised the key differences in trends relate to the fact that Division 5 and Division 8 cover growth areas around Hervey Bay, while Division 3 is located in an area experiencing less development in and around the northern area of Maryborough. It was considered that Division 5 and Division 8 are likely to continue to experience growth at a higher rate than Division 3.

As you are aware, section 18 of the Act provides that only I may apply to the Local Government Change Commission (Change Commission) for an assessment of a proposed Local Government change. Further, under section 19 of the Act, the Change Commission must consider whether the Local Government change is consistent with the Act and must consider my views on any proposed changes.

Having examined the Council's submission, I consider it appropriate to refer the matter to you for independent assessment and determination by the Change Commission. I recommend that in assessing any changes to divisional boundaries, the Change Commission consider the potential population changes associated with the population migration from rural areas in Division 3 and Division 4 to the growing urbanised and coastal centres in Division 5 and increasing populations in the new residential subdivisions in Division 5 and Division 8.

I have asked for Mr Daniel Westall, Manager, Governance Local Government Division in the Department to assist you with any further queries. You may wish to contact Mr Westall on [REDACTED] or by email at [REDACTED].

Yours sincerely



STIRLING HINCHLIFFE MP
Minister for Local Government,
Minister for Racing and
Minister for Multicultural Affairs

APPENDIX B

Public Suggestions

List of Public Suggestions
Divisional Boundary Review of Fraser Coast Regional Council

Suggestion	Name / Organisation
1	Mark Wicks
2	Carolyn Packer, Secretary, Advocates for the Community

From: noreply@ecq.qld.gov.au
Sent: Tuesday, 30 April 2019 7:54 AM
To: LG CC Submissions
Subject: (78655) Fraser Coast Regional Local Government Area - Mark Wicks

Online submission for **Fraser Coast Regional Local Government Area** from **Mark Wicks**

Submission Details

Name: Mark Wicks

Submission Text: I would like to request that Burrum Heads be included in the Hervey Bay electorate and not in the Maryborough electorate as it currently is. Burrum Heads is geographically in the Hervey Bay region and not Maryborough region at all. This is a fact that any reasonable person can see on a map or in location on the ground whilst visiting these areas. Regardless of government the township of Burrum Heads is a forgotten part of the electorate and definitely needs to be included in Hervey Bay and not Maryborough. Thank you, Mark Wicks

File Upload: No file uploaded ()

From: Advocates For the Community
Sent: Tuesday, 30 April 2019 9:39 AM
To: LG CC Submissions
Subject: Aldershot boundary

Dear ECQ,

We are writing on behalf of residents in Aldershot Qld, who want to be re zone to come under Maryborough division not Hervey Bay.

Aldershot, missed out on rezoning for State elections, we are not sure if Federal elections can help.


Residents at Aldershot have to use Hervey Bay or Hintler to get age care assistants, example; Blue Care, Home Assist and other Government services.

Can they zone be changed to Maryborough Qld by Fraser Coast Regional Council and Electrol Office

We feel this would be in the best interest of the Aldershot residents.

We hope you help, thank you

Kind regards,

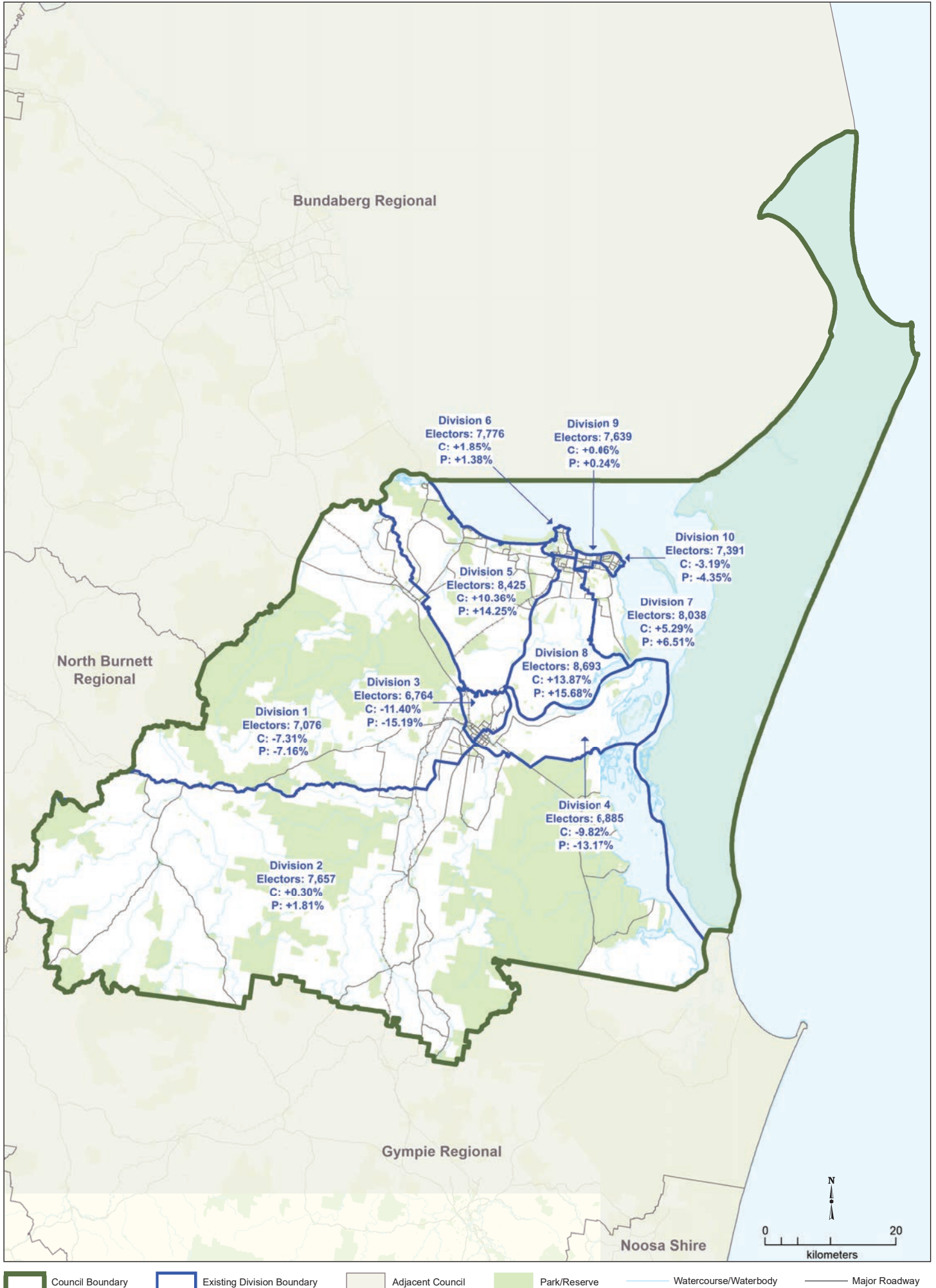
Carolyn Packer
Secretary


APPENDIX C

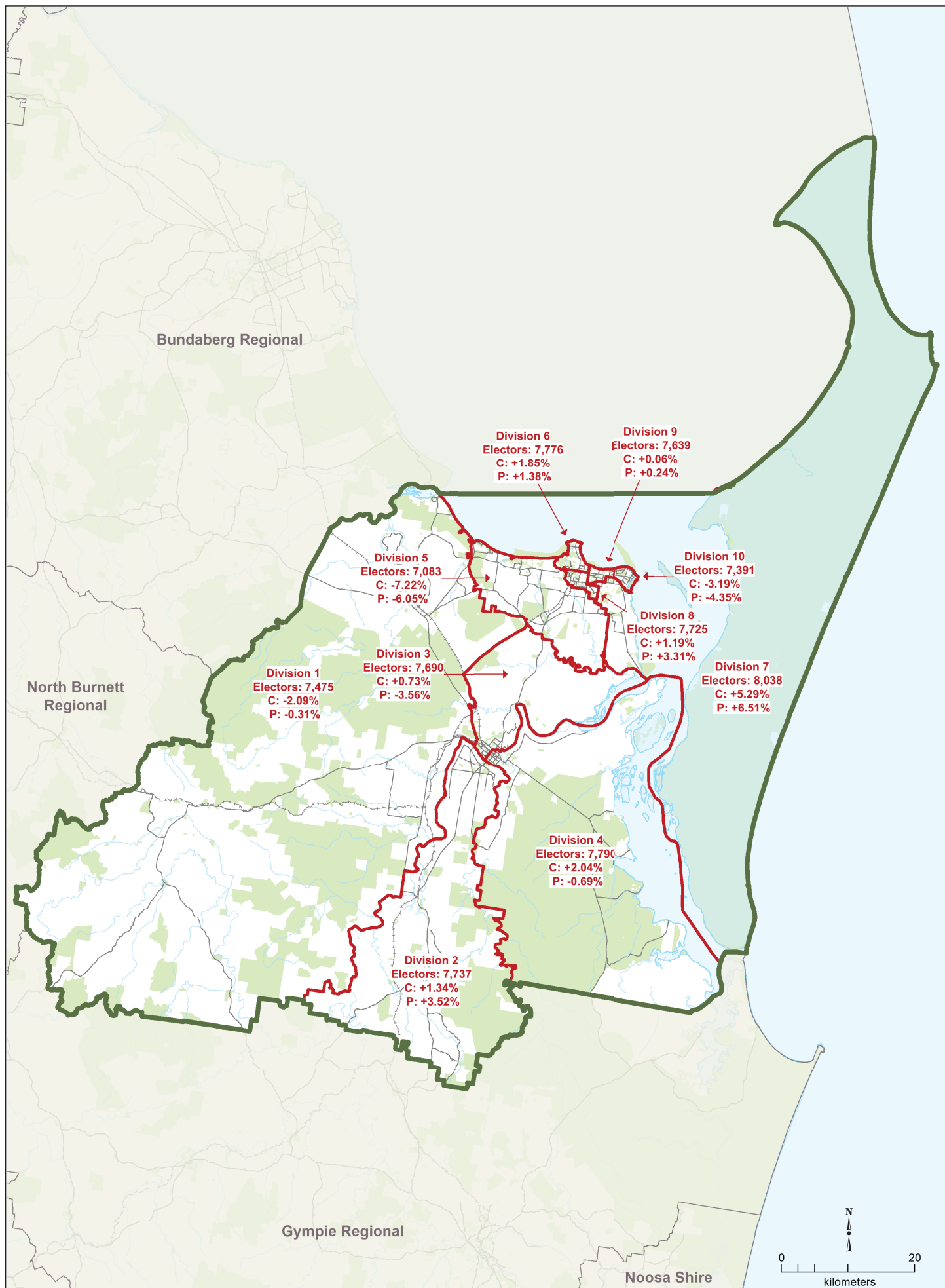
Maps

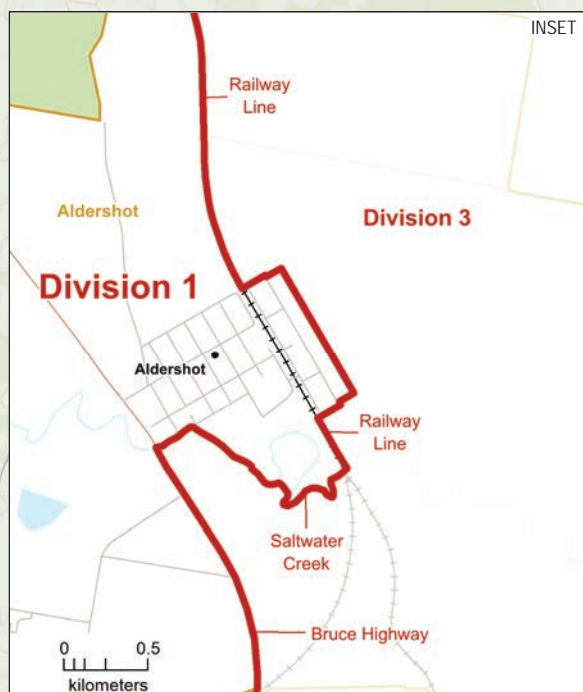
FRASER COAST REGIONAL

Existing Electoral Divisions



FRASER COAST REGIONAL Proposed Electoral Divisions



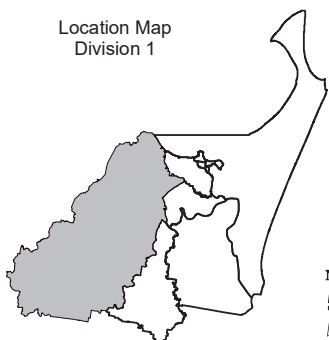


2019
Local Government Area
Divisional Boundary Review

PROPOSED DIVISIONAL BOUNDARIES
FRASER COAST REGIONAL
Division 1



Location Map
 Division 1



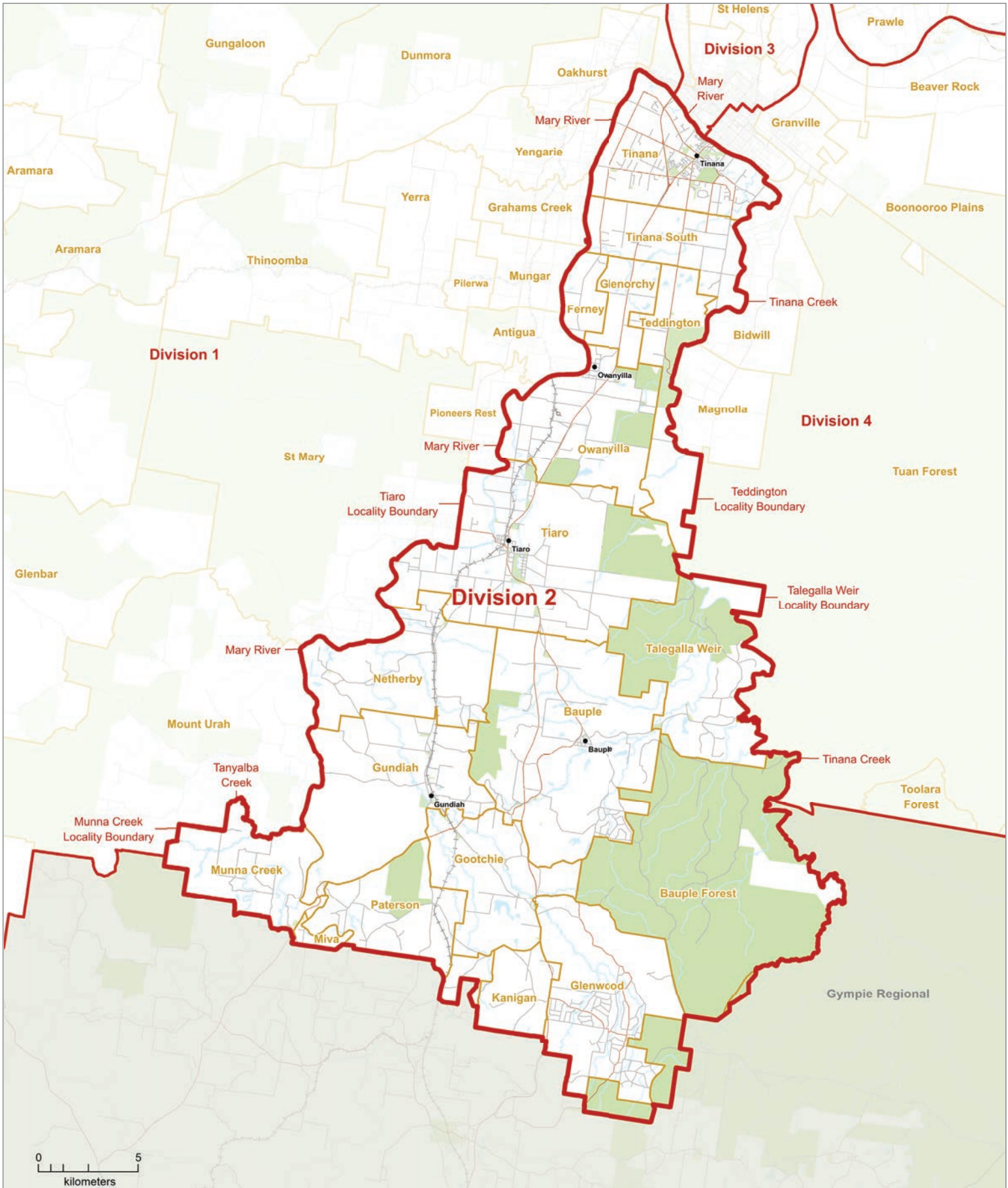
LEGEND

	Proposed Division Boundary		Reserve, Parkland
	Proposed Adjacent Division		Waterbody
	Locality Boundary		Railway
	Adjacent Council		Main Road
			Wetland

This product was created using datasets from various authoritative sources, and is intended as a guide only to display proposed divisional boundaries.

The digital GIS data is available FREE to download from Queensland Spatial Catalogue, or Qspatial, at <http://qldspatial.information.qld.gov.au>

© The State of Queensland - 2019 (Department of Natural Resources, Mines and Energy)
 © Electoral Commission of Queensland 2019 Creative Commons (CC BY)



2019
Local Government Area
Divisional Boundary Review

PROPOSED DIVISIONAL BOUNDARIES
FRASER COAST REGIONAL
Division 2



LEGEND

- Proposed Division Boundary
- Proposed Adjacent Division
- Locality Boundary
- Adjacent Council
- Reserve, Parkland
- Waterbody
- Railway
- Main Road
- Wetland

This product was created using datasets from various authoritative sources, and is intended as a guide only to display proposed divisional boundaries.

The digital GIS data is available FREE to download from Queensland Spatial Catalogue, or Qspatial, at <http://qldspatial.information.qld.gov.au>

© The State of Queensland - 2019 (Department of Natural Resources, Mines and Energy)
 © Electoral Commission of Queensland 2019 Creative Commons (CC BY)

2019
Local Government Area
Divisional Boundary
Review

PROPOSED DIVISIONAL
BOUNDARIES

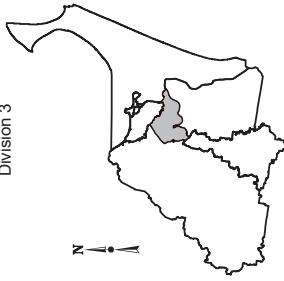
FRASER COAST REGIONAL

Division 3

LEGEND

- Proposed Division Boundary
- Proposed Adjacent Division
- Locality Boundary
- Adjacent Council
- Reserve, Parkland
- Waterbody
- Railway
- Main Road
- Welland

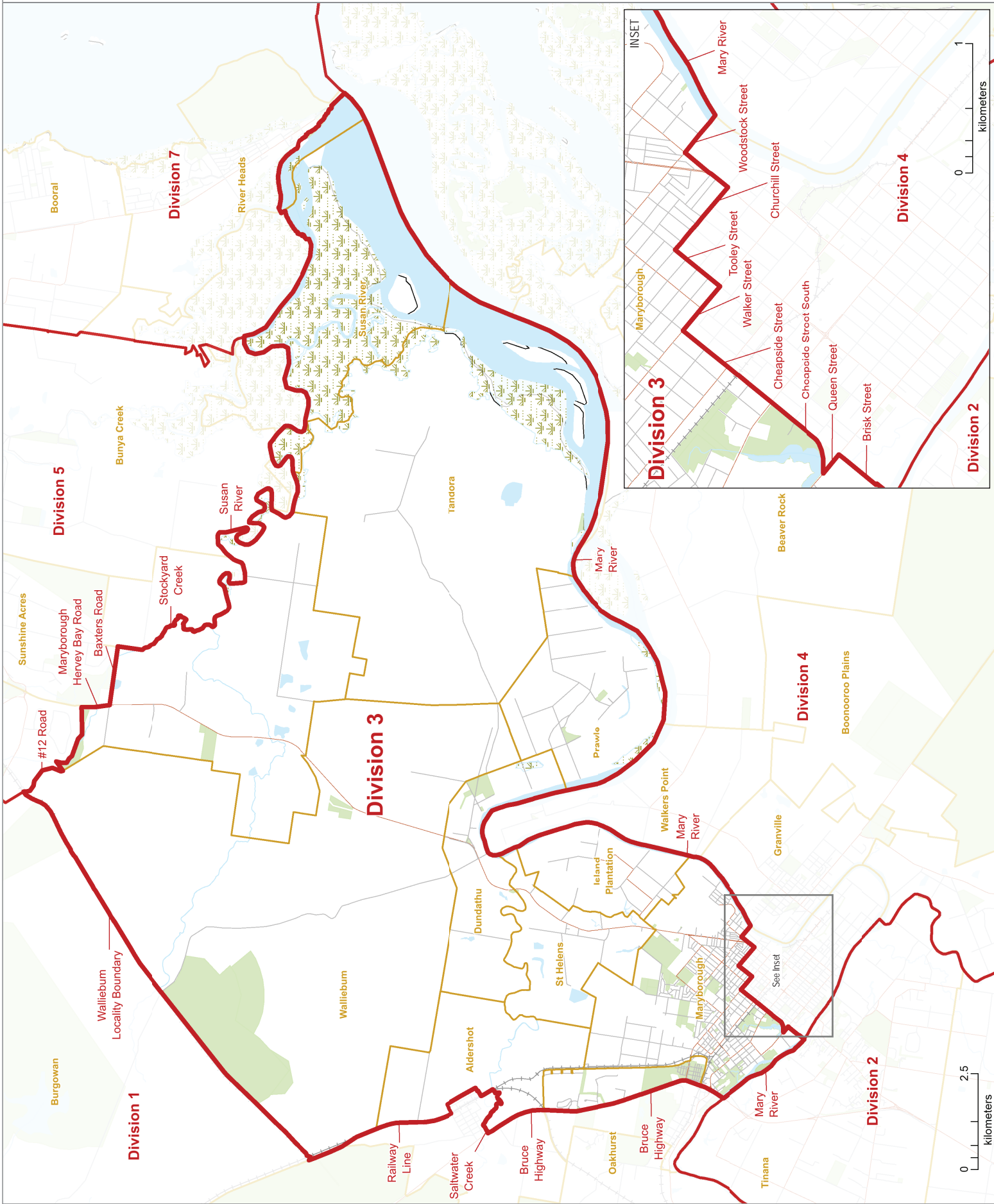
Location Map
Division 3



This product was created using datasets from various authoritative sources, and is intended as a guide only to display proposed divisional boundaries.

The digital GIS data is available FREE to download from Queensland Spatial Catalogue or Qspatial, at <http://qdsportal.information.qld.gov.au>

© The State of Queensland - 2019 (Department of Natural Resources, Mines and Energy)
© Electoral Commission of Queensland 2019
Creative Commons (CC BY)



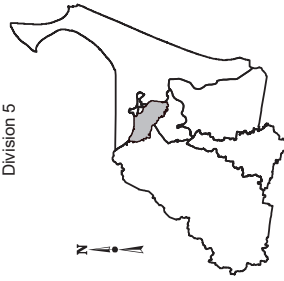
PROPOSED DIVISIONAL BOUNDARIES

FRASER COAST REGIONAL Division 5

LEGEND

- Proposed Division Boundary
- Proposed Adjacent Division
- Locality Boundary
- Adjacent Council
- Reserve, Parkland
- Waterbody
- Railway
- Main Road
- Welland

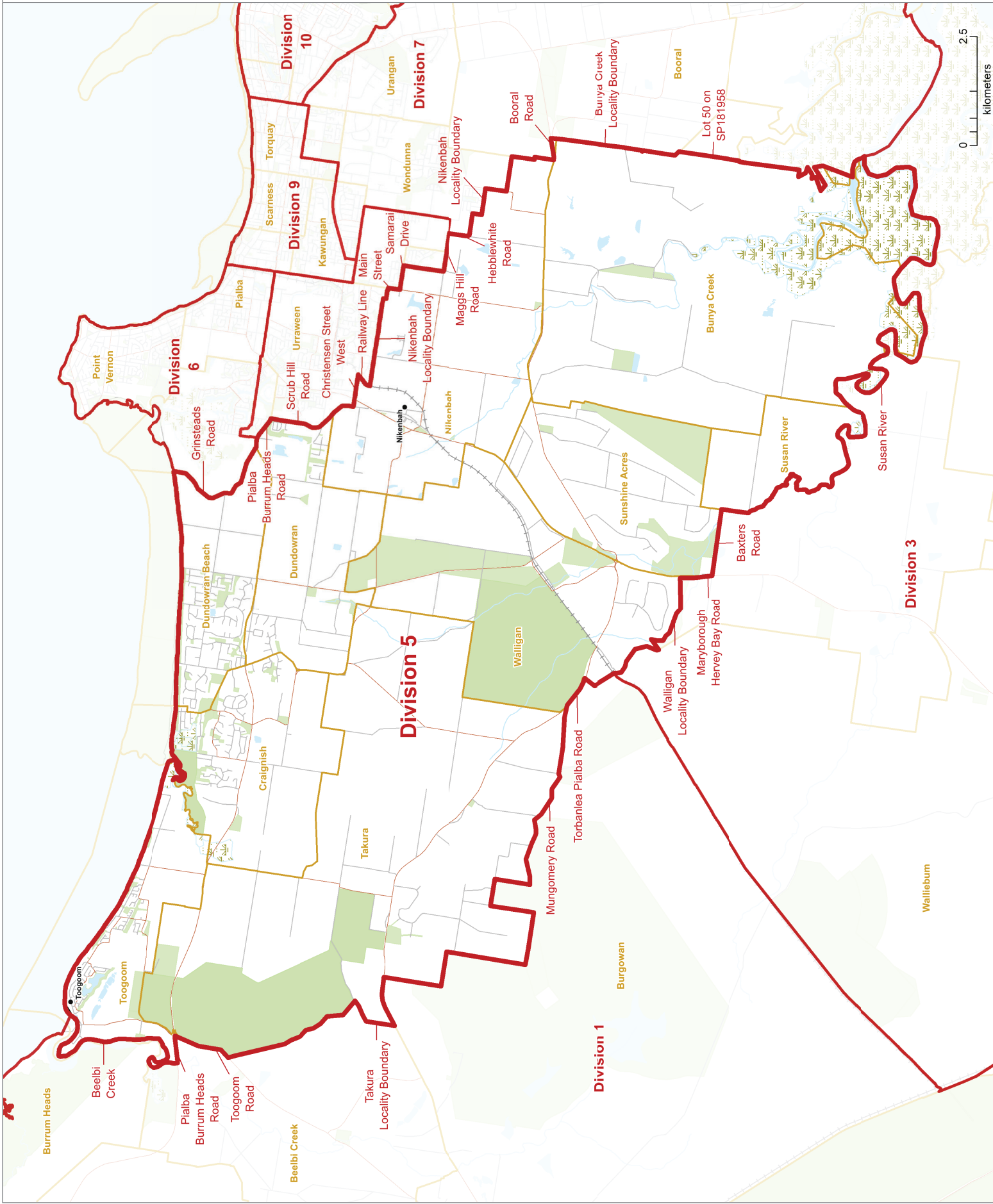
Location Map
Division 5



This product was created using datasets from various authoritative sources, and is intended as a guide only to display proposed divisional boundaries.

The digital GIS data is available FREE to download from Queensland Spatial Catalogue or Qspatial, at <http://qdsportal.information.qld.gov.au>

© The State of Queensland - 2019 (Department of Natural Resources, Mines and Energy)
© Electoral Commission of Queensland 2019
Creative Commons (CC BY)



2019
Local Government Area
Divisional Boundary
Review

PROPOSED DIVISIONAL
BOUNDARIES

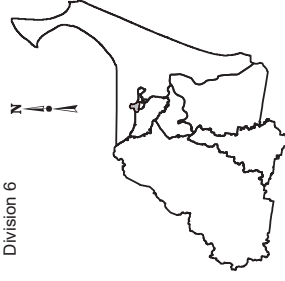
FRASER COAST REGIONAL

Division 6

LEGEND

- Proposed Division Boundary
- Proposed Adjacent Division
- Locality Boundary
- Adjacent Council
- Reserve, Parkland
- Waterbody
- Railway
- Main Road
- Welland

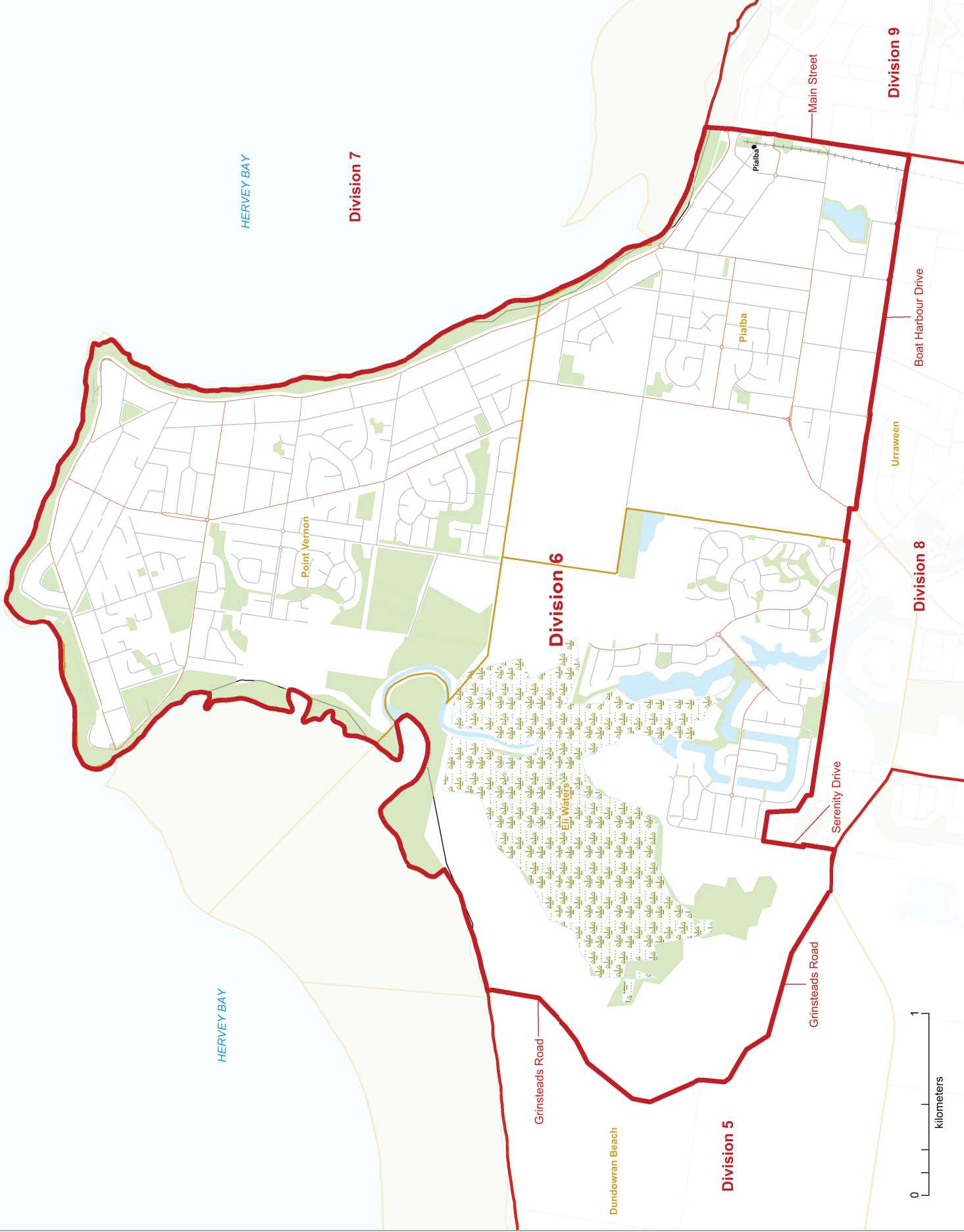
Location Map
Division 6

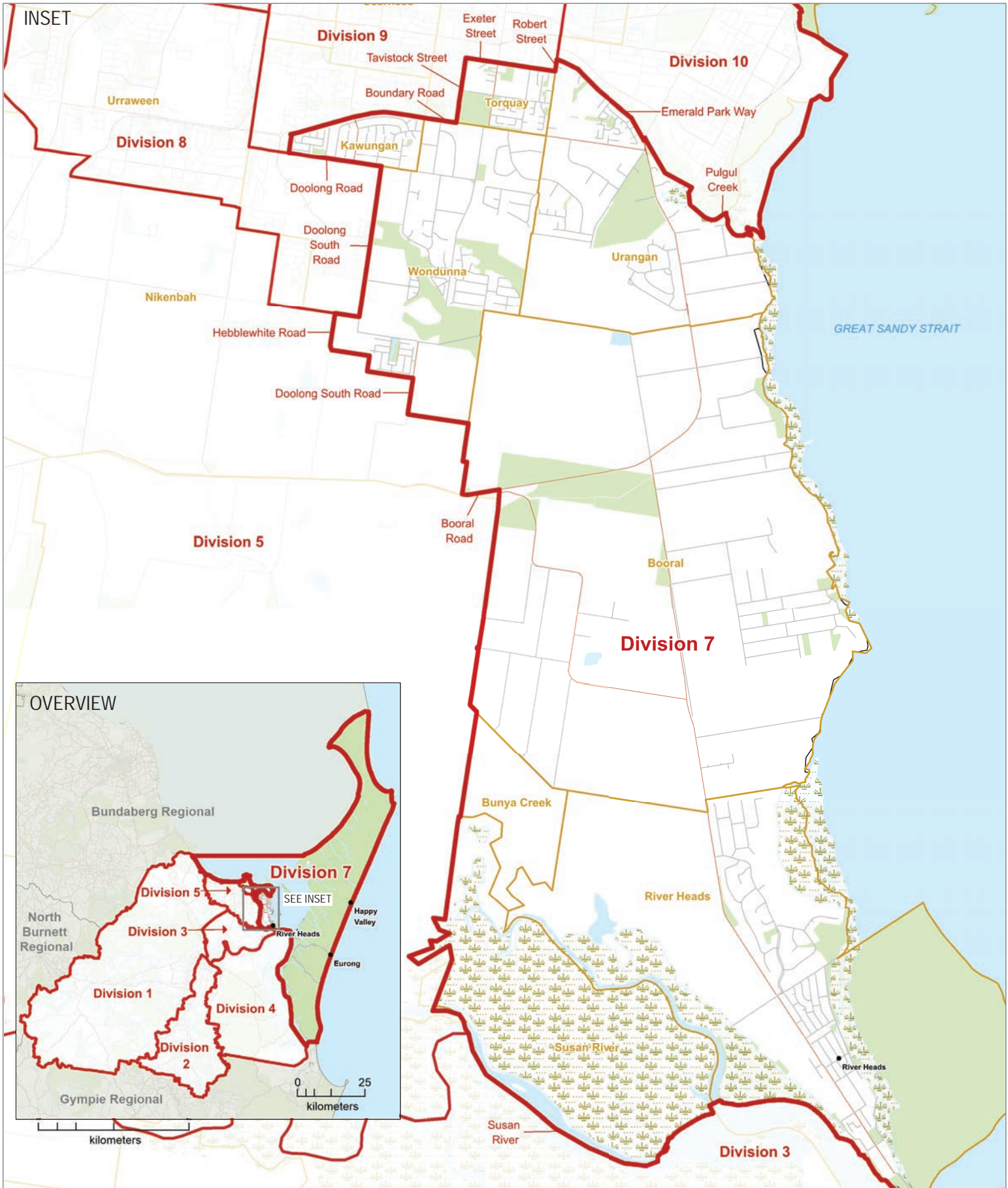


This product was created using datasets from various authoritative sources, and is intended as a guide only to display proposed divisional boundaries.

The digital GIS data is available FREE to download from Queensland Spatial Catalogue or Qspatial, at <http://qds.spatialinformation.qld.gov.au>

© The State of Queensland - 2019 (Department of Natural Resources, Mines and Energy)
© Electoral Commission of Queensland 2019
Creative Commons (CC BY)





2019
Local Government Area
Divisional Boundary Review

PROPOSED DIVISIONAL BOUNDARIES
FRASER COAST REGIONAL
Division 7



Location Map
 Division 7



LEGEND

- Proposed Division Boundary
- Proposed Adjacent Division
- Locality Boundary
- Adjacent Council
- Reserve, Parkland
- Waterbody
- Railway
- Main Road
- Wetland

This product was created using datasets from various authoritative sources, and is intended as a guide only to display proposed divisional boundaries.

The digital GIS data is available FREE to download from Queensland Spatial Catalogue, or Qspatial, at <http://qldspatial.information.qld.gov.au>

© The State of Queensland - 2019 (Department of Natural Resources, Mines and Energy)
 © Electoral Commission of Queensland 2019 Creative Commons (CC BY)

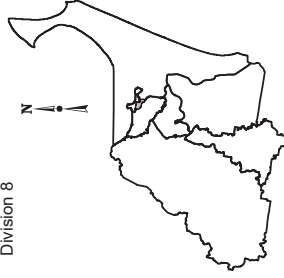
PROPOSED DIVISIONAL
BOUNDARIES

FRASER COAST REGIONAL
Division 8

LEGEND

- Proposed Division Boundary
- Proposed Adjacent Division
- Locality Boundary
- Adjacent Council
- Reserve, Parkland
- Waterbody
- Railway
- Main Road
- Welland

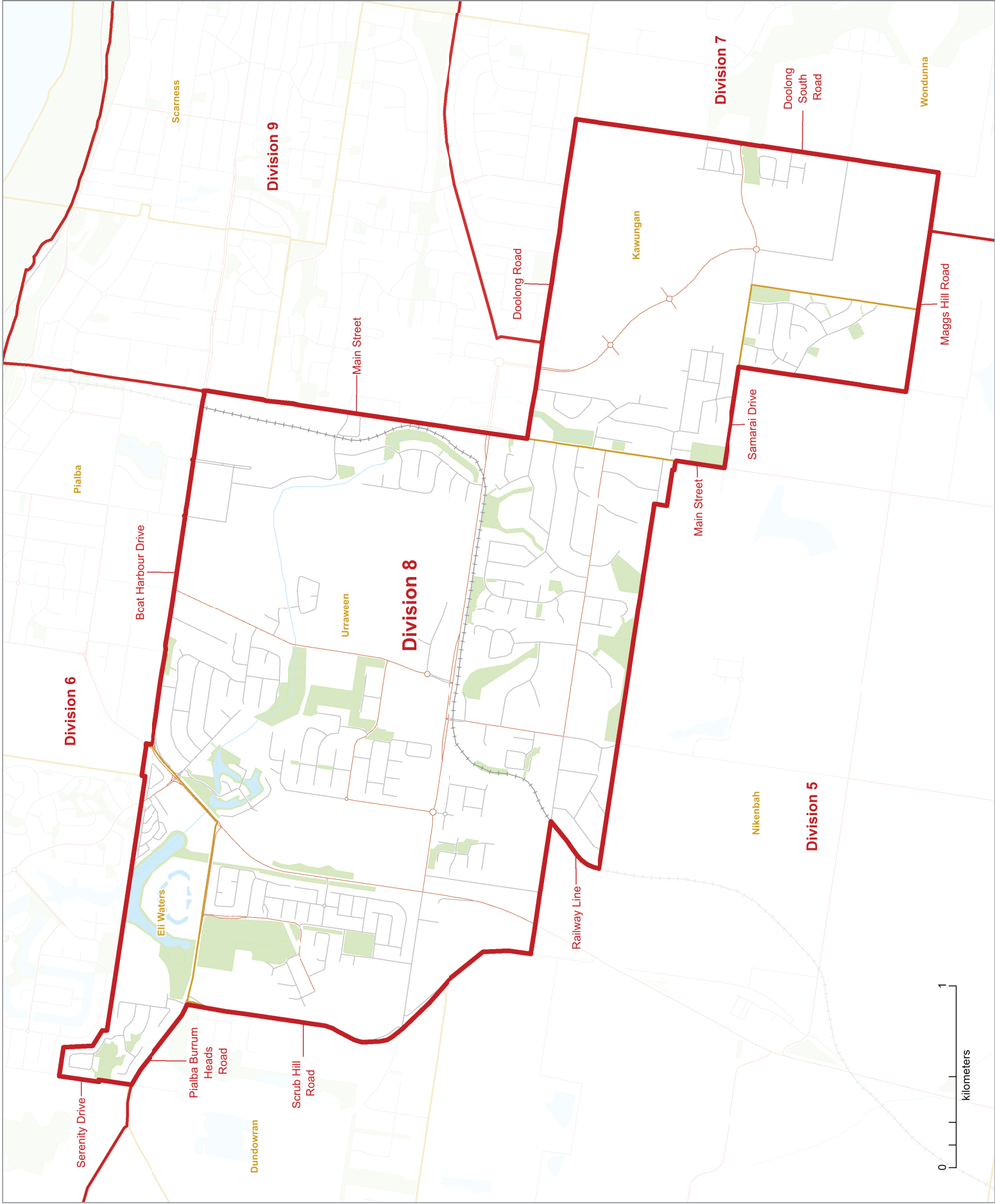
Location Map
Division 8



This product was created using datasets from various authoritative sources, and is intended as a guide only to display proposed divisional boundaries.

The digital GIS data is available FREE to download from Queensland Spatial Catalogue or Qspatial, at <http://qdsportal.information.qld.gov.au>

© The State of Queensland - 2019 (Department of Natural Resources, Mines and Energy)
© Electoral Commission of Queensland 2019
Creative Commons (CC BY)



PROPOSED DIVISIONAL BOUNDARIES

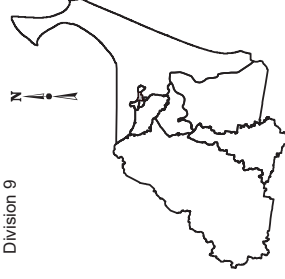
FRASER COAST REGIONAL

Division 9

LEGEND

- Proposed Division Boundary
- Proposed Adjacent Division
- Locality Boundary
- Adjacent Council
- Reserve, Parkland
- Waterbody
- Railway
- Main Road
- Welland

Location Map
Division 9



This product was created using datasets from various authoritative sources, and is intended as a guide only to display proposed divisional boundaries.

The digital GIS data is available FREE to download from Queensland Spatial Catalogue or Qspatial, at <http://qdsportal.information.qld.gov.au>

© The State of Queensland - 2019 (Department of Natural Resources, Mines and Energy)
© Electoral Commission of Queensland 2019
Creative Commons (CC BY)

HERVEY BAY

Division 6

Pialba

Scarness

Main Street

Division 9

Torquay

Robert Street

Division 10

Exeter Street

Tavistock Street

Boundary Road

Doolong Road

Division 8

Division 7

0 0.5
kilometers

HERVEY BAY

Division 9

Robert Street

Torquay

Great Sandy Region
Botanic Gardens
Urangan

Urangan

Division 10

Emerald Park Way

Garden Drive Park

Pulgul Street Park

Foreshore Reserve

GREAT SANDY STRAIT

Division 7

Pulgul Creek

0 0.5
kilometers

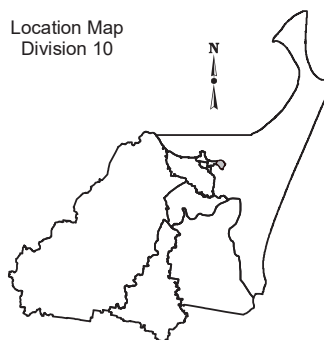
**2019
Local Government Area
Divisional Boundary Review**

PROPOSED DIVISIONAL BOUNDARIES

**FRASER COAST REGIONAL
Division 10**



Location Map
Division 10



LEGEND

	Proposed Division Boundary		Reserve, Parkland
	Proposed Adjacent Division		Waterbody
	Locality Boundary		Railway
	Adjacent Council		Main Road
			Wetland

This product was created using datasets from various authoritative sources, and is intended as a guide only to display proposed divisional boundaries.

The digital GIS data is available FREE to download from Queensland Spatial Catalogue, or Qspatial, at <http://qldspatial.information.qld.gov.au>

© The State of Queensland - 2019 (Department of Natural Resources, Mines and Energy)
© Electoral Commission of Queensland 2019 Creative Commons (CC BY)

LOCAL GOVERNMENT CHANGE COMMISSION

W: www.ecq.qld.gov.au

E: LGCCsubmissions@ecq.qld.gov.au

T: 1300 881 665

P: Local Government Change Commission
GPO Box 1393
BRISBANE QLD 4001