



LOCAL GOVERNMENT CHANGE COMMISSION

2015

REDIVISION OF ELECTORAL DIVISIONS WITHIN SCENIC RIM REGIONAL COUNCIL

FINAL DETERMINATION

SEPTEMBER 2015



LOCAL GOVERNMENT CHANGE COMMISSION

2015

REDIVISION OF ELECTORAL DIVISIONS WITHIN SCENIC RIM REGIONAL COUNCIL

FINAL DETERMINATION

SEPTEMBER 2015

Electoral Commission of Queensland
Level 6, 160 Mary Street, Brisbane QLD 4000
GPO Box 1393, Brisbane QLD 4001

Telephone: 1300 881 665
Facsimile: (07) 3036 5776
Website: www.ecq.qld.gov.au

TABLE OF CONTENTS

FOREWORD	3
CHAPTER 1 – INTRODUCTION	4
TERMS OF REFERENCE	4
LEGISLATIVE PROVISIONS	4
DETERMINING THE QUOTA.....	5
<i>Technical Process</i>	5
Table 1 – Enrolment, Projections and Averages.....	5
CHAPTER 2 – THE REVIEW PROCESS	6
CHAPTER 3 – FINAL DETERMINATION.....	7
CURRENT ENROLMENT.....	7
Table 2 – Summary of Enrolments for the Current Electoral Divisions.....	7
PROPOSED DETERMINATION.....	7
OBJECTION TO THE PROPOSED DETERMINATION.....	8
FINAL DETERMINATION.....	8
Table 3 – Summary of Enrolments for the Final Electoral Divisions	8
APPENDIX A Previous Electoral Divisions	
APPENDIX B Minister’s Referral and Council’s Submission	
APPENDIX C Invitation for Written Submissions	
APPENDIX D Change Commission’s Proposed Determination	
APPENDIX E Invitation for Objections to the Proposal	
Comments to the Proposed Determination	
APPENDIX F Maps of Council's Electoral Divisions for 2016 Elections	

FOREWORD

This report outlines the Final Determination for the redivision of electoral divisions within Scenic Rim Regional Council.

The *Local Government Act 2009 (Qld)* (the Act) provides for a Local Government Change Commission (the Change Commission) to conduct the assessment phase of the boundary change process. The Act also provides for the Change Commission to be the appointed independent assessment body for boundary changes within Scenic Rim Regional Council.

The Change Commission is made up of the Electoral Commissioner or a combination of the Electoral Commissioner, the Deputy Electoral Commissioner and a casual Commissioner. The Change Commission for this review is made up of:

- Mr Walter van der Merwe, Electoral Commissioner; and
- Mr Gregory Rowe, casual Commissioner (appointed on 13 November 2015 for three years by the Governor in Council).

On 2 April 2015 a reference was made to the Change Commission by the Minister responsible for Local Government (see Appendix B).

For electoral purposes Scenic Rim Regional Council is divided into six electoral divisions. This report outlines the Change Commission's Final Determination for the boundaries of the divisions. It also sets out the reasons for the Change Commission's determination. The Change Commission's proposals were adopted unanimously at a meeting held on Friday 18 August 2015, both Commissioners were present.

Chapter 1 of this report provides an introduction to the Change Commission's requirements for undertaking an assessment of the internal boundaries. Chapter 2 presents a summary of the review process that was undertaken. A more detailed outline of the Final Determination appears in Chapter 3. Maps of the final boundary changes are in Appendix F.

In accordance with the Act the Change Commission may conduct the review in any way that it considers appropriate. To this end, the Change Commission provided data on the current boundaries and enrolment statistics as sourced from the Australian Electoral Commission (AEC) as at 23 February 2015. The Change Commission called for both suggestions and objections to the proposed boundary changes. One submission was received during the call for objections period.

The Scenic Rim Regional Council provided a written submission and maps prior to the call for suggestions (see Appendix B). The Change Commission is appreciative of the Council for its submission and correspondence throughout this process.

The Commissioners would also like to acknowledge the valuable assistance and expertise provided by the executive, mapping and support staff of the Electoral Commission Queensland including Dermot Tiernan, Zonka Petrusevska, Kurt Bonair, Moira McNeil, Yan Liu, Lesley Trost and Elise Arklay, and extend their thanks to the Queensland Treasury for the population projection figures.

Walter van der Merwe and Gregory Rowe
Change Commission

CHAPTER 1 – INTRODUCTION

TERMS OF REFERENCE

On 2 April 2015 the Change Commission received a reference to review the electoral arrangements of the Scenic Rim Regional Council from the Honourable Jackie Trad MP, Minister responsible for Local Government (see Appendix B).

LEGISLATIVE PROVISIONS

The Scenic Rim Regional Council has 26,541 electors (as at 23 February 2015). The Council is divided into six electoral divisions. Each division elects one Councillor while the Mayor is elected by all voters in the local government area. Elections are set by date to be held every four years as prescribed by the *Local Government Electoral Act 2011*. The next Scenic Rim Regional Council election is scheduled for 19 March 2016.

The *Local Government Act 2009 (Qld)* (the Act) allows for changes to divisions in local government areas to ensure that each division has a reasonable proportion of electors. Pursuant to Section 22 of the Act, the Change Commission for this review was constituted by the Electoral Commissioner and the casual Commissioner.

Section 15 of the Act requires the Scenic Rim Regional Council to review whether each of the divisions has a reasonable proportion of electors and give the Electoral Commissioner and the Minister a written notice of the results of the review no later than 1 March in the year that is one year before the year of the quadrennial elections. The date referred to in this report is known as the information date. The Council reported that Division 2 did not meet the reasonable proportion of elector's requirements on 27 February 2015.

Under the provisions of the Section 19 of the Act, in reviewing the division of a local government area the Change Commission is required to consider:

- 1) The Change Commission is responsible for assessing whether a proposed local government change is in the public interest;
- 2) In doing so, the Change Commission must consider:
 - a. whether the proposed local government change is consistent with a Local Government Act; and
 - b. the views of the Minister about the proposed local government change; and
 - c. any other matters prescribed under a regulation.

The Change Commission is required to release the outcomes of its assessment to the public and the reasoning behind the results, by publishing its findings in a newspaper circulating generally in the local government area, in the Government Gazette and on the Electoral Commission's website. The Change Commission must also give the results of its assessment to the Minister for Local Government for implementation. The method of implementation is by way of regulation by the Governor in Council.

A decision of the Change Commission is not subject to appeal.

DETERMINING THE QUOTA

The Act specifies binding quota requirements. A quota is determined by dividing the total number of electors in the local government area by the number of councillors (other than the mayor), plus or minus:

- for a council with more than 10,000 electors – 10%; or
- for any other council – 20%.

Section 15 of the Act allows for a margin of 10 per cent for Scenic Rim Regional Council to be adopted in relation to determining a reasonable proportion of electors. For ease of understanding the proportion of electors and the margin will be referred to in this document as “quota”.

The Change Commission, when formulating its proposals must ensure that each division complies with the quota as near as practicable to the election date. There is no latitude allowed for the Change Commission to determine electoral boundaries that do not comply with these requirements.

Technical Process

Key to the redivision is elector count information sourced from the electoral roll organised around the smallest unit for the release of Census data known as a Statistical Area (SA1) utilised by the Australian Bureau of Statistics.

The AEC, which maintains the electoral roll for Queensland pursuant to a joint roll agreement, provided statistics from the roll on numbers of electors in each SA1 in the area of the Scenic Rim Regional Council on 23 February 2015. Projections of population movement were then applied to the SA1s using data provided by Queensland Treasury. Future dates for projections were set at 31 March 2016 (just after the next quadrennial election) and 28 February 2019 (the last opportunity before the information date preceding the March 2020 election).

Table 1 – Enrolment, Projections and Averages

	23 February 2015	31 March 2016	28 February 2019
Number of divisions	6	6	6
Enrolment	26,541	27,051	28,965
Average electors per division	4,424	4,509	4,828
Permitted Maximum Number (+10%) per division	4,866	4,959	5,310
Permitted Minimum Number (-10%) per division	3,981	4,058	4,345

CHAPTER 2 – THE REVIEW PROCESS

The Scenic Rim Regional Council is divided into six single-member divisions. By letter dated 27 February 2015, the Council advised the Minister that Division 2 was out of tolerance and that Division 5 was close to exceeding the acceptable quota limit.

Based on 23 February 2015 enrolment data, the Change Commission calculated a quota (average enrolment) of 4,424, with a minimum of 3,981 (-10%) and an upper limit of 4,866 (+10%) electors permissible in each district.

Accompanying its notice to the Minister, the Scenic Rim Regional Council lodged a proposed solution that involved changes to all six divisions within Council. Relevant correspondence is attached at Appendix B.

In accordance with Section 19 (4) of the Act, a public notice was published on the 8 May 2015 inviting suggestions from interested persons. The advertisement (see Appendix C) noted that received submissions would be made available for public inspection. Suggestions closed on 29 May 2015. No suggestions were received.

A second phase of consultation began on the 24 July 2015 following an advertised call for objections to the Change Commission's Proposed Determination (see Appendix E). Objections closed on the 14 August 2015. One comment was received from the Councillor of Division 4, raising issues that were outside the purview of this review process. No other comments were received.

In reaching its Final Determination the Change Commission took into account Council's submissions, as well as the projected future changes in electoral numbers provided by the Queensland Treasury.

Wherever possible, the Change Commission endeavours to devise boundaries that not only meet current quota requirements but are sustainable for at least two quadrennial elections and are in the public interest. The nature and extent of population growth or decline may render this impossible in some cases and the Change Commission recognises the possibility that boundaries may need to be reviewed again in readiness for the 2020 quadrennial elections.

CHAPTER 3 – FINAL DETERMINATION

CURRENT ENROLMENT

The Scenic Rim Regional Council has a total of 26,541 enrolled electors spread across six divisions, with an average number of 4,424 electors per division. Applying the plus or minus tolerance of 10 per cent allowed under the Act, the minimum number of electors required for each division is 3,981, with a maximum of 4,866.

As can be observed in Table 2, Division 2 is currently out of quota and is over the maximum allowable number of electors. Division 5 is also very close to exceeding the quota tolerance. To address this imbalance, both Council and the Change Commission needed to alter the divisional boundaries to balance elector numbers across all six divisions. As part of its decision making process, the Change Commission has attempted to cater for future demographic trends, to keep all of the divisions within the Scenic Rim Regional Council in quota in the lead up to the 2020 quadrennial election.

Table 2 – Summary of Enrolments for the Current Electoral Divisions

Division Name	Enrolment as at 23/02/2015	(%) Deviation from Quota	Projected Enrolment as at 31/03/2016	(%) Deviation from Quota	Projected Enrolment as at 28/02/2019	(%) Deviation from Quota
Division 1	4,184	-5.41	4,197	-6.91	4,215	-12.69
Division 2	4,951	+11.92	5,024	+11.43	5,334	+10.49
Division 3	4,485	+1.39	4,591	+1.83	4,967	+2.89
Division 4	4,307	-2.63	4,445	-1.41	5,127	+6.2
Division 5	4,009	-9.37	4,085	-9.39	4,314	-10.64
Division 6	4,605	+4.1	4,709	+4.45	5,008	+3.74

PROPOSED DETERMINATION

The Change Commission received no response to its call for suggestions in early May 2015. Therefore the Change Commission formulated its Proposed Determination based on its own modelling and the proposal put forward by the Scenic Rim Regional Council.

The Change Commission adopted the Council's proposal in its entirety, finding that it had used sound mapping, consultation and elector figures that aligned with the Change Commission's own information (see Appendix D).

OBJECTION TO THE PROPOSED DETERMINATION

One comment was received from the Councillor from Division 4 during the call for objections consultation period (see Appendix E). The comment related to an issue of road accessibility, but referred to a road affected by external council boundaries that were outside the scope of this internal divisional review. No other public comment was received.

FINAL DETERMINATION

The Change Commission was satisfied that its proposal was well-reasoned and satisfied the need to bring the divisions of the Scenic Rim Regional Council into quota, while maintaining communities of interest.

The Change Commission adopted the changes in the Proposed Determination, formulated from the Council's proposal, as the new divisional boundaries. Projected growth figures suggest these changes are likely to keep all divisions within quota and are expected to prevent the need for future boundary changes prior to the 2020 local government elections.

The Change Commission's final recommendation to the Governor in Council is as follows:

- ***That for the purposes of the 2016 local government elections, the Scenic Rim Regional Council be redivided into six divisions as shown on the maps contained in Appendix F of this report.***

The Change Commission notes that implementation of this recommendation will give rise to the following divisional elector numbers:

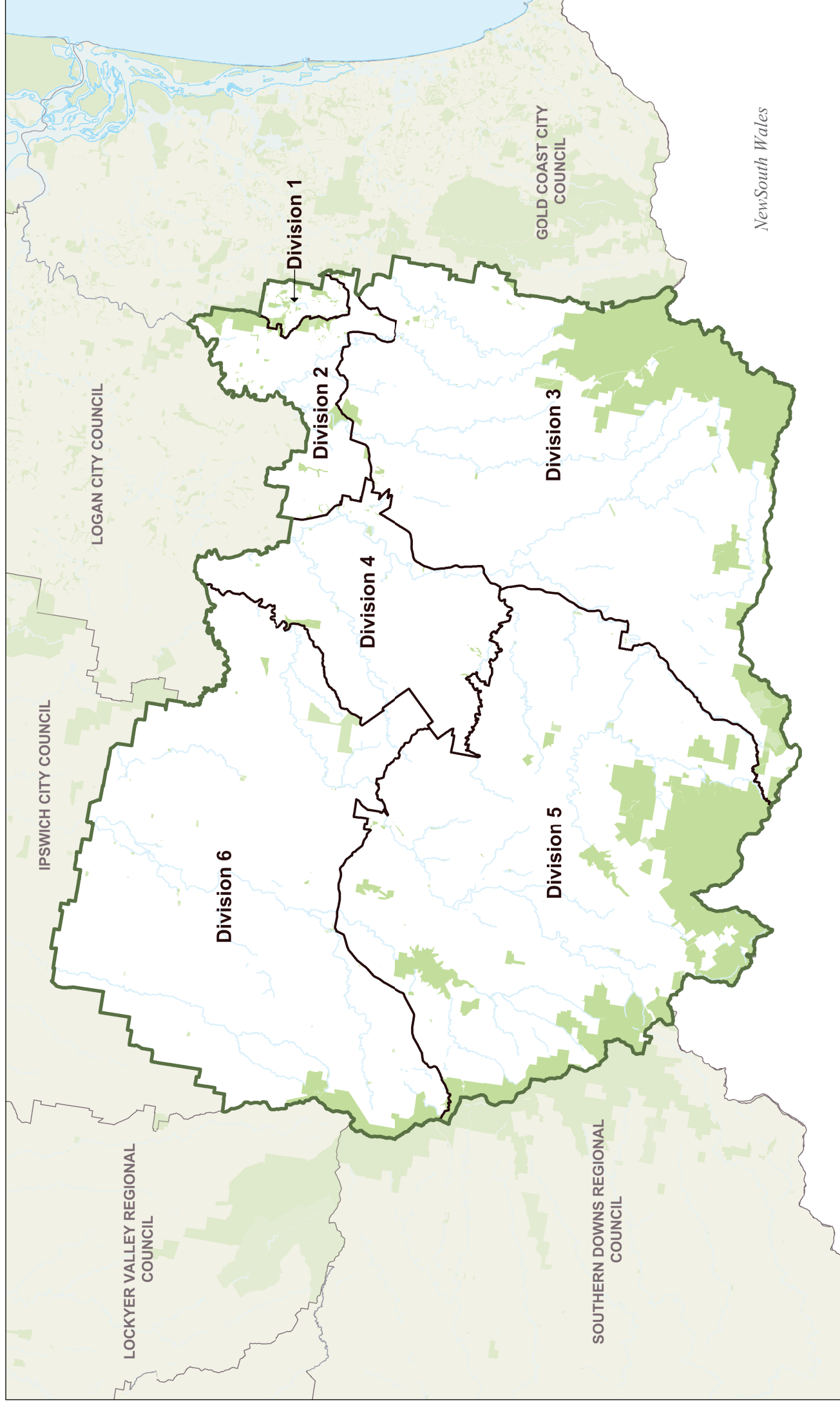
Table 3 – Summary of Enrolments for the Final Electoral Divisions

Division Name	Enrolment as at 23/02/2015	(%) Deviation from Quota	Projected Enrolment as at 31/03/2016	(%) Deviation from Quota	Projected Enrolment as at 28/02/2019	(%) Deviation from Quota
Division 1	4,511	+1.98	4,524	+0.34	4,542	-5.91
Division 2	4,624	+4.53	4,697	+4.18	5,007	+3.72
Division 3	4,493	+1.57	4,599	+2.01	4,975	+3.06
Division 4	4,323	-2.27	4,461	-1.05	5,143	+6.54
Division 5	4,170	-5.73	4,247	-5.8	4,503	-6.72
Division 6	4,420	-0.08	4,523	+0.32	4,795	-0.67

APPENDIX A

Previous Electoral Divisions

EXISTING ELECTORAL WARDS



APPENDIX B

**Minister's Referral
Council's Submission**



Hon Jackie Trad MP

Deputy Premier

Minister for Transport, Minister for Infrastructure,
Local Government and Planning and Minister for Trade

Our ref: MBN15/49

- 2 APR 2015

Mr Walter van der Merwe
Electoral Commissioner
Electoral Commission Queensland
GPO Box 1393
BRISBANE QLD 4001

Dear Mr van der Merwe

I am writing to you in relation to local government electoral reviews which have been undertaken in preparation for the 2016 local government elections.

I have recently received proposals from 14 local governments seeking a review of their existing electoral arrangements.

The proposals include submissions in relation to the internal divisional boundary distributions where it has been determined that the divisional boundaries are out-of-quota. In addition, four of those local governments have submitted additional proposals for voluntary changes to their existing arrangements.

I note that, under section 19 of *the Local Government Act 2009* (the Act), the Commission must consider whether the local government change is consistent with the Act and must consider my views on any proposed changes.

Having examined each of their proposals, I consider it appropriate to refer each matter to you for independent assessment and determination by the Local Government Change Commission.

For your reference, I have enclosed a summary of each divided local government's quota review, a copy of each proposal referred to you for review and additional supporting information to assist with your review.

Level 12 Executive Building
100 George Street Brisbane
PO Box 15009 City East
Queensland 4002 Australia
Telephone +61 7 3719 7100
Email deputy.premier@ministerial.qld.gov.au

If you require any further information, please contact Mr Max Barrie, Director, Program Implementation and Review on (07) 3452 6704 or max.barrie@dlgcr.qld.gov.au, who will be pleased to assist.

Yours sincerely



**JACKIE TRAD MP
DEPUTY PREMIER**

**Minister for Transport, Minister for Infrastructure,
Local Government and Planning and Minister for Trade**

Enc (15)

DIVIDED LOCAL GOVERNMENTS – QUOTAS AND PROPOSED VOLUNTARY CHANGES

<u>Local Government</u>	<u>Results of Review</u>	<u>No. of Divisions Out of Quota</u>	<u>Referral to Local Government Change Commission</u>
Banana Shire Council	Out-of-quota	2	Refer quota review
Bundaberg Regional Council	Out-of-quota	2	Refer: <ul style="list-style-type: none"> • quota review • proposal to abolish divisions • proposal to incorporate unallocated area into local government area
Cairns Regional Council	Out-of-quota	1	Refer quota review
Cassowary Coast Regional Council	In quota	0	No referral required
Fraser Coast Regional Council	Out-of-quota	2	Refer quota review
Gold Coast City Council	In quota	0	No referral required
Gympie Regional Council	In quota	0	No referral required
Ipswich City Council	Out-of-quota	5	Refer quota review
Isaac Regional Council	Out-of-quota	2	Refer quota review
Logan City Council	Out-of-quota	1	Refer quota review
Moreton Bay Regional Council	Out-of-quota	2	Refer quota review
North Burnett Regional Council	In quota	0	No referral required
Redland City Council	Out-of-quota	1 (out) and 1 (predicted)	Refer both quota reviews
Rockhampton Regional Council	Out-of-quota	2	Refer: <ul style="list-style-type: none"> • quota review • proposal to renumber divisions
Scenic Rim Regional Council	Out-of-quota	1 (out) and 1 (predicted)	Refer both quota reviews
South Burnett Regional Council	In quota	0	No referral required
Sunshine Coast Regional Council	Out-of-quota	2	Refer quota review
Tablelands Regional Council	Out-of-quota	3	Internal boundary review plus additional voluntary change proposal to increase councillor numbers already referred to Change Commission on 16 December 2014.
Townsville City Council	Out-of-quota	2	Refer quota review
Whitsunday Regional Council	Out-of-quota	1	Refer quota review

When contacting Council please ask for
Doug Pennell
Tel: 07 55405400
Ref: DJP
13/02/001

RECEIVED

02 MAR 2015



82 Brisbane Street
PO Box 25
BEAUDESERT QLD 4285

Tel 07 5540 5111
Fax 07 5540 5103

mail@scenicrim.qld.gov.au
www.scenicrim.qld.gov.au

ABN: 45 596 234 931

27 February 2015

Hon Jackie Trad MP
Deputy Premier, Minister for Transport, Minister for Infrastructure,
Local Government and Planning and Minister for Trade
PO Box 15009
CITY EAST QLD 4002

Dear Minister

Review of Electoral Arrangements

In accordance with s16 of the *Local Government Act 2009*, Council must no later than 1 March in the year before the year of the quadrennial elections—

- (a) review whether each of its divisions has a reasonable proportion of electors; and
- (b) give the electoral commissioner and the Minister (for Local Government) written notice of the results of the review.

I must advise that data supplied by the Electoral Commission of Queensland shows that as at 23 February 2015:

- a) Division 2 enrolments exceed the maximum number permitted by the 'reasonable proportion of electors' provisions;
and
- b) Division 5 enrolments are close to falling below the minimum number required to comply with the 'reasonable proportion of electors' provisions.

In anticipation of these outcomes, Council has conducted a voluntary review of its divisional boundaries and has now prepared the attached submission for your consideration.

Please do not hesitate to contact this office if you require clarification of the proposed changes.

Yours faithfully

A handwritten signature in dark ink, appearing to read "Craig Barke", written over a light blue horizontal line.

Craig Barke
CHIEF EXECUTIVE OFFICER

Submission for Voluntary Local Government Change

Background

The internal boundaries of the six (6) divisions of the Scenic Rim Regional Council were established in 2008 under the Local Government Reform process and have not been amended since that time.

Section 15 of the *Local Government Act 2009* (the Act) provides that each division of a local government area must have a reasonable proportion of electors. For local governments with in excess of 10,000 registered enrolments, the Act requires the number of enrolments in each division to be within a tolerance of 10% above or below the average for all divisions.

Section 16 of the Act provides that a local government must, no later than 1 March in the year before the year of the quadrennial elections—

- (a) review whether each of its divisions has a reasonable proportion of electors; and
- (b) give the electoral commissioner and the Minister (for Local Government) written notice of the results of the review.

Section 18 of the Act provides that only the Minister may propose a local government change to the Local Government Change Commission. As such a local government which voluntarily reviews its electoral arrangements cannot submit their proposal directly to the Commission. Advice has been received that any proposals by local governments for a local government change at the 2016 quadrennial elections must be received by the Minister no later than 1 March 2015.

Report

The following table shows enrolment numbers supplied by the Electoral Commission of Queensland as at 23 February 2015 for the six (6) Divisions of Scenic Rim Regional Council relative to the reasonable proportion of elector requirements:

Division	Enrolment	Variance from average (4423)	
		Count	%
1	4184	239-	5.44-
2	4960	537+	12.14+
3	4476	53+	1.12+
4	4307	116-	2.62-
5	4009	414-	9.36-
6	4605	182+	4.11+
Total	26541		

Significantly the above statistics show that Division 2 enrolments exceed the maximum number permitted by the 'reasonable proportion of electors' provisions and Division 5 enrolments are close to falling below the minimum number required to comply with the 'reasonable proportion of electors' provisions.

As a mandatory boundary change is required to reduce the number of enrolments within Division 2, it is proposed that the boundary of Division 5 be also moved to achieve a more even distribution of enrolments across all divisions. Based on enrolments within Census Collector Districts, the following changes are recommended:

Recommendation 1

Transfer the area hatched on Attachment 1 to this report from Division 2 to Division 1.

Enrolments within Division 2 are currently 12.14% above the average for the Region. This exceeds the maximum allowable tolerance of 10%. As enrolments within the adjacent Division 1 are currently 5.44% below the average, it is appropriate to reduce the Division 2 enrolments by transferring part of its area to Division 1.

The area recommended for transfer comprises that part of Division 2 on the eastern side of Tamborine Mountain north of Golf Course Road. That road (and its extension to the Region's eastern boundary) would provide an easily recognisable boundary between the two divisions.

Enrolments within this area at 23 February 2015 are estimated as follows:

SA1 Area	Enrolments
3124206	320*
3124224	7*
	327

* Extracted from SA1 data 23 February 2015 supplied by ECQ

Recommendation 2

Transfer the areas hatched on Attachment 2 to this report from Division 6 to Division 5.

Enrolments within Division 5 area are currently 9.36% below the average for the Region. Whilst this is currently within the allowable 10% tolerance, it is proposed that action be taken to reduce the extent of variance. As enrolments within the adjoining Division 6 are currently 4.11% above the average, it is appropriate to increase Division 5 enrolments by transferring area from Division 6.

The areas proposed for transfer are described as follows:

- a) that part of Division 6 within the area bounded by Red Bridge Road, Pocock Road, Hoya Road, Coronation Drive and Boonah-Fassifern Road.
- b) the area bounded by Old Rifle Range Road, Allandale Road, Church Street, Ley Street, Elliot Road and Ipswich-Boonah Road

Inclusion of those areas in Division 5 would address the current imbalance and provide an easily recognisable boundary between the two divisions.

Enrolments within this area at 23 February 2015 are estimated as follows:

SA1 Area	Enrolments
3127708	43*
3127707	112*
3127715	20**
3127703	5**
	180

* Extracted from SA1 data 23 February 2015 supplied by ECQ

** Estimate only based on number of residences

Council has also reviewed the general alignment of its Divisional boundaries and recommends the following additional changes:

Recommendation 3

Transfer small segments hatched on Attachment 3 bounded by the interstate railway and Mount Lindesay Highway as follows:

- the section between Kooralbyn Road and the rail underpass at Innisplain from Division 3 to Division 5; and
- the section between the rail underpass at Innisplain and Running Creek Road from Division 5 to Division 3

There is current inconsistency in the western boundary of Division 3 which follows:

- Mount Lindesay Highway from Beaudesert south to Kooralbyn Road;
- The interstate train line from Kooralbyn Road to Running Creek Road; and
- Mount Lindesay Highway from Running Creek Road to the NSW border

In the interests of consistency and ensuring that boundaries are logical and known by residents and Councillors, it is proposed that the boundary should follow Mount Lindesay Highway for its entire length. Aerial photography suggests that the net effect of this transfer would be to move about 4 residences (containing an estimated 8 enrolments) from Division 3 to Division 5.

The area comprises small segments of SA1 areas 3130527, 3130527 and 3130528 each of which are currently split between Divisions 3 and 5. Enrolments within these segments at 23 February 2015 are estimated as follows:

	Residences	Enrolments*
Area transferred from Division 3 to Division 5	12	24
Area transferred from Division 5 to Division 3	8	16
Net Enrolment Change		8

* Estimate only based on 2 enrolments per residence

Recommendation 4

Transfer the area hatched on Attachment 4 from Division 6 to Division 4.

Following the construction of Wyaralong Dam during 2010-2011, part of Division 6 to the north Teviot Brook is now isolated from the balance of Division 6 by both the impoundment of that dam and inaccessible terrain to the west. This area is sparsely populated and it is considered that the interests of that area would be better served by its transfer to the adjacent Division 4 from which it is accessed.

The subject area comprises part of SA1 area 3127729 which is currently split between Divisions 4 and 6. The segment of 3127729 currently within Division 6 contained 27 enrolments at 23 February 2015 - of which about 20 are estimated to be within the area proposed for transfer.

Summary

The overall effect of the changes recommended above is as follows:

	Division 1	Division 2	Division 3	Division 4	Division 5	Division 6
Enrolments at 23 February 2015 on current boundaries	4184	4960	4476	4307	4009	4605
Rec 1	327+	327-				
Rec 2					180+	180-
Rec 3			8-		8+	
Rec 4				20+		20-
Enrolments on proposed boundaries	4511	4633	4468	4327	4197	4405
Enrolments within proposed boundaries to average (4423)	88+ (2.00%)	210+ (4.75%)	45+ (1.02%)	96- (2.17%)	226- (5.11%)	18- (0.41%)

Community Consultation

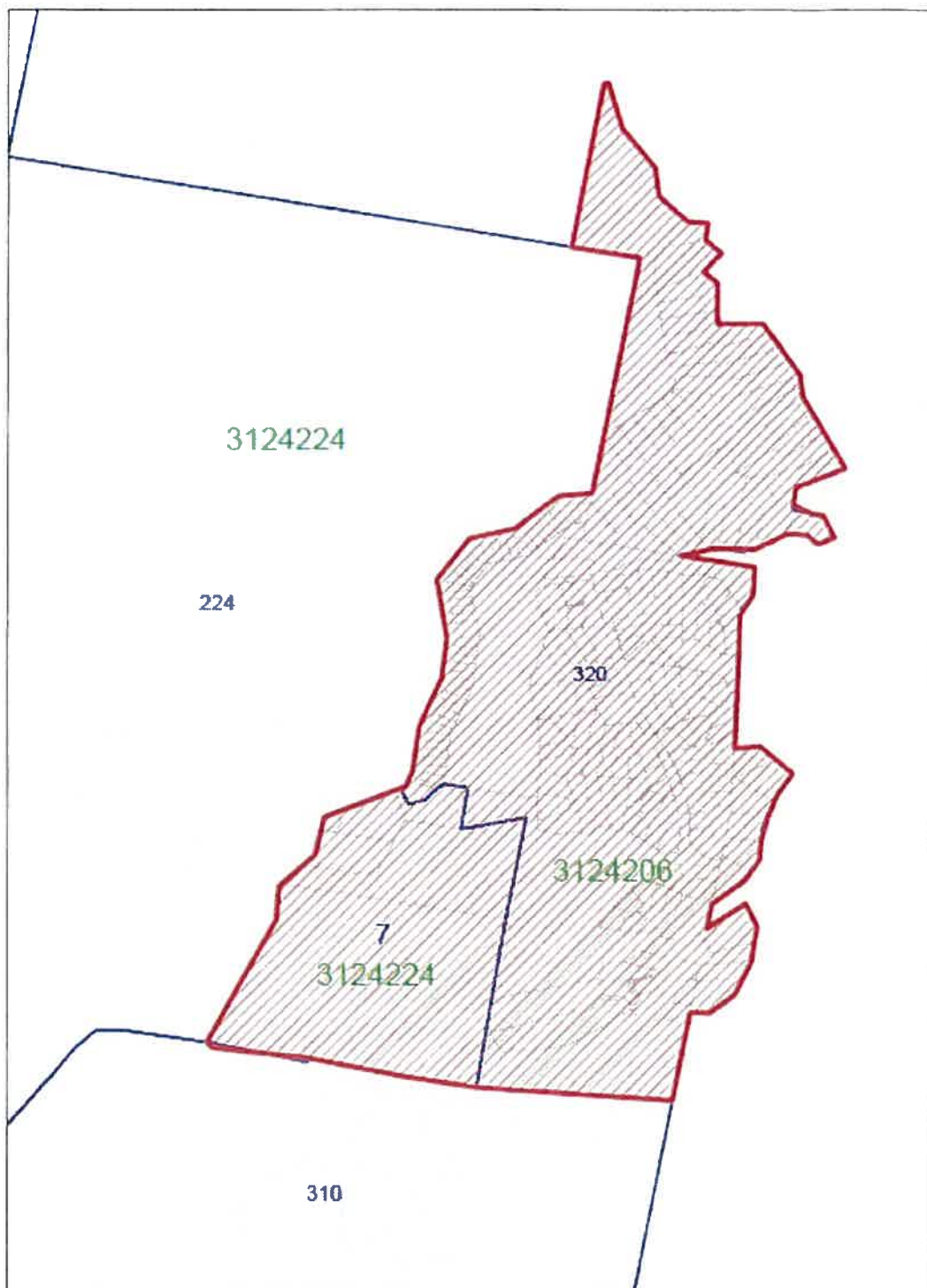
Recommendations 1 to 3 above were endorsed by Council at its meeting of 27 January 2015 and distributed for public comment as follows:

- A Media Release advising of the proposed changes was issued on 27 January 2015 and appeared in The Fassifern Guardian of 29 January 2015 and the Tamborine Mountain News of 3 February 2015.
- An Information Sheet and maps showing the proposed changes and inviting any feedback by 16 February 2015 was placed on display in Council's Customer Service Centres and posted on Council's website on 30 January 2015.
- A news item advising residents of the release of the Information Sheet and where it can be accessed was included in Council's advertisement in the Tamborine Mountain News of 3 February 2015, the Beaudesert Times of 4 February 2015 and The Fassifern Guardian of 4 February 2015.
- On 4 February 2015 Council placed a post on its Facebook page informing readers of the proposal

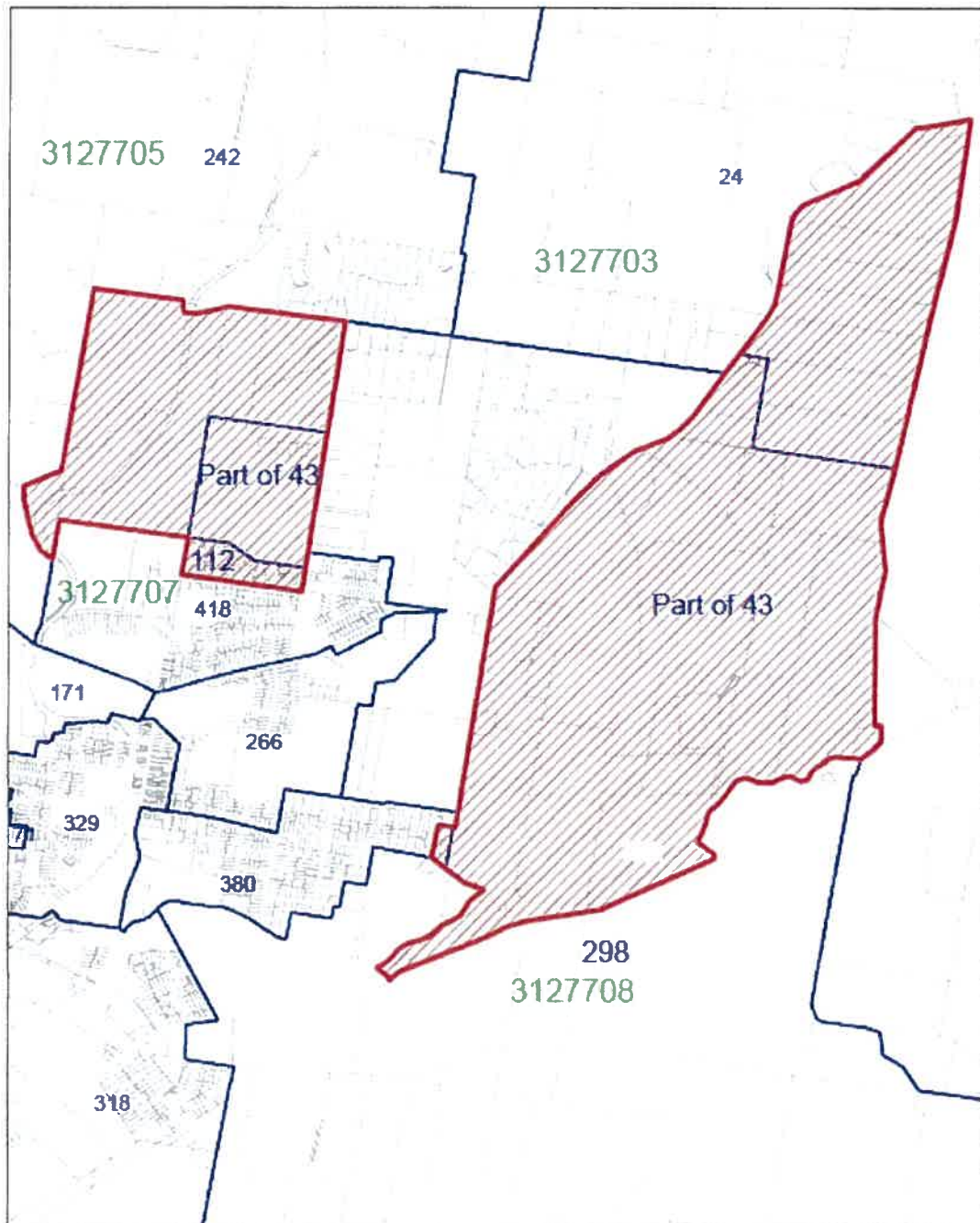
No objections or alternative boundary change proposals were received in response to that consultation process.

Recommendation 4 is an additional change proposed by Council at its meeting of 24 February 2015. It has not been distributed for public comment.

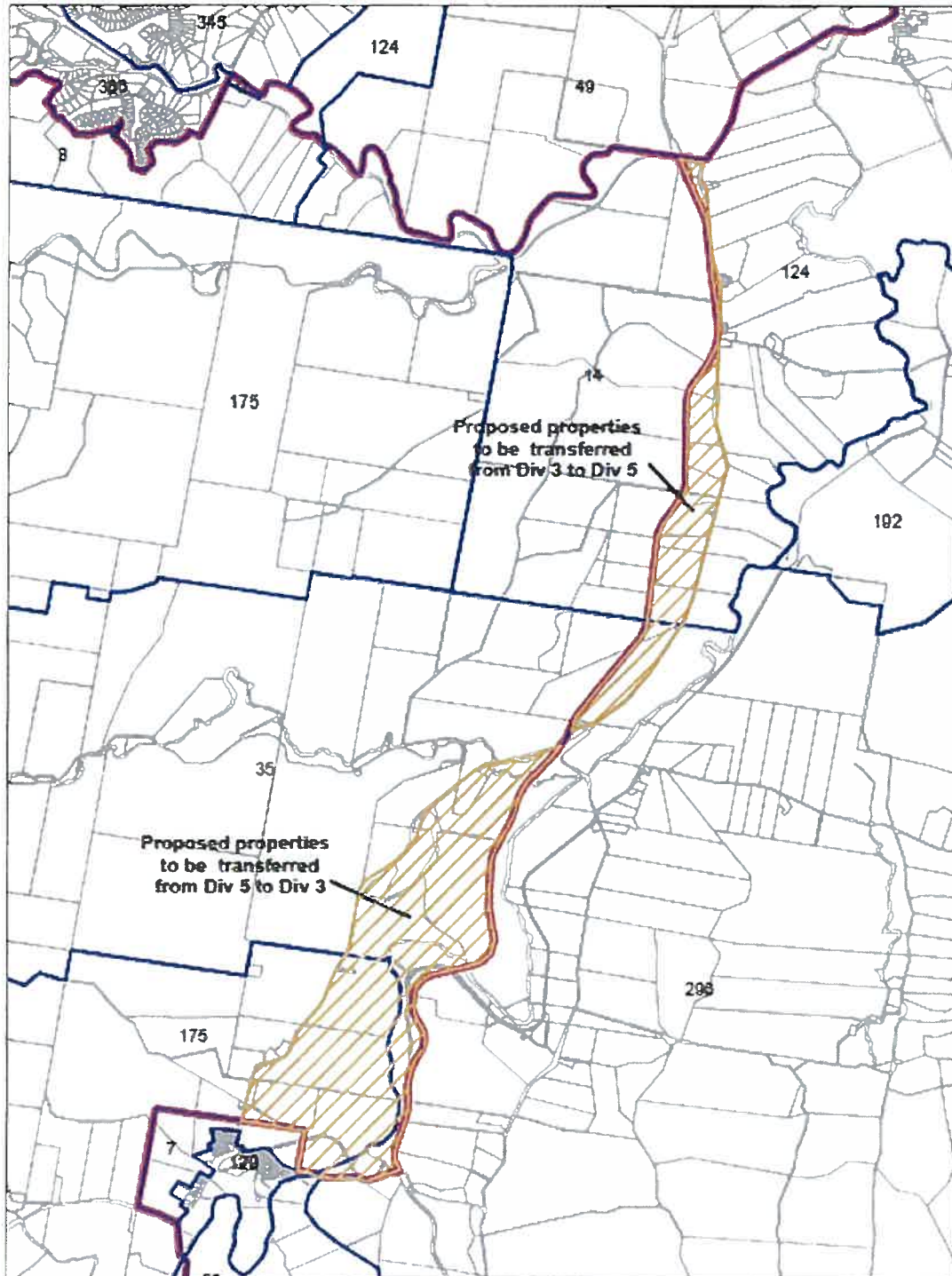
Attachment 1 - Area on eastern side of Tamborine Mountain proposed for transfer from Division 2 to Division 1



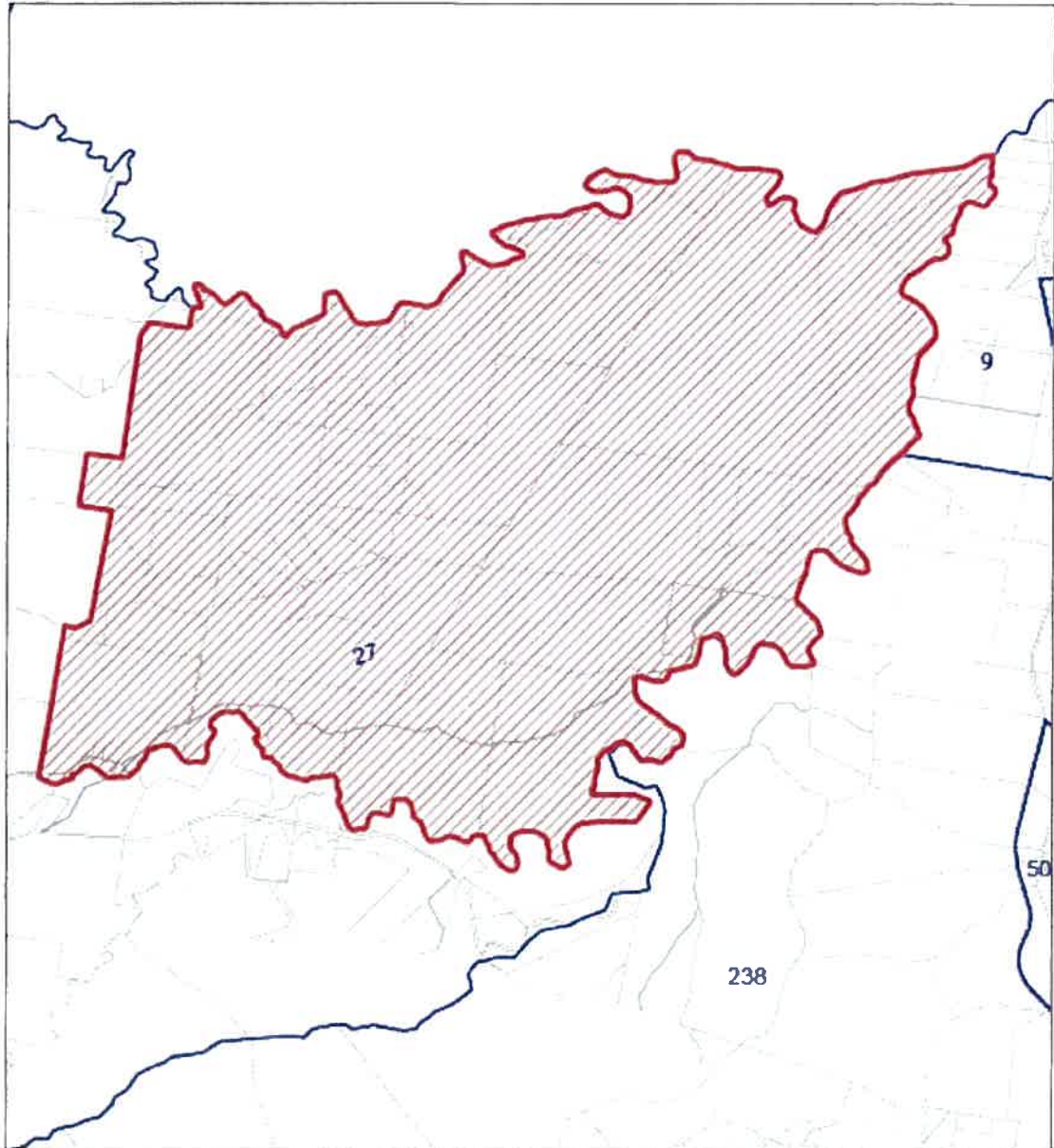
Attachment 2 - Areas on northern and eastern sides of Boonah proposed for transfer from Division 6 to Division 5



**Attachment 3 - Areas between Kooralbyn Road and Running Creek Road
proposed from transfer between Divisions 3 and 5**



Attachment 4 - Area north of Wyaralong Dam proposed for transfer from Division 6 to Division 4



APPENDIX C

Invitation for Written Submissions

QUEENSLAND CHANGE COMMISSION SCENIC RIM REGIONAL COUNCIL

INVITATION FOR SUBMISSIONS

The Scenic Rim Regional Council has advised that its electoral divisions no longer meet the quota requirements set down in the Local Government Act. The Minister responsible for Local Government has in turn referred the matter to the Change Commission for independent assessment.

The Commission invites written suggestions from interested persons and bodies relating to the council's electoral divisions, to be lodged on or before **5.00 pm Friday 29 May 2015**.

For the purpose of this review, the Commission has determined that the average number of enrolled electors for electoral divisions is 4,424. Section 15 of the Act requires the Commission to ensure that the number of enrolled electors in all divisions does not differ from this average by more than 10%. Applying the specified level of tolerance means that the minimum number of electors in each division must be 3,981, with a maximum of 4,866. (These figures are as at 23 February 2015 and may need to be readjusted slightly depending upon population growth between now and the Local Government elections scheduled for March 2016.)

Further information about the review process and advice on formulating suggestions may be found on the Electoral Commission of Queensland website under Local Government Reviews.

Suggestions should be marked SCENIC RIM REGIONAL and be lodged as follows:-

- by posting to:
Change Commissioner,
Local Government Change Commission
GPO Box 1393, BRISBANE, QLD 4001
- by personal delivery, between the hours of 9.00 am and 5.00 pm to:
Electoral Commission of Queensland,
Level 6, Forestry House,
160 Mary Street, Brisbane
- by email to scenicrimregionalcouncilreview@ecq.qld.gov.au or
- online form.

It would assist the Commission if anyone intending to submit maps with written suggestions could do so by using maps of the present divisions which are available on the Commission's website, or by contacting the Commission on 1300 881 665 for assistance.

If you wish to lodge a submission, please note that all submissions will be published in their entirety (including name and address details) on the Commission's website.

Walter van der Merwe
Change Commissioner
Electoral Commission of Queensland

BLP/060383

QUEENSLAND CHANGE COMMISSION SCENIC RIM REGIONAL COUNCIL

INVITATION FOR SUBMISSIONS

The Scenic Rim Regional Council has advised that its electoral divisions no longer meet the quota requirements set down in the Local Government Act. The Minister responsible for Local Government has in turn referred the matter to the Change Commission for independent assessment.

The Commission invites written suggestions from interested persons and bodies relating to the council's electoral divisions, to be lodged on or before **5.00 pm Friday 29 May 2015**.

For the purpose of this review, the Commission has determined that the average number of enrolled electors for electoral divisions is 4,424. Section 15 of the Act requires the Commission to ensure that the number of enrolled electors in all divisions does not differ from this average by more than 10%. Applying the specified level of tolerance means that the minimum number of electors in each division must be 3,981, with a maximum of 4,866. (These figures are as at 23 February 2015 and may need to be readjusted slightly depending upon population growth between now and the Local Government elections scheduled for March 2016.)

Further information about the review process and advice on formulating suggestions may be found on the Electoral Commission of Queensland website under Local Government Reviews.

Suggestions should be marked SCENIC RIM REGIONAL and be lodged as follows:-

- by posting to:
Change Commissioner,
Local Government Change Commission
GPO Box 1393, BRISBANE, QLD 4001
- by personal delivery, between the hours of 9.00 am and 5.00 pm to:
Electoral Commission of Queensland,
Level 6, Forestry House,
160 Mary Street, Brisbane
- by email to scenicrimregionalcouncilreview@ecq.qld.gov.au or
- online form.

It would assist the Commission if anyone intending to submit maps with written suggestions could do so by using maps of the present divisions which are available on the Commission's website, or by contacting the Commission on 1300 881 665 for assistance.

If you wish to lodge a submission, please note that all submissions will be published in their entirety (including name and address details) on the Commission's website.

Walter van der Merwe

**Change Commissioner
Electoral Commission of Queensland**

Elect06/6383

APPENDIX D

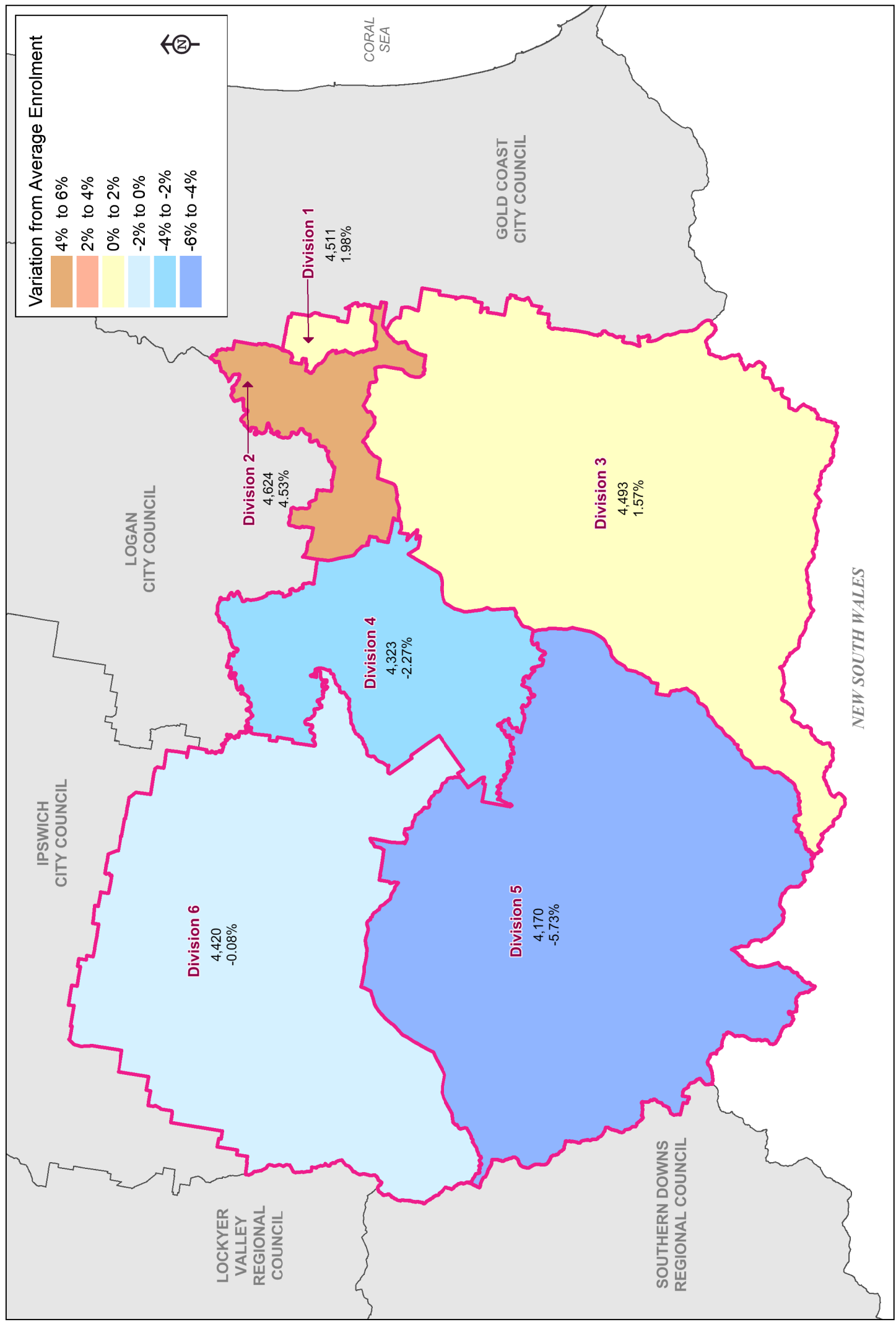
Change Commission's Proposed Determination

SCENIC RIM REGIONAL COUNCIL

Actual Total
Actual Average

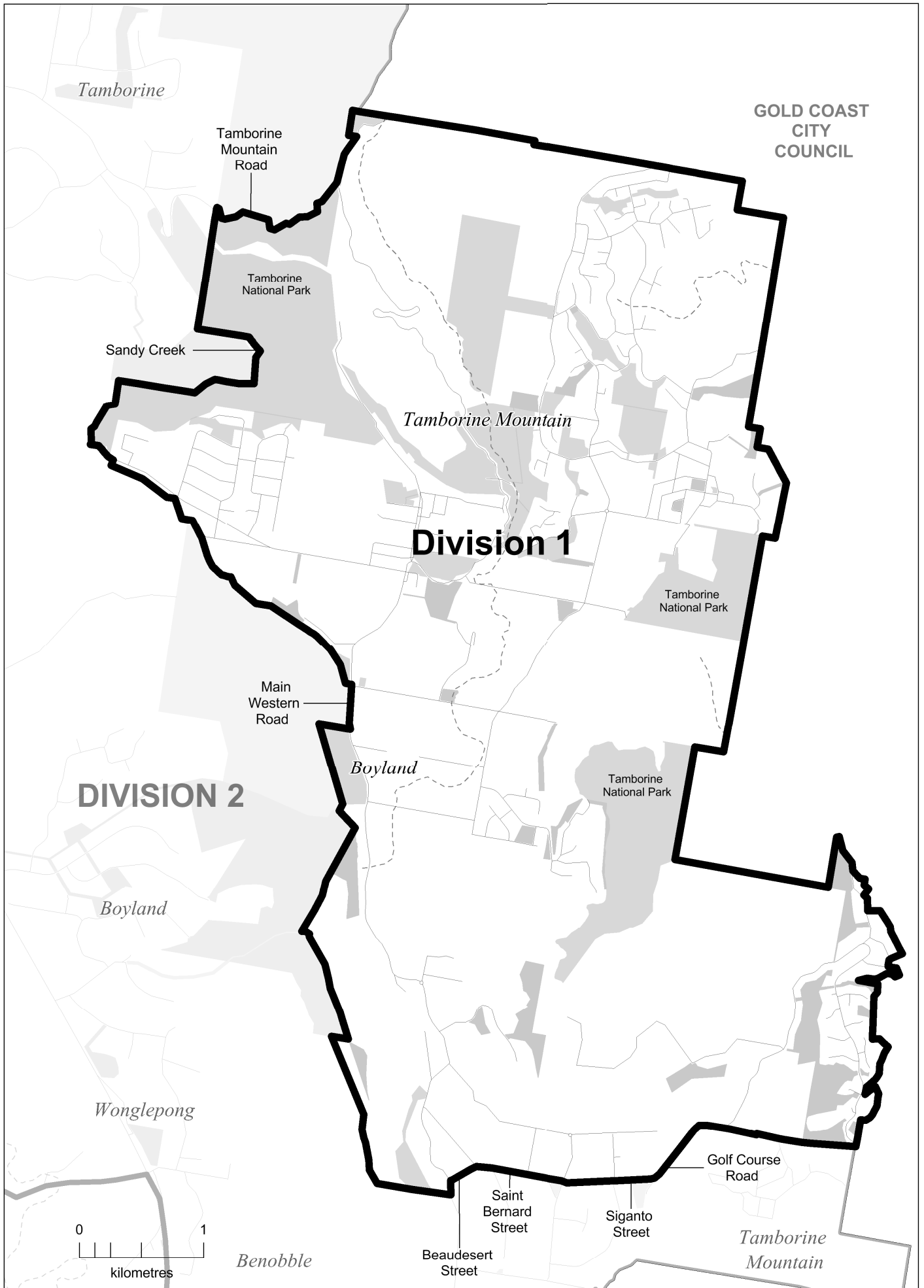
Actual Lower Limit
Actual Upper Limit

SCENIC RIM REGIONAL COUNCIL PROPOSED DIVISION BOUNDARIES

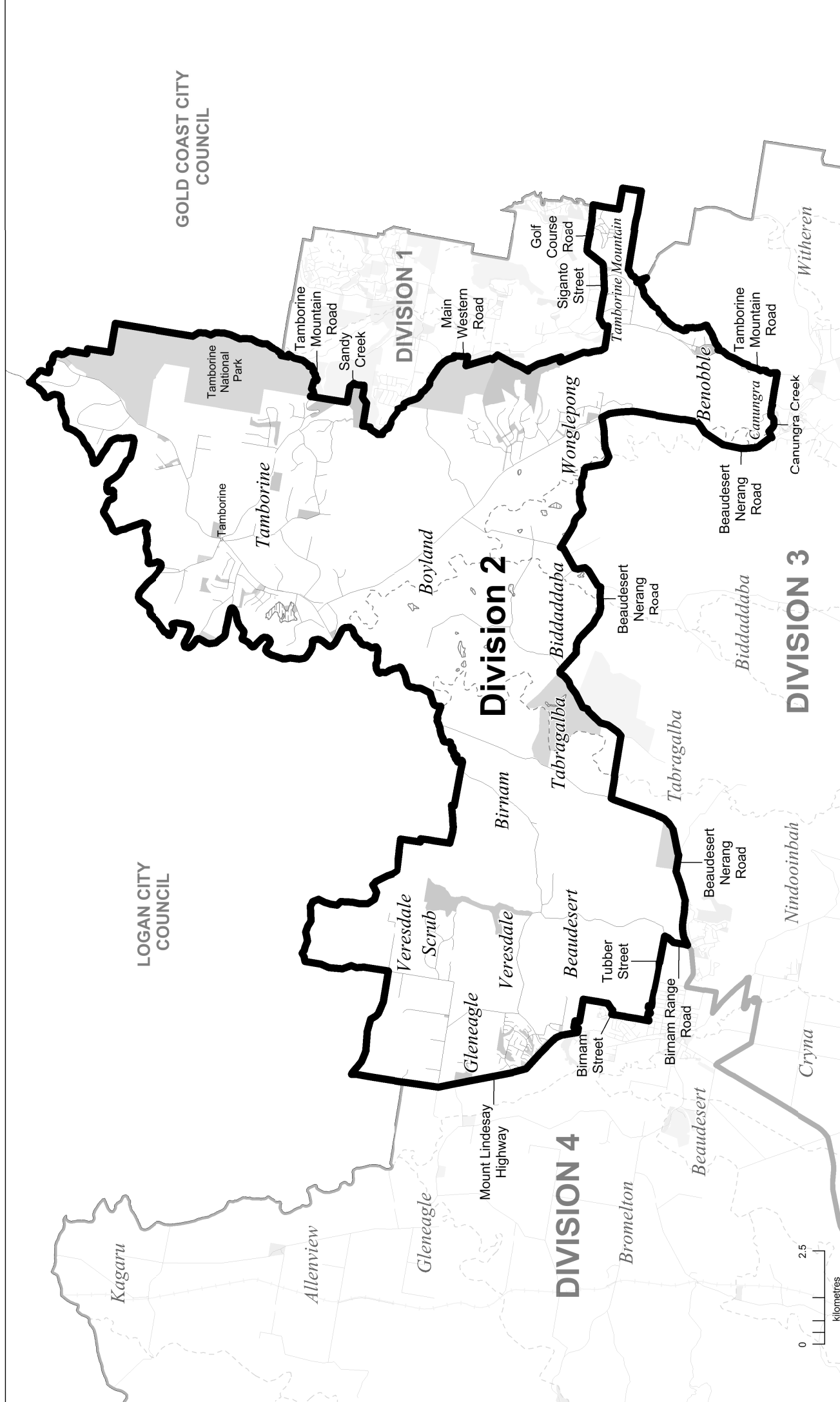


2015 PROPOSED DIVISIONAL BOUNDARIES

DIVISION 1



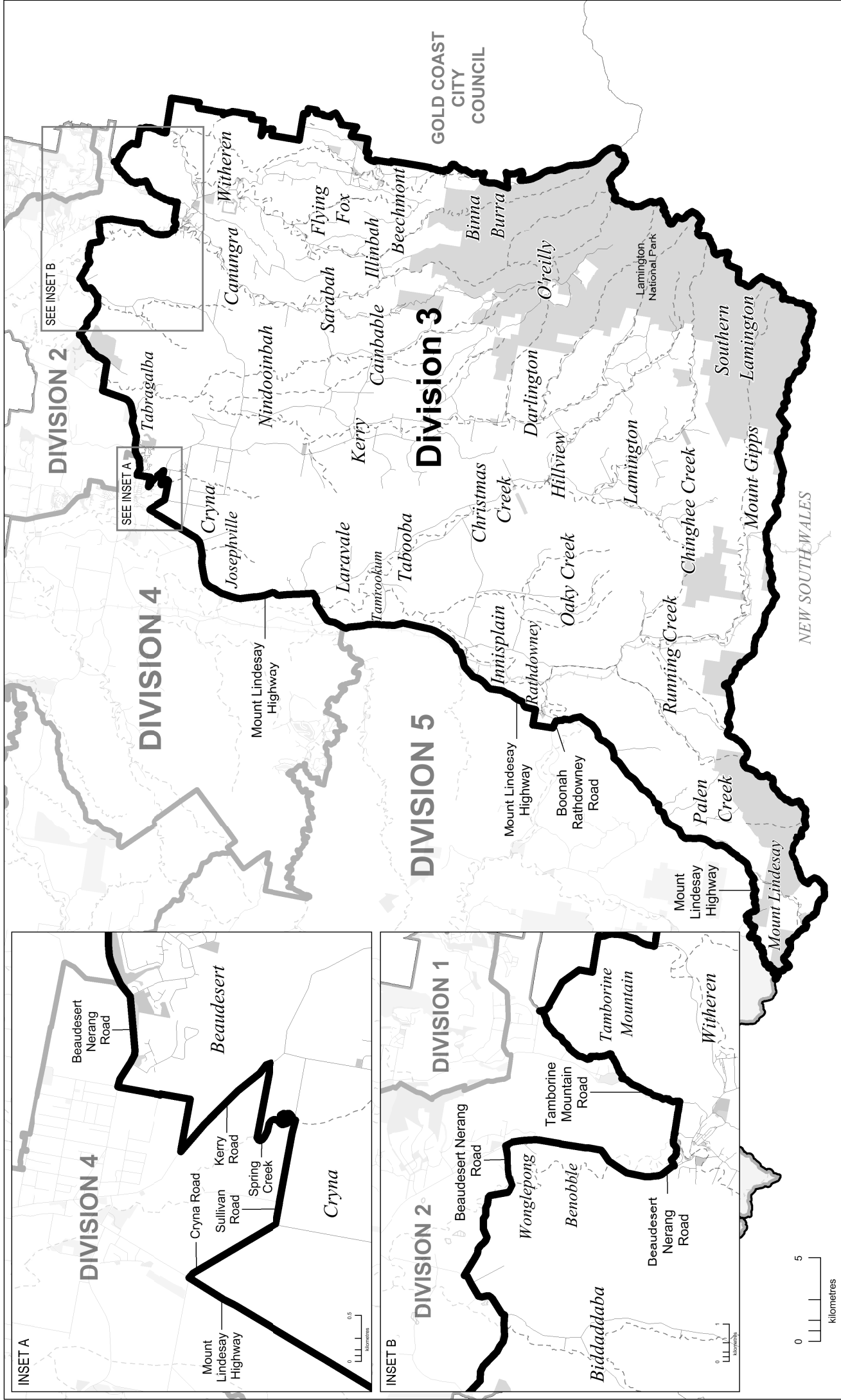
DIVISION 2



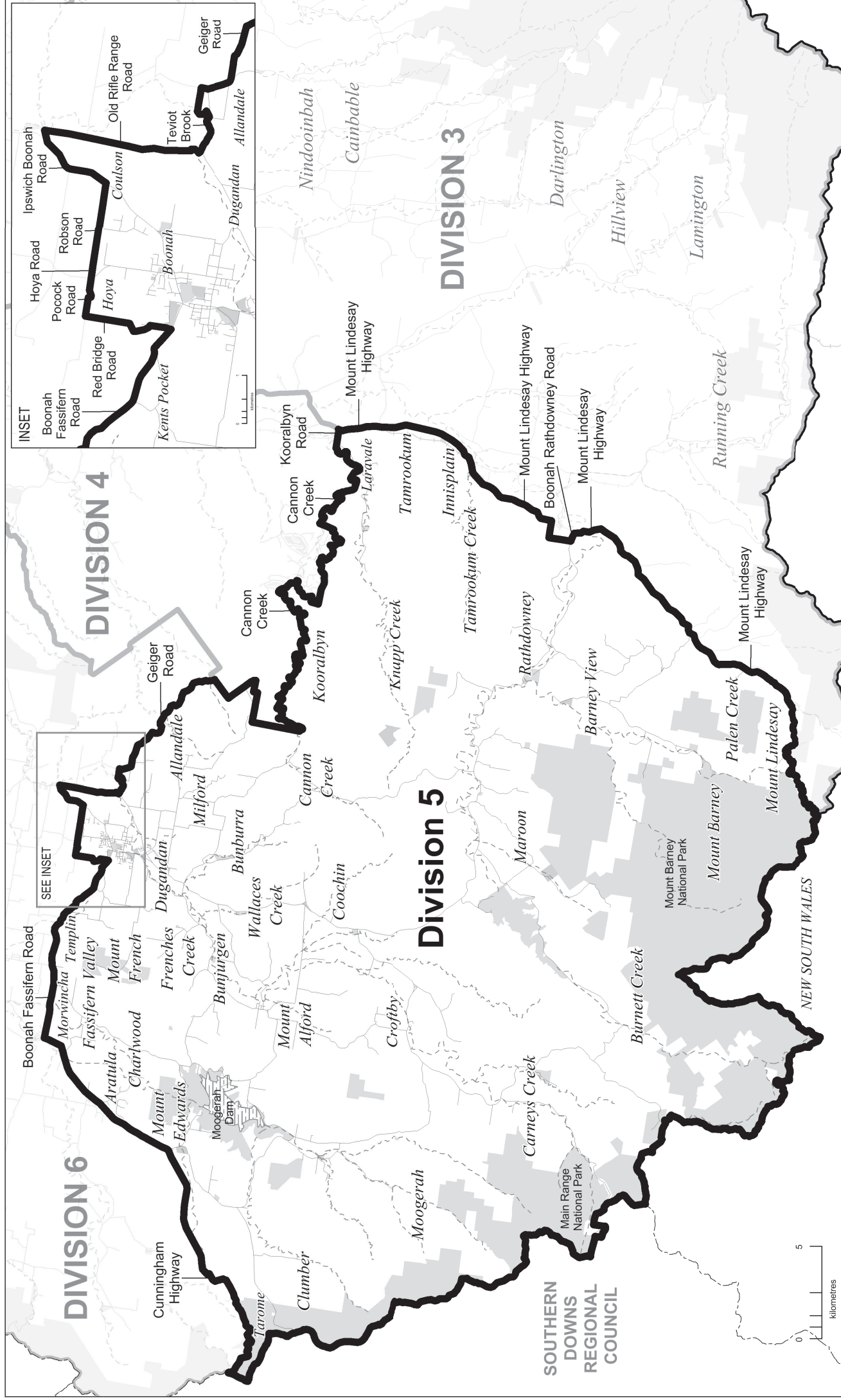
Proposed Division Boundary
 Proposed Adjacent Division Boundary
 Road
 Railway
 Watercourse
 Waterbody
 Park / Reserve



DIVISION 3



DIVISION 5



DIVISION 6



Proposed Division Boundary
Proposed Adjacent Division Boundary

Road
Railway

Watercourse
Waterbody

Park / Reserve



APPENDIX E

**Invitation for Objections to the Proposal
Comments to the Proposed Determination**

LOCAL GOVERNMENT CHANGE COMMISSION SCENIC RIM REGIONAL COUNCIL

INVITATION FOR OBJECTIONS TO THE PROPOSAL

The Scenic Rim Regional Council has advised that its electoral divisions no longer meet the quota requirements set down in the *Local Government Act 2009* (Act). The Minister responsible for Local Government has in turn referred the matter to the Local Government Change Commission for an independent assessment.

The Commission now invites written objections from interested persons and bodies' relating to the council's proposed ten electoral divisions, to be lodged **on or before 5.00pm Friday 14 August 2015**.

For this phase of the review, the enrolment for Scenic Rim Regional Council as at 23 February 2015 is being used. The total enrolment was 26,541. The Commission has determined that 4,424 is the reasonable proportion of electors for an electoral division. Section 17 of the Act requires the Commission to ensure that the number of enrolled electors in all divisions does not differ from this reasonable proportion by $\pm 10\%$. In order to meet the enrolment criteria set out in the Act, the number of electors in each division must be within the minimum of 3,981 and the maximum of 4,866. Furthermore, the Act requires that the reasonable proportion of electors must be worked out as near as practicable to the time when the change is to happen to ensure demographic representation for each division of Scenic Rim Regional Council. Projected enrolment for March 2016 and February 2019 has been used to assist with this requirement.

Further information about the review process, reference material, maps, guidelines and advice on preparing objections to the proposal may be found on the Electoral Commission Queensland (ECQ) website (www.ecq.qld.gov.au); under ELECTORAL DISTRICTS then LOCAL GOVERNMENT AREAS then LOCAL GOVERNMENT REVIEWS then click Scenic Rim Regional.

Anyone interested in lodging an objection should note that all objections will be published on the Commission's website in their entirety and in a publication.

Objections should be marked SCENIC RIM and may be:

- posted to:

Local Government Change Commission, GPO Box 1393, BRISBANE, QLD 4001 or

- personally delivered to:

Electoral Commission Queensland, Level 6, Forestry House,
160 Mary Street, Brisbane, between the hours of 9.00am and 5.00 pm or

- lodged by email to: scenicrimregionalcouncilreview@ecq.qld.gov.au or

- lodged via online form:

Which can be found on the ECQ website (www.ecq.qld.gov.au) under ELECTORAL DISTRICTS then LOCAL GOVERNMENT AREAS then LOCAL GOVERNMENT REVIEWS then click on Scenic Rim Regional and scroll to the bottom of the Proposed Determination Section.

It would assist the Commission if anyone intending to submit objections accompanies them with the electronic mapping data if this has been prepared, preferably in MapInfo and/or KML format in projection GDA94 – Longitude/Latitude (Australia GDA94).

For any assistance related to the review matter please refer to the Commission's website, or contact the Commission on 1300 881 665 for assistance.

Walter van der Merwe
Change Commissioner
Electoral Commission Queensland

Blaze072335

LOCAL GOVERNMENT CHANGE COMMISSION SCENIC RIM REGIONAL COUNCIL

INVITATION FOR OBJECTIONS TO THE PROPOSAL

The Scenic Rim Regional Council has advised that its electoral divisions no longer meet the quota requirements set down in the *Local Government Act 2009* (Act). The Minister responsible for Local Government has in turn referred the matter to the Local Government Change Commission for an independent assessment.

The Commission now invites written objections from interested persons and bodies' relating to the council's proposed six electoral divisions, to be lodged **on or before 5.00pm Friday 14 August 2015**.

For this phase of the review, the enrolment for Scenic Rim Regional Council as at 23 February 2015 is being used. The total enrolment was 26,541. The Commission has determined that 4,424 is the reasonable proportion of electors for an electoral division. Section 17 of the Act requires the Commission to ensure that the number of enrolled electors in all divisions does not differ from this reasonable proportion by $\pm 10\%$. In order to meet the enrolment criteria set out in the Act, the number of electors in each division must be within the minimum of 3,981 and the maximum of 4,866. Furthermore, the Act requires that the reasonable proportion of electors must be worked out as near as practicable to the time when the change is to happen to ensure demographic representation for each division of Scenic Rim Regional Council. Projected enrolment for March 2016 and February 2019 has been used to assist with this requirement.

Further information about the review process, reference material, maps, guidelines and advice on preparing objections to the proposal may be found on the Electoral Commission Queensland (ECQ) website (www.ecq.qld.gov.au); under ELECTORAL DISTRICTS then LOCAL GOVERNMENT AREAS then LOCAL GOVERNMENT REVIEWS then click Scenic Rim Regional.

Anyone interested in lodging an objection should note that all objections will be published on the Commission's website in their entirety and in a publication.

Objections should be marked SCENIC RIM and may be:

- posted to:

Local Government Change Commission, GPO Box 1393, BRISBANE, QLD 4001 or

- personally delivered to:

Electoral Commission Queensland, Level 6, Forestry House,
160 Mary Street, Brisbane, between the hours of 9.00 am and 5.00 pm or

- lodged by email to: scenicrimregionalcouncilreview@ecq.qld.gov.au or

- lodged via online form:

Which can be found on the ECQ website (www.ecq.qld.gov.au) under ELECTORAL DISTRICTS then LOCAL GOVERNMENT AREAS then LOCAL GOVERNMENT REVIEWS then click on Scenic Rim Regional and scroll to the bottom of the Proposed Determination Section.

It would assist the Commission if anyone intending to submit objections accompanies them with the electronic mapping data if this has been prepared, preferably in MapInfo and/or KML format in projection GDA94 – Longitude/Latitude (Australia GDA94).

For any assistance related to the review matter please refer to the Commission's website, or contact the Commission on 1300 881 665 for assistance.

Walter van der Merwe

**Change Commissioner
Electoral Commission Queensland**

Blaze072335

From: no-reply@ecq.qld.gov.au
Sent: Thursday, 30 July 2015 12:20 PM
To: Reviews
Subject: Feedback Form Received from Jennifer Sanders

Name: Jennifer Sanders

Email Address: jennifer.s@scenicrim.qld.gov.au

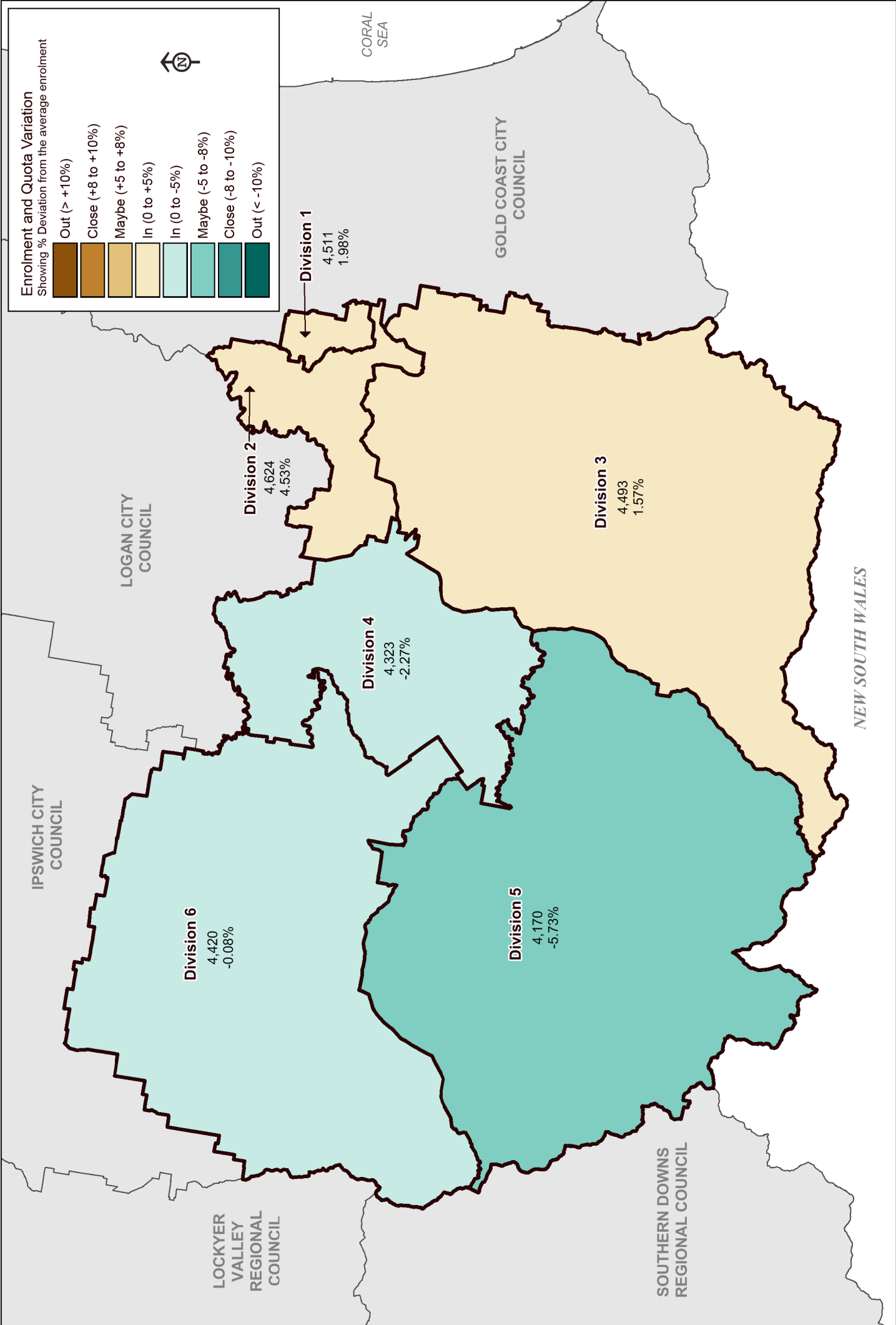
Council: Scenic Rim Regional

Additional Information: Wild Pig Creek Road can only be accessed from the Logan Council roads. It has been included in Division 4 for Scenic Rim Regional Council but should really be part of the Logan Council area.

APPENDIX F

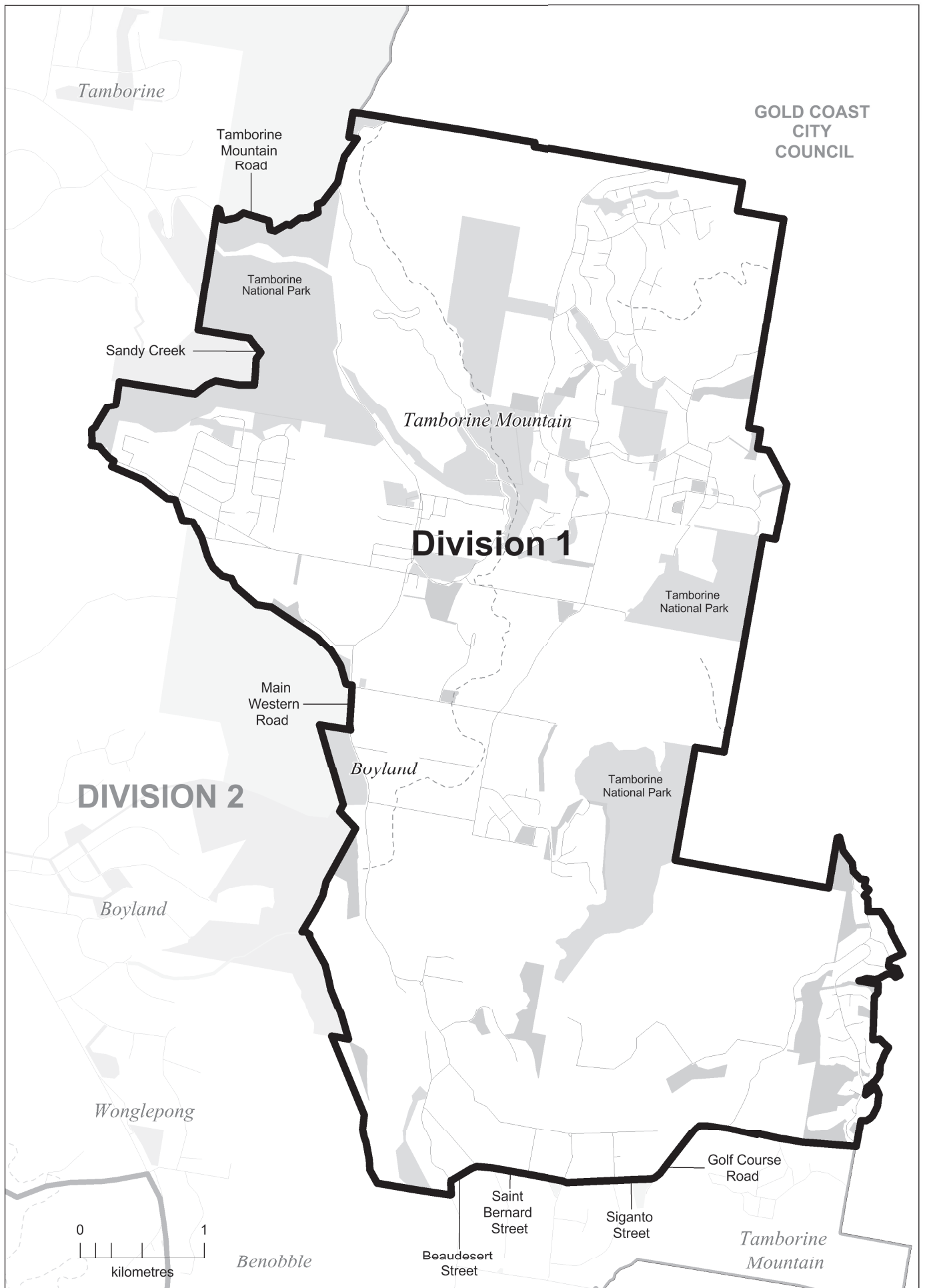
**Maps of Council's Electoral
Divisions for 2016 Elections**

SCENIC RIM REGIONAL COUNCIL FINAL DIVISION BOUNDARIES

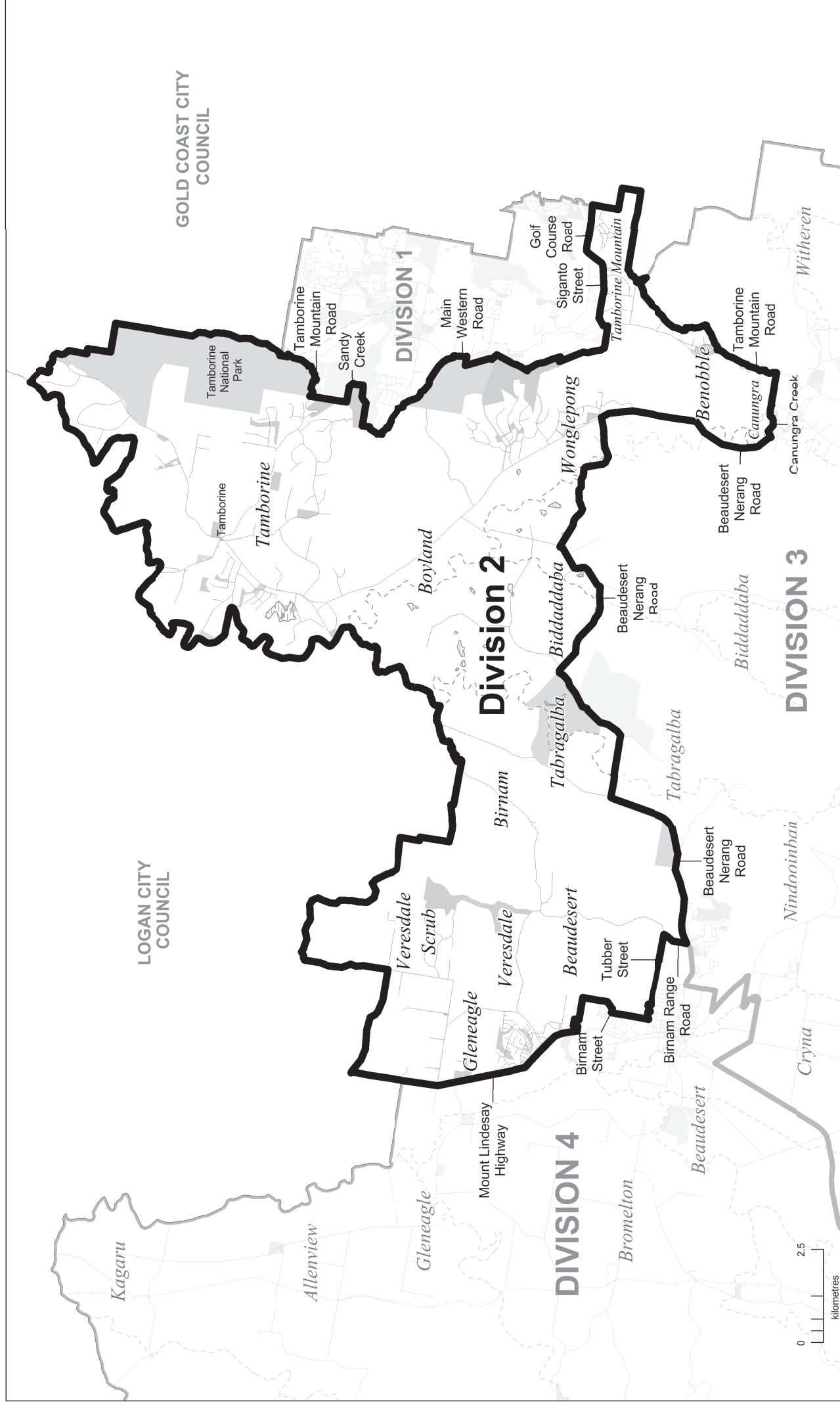


2015 DIVISIONAL BOUNDARIES

DIVISION 1

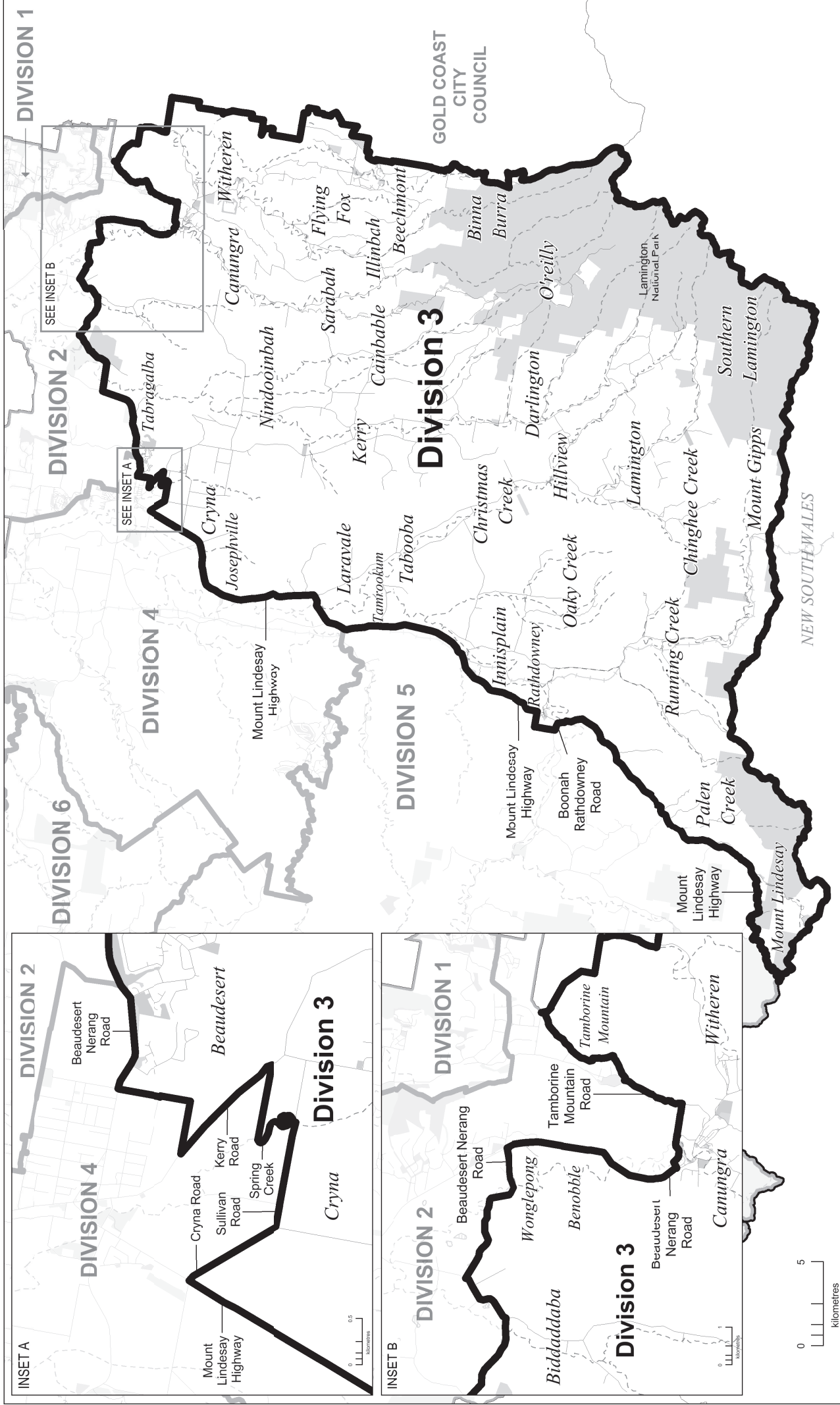


DIVISION 2



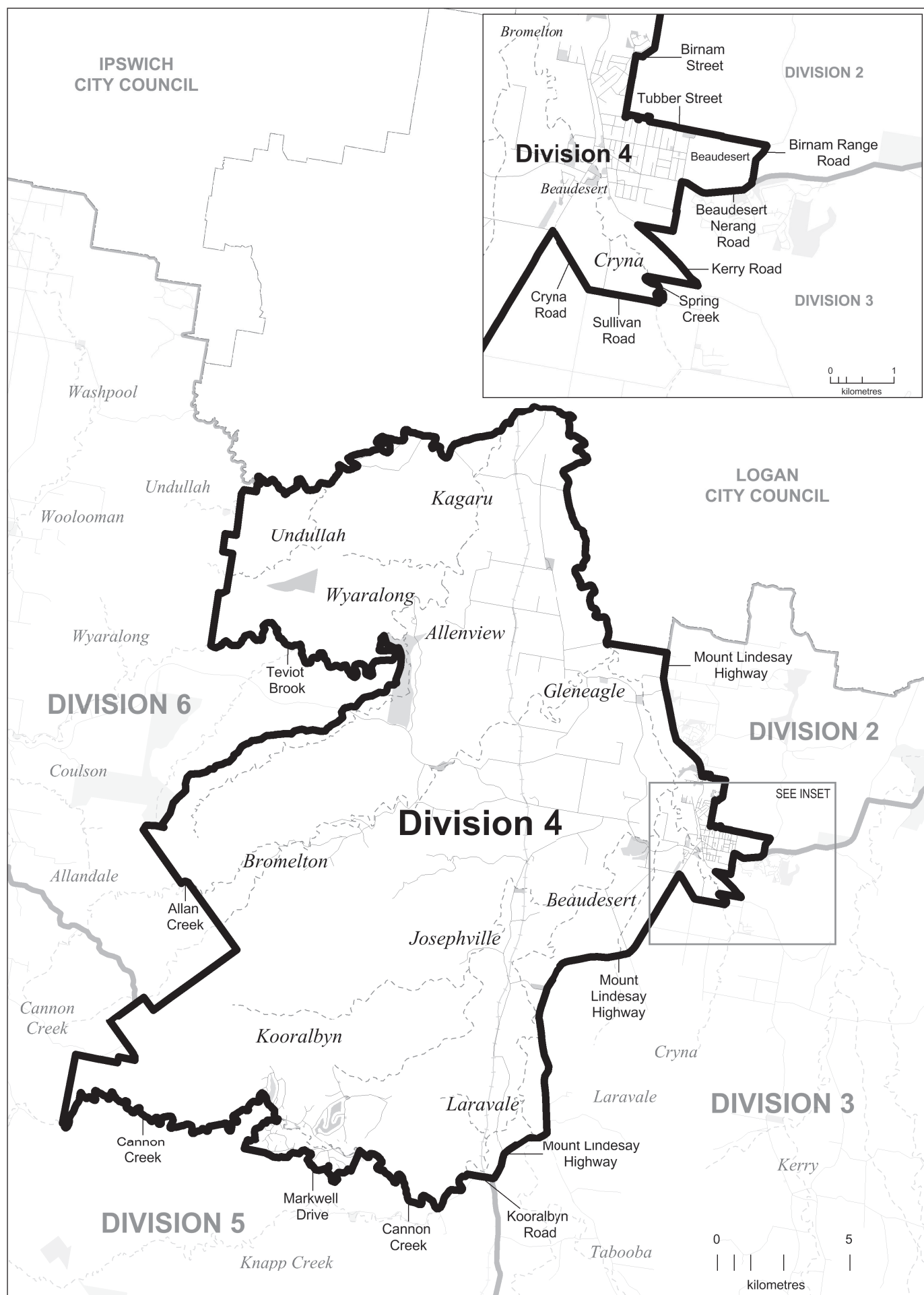
2015 DIVISIONAL BOUNDARIES

DIVISION 3



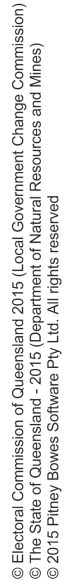
2015 DIVISIONAL BOUNDARIES

DIVISION 4



- Division Boundary
- Adjacent Division Boundary
- Road
- Railway
- Watercourse
- Waterbody
- Park / Reserve

DIVISION 5



2015 DIVISIONAL BOUNDARIES

DIVISION 6

