



LOCAL GOVERNMENT CHANGE COMMISSION

2015 REDIVISION OF ELECTORAL DIVISIONS WITHIN ROCKHAMPTON REGIONAL COUNCIL

FINAL DETERMINATION

SEPTEMBER 2015



LOCAL GOVERNMENT CHANGE COMMISSION

2015 REDIVISION OF ELECTORAL DIVISIONS WITHIN ROCKHAMPTON REGIONAL COUNCIL

FINAL DETERMINATION

SEPTEMBER 2015

Electoral Commission of Queensland
Level 6, 160 Mary Street, Brisbane QLD 4000
GPO Box 1393, Brisbane QLD 4001

Telephone: 1300 881 665
Facsimile: (07) 3036 5776
Website: www.ecq.qld.gov.au

TABLE OF CONTENTS

FOREWORD	3
CHAPTER 1 – INTRODUCTION	4
TERMS OF REFERENCE	4
LEGISLATIVE PROVISIONS	4
DETERMINING THE QUOTA.....	5
<i>Technical Process</i>	5
Table 1 – Enrolment, Projections and Averages.....	5
CHAPTER 2 – THE REVIEW PROCESS	6
CHAPTER 3 – FINAL DETERMINATION.....	7
CURRENT ENROLMENT.....	7
Table 2 – Summary of Enrolments for the Current Electoral Divisions.....	7
PROPOSED DETERMINATION.....	8
OBJECTION TO THE PROPOSED DETERMINATION.....	8
FINAL DETERMINATION.....	9
Table 3 – Summary of Enrolments for the Final Electoral Divisions	9
APPENDIX A Previous Electoral Divisions	
APPENDIX B Minister’s Referral and Council’s Submission	
APPENDIX C Invitation for Written Submissions and Written Submissions	
APPENDIX D Change Commission’s Proposed Determination	
APPENDIX E Invitation for Objections to the Proposal	
Comments to the Proposed Determination	
APPENDIX F Maps of Council's Electoral Divisions for 2016 Elections	

FOREWORD

This report outlines the Final Determination for the redivision of electoral divisions within Rockhampton Regional Council.

The *Local Government Act 2009 (Qld)* (the Act) provides for a Local Government Change Commission (the Change Commission) to conduct the assessment phase of the boundary change process. The Act also provides for the Change Commission to be the appointed independent assessment body for boundary changes within Rockhampton Regional Council.

The Change Commission is made up of the Electoral Commissioner or a combination of the Electoral Commissioner, the Deputy Electoral Commissioner and a casual Commissioner. The Change Commission for this review is made up of:

- Mr Walter van der Merwe, Electoral Commissioner; and
- Mr Gregory Rowe, casual Commissioner (appointed on 13 November 2015 for three years by the Governor in Council).

On 2 April 2015 a reference was made to the Change Commission by the Minister responsible for Local Government (see Appendix B).

For electoral purposes Rockhampton Regional Council is divided into seven electoral divisions. This report outlines the Change Commission's Final Determination for the boundaries of the divisions. It also sets out the reasons for the Change Commission's determination. The Change Commission's proposal was adopted unanimously at a meeting held on Tuesday 22 September 2015, both Commissioners were present.

Chapter 1 of this report provides an introduction to the Change Commission's requirements for undertaking an assessment of the internal boundaries. Chapter 2 presents a summary of the review process that was undertaken. A more detailed outline of the Final Determination appears in Chapter 3. Maps of the final boundary changes are in Appendix F.

In accordance with the Act the Change Commission may conduct the review in any way that it considers appropriate. To this end, the Change Commission provided data on the current boundaries and enrolment statistics as sourced from the Australian Electoral Commission (AEC) as at 23 February 2015. The Change Commission called for both suggestions and objections to the proposed boundary changes. Two public submissions and five objections were received.

The Rockhampton Regional Council provided a written submission on 15 April 2015. Council also expressed their acceptance of the Proposed Determination on 20 August 2015, with minor alterations suggested for the Division 7 boundary and the re-numbering of Divisions 8, 9 and 10 (see Appendix E). The Change Commission is appreciative of the Council for its submission and correspondence throughout this process.

The Commissioners would also like to acknowledge the valuable assistance and expertise provided by the executive, mapping and support staff of the Electoral Commission Queensland including Dermot Tiernan, Zonka Petrussevska, Kurt Bonair, Moira McNeil, Yan Liu, Lesley Trost and Elise Arklay, and extend their thanks to the Queensland Treasury for the population projection figures.

Walter van der Merwe and Gregory Rowe

Change Commission

CHAPTER 1 – INTRODUCTION

TERMS OF REFERENCE

On 2 April 2015 the Change Commission received a reference to review the electoral arrangements of the Rockhampton Regional Council from the Honourable Jackie Trad MP, Minister responsible for Local Government (see Appendix B).

LEGISLATIVE PROVISIONS

The Rockhampton Regional Council has 52,197 electors (as at 23 February 2015). The Council is divided into seven electoral divisions. Each division elects one Councillor while the Mayor is elected by all voters in the local government area. Elections are set by date to be held every four years as prescribed by the *Local Government Electoral Act 2011*. The next Rockhampton Regional Council election is scheduled for 19 March 2016.

The *Local Government Act 2009 (Qld)* (the Act) allows for changes to divisions in local government areas to ensure that each division has a reasonable proportion of electors. Pursuant to Section 22 of the Act, the Change Commission for this review was constituted by the Electoral Commissioner and the casual Commissioner.

Section 15 of the Act requires the Rockhampton Regional Council to review whether each of the divisions has a reasonable proportion of electors and give the Electoral Commissioner and the Minister a written notice of the results of the review no later than 1 March in the year that is one year before the year of the quadrennial elections. The date referred to in this report is known as the information date. The Council reported that two divisions (Divisions 4 and 10) did not meet the reasonable proportion of elector's requirements on 25 February 2015.

Under the provisions of the Section 19 of the Act, in reviewing the division of a local government area the Change Commission is required to consider:

- 1) The Change Commission is responsible for assessing whether a proposed local government change is in the public interest;
- 2) In doing so, the Change Commission must consider:
 - a. whether the proposed local government change is consistent with a Local Government Act; and
 - b. the views of the Minister about the proposed local government change; and
 - c. any other matters prescribed under a regulation.

The Change Commission is required to release the outcomes of its assessment to the public and the reasoning behind the results, by publishing its findings in a newspaper circulating generally in the local government area, in the Government Gazette and on the Electoral Commission's website. The Change Commission must also give the results of its assessment to the Minister for Local Government for implementation. The method of implementation is by way of regulation by the Governor in Council.

A decision of the Change Commission is not subject to appeal.

DETERMINING THE QUOTA

The Act specifies binding quota requirements. A quota is determined by dividing the total number of electors in the local government area by the number of councillors (other than the mayor), plus or minus:

- for a council with more than 10,000 electors – 10%; or
- for any other council – 20%.

Section 15 of the Act allows for a margin of 10 per cent for Rockhampton Regional Council to be adopted in relation to determining a reasonable proportion of electors. For ease of understanding the proportion of electors and the margin will be referred to in this document as “quota”.

The Change Commission, when formulating its proposals must ensure that each division complies with the quota as near as practicable to the election date. There is no latitude allowed for the Change Commission to determine electoral boundaries that do not comply with these requirements.

Technical Process

Key to the redivision is elector count information sourced from the electoral roll organised around the smallest unit for the release of Census data known as a Statistical Area (SA1) utilised by the Australian Bureau of Statistics.

The AEC, which maintains the electoral roll for Queensland pursuant to a joint roll agreement, provided statistics from the roll on numbers of electors in each SA1 in the area of the Rockhampton Regional Council on 23 February 2015. Projections of population movement were then applied to the SA1s using data provided by Queensland Treasury. Future dates for projections were set at 31 March 2016 (just after the next quadrennial election) and 28 February 2019 (the last opportunity before the information date preceding the March 2020 election).

Table 1 – Enrolment, Projections and Averages

	23 February 2015	31 March 2016	28 February 2019
Number of divisions	7	7	7
Enrolment	52,197	53,211	55,905
Average electors per division	7,457	7,602	7,986
Permitted Maximum Number (+10%) per division	8,202	8,362	8,785
Permitted Minimum Number (-10%) per division	6,711	6,841	7,188

CHAPTER 2 – THE REVIEW PROCESS

The Rockhampton Regional Council is divided into seven single-member divisions. By letter dated 25 February 2015, the Council advised the Minister that its Divisions (Divisions 4 and 10) were out of tolerance.

Based on 23 February 2015 enrolment data, the Change Commission calculated a quota (average enrolment) of 7,457, with a minimum of 6,711 (-10%) and an upper limit of 8,202 (+10%) electors permissible in each district.

On 15 April 2015, the Rockhampton Regional Council lodged a proposed solution that involved changes to all seven divisions within Council. Relevant correspondence is attached at Appendix B.

In accordance with Section 19 (4) of the Act, a public notice was published on 8 May 2015 inviting suggestions from interested persons. The advertisement (see Appendix C) noted that received submissions would be made available for public inspection. Suggestions closed on 29 May 2015. Two public submissions were received.

A second phase of consultation began on 31 July 2015 following an advertised call for objections to the Change Commission's Proposed Determination (see Appendix E). Objections closed on the 21 August 2015. One submission was received from the Rockhampton Regional Council. Five public comments were also received.

In reaching its Final Determination the Change Commission took into account Council's submissions, public feedback, as well as the projected future changes in electoral numbers provided by the Queensland Treasury.

Wherever possible, the Change Commission endeavours to devise boundaries that not only meet current quota requirements but are sustainable for at least two quadrennial elections and are in the public interest. The nature and extent of population growth or decline may render this impossible in some cases and the Change Commission recognises the possibility that boundaries may need to be reviewed again in readiness for the 2020 quadrennial elections.

CHAPTER 3 – FINAL DETERMINATION

CURRENT ENROLMENT

The Rockhampton Regional Council has a total of 52,197 enrolled electors spread across seven divisions, with an average number of 7,457 electors per division. Applying the plus or minus tolerance of 10 per cent allowed by the Act, the minimum number of electors required for each division is 6,711, with a maximum of 8,202.

As can be observed in Table 2, Divisions 4 and 10 are currently out of quota. Division 4 is over the maximum allowable number of electors, while Division 10 is under the minimum. To address this imbalance, both Council and the Change Commission needed to alter the divisional boundaries to balance elector numbers across all seven divisions. As part of its decision making process, the Change Commission has attempted to cater for future demographic trends, trying to keep all of the divisions within the Rockhampton Regional Council in quota in the lead up to the 2016 quadrennial election.

Table 2 – Summary of Enrolments for the Current Electoral Divisions

Division Name	Enrolment as at 23/02/2015	(%) Deviation from Quota	Projected Enrolment as at 31/03/2016	(%) Deviation from Quota	Projected Enrolment as at 28/02/2019	(%) Deviation from Quota
Division 4	9,365	+25.59	9,752	+28.29	10,943	+37.02
Division 5	7,787	+4.43	7,860	+3.4	7,943	-0.54
Division 6	6,894	-7.55	7,011	-7.77	7,306	-8.52
Division 7	6,967	-6.57	7,016	-7.7	7,224	-9.55
Division 8	6,763	-9.3	6,873	-9.58	7,068	-11.5
Division 9	7,738	+3.77	7,941	+4.47	8,544	+6.98
Division 10	6,683	-10.38	6,758	-11.1	6,877	-13.89

PROPOSED DETERMINATION

The Change Commission received two submissions in response to its call for submissions in May 2015. Mr Murphy wrote in relation to keeping Division 7 together and not crossing the river, while Mr Ponicke voiced his wish to see Division 10 expanded.

The Change Commission was satisfied the Proposed Determination addressed the concerns of Mr Murphy by adopting Council's Option 3, however the Change Commission's support for Council's proposed changes to Division 10 meant that Mr Ponicke's submission was unable to be supported.

The Change Commission adopted the majority of divisional boundary changes proposed by the Rockhampton Regional Council, with additional changes to Divisions 4 and 5 to ensure they remain in quota for next year's election (see Appendix D).

OBJECTION TO THE PROPOSED DETERMINATION

The Council indicated its acceptance of the Change Commission's alterations to Divisions 4 and 5 in the Proposed Determination, but suggested a couple additional changes to Division 7 (see Appendix E). It proposed the Division 7 boundary should be re-aligned to Moores Creek in line with Simpson Street to provide more uniform boundaries. Council also requested changes to the Fitzroy River boundary of Division 7, returning it to the centre of the river as it is for the proposed Divisions 5, 6 and 8. The Change Commission determined it was appropriate to incorporate these changes into its final boundaries.

The Change Commission also accepted the Council's request to re-number Divisions 8, 9 and 10 differently to the Proposed Determination.

Council requested:

- Division 9 become Division 1;
- Division 10 become Division 2; and
- Division 8 become Division 3.

Five public comments to the Proposed Determination were received. Two submissions from Mr McCabe and Ms Cowley related to issues outside the purview of this internal divisional review, instead discussing the electoral arrangements within Council.

Mr Bosel and Mr Brown proposed retaining the Division 8 and 10 boundary, suggesting 704 electors be moved from Division 9 into Division 8, while 684 electors in Koongal and Lakes Creek suburbs remain in Division 10. The Change Commission considered their suggestion, however due to the belief that the proposed boundaries were more consistent with community of interest of the Frenchville and Koongal localities; it was unable to accommodate their proposal.

One other comment was received from Ms Cunningham, expressing her support for the Proposed Determination.

FINAL DETERMINATION

The Change Commission was satisfied that its proposal was well-reasoned and satisfied the need to bring the divisions of Rockhampton Regional Council into quota for the 2016 election, while maintaining communities of interest.

The Change Commission recommends that its Proposed Determination formulated from the Council's proposal is to be the new divisional boundaries. Projected growth figures suggest these changes are not likely to keep all the divisions within quota past the 2016 election. It expects the need for very significant future boundary changes prior to the 2020 local government elections, if the current growth rates continue.

The Change Commission's final recommendation to the Governor in Council is as follows:

- ***That for the purposes of the 2016 local government elections, the Rockhampton Regional Council be redivided into seven divisions as shown on the maps contained in Appendix F of this report.***

The Change Commission notes that implementation of this recommendation will give rise to the following divisional elector numbers:

Table 3 – Summary of Enrolments for the Final Electoral Divisions

Division Name	Enrolment as at 23/02/2015	(%) Deviation from Quota	Projected Enrolment as at 31/03/2016	(%) Deviation from Quota	Projected Enrolment as at 28/02/2019	(%) Deviation from Quota
Division 1*	7,034	-5.67	7,221	-5.01	7,808	-2.23
Division 2*	6,960	-6.66	7,037	-7.43	7,163	-10.31
Division 3*	7,190	-3.58	7,314	-3.78	7,518	-5.87
Division 4	7,891	+5.82	8,247	+8.49	9,388	+17.55
Division 5	8,014	+7.47	8,087	+6.39	8,170	+2.3
Division 6	8,141	+9.18	8,289	+9.04	8,634	+8.11
Division 7	6,967	-6.57	7,016	-7.7	7,224	-9.55

* ***Division 1 was previously Division 9***

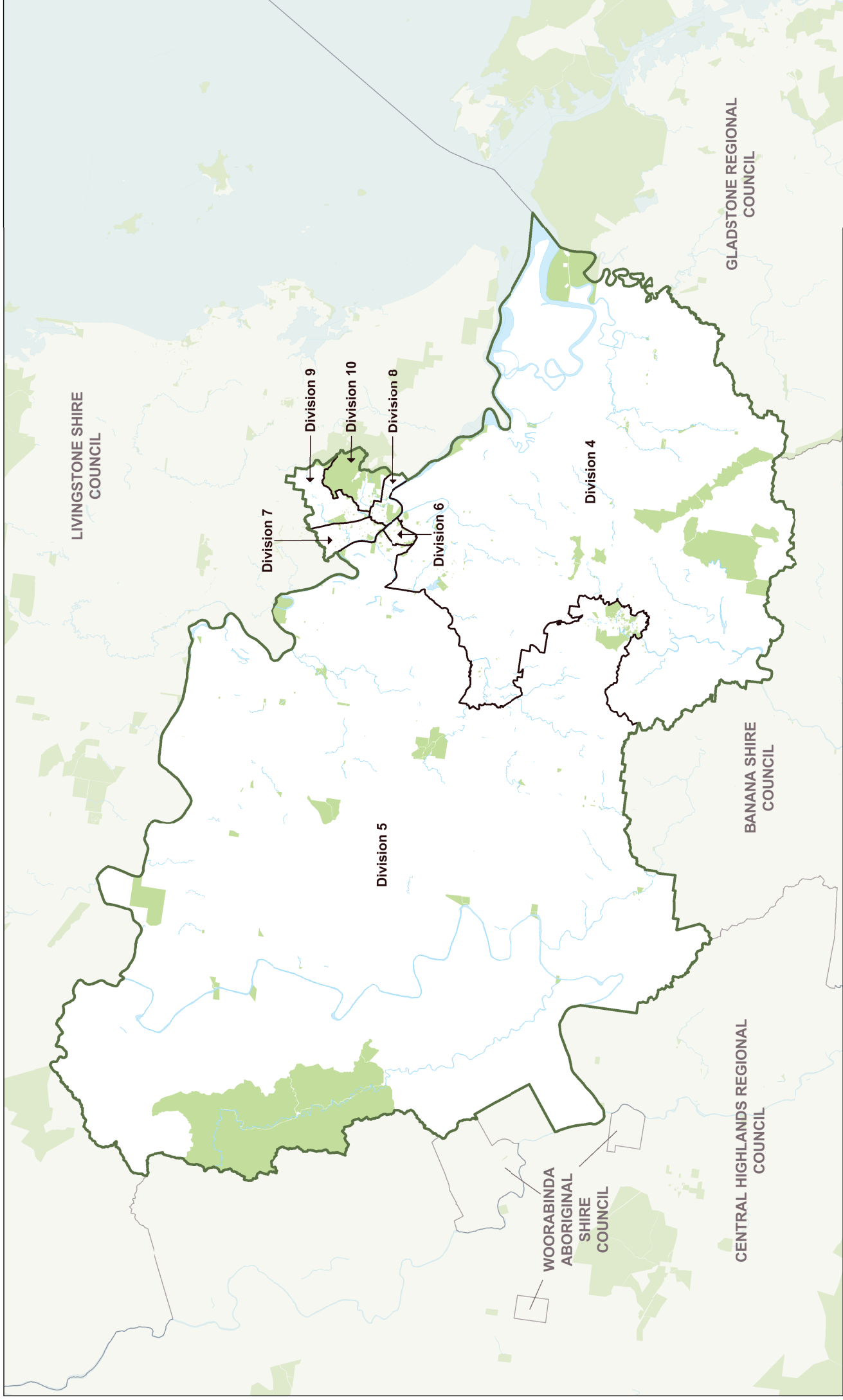
* ***Division 2 was previously Division 10***

* ***Division 3 was previously Division 8***

APPENDIX A

Previous Electoral Divisions

EXISTING ELECTORAL DIVISIONS



APPENDIX B

**Minister's Referral
Council's Submission**



Hon Jackie Trad MP

Deputy Premier

Minister for Transport, Minister for Infrastructure,
Local Government and Planning and Minister for Trade

Our ref: MBN15/49

- 2 APR 2015

Mr Walter van der Merwe
Electoral Commissioner
Electoral Commission Queensland
GPO Box 1393
BRISBANE QLD 4001

Dear Mr van der Merwe

I am writing to you in relation to local government electoral reviews which have been undertaken in preparation for the 2016 local government elections.

I have recently received proposals from 14 local governments seeking a review of their existing electoral arrangements.

The proposals include submissions in relation to the internal divisional boundary distributions where it has been determined that the divisional boundaries are out-of-quota. In addition, four of those local governments have submitted additional proposals for voluntary changes to their existing arrangements.

I note that, under section 19 of *the Local Government Act 2009* (the Act), the Commission must consider whether the local government change is consistent with the Act and must consider my views on any proposed changes.

Having examined each of their proposals, I consider it appropriate to refer each matter to you for independent assessment and determination by the Local Government Change Commission.

For your reference, I have enclosed a summary of each divided local government's quota review, a copy of each proposal referred to you for review and additional supporting information to assist with your review.

Level 12 Executive Building
100 George Street Brisbane
PO Box 15009 City East
Queensland 4002 Australia
Telephone +61 7 3719 7100
Email deputy.premier@ministerial.qld.gov.au

If you require any further information, please contact Mr Max Barrie, Director, Program Implementation and Review on (07) 3452 6704 or max.barrie@dlgcr.qld.gov.au, who will be pleased to assist.

Yours sincerely



JACKIE TRAD MP
DEPUTY PREMIER

**Minister for Transport, Minister for Infrastructure,
Local Government and Planning and Minister for Trade**

Enc (15)

DIVIDED LOCAL GOVERNMENTS – QUOTAS AND PROPOSED VOLUNTARY CHANGES

<u>Local Government</u>	<u>Results of Review</u>	<u>No. of Divisions Out of Quota</u>	<u>Referral to Local Government Change Commission</u>
Banana Shire Council	Out-of-quota	2	Refer quota review
Bundaberg Regional Council	Out-of-quota	2	Refer: <ul style="list-style-type: none"> • quota review • proposal to abolish divisions • proposal to incorporate unallocated area into local government area
Cairns Regional Council	Out-of-quota	1	Refer quota review
Cassowary Coast Regional Council	In quota	0	No referral required
Fraser Coast Regional Council	Out-of-quota	2	Refer quota review
Gold Coast City Council	In quota	0	No referral required
Gympie Regional Council	In quota	0	No referral required
Ipswich City Council	Out-of-quota	5	Refer quota review
Isaac Regional Council	Out-of-quota	2	Refer quota review
Logan City Council	Out-of-quota	1	Refer quota review
Moreton Bay Regional Council	Out-of-quota	2	Refer quota review
North Burnett Regional Council	In quota	0	No referral required
Redland City Council	Out-of-quota	1 (out) and 1 (predicted)	Refer both quota reviews
Rockhampton Regional Council	Out-of-quota	2	Refer: <ul style="list-style-type: none"> • quota review • proposal to renumber divisions
Scenic Rim Regional Council	Out-of-quota	1 (out) and 1 (predicted)	Refer both quota reviews
South Burnett Regional Council	In quota	0	No referral required
Sunshine Coast Regional Council	Out-of-quota	2	Refer quota review
Tablelands Regional Council	Out-of-quota	3	Internal boundary review plus additional voluntary change proposal to increase councillor numbers already referred to Change Commission on 16 December 2014.
Townsville City Council	Out-of-quota	2	Refer quota review
Whitsunday Regional Council	Out-of-quota	1	Refer quota review

15 April 2015

Hon Jackie Trad MP
Deputy Premier and Minister for Infrastructure, Local Government
and Planning
PO Box 15009
CITY EAST QLD 4002

Dear Minister

Electoral Arrangements – 2016 Quadrennial Local Government Elections

I refer to previous correspondence in relation to this matter and advise that, at its meeting on 14 April 2015, Council resolved as follows in relation to the conduct of the 2016 local government elections:

"THAT Council writes to the Minister for Infrastructure, Local Government and Planning to request that the Minister consider that the 2016 Rockhampton Regional Council Local Government Election be conducted by way of a full Postal Vote election."

At the meeting on 14 April 2015, discussions were also held regarding boundary alterations, and Council resolved as follows:

"THAT Council receives the report and resolves to provide the information contained in the report and attachments to the Department of Infrastructure, Local Government and Planning and the Electoral Commission Queensland, that the Council considers Option Number 3 be the preferred Divisional Boundaries for the Rockhampton Regional Council Electoral Divisions."

A copy of the report and attachments as referred to above are included with this letter. As per resolution, Option Number 3 is Council's preferred option.

Please do not hesitate to contact my office on 4936 8278 if you require additional information.

Yours faithfully



Bob Holmes
Acting Chief Executive Officer

cc Electoral Commission Queensland
Mr Stephen Johnston, Department of Infrastructure, Local Government and Planning

17.3 ELECTORAL ARRANGEMENTS 2016 QUADRENNIAL LOCAL GOVERNMENT ELECTION**File No:** 5827

Attachments:

1. Table showing elector numbers per proposed Divisional Electoral options
2. Proposed Electoral Divisions - Option 1
3. Proposed Electoral Divisions - Option 2
4. Proposed Electoral Divisions - Option 3
5. Proposed Electoral Divisions - Option 4
6. Indicative Cost to run 2016 Local Government Election for Rockhampton Regional Council
7. Response from Minister for Infrastructure, Local Government & Planning

Authorising Officer: Evan Pardon - Chief Executive Officer**Author:** Shane Turner - Manager Governance Support

This report is considered confidential in accordance with section 275(1)(h), of the *Local Government Regulation 2012*, as it contains information relating to other business for which a public discussion would be likely to prejudice the interests of the local government or someone else, or enable a person to gain a financial advantage.

SUMMARY

This report provides further information to be submitted to both the Department of Infrastructure, Local Government and Planning and the Electoral Commission Queensland regarding Electoral Arrangements for the 2016 Local Government Elections.

OFFICER'S RECOMMENDATION**THAT:**

1. Council receives the report and resolves to provide the information contained in the report and attachments to the Department of Infrastructure, Local Government and Planning and the Electoral Commission Queensland, that the Council considers Option Number ___ be the preferred Divisional Boundaries for the Rockhampton Regional Council Electoral Divisions; and
2. Council writes to the Minister for Infrastructure, Local Government and Planning to request that the Minister consider that the 2016 Rockhampton Regional Council Local Government Election be conducted by way of a full Postal Vote election.

COMMENTARY

Following the Performance and Services Committee meeting on 24 February 2015 the Chief Executive Officer has written to the Department of Infrastructure, Local Government and Planning regarding the minor boundary anomalies created by the re-formation of Livingstone Shire Council and the request for the Department to consider the wider boundary issues between Rockhampton Regional Council and Livingstone Shire Council for the localities of Glenlee, Glendale and Rockyview.

Council also contacted the Electoral Commission Queensland requesting the latest electoral statistics for the Rockhampton Regional Council Area, primarily as a result of advice received from the Department that 2 of Council's Electoral Divisions were Out of Quota. This advice requires Council to assess its divisional electoral boundaries and provide a recommendation to the Department on how Council desires the anomalies be rectified.

To make an informed decision Council sought the most up to date statistical area data available from the Electoral Commission of Queensland.

Council received the Statistical Area data from the Electoral Commission Queensland for the Rockhampton Regional Council area. This data provides the number of electors in each Statistical Area data set as at 23 February 2015. Each of Council's Seven Divisional Electorates is comprised of many individual Statistical Area data sets. We have analysed the data provided and propose 4 Options for Divisional boundary changes as detailed in the attachments for the Council's consideration.

The changes were presented to Councillors in the workshop on 30 March 2015 and at a further meeting with the Chief Executive Officer on 7 April 2015. The Councillors' comments from these meetings have contributed to the Divisional Boundary options for the 7 Divisional Electorates attached to this report.

Council received a response from the Minister of Infrastructure, Local Government & Planning on 2 April 2015 which is attached to this report.

The Chief Executive Officer has also written to the Electoral Commission of Queensland requesting separate quotations for the cost of conducting the 2016 Quadrennial Local Government Election by either Postal Vote or Attendance Vote at a polling booth. Council has received these quotations from the Electoral Commission Queensland.

BACKGROUND

At the Performance and Services Committee meeting on 24 February 2015, Council passed a number of resolutions in regard to the Electoral Arrangements Report submitted to the Committee for consideration. This report deals with part b. of the resolution reprinted below.

COMMITTEE RESOLUTION

THAT Council write to the Minister for Infrastructure, Local Government and Planning and the Electoral Commissioner Queensland to advise that:

- a. Rockhampton Regional Council is to remain divided;*
- b. A number of divisions are out of quota and Council are unable to conduct a review in accordance with section 16 of Local Government Act 2009 as the information on the number of electors for each division has not been supplied from the Electoral Commission of Queensland. Council requests the information on the number and distribution of electors as soon as possible, so that Council can undertake the review and provide the results of the review to the Minister for Infrastructure, Local Government and Planning and Electoral Commissioner Queensland;***
- c. Rockhampton Regional Council continues to comprise of seven (7) divisions represented by one Councillor per division.*

PREVIOUS DECISIONS

Council passed the following resolutions at the Performance and Services Committee meeting of 24 February 2015.

COMMITTEE RESOLUTION

THAT Council write to the Minister for Infrastructure, Local Government and Planning and the Electoral Commissioner Queensland to advise that:

- a. Rockhampton Regional Council is to remain divided;
- b. A number of divisions are out of quota and Council are unable to conduct a review in accordance with section 16 of Local Government Act 2009 as the information on the number of electors for each division has not been supplied from the Electoral Commission of Queensland. Council requests the information on the number and distribution of electors as soon as possible, so that Council can undertake the review and

provide the results of the review to the Minister for Infrastructure, Local Government and Planning and Electoral Commissioner Queensland;

- c. Rockhampton Regional Council continues to comprise of seven (7) divisions represented by one Councillor per division.

COMMITTEE RESOLUTION

THAT Council write to the Minister for Infrastructure, Local Government and Planning and the Electoral Commissioner Queensland to advise that Rockhampton Regional Council recommends that the Council Division number be renumbered.

COMMITTEE RESOLUTION

THAT Rockhampton Regional Council requests a quotation or indicative cost from the Electoral Commissioner Queensland to conduct the 2016 election for either a polling booth election or a postal vote election.

CONCLUSION

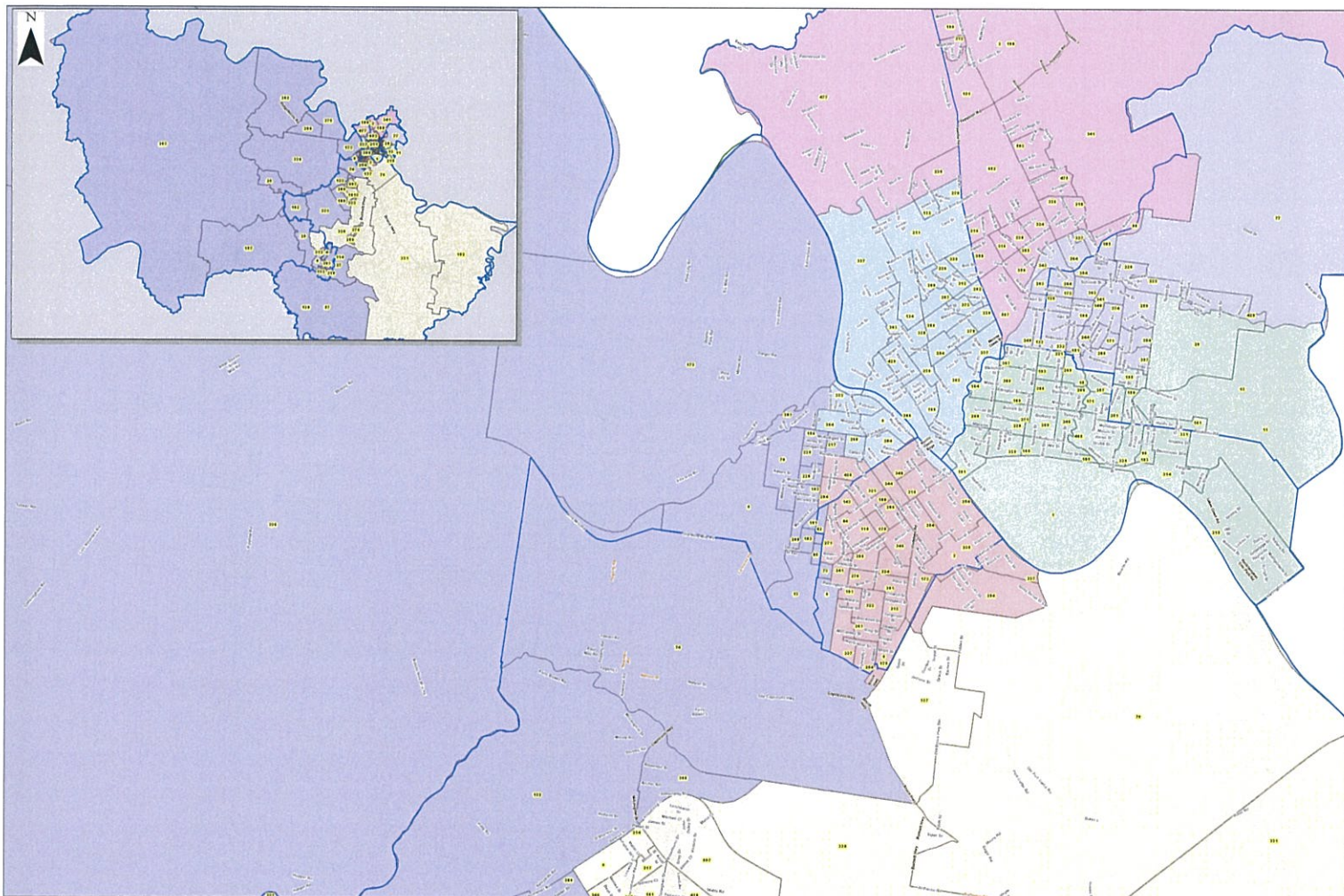
Local Government Divisional Electoral Boundaries:

Following advice from the Department that Council's divisional boundaries are out of quota and therefore require action be taken prior to the 2016 Local Government Elections to bring the Council electoral divisions within the divisional quota criteria, Council officers prepared a number of Divisional Boundary options for Council consideration.

Four options have been prepared for this report and these options have been provided to the Councillors to consider. Council is able to accept one of the options to recommend to the Minister or may alter any of the options they choose. Should Council choose to alter an Option all of the Electoral Divisions need to have between 6711 and 8201 electors.

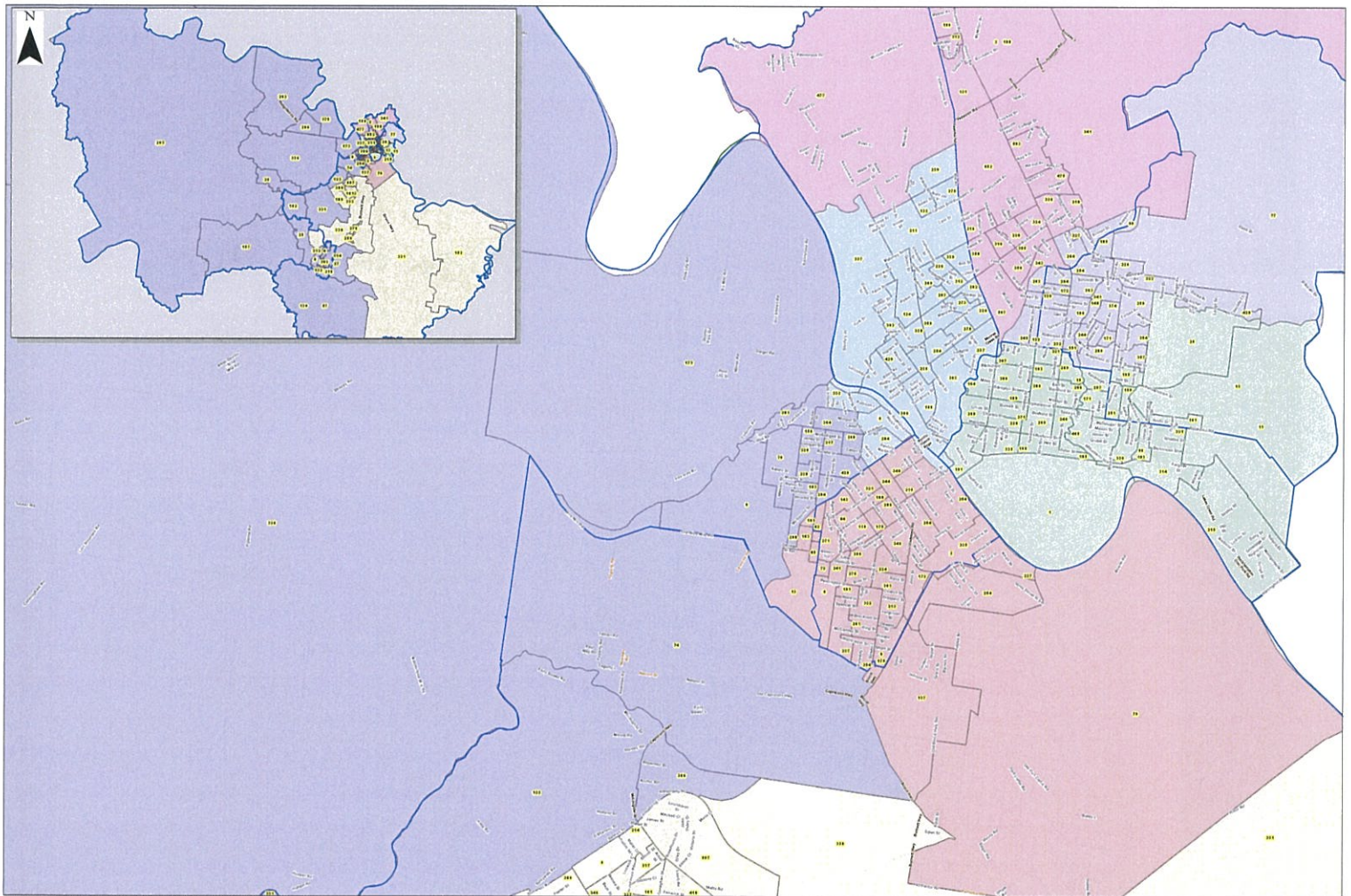
Methods available for Conduct of 2016 Local Government Election:

Council is able to request that the Minister for Infrastructure, Local Government & Planning consider the use of Postal Voting as the Council's preferred method for the conduct of the 2016 Rockhampton Regional Council Local Government election. Council has received indicative costs from Electoral Commission Queensland for the conduct of the next Local Government election. Council asked for a comparison of the costs difference between an Attendance Polling Booth election and a Full Postal Vote election. Council has received the indicative costs for each of the options and the information provided is an attachment to this report.



Copyright protects this publication. Reproduction by whatever means is prohibited without prior written permission of the Chief Executive Officer, Rockhampton Regional Council. Rockhampton Regional Council will not be held liable under any circumstances in connection with or arising out of the use of this data nor does it warrant that the data is error free. Any queries should be directed to the Customer Service Centre, Rockhampton Regional Council or telephone 1800 22 66 77.
The Digital Cadastral Database is current as at March 2015. © The State Government of Queensland

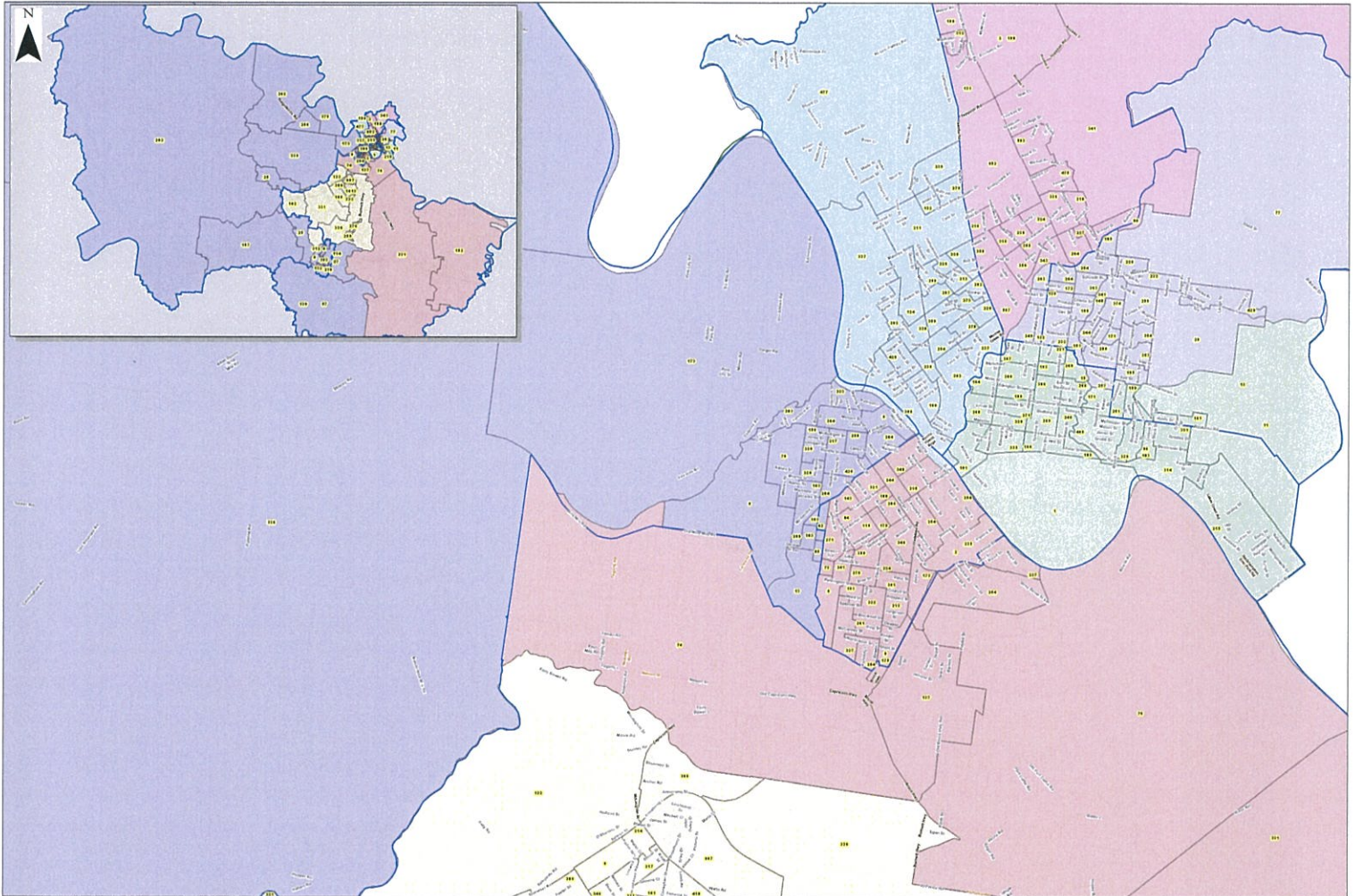
Proposed Divisional Boundaries Option 1



Copyright protects this publication. Reproduction by whatever means is prohibited without prior written permission of the Chief Executive Officer, Rockhampton Regional Council. Rockhampton Regional Council will not be held liable under any circumstances in connection with or arising out of the use of this data nor does it warrant that the data is error free. Any queries should be directed to the Customer Service Centre, Rockhampton Regional Council or telephone 1500 22 65 77.
The Digital Cadastral Database is current as at March 2015. © The State Government of Queensland

1:22,000 at A0

Proposed Divisional Boundaries Option 2



Copyright protects this publication. Reproduction by whatever means is prohibited without prior written permission of the Chief Executive Officer, Rockhampton Regional Council. Rockhampton Regional Council will not be held liable for any inaccuracies or omissions in this publication or any use of the data or data or data in relation to this data in any form. Any queries should be directed to the Customer Service Centre, Rockhampton Regional Council or telephone 1800 22 55 77. The Digital Electoral Database is current as at March 2015. © The State Government of Queensland

Proposed Divisional Boundaries Option 3

Please find attached as requested the four Divisional Boundary options. Below is the elector numbers by Council division for the current and proposed divisional options.

Electoral Division	Starting point Electors	Option 1 Electors (Presented Workshop)	Option 2 Electors	Option 3 Electors	Option 4 Electors
Division 4	9365	7245	7445	7943	7938
Division 5	7745	7632	8054	8060	8060
Division 6	6896	7915	7927	8040	8045
Division 7	6962	7498	7105	6965	6965
Division 8	6783	7671	7671	7199	7199
Division 9	7720	6918	6932	7036	7036
Division 10	6664	7313	7060	6951	6951

Minimum number of electors allowed in a Division: 6711

Maximum number of electors allowed in a Division: 8201

APPENDIX C

**Invitation for Written Submissions
Written Submissions**

QUEENSLAND CHANGE COMMISSION ROCKHAMPTON REGIONAL COUNCIL

INVITATION FOR SUBMISSIONS

The Rockhampton Regional Council has advised that its electoral divisions no longer meet the quota requirements set down in the Local Government Act. The Minister responsible for Local Government has in turn referred the matter to the Change Commission for independent assessment.

The Commission invites written suggestions from interested persons and bodies relating to the council's electoral divisions to be lodged on or before **5.00 pm Friday 29 May 2015**.

For the purpose of this review, the Commission has determined that the average number of enrolled electors for electoral divisions is 7,457. Section 15 of the Act requires the Commission to ensure that the number of enrolled electors in all divisions does not differ from this average by more than 10%. Applying the specified level of tolerance means that the minimum number of electors in each division must be 6,711, with a maximum of 8,202. (These figures are as at 23 February 2015 and may need to be readjusted slightly depending upon population growth between now and the Local Government elections scheduled for March 2016.)

Further information about the review process and advice on formulating suggestions may be found on the Electoral Commission of Queensland website under Local Government Reviews.

Suggestions should be marked ROCKHAMPTON REGIONAL and be lodged as follows:-

- by posting to:
Change Commissioner,
Local Government Change Commission
GPO Box 1393, BRISBANE, QLD 4001
- by personal delivery, between the hours of 9.00 am and 5.00 pm to:
Electoral Commission of Queensland,
Level 6, Forestry House,
160 Mary Street, Brisbane
- by email to rockhamptonregionalcouncilreview@ecq.qld.gov.au or
- online form.

It would assist the Commission if anyone intending to submit maps with written suggestions could do so by using maps of the present divisions which are available on the Commission's website, or by contacting the Commission on 1300 881 665 for assistance.

If you wish to lodge a submission, please note that all submissions will be published in their entirety (including name and address details) on the Commission's website.

Walter van der Merwe

**Change Commissioner
Electoral Commission of Queensland**

Blaze066376

Ref: Rockhampton Regional Council

21 May 2015

Change Commissioner
Local Government Change Commission
GPO Box 1393
BRISBANE QLD 4001

rockhamptonegionalcouncilreview@ecq.qld.gov.au

This submission wishes to make several important points in support of the boundaries of Division 7 being retained as they are.

Presently the Division is contained within the clearly defined, natural borders of Ramsey Creek in the North; Moore's Creek in the South; Yaamba Road (principally the Bruce Highway) in the East and the Fitzroy River in the West.

There is significant capacity for population growth within these exiting boundaries thereby ensuring the existing boundaries could remain constant.

The Old Glenmore Estate was developed during the 1980's and in more recent years there has been steady population growth in the nearby Riverside Estate, which is ongoing.

There is also growth in housing development in the new Edenbrook Estate which is north of the Old Glenmore Estate. Also, a significantly larger housing development, commonly known as the "Stockland development" has been approved for some time on nearby land adjoining the Bruce Highway. Relying on data already available in the public domain the Council projects the future combined growth of both developments will see the population of this area grow by some 7000 within the next 10 years or thereabouts. This submission argues that it would best suit the purposes of efficiency to maintain the existing boundaries so as to accommodate this future growth without having to put the community through the disruption of future changes.

Clearly, maintaining the present boundaries as they are, offers a logical and less disruptive alternative to, say, taking part of the constituency across the Fitzroy River.

Presently, the greater part of Division 7 is made up of the homogenous communities of Park Avenue and Kawana. An alteration to the current boundaries would arguably jeopardize the strong community of interest which exists here.

The communities within Division 7 are meshed together by roads and Streets of major significance. These include: Alexandra Street, which when joined with Belmont Road and Hinchliffe Street stretches from the northern boundary to the southern boundary. Similarly,

Main Street, Park Avenue stretches from the eastern boundary to the western boundary, as do Richardson Road and Farm Street.

Division 7 has numerous schools providing preschool, prep, primary and high school education to local children.

There are well established local shops in Main Street Park Avenue and Richardson Road, Kawana. The Park Avenue Post Office in Main Street has been in continuous operation since the earliest days of settlement post-World War 1. Many residents, particularly the significant numbers of older residents, rely on the services this facility provides.

In conclusion, in asking that the present boundaries of Division 7 remain the same, this submission relies on the fact that there are presently well defined natural boundaries. The present boundaries provide for significant future growth in population and, finally, alteration of the boundaries would have a disruptive influence on the communities contained within the Division.

In closing, and on a more personal note, I ask that the Commission take into consideration that I, the submitter, am the Managing Director of the JM Kelly Group of Companies, a firm that is based in Park Avenue which employs some 400 local staff. I have lived in Park Avenue for the past 54 years, I am a very active member of our local community and I care passionately about its future.

Would you please be so kind as to give favourable consideration to what I have submitted.

Thank you.

Yours sincerely


Geoff Murphy

ROCKHAMPTON REGIONAL

Change Commissioner,
Local Government Change Commission
GPO Box 1393, BRISBANE, QLD 4001

I would like to make my suggestions for the expansion of the council division that I reside in as part of the Rockhampton Regional Council. My current division (Division 10) is bounded by the Berserker Mountains in the east, Rockonia Road in the south to Moore's Creek in the north and Berserker and Dean Street to the west. I note that this division has been deemed as under quota. I would hate to think that this will see this hillside council division being carved up and losing its hillside identity.

I would like to suggest to the electoral commission that to increase the population of Division 10 this division be expanded to the north so it bounds Yeppoon Road, Norman Road, Foulkes Street and to follow the hillside towards Moore's Creek to take in the Sanctuary Estate, which takes in the streets bounded by German Street, Sunset Drive, Haven Court and Retreat Avenue. The SA Boundary number of 3121308.

I believe that this would see an adequate number of eligible voters to meet the Electoral Commissions required quota. This would also allow an increasing population as the new estate areas develop.

I would like to thank the Electoral Commission to place my proposal and again highlight my concern that a carve up of Division 10 would not be in the best interest of the people currently residing in the division.

Respectfully



Tony Ponicke

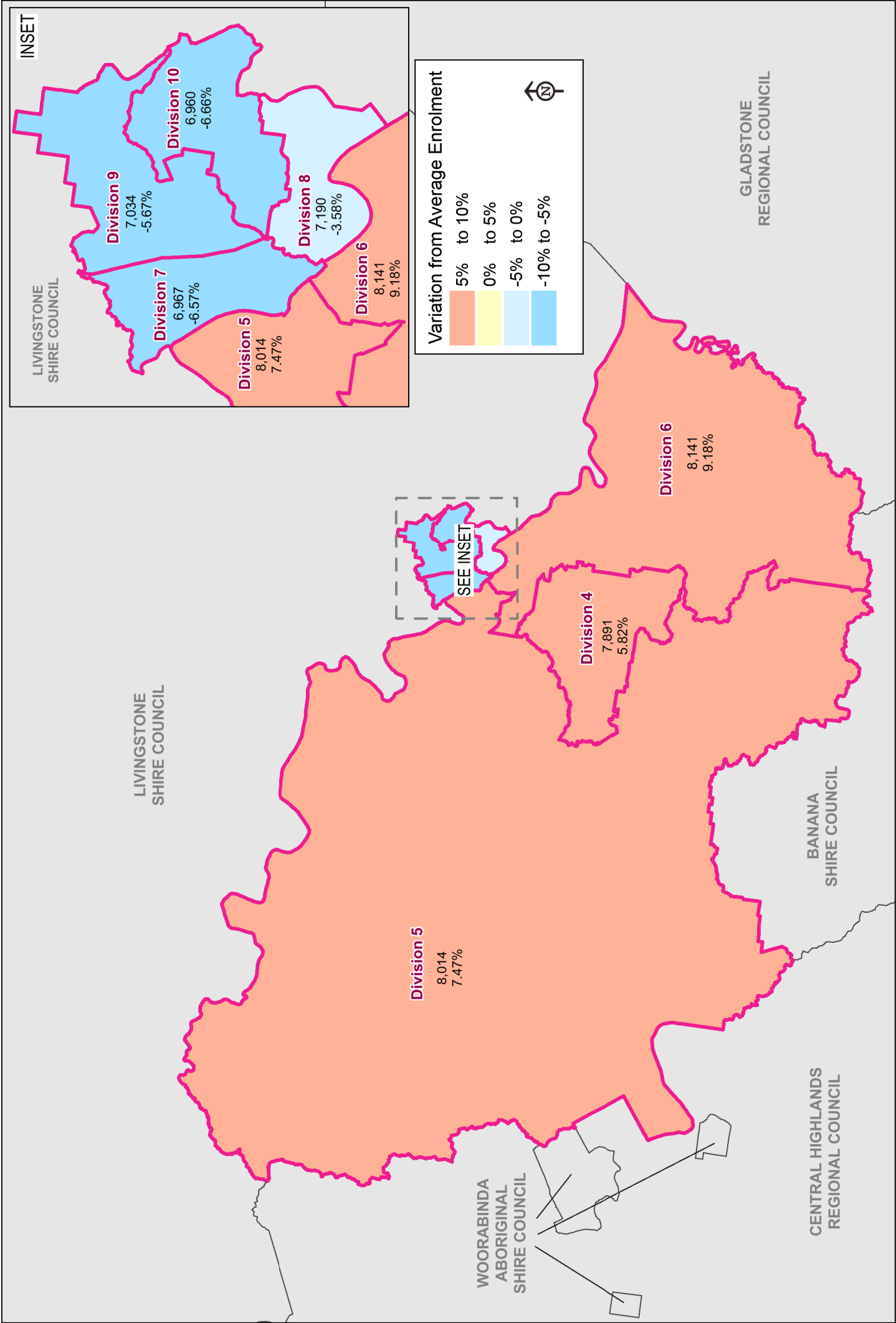
APPENDIX D

Change Commission's Proposed Determination

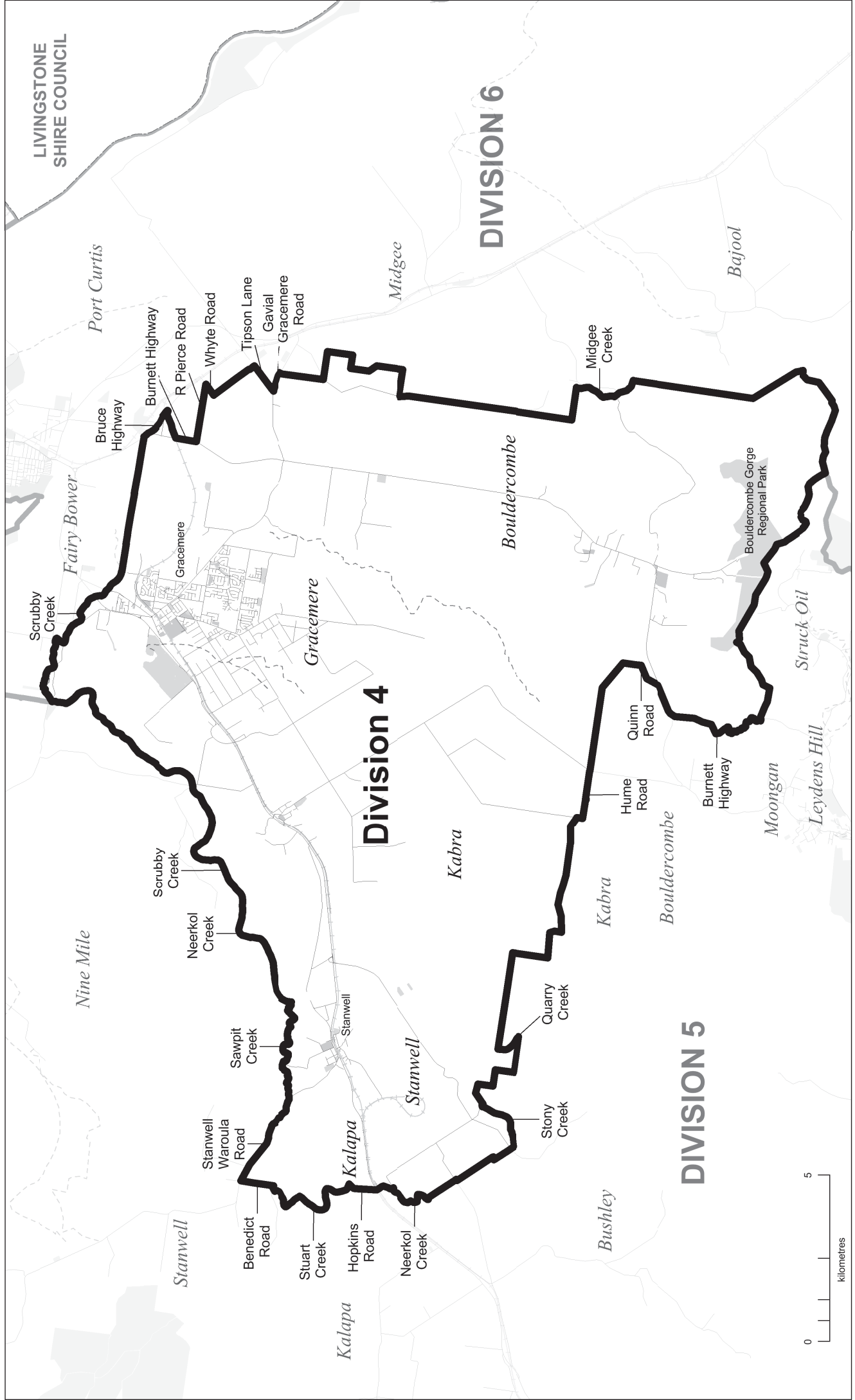
ROCKHAMPTON REGIONAL COUNCIL

6,841	Proje
8,362	Proje

ROCKHAMPTON REGIONAL COUNCIL PROPOSED DIVISION BOUNDARIES

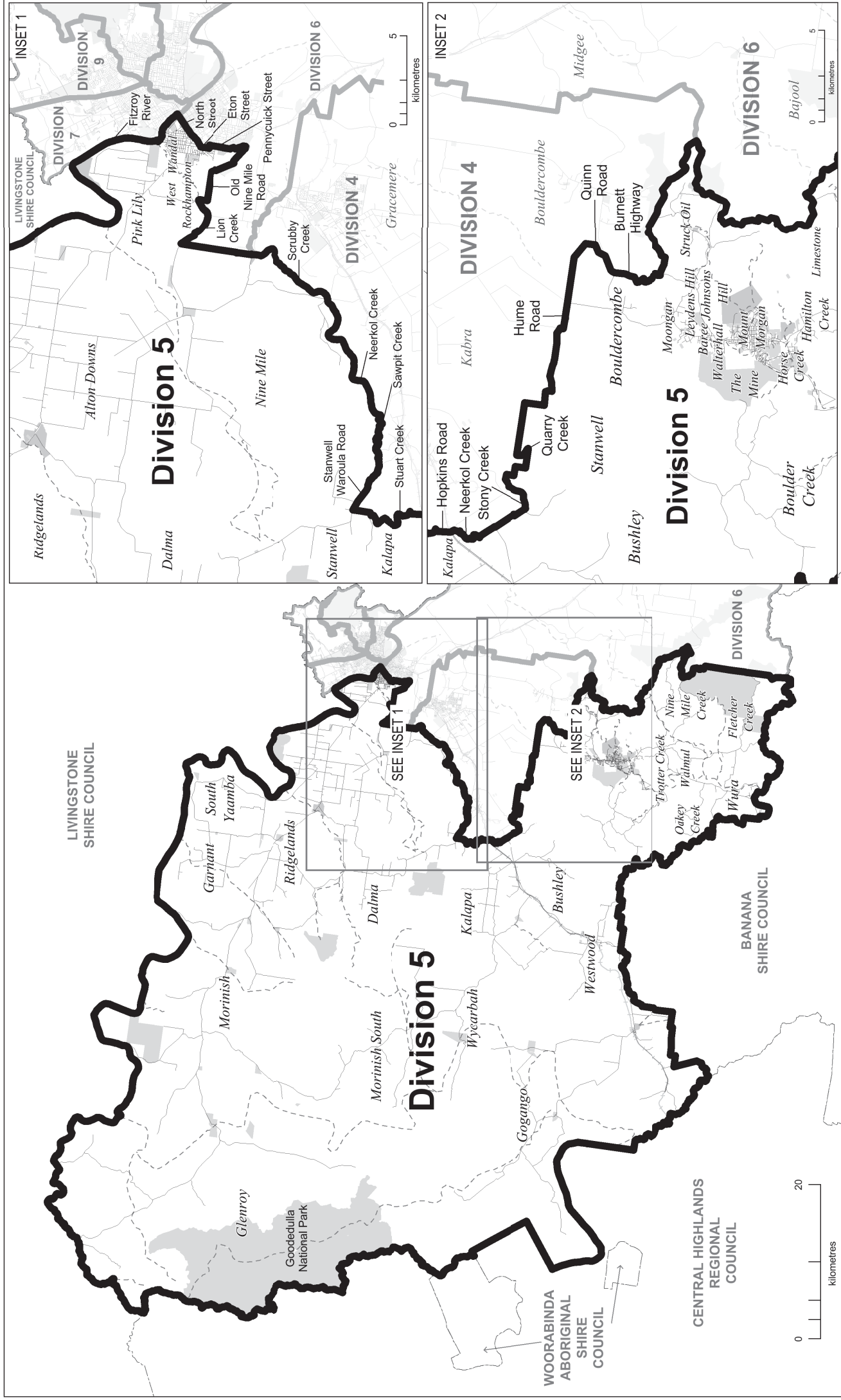


DIVISION 4



- Proposed Division Boundary
- Proposed Adjacent Division Boundary
- Road
- Railway
- Watercourse
- Waterbody
- Park / Reserve

DIVISION 5



2015 PROPOSED DIVISIONAL BOUNDARIES

DIVISION 6



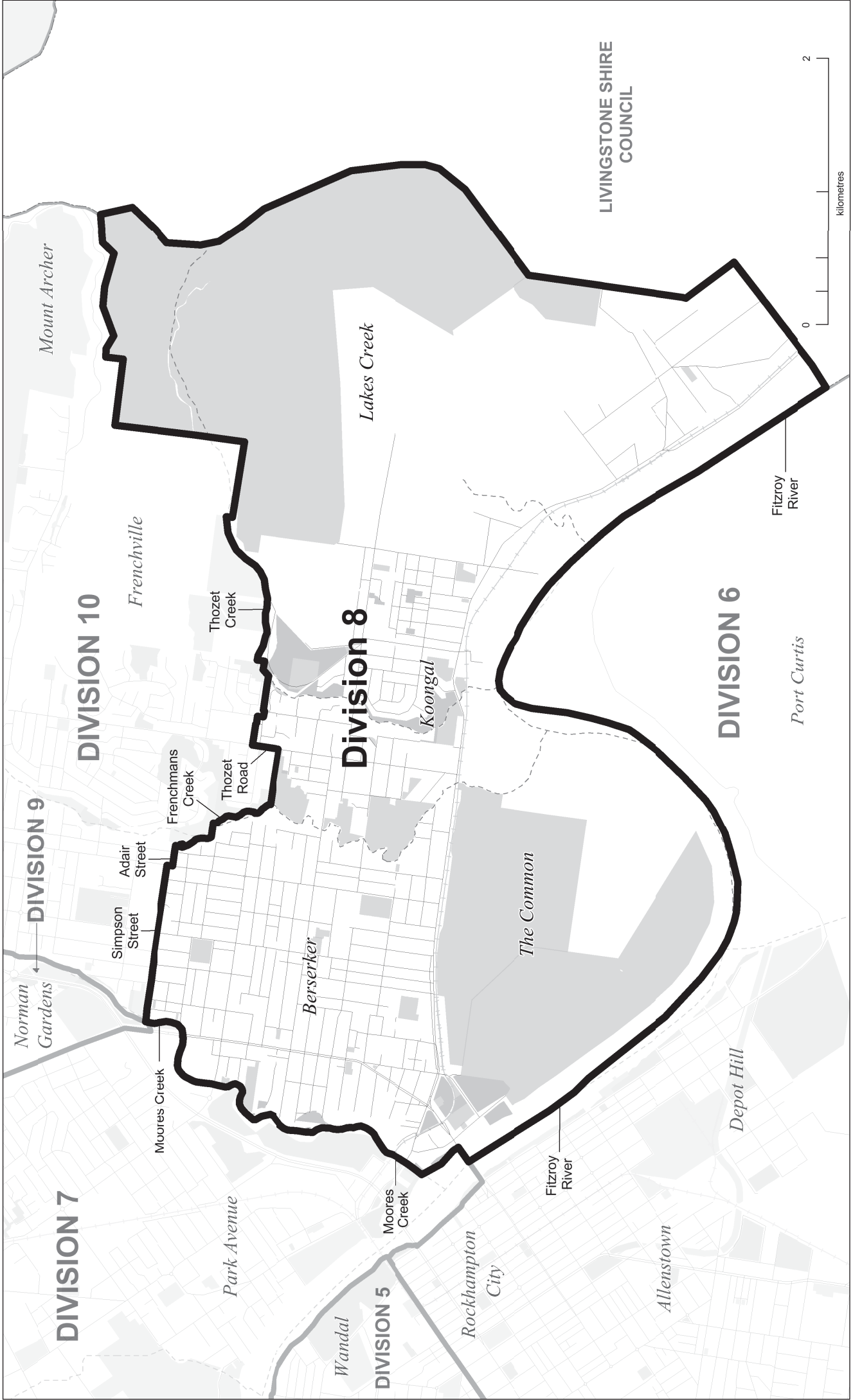
2015 PROPOSED DIVISIONAL BOUNDARIES

DIVISION 7



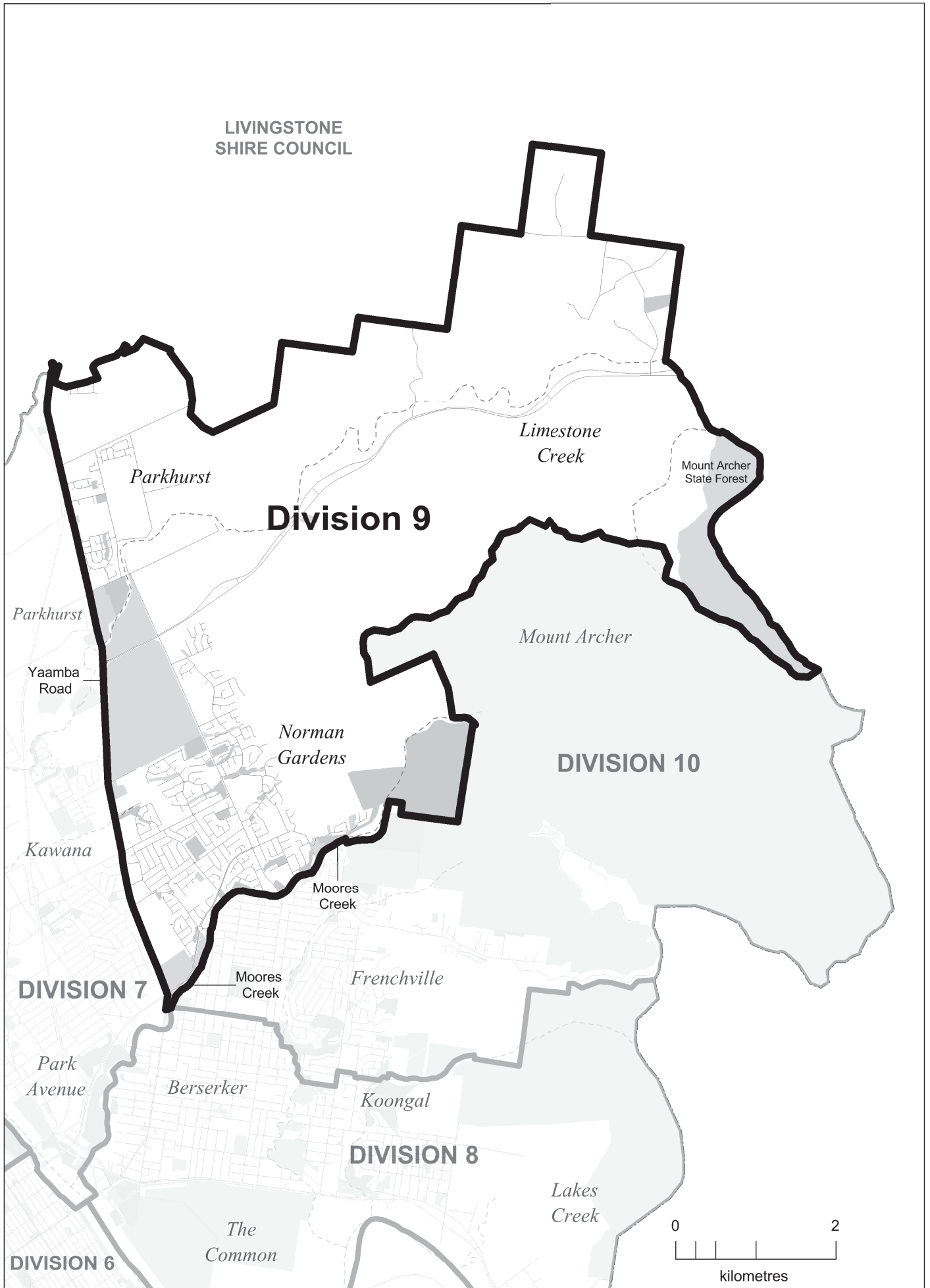
2015 PROPOSED DIVISIONAL BOUNDARIES

DIVISION 8

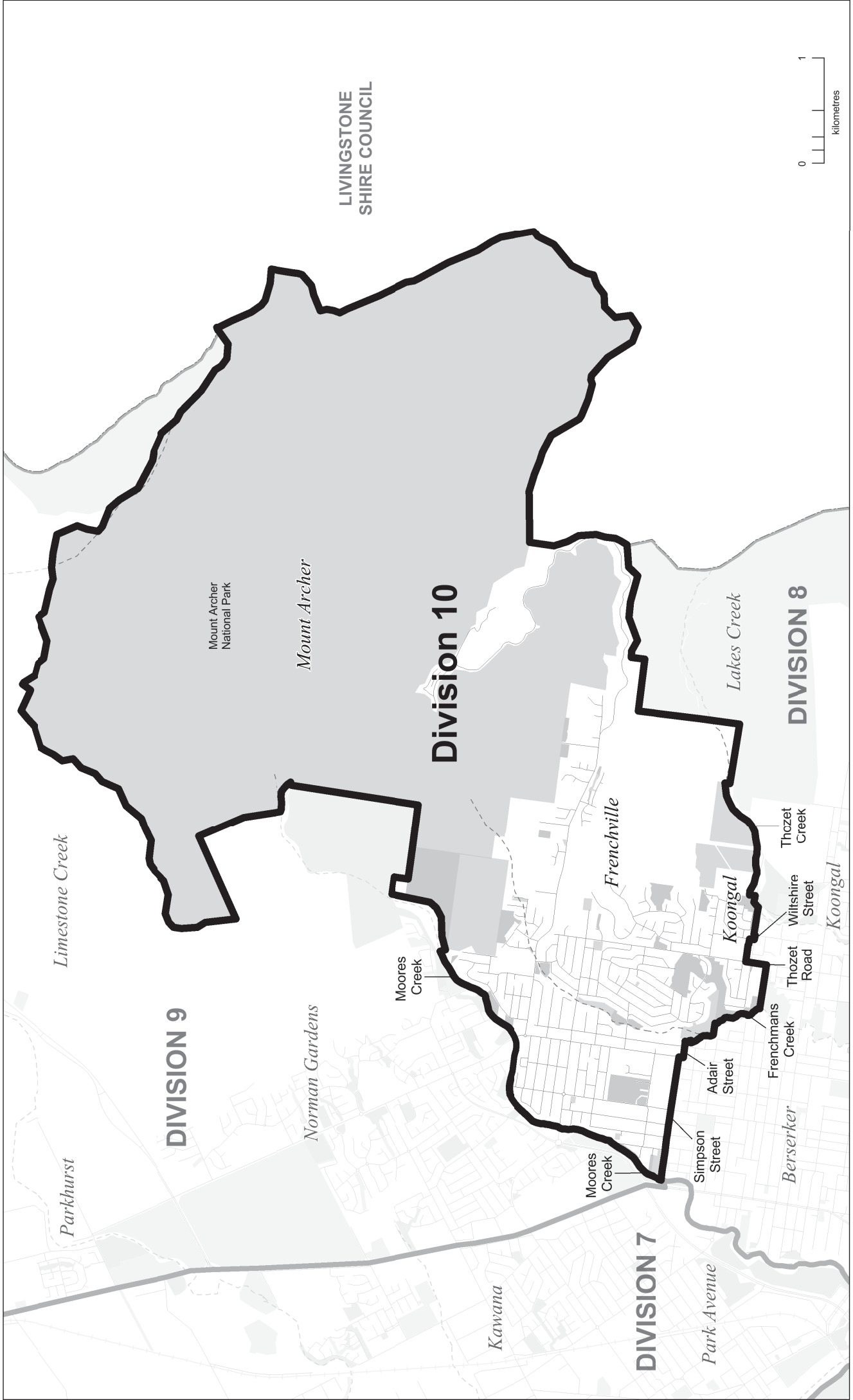


- Proposed Division Boundary
- Proposed Adjacent Division Boundary
- Road
- Railway
- Watercourse
- Waterbody
- Park / Reserve

DIVISION 9



DIVISION 10



Proposed Division Boundary

Proposed Adjacent Division Boundary

Road

Railway

Watercourse

Waterbody

Park / Reserve

APPENDIX E

Invitation for Objections to the Proposal

Comments to the Proposed Determination

LOCAL GOVERNMENT CHANGE COMMISSION

ROCKHAMPTON REGIONAL COUNCIL

INVITATION FOR OBJECTIONS TO THE PROPOSAL

The Rockhampton Regional Council has advised that its electoral divisions no longer meet the quota requirements set down in the *Local Government Act 2009* (Act). The Minister responsible for Local Government has in turn referred the matter to the Local Government Change Commission for an independent assessment.

The Commission now invites written objections from interested persons and bodies' relating to the council's proposed seven electoral divisions, to be lodged on or before **5.00pm Friday 21 August 2015**.

For this phase of the review, the enrolment for Rockhampton Regional Council as at 23 February 2015 is being used. The total enrolment was 52,197. The Commission has determined that 7,457 is the reasonable proportion of electors for an electoral division. Section 17 of the Act requires the Commission to ensure that the number of enrolled electors in all divisions does not differ from this reasonable proportion by $\pm 10\%$. In order to meet the enrolment criteria set out in the Act, the number of electors in each division must be within the minimum of 6,711 and the maximum of 8,202. Furthermore, the Act requires that the reasonable proportion of electors must be worked out as near as practicable to the time when the change is to happen to ensure demographic representation for each division of Rockhampton Regional Council. Projected enrolment for March 2016 and February 2019 has been used to assist with this requirement.

Further information about the review process, reference material, maps, guidelines and advice on preparing objections to the proposal may be found on the Electoral Commission Queensland (ECQ) website (www.ecq.qld.gov.au); under ELECTORAL DISTRICTS then LOCAL GOVERNMENT AREAS then LOCAL GOVERNMENT REVIEWS then click Rockhampton Regional.

Anyone interested in lodging an objection should note that all objections will be published on the Commission's website in their entirety and in a publication.

Objections should be marked ROCKHAMPTON REGIONAL and may be:

- posted to: Local Government Change Commission, GPO Box 1393, BRISBANE, QLD 4001 or
- personally delivered to:
Electoral Commission Queensland, Level 6, Forestry House,
160 Mary Street, Brisbane, between the hours of 9.00 am and 5.00 pm or
- lodged by email to: rockhamptonregionalcouncilreview@ecq.qld.gov.au or
- lodged via online form:
Which can be found on the ECQ website (www.ecq.qld.gov.au) under ELECTORAL DISTRICTS then
LOCAL GOVERNMENT AREAS then LOCAL GOVERNMENT REVIEWS then click on
Rockhampton Regional and scroll to the bottom of the Proposed Determination Section.

It would assist the Commission if anyone intending to submit objections accompanies them with the electronic mapping data if this has been prepared, preferably in MapInfo and/or KML format in projection GDA94 – Longitude/Latitude (Australia GDA94).

For any assistance related to the review matter please refer to the Commission's website, or contact the Commission on 1300 881 665 for assistance.

Walter van der Merwe

**Change Commissioner
Electoral Commission of Queensland**

Blaze072312

20 August 2015

Mr Greg Rowe
Change Commissioner
Electoral Commission Queensland
GPO Box 1393
BRISBANE QLD 4000

Our Ref: 5827
Your Ref: LG/000543
Enquiries: Shane Turner
Telephone: 07 4936 8305
Facsimile: 1300 22 55 79
Email: shane.turner@rrc.qld.gov.au

Dear Mr Rowe

RE: Local Government Change Review – Review of Internal Divisional Boundaries

I refer to your email of 31 July 2015 to the Chief Executive Officer, concerning the Change Commission's review of Council's Internal Divisional Boundaries.

As a result of the proposed changes to the Council's preferred Option 3 submission by the Local Government Change Commission, a report on the ECQ proposal has been presented to the Ordinary Council meeting on 11 August 2015 to seek the Council's direction.

As a result of the report to Council, I am required to make the following submission:

- Council accepts the Change Commission's alterations to Divisions 4 & 5;
- Council suggests that a change be made to Division 7 boundary. We request that where the proposed Divisions 7, 8, 9 & 10 intersect in Moores Creek, that the Division 7 Boundary be realigned to the Moores Creek end in line with Simpson Street (please refer to attached diagram). There are no electors with this triangular portion and it is unlikely there will be in the future. This minor change will provide more uniform boundaries for these divisions. The tenure of this section appears to be a mix of Road Reserve, Unallocated State Land & Council Reserve;
- The Council has requested that the change to the Fitzroy River boundary of Division 7 be returned to the centre of the river as it is in Proposed Divisions 5, 6 & 8;
- When re-numbering Divisions 8, 9 & 10 Council has requested that:
 - Division 9 be re-numbered **Division 1**
 - Division 10 be re-numbered **Division 2**
 - Division 8 be re-numbered **Division 3**

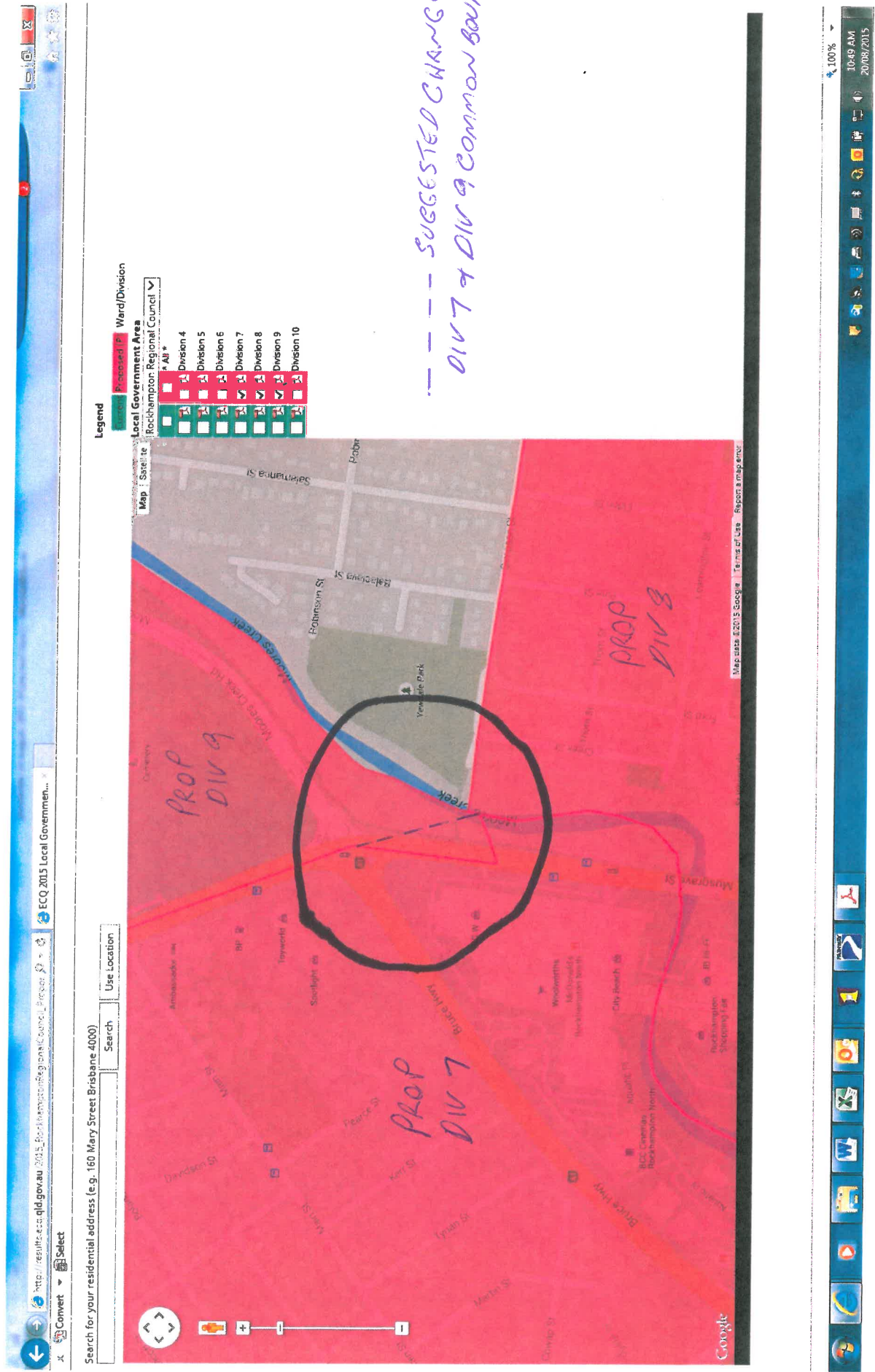
The Councillors believe this will provide a better geographical flow to these divisions.

Please do not hesitate to contact my office if more information is required.

Yours faithfully



Evan Pardon
Chief Executive Officer



----- SUGGESTED CHANGE TO
DIV 7 & DIV 9 COMMON BOUNDARY

21 August 2015

Change Commissioner
Local Government Change Commission
GPO Box 1393
Brisbane QLD 4001

Ref: Rockhampton Regional Council

As a past candidate for the position of Councillor for Division 8, I support in principle the Electoral Commission's proposal for the 2016 Rockhampton Regional Council elections. With one exception I believe that one important change should be made.

The 704 electors from Division 9 along Moore's Creek to Berserker Street and Simpson Street become electors of Division 8. That would then eliminate the need to move any of the 684 electors in Koongal and Lakes Creek area north of Rockonia Road and west to Thozet Road from Division 10.

My reason for suggesting this change is the Division 8 is clearly contained by two prominent natural features Moore's Creek to the west and the Fitzroy River to the south. Then Berserker Street and Thozet Road would form the boundary to the east with Simpson Street and Rockonia Road to the north.

Yours sincerely



Carl Brown

From: [Desley Cowley](#)
To: [Rockhampton Regional Council Review](#)
Subject: re Divisional voting concerns - Rockhampton Regional Council
Date: Tuesday, 11 August 2015 5:13:39 PM
Attachments: [Spruiker_Hire_Logo\[RGB\] email signature.jpg](#)

Thank you for the opportunity to consider the boundary review currently in progress for Rockhampton.

I have no objection to the changes in boundary alignment, however I object strongly to the voting process itself.

The current situation in Rockhampton as I understand it is that as a resident:

I am able to vote for the Mayor and the divisional councillor representing the division in which I reside.

The decision to abolish divisional voting rests with councillors themselves

I personally believe strongly that as a resident and ratepayer in Rockhampton I should be able to vote for every councillor and not just the one responsible for my decision.

The entire community relies on councillors working together and the current voting system, I believe allows for:

- a potentially dysfunctional council that doesn't work together
- councillors have been voted in on a very low percentage of the entire community vote are making decisions for the entire community.

I want to make very clear, I have no political or personal affiliations or grievances with any of the current councillors. I believe they all genuinely have the interests of Rockhampton Region foremost in their minds.

I feel it's important that every resident of the region gets to vote for every councillor.

Could you please advise what action I can take to facilitate a change in the event that our current councillors don't initiate a change in the voting procedures for our region..what we can do as a community to drive change.

I'd appreciate a prompt response.

Many thanks
Des

Desley Cowley

From: [Rob Bosel](#)
To: [Rockhampton Regional Council Review](#)
Subject: Objection to Proposal - Rockhampton Regional Council Division 8
Date: Friday, 21 August 2015 4:09:51 PM

Ref: Rockhampton Regional Council

21 August 2015

Change Commissioner
Local Government Change Commission
GPO Box 1393
Brisbane QLD 4001
Fax 07 3036 5776.

Why make such a wholesale change to the existing council division 8? The most noticeable features of Division 8 has been its boundary of the Fitzroy River and Moore's Creek. I note that in the proposed boundary changes these key features appear to have been split in two with Division 10.

I acknowledge that both my division (Division 8) and Division 10 require extra electors. I would like to propose a simple amendment to the Electoral Commission's proposal.

I propose placing the 704 electors from Division 9 along Moore's Creek to Berserker Street and Simpson Street into Division 8. Then keep the 684 electors who already reside in Division 10 from the Koongal and Lakes Creek area north of Rockonia Road and west to Thozet Road.

My recommendation would retain the boundary integrity of both my division and Division 10 and is as follows:

- Add 704 electors from Division 9 along Moore's Creek to Berserker Street and Simpson Street and add to Division 8
- And keep all 684 electors in Koongal and Lakes Creek area north of Rockonia Road and west to Thozet Road in Division 10.

The net result is only a difference of 20 extra electors now in division 8 over division 10.

I hope this meets with your approval.

Yours sincerely

Rob Bosel

From: no-reply@ecq.qld.gov.au
To: [Reviews](#)
Subject: Feedback Form Received from Michael McCabe
Date: Monday, 3 August 2015 12:43:08 PM

Name: Michael McCabe

Council: Rockhampton Regional

Additional Information: The electoral divisions in Rockhampton are not necessary and should be abolished. The size of the population and compact geographic size of Rockhampton and the commonality of issues across the region would best be served by amalgamation into a single division.

From: no-reply@ecq.qld.gov.au [mailto:no-reply@ecq.qld.gov.au]

Sent: Friday, 21 August 2015 9:03 AM

To: Reviews

Subject: Feedback Form Received from Susan Cunningham

Name: Susan Cunningham

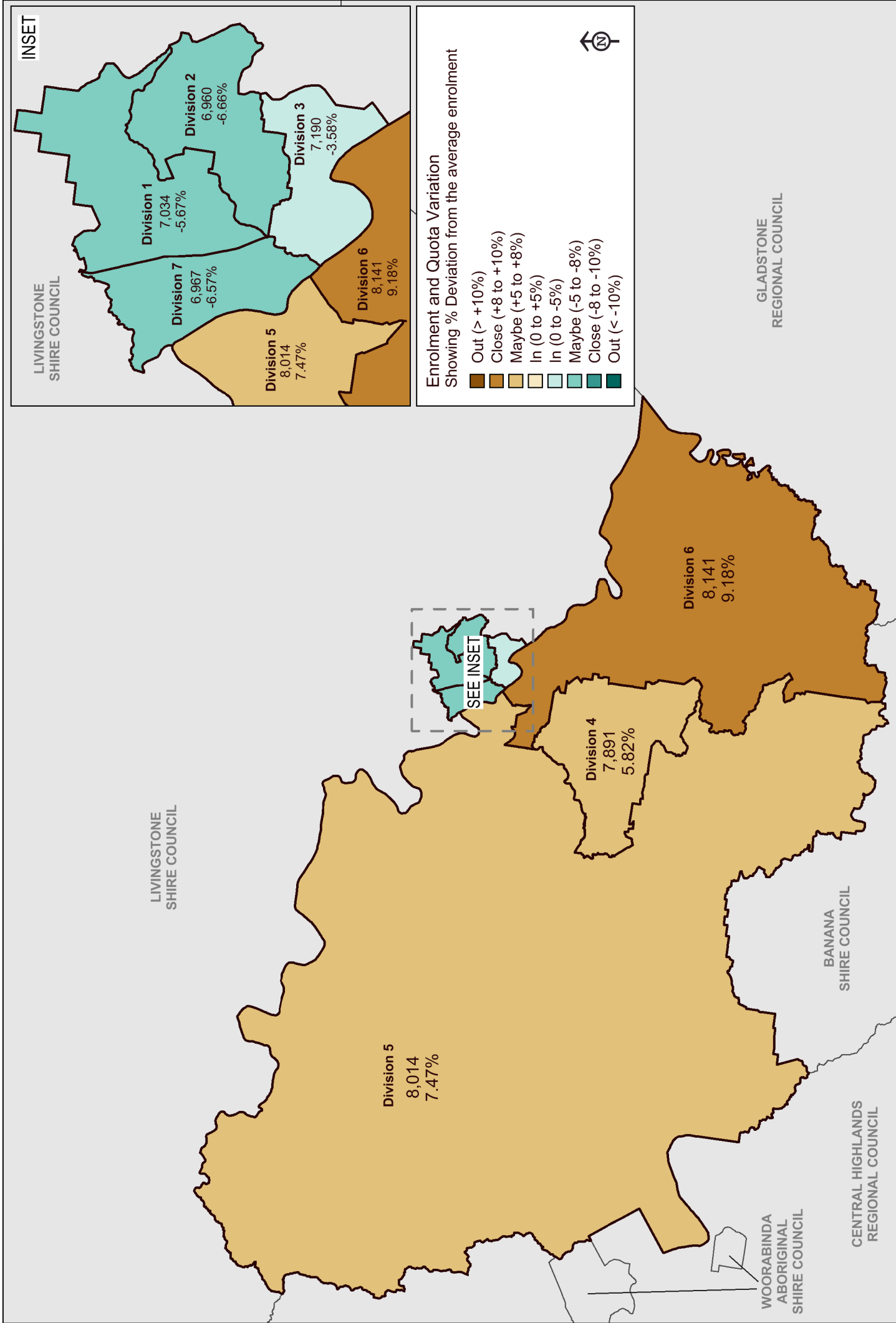
Council: Rockhampton Regional

Additional Information: I have read the report and viewed the maps of proposed new divisional boundaries, and I support the proposed changes.

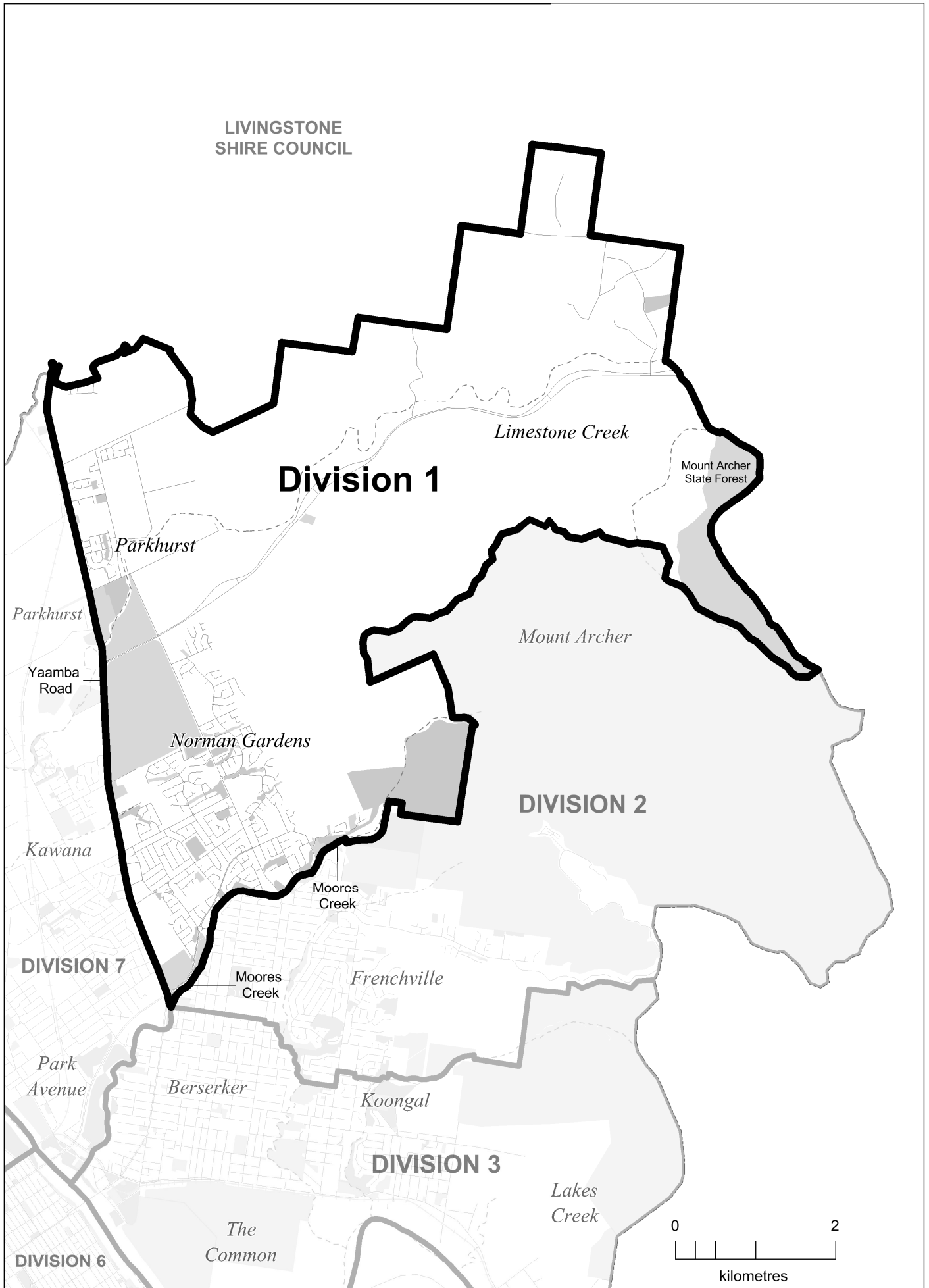
APPENDIX F

**Maps of Council's Electoral
Divisions for 2016 Elections**

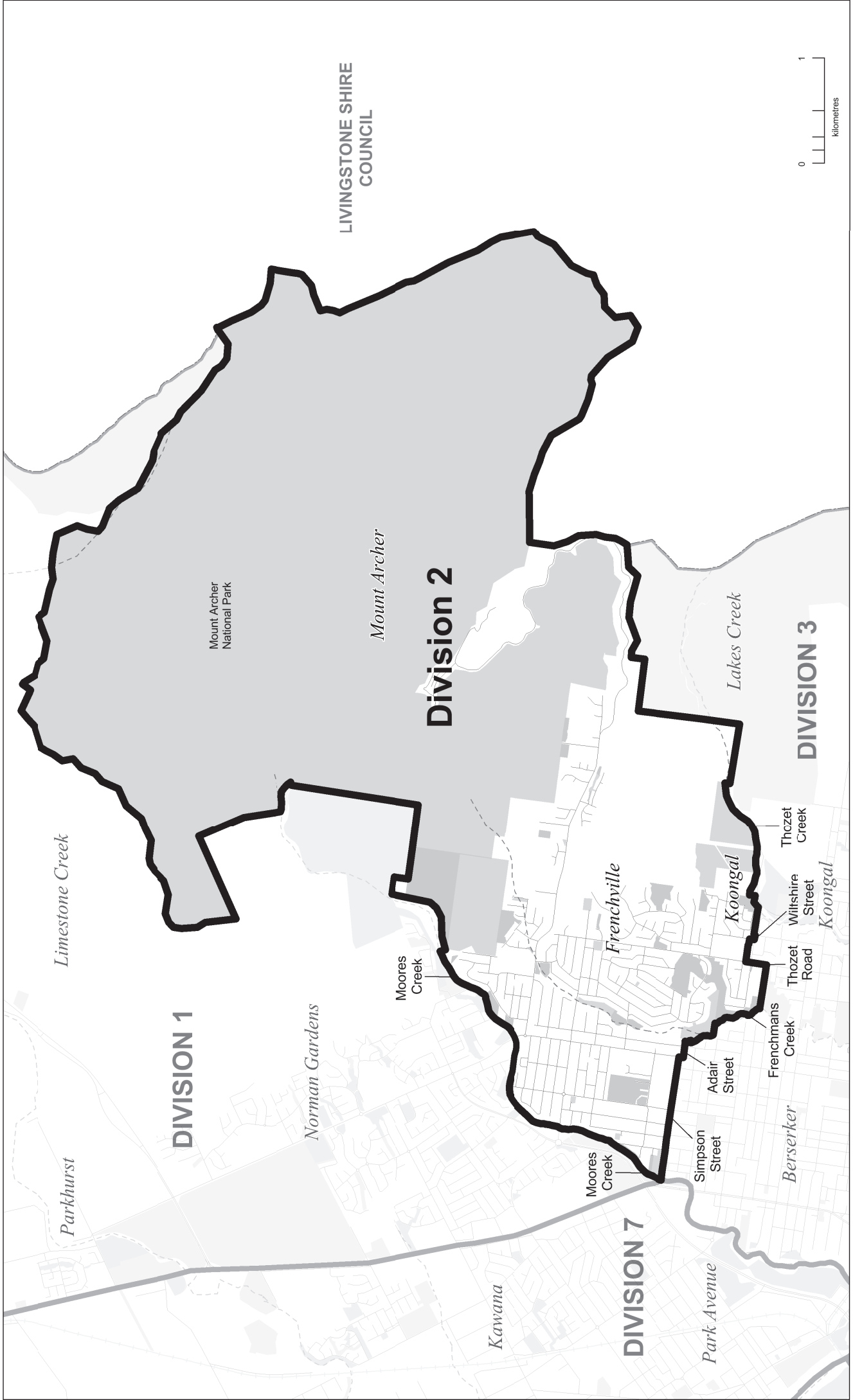
ROCKHAMPTON REGIONAL COUNCIL FINAL DIVISION BOUNDARIES



DIVISION 1



DIVISION 2

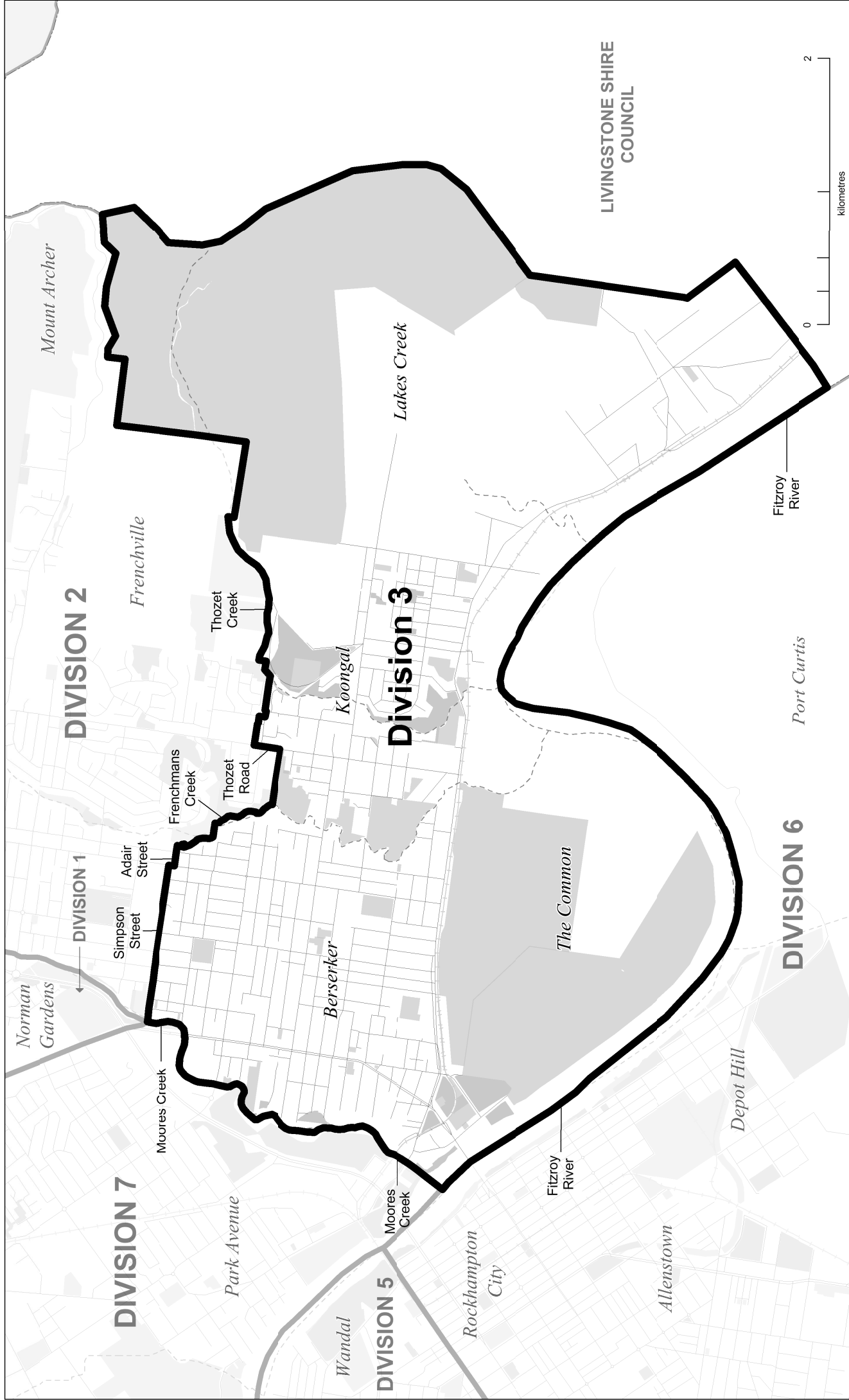


Division Boundary
 Adjacent Division Boundary
 Road
 Railway
 Watercourse
 Waterbody
 Park / Reserve



2015 DIVISIONAL BOUNDARIES

DIVISION 3

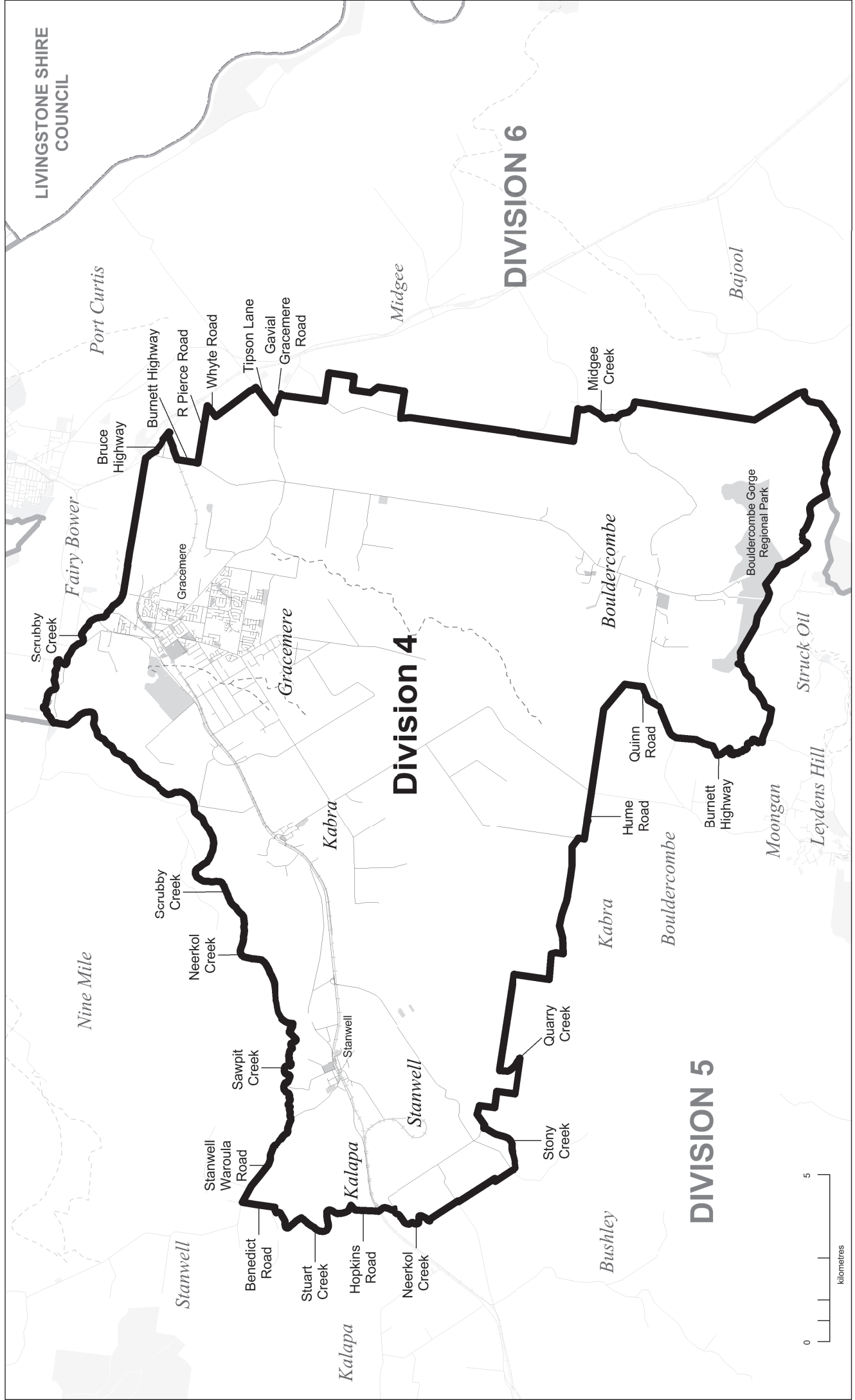


Division Boundary
Adjacent Division Boundary
Road
Railway
Watercourse
Waterbody
Park / Reserve

0 2
kilometres

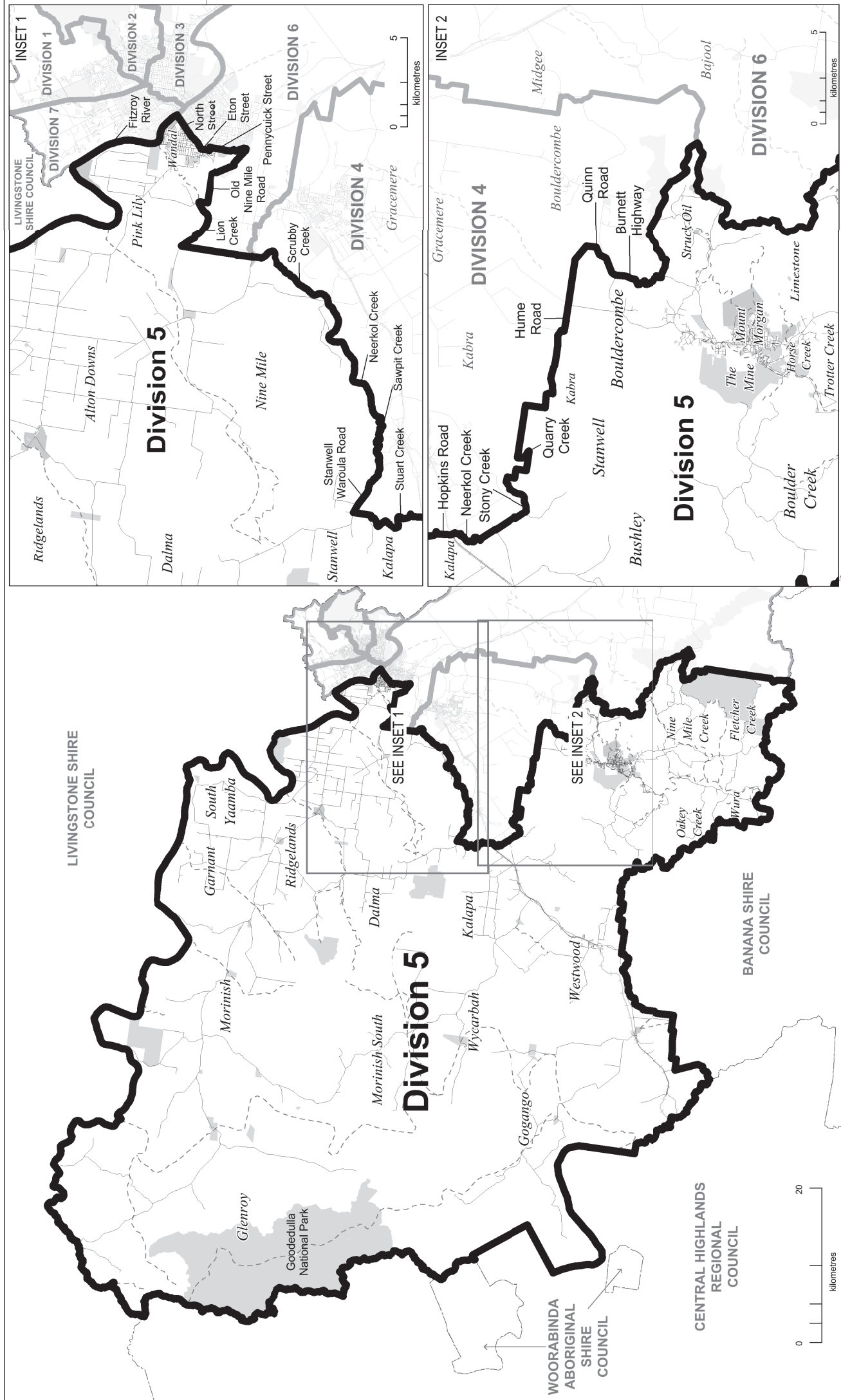
2015 DIVISIONAL BOUNDARIES

DIVISION 4

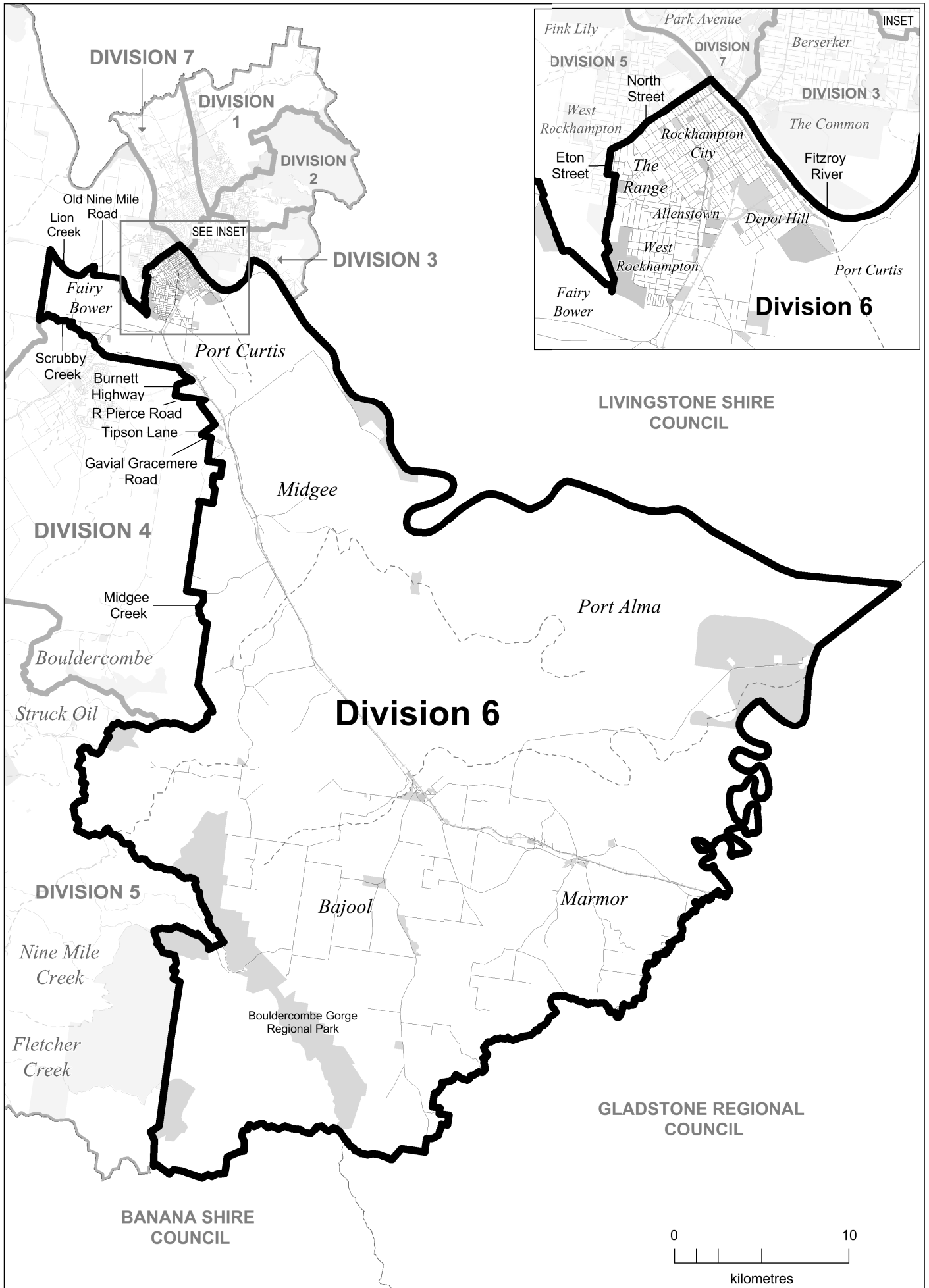


- Division Boundary
- Adjacent Division Boundary
- Road
- Railway
- Watercourse
- Waterbody
- Park / Reserve

DIVISION 5



DIVISION 6



DIVISION 7

