



# **LOCAL GOVERNMENT CHANGE COMMISSION**

**2015**

## **REDIVISION OF ELECTORAL DIVISIONS WITHIN ISAAC REGIONAL COUNCIL**

### **FINAL DETERMINATION**

**OCTOBER 2015**





# **LOCAL GOVERNMENT CHANGE COMMISSION**

## **2015 REDIVISION OF ELECTORAL DIVISIONS WITHIN ISAAC REGIONAL COUNCIL FINAL DETERMINATION**

**OCTOBER 2015**

Electoral Commission of Queensland  
Level 6, 160 Mary Street, Brisbane QLD 4000  
GPO Box 1393, Brisbane QLD 4001

Telephone: 1300 881 665  
Facsimile: (07) 3036 5776  
Website: [www.ecq.qld.gov.au](http://www.ecq.qld.gov.au)



## TABLE OF CONTENTS

<b>FOREWORD .....</b>	<b>3</b>
<b>CHAPTER 1 – INTRODUCTION .....</b>	<b>4</b>
TERMS OF REFERENCE .....	4
LEGISLATIVE PROVISIONS .....	4
DETERMINING THE QUOTA.....	4
<i>Technical Process</i> .....	5
Table 1 – Enrolment, Projections and Averages.....	5
<b>CHAPTER 2 – THE REVIEW PROCESS .....</b>	<b>6</b>
<b>CHAPTER 3 – FINAL DETERMINATION.....</b>	<b>7</b>
CURRENT ENROLMENT.....	7
Table 2 – Summary of Enrolments for the Current Electoral Divisions.....	7
PROPOSED DETERMINATION.....	8
OBJECTION TO THE PROPOSED DETERMINATION.....	8
FINAL DETERMINATION.....	8
Table 3 – Summary of Enrolments for the Final Electoral Divisions .....	9
<b>APPENDIX A</b> Previous Electoral Divisions	
<b>APPENDIX B</b> Minister’s Referral and Council’s Correspondence	
<b>APPENDIX C</b> Invitation for Written Submissions	
<b>APPENDIX D</b> Change Commission’s Proposed Determination	
<b>APPENDIX E</b> Invitation for Objections to the Proposal	
<b>APPENDIX F</b> Maps of Council's Electoral Divisions for 2016 Elections	



## FOREWORD

This report outlines the Final Determination for the redivision of electoral divisions within Isaac Regional Council.

The *Local Government Act 2009 (Qld)* (the Act) provides for a Local Government Change Commission (the Change Commission) to conduct the assessment phase of the boundary change process. The Act also provides for the Change Commission to be the appointed independent assessment body for boundary changes within Isaac Regional Council.

The Change Commission is made up of the Electoral Commissioner or a combination of the Electoral Commissioner, the Deputy Electoral Commissioner and a casual Commissioner. The Change Commission for this review is made up of:

- Mr Walter van der Merwe, Electoral Commissioner; and
- Mr Gregory Rowe, casual Commissioner (appointed on 13 November 2015 for three years by the Governor in Council).

On 2 April 2015 a reference was made to the Change Commission by the Minister responsible for Local Government (see Appendix B).

For electoral purposes Isaac Regional Council is divided into eight electoral divisions. This report outlines the Change Commission's Final Determination for the boundaries of the divisions. It also sets out the reasons for the Change Commission's determination. The Change Commission's proposal was adopted unanimously at a meeting held on Friday 9 October 2015, both Commissioners were present.

Chapter 1 of this report provides an introduction to the Change Commission's requirements for undertaking an assessment of the internal boundaries. Chapter 2 presents a summary of the review process that was undertaken. A more detailed outline of the Final Determination appears in Chapter 3. Maps of the final boundary changes are in Appendix F.

In accordance with the Act the Change Commission may conduct the review in any way that it considers appropriate. To this end, the Change Commission provided data on the current boundaries and enrolment statistics as sourced from the Australian Electoral Commission (AEC) as at 23 February 2015. The Change Commission called for both suggestions and objections to the proposed boundary changes. No suggestions or objections were received.

The Isaac Regional Council wrote on 18 June 2015, requesting the Change Commission's assistance in realigning the Council's electoral boundaries. Correspondence between the Change Commission and the Isaac Regional Council was ongoing throughout the review process.

The Commissioners acknowledge the valuable assistance and expertise provided by the executive, mapping and support staff of the Electoral Commission Queensland (ECQ) including Dermot Tiernan, Zonka Petrussevska, Kurt Bonair, Moira McNeil, Yan Liu, Lesley Trost and Elise Arklay, and extend their thanks to the Queensland Treasury for the population projection figures.

**Walter van der Merwe and Gregory Rowe**

**Change Commission**

## CHAPTER 1 – INTRODUCTION

### TERMS OF REFERENCE

On 2 April 2015 the Change Commission received a reference to review the electoral arrangements of the Isaac Regional Council from the Honourable Jackie Trad MP, Minister responsible for Local Government (see Appendix B).

### LEGISLATIVE PROVISIONS

The Isaac Regional Council has 11,384 electors (as at 23 February 2015). The Council is divided into eight electoral divisions. Each division elects one Councillor while the Mayor is elected by all voters in the local government area. Elections are set by date to be held every four years as prescribed by the *Local Government Electoral Act 2011*. The next Isaac Regional Council election is scheduled for 19 March 2016.

The *Local Government Act 2009 (Qld)* (the Act) allows for changes to divisions in local government areas to ensure that each division has a reasonable proportion of electors. Pursuant to Section 22 of the Act, the Change Commission for this review was constituted by the Electoral Commissioner and the casual Commissioner.

Section 15 of the Act requires the Isaac Regional Council to review whether each of the divisions has a reasonable proportion of electors and give the Electoral Commissioner and the Minister a written notice of the results of the review no later than 1 March in the year that is one year before the year of the quadrennial elections. The date referred to in this report is known as the information date. The Council reported that Divisions 2 and 3 did not meet the reasonable proportion of elector's requirements on 27 February 2015.

Under the provisions of the Section 19 of the Act, in reviewing the division of a local government area the Change Commission is required to consider:

- 1) The Change Commission is responsible for assessing whether a proposed local government change is in the public interest;
- 2) In doing so, the Change Commission must consider:
  - a. whether the proposed local government change is consistent with the *Local Government Act*; and
  - b. the views of the Minister about the proposed local government change; and
  - c. any other matters prescribed under a regulation.

The Change Commission is required to release the outcomes of its assessment to the public and the reasoning behind the results, by publishing its findings in a newspaper circulating generally in the local government area, in the Government Gazette and on the Electoral Commission's website. The Change Commission must also give the results of its assessment to the Minister for Local Government for implementation. The method of implementation is by way of regulation by the Governor in Council.

A decision of the Change Commission is not subject to appeal.

### DETERMINING THE QUOTA

The Act specifies binding quota requirements. A quota is determined by dividing the total number of electors in the local government area by the number of councillors (other than the mayor), plus or minus:



- for a council with more than 10,000 electors – 10%; or
- for any other council – 20%.

Section 15 of the Act allows for a margin of 10 per cent for Isaac Regional Council to be adopted in relation to determining a reasonable proportion of electors. For ease of understanding the proportion of electors and the margin will be referred to in this document as “quota”.

The Change Commission, when formulating its proposals must ensure that each division complies with the quota as near as practicable to the election date. There is no latitude allowed for the Change Commission to determine electoral boundaries that do not comply with these requirements.

### *Technical Process*

Key to the redivision is elector count information sourced from the electoral roll organised around the smallest unit for the release of Census data known as a Statistical Area (SA1) utilised by the Australian Bureau of Statistics.

The AEC, which maintains the electoral roll for Queensland pursuant to a joint roll agreement, provided statistics from the roll on numbers of electors in each SA1 in the area of the Isaac Regional Council on 23 February 2015. Projections of population movement were then applied to the SA1s using data provided by Queensland Treasury. Future dates for projections were set at 31 March 2016 (just after the next quadrennial election) and 28 February 2019 (the last opportunity before the information date preceding the March 2020 election).

**Table 1 – Enrolment, Projections and Averages**

	<b>23 February 2015</b>	<b>31 March 2016</b>	<b>28 February 2019</b>
<b>Number of divisions</b>	8	8	8
<b>Enrolment</b>	11,384	11,524	12,001
<b>Average electors per division</b>	1,423	1,441	1,500
<b>Permitted Maximum Number (+10%) per division</b>	1,565	1,585	1,650
<b>Permitted Minimum Number (-10%) per division</b>	1,281	1,296	1,350

## CHAPTER 2 – THE REVIEW PROCESS

The Isaac Regional Council is divided into eight single-member divisions. By letter dated 27 February 2015, the Council advised the Minister that Divisions 2 and 3 were out of tolerance.

Based on 23 February 2015 enrolment data, the Change Commission calculated a quota (average enrolment) of 1,423, with a minimum of 1,281 (-10%) and an upper limit of 1,565 (+10%) electors permissible in each district.

On 18 June 2015, the Isaac Regional Council wrote requesting the Change Commission's assistance in realigning Isaac Regional Council's electoral boundaries for the upcoming quadrennial election. Relevant correspondence is attached at Appendix B.

Discussions between the casual Commissioner Greg Rowe, and the Director Corporate, Governance and Financial Services Aaron Johansson of the Isaac Regional Council were held on Thursday 18 June 2015. Further correspondence between the Commission and Council occurred over the following months.

In accordance with Section 19(4) of the Act, a public notice was published on 15 May 2015 inviting suggestions from interested persons. The advertisement (see Appendix C) noted that received submissions would be made available for public inspection. Suggestions closed on 5 June 2015. No suggestions were received.

A second phase of consultation began on the 25 September 2015 following an advertised call for objections to the Change Commission's Proposed Determination (see Appendix E). Objections closed on the 2 October 2015. Again, no comments were received.

In reaching its Final Determination the Change Commission took into account feedback from the Council, as well as the projected future changes in electoral numbers provided by the Queensland Treasury.

Wherever possible, the Change Commission endeavours to devise boundaries that not only meet current quota requirements but are sustainable for at least two quadrennial elections and are in the public interest. The nature and extent of population growth or decline may render this impossible in some cases and the Change Commission recognises the possibility that boundaries may need to be reviewed again in readiness for the 2020 quadrennial elections.

## CHAPTER 3 – FINAL DETERMINATION

### CURRENT ENROLMENT

The Isaac Regional Council has a total of 11,384 enrolled electors spread across eight divisions, with an average number of 1,423 electors per division. Applying the plus or minus tolerance of 10 per cent allowed by the Act, the minimum number of electors required for each division is 1,281, with a maximum of 1,565.

As can be observed in Table 2, Divisions 1, 2 and 3 are currently out of quota. The Change Commission noted that growth in Division 1 is predicted to return the division to the acceptable quota before the 2016 quadrennial election. To address the imbalance in Divisions 2 and 3, the Change Commission needed to alter the divisional boundaries to stabilise elector numbers across all eight divisions. As part of its decision making process, the Change Commission has attempted to cater for future demographic trends, while maintaining communities of interest, thereby keeping all divisions within the Isaac Regional Council in quota in the lead up to the 2020 quadrennial election.

**Table 2 – Summary of Enrolments for the Current Electoral Divisions**

<b>Division Name</b>	<b>Enrolment as at 23/02/2015</b>	<b>(%) Deviation from Quota</b>	<b>Projected Enrolment as at 31/03/2016</b>	<b>(%) Deviation from Quota</b>	<b>Projected Enrolment as at 28/02/2019</b>	<b>(%) Deviation from Quota</b>
<b>Division 1</b>	1,271	<b>-10.68</b>	1,299	-9.82	1,417	-5.54
<b>Division 2</b>	1,110	<b>-22.0</b>	1,108	<b>-23.08</b>	1,107	<b>-26.21</b>
<b>Division 3</b>	1,773	<b>+24.6</b>	1,786	<b>+23.98</b>	1,837	<b>+22.46</b>
Division 4	1,365	-4.08	1,386	-3.78	1,388	-7.47
Division 5	1,413	-0.7	1,415	-1.77	1,446	-3.61
Division 6	1,489	+4.64	1,509	+4.76	1,575	+4.99
Division 7	1,418	-0.35	1,417	-1.63	1,434	-4.41
Division 8	1,545	+8.57	1,604	<b>+11.35</b>	1,797	<b>+19.79</b>

## PROPOSED DETERMINATION

The Change Commission received no response to its call for suggestions in May 2015.

The Change Commission was satisfied that its Proposed Determination addressed the quota requirements, offering divisional boundaries that better balance electors across the Council (see Appendix D).

## OBJECTION TO THE PROPOSED DETERMINATION

The Change Commission again received no comments to its Proposed Determination report.

Consultation between the Change Commission and the Isaac Regional Council was ongoing throughout the review process. Council advised that no formal comments would be submitted. However, verbal and email feedback from Council indicated concerns with Division 7 coming into part of Moranbah, and with the size of Division 1. The Change Commission considered these matters but was unable to identify a preferable solution than the boundaries defined in the Proposed Determination.

## FINAL DETERMINATION

The Change Commission was satisfied that its proposal was well-reasoned and fulfilled the need to bring the divisions of the Isaac Regional Council into quota, while respecting communities of interest.

The Change Commission recommends that its Proposed Determination is to be the new divisional boundaries. Projected growth figures suggest these changes are likely to keep all divisions within quota and are expected to prevent the need for future boundary changes prior to the 2020 local government elections.

The Change Commission's final recommendation to the Governor in Council is as follows:

- ***That for the purposes of the 2016 local government elections, the Isaac Regional Council be redivided into eight divisions as shown on the maps contained in Appendix F of this report.***

The Change Commission notes that implementation of this recommendation will give rise to the following divisional elector numbers:

**Table 3 – Summary of Enrolments for the Final Electoral Divisions**

<b>Division Name</b>	<b>Enrolment as at 23/02/2015</b>	<b>(%) Deviation from Quota</b>	<b>Projected Enrolment as at 31/03/2016</b>	<b>(%) Deviation from Quota</b>	<b>Projected Enrolment as at 28/02/2019</b>	<b>(%) Deviation from Quota</b>
Division 1	1,422	-0.07	1,450	+0.66	1,570	+4.66
Division 2	1,379	-3.09	1,377	-4.41	1,376	-8.27
Division 3	1,348	-5.27	1,364	-5.31	1,415	-5.67
Division 4	1,442	+1.34	1,461	+1.42	1,466	-2.27
Division 5	1,485	+4.36	1,481	+2.81	1,488	-0.81
Division 6	1,489	+4.64	1,509	+4.76	1,575	+4.99
Division 7	1,449	+1.83	1,453	+0.87	1,491	-0.61
Division 8	1,370	-3.72	1,429	-0.8	1,620	+7.99



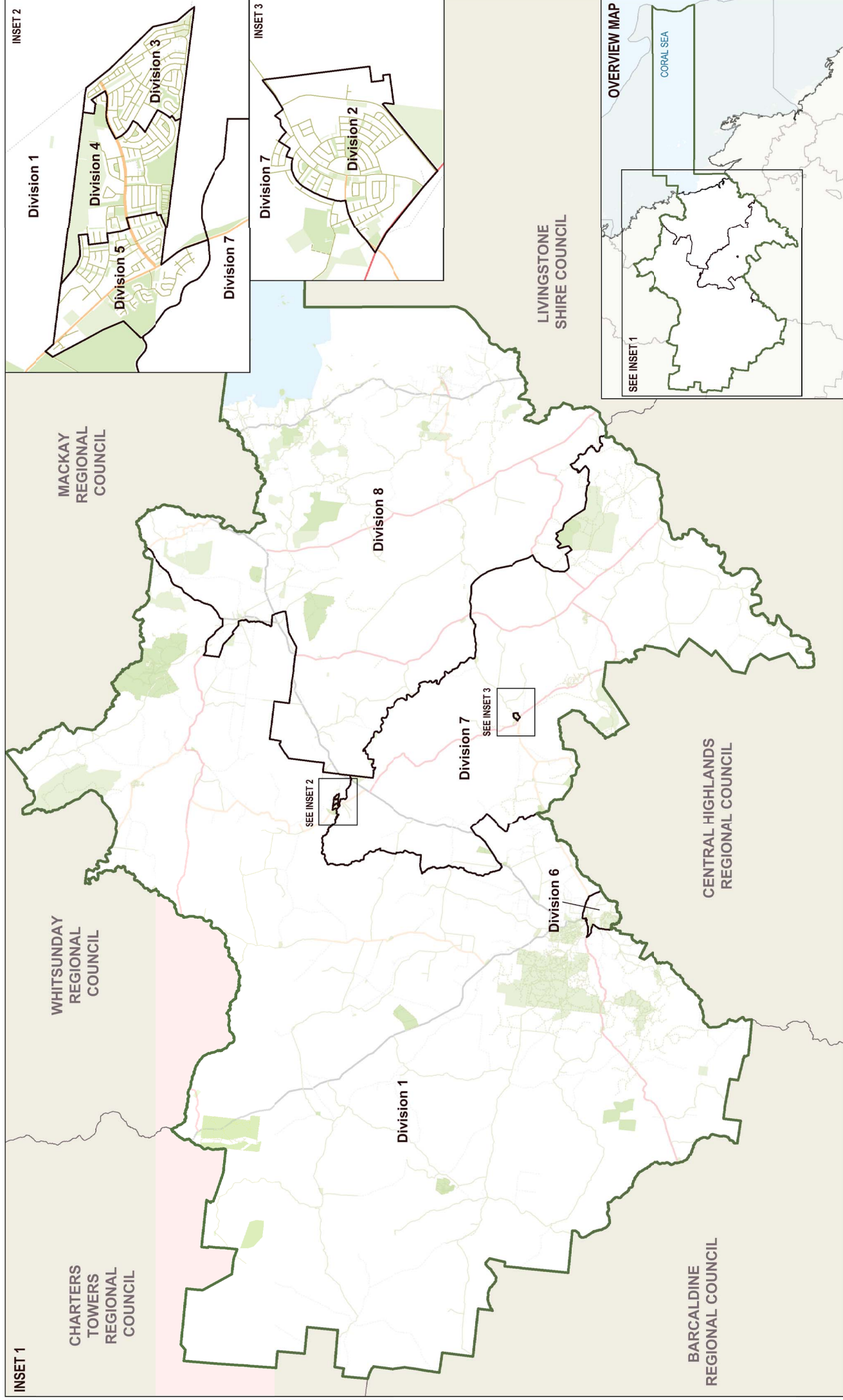
# **APPENDIX A**

## **Previous Electoral Divisions**





# EXISTING ELECTORAL DIVISIONS



Council Boundary  
 Existing Division Boundary  
 Adjacent Council  
 Park / Reserve

Watercourse / Waterbody





# **APPENDIX B**

**Minister's Referral  
Council's Correspondence**





# Hon Jackie Trad MP

Deputy Premier

Minister for Transport, Minister for Infrastructure,  
Local Government and Planning and Minister for Trade

---

Our ref: MBN15/49

**- 2 APR 2015**

Mr Walter van der Merwe  
Electoral Commissioner  
Electoral Commission Queensland  
GPO Box 1393  
BRISBANE QLD 4001

Dear Mr van der Merwe

I am writing to you in relation to local government electoral reviews which have been undertaken in preparation for the 2016 local government elections.

I have recently received proposals from 14 local governments seeking a review of their existing electoral arrangements.

The proposals include submissions in relation to the internal divisional boundary distributions where it has been determined that the divisional boundaries are out-of-quota. In addition, four of those local governments have submitted additional proposals for voluntary changes to their existing arrangements.

I note that, under section 19 of *the Local Government Act 2009* (the Act), the Commission must consider whether the local government change is consistent with the Act and must consider my views on any proposed changes.

Having examined each of their proposals, I consider it appropriate to refer each matter to you for independent assessment and determination by the Local Government Change Commission.

For your reference, I have enclosed a summary of each divided local government's quota review, a copy of each proposal referred to you for review and additional supporting information to assist with your review.

Level 12 Executive Building  
100 George Street Brisbane  
PO Box 15009 City East  
Queensland 4002 Australia  
**Telephone +61 7 3719 7100**  
**Email [deputy.premier@ministerial.qld.gov.au](mailto:deputy.premier@ministerial.qld.gov.au)**

If you require any further information, please contact Mr Max Barrie, Director, Program Implementation and Review on (07) 3452 6704 or [max.barrie@dlgcr.qld.gov.au](mailto:max.barrie@dlgcr.qld.gov.au), who will be pleased to assist.

Yours sincerely



**JACKIE TRAD MP**  
**DEPUTY PREMIER**

**Minister for Transport, Minister for Infrastructure,  
Local Government and Planning and Minister for Trade**

Enc (15)

**DIVIDED LOCAL GOVERNMENTS – QUOTAS AND PROPOSED VOLUNTARY CHANGES**

<b><u>Local Government</u></b>	<b><u>Results of Review</u></b>	<b><u>No. of Divisions Out of Quota</u></b>	<b><u>Referral to Local Government Change Commission</u></b>
Banana Shire Council	Out-of-quota	2	Refer quota review
Bundaberg Regional Council	Out-of-quota	2	Refer: <ul style="list-style-type: none"> <li>• quota review</li> <li>• proposal to abolish divisions</li> <li>• proposal to incorporate unallocated area into local government area</li> </ul>
Cairns Regional Council	Out-of-quota	1	Refer quota review
Cassowary Coast Regional Council	In quota	0	No referral required
Fraser Coast Regional Council	Out-of-quota	2	Refer quota review
Gold Coast City Council	In quota	0	No referral required
Gympie Regional Council	In quota	0	No referral required
Ipswich City Council	Out-of-quota	5	Refer quota review
Isaac Regional Council	Out-of-quota	2	Refer quota review
Logan City Council	Out-of-quota	1	Refer quota review
Moreton Bay Regional Council	Out-of-quota	2	Refer quota review
North Burnett Regional Council	In quota	0	No referral required
Redland City Council	Out-of-quota	1 (out) and 1 (predicted)	Refer both quota reviews
Rockhampton Regional Council	Out-of-quota	2	Refer: <ul style="list-style-type: none"> <li>• quota review</li> <li>• proposal to renumber divisions</li> </ul>
Scenic Rim Regional Council	Out-of-quota	1 (out) and 1 (predicted)	Refer both quota reviews
South Burnett Regional Council	In quota	0	No referral required
Sunshine Coast Regional Council	Out-of-quota	2	Refer quota review
Tablelands Regional Council	Out-of-quota	3	Internal boundary review plus additional voluntary change proposal to increase councillor numbers already referred to Change Commission on 16 December 2014.
Townsville City Council	Out-of-quota	2	Refer quota review
Whitsunday Regional Council	Out-of-quota	1	Refer quota review





Our Ref.: ECQ DivReview  
Your Ref.:

**SENT BY EMAIL TO** [greg.rowe@ecq.qld.gov.au](mailto:greg.rowe@ecq.qld.gov.au)

18 June 2015

Mr Greg Rowe  
A/Director Elector Management & Change Commission  
Level 6  
Forestry House  
160 Mary Street  
BRISBANE QLD 4000

Dear Mr Rowe

**RE QUEENSLAND LOCAL GOVERNMENT ELECTIONS - ISAAC REGIONAL COUNCIL**

I wish to confirm discussions between Greg Rowe, ECQ and our officer Aaron Johansson, Director Corporate, Governance and Financial Services held on Thursday 18 June 2015.

We request ECQ's assistance in realigning Isaac Regional Council's electoral boundaries for the 2016 Local Government election.

Council looks forward to receiving your further advices in the planning for the 2016 Local Government Elections.

If you have any further questions, please contact Aaron Johansson, Director Corporate, Governance and Financial Services on 07 4846 3543.

Yours faithfully



GRAHAM WEBB  
Acting Chief Executive Officer

27 February 2015

*W. C. M.*  
The Commissioner  
Electoral Commission Queensland  
GPO Box 1393  
BRISBANE QLD 4001  
*L → Greg*

Dear Commissioner

**RE LOCAL GOVERNMENT DIVISION QUOTAS**

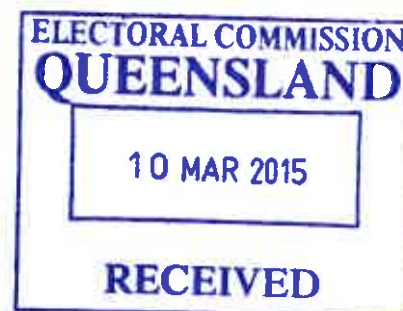
I refer to the above matter and enclose a copy of Council's letter of even date to the Minister for Local Government, Community Recovery and Resilience for your information.

Yours faithfully



BRUCE McCANN  
Director Legal and Governance

Encl



27 February 2015

The Honourable Jackie Trad  
Deputy Premier and Minister for Local Government,  
Community Recovery and Resilience  
Level 17  
41 George Street  
BRISBANE QLD 4000

**COPY**

Dear Minister Trad

**RE LOCAL GOVERNMENT DIVISION QUOTAS**

At the Ordinary Meeting of Council on Tuesday 24 February 2015, in preparation for the 2016 quadrennial local government elections, Council reviewed and considered whether each of its divisions had a reasonable proportion of electors pursuant to section 16 of the *Local Government Act 2009*.

After due consideration and review, Council resolved, inter alia:

**That Council:**

- **Request the Acting Chief Executive Officer to advise the Minister for Local Government, Recovery and Resilience and the Electoral Commission that Council has reviewed each of the divisions and considers that divisions 2 and 3 are out of quota and require change to achieve a reasonable proportion of electors in those divisions.**

Council hereby advises accordingly in reliance on information provided to Council by the Department on 5 February 2015. A copy of the Local Government Internal Boundary Review as at 30 January 2015 is enclosed.

Yours faithfully



**BRUCE McCANN**  
**Director Legal and Governance**

Encl

 The Commissioner, Electoral Commission Queensland

Amended Attachment to Report 10.3.9 - Preparation for the 2016 Quadrennial Local Government Elections

**Local Government Internal Boundary Review****30-Jan-15**

Council	Div No.	Voters	Reps	Ave Enr	Low	High	In/Out	QuotaVarP percent	ToleranceVarPe rcent
Isaac	1	1,284	1	1,426	1,284	1,569	ok	-9.97	ok
Isaac	2	1,112	1	1,426	1,284	1,569	out	-22.03	-12.03
Isaac	3	1,779	1	1,426	1,284	1,569	out	24.74	14.74
Isaac	4	1,374	1	1,426	1,284	1,569	ok	-3.66	ok
Isaac	5	1,434	1	1,426	1,284	1,569	ok	0.55	ok
Isaac	6	1,484	1	1,426	1,284	1,569	ok	4.06	ok
Isaac	7	1,411	1	1,426	1,284	1,569	ok	-1.06	ok
Isaac	8	1,531	1	1,426	1,284	1,569	ok	7.35	ok
(10%)	Total	11,409	8	1,426	1,284	1,569	New Req	OUT	

# **APPENDIX C**

## **Invitation for Written Submissions**



# QUEENSLAND CHANGE COMMISSION CAIRNS REGIONAL, LOGAN CITY, ISAAC REGIONAL, REDLAND CITY & WHITSUNDAY REGIONAL COUNCILS

## INVITATION FOR SUBMISSIONS

The local government areas of **Cairns Regional, Logan City, Isaac Regional, Redland City and Whitsunday Regional Councils** have advised that their electoral divisions no longer meet the quota requirements set down in the Local Government Act. The Minister responsible for Local Government has in turn referred the matter to the Change Commission for independent assessment.

The Commission invites written suggestions from interested persons and bodies relating to these council's electoral division to be lodged on or before **5.00 pm Friday 5 June 2015**.

Section 15 of the Act requires the Commission to ensure that the number of enrolled electors in all divisions does not differ from the average by  $\pm 10\%$ . The Commission has determined the average enrolment, along with the minimum and maximum number of electors based on the specified level of tolerance of 10% in the table below for each council currently reviewing.

Council	Electors	Average	Minimum	Maximum
Cairns Regional	94,887	10,543	9,489	11,597
Logan City	173,385	14,449	13,004	15,894
Isaac Regional	11,384	1,423	1,281	1,565
Redland City	99,635	9,964	8,967	10,960
Whitsunday Regional	20,377	3,396	3,057	3,736

(These figures are as at 23 February 2015 and may need to be readjusted slightly depending upon population growth between now and the Local Government elections scheduled for March 2016.)

Further information about the review process and advice on formulating suggestions may be found on the Electoral Commission of Queensland website under Local Government Reviews.

Suggestions should be marked with the name of the Council e.g. LOGAN CITY and be lodged as follows:

- by posting to  
Change Commissioner, Local Government Change Commission, GPO Box 1393, BRISBANE, QLD 4001
- by personal delivery, between the hours of 9.00 am and 5.00 pm to:  
Electoral Commission of Queensland, Level 6, Forestry House, 160 Mary Street, Brisbane
- by email to  
cairnsregionalcouncilreview@ecq.qld.gov.au or  
logancitycouncilreview@ecq.qld.gov.au or  
isaacregionalcouncilreview@ecq.qld.gov.au or  
redlandcitycouncilreview@ecq.qld.gov.au or  
whitsundayregionalcouncilreview@ecq.qld.gov.au.
- online form

It would assist the Commission if anyone intending to submit maps with written suggestions could do so by using maps of the present divisions which are available on the Commission's website, or by contacting the Commission on 1300 881 665 for assistance.

**If you wish to lodge a submission, please note that all submissions will be published in their entirety (including name and address details) on the Commission's website.**

Walter van der Merwe  
**Change Commissioner**  
**Electoral Commission of Queensland**

Blaze066835





# **APPENDIX D**

**Change Commission's Proposed Determination**



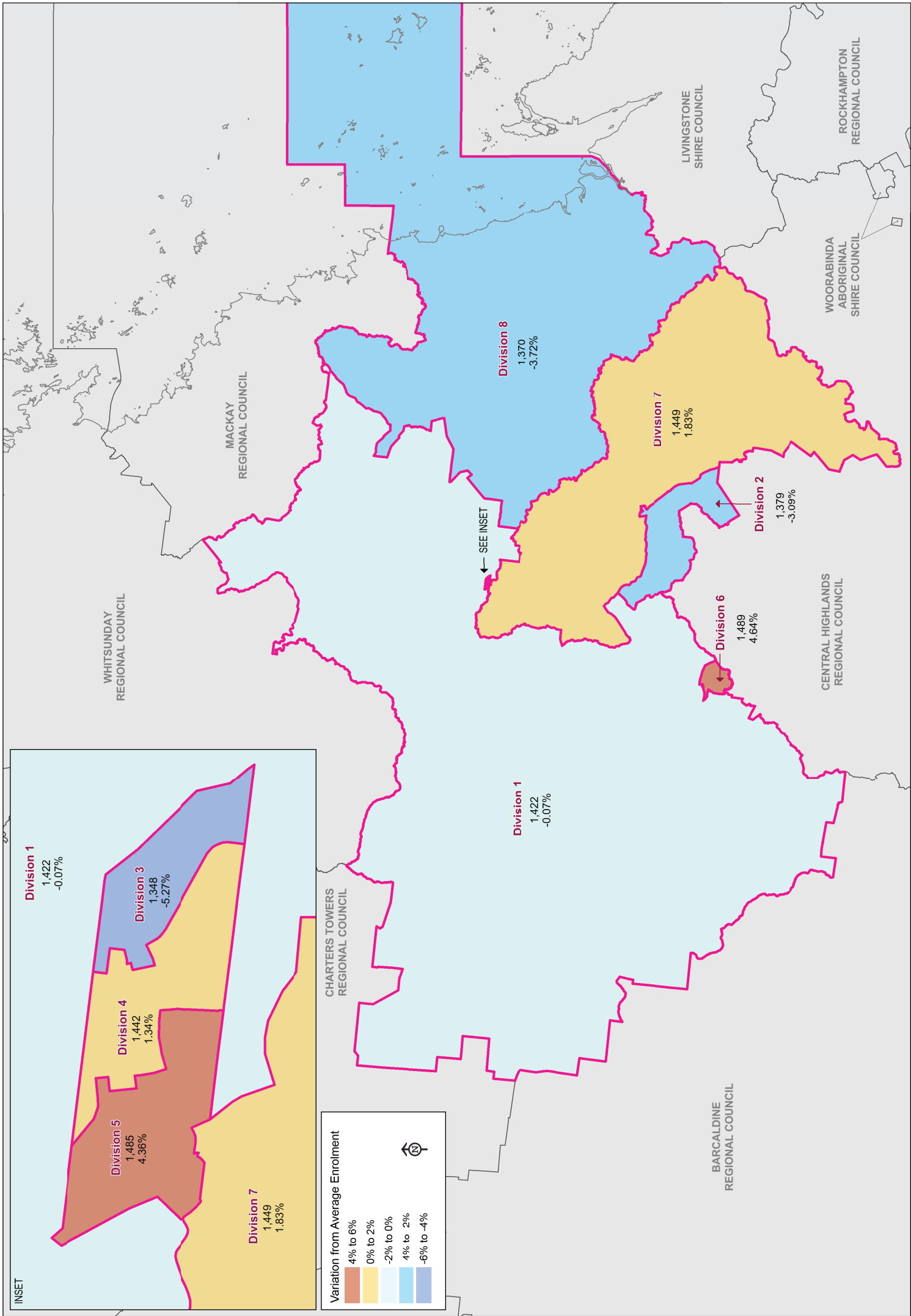
Summary Report of Proposed Division's Enrolment Figures

ISAAC REGIONAL COUNCIL

Proposed Division	Actual			Projected - 2016			Projected - 2019		
	Enrolment (23 February 2015)	Quota Variation (%)	Quota Status	Enrolment (31 March 2016)	Quota Variation (%)	Quota Status	Enrolment (28 February 2019)	Quota Variation (%)	Quota Status
Division 1	1,422	-0.07	In	1,450	0.66	In	1,570	4.66	In
Division 2	1,379	-3.09	In	1,377	-4.41	In	1,376	-8.27	In
Division 3	1,348	-5.27	In	1,364	-5.31	In	1,415	-5.67	In
Division 4	1,442	1.34	In	1,461	1.42	In	1,466	-2.27	In
Division 5	1,485	4.36	In	1,481	2.81	In	1,488	-0.81	In
Division 6	1,489	4.64	In	1,509	4.76	In	1,575	4.99	In
Division 7	1,449	1.83	In	1,453	0.87	In	1,491	-0.61	In
Division 8	1,370	-3.72	In	1,429	-0.8	In	1,620	7.99	In
Actual Total	11,384		Projected Total	11,524		Projected Total	12,001		
Actual Average	1,423		Projected Average	1,441		Projected Average	1,500		
Actual Lower Limit	1,281		Projected Lower Limit	1,296		Projected Lower Limit	1,350		
Actual Upper Limit	1,565		Projected Upper Limit	1,585		Projected Upper Limit	1,650		



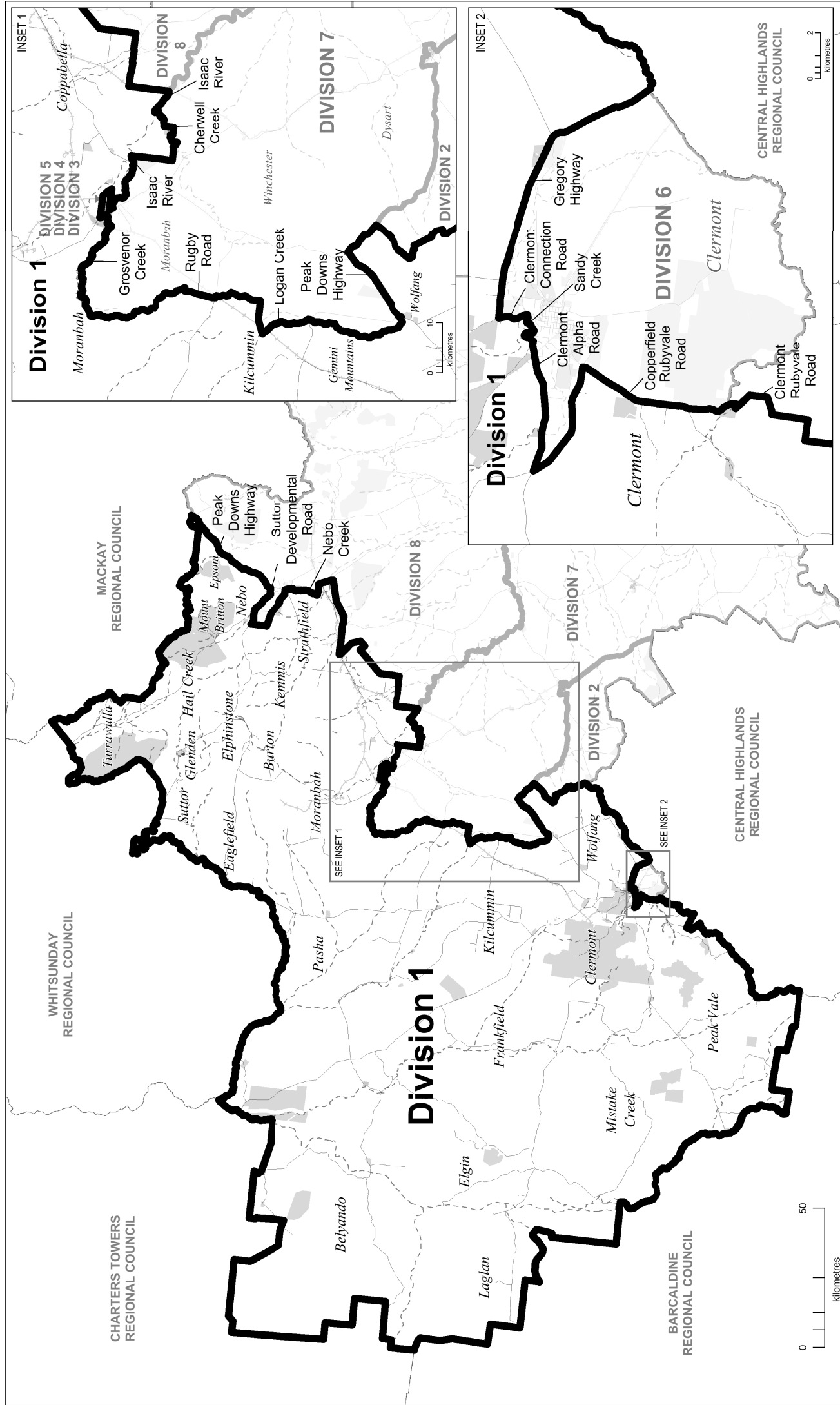
ISAAC REGIONAL COUNCIL PROPOSED DIVISION BOUNDARIES



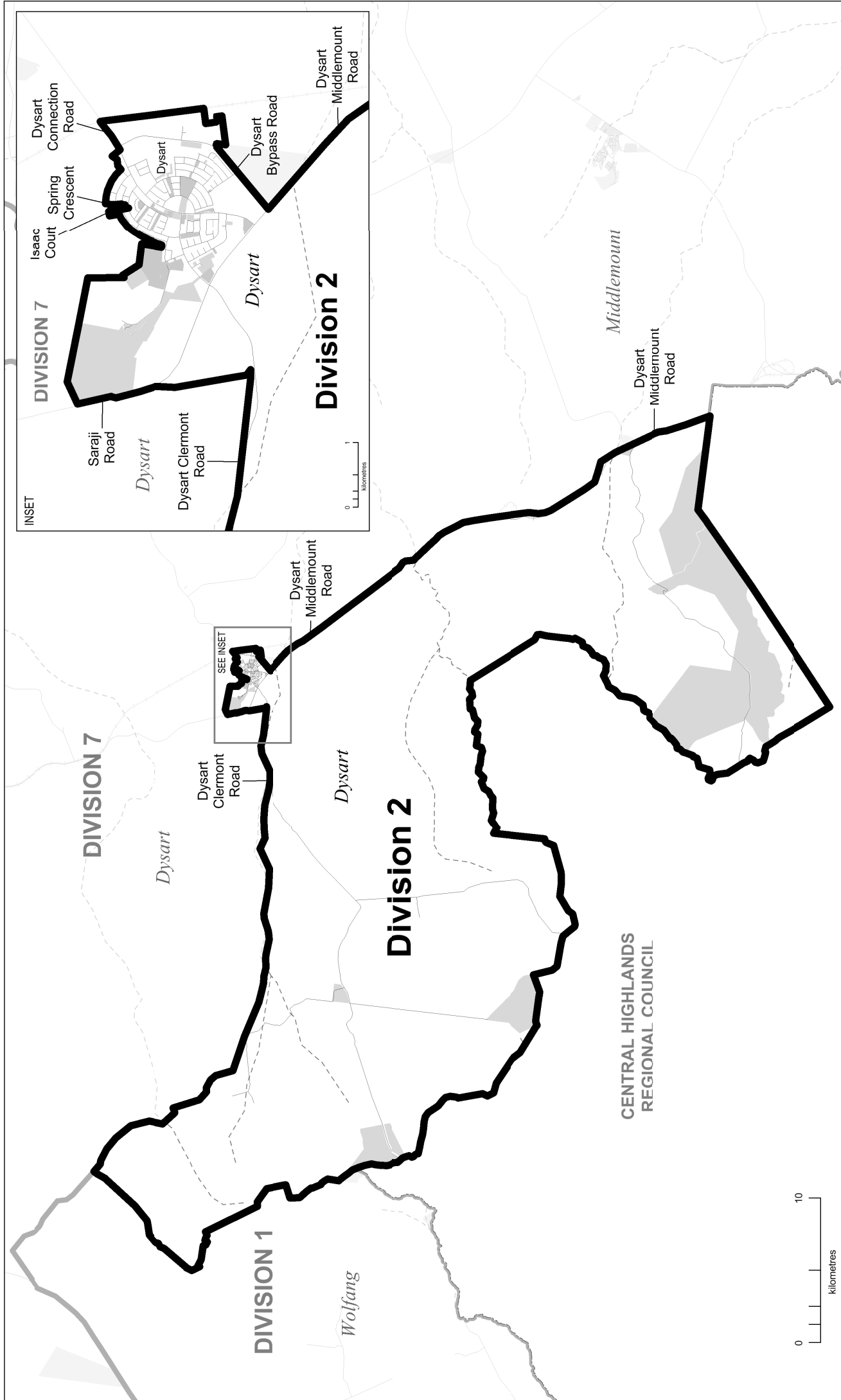


# 2015 PROPOSED DIVISIONAL BOUNDARIES

## DIVISION 1

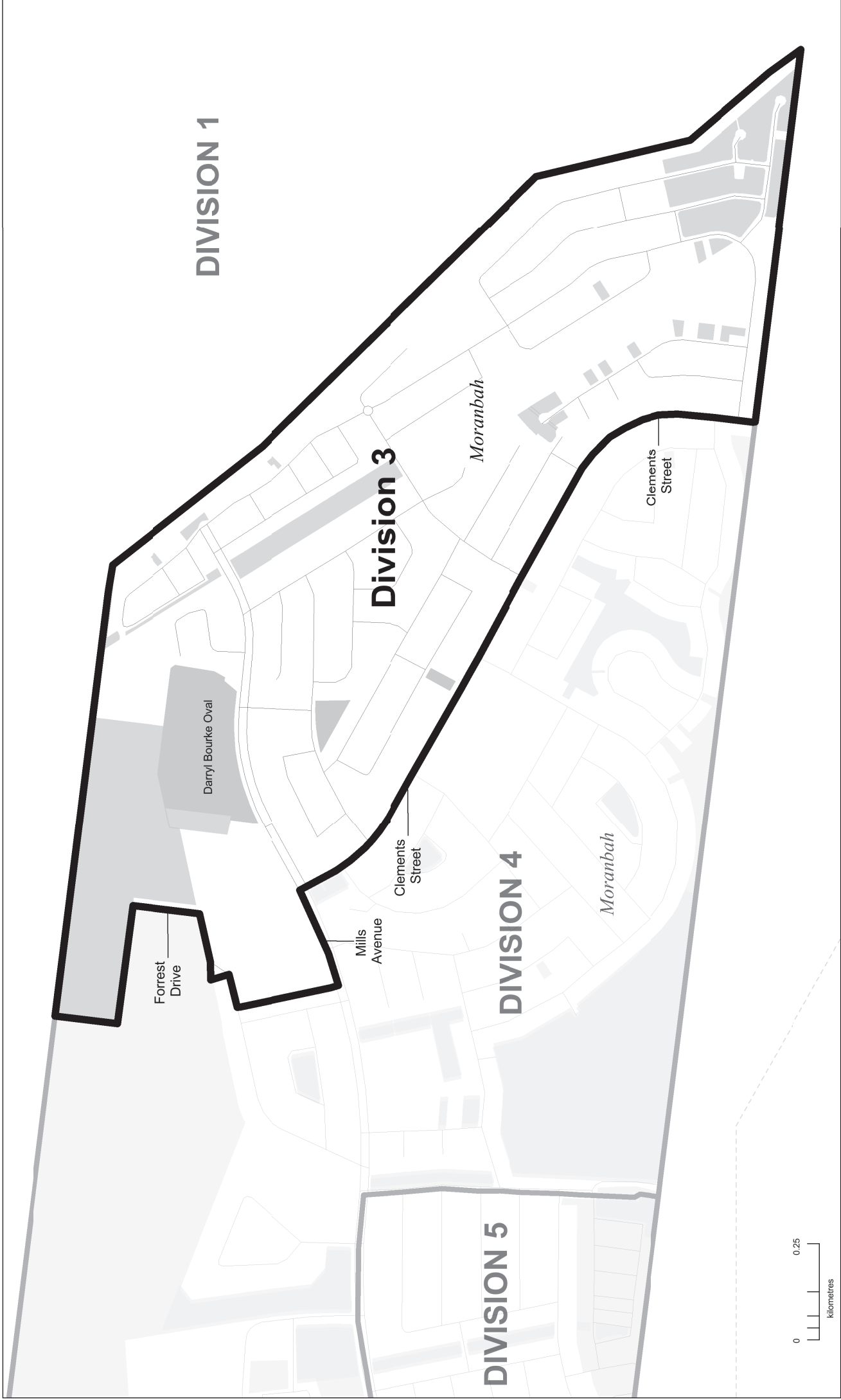


# DIVISION 2

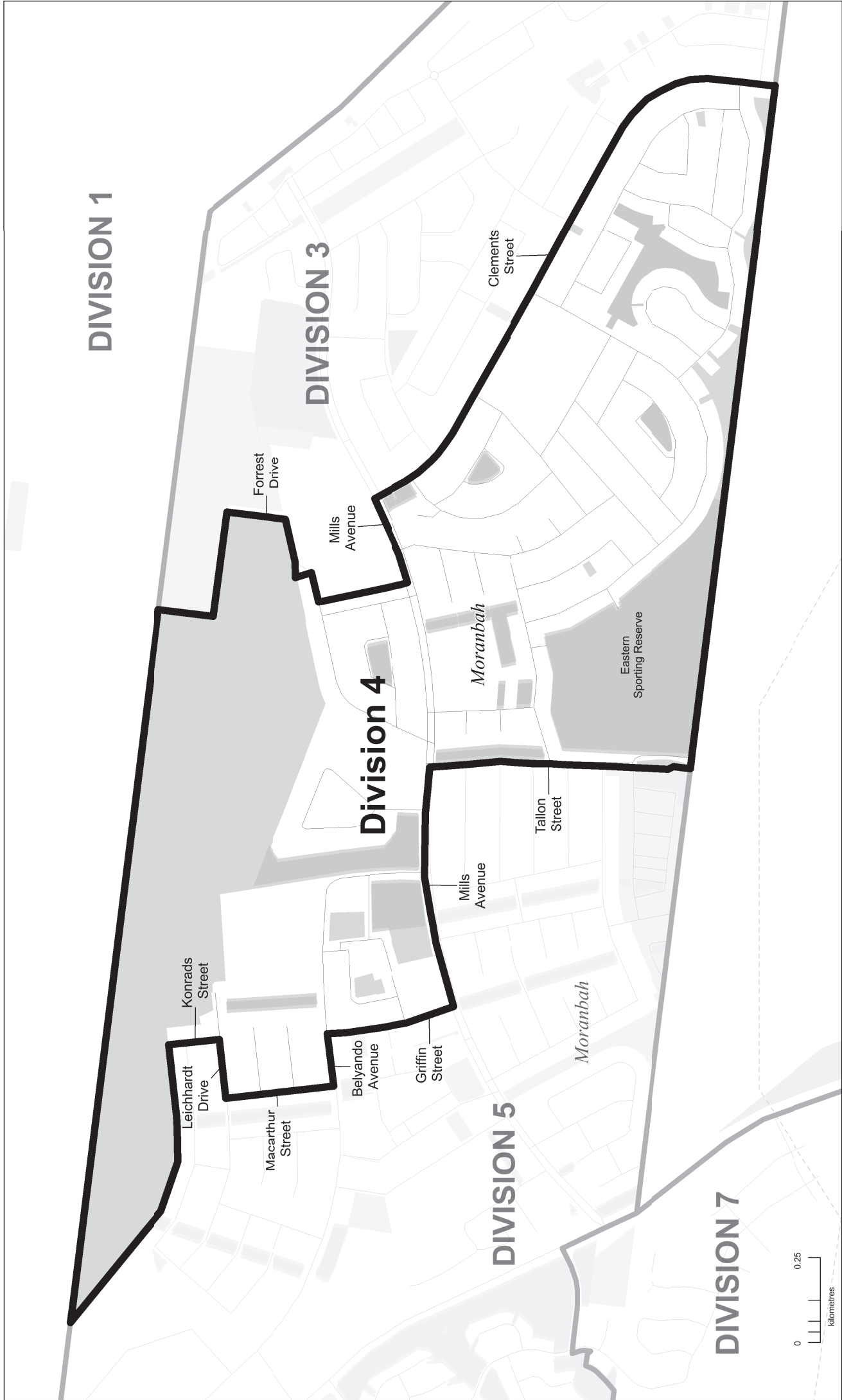




**DIVISION 3**

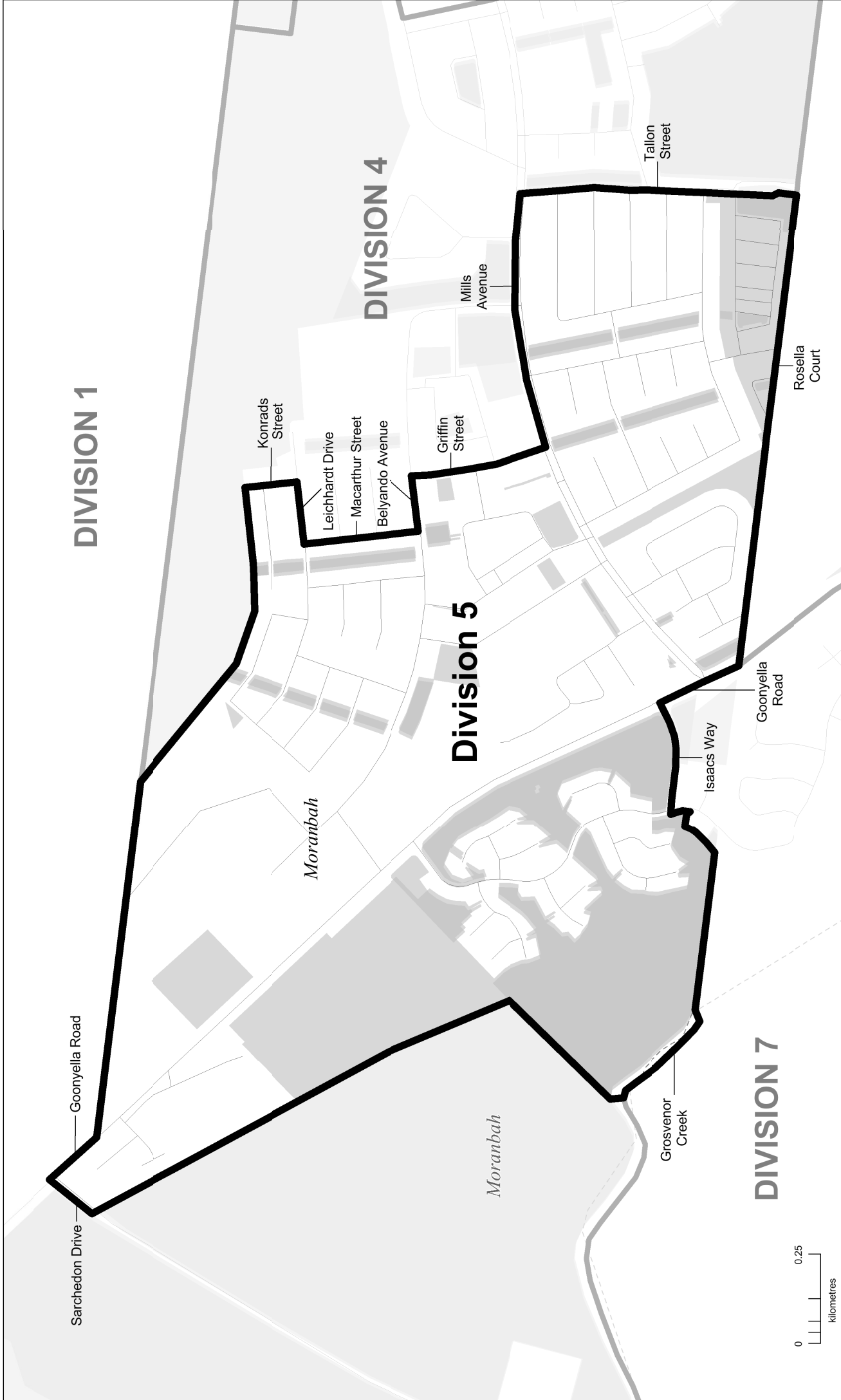


# DIVISION 4

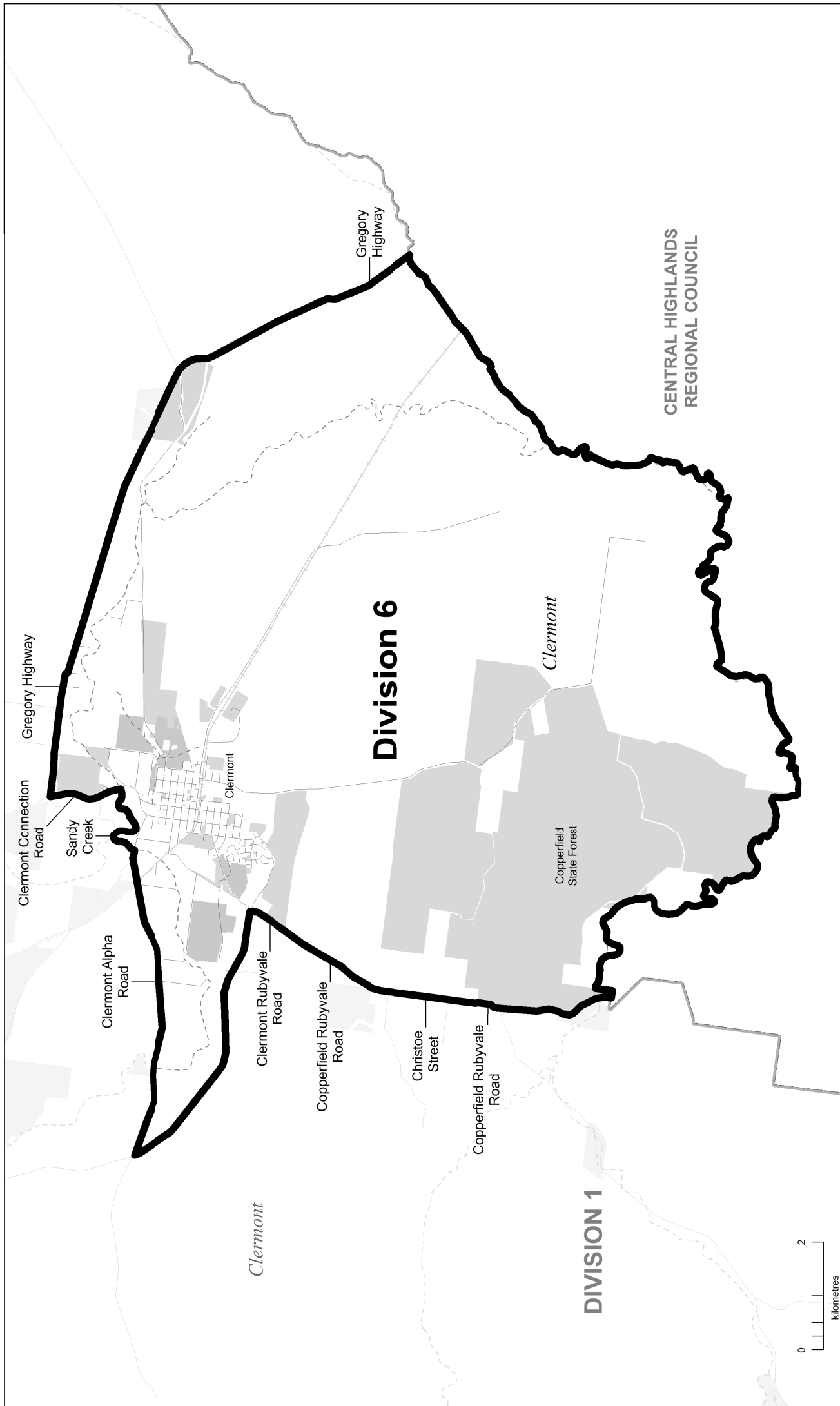


- Proposed Division Boundary
- Proposed Adjacent Division Boundary
- Road
- Railway
- Watercourse
- Waterbody
- Park / Reserve

# DIVISION 5

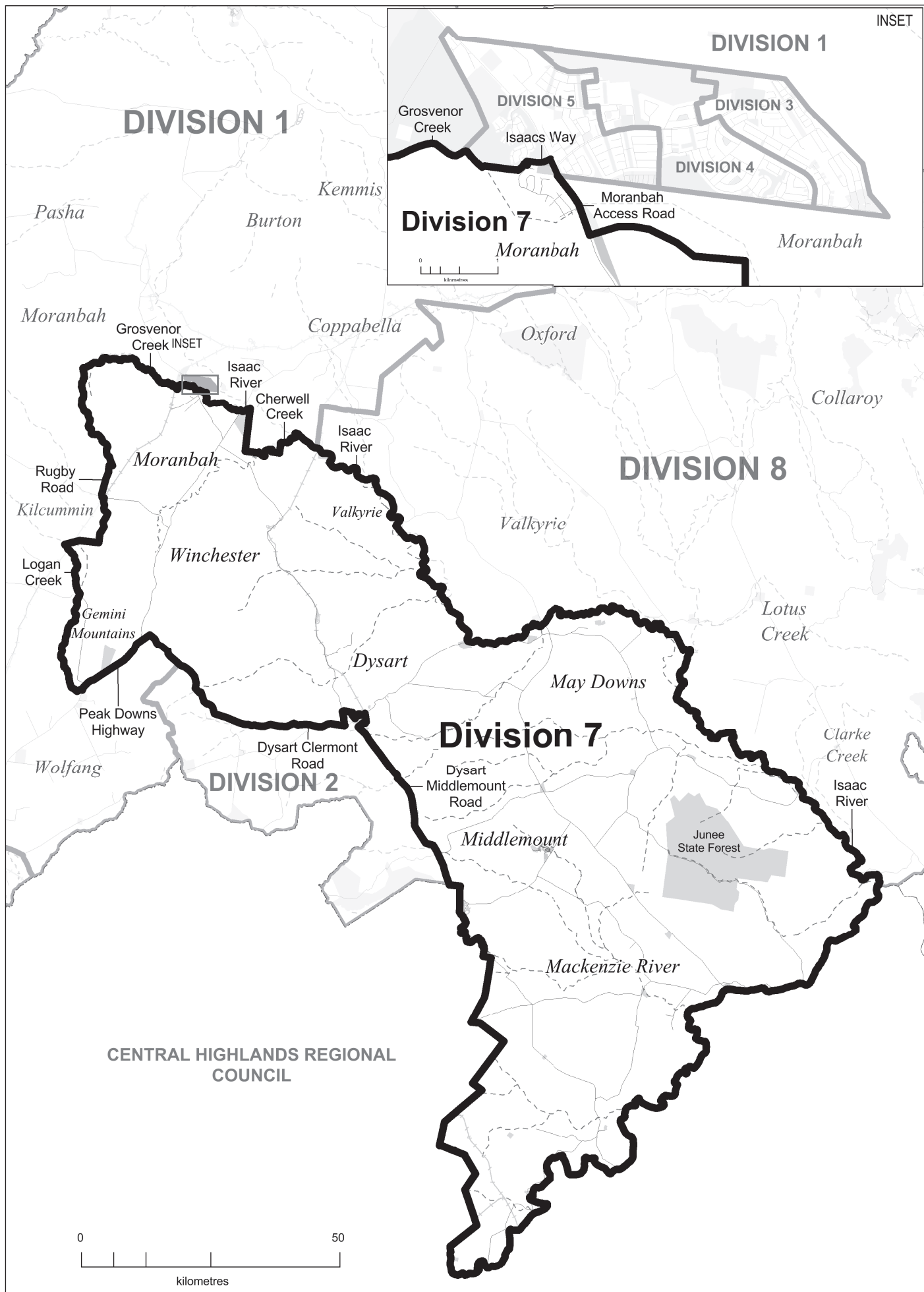


# DIVISION 6

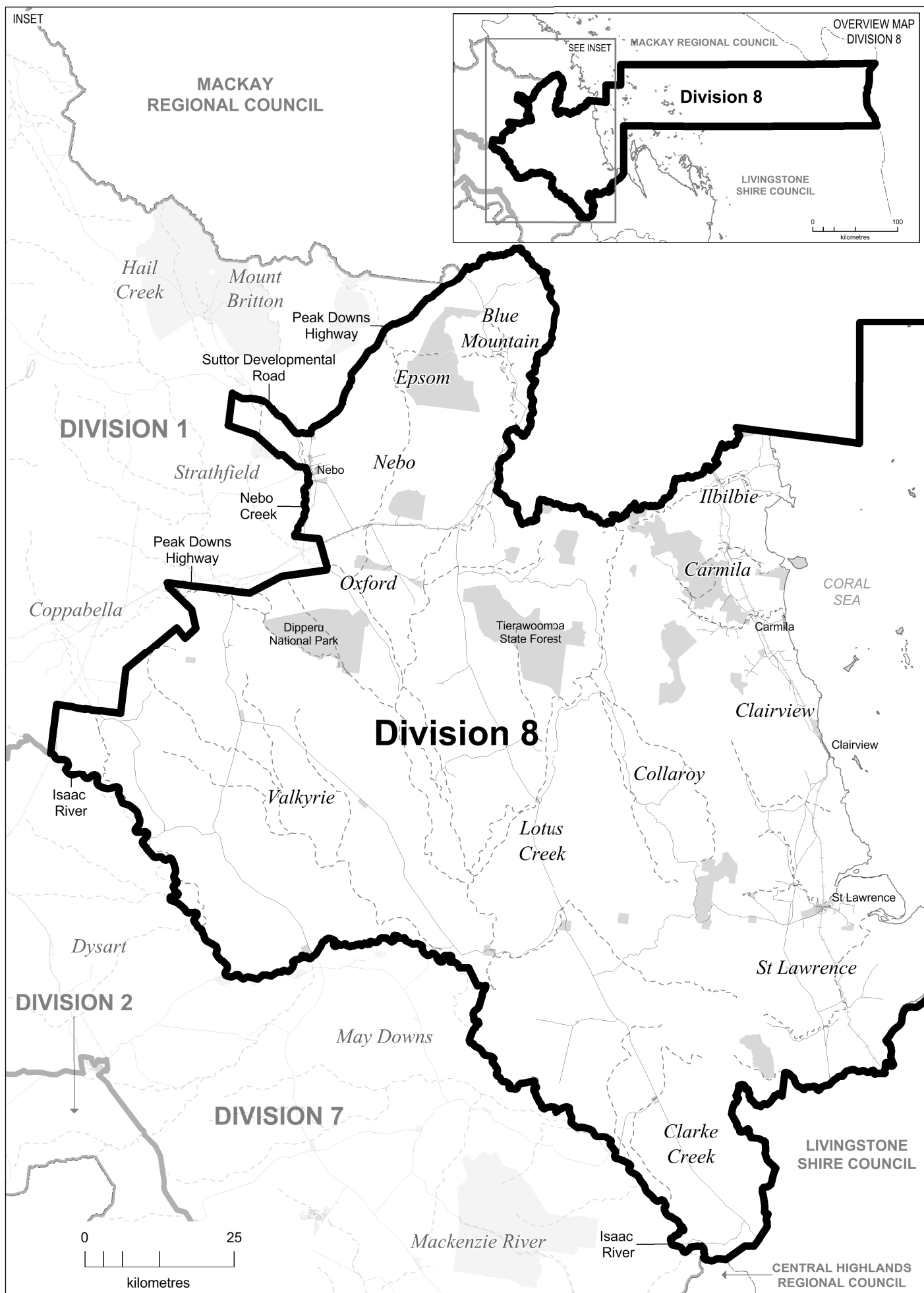


# 2015 PROPOSED DIVISIONAL BOUNDARIES

## DIVISION 7



# DIVISION 8



# **APPENDIX E**

## **Invitation for Objections to the Proposal**





# LOCAL GOVERNMENT CHANGE COMMISSION ISAAC REGIONAL COUNCIL

## INVITATION FOR OBJECTIONS TO THE PROPOSAL

The Isaac Regional Council has advised that its electoral divisions no longer meet the quota requirements set down in the *Local Government Act 2009* (Act). The Minister responsible for Local Government has in turn referred the matter to the Local Government Change Commission for an independent assessment.

The Commission now invites written objections from interested persons and bodies' relating to the council's proposed eight electoral divisions, to be lodged on or **before 5.00pm Friday 2 October 2015**.

For this phase of the review, the enrolment for Isaac Regional Council as at 23 February 2015 is being used. The total enrolment was 11,384. The Commission has determined that 1,423 is the reasonable proportion of electors for an electoral division. Section 17 of the Act requires the Commission to ensure that the number of enrolled electors in all divisions does not differ from this reasonable proportion by  $\pm 10\%$ . In order to meet the enrolment criteria set out in the Act, the number of electors in each division must be within the minimum of 1,281 and the maximum of 1,565. Furthermore, the Act requires that the reasonable proportion of electors must be worked out as near as practicable to the time when the change is to happen to ensure demographic representation for each division of Isaac Regional Council. Projected enrolment for March 2016 and February 2019 has been used to assist with this requirement.

Further information about the review process, reference material, maps, guidelines and advice on preparing objections to the proposal may be found on the Electoral Commission Queensland (ECQ) website ([www.ecq.qld.gov.au](http://www.ecq.qld.gov.au)); under ELECTORAL DISTRICTS then LOCAL GOVERNMENT AREAS then LOCAL GOVERNMENT REVIEWS then click Isaac Regional.

Anyone interested in lodging an objection should note that all objections will be published on the Commission's website in their entirety and in a publication.

Objections should be marked ISAAC REGIONAL and may be:

- posted to:  
Local Government Change Commission, GPO Box 1393, BRISBANE, QLD 4001 or
- personally delivered to:  
Electoral Commission Queensland, Level 6, Forestry House,  
160 Mary Street, Brisbane, between the hours of 9.00 am and 5.00 pm or
- lodged by email to: [isaacregionalcouncilreview@ecq.qld.gov.au](mailto:isaacregionalcouncilreview@ecq.qld.gov.au) or
- lodged via online form:  
Which can be found on the ECQ website ([www.ecq.qld.gov.au](http://www.ecq.qld.gov.au)) under ELECTORAL DISTRICTS then LOCAL GOVERNMENT AREAS then LOCAL GOVERNMENT REVIEWS then click on Isaac Regional and scroll to the bottom of the Proposed Determination Section.

It would assist the Commission if anyone intending to submit objections accompanies them with the electronic mapping data if this has been prepared, preferably in MapInfo and/or KML format in projection GDA94 – Longitude/Latitude (Australia GDA94).

**For any assistance related to the review matter please refer to the Commission's website, or contact the Commission on 1300 881 665 for assistance.**

Walter van der Merwe

**Change Commissioner  
Electoral Commission of Queensland**

Blaze077161

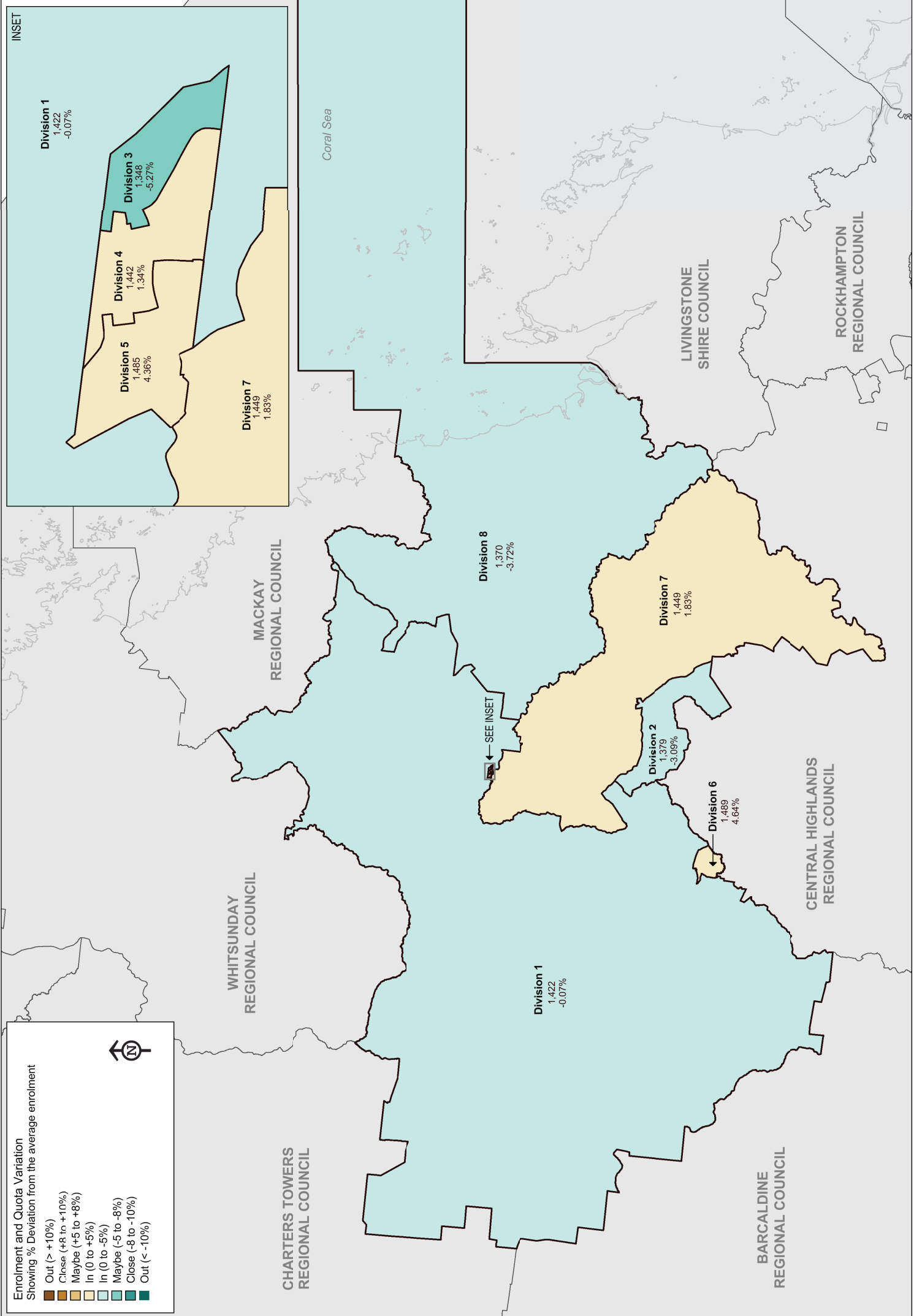


# **APPENDIX F**

**Maps of Council's Electoral  
Divisions for 2016 Elections**



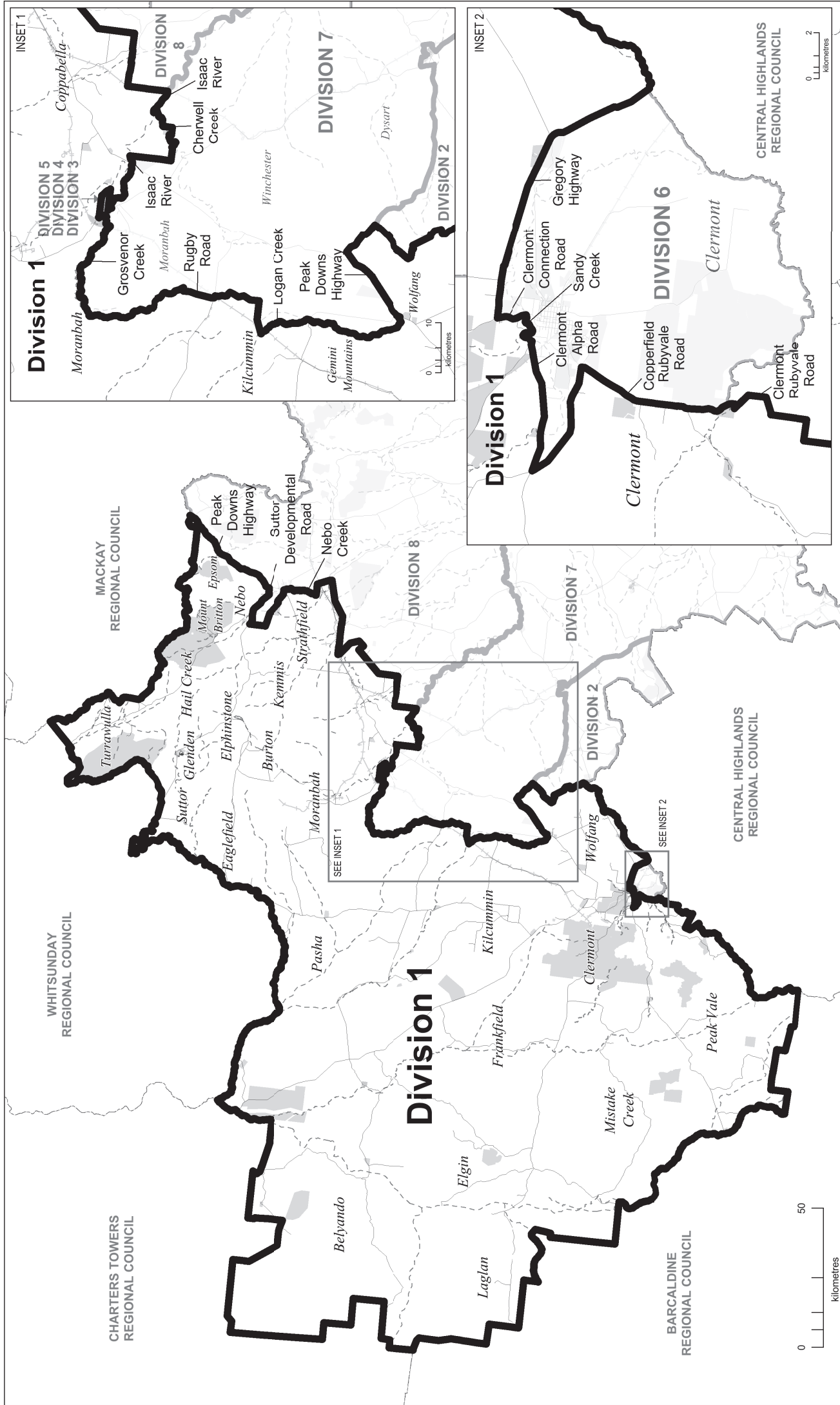
ISAAC REGIONAL COUNCIL FINAL DIVISION BOUNDARIES



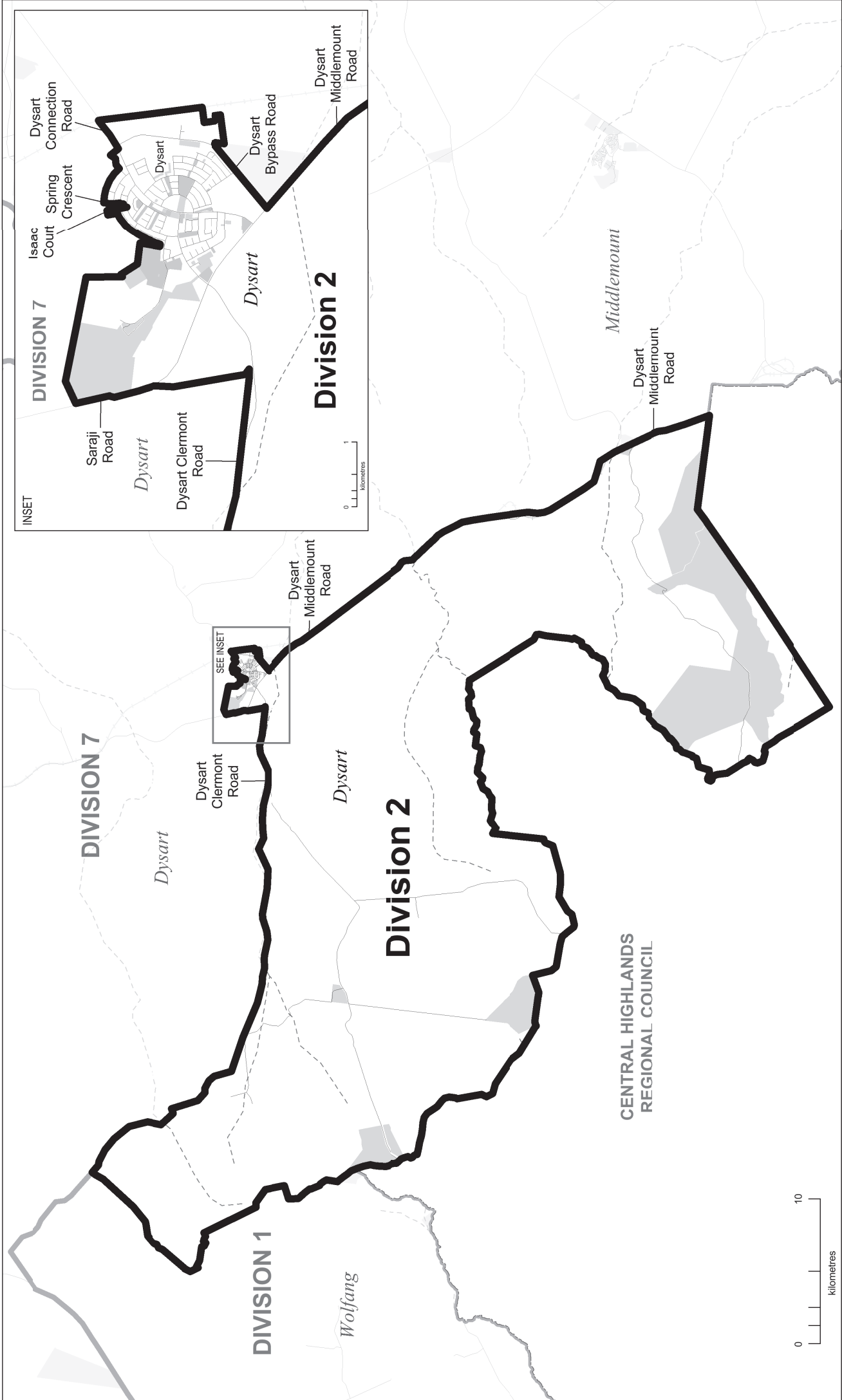


# 2015 DIVISIONAL BOUNDARIES

## DIVISION 1

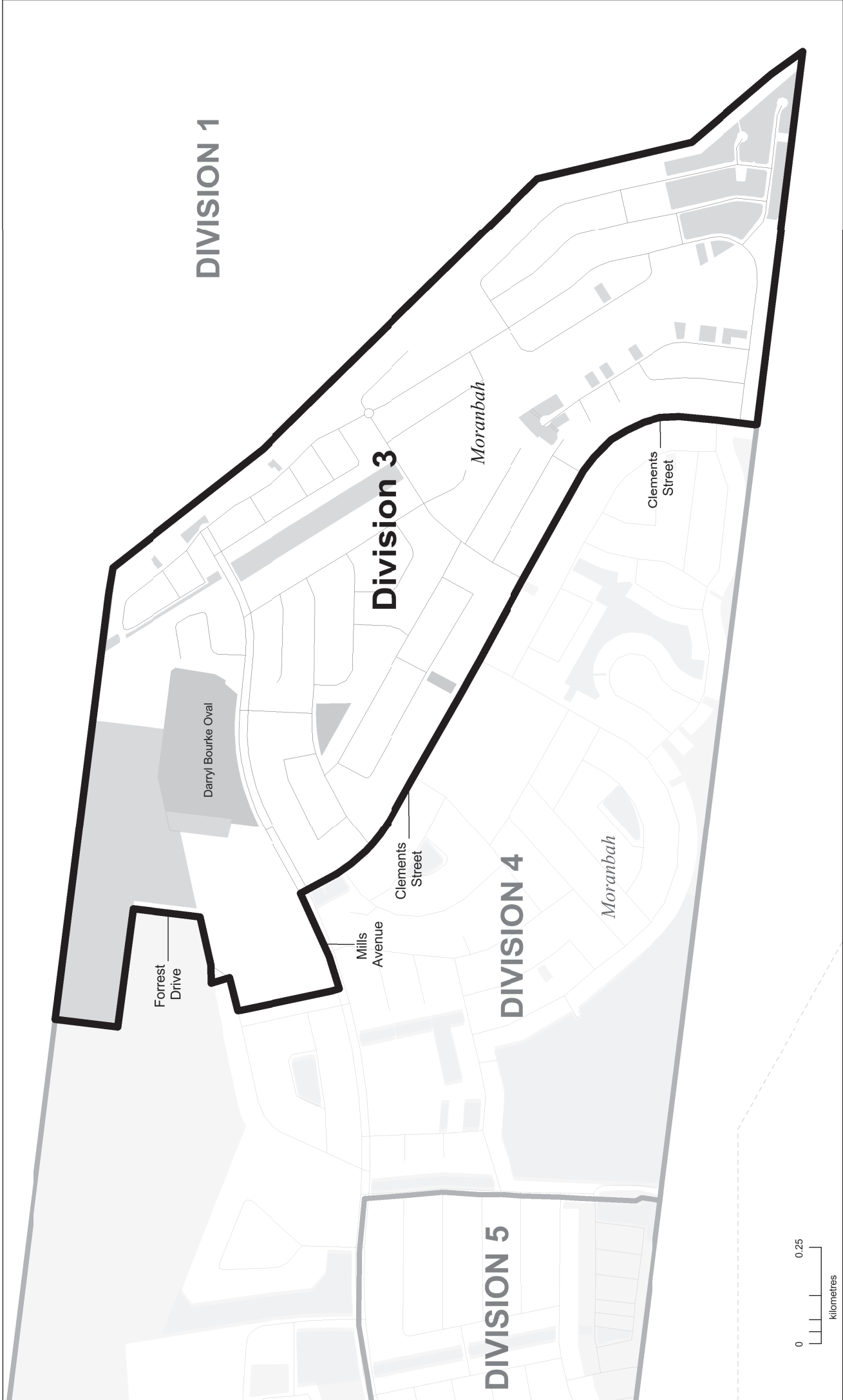


DIVISION 2

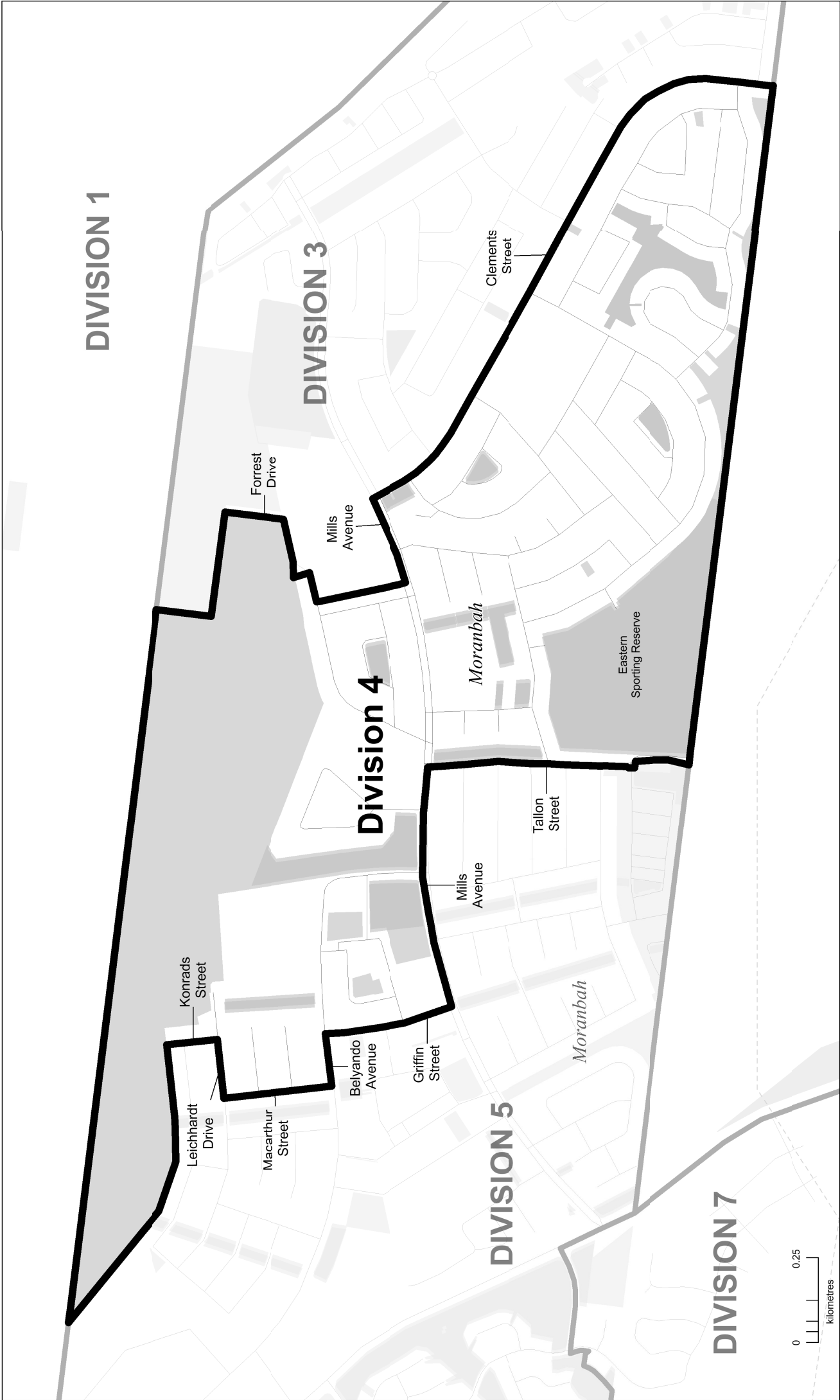




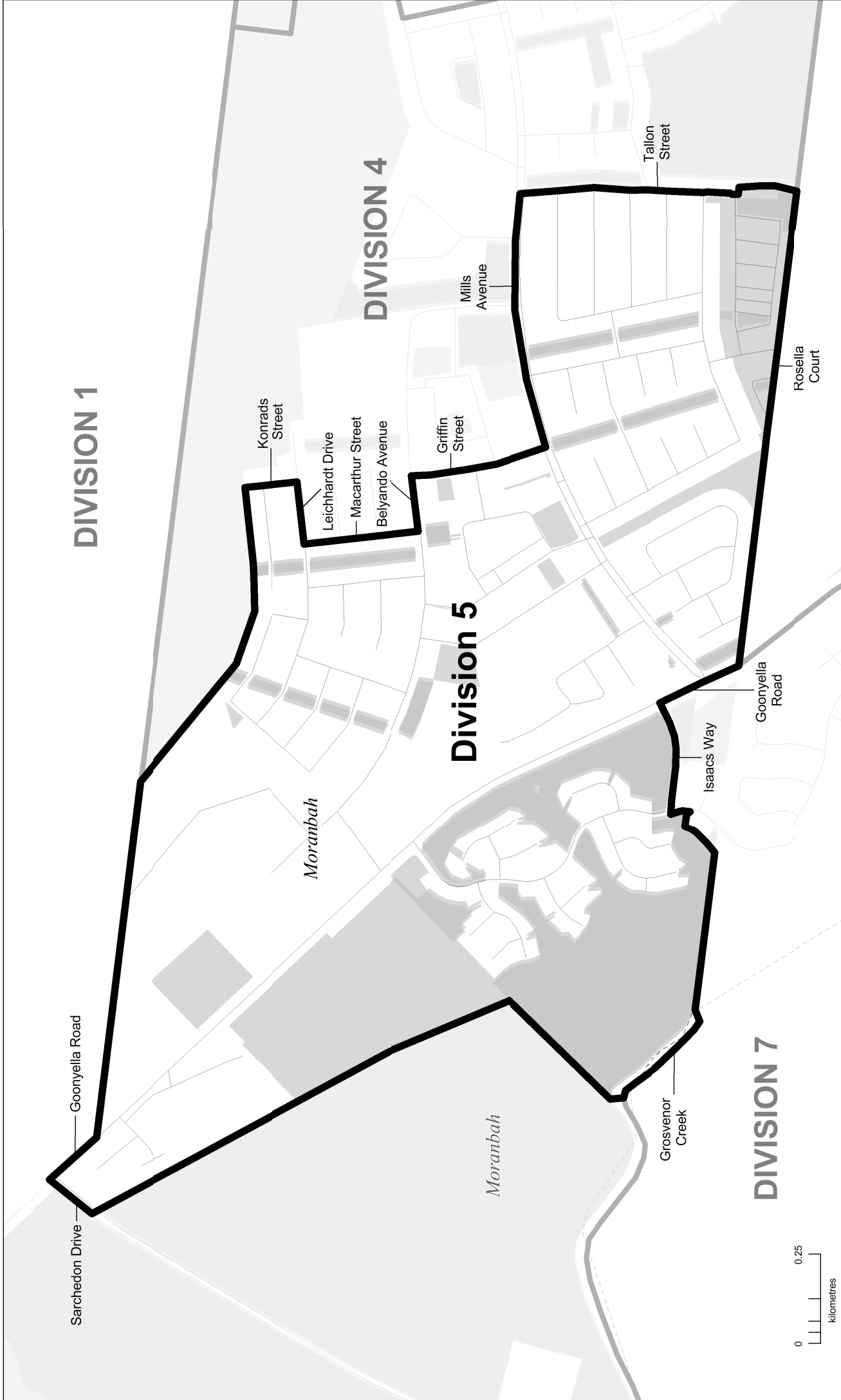
# DIVISION 3



DIVISION 4

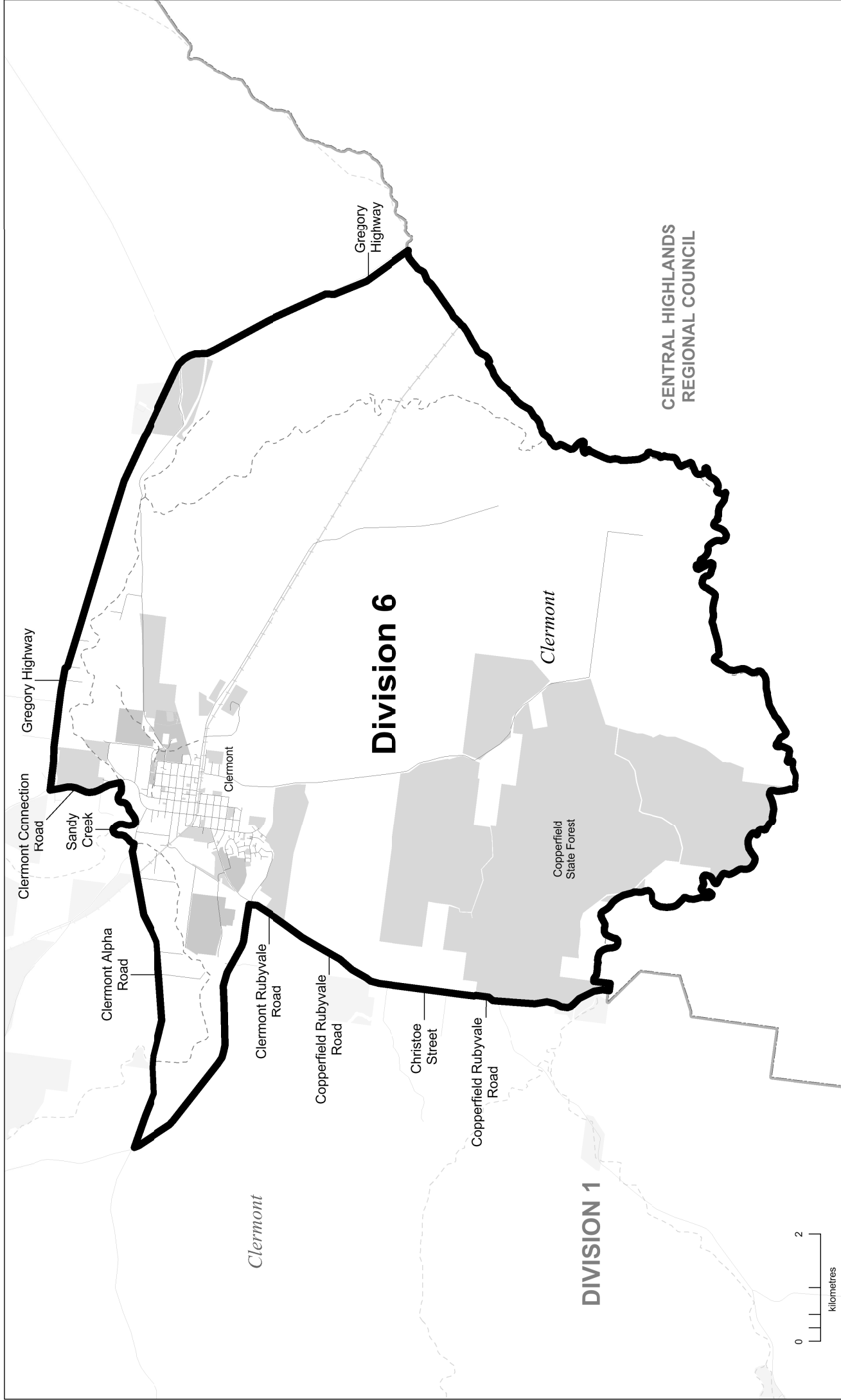


# DIVISION 5



# 2015 DIVISIONAL BOUNDARIES

## DIVISION 6



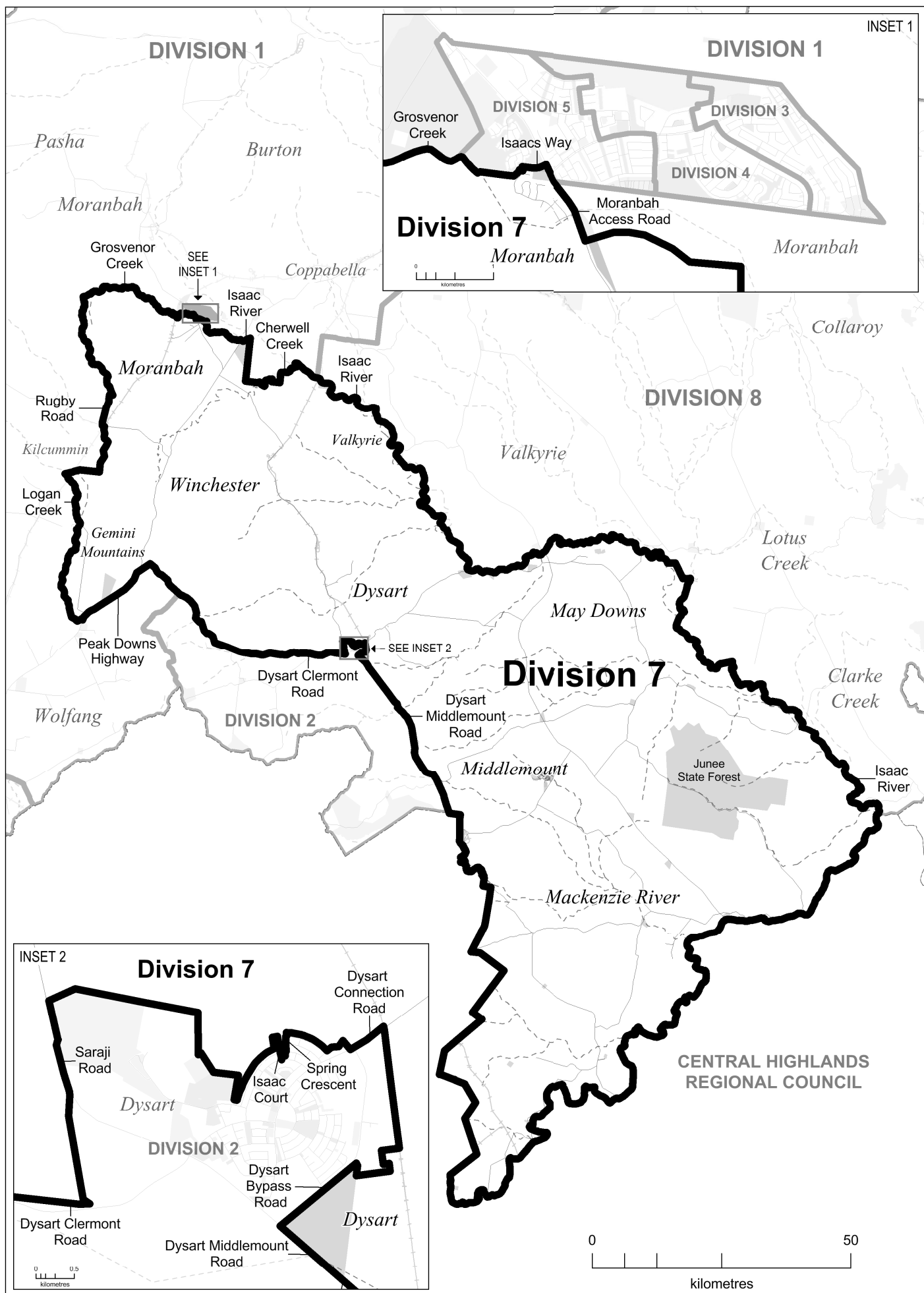
Watercourse  
Waterbody

Road  
Railway

Division Boundary  
Adjacent Division Boundary

Park / Reserve

# DIVISION 7



# DIVISION 8

